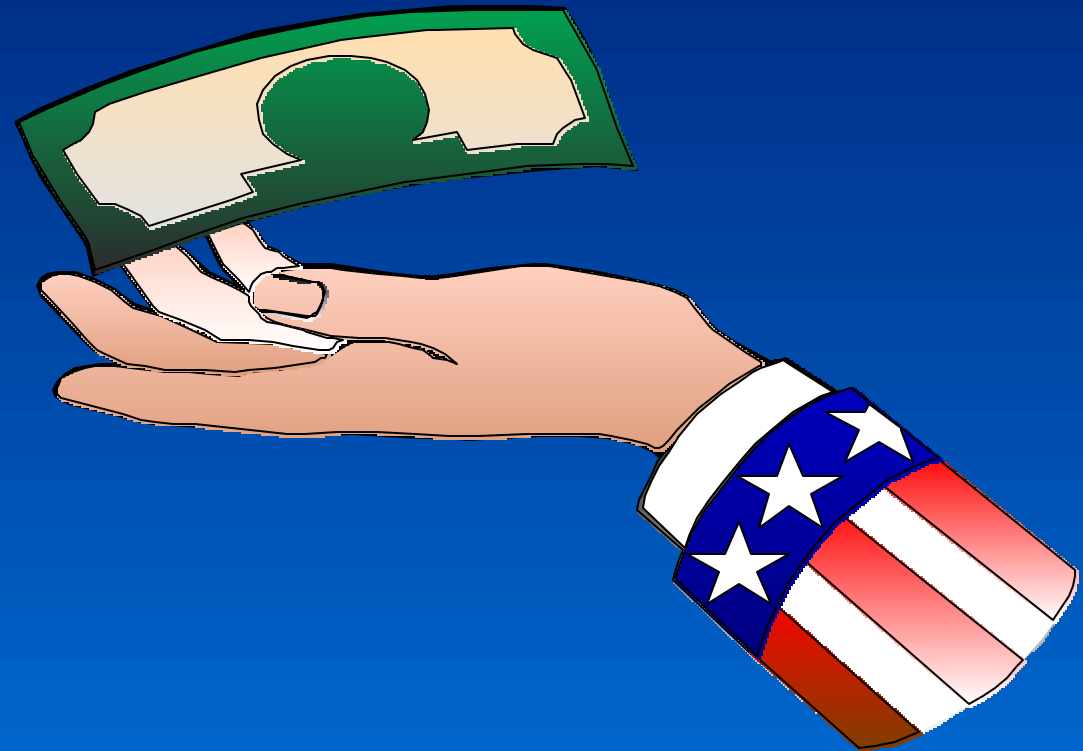


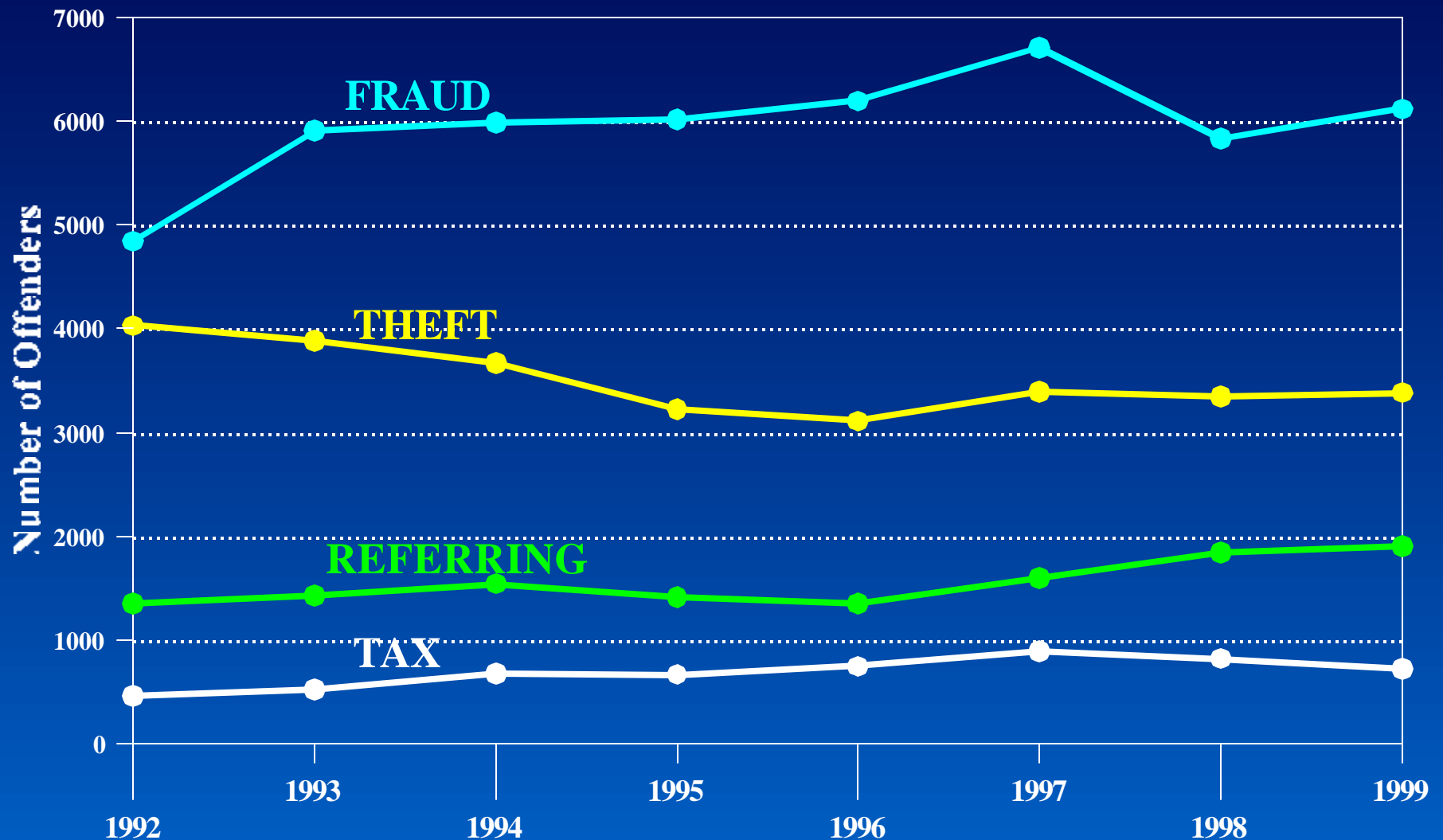
# Economic Crime Package

---

Overview of Current  
Guideline Application,  
Sentencing Trends,  
and  
Loss Tables



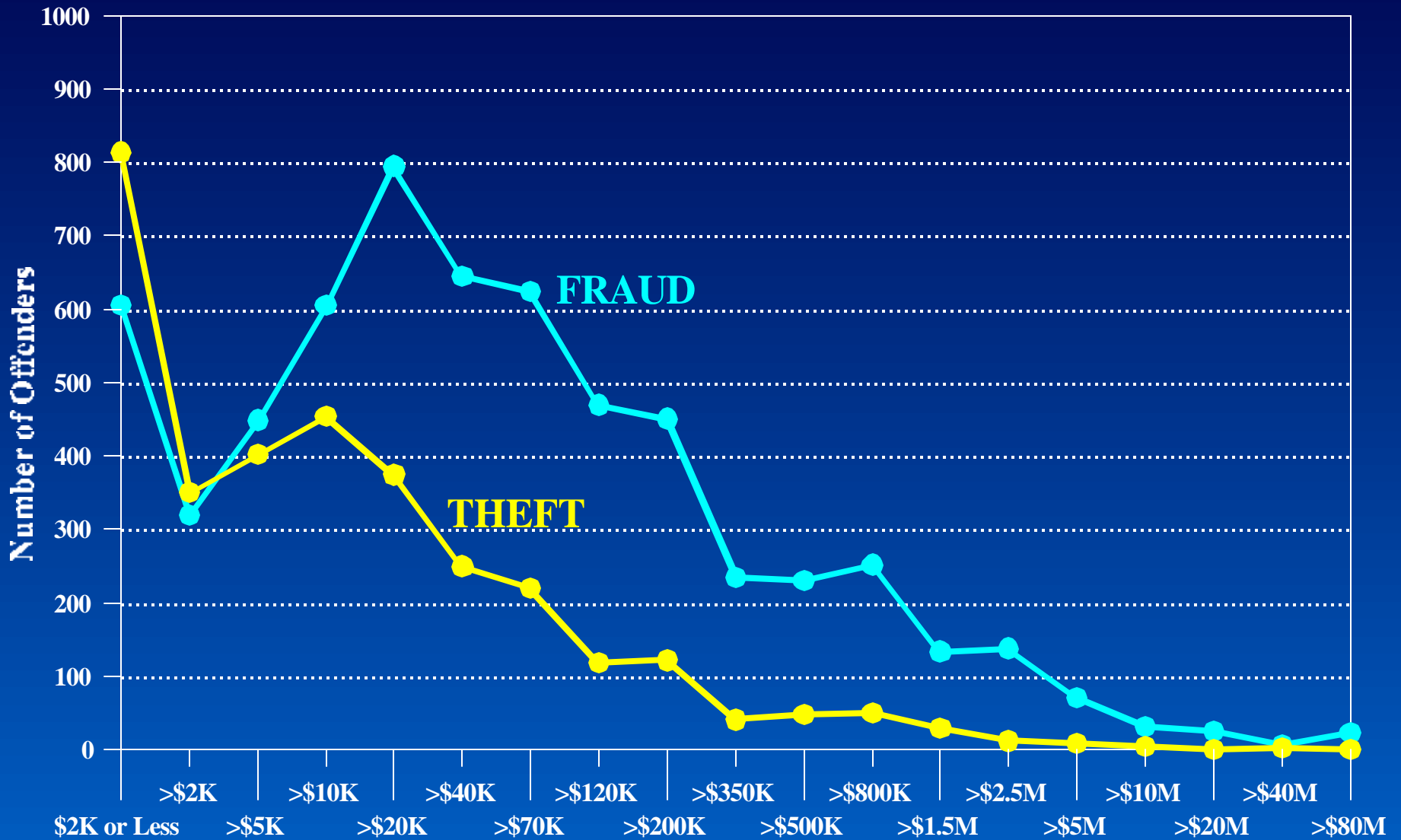
# Number of Theft, Fraud, Tax, and Referring Offenders FY1992-FY1999



SOURCE: U.S. Sentencing Commission 1992-1999 Datafiles: USSCFY92-USSCFY99

Theft includes the number of offenders sentenced each year with §§ 2B1.1, 2B1.2, or 2B1.3 as the primary sentencing guideline. Fraud includes the number of offenders sentenced each year with §2F1.1 as the primary sentencing guideline. Tax includes the number of offenders sentenced each year with §§ 2T1.1, 2T1.2, 2T1.3, 2T1.4, 2T1.6, 2T1.7, 2T1.9, 2T2.1, 2T3.1, or 2T3.2 as the primary sentencing guideline. Referring includes the number of offenders sentenced each year with §§2B2.3, 2B3.3, 2B4.1, 2B5.1, 2B5.3, 2B6.1, 2C1.1, 2C1.2, 2C1.6, 2C1.7, 2E5.1, 2F1.2, 2G2.2, 2G3.1, 2G3.2, 2K1.4, 2Q2.1, or 2S1.3 as the primary sentencing guideline.

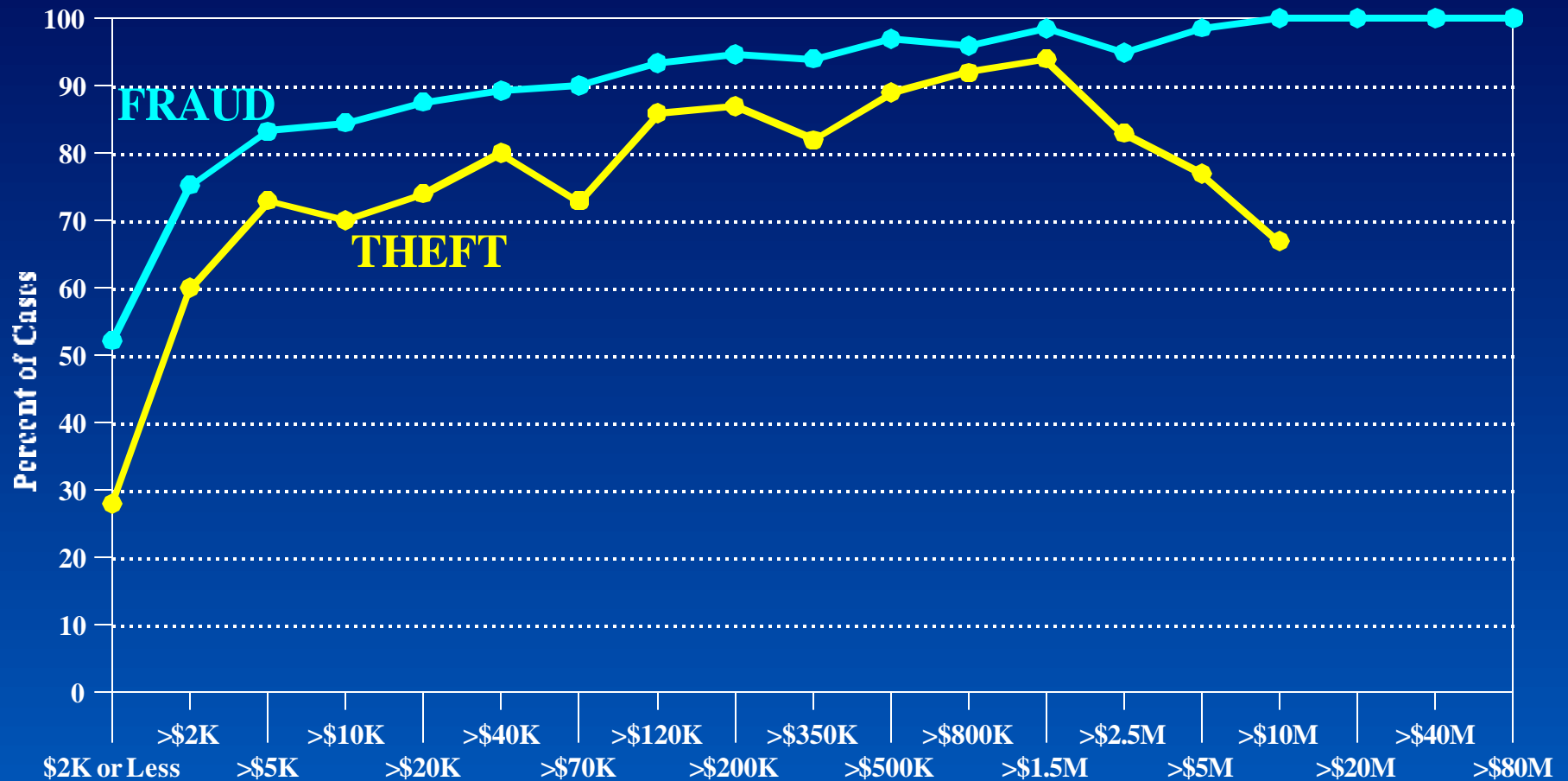
# Number of Offenders in Each Loss Amount Category



SOURCE: U.S. Sentencing Commission 1999 Datafile: USSCFY99

Theft includes the number of cases sentenced with § 2B1.1 as the primary sentencing guideline. Fraud includes the number of cases sentenced with § 2F1.1 as the primary sentencing guideline. Referring includes the number of cases sentenced with §§ 2B2.3, 2B3.3, 2B4.1, 2B5.1, 2B5.3, 2B6.1, 2C1.1, 2C1.2, 2C1.6, 2C1.7, 2E5.1, 2F1.2, 2G2.2, 2G3.1, 2G3.2, 2K1.4, 2Q2.1, or 2S1.3 as the primary sentencing guideline.

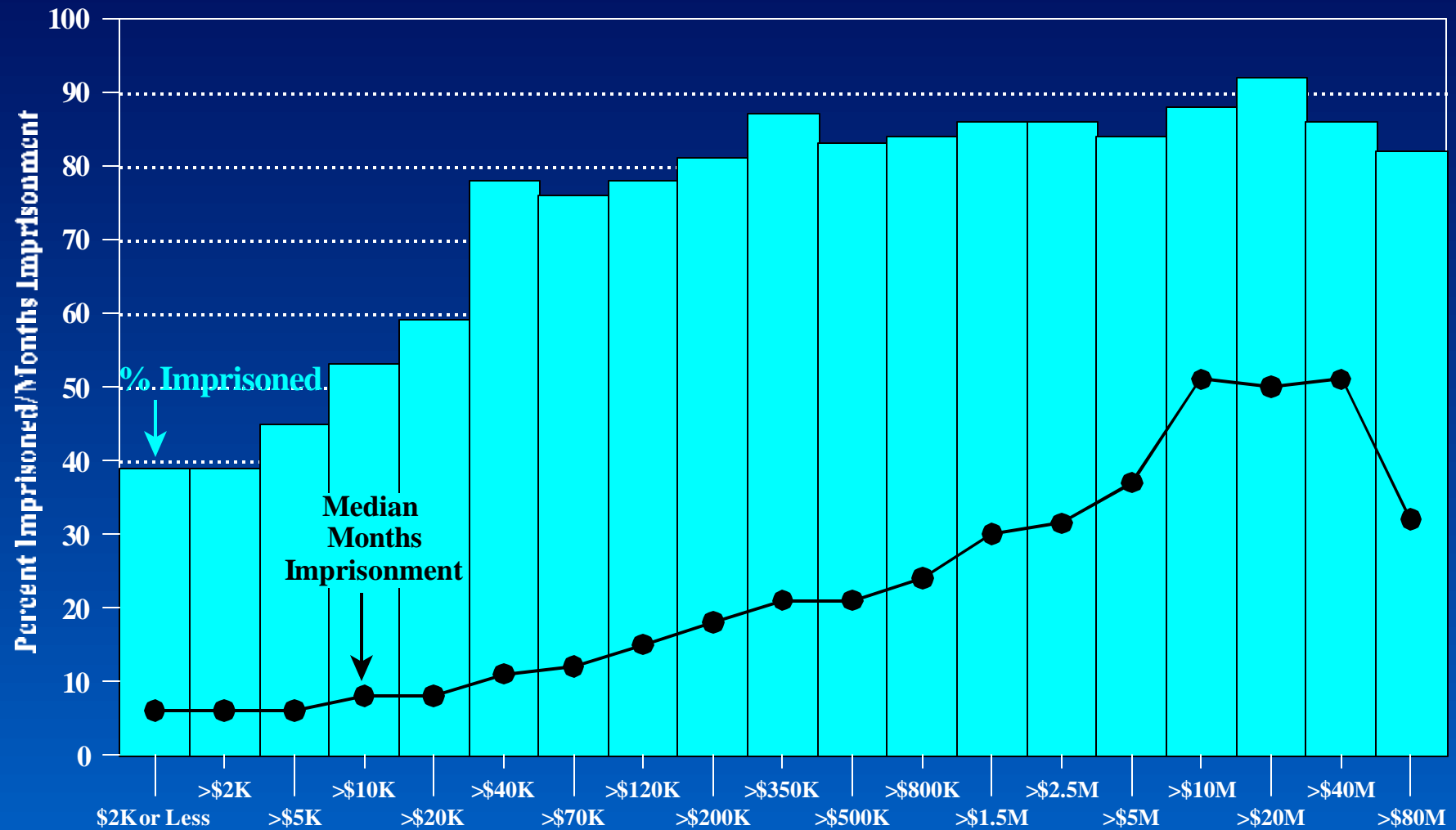
# More Than Minimal Planning Enhancement Application Rates for Fraud and Theft Offenders in Each Loss Amount Category



SOURCE: U.S. Sentencing Commission 1999 Datafile: USSCFY99

Chart includes all cases with §2F1.1 or §2B1.1 as the primary sentencing guideline, and the proportion of cases receiving the more than minimal planning enhancement. For offenders sentenced under §2B1.1, either the more than minimal planning or fencing prong may apply. Due to small numbers, theft offenders in the > \$10 million category or higher have been combined into a single category.

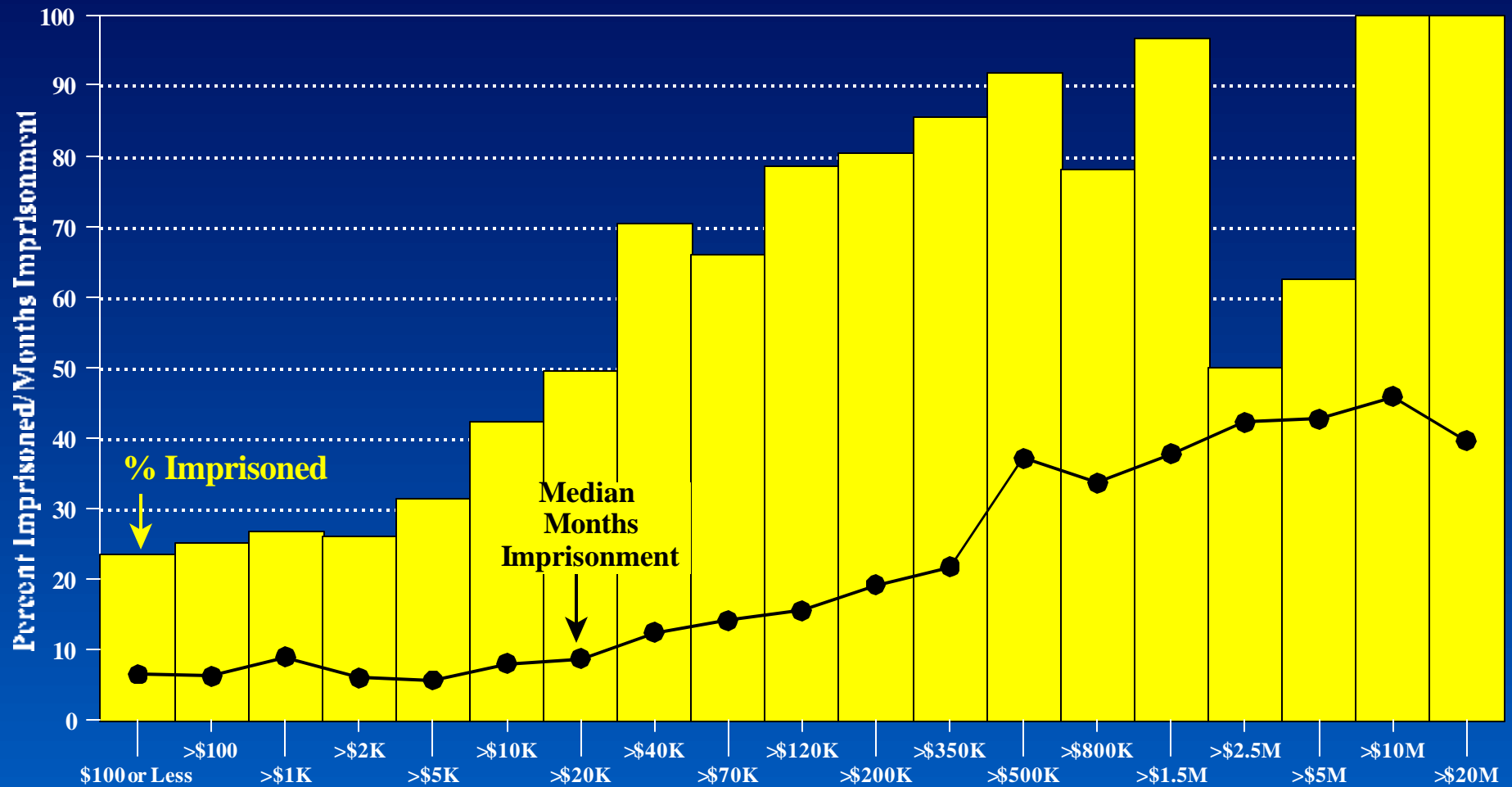
# Imprisonment Rates and Lengths for Fraud Offenders in Each Loss Amount Category



SOURCE: U.S. Sentencing Commission 1999 Datafile: USSCFY99

Chart includes all offenders with §2F1.1 as the primary sentencing guideline. For the bars, the y-axis represents the percent of offenders receiving prison sentences. For the line, the y-axis represents the median months imprisonment for those offenders sentenced to prison.

# Imprisonment Rates and Lengths for Theft Offenders in Each Loss Amount Category



SOURCE: U.S. Sentencing Commission 1999 Datafile: USSCFY99

Chart includes all offenders with §2B1.1 as the primary sentencing guideline. For the bars, the y-axis represents the percent of offenders receiving prison sentences. For the line, the y-axis represents the median months imprisonment for those offenders sentenced to prison.

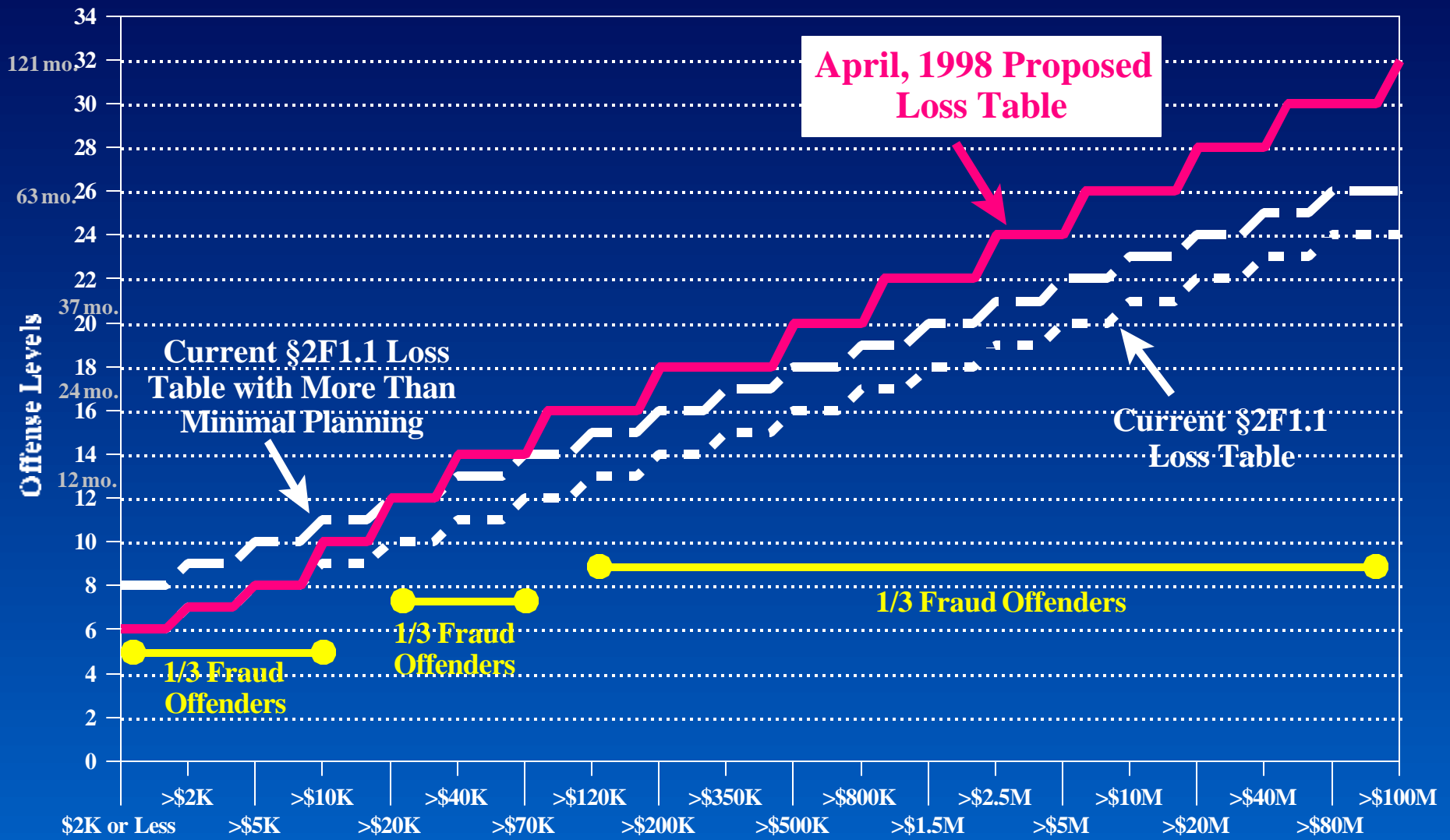
# Economic Crime Package

---

## Loss Table



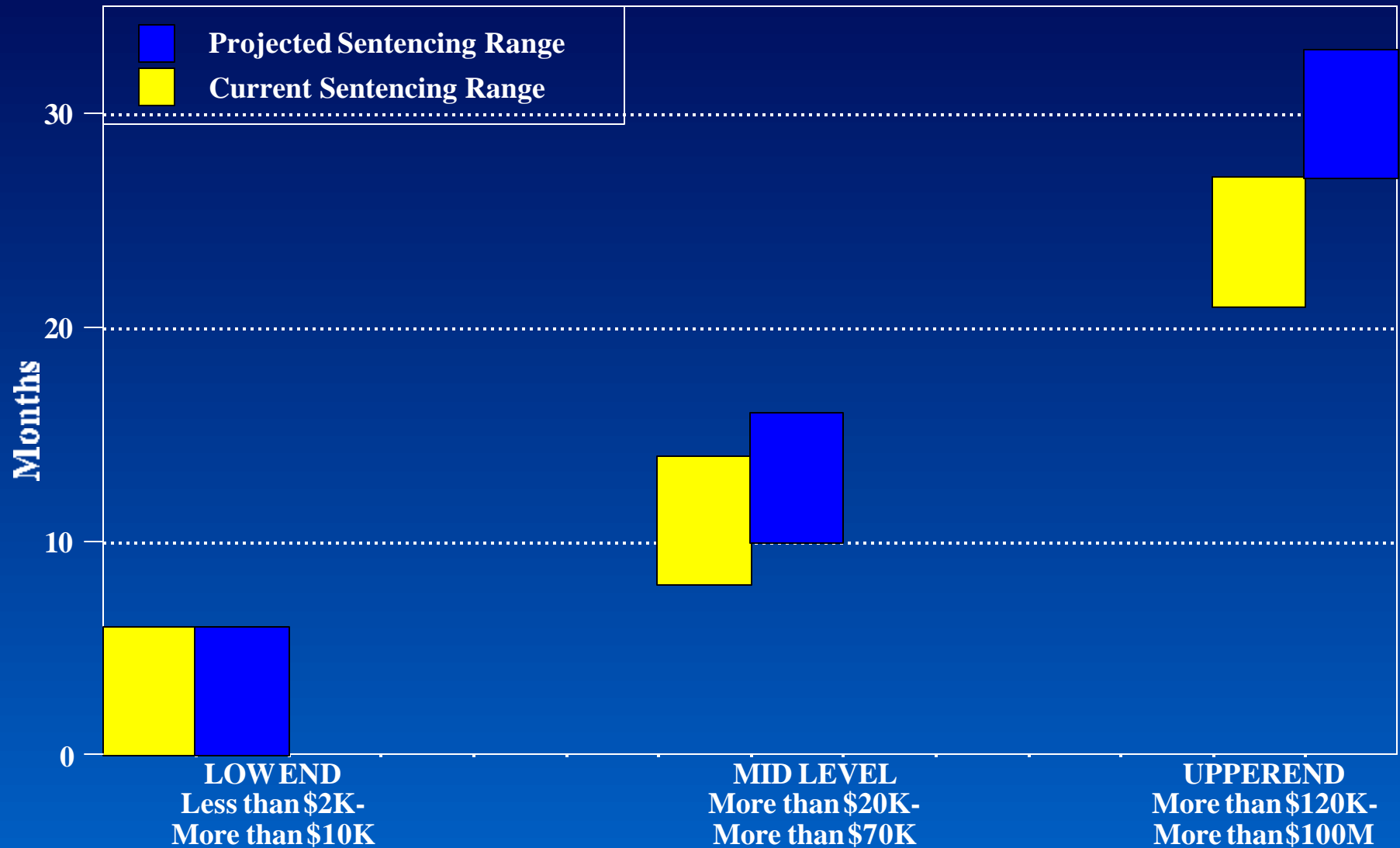
# Comparison of Current and Proposed Fraud Loss Tables



SOURCE: U.S. Sentencing Commission  
 Offense levels include base offense level of six and the applicable loss table enhancement. The x-axis displays sentence lengths associated with selected offense levels for offenders in criminal history category I.



# Current and Projected Sentence Ranges for Offenders in Three Loss Table Categories



SOURCE: U.S. Sentencing Commission

Current sentencing ranges are based on current average final offense levels for fraud and theft offenders in criminal history category I on the Sentencing Table. Projected sentencing ranges are based on projected average offense levels calculated using the proposed (April, 1998) loss table adjustments and elimination of more than minimal planning.



[WWW.USSC.GOV](http://www.usssc.gov)