

United States Sentencing Commission Quarterly Data Report



**3rd Quarter Release
Preliminary Fiscal Year 2025 Data
Through June 30, 2025**

Introduction

As part of its ongoing mission, the United States Sentencing Commission provides Congress, the judiciary, the executive branch, and the general public with data extracted and analyzed from sentencing documents submitted to the Commission by the courts.¹ Data is reported on an annual basis in the Commission's *Annual Report* and *Sourcebook of Federal Sentencing Statistics*.² Additional information on Commission data can be found through the Commission's "Interactive Data Analyzer" at <https://ida.ussc.gov>.

After the Supreme Court's decision in *United States v. Booker* on January 12, 2005, the Commission began reporting data on a quarterly basis in order to provide real-time data concerning the sentences imposed in the federal courts. The types of data reported increased over time to accommodate various requests for additional information. These reports were eventually standardized in a format that was largely unchanged through fiscal year 2015. In fiscal year 2016, the Commission revised the format for its *Quarterly Data Reports*, to include information not previously reported on a quarterly basis, and to make it easier to understand the data that was presented.

Beginning in 2018, the Commission again updated the way it presents quarterly data. Now, all analyses that involve a comparison of the sentence imposed relative to the guideline range that applied in the case are presented in a new way. Sentences are now grouped into two broad categories: Sentences Under the Guidelines Manual and Variances. The former category comprises all cases in which the sentence imposed was within the applicable guideline range or, if outside the range, where the court indicated that one or more of the departure reasons in the Commission's *Guidelines Manual* was a basis for the sentence. Variance cases are those where the sentence was outside the guideline range (either above or below) and where the court did not cite any guideline reason for the sentence. Data for important subgroups within these two categories are also reported.

This report reflects other methodological changes that began with fiscal year 2018 data. Principal among them is the way cases are assigned to a "type of crime" (previously called offense type). Beginning with fiscal year 2018, the guideline (or guidelines) that the court applied in determining the sentence largely determines the crime type category to which a case is assigned. Previously, the maximum penalty provided under the statute of conviction was used for this categorization. Also, the names of some of the crime type categories have been revised and some outdated categories have been removed from the tables and figures.

Additionally, cases involving the production of child pornography have been assigned to the sexual abuse crime type. Previously, these cases were assigned to the child pornography offense type in the *Sourcebook*. This change reflects the way in which the production of child

¹ In each federal felony or Class A misdemeanor case, sentencing courts are required to submit the following documents to the Commission: the Judgment and Commitment Order, the Statement of Reasons, the plea agreement (if applicable), the indictment or other charging document, and the presentence report. See 28 U.S.C. § 994(w).

² Electronic copies of the *Annual Report* and *Sourcebook of Federal Sentencing Statistics* for fiscal years 1995 through 2024 are available at the Commission's website, www.ussc.gov.

pornography is treated under the sentencing guidelines.

Another important methodological change is that sentences are capped at 470 months for all analyses. This is consistent with the Commission's long-standing practice of assigning a value of 470 months to any life imprisonment sentence.

Because of these methodological changes, direct comparisons between data for fiscal year 2018 and later years cannot always be made to data reported in the *Quarterly Data Reports* released before the Final Fiscal Year 2018 *Quarterly Data Report*.

The data in this report is preliminary and subject to change as the Commission collects, analyzes, and reports on data from additional cases throughout the fiscal year. When data for each new quarter is made available, the Commission will update the previous preliminary quarterly totals in the most recent release until the release of the final fiscal year data in the Commission's *Sourcebook*.³

³ Data for previous quarters may change for many reasons. For example, the courts have up to 30 days after the entry of judgment in a case to submit court documents to the Commission. The Commission both extracts information from the documents and screens cases through the quality control procedures and does not include any case in a data release unless it has been fully entered and reviewed.

CONTENTS

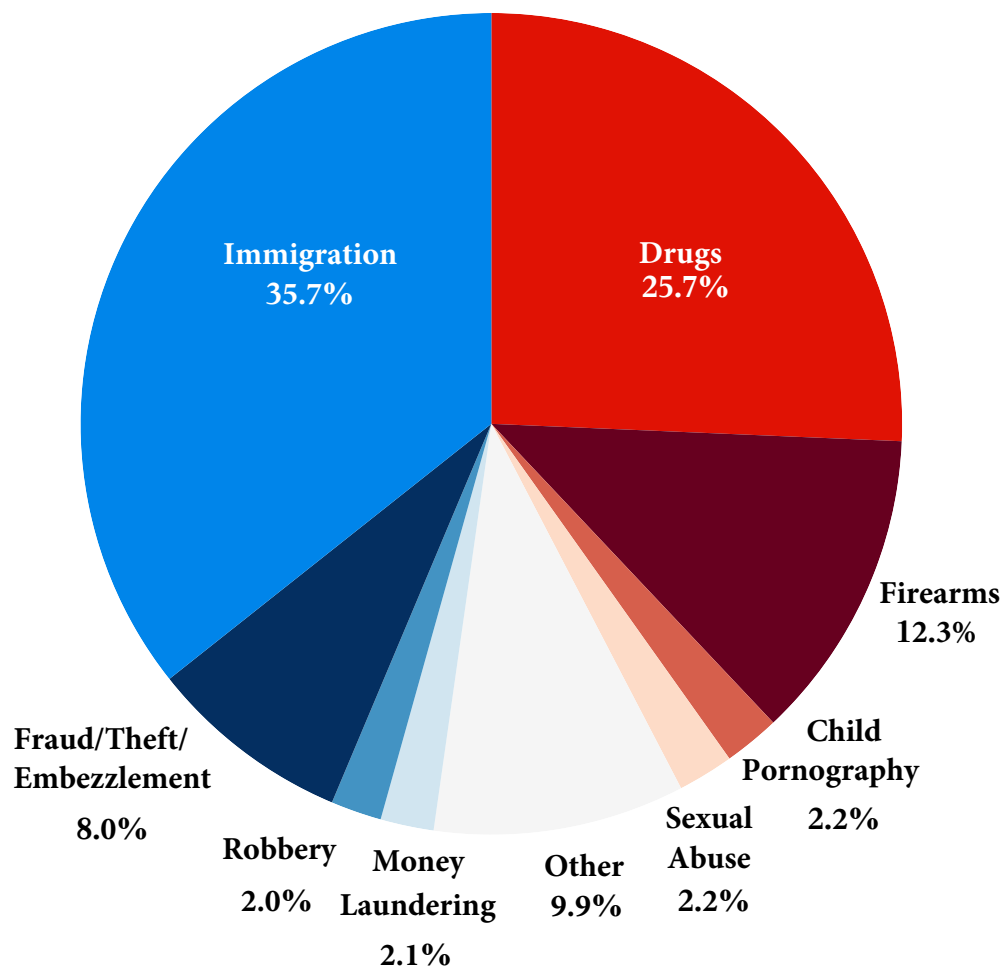
Figure 1: Sentenced Individuals by Type of Crime	1
Table 1: Sentenced Individuals by Type of Crime	2
Table 2: Sentenced Individuals in Each Circuit and District.....	3
Figure 2: Number of Sentenced Individuals by Selected Primary Guidelines	5
Table 3: Race of Sentenced Individuals by Type of Crime	6
Table 4: Gender of Sentenced Individuals by Type of Crime	7
Table 5: Citizenship of Sentenced Individuals by Type of Crime.....	8
Table 6: Sentence Length by Type of Crime	9
Table 7: Sentence Type by Type of Crime	10
Table 8: Sentence Imposed Relative to the Guideline Range.....	11
Figure 3: Sentences Under the Guidelines Manual and Variances Quarterly Data	12
Figure 4: Sentence Imposed Relative to the Guideline Range Quarterly Data.....	13
Table 9: Sentence Imposed Relative to the Guideline Range In Each Circuit and District.....	14
Table 10: Sentence Imposed Relative to the Guideline Range by Type of Crime	17
Table 11: Sentence Imposed Relative to the Guideline Range by Primary Sentencing Guideline	18
Table 12: Attribution Category for Sentences Outside of the Guideline Range.....	20
Table 13: Extent of Upward Departures by Type of Crime.....	22
Table 14: Extent of Upward Variances by Type of Crime	23
Table 15: Extent of §5K1.1 Substantial Assistance Departures by Type of Crime.....	24
Table 16: Extent of §5K3.1 Early Disposition Program Departures by Type of Crime.....	25
Table 17: Extent of Other Downward Departures by Type of Crime.....	26

Table 18: Extent of Downward Variances by Type of Crime	27
Figure 5: Sentence Length and Guideline Minimum Quarterly Data for Sentenced Individuals.....	28
Figure 6: Sentence Length and Guideline Minimum Quarterly Data for Individuals Sentenced Under §2B1.1	29
Figure 7: Sentence Length and Guideline Minimum Quarterly Data for Individuals Sentenced Under §2K2.1	30
Figure 8: Sentence Length and Guideline Minimum Quarterly Data for Individuals Sentenced Under §2L1.1	31
Figure 9: Sentence Length and Guideline Minimum Quarterly Data for Individuals Sentenced Under §2L1.2	32
Figure 10: Sentence Length and Guideline Minimum Quarterly Data for Individuals Sentenced Under §2D1.1	33
Figure 11: Distribution of Primary Drug Type in Federal Drug Cases	34
Figure 12: Sentence Length In Drug Trafficking Cases by Major Drug Type Quarterly Data	35
 <i>Appendix</i>	
Appendix A: Descriptions of Datafiles and Variables.....	A-1

Figure 1

SENTENCED INDIVIDUALS BY TYPE OF CRIME¹

**3rd Quarter 2025 Preliminary Cumulative Data
(October 1, 2024, through June 30, 2025)**



¹ This figure includes the 47,894 cases reported to the Commission. The Drugs category includes trafficking and simple possession. Descriptions of variables used in this figure are provided in Appendix A.

SOURCE: U.S. Sentencing Commission, Preliminary 2025 Datafile, USSCFY25 (October 1, 2024, through June 30, 2025).

Table 1

SENTENCED INDIVIDUALS BY TYPE OF CRIME¹
3rd Quarter 2025 Preliminary Cumulative Data (October 1, 2024, through June 30, 2025)

TYPE OF CRIME	N	%
TOTAL	47,894	100.0
Administration of Justice	418	0.9
Antitrust	15	0.0
Arson	60	0.1
Assault	632	1.3
Bribery/Corruption	249	0.5
Burglary/Trespass	35	0.1
Child Pornography	1,035	2.2
Commercialized Vice	72	0.2
Drug Possession	63	0.1
Drug Trafficking	12,258	25.6
Environmental	114	0.2
Extortion/Racketeering	49	0.1
Firearms	5,898	12.3
Food and Drug	29	0.1
Forgery/Counter/Copyright	60	0.1
Fraud/Theft/Embezzlement	3,810	8.0
Immigration	17,101	35.7
Individual Rights	60	0.1
Kidnapping	117	0.2
Manslaughter	73	0.2
Money Laundering	1,001	2.1
Murder	324	0.7
National Defense	793	1.7
Obscenity/Other Sex Offenses	244	0.5
Prison Offenses	298	0.6
Robbery	943	2.0
Sexual Abuse	1,038	2.2
Stalking/Harassing	206	0.4
Tax	309	0.6
Other	590	1.2

¹ Descriptions of variables used in this table are provided in Appendix A.

SOURCE: U.S. Sentencing Commission, Preliminary 2025 Datafile, USSCFY25 (October 1, 2024, through June 30, 2025).

Table 2

SENTENCED INDIVIDUALS IN EACH CIRCUIT AND DISTRICT¹

3rd Quarter 2025 Preliminary Cumulative Data
(October 1, 2024, through June 30, 2025)

CIRCUIT			CIRCUIT		
District	N	%	District	N	%
TOTAL	47,894	100.0			
D.C. CIRCUIT	334	0.7	FIFTH CIRCUIT	15,268	31.9
District of Columbia	334	0.7	Louisiana		
			Eastern	233	0.5
			Middle	70	0.1
			Western	256	0.5
FIRST CIRCUIT	1,392	2.9	Mississippi		
Maine	108	0.2	Northern	141	0.3
Massachusetts	404	0.8	Southern	265	0.6
New Hampshire	104	0.2	Texas		
Puerto Rico	695	1.5	Eastern	745	1.6
Rhode Island	81	0.2	Northern	949	2.0
			Southern	5,254	11.0
SECOND CIRCUIT	2,146	4.5	Western	7,355	15.4
Connecticut	200	0.4			
New York			SIXTH CIRCUIT	3,113	6.5
Eastern	461	1.0	Kentucky		
Northern	298	0.6	Eastern	272	0.6
Southern	711	1.5	Western	299	0.6
Western	317	0.7	Michigan		
Vermont	159	0.3	Eastern	572	1.2
			Western	186	0.4
THIRD CIRCUIT	1,702	3.6	Ohio		
Delaware	107	0.2	Northern	485	1.0
New Jersey	571	1.2	Southern	398	0.8
Pennsylvania			Tennessee		
Eastern	361	0.8	Eastern	385	0.8
Middle	288	0.6	Middle	253	0.5
Western	332	0.7	Western	263	0.5
Virgin Islands	43	0.1			
			SEVENTH CIRCUIT	1,537	3.2
FOURTH CIRCUIT	3,110	6.5	Illinois		
Maryland	322	0.7	Central	165	0.3
North Carolina			Northern	436	0.9
Eastern	603	1.3	Southern	166	0.3
Middle	228	0.5	Indiana		
Western	245	0.5	Northern	192	0.4
South Carolina	432	0.9	Southern	247	0.5
Virginia			Wisconsin		
Eastern	662	1.4	Eastern	241	0.5
Western	193	0.4	Western	90	0.2
West Virginia					
Northern	267	0.6			
Southern	158	0.3			

Table 2 (cont.)

CIRCUIT			CIRCUIT		
District	N	%	District	N	%
EIGHTH CIRCUIT	3,366	7.0	TENTH CIRCUIT	3,993	8.3
Arkansas			Colorado	267	0.6
Eastern	397	0.8	Kansas	262	0.5
Western	130	0.3	New Mexico	1,689	3.5
Iowa			Oklahoma		
Northern	217	0.5	Eastern	207	0.4
Southern	246	0.5	Northern	418	0.9
Minnesota	286	0.6	Western	435	0.9
Missouri			Utah	571	1.2
Eastern	697	1.5	Wyoming	144	0.3
Western	476	1.0			
Nebraska	329	0.7	ELEVENTH CIRCUIT	3,945	8.2
North Dakota	237	0.5	Alabama		
South Dakota	351	0.7	Middle	189	0.4
			Northern	383	0.8
NINTH CIRCUIT	7,988	16.7	Southern	227	0.5
Alaska	105	0.2	Florida		
Arizona	2,993	6.2	Middle	1,069	2.2
California			Northern	207	0.4
Central	633	1.3	Southern	1,043	2.2
Eastern	353	0.7	Georgia		
Northern	280	0.6	Middle	306	0.6
Southern	1,962	4.1	Northern	330	0.7
Guam	21	0.0	Southern	191	0.4
Hawaii	97	0.2			
Idaho	237	0.5			
Montana	302	0.6			
Nevada	157	0.3			
Northern Mariana Islands	9	0.0			
Oregon	360	0.8			
Washington					
Eastern	243	0.5			
Western	236	0.5			

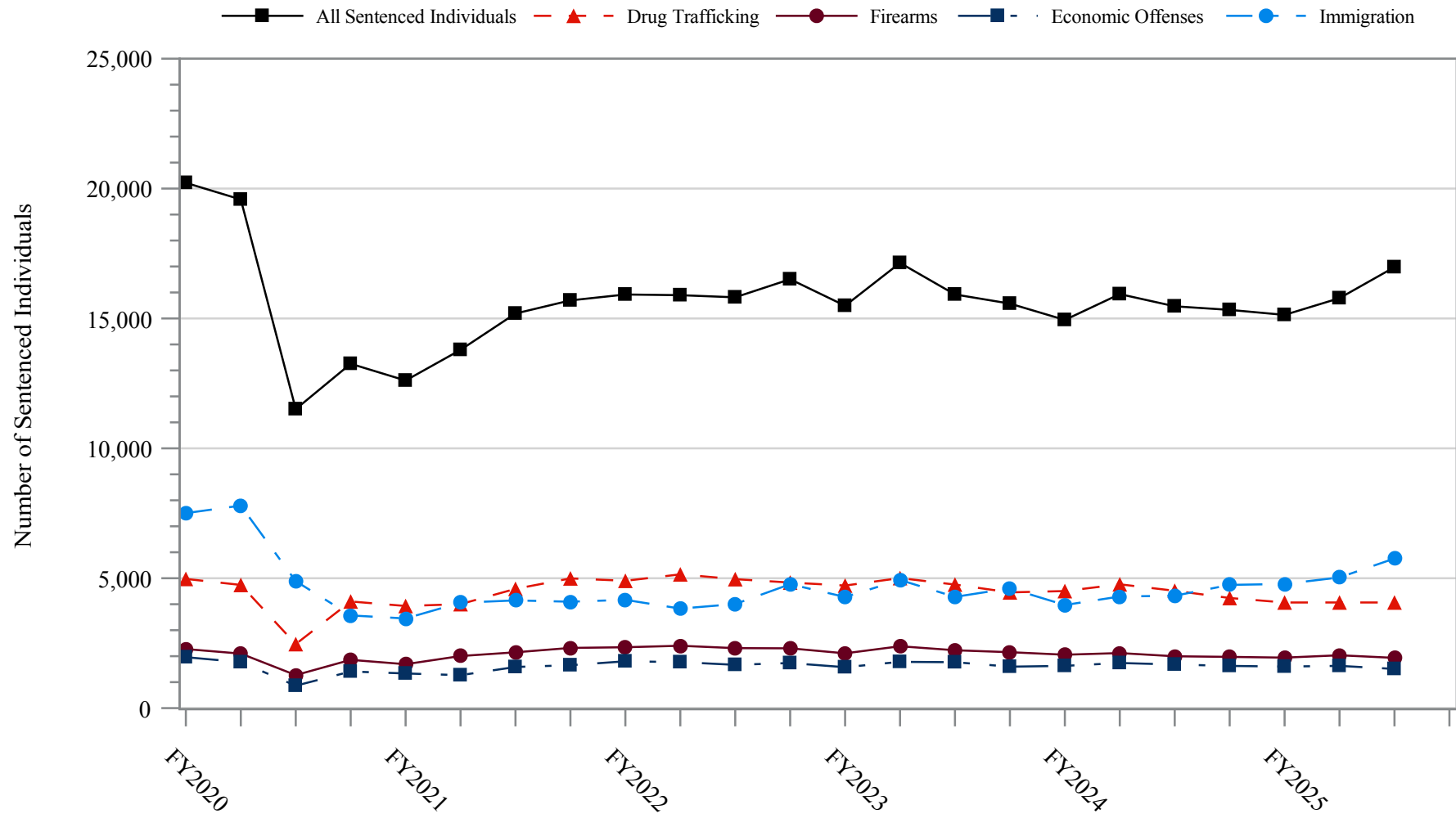
¹ Descriptions of variables used in this table are provided in Appendix A.

SOURCE: U.S. Sentencing Commission, Preliminary 2025 Datafile, USSCFY25 (October 1, 2024, through June 30, 2025).

Figure 2

NUMBER OF SENTENCED INDIVIDUALS BY SELECTED PRIMARY GUIDELINES¹

Fiscal Years 2020 - 2024,
3rd Quarter 2025 Preliminary Cumulative Data (October 1, 2024, through June 30, 2025)



¹ The *Drug Trafficking* category includes individuals sentenced under §§2D1.1, 2D1.2, 2D1.5, 2D1.6, 2D1.8, 2D1.10, or 2D1.14. The *Firearms* category includes individuals sentenced under §§2K1.3, 2K1.4, 2K2.1, 2K2.4, or 2K2.5. The *Economic Offenses* category includes individuals sentenced under §§2B1.1, 2B1.4, 2B1.5, 2B2.1, 2B3.1, 2B3.2, 2B4.1, 2B5.1, or 2B5.3. The *Immigration* category includes individuals sentenced under §§2L1.1, 2L1.2, 2L2.1, or 2L2.2. Descriptions of variables used in this figure are provided in Appendix A.

SOURCE: U.S. Sentencing Commission, 2020 - 2024 Datafiles, USSCFY20 - USSCFY24, and Preliminary Data from USSCFY25 (October 1, 2024, through June 30, 2025).

Table 3

RACE OF SENTENCED INDIVIDUALS BY TYPE OF CRIME¹
3rd Quarter 2025 Preliminary Cumulative Data (October 1, 2024, through June 30, 2025)

TYPE OF CRIME	TOTAL	WHITE		BLACK		HISPANIC		OTHER	
		N	%	N	%	N	%	N	%
TOTAL	47,149	8,898	18.9	10,948	23.2	25,334	53.7	1,969	4.2
Administration of Justice	417	142	34.1	82	19.7	155	37.2	38	9.1
Antitrust	15	14	93.3	0	0.0	1	6.7	0	0.0
Arson	60	21	35.0	15	25.0	13	21.7	11	18.3
Assault	628	123	19.6	168	26.8	115	18.3	222	35.4
Bribery/Corruption	248	80	32.3	73	29.4	71	28.6	24	9.7
Burglary/Trespass	35	11	31.4	10	28.6	4	11.4	10	28.6
Child Pornography	1,035	780	75.4	57	5.5	150	14.5	48	4.6
Commercialized Vice	72	16	22.2	31	43.1	15	20.8	10	13.9
Drug Possession	56	21	37.5	10	17.9	18	32.1	7	12.5
Drug Trafficking	12,250	2,920	23.8	3,758	30.7	5,174	42.2	398	3.2
Environmental	109	61	56.0	6	5.5	33	30.3	9	8.3
Extortion/Racketeering	48	23	47.9	8	16.7	13	27.1	4	8.3
Firearms	5,890	1,180	20.0	3,385	57.5	1,129	19.2	196	3.3
Food and Drug	29	23	79.3	1	3.4	5	17.2	0	0.0
Forgery/Counter/Copyright	60	25	41.7	18	30.0	6	10.0	11	18.3
Fraud/Theft/Embezzlement	3,787	1,384	36.5	1,430	37.8	723	19.1	250	6.6
Immigration	16,904	383	2.3	291	1.7	16,114	95.3	116	0.7
Individual Rights	56	29	51.8	14	25.0	8	14.3	5	8.9
Kidnapping	117	19	16.2	45	38.5	46	39.3	7	6.0
Manslaughter	73	5	6.8	8	11.0	5	6.8	55	75.3
Money Laundering	998	230	23.0	261	26.2	398	39.9	109	10.9
Murder	324	45	13.9	107	33.0	109	33.6	63	19.4
National Defense	509	57	11.2	28	5.5	409	80.4	15	2.9
Obscenity/Other Sex Offenses	244	92	37.7	40	16.4	29	11.9	83	34.0
Prison Offenses	292	62	21.2	114	39.0	94	32.2	22	7.5
Robbery	943	100	10.6	631	66.9	181	19.2	31	3.3
Sexual Abuse	1,036	583	56.3	158	15.3	171	16.5	124	12.0
Stalking/Harassing	203	117	57.6	30	14.8	28	13.8	28	13.8
Tax	309	179	57.9	45	14.6	50	16.2	35	11.3
Other	402	173	43.0	124	30.8	67	16.7	38	9.5

¹ Of the 47,894 cases, 745 were excluded due to missing information on sentenced individual's race. Descriptions of variables used in this table are provided in Appendix A.

SOURCE: U.S. Sentencing Commission, Preliminary 2025 Datafile, USSCFY25 (October 1, 2024, through June 30, 2025).

Table 4

GENDER OF SENTENCED INDIVIDUALS BY TYPE OF CRIME¹
3rd Quarter 2025 Preliminary Cumulative Data (October 1, 2024, through June 30, 2025)

TYPE OF CRIME	TOTAL	MALE		FEMALE	
		N	%	N	%
TOTAL	47,682	41,912	87.9	5,770	12.1
Administration of Justice	418	305	73.0	113	27.0
Antitrust	15	14	93.3	1	6.7
Arson	60	48	80.0	12	20.0
Assault	632	562	88.9	70	11.1
Bribery/Corruption	249	181	72.7	68	27.3
Burglary/Trespass	35	29	82.9	6	17.1
Child Pornography	1,035	1,022	98.7	13	1.3
Commercialized Vice	72	56	77.8	16	22.2
Drug Possession	63	45	71.4	18	28.6
Drug Trafficking	12,258	10,310	84.1	1,948	15.9
Environmental	114	103	90.4	11	9.6
Extortion/Racketeering	49	43	87.8	6	12.2
Firearms	5,897	5,657	95.9	240	4.1
Food and Drug	29	18	62.1	11	37.9
Forgery/Counter/Copyright	60	48	80.0	12	20.0
Fraud/Theft/Embezzlement	3,808	2,717	71.3	1,091	28.7
Immigration	17,081	15,719	92.0	1,362	8.0
Individual Rights	60	52	86.7	8	13.3
Kidnapping	117	103	88.0	14	12.0
Manslaughter	73	65	89.0	8	11.0
Money Laundering	1,001	762	76.1	239	23.9
Murder	324	294	90.7	30	9.3
National Defense	649	551	84.9	98	15.1
Obscenity/Other Sex Offenses	244	242	99.2	2	0.8
Prison Offenses	298	266	89.3	32	10.7
Robbery	943	888	94.2	55	5.8
Sexual Abuse	1,038	964	92.9	74	7.1
Stalking/Harassing	206	197	95.6	9	4.4
Tax	309	237	76.7	72	23.3
Other	545	414	76.0	131	24.0

¹ Of the 47,894 cases, 212 were excluded due to missing information on sentenced individual's gender. Descriptions of variables used in this table are provided in Appendix A.

SOURCE: U.S. Sentencing Commission, Preliminary 2025 Datafile, USSCFY25 (October 1, 2024, through June 30, 2025).

Table 5

CITIZENSHIP OF SENTENCED INDIVIDUALS BY TYPE OF CRIME¹
3rd Quarter 2025 Preliminary Cumulative Data (October 1, 2024, through June 30, 2025)

TYPE OF CRIME	TOTAL	U.S. CITIZEN		NON-U.S. CITIZEN	
		N	%	N	%
TOTAL	47,687	28,068	58.9	19,619	41.1
Administration of Justice	417	309	74.1	108	25.9
Antitrust	15	14	93.3	1	6.7
Arson	60	56	93.3	4	6.7
Assault	624	592	94.9	32	5.1
Bribery/Corruption	249	231	92.8	18	7.2
Burglary/Trespass	35	33	94.3	2	5.7
Child Pornography	1,035	986	95.3	49	4.7
Commercialized Vice	72	63	87.5	9	12.5
Drug Possession	55	53	96.4	2	3.6
Drug Trafficking	12,241	9,912	81.0	2,329	19.0
Environmental	108	80	74.1	28	25.9
Extortion/Racketeering	48	40	83.3	8	16.7
Firearms	5,897	5,621	95.3	276	4.7
Food and Drug	28	25	89.3	3	10.7
Forgery/Counter/Copyright	60	50	83.3	10	16.7
Fraud/Theft/Embezzlement	3,792	3,267	86.2	525	13.8
Immigration	17,092	2,110	12.3	14,982	87.7
Individual Rights	59	57	96.6	2	3.4
Kidnapping	117	94	80.3	23	19.7
Manslaughter	73	73	100.0	0	0.0
Money Laundering	1,001	723	72.2	278	27.8
Murder	324	272	84.0	52	16.0
National Defense	788	135	17.1	653	82.9
Obscenity/Other Sex Offenses	244	235	96.3	9	3.7
Prison Offenses	293	278	94.9	15	5.1
Robbery	942	891	94.6	51	5.4
Sexual Abuse	1,038	988	95.2	50	4.8
Stalking/Harassing	205	193	94.1	12	5.9
Tax	308	288	93.5	20	6.5
Other	467	399	85.4	68	14.6

¹ Of the 47,894 cases, 207 were excluded due to missing information on sentenced individual's citizenship status. Descriptions of variables used in this table are provided in Appendix A.

SOURCE: U.S. Sentencing Commission, Preliminary 2025 Datafile, USSCFY25 (October 1, 2024, through June 30, 2025).

Table 6

SENTENCE LENGTH BY TYPE OF CRIME¹
3rd Quarter 2025 Preliminary Cumulative Data (October 1, 2024, through June 30, 2025)

TYPE OF CRIME	Mean Months	Median Months	N
TOTAL	49	21	47,894
Administration of Justice	14	9	418
Antitrust	9	6	15
Arson	62	60	60
Assault	73	46	632
Bribery/Corruption	19	12	249
Burglary/Trespass	19	6	35
Child Pornography	117	97	1,035
Commercialized Vice	12	12	72
Drug Possession	2	0	63
Drug Trafficking	86	70	12,258
Environmental	3	0	114
Extortion/Racketeering	42	24	49
Firearms	50	41	5,898
Food and Drug	4	0	29
Forgery/Counter/Copyright	18	12	60
Fraud/Theft/Embezzlement	23	12	3,810
Immigration	10	6	17,101
Individual Rights	43	12	60
Kidnapping	191	168	117
Manslaughter	88	72	73
Money Laundering	60	30	1,001
Murder	288	297	324
National Defense	7	0	793
Obscenity/Other Sex Offenses	21	18	244
Prison Offenses	13	12	298
Robbery	108	90	943
Sexual Abuse	230	210	1,038
Stalking/Harassing	26	21	206
Tax	17	12	309
Other	4	0	590

¹ Sentences greater than 470 months (including life) and probation were included in the sentence average computations as 470 months and zero months, respectively. In addition, the information presented in this table includes conditions of confinement as described in USSG §5C1.1. Descriptions of variables used in this table are provided in Appendix A.

SOURCE: U.S. Sentencing Commission, Preliminary 2025 Datafile, USSCFY25 (October 1, 2024, through June 30, 2025).

Table 7

SENTENCE TYPE BY TYPE OF CRIME¹

3rd Quarter 2025 Preliminary Cumulative Data (October 1, 2024, through June 30, 2025)

TYPE OF CRIME	TOTAL	TOTAL RECEIVING IMPRISONMENT		Prison Only		Prison and Alternatives ²		TOTAL RECEIVING PROBATION		Probation and Alternatives ²		Probation Only		TOTAL RECEIVING FINE ONLY	
		N	%	N	%	N	%	N	%	N	%	N	%	N	%
TOTAL	47,894	44,090	92.1	42,951	89.7	1,139	2.4	3,623	7.6	528	1.1	3,095	6.5	181	0.4
Administration of Justice	418	316	75.6	302	72.2	14	3.3	99	23.7	18	4.3	81	19.4	3	0.7
Antitrust	15	7	46.7	7	46.7	0	0.0	8	53.3	4	26.7	4	26.7	0	0.0
Arson	60	60	100.0	56	93.3	4	6.7	0	0.0	0	0.0	0	0.0	0	0.0
Assault	632	581	91.9	558	88.3	23	3.6	50	7.9	9	1.4	41	6.5	1	0.2
Bribery/Corruption	249	178	71.5	166	66.7	12	4.8	70	28.1	12	4.8	58	23.3	1	0.4
Burglary/Trespass	35	22	62.9	21	60.0	1	2.9	12	34.3	4	11.4	8	22.9	1	2.9
Child Pornography	1,035	1,029	99.4	1,015	98.1	14	1.4	6	0.6	1	0.1	5	0.5	0	0.0
Commercialized Vice	72	53	73.6	47	65.3	6	8.3	18	25.0	3	4.2	15	20.8	1	1.4
Drug Possession	63	39	61.9	39	61.9	0	0.0	19	30.2	0	0.0	19	30.2	5	7.9
Drug Trafficking	12,258	11,829	96.5	11,460	93.5	369	3.0	428	3.5	74	0.6	354	2.9	1	0.0
Environmental	114	43	37.7	41	36.0	2	1.8	65	57.0	11	9.6	54	47.4	6	5.3
Extortion/Racketeering	49	36	73.5	36	73.5	0	0.0	13	26.5	5	10.2	8	16.3	0	0.0
Firearms	5,898	5,541	93.9	5,400	91.6	141	2.4	354	6.0	68	1.2	286	4.8	3	0.1
Food and Drug	29	6	20.7	6	20.7	0	0.0	21	72.4	1	3.4	20	69.0	2	6.9
Forgery/Counter/Copyright	60	44	73.3	41	68.3	3	5.0	16	26.7	4	6.7	12	20.0	0	0.0
Fraud/Theft/Embezzlement	3,810	2,848	74.8	2,720	71.4	128	3.4	952	25.0	167	4.4	785	20.6	10	0.3
Immigration	17,101	16,253	95.0	16,001	93.6	252	1.5	848	5.0	70	0.4	778	4.5	0	0.0
Individual Rights	60	42	70.0	37	61.7	5	8.3	18	30.0	5	8.3	13	21.7	0	0.0
Kidnapping	117	117	100.0	117	100.0	0	0.0	0	0.0	0	0.0	0	0.0	0	0.0
Manslaughter	73	69	94.5	66	90.4	3	4.1	4	5.5	0	0.0	4	5.5	0	0.0
Money Laundering	1,001	884	88.3	854	85.3	30	3.0	117	11.7	21	2.1	96	9.6	0	0.0
Murder	324	323	99.7	312	96.3	11	3.4	1	0.3	0	0.0	1	0.3	0	0.0
National Defense	793	739	93.2	730	92.1	9	1.1	17	2.1	1	0.1	16	2.0	37	4.7
Obscenity/Other Sex Offenses	244	225	92.2	208	85.2	17	7.0	19	7.8	5	2.0	14	5.7	0	0.0
Prison Offenses	298	287	96.3	270	90.6	17	5.7	11	3.7	1	0.3	10	3.4	0	0.0
Robbery	943	931	98.7	905	96.0	26	2.8	12	1.3	2	0.2	10	1.1	0	0.0
Sexual Abuse	1,038	1,031	99.3	1,009	97.2	22	2.1	7	0.7	1	0.1	6	0.6	0	0.0
Stalking/Harassing	206	176	85.4	167	81.1	9	4.4	30	14.6	3	1.5	27	13.1	0	0.0
Tax	309	215	69.6	197	63.8	18	5.8	92	29.8	26	8.4	66	21.4	2	0.6
Other	590	166	28.1	163	27.6	3	0.5	316	53.6	12	2.0	304	51.5	108	18.3

¹ Descriptions of variables used in this table are provided in Appendix A.² Alternatives include all cases in which sentenced individuals received conditions of confinement as described in USSG §5C1.1.

Table 8

SENTENCE IMPOSED RELATIVE TO THE GUIDELINE RANGE¹
3rd Quarter 2025 Preliminary Cumulative Data (October 1, 2024, through June 30, 2025)

	N	%
TOTAL CASES	47,436	100.0
SENTENCES UNDER THE GUIDELINES MANUAL	32,257	68.0
Within Guideline Range	23,565	49.7
Upward Departure ²	197	0.4
Downward Departure		
§5K1.1 Substantial Assistance	4,076	8.6
§5K3.1 Early Disposition Program	3,060	6.5
Other Government Motion ³	652	1.4
Non-Government Departure ⁴	707	1.5
VARIANCES	15,179	32.0
Upward Variance ⁵	2,073	4.4
Downward Variance		
Government Motion ⁶	4,725	10.0
Non-Government Variance ⁷	8,381	17.7

¹ This table reflects the 47,894 cases sentenced on or after October 1, 2024, with court documentation cumulatively received, coded, and edited at the U.S. Sentencing Commission by Aug 29, 2025. Of these, 458 cases were excluded because information was missing from the submitted documents that prevented the comparison of the sentence and the guideline range. Descriptions of variables used in this table are provided in Appendix A.

² Cases in which the sentence imposed was above the applicable guideline range and for which the court cited a reason on Part V of the Statement of Reasons form, other than §5K1.1 or §5K3.1.

³ Cases in which the sentence imposed was below the applicable guideline range and for which the court cited a reason on Part V of the Statement of Reasons form, other than §5K1.1 or §5K3.1, and where the prosecution initiated, proposed, or stipulated to the sentence.

⁴ Cases in which the sentence imposed was below the applicable guideline range and for which the court cited a reason on Part V of the Statement of Reasons form, other than §5K1.1 or §5K3.1, and where the prosecution did not initiate, propose, or stipulate to the sentence.

⁵ Cases in which the sentence imposed was above the applicable guideline range and for which the court cited a reason on Part VI of the Statement of Reasons form.

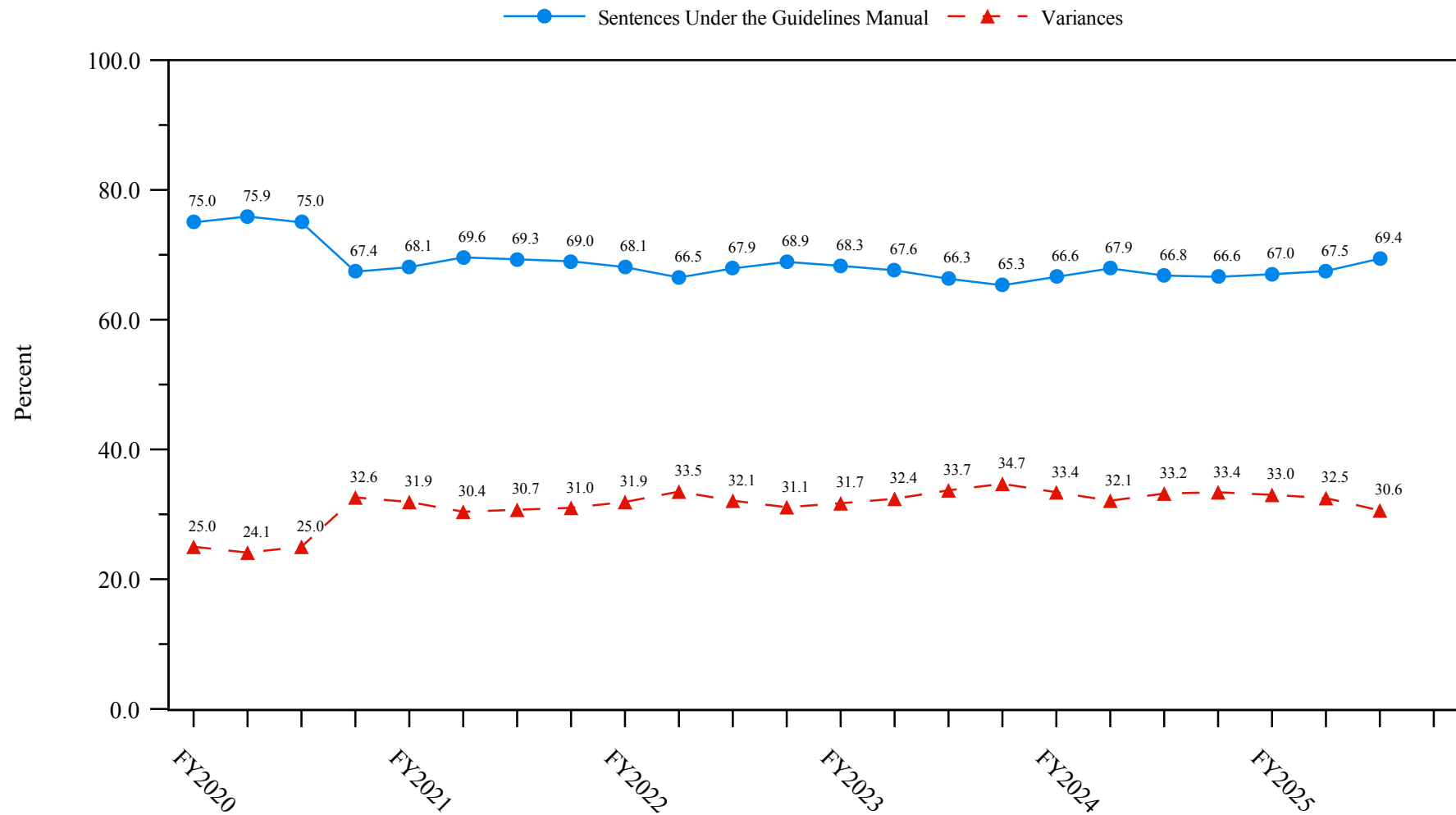
⁶ Cases in which the sentence imposed was below the applicable guideline range and for which the court cited a reason on Part VI of the Statement of Reasons form, and where the prosecution initiated, proposed, or stipulated to the sentence.

⁷ Cases in which the sentence imposed was below the applicable guideline range and for which the court cited a reason on Part VI of the Statement of Reasons form, or where no reason was given, and where the prosecution did not initiate, propose, or stipulate to the sentence.

SOURCE: U.S. Sentencing Commission, Preliminary 2025 Datafile, USSCFY25 (October 1, 2024, through June 30, 2025).

Figure 3**SENTENCES UNDER THE GUIDELINES MANUAL AND VARIANCES QUARTERLY DATA¹**

**Fiscal Years 2020 - 2024,
3rd Quarter 2025 Preliminary Cumulative Data (October 1, 2024, through June 30, 2025)**



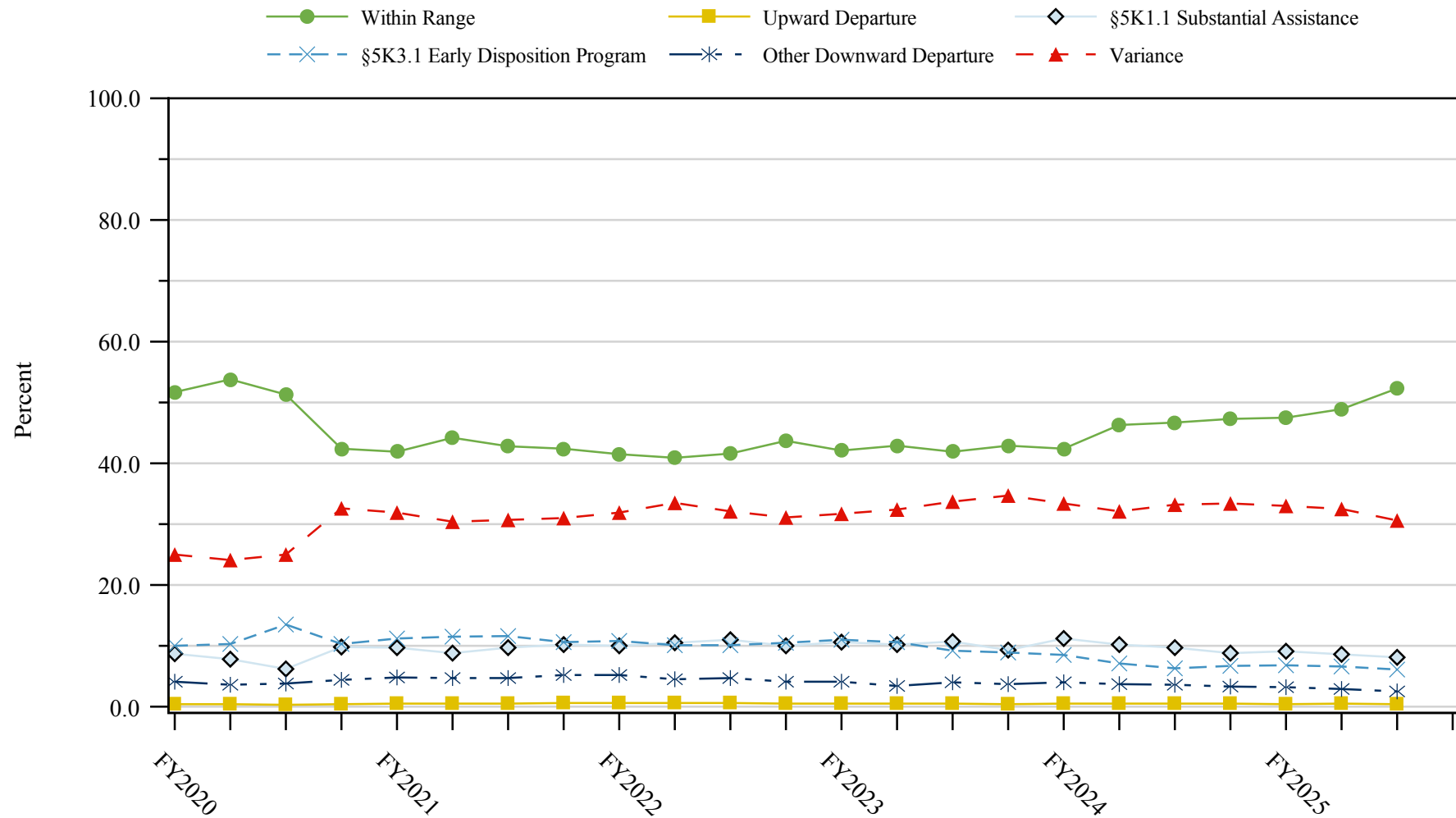
¹ Descriptions of variables used in this figure are provided in Appendix A.

SOURCE: U.S. Sentencing Commission, 2020 - 2024 Datafiles, USSCFY20 - USSCFY24, and Preliminary Data from USSCFY25 (October 1, 2024, through June 30, 2025).

Figure 4

SENTENCE IMPOSED RELATIVE TO THE GUIDELINE RANGE QUARTERLY DATA¹

Fiscal Years 2020 - 2024,
3rd Quarter 2025 Preliminary Cumulative Data (October 1, 2024, through June 30, 2025)



¹ Descriptions of variables used in this figure are provided in Appendix A.

SOURCE: U.S. Sentencing Commission, 2020 - 2024 Datafiles, USSCFY20 - USSCFY24, and Preliminary Data from USSCFY25 (October 1, 2024, through June 30, 2025).

Table 9

**SENTENCE IMPOSED RELATIVE TO THE GUIDELINE RANGE
IN EACH CIRCUIT AND DISTRICT¹**

3rd Quarter 2025 Preliminary Cumulative Data (October 1, 2024, through June 30, 2025)

CIRCUIT	TOTAL	WITHIN GUIDELINE RANGE		DEPARTURE								VARIANCE	
		N	%	UPWARD		\$5K1.1		\$5K3.1		DOWNWARD		N	%
District				N	%	N	%	N	%	N	%		
TOTAL	47,436	23,565	49.7	197	0.4	4,076	8.6	3,060	6.5	1,359	2.9	15,179	32.0
D.C. CIRCUIT	334	144	43.1	4	1.2	32	9.6	0	0.0	7	2.1	147	44.0
District of Columbia	334	144	43.1	4	1.2	32	9.6	0	0.0	7	2.1	147	44.0
FIRST CIRCUIT	1,389	519	37.4	6	0.4	137	9.9	4	0.3	52	3.7	671	48.3
Maine	108	40	37.0	0	0.0	21	19.4	0	0.0	3	2.8	44	40.7
Massachusetts	404	106	26.2	3	0.7	46	11.4	4	1.0	19	4.7	226	55.9
New Hampshire	104	17	16.3	0	0.0	17	16.3	0	0.0	5	4.8	65	62.5
Puerto Rico	693	333	48.1	3	0.4	50	7.2	0	0.0	24	3.5	283	40.8
Rhode Island	80	23	28.8	0	0.0	3	3.8	0	0.0	1	1.3	53	66.3
SECOND CIRCUIT	2,145	661	30.8	4	0.2	376	17.5	0	0.0	77	3.6	1,027	47.9
Connecticut	200	43	21.5	1	0.5	28	14.0	0	0.0	27	13.5	101	50.5
New York													
Eastern	461	112	24.3	2	0.4	87	18.9	0	0.0	31	6.7	229	49.7
Northern	298	175	58.7	1	0.3	55	18.5	0	0.0	6	2.0	61	20.5
Southern	710	166	23.4	0	0.0	101	14.2	0	0.0	11	1.5	432	60.8
Western	317	128	40.4	0	0.0	71	22.4	0	0.0	1	0.3	117	36.9
Vermont	159	37	23.3	0	0.0	34	21.4	0	0.0	1	0.6	87	54.7
THIRD CIRCUIT	1,698	672	39.6	4	0.2	309	18.2	10	0.6	24	1.4	679	40.0
Delaware	107	65	60.7	1	0.9	6	5.6	8	7.5	0	0.0	27	25.2
New Jersey	567	161	28.4	1	0.2	130	22.9	0	0.0	1	0.2	274	48.3
Pennsylvania													
Eastern	361	152	42.1	1	0.3	69	19.1	1	0.3	8	2.2	130	36.0
Middle	288	123	42.7	0	0.0	61	21.2	1	0.3	11	3.8	92	31.9
Western	332	145	43.7	1	0.3	41	12.3	0	0.0	3	0.9	142	42.8
Virgin Islands	43	26	60.5	0	0.0	2	4.7	0	0.0	1	2.3	14	32.6
FOURTH CIRCUIT	3,080	1,417	46.0	15	0.5	384	12.5	1	0.0	53	1.7	1,210	39.3
Maryland	311	79	25.4	4	1.3	47	15.1	0	0.0	12	3.9	169	54.3
North Carolina													
Eastern	595	364	61.2	3	0.5	128	21.5	0	0.0	3	0.5	97	16.3
Middle	228	113	49.6	0	0.0	9	3.9	1	0.4	2	0.9	103	45.2
Western	245	111	45.3	2	0.8	26	10.6	0	0.0	4	1.6	102	41.6
South Carolina	431	157	36.4	2	0.5	80	18.6	0	0.0	11	2.6	181	42.0
Virginia													
Eastern	652	350	53.7	3	0.5	29	4.4	0	0.0	13	2.0	257	39.4
Western	193	58	30.1	0	0.0	39	20.2	0	0.0	3	1.6	93	48.2
West Virginia													
Northern	267	119	44.6	0	0.0	19	7.1	0	0.0	1	0.4	128	47.9
Southern	158	66	41.8	1	0.6	7	4.4	0	0.0	4	2.5	80	50.6

Table 9 (cont.)

CIRCUIT	TOTAL	WITHIN GUIDELINE		DEPARTURE								VARIANCE	
		RANGE		UPWARD		\$5K1.1		\$5K3.1		DOWNWARD			
		N	%	N	%	N	%	N	%	N	%	N	%
FIFTH CIRCUIT	14,985	10,623	70.9	56	0.4	578	3.9	173	1.2	377	2.5	3,178	21.2
Louisiana													
Eastern	232	153	65.9	6	2.6	20	8.6	1	0.4	1	0.4	51	22.0
Middle	69	46	66.7	0	0.0	11	15.9	0	0.0	0	0.0	12	17.4
Western	255	174	68.2	7	2.7	31	12.2	0	0.0	3	1.2	40	15.7
Mississippi													
Northern	140	66	47.1	2	1.4	20	14.3	0	0.0	4	2.9	48	34.3
Southern	264	161	61.0	0	0.0	30	11.4	0	0.0	3	1.1	70	26.5
Texas													
Eastern	745	442	59.3	9	1.2	44	5.9	0	0.0	8	1.1	242	32.5
Northern	946	630	66.6	10	1.1	84	8.9	0	0.0	10	1.1	212	22.4
Southern	5,253	3,546	67.5	19	0.4	200	3.8	160	3.0	313	6.0	1,015	19.3
Western	7,081	5,405	76.3	3	0.0	138	1.9	12	0.2	35	0.5	1,488	21.0
SIXTH CIRCUIT	3,111	1,176	37.8	16	0.5	455	14.6	10	0.3	159	5.1	1,295	41.6
Kentucky													
Eastern	272	141	51.8	3	1.1	46	16.9	0	0.0	8	2.9	74	27.2
Western	299	95	31.8	3	1.0	58	19.4	8	2.7	12	4.0	123	41.1
Michigan													
Eastern	572	212	37.1	1	0.2	42	7.3	0	0.0	22	3.8	295	51.6
Western	186	110	59.1	1	0.5	14	7.5	0	0.0	9	4.8	52	28.0
Ohio													
Northern	485	166	34.2	1	0.2	80	16.5	0	0.0	16	3.3	222	45.8
Southern	398	94	23.6	3	0.8	68	17.1	2	0.5	71	17.8	160	40.2
Tennessee													
Eastern	385	181	47.0	2	0.5	81	21.0	0	0.0	5	1.3	116	30.1
Middle	251	58	23.1	0	0.0	37	14.7	0	0.0	12	4.8	144	57.4
Western	263	119	45.2	2	0.8	29	11.0	0	0.0	4	1.5	109	41.4
SEVENTH CIRCUIT	1,535	551	35.9	3	0.2	150	9.8	0	0.0	55	3.6	776	50.6
Illinois													
Central	165	41	24.8	0	0.0	24	14.5	0	0.0	3	1.8	97	58.8
Northern	434	132	30.4	0	0.0	28	6.5	0	0.0	23	5.3	251	57.8
Southern	166	100	60.2	2	1.2	20	12.0	0	0.0	9	5.4	35	21.1
Indiana													
Northern	192	99	51.6	0	0.0	28	14.6	0	0.0	0	0.0	65	33.9
Southern	247	110	44.5	0	0.0	40	16.2	0	0.0	1	0.4	96	38.9
Wisconsin													
Eastern	241	48	19.9	0	0.0	10	4.1	0	0.0	2	0.8	181	75.1
Western	90	21	23.3	1	1.1	0	0.0	0	0.0	17	18.9	51	56.7
EIGHTH CIRCUIT	3,363	1,424	42.3	25	0.7	409	12.2	28	0.8	47	1.4	1,430	42.5
Arkansas													
Eastern	397	203	51.1	0	0.0	32	8.1	0	0.0	0	0.0	162	40.8
Western	129	45	34.9	0	0.0	10	7.8	1	0.8	1	0.8	72	55.8
Iowa													
Northern	217	103	47.5	8	3.7	34	15.7	0	0.0	2	0.9	70	32.3
Southern	246	94	38.2	1	0.4	20	8.1	0	0.0	1	0.4	130	52.8
Minnesota	286	94	32.9	2	0.7	41	14.3	1	0.3	17	5.9	131	45.8
Missouri													
Eastern	697	294	42.2	1	0.1	76	10.9	0	0.0	5	0.7	321	46.1
Western	476	160	33.6	1	0.2	91	19.1	0	0.0	8	1.7	216	45.4
Nebraska	328	160	48.8	1	0.3	9	2.7	24	7.3	4	1.2	130	39.6
North Dakota	237	86	36.3	3	1.3	94	39.7	1	0.4	2	0.8	51	21.5
South Dakota	350	185	52.9	8	2.3	2	0.6	1	0.3	7	2.0	147	42.0

Table 9 (cont.)

CIRCUIT	TOTAL	WITHIN GUIDELINE		DEPARTURE								VARIANCE	
		RANGE		UPWARD		\$5K1.1		\$5K3.1		DOWNWARD			
		N	%	N	%	N	%	N	%	N	%	N	%
NINTH CIRCUIT	7,922	2,332	29.4	25	0.3	642	8.1	2,294	29.0	333	4.2	2,296	29.0
Alaska	104	37	35.6	0	0.0	6	5.8	0	0.0	4	3.8	57	54.8
Arizona	2,962	1,026	34.6	6	0.2	71	2.4	1,271	42.9	49	1.7	539	18.2
California													
Central	617	186	30.1	4	0.6	75	12.2	13	2.1	40	6.5	299	48.5
Eastern	353	115	32.6	3	0.8	72	20.4	4	1.1	5	1.4	154	43.6
Northern	280	36	12.9	1	0.4	34	12.1	0	0.0	15	5.4	194	69.3
Southern	1,945	477	24.5	5	0.3	89	4.6	976	50.2	193	9.9	205	10.5
Guam	21	7	33.3	0	0.0	7	33.3	0	0.0	0	0.0	7	33.3
Hawaii	97	25	25.8	0	0.0	36	37.1	0	0.0	0	0.0	36	37.1
Idaho	237	85	35.9	0	0.0	44	18.6	7	3.0	8	3.4	93	39.2
Montana	302	96	31.8	1	0.3	67	22.2	0	0.0	7	2.3	131	43.4
Nevada	156	29	18.6	0	0.0	7	4.5	21	13.5	6	3.8	93	59.6
Northern Mariana Islands	9	6	66.7	1	11.1	0	0.0	0	0.0	0	0.0	2	22.2
Oregon	360	73	20.3	2	0.6	72	20.0	0	0.0	2	0.6	211	58.6
Washington													
Eastern	243	68	28.0	1	0.4	57	23.5	1	0.4	3	1.2	113	46.5
Western	236	66	28.0	1	0.4	5	2.1	1	0.4	1	0.4	162	68.6
TENTH CIRCUIT	3,980	1,877	47.2	37	0.9	245	6.2	530	13.3	138	3.5	1,153	29.0
Colorado	265	73	27.5	2	0.8	59	22.3	11	4.2	6	2.3	114	43.0
Kansas	257	104	40.5	2	0.8	32	12.5	9	3.5	13	5.1	97	37.7
New Mexico	1,688	941	55.7	20	1.2	51	3.0	392	23.2	66	3.9	218	12.9
Oklahoma													
Eastern	205	136	66.3	2	1.0	14	6.8	0	0.0	2	1.0	51	24.9
Northern	417	226	54.2	7	1.7	35	8.4	0	0.0	30	7.2	119	28.5
Western	433	196	45.3	0	0.0	13	3.0	0	0.0	0	0.0	224	51.7
Utah	571	131	22.9	2	0.4	32	5.6	104	18.2	14	2.5	288	50.4
Wyoming	144	70	48.6	2	1.4	9	6.3	14	9.7	7	4.9	42	29.2
ELEVENTH CIRCUIT	3,894	2,169	55.7	2	0.1	359	9.2	10	0.3	37	1.0	1,317	33.8
Alabama													
Middle	189	92	48.7	0	0.0	15	7.9	1	0.5	2	1.1	79	41.8
Northern	383	245	64.0	0	0.0	47	12.3	1	0.3	2	0.5	88	23.0
Southern	227	137	60.4	0	0.0	41	18.1	3	1.3	5	2.2	41	18.1
Florida													
Middle	1,069	543	50.8	1	0.1	124	11.6	0	0.0	4	0.4	397	37.1
Northern	206	95	46.1	0	0.0	25	12.1	5	2.4	5	2.4	76	36.9
Southern	998	588	58.9	0	0.0	47	4.7	0	0.0	6	0.6	357	35.8
Georgia													
Middle	301	211	70.1	0	0.0	11	3.7	0	0.0	3	1.0	76	25.2
Northern	330	112	33.9	0	0.0	27	8.2	0	0.0	9	2.7	182	55.2
Southern	191	146	76.4	1	0.5	22	11.5	0	0.0	1	0.5	21	11.0

¹ Of the 47,894 cases, 458 were excluded because information was missing from the submitted documents that prevented the comparison of the sentence and the guideline range. Descriptions of variables used in this table are provided in Appendix A.

SOURCE: U.S. Sentencing Commission, Preliminary 2025 Datafile, USSCFY25 (October 1, 2024, through June 30, 2025).

Table 10

**SENTENCE IMPOSED RELATIVE TO THE GUIDELINE RANGE
BY TYPE OF CRIME¹**

3rd Quarter 2025 Preliminary Cumulative Data (October 1, 2024, through June 30, 2025)

TYPE OF CRIME	TOTAL	WITHIN GUIDELINE		DEPARTURE									
		RANGE		UPWARD		\$5K1.1		\$5K3.1		DOWNWARD		VARIANCE	
		N	%	N	%	N	%	N	%	N	%	N	%
TOTAL	47,436	23,565	49.7	197	0.4	4,076	8.6	3,060	6.5	1,359	2.9	15,179	32.0
Administration of Justice	417	211	50.6	5	1.2	24	5.8	0	0.0	13	3.1	164	39.3
Antitrust	15	6	40.0	0	0.0	5	33.3	0	0.0	1	6.7	3	20.0
Arson	60	30	50.0	2	3.3	7	11.7	0	0.0	2	3.3	19	31.7
Assault	624	273	43.8	22	3.5	21	3.4	0	0.0	23	3.7	285	45.7
Bribery/Corruption	249	54	21.7	0	0.0	66	26.5	1	0.4	10	4.0	118	47.4
Burglary/Trespass	34	22	64.7	0	0.0	1	2.9	0	0.0	0	0.0	11	32.4
Child Pornography	1,035	388	37.5	3	0.3	20	1.9	0	0.0	28	2.7	596	57.6
Commercialized Vice	72	43	59.7	3	4.2	5	6.9	0	0.0	1	1.4	20	27.8
Drug Possession	56	48	85.7	0	0.0	0	0.0	0	0.0	0	0.0	8	14.3
Drug Trafficking	12,253	3,529	28.8	37	0.3	2,399	19.6	557	4.5	450	3.7	5,281	43.1
Environmental	111	56	50.5	0	0.0	13	11.7	0	0.0	6	5.4	36	32.4
Extortion/Racketeering	49	18	36.7	0	0.0	9	18.4	0	0.0	0	0.0	22	44.9
Firearms	5,890	2,972	50.5	42	0.7	306	5.2	3	0.1	170	2.9	2,397	40.7
Food and Drug	29	22	75.9	0	0.0	0	0.0	0	0.0	0	0.0	7	24.1
Forgery/Counter/Copyright	60	23	38.3	0	0.0	4	6.7	0	0.0	6	10.0	27	45.0
Fraud/Theft/Embezzlement	3,787	1,640	43.3	7	0.2	516	13.6	5	0.1	86	2.3	1,533	40.5
Immigration	17,009	11,484	67.5	35	0.2	143	0.8	2,484	14.6	366	2.2	2,497	14.7
Individual Rights	60	23	38.3	0	0.0	3	5.0	0	0.0	1	1.7	33	55.0
Kidnapping	117	36	30.8	1	0.9	19	16.2	1	0.9	8	6.8	52	44.4
Manslaughter	73	33	45.2	3	4.1	1	1.4	0	0.0	4	5.5	32	43.8
Money Laundering	1,000	279	27.9	3	0.3	237	23.7	6	0.6	45	4.5	430	43.0
Murder	324	133	41.0	7	2.2	61	18.8	2	0.6	18	5.6	103	31.8
National Defense	538	424	78.8	0	0.0	23	4.3	0	0.0	9	1.7	82	15.2
Obscenity/Other Sex Offenses	244	118	48.4	1	0.4	3	1.2	0	0.0	5	2.0	117	48.0
Prison Offenses	297	196	66.0	0	0.0	5	1.7	0	0.0	14	4.7	82	27.6
Robbery	941	377	40.1	12	1.3	89	9.5	0	0.0	41	4.4	422	44.8
Sexual Abuse	1,037	450	43.4	12	1.2	41	4.0	1	0.1	38	3.7	495	47.7
Stalking/Harassing	204	83	40.7	2	1.0	5	2.5	0	0.0	6	2.9	108	52.9
Tax	309	75	24.3	0	0.0	45	14.6	0	0.0	8	2.6	181	58.6
Other	542	519	95.8	0	0.0	5	0.9	0	0.0	0	0.0	18	3.3

¹ Of the 47,894 cases, 458 were excluded because information was missing from the submitted documents that prevented the comparison of the sentence and the guideline range. Descriptions of variables used in this table are provided in Appendix A.

SOURCE: U.S. Sentencing Commission, Preliminary 2025 Datafile, USSCFY25 (October 1, 2024, through June 30, 2025).

Table 11

SENTENCE IMPOSED RELATIVE TO THE GUIDELINE RANGE BY PRIMARY SENTENCING GUIDELINE¹

3rd Quarter 2025 Preliminary Cumulative Data (October 1, 2024, through June 30, 2025)

Guideline	Within Guideline		Departure				Variance	Guideline	Within Guideline		Departure				Variance
	Total	Range	Up	\$5K1.1	\$5K3.1	Down			Total	Range	Up	\$5K1.1	\$5K3.1	Down	
§2A1.1	206	87	1	38	0	11	69	§2D1.8	6	1	0	3	0	0	2
§2A1.2	78	31	6	8	2	6	25	§2D1.9	0	0	0	0	0	0	0
§2A1.3	39	18	3	1	0	2	15	§2D1.10	0	0	0	0	0	0	0
§2A1.4	34	15	0	0	0	2	17	§2D1.11	1	0	0	1	0	0	0
§2A1.5	25	8	0	11	0	1	5	§2D1.12	1	0	0	1	0	0	0
§2A2.1	151	63	2	16	0	3	67	§2D1.13	0	0	0	0	0	0	0
§2A2.2	402	173	19	3	0	18	189	§2D1.14	0	0	0	0	0	0	0
§2A2.3	40	24	1	0	0	0	15	§2D2.1	39	32	0	0	0	0	7
§2A2.4	166	96	3	0	0	6	61	§2D2.2	20	17	0	1	0	0	2
§2A3.1	91	35	1	2	0	7	46	§2D2.3	0	0	0	0	0	0	0
§2A3.2	23	15	2	0	0	0	6	§2D3.1	3	3	0	0	0	0	0
§2A3.3	6	2	0	1	0	0	3	§2D3.2	0	0	0	0	0	0	0
§2A3.4	29	13	4	0	0	0	12	§2D3.3	0	0	0	0	0	0	0
§2A3.5	221	113	0	1	0	5	102	§2D3.4	0	0	0	0	0	0	0
§2A4.1	114	36	1	19	1	8	49	§2D3.5	0	0	0	0	0	0	0
§2A4.2	0	0	0	0	0	0	0	§2E1.1	6	2	0	1	0	0	3
§2A5.1	0	0	0	0	0	0	0	§2E1.2	2	2	0	0	0	0	0
§2A5.2	22	14	0	0	0	0	8	§2E1.3	0	0	0	0	0	0	0
§2A5.3	0	0	0	0	0	0	0	§2E1.4	3	0	0	0	0	0	3
§2A6.1	125	53	1	1	0	5	65	§2E1.5	0	0	0	0	0	0	0
§2A6.2	74	29	1	4	0	1	39	§2E2.1	3	0	0	2	0	0	1
§2B1.1	3,592	1,496	7	502	5	81	1,501	§2E3.1	55	35	3	3	0	1	13
§2B1.2	0	0	0	0	0	0	0	§2E3.2	0	0	0	0	0	0	0
§2B1.3	0	0	0	0	0	0	0	§2E3.3	0	0	0	0	0	0	0
§2B1.4	21	0	0	4	0	2	15	§2E4.1	4	1	0	3	0	0	0
§2B1.5	15	5	0	3	0	0	7	§2E5.1	2	1	0	0	0	0	1
§2B1.6 ²	36	33	0	3	0	0	0	§2E5.2	0	0	0	0	0	0	0
§2B2.1	20	8	0	1	0	0	11	§2E5.3	0	0	0	0	0	0	0
§2B2.2	0	0	0	0	0	0	0	§2E5.4	0	0	0	0	0	0	0
§2B2.3	11	11	0	0	0	0	0	§2E5.5	0	0	0	0	0	0	0
§2B3.1	928	374	12	88	0	40	414	§2E5.6	0	0	0	0	0	0	0
§2B3.2	19	8	0	2	0	0	9	§2F1.1	0	0	0	0	0	0	0
§2B3.3	5	2	0	0	0	0	3	§2F1.2	0	0	0	0	0	0	0
§2B4.1	79	20	0	35	0	0	24	§2G1.1	33	13	0	3	0	1	16
§2B5.1	33	16	0	2	0	5	10	§2G1.2	0	0	0	0	0	0	0
§2B5.2	0	0	0	0	0	0	0	§2G1.3	279	153	4	15	1	4	102
§2B5.3	27	7	0	2	0	1	17	§2G2.1	584	226	1	21	0	25	311
§2B5.4	0	0	0	0	0	0	0	§2G2.2	1,034	388	3	20	0	28	595
§2B6.1	2	0	0	2	0	0	0	§2G2.3	0	0	0	0	0	0	0
§2C1.1	165	31	0	31	1	10	92	§2G2.4	0	0	0	0	0	0	0
§2C1.2	1	0	0	0	0	0	1	§2G2.5	0	0	0	0	0	0	0
§2C1.3	2	2	0	0	0	0	0	§2G2.6	0	0	0	0	0	0	0
§2C1.4	0	0	0	0	0	0	0	§2G3.1	20	3	1	2	0	0	14
§2C1.5	0	0	0	0	0	0	0	§2G3.2	0	0	0	0	0	0	0
§2C1.6	0	0	0	0	0	0	0	§2H1.1	42	11	0	3	0	1	27
§2C1.7	0	0	0	0	0	0	0	§2H1.2	0	0	0	0	0	0	0
§2C1.8	0	0	0	0	0	0	0	§2H1.3	0	0	0	0	0	0	0
§2D1.1	12,078	3,476	37	2,377	557	438	5,193	§2H1.4	0	0	0	0	0	0	0
§2D1.2	105	41	0	12	0	10	42	§2H1.5	0	0	0	0	0	0	0
§2D1.3	0	0	0	0	0	0	0	§2H2.1	5	2	0	0	0	0	3
§2D1.4	0	0	0	0	0	0	0	§2H3.1	2	2	0	0	0	0	0
§2D1.5	8	2	0	4	0	0	2	§2H3.2	0	0	0	0	0	0	0
§2D1.6	0	0	0	0	0	0	0	§2H3.3	6	6	0	0	0	0	0
§2D1.7	1	1	0	0	0	0	0	§2H4.1	4	2	0	0	0	0	2

Table 11 (cont.)

Guideline	Within Guideline				Departure				Variance	Guideline	Within Guideline				Departure				Variance
	Total	Range	Up	\$5K1.1	\$5K3.1	Down	Up	\$5K1.1			\$5K3.1	Down							
§2H4.2	0	0	0	0	0	0	0	0	§2M5.2	127	40	0	14	0	5	68			
§2J1.1	0	0	0	0	0	0	0	0	§2M5.3	8	2	0	1	0	1	4			
§2J1.2	85	35	1	16	0	1	32		§2M6.1	4	1	0	2	0	0	1			
§2J1.3	8	4	0	0	0	1	3		§2M6.2	1	1	0	0	0	0	0			
§2J1.4	9	6	0	0	0	0	3		§2N1.1	6	0	0	0	0	0	6			
§2J1.5	1	0	0	0	0	0	1		§2N1.2	0	0	0	0	0	0	0			
§2J1.6	19	10	0	0	0	2	7		§2N1.3	0	0	0	0	0	0	0			
§2J1.7	0	0	0	0	0	0	0		§2N2.1	19	18	0	0	0	0	1			
§2J1.8	0	0	0	0	0	0	0		§2N3.1	0	0	0	0	0	0	0			
§2J1.9	0	0	0	0	0	0	0		§2P1.1	195	142	0	2	0	4	47			
§2K1.1	2	2	0	0	0	0	0		§2P1.2	76	40	0	3	0	6	27			
§2K1.2	0	0	0	0	0	0	0		§2P1.3	5	2	0	0	0	0	3			
§2K1.3	11	4	0	2	0	0	5		§2P1.4	0	0	0	0	0	0	0			
§2K1.4	59	30	2	7	0	2	18		§2Q1.1	1	0	0	1	0	0	0			
§2K1.5	1	0	0	0	0	0	1		§2Q1.2	26	7	0	5	0	0	14			
§2K1.6	0	0	0	0	0	0	0		§2Q1.3	9	4	0	2	0	2	1			
§2K1.7	0	0	0	0	0	0	0		§2Q1.4	0	0	0	0	0	0	0			
§2K2.1	5,644	2,807	37	292	3	167	2,338		§2Q1.5	0	0	0	0	0	0	0			
§2K2.2	0	0	0	0	0	0	0		§2Q1.6	0	0	0	0	0	0	0			
§2K2.3	0	0	0	0	0	0	0		§2Q2.1	64	37	0	4	0	3	20			
§2K2.4 ³	189	142	5	10	0	0	32		§2Q2.2	0	0	0	0	0	0	0			
§2K2.5	8	7	0	0	0	0	1		§2R1.1	15	6	0	5	0	1	3			
§2K2.6	0	0	0	0	0	0	0		§2S1.1	856	209	1	226	5	39	376			
§2K3.1	0	0	0	0	0	0	0		§2S1.2	0	0	0	0	0	0	0			
§2K3.2	0	0	0	0	0	0	0		§2S1.3	135	69	2	10	1	5	48			
§2L1.1	3,036	1,571	6	106	738	45	570		§2S1.4	0	0	0	0	0	0	0			
§2L1.2	12,136	8,399	27	27	1,556	315	1,812		§2T1.1	170	45	0	21	0	7	97			
§2L1.3	0	0	0	0	0	0	0		§2T1.2	0	0	0	0	0	0	0			
§2L2.1	40	26	0	6	0	2	6		§2T1.3	0	0	0	0	0	0	0			
§2L2.2	350	297	0	2	0	0	51		§2T1.4	77	16	0	17	0	0	44			
§2L2.3	0	0	0	0	0	0	0		§2T1.5	0	0	0	0	0	0	0			
§2L2.4	0	0	0	0	0	0	0		§2T1.6	46	8	0	3	0	1	34			
§2L2.5	0	0	0	0	0	0	0		§2T1.7	0	0	0	0	0	0	0			
§2M1.1	0	0	0	0	0	0	0		§2T1.8	0	0	0	0	0	0	0			
§2M2.1	0	0	0	0	0	0	0		§2T1.9	7	2	0	2	0	0	3			
§2M2.2	0	0	0	0	0	0	0		§2T2.1	0	0	0	0	0	0	0			
§2M2.3	0	0	0	0	0	0	0		§2T2.2	0	0	0	0	0	0	0			
§2M2.4	0	0	0	0	0	0	0		§2T3.1	6	2	0	2	0	0	2			
§2M3.1	0	0	0	0	0	0	0		§2T3.2	0	0	0	0	0	0	0			
§2M3.2	2	0	0	0	0	2	0		§2T4.1	0	0	0	0	0	0	0			
§2M3.3	2	0	0	1	0	0	1		§2X1.1	9	2	0	3	0	0	4			
§2M3.4	0	0	0	0	0	0	0		§2X2.1	0	0	0	0	0	0	0			
§2M3.5	0	0	0	0	0	0	0		§2X3.1	60	16	0	13	0	3	28			
§2M3.6	0	0	0	0	0	0	0		§2X4.1	117	55	1	8	0	3	50			
§2M3.7	0	0	0	0	0	0	0		§2X5.1	0	0	0	0	0	0	0			
§2M3.8	0	0	0	0	0	0	0		§2X5.2	152	149	0	0	0	0	3			
§2M3.9	0	0	0	0	0	0	0		§2X6.1	0	0	0	0	0	0	0			
§2M4.1	0	0	0	0	0	0	0		§2X7.1	0	0	0	0	0	0	0			
§2M5.1	14	2	0	5	0	1	6		§2X7.2	0	0	0	0	0	0	0			
TOTAL									44,955	21,473	195	4,070	2,870	1,340	15,007				

¹ Of the 47,894 cases, 2,939 were excluded due to one or both of the following reasons: information was missing from the submitted documents that prevented the comparison of the sentence and the guideline range (458) or missing guideline applied (2,922). Descriptions of variables used in this table are provided in Appendix A.

² In these cases, the sentenced individual was convicted of violating 18 U.S.C. § 1028A (Aggravated Identity Theft) as the only count or counts of conviction. The *Guidelines Manual* provides punishment for this type of offense under §2B1.6.

³ In these cases, the sentenced individual was convicted of violating 18 U.S.C. § 924(c) (Use of Firearm, Armor-Piercing Ammunition, or Explosives During or in Relation to Certain Crimes) as the only count or counts of conviction. The *Guidelines Manual* provides punishment for this type of offense under §2K2.4.

SOURCE: U.S. Sentencing Commission, Preliminary 2025 Datafile, USSCFY25 (October 1, 2024, through June 30, 2025).

Table 12

ATTRIBUTION CATEGORY FOR SENTENCES OUTSIDE OF THE GUIDELINE RANGE¹
3rd Quarter 2025 Preliminary Cumulative Data (October 1, 2024, through June 30, 2025)

	TOTAL CASES	Pursuant to a Plea Agreement									
		§5K1.1 Substantial Assistance ²		§5K3.1 Early Disposition ²		Binding Plea Accepted by Court		Plea with Departure Court Finds Reasonable		Plea States Gov't Will Not Oppose	
		N	%	N	%	N	%	N	%	N	%
TOTAL	23,871	4,094	17.2	3,099	13.0	3,574	15.0	4,260	17.8	295	1.2
Departures	8,692	4,076	46.9	3,094	35.6	1,981	22.8	2,885	33.2	131	1.5
Upward Departure	197	0	0.0	0	0.0	56	28.4	34	17.3	0	0.0
Downward Departure											
§5K1.1 Substantial Assistance	4,076	4,076	100.0	34	0.8	115	2.8	885	21.7	12	0.3
§5K3.1 Early Disposition Program	3,060	0	0.0	3,060	100.0	1,562	51.0	1,677	54.8	106	3.5
Other Government Motion	652	0	0.0	0	0.0	248	38.0	289	44.3	13	2.0
Non-Government Departure	707	0	0.0	0	0.0	0	0.0	0	0.0	0	0.0
Variances	15,179	18	0.1	5	0.0	1,593	10.5	1,375	9.1	164	1.1
Upward Variance	2,073	18	0.9	5	0.2	192	9.3	111	5.4	0	0.0
Downward Variance											
Government Motion	4,725	0	0.0	0	0.0	1,401	29.7	1,264	26.8	164	3.5
Non-Government Variance	8,381	0	0.0	0	0.0	0	0.0	0	0.0	0	0.0

Table 12 (cont.)

	Pursuant to a Motion Not in a Plea Agreement											
	Other Government Motion		Defense Motion/Gov't Did Not Object		Defense Motion/Gov't Did Object		Joint Motion		Other than a Plea/Motion by Parties		No Information Available	
	N	%	N	%	N	%	N	%	N	%	N	%
TOTAL	3,808	16.0	3,347	14.0	5,437	22.8	1,586	6.6	4,089	17.1	1,489	6.2
Departures	3,073	35.4	1,268	14.6	1,130	13.0	609	7.0	661	7.6	115	1.3
Upward Departure	58	29.4	2	1.0	2	1.0	6	3.0	43	21.8	15	7.6
Downward Departure												
§5K1.1 Substantial Assistance	2,804	68.8	506	12.4	579	14.2	322	7.9	352	8.6	0	0.0
§5K3.1 Early Disposition Program	145	4.7	334	10.9	312	10.2	174	5.7	73	2.4	0	0.0
Other Government Motion	66	10.1	60	9.2	67	10.3	107	16.4	45	6.9	19	2.9
Non-Government Departure	0	0.0	366	51.8	170	24.0	0	0.0	148	20.9	81	11.5
Variances	735	4.8	2,079	13.7	4,307	28.4	977	6.4	3,428	22.6	1,374	9.1
Upward Variance	291	14.0	7	0.3	8	0.4	13	0.6	1,251	60.3	237	11.4
Downward Variance												
Government Motion	444	9.4	344	7.3	228	4.8	964	20.4	440	9.3	125	2.6
Non-Government Variance	0	0.0	1,728	20.6	4,071	48.6	0	0.0	1,737	20.7	1,012	12.1

¹ Multiple attributions may be made on the Statement of Reasons (SOR). Therefore, the numbers reported in this table may exceed the number of total cases. For example, among SORs with an attribution, 8,615 cases indicated more than one attribution. Only sentenced individuals whose sentence is outside the guideline range are included in this table. Descriptions of variables used in this table are provided in Appendix A.

² For cases in which the court submitted a SOR form with a revision date of 11/15 or later, information for these categories was taken from Part V.C. of the SOR. For cases in which the court submitted the prior version of the SOR form, the information was taken from Part V.B. of the SOR form.

SOURCE: U.S. Sentencing Commission, Preliminary 2025 Datafile, USSCFY25 (October 1, 2024, through June 30, 2025).

Table 13

**EXTENT OF UPWARD DEPARTURES
BY TYPE OF CRIME¹**

3rd Quarter 2025 Preliminary Cumulative Data (October 1, 2024, through June 30, 2025)

TYPE OF CRIME	N	Mean			Median		
		Sentence In Months	Increase In Months	Percent Increase	Sentence In Months	Increase In Months	Percent Increase
TOTAL	195	113	43	106.3	78	23	49.6
Administration of Justice	5	53	35	152.2	36	18	150.0
Antitrust	0	--	--	--	--	--	--
Arson	2	--	--	--	--	--	--
Assault	22	99	36	70.4	76	22	46.3
Bribery/Corruption	0	--	--	--	--	--	--
Burglary/Trespass	0	--	--	--	--	--	--
Child Pornography	3	114	20	27.8	100	13	14.9
Commercialized Vice	3	18	3	15.9	15	1	7.1
Drug Possession	0	--	--	--	--	--	--
Drug Trafficking	37	133	54	203.9	100	33	71.4
Environmental	0	--	--	--	--	--	--
Extortion/Racketeering	0	--	--	--	--	--	--
Firearms	42	91	32	78.9	78	22	36.8
Food and Drug	0	--	--	--	--	--	--
Forgery/Counter/Copyright	0	--	--	--	--	--	--
Fraud/Theft/Embezzlement	7	108	54	135.8	72	22	49.6
Immigration	35	32	14	83.3	24	5	42.9
Individual Rights	0	--	--	--	--	--	--
Kidnapping	1	--	--	--	--	--	--
Manslaughter	3	160	76	95.1	180	102	130.8
Money Laundering	3	42	31	370.8	48	42	400.0
Murder	6	404	140	61.2	420	148	63.2
National Defense	0	--	--	--	--	--	--
Obscenity/Other Sex Offenses	1	--	--	--	--	--	--
Prison Offenses	0	--	--	--	--	--	--
Robbery	11	229	67	42.1	240	65	35.1
Sexual Abuse	12	206	86	83.5	198	72	67.7
Stalking/Harassing	2	--	--	--	--	--	--
Tax	0	--	--	--	--	--	--
Other	0	--	--	--	--	--	--

¹ Of the 47,894 cases, in 197 the sentence was an upward departure from the guideline range. Due to an inability to calculate the extent of departure for cases with a sentence of life, two cases were excluded from this table. Sentences greater than 470 months and probation were included in the sentence average computations as 470 months and zero months, respectively. The information in this table includes conditions of confinement as described in USSG §5C1.1. Descriptions of variables used in this table are provided in Appendix A.

SOURCE: U.S. Sentencing Commission, Preliminary 2025 Datafile, USSCFY25 (October 1, 2024, through June 30, 2025).

Table 14

**EXTENT OF UPWARD VARIANCES
BY TYPE OF CRIME¹**

3rd Quarter 2025 Preliminary Cumulative Data (October 1, 2024, through June 30, 2025)

TYPE OF CRIME	N	Mean			Median		
		Sentence In Months	Increase In Months	Percent Increase	Sentence In Months	Increase In Months	Percent Increase
TOTAL	2,052	61	20	68.2	35	9	42.9
Administration of Justice	28	37	14	60.2	34	10	50.0
Antitrust	0	--	--	--	--	--	--
Arson	7	77	13	33.6	84	14	30.4
Assault	38	145	63	85.2	116	38	49.1
Bribery/Corruption	2	--	--	--	--	--	--
Burglary/Trespass	2	--	--	--	--	--	--
Child Pornography	32	184	59	51.2	162	36	42.9
Commercialized Vice	2	--	--	--	--	--	--
Drug Possession	2	--	--	--	--	--	--
Drug Trafficking	193	117	37	85.5	100	23	30.4
Environmental	0	--	--	--	--	--	--
Extortion/Racketeering	3	139	53	84.5	84	47	81.8
Firearms	357	89	26	55.2	78	18	33.3
Food and Drug	0	--	--	--	--	--	--
Forgery/Counter/Copyright	5	55	19	51.9	48	9	33.3
Fraud/Theft/Embezzlement	87	71	25	90.0	48	13	50.0
Immigration	1,093	22	8	65.7	14	5	50.0
Individual Rights	3	86	34	72.4	36	12	66.7
Kidnapping	2	--	--	--	--	--	--
Manslaughter	23	132	54	77.6	97	34	47.4
Money Laundering	21	141	54	65.7	90	21	66.7
Murder	13	347	66	30.3	384	55	16.1
National Defense	2	--	--	--	--	--	--
Obscenity/Other Sex Offenses	21	62	36	248.7	54	19	71.4
Prison Offenses	9	40	22	165.8	36	20	100.0
Robbery	44	162	37	33.0	168	24	24.8
Sexual Abuse	34	158	41	53.1	144	39	33.3
Stalking/Harassing	22	59	19	56.8	56	19	56.1
Tax	5	41	14	48.7	48	11	29.7
Other	2	--	--	--	--	--	--

¹ Of the 47,894 cases, in 2,073 the sentence was a variance above the guideline range. Due to an inability to calculate the extent of departure for cases with a sentence of life, five cases were excluded from this table. Also, 16 cases were excluded due to several logical criteria. Sentences greater than 470 months and probation were included in the sentence average computations as 470 months and zero months, respectively. The information in this table includes conditions of confinement as described in USSG §5C1.1. Descriptions of variables used in this table are provided in Appendix A.

SOURCE: U.S. Sentencing Commission, Preliminary 2025 Datafile, USSCFY25 (October 1, 2024, through June 30, 2025).

Table 15

**EXTENT OF §5K1.1 SUBSTANTIAL ASSISTANCE DEPARTURES
BY TYPE OF CRIME¹**

3rd Quarter 2025 Preliminary Cumulative Data (October 1, 2024, through June 30, 2025)

TYPE OF CRIME	N	Mean			Median		
		Sentence In Months	Decrease In Months	Percent Decrease	Sentence In Months	Decrease In Months	Percent Decrease
TOTAL	3,973	53	55	56.2	36	38	50.0
Administration of Justice	24	3	13	87.2	0	12	100.0
Antitrust	5	2	6	76.0	0	8	100.0
Arson	7	28	36	56.8	24	35	70.0
Assault	15	69	111	52.7	47	38	41.4
Bribery/Corruption	66	11	27	75.7	2	18	92.3
Burglary/Trespass	1	--	--	--	--	--	--
Child Pornography	18	115	57	39.9	114	51	40.6
Commercialized Vice	5	0	10	99.9	0	8	100.0
Drug Possession	0	--	--	--	--	--	--
Drug Trafficking	2,351	68	64	51.8	60	50	47.8
Environmental	13	1	11	93.0	0	8	99.8
Extortion/Racketeering	9	25	39	80.9	0	37	99.9
Firearms	306	31	30	56.1	21	21	49.8
Food and Drug	0	--	--	--	--	--	--
Forgery/Counter/Copyright	4	9	25	68.0	6	26	69.3
Fraud/Theft/Embezzlement	515	16	33	69.3	9	21	71.4
Immigration	143	20	16	49.0	13	12	44.6
Individual Rights	3	62	35	48.3	78	42	35.0
Kidnapping	16	127	113	47.0	121	115	49.0
Manslaughter	1	--	--	--	--	--	--
Money Laundering	224	39	66	66.5	23	41	63.8
Murder	37	114	121	52.0	120	119	55.4
National Defense	23	13	45	71.9	8	37	72.4
Obscenity/Other Sex Offenses	3	26	7	19.4	21	6	21.6
Prison Offenses	5	10	9	46.5	10	5	33.3
Robbery	87	73	65	48.9	59	49	46.0
Sexual Abuse	37	145	83	40.2	120	60	35.6
Stalking/Harassing	5	2	23	90.0	0	24	100.0
Tax	45	15	21	75.7	0	15	99.8
Other	5	40	35	60.4	51	36	62.2

¹ Of the 47,894 cases, in 4,076 the sentenced individual received a §5K1.1 substantial assistance departure below the guideline range. Due to an inability to calculate the extent of departure for cases with a guideline minimum of life, 57 cases were excluded from this table. Also, 46 cases were excluded due to several logical criteria. Sentences greater than 470 months and probation were included in the sentence average computations as 470 months and zero months, respectively. The information in this table includes conditions of confinement as described in USSG §5C1.1. Descriptions of variables used in this table are provided in Appendix A.

Table 16

**EXTENT OF §5K3.1 EARLY DISPOSITION PROGRAM DEPARTURES
BY TYPE OF CRIME¹
3rd Quarter 2025 Preliminary Cumulative Data (October 1, 2024, through June 30, 2025)**

TYPE OF CRIME	N	Mean			Median		
		Sentence In Months	Decrease In Months	Percent Decrease	Sentence In Months	Decrease In Months	Percent Decrease
TOTAL	3,056	12	13	50.2	8	6	46.7
Administration of Justice	0	--	--	--	--	--	--
Antitrust	0	--	--	--	--	--	--
Arson	0	--	--	--	--	--	--
Assault	0	--	--	--	--	--	--
Bribery/Corruption	1	--	--	--	--	--	--
Burglary/Trespass	0	--	--	--	--	--	--
Child Pornography	0	--	--	--	--	--	--
Commercialized Vice	0	--	--	--	--	--	--
Drug Possession	0	--	--	--	--	--	--
Drug Trafficking	557	24	41	62.9	21	36	61.9
Environmental	0	--	--	--	--	--	--
Extortion/Racketeering	0	--	--	--	--	--	--
Firearms	3	16	20	79.2	0	21	100.0
Food and Drug	0	--	--	--	--	--	--
Forgery/Counter/Copyright	0	--	--	--	--	--	--
Fraud/Theft/Embezzlement	5	4	17	86.7	0	12	100.0
Immigration	2,480	9	7	47.3	6	5	41.3
Individual Rights	0	--	--	--	--	--	--
Kidnapping	1	--	--	--	--	--	--
Manslaughter	0	--	--	--	--	--	--
Money Laundering	6	39	46	63.7	13	37	65.9
Murder	2	--	--	--	--	--	--
National Defense	0	--	--	--	--	--	--
Obscenity/Other Sex Offenses	0	--	--	--	--	--	--
Prison Offenses	0	--	--	--	--	--	--
Robbery	0	--	--	--	--	--	--
Sexual Abuse	1	--	--	--	--	--	--
Stalking/Harassing	0	--	--	--	--	--	--
Tax	0	--	--	--	--	--	--
Other	0	--	--	--	--	--	--

¹ Of the 47,894 cases, in 3,060 the sentenced individual received a §5K3.1 early disposition program departure below the guideline range. Of these, four cases were excluded due to several logical criteria. Sentences greater than 470 months and probation were included in the sentence average computations as 470 months and zero months, respectively. The information in this table includes conditions of confinement as described in USSG §5C1.1. Descriptions of variables used in this table are provided in Appendix A.

Table 17

**EXTENT OF OTHER DOWNWARD DEPARTURES
BY TYPE OF CRIME¹**

3rd Quarter 2025 Preliminary Cumulative Data (October 1, 2024, through June 30, 2025)

TYPE OF CRIME	N	Mean			Median		
		Sentence In Months	Decrease In Months	Percent Decrease	Sentence In Months	Decrease In Months	Percent Decrease
TOTAL	1,327	46	32	45.1	24	17	40.2
Administration of Justice	13	6	9	61.9	6	6	60.0
Antitrust	1	--	--	--	--	--	--
Arson	2	--	--	--	--	--	--
Assault	23	45	17	41.7	24	13	36.7
Bribery/Corruption	10	8	27	84.7	0	15	99.8
Burglary/Trespass	0	--	--	--	--	--	--
Child Pornography	26	88	36	33.4	64	33	29.2
Commercialized Vice	1	--	--	--	--	--	--
Drug Possession	0	--	--	--	--	--	--
Drug Trafficking	443	69	50	44.7	60	36	42.1
Environmental	6	5	15	79.7	0	11	100.0
Extortion/Racketeering	0	--	--	--	--	--	--
Firearms	170	36	19	38.6	30	13	28.8
Food and Drug	0	--	--	--	--	--	--
Forgery/Counter/Copyright	6	14	14	66.2	2	11	75.0
Fraud/Theft/Embezzlement	85	24	21	58.5	15	12	52.3
Immigration	365	15	11	43.3	12	9	40.0
Individual Rights	1	--	--	--	--	--	--
Kidnapping	8	139	55	29.7	108	55	34.3
Manslaughter	4	26	16	53.8	26	15	48.0
Money Laundering	41	42	49	56.5	24	24	58.8
Murder	14	178	98	37.8	198	81	32.2
National Defense	9	51	54	54.3	25	26	64.8
Obscenity/Other Sex Offenses	5	16	7	32.4	12	9	27.3
Prison Offenses	14	10	6	45.9	8	4	33.0
Robbery	40	75	27	31.4	59	27	27.8
Sexual Abuse	26	128	107	47.5	121	82	43.7
Stalking/Harassing	6	13	14	61.6	5	14	78.1
Tax	8	11	9	52.5	9	8	46.4
Other	0	--	--	--	--	--	--

¹ Of the 47,894 cases, in 1,359 the sentence was a downward departure from the guideline range, either due to a government motion for a departure (652) or a non-government departure (707). Due to an inability to calculate the extent of departure for cases with a guideline minimum of life, 17 cases were excluded from this table. Also, 15 cases were excluded due to several logical criteria. Sentences greater than 470 months and probation were included in the sentence average computations as 470 months and zero months, respectively. The information in this table includes conditions of confinement as described in USSG §5C1.1. Descriptions of variables used in this table are provided in Appendix A.

SOURCE: U.S. Sentencing Commission, Preliminary 2025 Datafile, USSCFY25 (October 1, 2024, through June 30, 2025).

Table 18

**EXTENT OF DOWNWARD VARIANCES
BY TYPE OF CRIME¹**

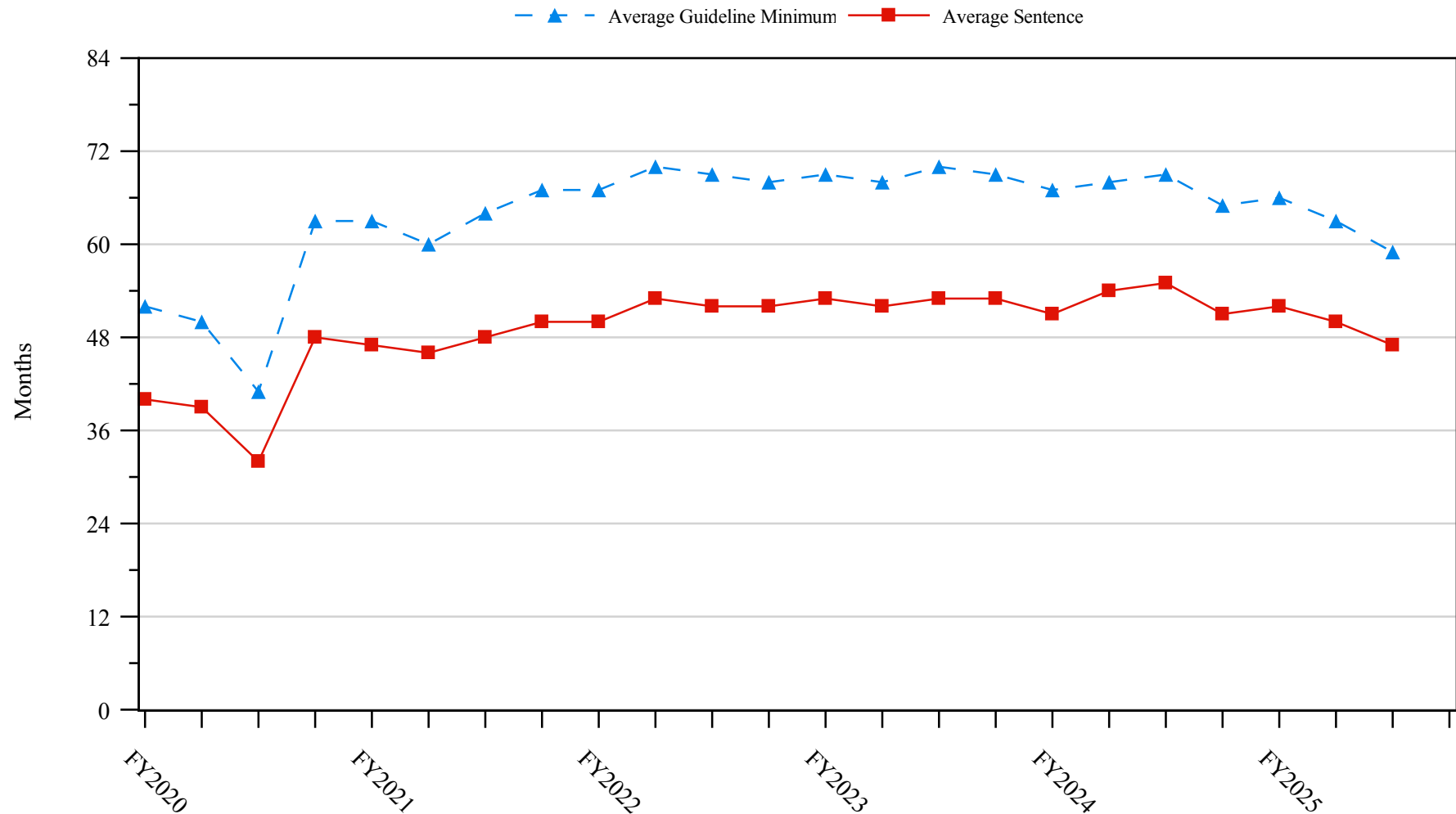
3rd Quarter 2025 Preliminary Cumulative Data (October 1, 2024, through June 30, 2025)

TYPE OF CRIME	N	Mean			Median		
		Sentence In Months	Decrease In Months	Percent Decrease	Sentence In Months	Decrease In Months	Percent Decrease
TOTAL	12,707	56	30	42.7	36	17	33.3
Administration of Justice	136	7	10	65.9	2	8	77.7
Antitrust	3	6	9	65.9	6	4	77.8
Arson	12	35	28	57.7	24	26	44.4
Assault	234	46	21	43.0	24	15	36.7
Bribery/Corruption	115	18	20	60.3	9	12	56.1
Burglary/Trespass	9	11	12	64.4	17	12	47.3
Child Pornography	544	86	48	37.2	75	39	33.3
Commercialized Vice	17	6	10	75.3	0	8	98.3
Drug Possession	6	0	3	98.7	0	2	100.0
Drug Trafficking	4,979	81	42	38.2	68	30	31.0
Environmental	36	4	10	83.4	0	8	99.8
Extortion/Racketeering	19	30	20	43.6	24	10	30.6
Firearms	2,023	37	19	42.6	27	12	31.5
Food and Drug	7	16	26	66.2	12	21	63.6
Forgery/Counter/Copyright	22	6	19	78.3	1	12	96.7
Fraud/Theft/Embezzlement	1,430	21	17	56.7	12	11	50.0
Immigration	1,396	14	8	41.3	12	6	33.2
Individual Rights	29	29	20	58.5	10	12	52.9
Kidnapping	39	124	56	35.4	120	52	30.0
Manslaughter	9	45	27	51.6	17	24	47.4
Money Laundering	394	51	33	46.6	30	16	35.9
Murder	43	186	74	31.8	204	60	22.1
National Defense	78	23	22	51.4	19	16	46.9
Obscenity/Other Sex Offenses	96	11	9	50.0	12	8	37.1
Prison Offenses	73	11	9	49.3	8	7	48.2
Robbery	368	87	27	28.7	72	21	22.1
Sexual Abuse	319	176	71	29.7	180	60	26.7
Stalking/Harassing	83	12	16	61.7	9	12	55.6
Tax	172	12	13	60.9	8	12	55.6
Other	16	20	17	63.2	5	10	64.2

¹ Of the 47,894 cases, in 13,106 the sentence was a variance below the guideline range, either due to a government motion for a variance (4,725) or a non-government variance (8,381). Due to an inability to calculate the extent of departure for cases with a guideline minimum of life, 181 cases were excluded from this table. Also, 218 cases were excluded due to several logical criteria. Sentences greater than 470 months and probation were included in the sentence average computations as 470 months and zero months, respectively. The information in this table includes conditions of confinement as described in USSG §5C1.1. Descriptions of variables used in this table are provided in Appendix A.

SOURCE: U.S. Sentencing Commission, Preliminary 2025 Datafile, USSCFY25 (October 1, 2024, through June 30, 2025).

Figure 5
SENTENCE LENGTH AND GUIDELINE MINIMUM QUARTERLY DATA
FOR SENTENCED INDIVIDUALS¹
Fiscal Years 2020 - 2024,
3rd Quarter 2025 Preliminary Cumulative Data (October 1, 2024, through June 30, 2025)



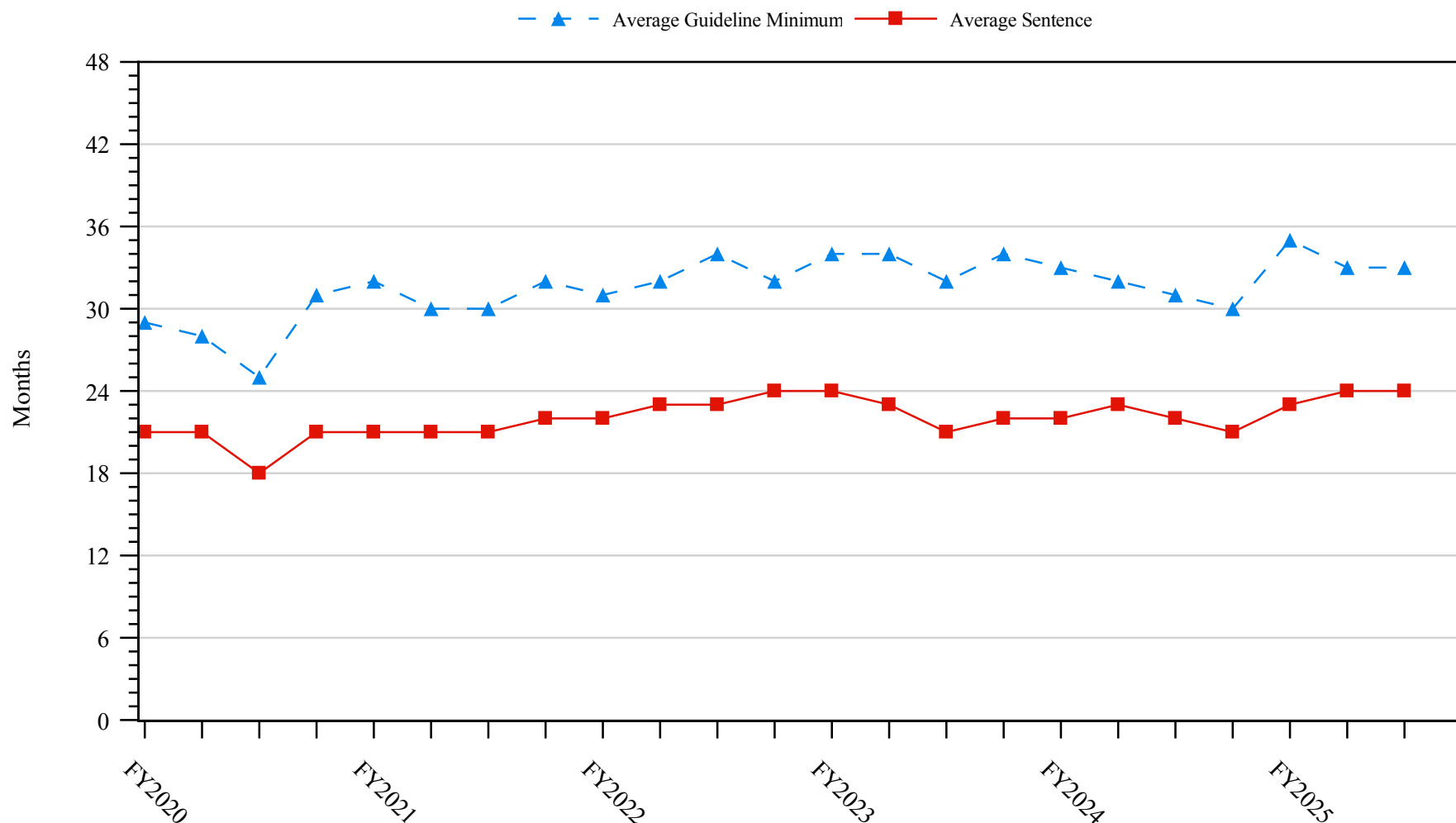
¹ Cases with guideline minimums of life or probation were included in the guideline minimum average computations as 470 months and zero months, respectively. Cases with sentences of 470 months or greater (including life) or probation were included in the sentence average computations as 470 months and zero months, respectively. The information presented in this figure includes conditions of confinement as described in USSG §5C1.1. Guideline minimums account for applicable statutory mandatory penalties. Descriptions of variables used in this figure are provided in Appendix A.

SOURCE: U.S. Sentencing Commission, 2020 - 2024 Datafiles, USSCFY20 - USSCFY24, and Preliminary Data from USSCFY25 (October 1, 2024, through June 30, 2025).

Figure 6

**SENTENCE LENGTH AND GUIDELINE MINIMUM QUARTERLY DATA
FOR INDIVIDUALS SENTENCED UNDER §2B1.1 (THEFT, PROPERTY DESTRUCTION, AND FRAUD)¹**

**Fiscal Years 2020 - 2024,
3rd Quarter 2025 Preliminary Cumulative Data (October 1, 2024, through June 30, 2025)**

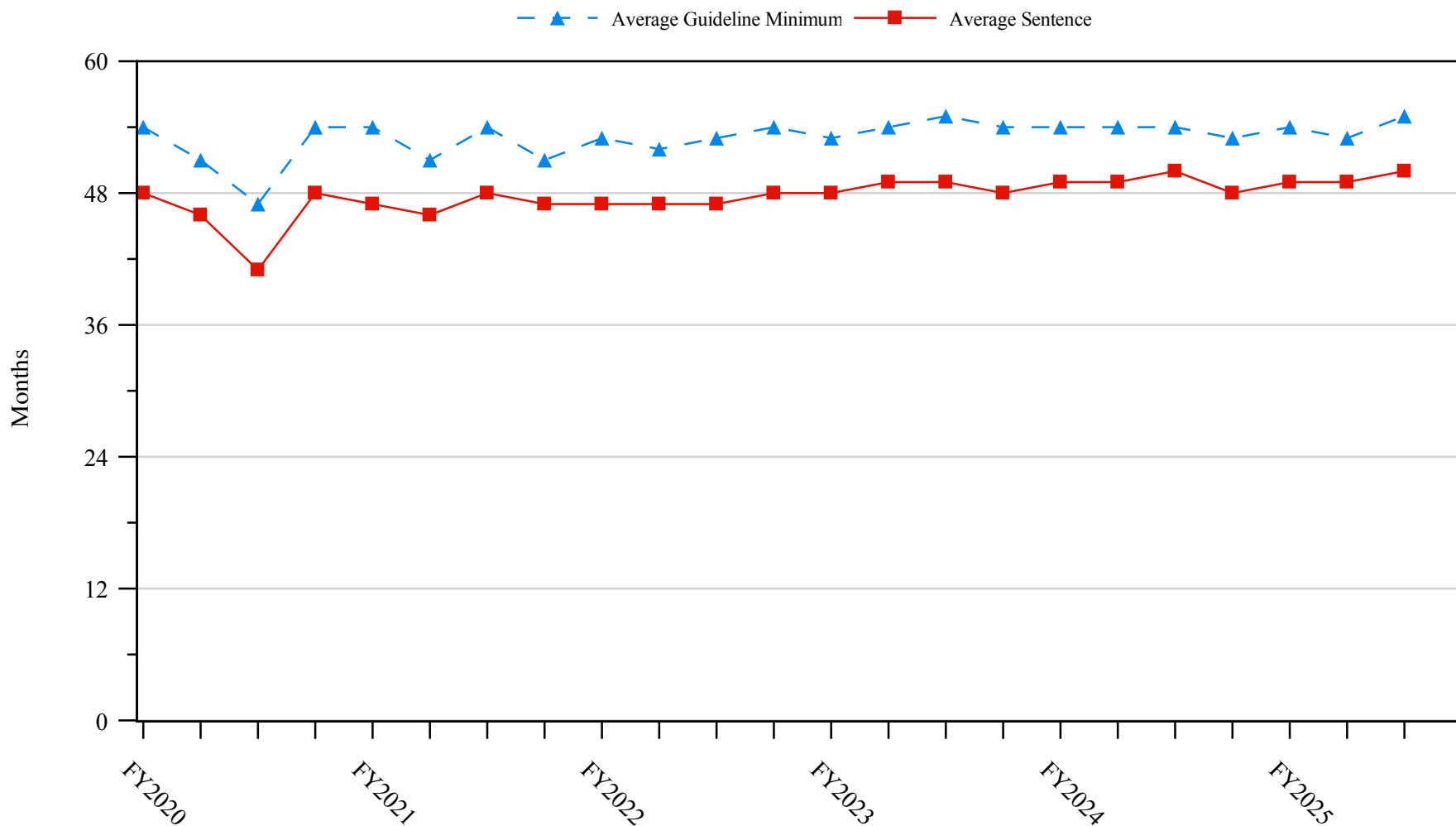


¹ Figure includes only cases with a primary sentencing guideline of USSG §2B1.1 (Larceny, Embezzlement, and Other Forms of Theft; Offenses Involving Stolen Property; Property Damage or Destruction; Fraud and Deceit; Forgery; Offenses Involving Altered or Counterfeit Instruments Other than Counterfeit Bearer Obligations of the United States). Additionally, cases with an amendment year prior to 2001 were excluded from this figure because prior to this time fraud cases were reported separately as USSG §2F1.1. Cases with guideline minimums of life or probation were included in the guideline minimum average computations as 470 months and zero months, respectively. Cases with sentences of 470 months or greater (including life) or probation were included in the sentence average computations as 470 months and zero months, respectively. The information presented in this figure includes conditions of confinement as described in USSG §5C1.1. Guideline minimums account for applicable statutory mandatory penalties. Descriptions of variables used in this figure are provided in Appendix A.

SOURCE: U.S. Sentencing Commission, 2020 - 2024 Datafiles, USSCFY20 - USSCFY24, and Preliminary Data from USSCFY25 (October 1, 2024, through June 30, 2025).

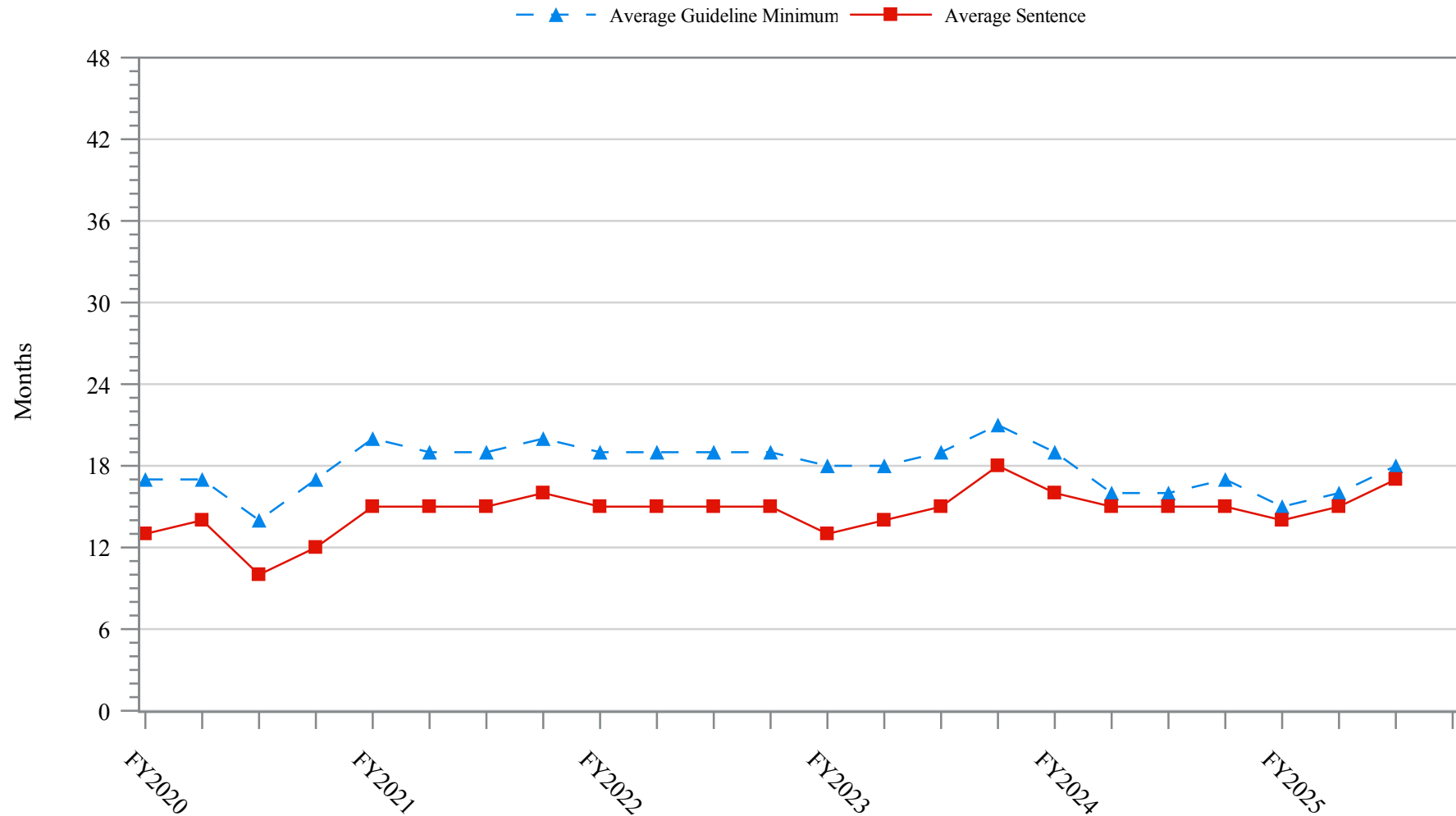
Figure 7

**SENTENCE LENGTH AND GUIDELINE MINIMUM QUARTERLY DATA
FOR INDIVIDUALS SENTENCED UNDER §2K2.1 (UNLAWFUL POSSESSION OF OR TRANSACTION IN FIREARMS)¹
Fiscal Years 2020 - 2024,
3rd Quarter 2025 Preliminary Cumulative Data (October 1, 2024, through June 30, 2025)**



¹ Figure includes only cases with a primary sentencing guideline of USSG §2K2.1 (Unlawful Receipt, Possession, or Transportation of Firearms or Ammunition; Prohibited Transactions Involving Firearms or Ammunition). Cases with guideline minimums of life or probation were included in the guideline minimum average computations as 470 months and zero months, respectively. Cases with sentences of 470 months or greater (including life) or probation were included in the sentence average computations as 470 months and zero months, respectively. The information presented in this figure includes conditions of confinement as described in USSG §5C1.1. Guideline minimums account for applicable statutory mandatory penalties. Descriptions of variables used in this figure are provided in Appendix A.

Figure 8
SENTENCE LENGTH AND GUIDELINE MINIMUM QUARTERLY DATA
FOR INDIVIDUALS SENTENCED UNDER §2L1.1 (ALIEN SMUGGLING)¹
Fiscal Years 2020 - 2024,
3rd Quarter 2025 Preliminary Cumulative Data (October 1, 2024, through June 30, 2025)

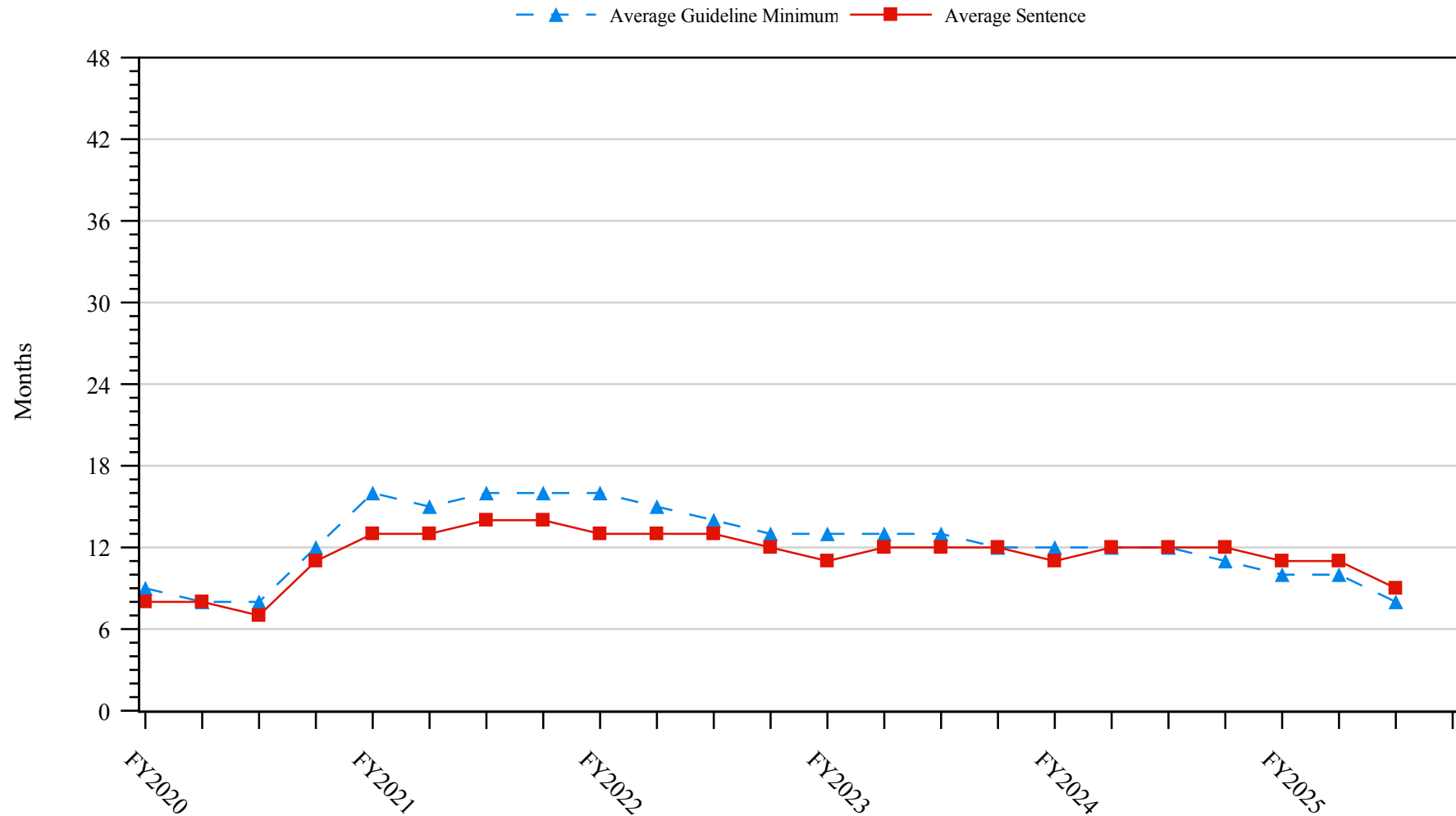


¹ Figure includes only cases with a primary sentencing guideline of USSG §2L1.1 (Smuggling, Transporting, or Harboring an Unlawful Alien). Cases with guideline minimums of life or probation were included in the guideline minimum average computations as 470 months and zero months, respectively. Cases with sentences of 470 months or greater (including life) or probation were included in the sentence average computations as 470 months and zero months, respectively. The information presented in this figure includes conditions of confinement as described in USSG §5C1.1. Guideline minimums account for applicable statutory mandatory penalties. Descriptions of variables used in this figure are provided in Appendix A.

SOURCE: U.S. Sentencing Commission, 2020 - 2024 Datafiles, USSCFY20 - USSCFY24, and Preliminary Data from USSCFY25 (October 1, 2024, through June 30, 2025).

Figure 9

**SENTENCE LENGTH AND GUIDELINE MINIMUM QUARTERLY DATA
FOR INDIVIDUALS SENTENCED UNDER §2L1.2 (UNLAWFUL ENTERING OR REMAINING IN THE UNITED STATES)¹
Fiscal Years 2020 - 2024,
3rd Quarter 2025 Preliminary Cumulative Data (October 1, 2024, through June 30, 2025)**

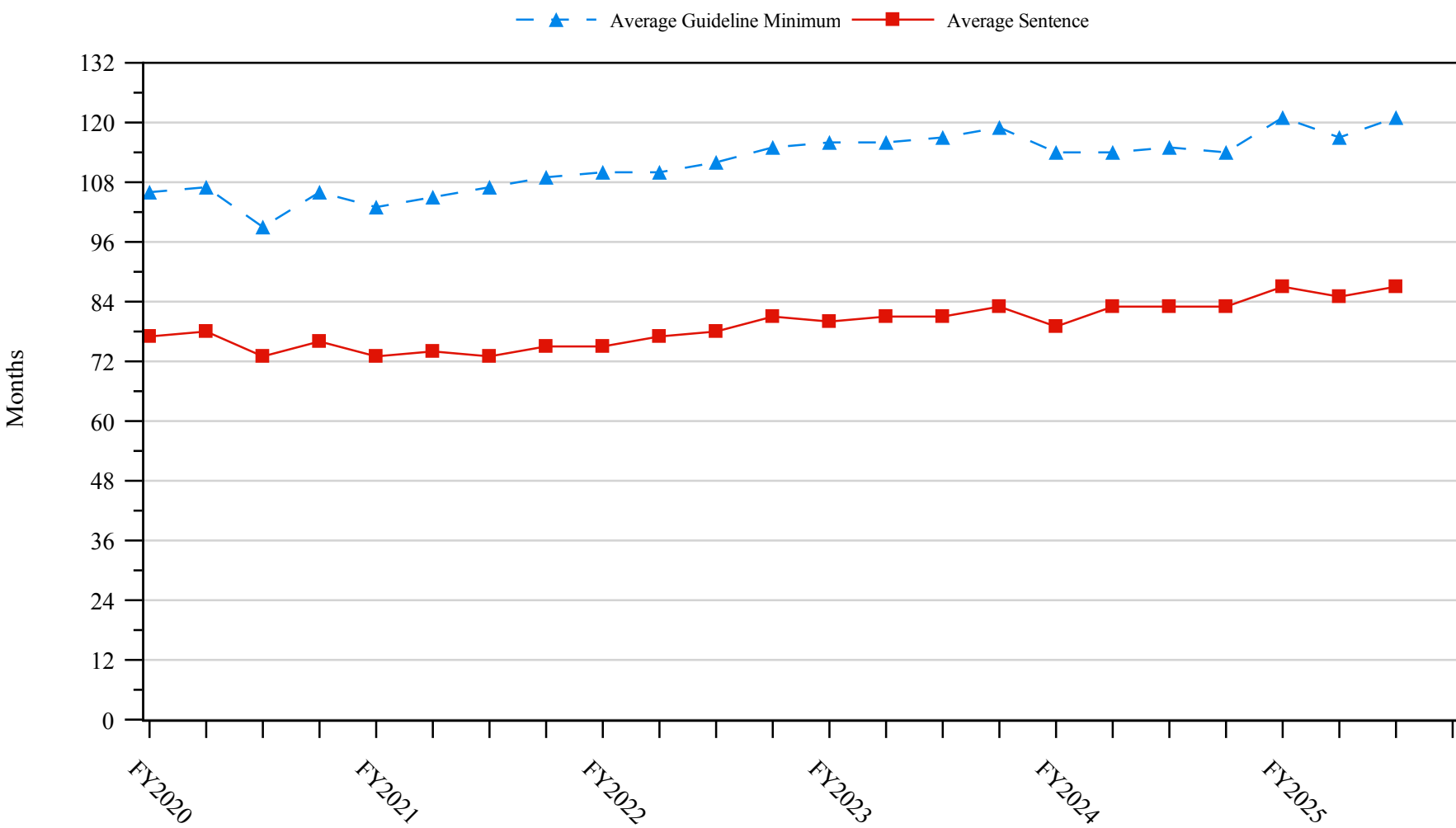


¹ Figure includes only cases with a primary sentencing guideline of USSG §2L1.2 (Unlawful Entering or Remaining in the United States). Cases with guideline minimums of life or probation were included in the guideline minimum average computations as 470 months and zero months, respectively. Cases with sentences of 470 months or greater (including life) or probation were included in the sentence average computations as 470 months and zero months, respectively. The information presented in this figure includes conditions of confinement as described in USSG §5C1.1. Guideline minimums account for applicable statutory mandatory penalties. Descriptions of variables used in this figure are provided in Appendix A.

SOURCE: U.S. Sentencing Commission, 2020 - 2024 Datafiles, USSCFY20 - USSCFY24, and Preliminary Data from USSCFY25 (October 1, 2024, through June 30, 2025).

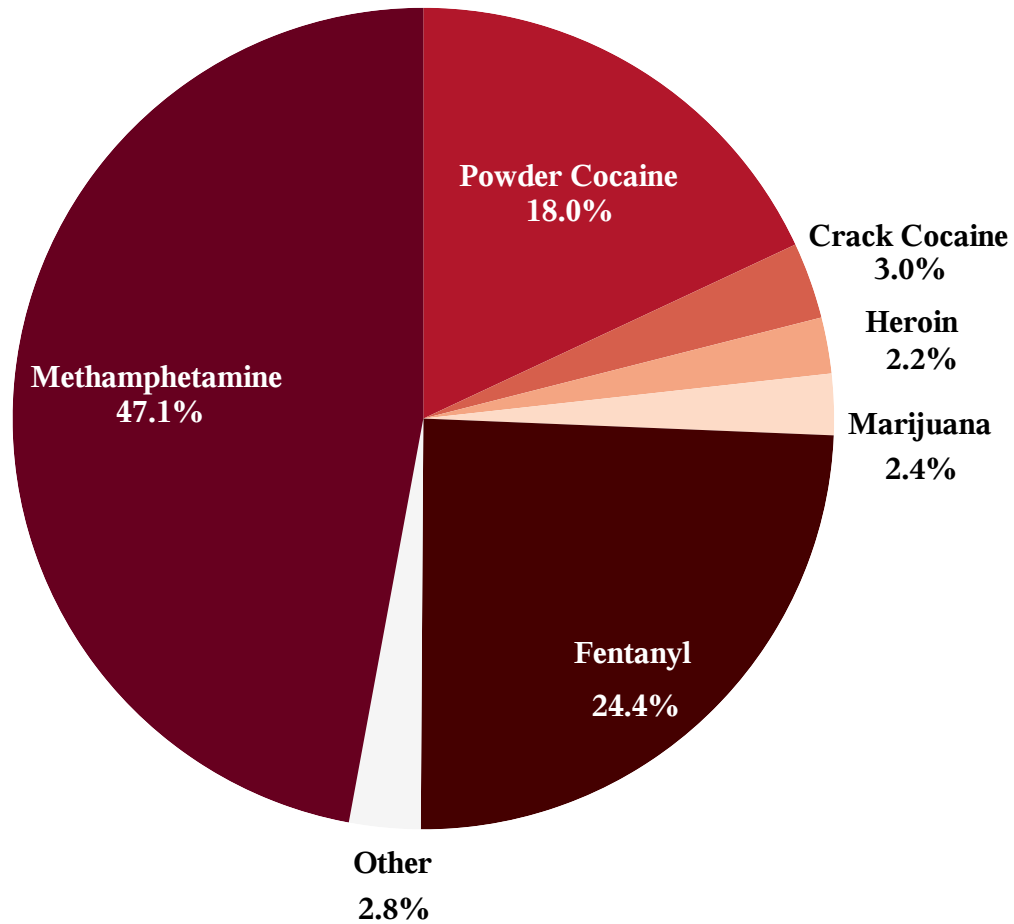
Figure 10

**SENTENCE LENGTH AND GUIDELINE MINIMUM QUARTERLY DATA
FOR INDIVIDUALS SENTENCED UNDER §2D1.1 (UNLAWFUL DRUG TRAFFICKING OR MANUFACTURING)¹
Fiscal Years 2020 - 2024,
3rd Quarter 2025 Preliminary Cumulative Data (October 1, 2024, through June 30, 2025)**



¹ Figure includes only cases with a primary sentencing guideline of USSG §2D1.1 (Unlawful Manufacturing, Importing, Exporting, or Trafficking (Including Possession with Intent to Commit These Offenses); Attempt or Conspiracy). Cases with guideline minimums of life or probation were included in the guideline minimum average computations as 470 months and zero months, respectively. Cases with sentences of 470 months or greater (including life) or probation were included in the sentence average computations as 470 months and zero months, respectively. The information presented in this figure includes conditions of confinement as described in USSG §5C1.1. Guideline minimums account for applicable statutory mandatory penalties. Descriptions of variables used in this figure are provided in Appendix A.

Figure 11
DISTRIBUTION OF PRIMARY DRUG TYPE
IN FEDERAL DRUG CASES^{1,2}
3rd Quarter 2025 Preliminary Cumulative Data
(October 1, 2024, through June 30, 2025)



¹ Of the 47,894 cases, in 12,264 the individual was sentenced under USSG Chapter Two, Part D (Drugs). The 'Fentanyl' category includes both Fentanyl (N-phenyl-N-[1-(2-phenylethyl)-4-piperidinyl] Propanamide) and Fentanyl Analogue. Descriptions of variables used in this figure are provided in Appendix A.

² The 'Other' drug category includes the remaining primary drug types of which the following have more than 50 cases: Oxycodone/Oxycontin (146).

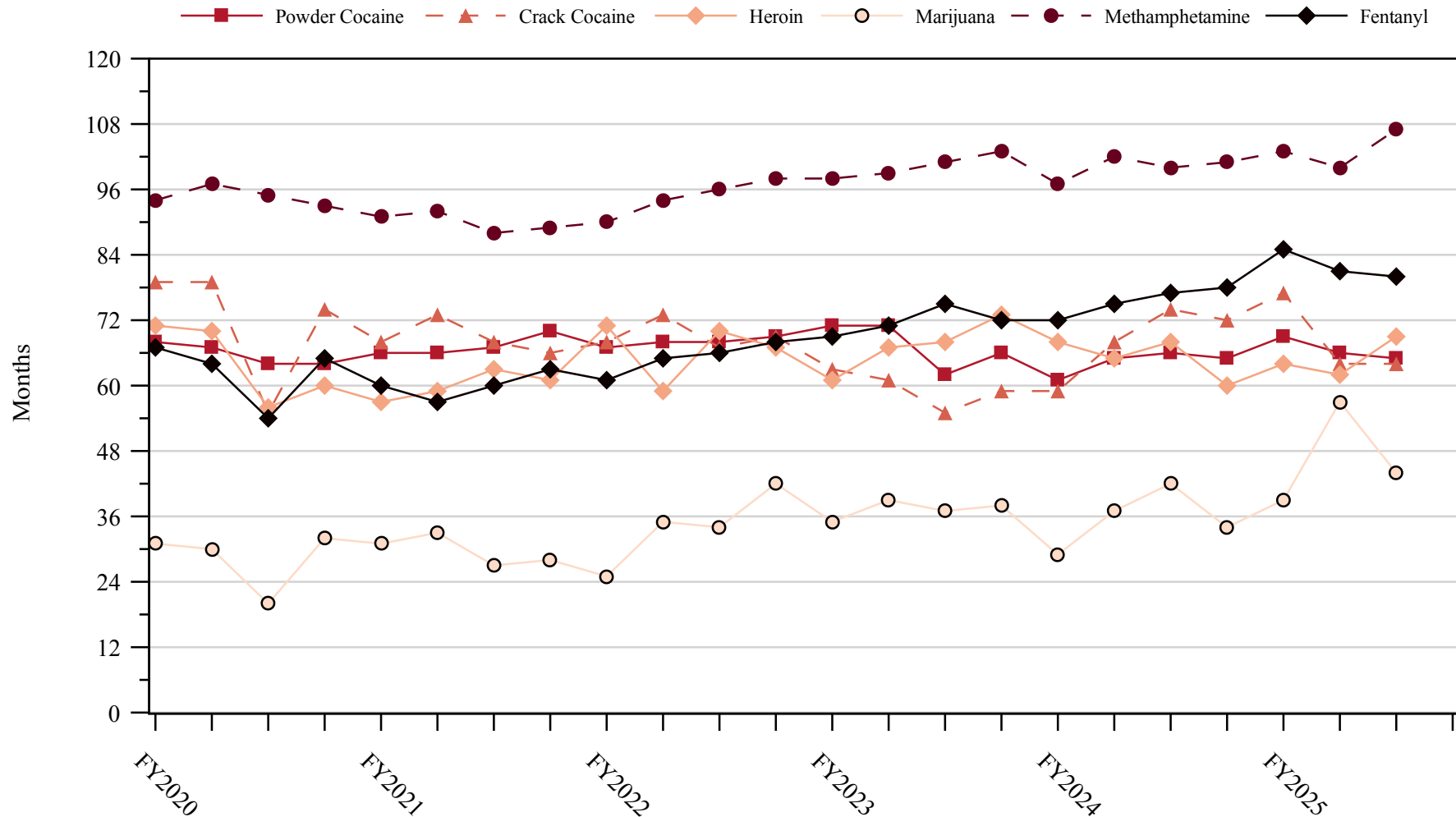
SOURCE: U.S. Sentencing Commission, Preliminary 2025 Datafile, USSCFY25 (October 1, 2024, through June 30, 2025).

Figure 12

SENTENCE LENGTH IN DRUG TRAFFICKING CASES

BY MAJOR DRUG TYPE QUARTERLY DATA¹

Fiscal Years 2020 - 2024,
3rd Quarter 2025 Preliminary Cumulative Data (October 1, 2024, through June 30, 2025)



¹ Only individuals sentenced under §§2D1.1 (Drug Trafficking), 2D1.2 (Protected Locations), 2D1.5 (Continuing Criminal Enterprise), 2D1.6 (Use of a Communication Facility), 2D1.8 (Rent/Manage Drug Establishment), 2D1.10 (Endangering Human Life While Manufacturing), or 2D1.14 (Narco-Terrorism) are depicted in this figure. Sentences of 470 months or greater (including life) and probation were included in the sentence average computations as 470 months and zero months, respectively. The information in this figure includes conditions of confinement as described in USSG §5C1.1. Cases missing drug type or sentencing information were also excluded. Descriptions of variables used in this figure are provided in Appendix A.

SOURCE: U.S. Sentencing Commission, 2020 - 2024 Datafiles, USSCFY20 - USSCFY24, and Preliminary Data from USSCFY25 (October 1, 2024, through June 30, 2025).

Appendix A

Descriptions of Datafiles and Variables

Introduction

The Commission collects and analyzes data on federal sentences to support its various activities. As authorized by Congress, the Commission's numerous research responsibilities include (1) the establishment of a research and development program to serve as a clearinghouse and information center for the collection, preparation, and dissemination of information on federal sentencing practices; (2) the publication of data concerning the sentencing process; (3) the systematic collection and dissemination of information concerning sentences actually imposed and the relationship of such sentences to the factors set forth in section 3553(a) of title 18, United States Code; and (4) the systematic collection and dissemination of information regarding the effectiveness of sentences imposed.¹

The Commission maintains a comprehensive, computerized data collection system which forms the basis for its clearinghouse of federal sentencing information and which contributes to the agency's research mission.

Pursuant to 28 U.S.C. § 994(w), the chief judge of each district is required to ensure that within 30 days of entry of judgment in a criminal case, the sentencing court submits a report of sentence to the Commission that includes (1) the judgment and commitment order; (2) the written statement of reasons; (3) any plea agreement; (4) the indictment or other charging document; (5) the presentence report; and (6) any other information the Commission requests. Information on minor and petty offenses are not reported to the Commission as the sentencing guidelines do not apply in those cases.² Cases in which a sentence of death was imposed also are not available in this dataset for this same reason.³

Standard information on each case is extracted from sentencing documents received and computerized for analysis. Note that for all tables, total percentages may not add up to exactly 100 percent due to rounding.

Variables

The following section describes the variables used in this report.

Attribution Category for Sentences Outside the Range

All categories replicate the list of checkboxes available on the Statement of Reasons form. Not all checkbox categories are available in both the departure section and sentences outside the guideline system section on this form and multiple checkboxes may be indicated in a single case so that totals in a table may exceed the total number of cases. The Commission uses these checkboxes in determining government sponsorship: all cases in which one of the pursuant to a plea agreement boxes is indicated are attributed to the government. Additionally, other types of Statement of Reasons forms may indicate sponsorship in writing, and these attributions are also included in the appropriate category.

¹ 28 U.S.C. §§ 995(a)(12) and (14) – (16).

² See U.S. SENTENCING COMM'N, *Guidelines Manual*, §1B1.9 (Nov. 2023).

³ See 18 U.S.C. §§ 3591-99 for the sentencing procedures that apply in death penalty cases.

Circuit

Information on judicial *Circuit* is generated using the location of the judicial district in which the person was sentenced.

Citizenship Status

Information on the *Citizenship Status* of sentenced individuals is obtained from the Presentence Report. Persons are categorized as one of the following: “U.S. citizen,” “resident alien,” “illegal alien,” “extradited alien,” or “non-U.S. citizen, alien status unknown.” The latter four categories are collapsed into the category of “non-U.S. citizen.”

District

Information on the judicial *District* in which sentencing occurred is obtained from the Judgment and Commitment Order.

Downward Departure

Downward Departure consists of cases in which the sentence imposed was below the applicable guideline range and for which the court cited a reason on Part V of the Statement of Reasons form (Departures Pursuant to the Guidelines Manual). In these cases, the court may also have cited 18 U.S.C. § 3553 or factors or reasons specifically prohibited in the provisions, policy statements, or commentary of the sentencing guidelines as additional reasons. This category includes departures that result from government motions as well as from motions by the parties.

Downward Variance

Downward Variance consists of cases in which the sentence imposed was below the applicable guideline range and for which the court cited a reason on Part VI of the Statement of Reasons form (Court Determination for a Variance). This category includes variances which result from government motions as well as from motions by the defendant.

Extent of Decrease

Extent of Decrease is calculated based on the difference between the sentence length (including any months of alternative confinement as defined in USSG §5C1.1) and the guideline minimum (including any statutory trumps) for below range cases. Life imprisonment sentences and cases where the guideline minimum is zero months or life are excluded from all extent of decrease calculations due to the logical difficulty in calculating a decrease from these values. High values of the sentence are capped at 470 months for analytical purposes.

Extent of Increase

Extent of Increase is calculated based on the difference between the guideline maximum (including any statutory trumps) and the sentence length (including any months of alternative confinement as defined in USSG §5C1.1) for above range cases. Life sentences and cases where the guideline minimum is life are excluded from all extent of increase calculations due to the logical difficulty in calculating an increase from these values. High values of the sentence are capped at 470 months for analytical purposes.

Gender

Gender is obtained from the Presentence Report.

Government Motion (Variance)

Government Motion (Variance) consists of cases in which the sentence imposed was below the applicable guideline range pursuant to a government motion and for which the court cited a reason on Part VI of the Statement of Reasons (SOR) form (Court Determination for a Variance). These cases are determined by a yearly case review by Commission staff of both the reasons for the below range sentence and the coding by Commission staff of any indication of government sponsorship as indicated on the Statement of Reasons for below range cases. The SOR form has specific checkboxes to indicate the origins of the variance, but cases that do not use this form may also indicate in writing the origins of the variance. Additionally, all cases with one or more of the following reasons were classified as being sponsored by the government regardless of whether the SOR indicated sponsorship: pursuant to a plea agreement

(binding, non-binding, or unknown), fast track, savings to the government, early plea, waiver of indictment and/or appeal, other government motion, global disposition, due to stipulations, facilitated early release of a material witness, joint recommendation, and a large number of immigration cases. This category does not include cases with USSG §5K1.1 Substantial Assistance departures or USSG §5K3.1 Early Disposition Program (EDP) departures.

Guideline Sentencing Range

The *Guideline Sentencing Range* is taken from the Statement of Reasons provided by the sentencing court. Alternatively, if the Statement of Reasons is missing, then the information is taken from the Presentence Report.

For tables in this report, unless otherwise indicated, the guideline sentencing range does not take into account applicable statutory restrictions on either the maximum or the minimum of the range; therefore, it may differ from the available range, which does take into account the statutory restrictions.

Non-Government Departure

Non-Government Departure consists of cases in which the sentence imposed was outside the applicable guideline range and for which the court cited a reason on Part V of the Statement of Reasons form (Departures Pursuant to the Guidelines Manual) other than USSG §5K1.1 or USSG §5K3.1, and where the government did not initiate, propose, or stipulate to the sentence.

Non-Government Variance

Non-Government Variance consists of cases in which the sentence imposed was outside the applicable guideline range and for which the court cited a reason on Part VI of the Statement of Reasons form (Court Determination for a Variance), and where the government did not initiate, propose, or stipulate to the sentence.

Other Government Motion (Downward Departure)

Other Government Motion is determined by a yearly case review by Commission staff of both the reasons for the below range sentence and the coding by Commission staff of any indication of government sponsorship as indicated on the Statement of Reasons for below range cases. The SOR form has specific checkboxes to indicate the origins of the departure, but cases that do not use this form may also indicate in writing the origins of the departure. Additionally, all cases with one or more of the following reasons were classified as being sponsored by the government regardless of whether the SOR indicated sponsorship: pursuant to a plea agreement (binding, non-binding, or unknown), fast track, savings to the government, early plea, waiver of indictment and/or appeal, other government motion, global disposition, due to stipulations, facilitated early release of a material witness, joint recommendation, and a large number of immigration cases. This category does not include cases with USSG §5K1.1 Substantial Assistance departures or USSG §5K3.1 Early Disposition Program (EDP) departures.

Primary Drug Type

Information on *Primary Drug Type* is obtained from the Presentence Report, Judgment and Commitment Order, or Plea Agreement. It is recorded only if at least one of the statutes of conviction recorded by the Commission is an offense under title 21 of the United States Code or an offense under another title when the underlying conduct involves a controlled substance. Information about type of drug in the text and tables is derived from the primary drug type (i.e., the type that produces the highest base offense level).

The category *Fentanyl* includes cases in which the drug involved is Fentanyl (N-phenyl-N-[1-(2-phenylethyl)-4-piperidinyl] Propanamide) and cases in which the court determined the substance involved to be a Fentanyl analogue, as defined in the *Guidelines Manual*. The category *Marijuana* includes Hashish and Hashish oil. The category *Methamphetamine* includes pure (actual) methamphetamine, “Ice,” methamphetamine mixture, and methamphetamine precursors sentenced under any drug trafficking guideline other than USSG §2D1.11 (for example ephedrine and pseudoephedrine). All drug types not listed separately in this report are collapsed into the “Other” drug category.

Primary Guideline

When more than one sentencing guideline is applied in a case, the *Primary Guideline* is the guideline that has the highest adjusted offense level (this includes the Base Offense Level, all applicable Specific Offense Characteristics, and Chapter Three Adjustments prior to the application of Multiple Count Units).

Race

Information on *Race* is obtained from the Presentence Report in separate categories of race and ethnicity (*White, Black, Native American or Alaskan Native, Asian or Pacific Islander, Multiracial*, and “*Other*”). Ethnicity data indicates whether a sentenced individual is of Hispanic origin. For purposes of this report, individuals whose ethnic background is designated as Hispanic are represented as Hispanic in all tables regardless of racial background. The *Other* race category includes individuals of Native American or Alaskan Native, Asian or Pacific Islander, Multiracial, and “Other” origin.

Sentence Imposed or Sentence Length

Sentence Imposed or *Sentence Length* reports the mean and median terms of the sentence imposed in months. It also includes any time served amounts and imprisonment under USSG §5G1.3. This information is obtained from the Judgment and Commitment Order. Mean and median sentence lengths are rounded to the nearest month. Probation sentences are included as zero months. Any portion of a sentence that is an alternative confinement as described in USSG §5C1.1 is included.

Cases in which a sentence is imposed, but where the length is indeterminable, are excluded. When sentences are expressed as “time served” on the Judgment and Commitment Order, Commission staff uses the dates in federal custody to determine the length of time served when an individual has been in custody the entire time. If the individual has been in and out of custody, or the start date is unclear/missing, then the Commission assigns a value of one day as a minimal time served amount for these cases. In cases where the court imposes a sentence of life imprisonment, a numeric value is necessary to include these cases in any sentence length analysis. Accordingly, life sentences are reported as 470 months, a length consistent with the average life expectancy of individuals sentenced for federal offenses given the average age of those person. Sentences of greater than 470 months are also reported as 470 months. The footnote in the relevant tables and figures indicates when this occurs.

Sentenced Individuals

Each *Sentenced Individual* or case, as recorded by the Commission, involves a single sentencing event for a single person. Multiple counts of conviction, including counts of conviction charged on multiple indictments, are considered a single sentencing event if a single sentence was imposed for the counts on the same day at the same time by the same judge. An individual may account for more than one case if the person was involved in more than one sentencing event during the fiscal year. Data on co-defendants in the same sentencing will appear as separate cases.

Sentence Type

Using sentencing information obtained from the Judgment and Commitment Order, the *Total Receiving Imprisonment* category includes the number of individuals sentenced (and percent of *Total Cases*) who received a commitment to the Bureau of Prisons. This category is the sum of cases in *Prison Only* and the *Prison and Alternatives* categories.

The *Total Receiving Probation* category includes the number of individuals sentenced (and the percent of *Total Cases*) who received a term of probation with or without a condition of community confinement, intermittent confinement, or home detention. This category is the sum of *Probation Only* and *Probation and Alternatives* categories.

The *Prison Only* category includes individuals sentenced to a term of imprisonment only, with no additional conditions of community confinement, home detention or intermittent confinement.

The *Prison and Alternatives* category includes all cases in which individuals received prison and conditions of alternative confinement as defined in USSG §5C1.1. This category includes, but is not

limited to, Zone A, Zone B, or Zone C cases receiving prison with additional conditions of a term of community confinement, home detention, or intermittent confinement.

The *Probation Only* category includes the number of individuals who received a term of probation without a condition of community confinement, intermittent confinement, or home detention.

The *Probation and Alternatives* category includes the number of individuals who received a term of probation with a condition of community confinement, intermittent confinement, or home detention.

The *Fine Only* category includes the number of individuals who received no prison, no probation, and no time of alternative confinement as defined in USSG §5C1.1. Most of these sentenced individuals received a fine and/or a special assessment.

Sentences Under the Guidelines Manual

This category includes individuals whose sentences are determined to be either within the guideline range or outside the guideline range and for which the court cited a reason on Part V of the Statement of Reasons form (Departures Pursuant to the Guidelines Manual). In these cases, the court may also have cited 18 U.S.C. § 3553 or factors or reasons specifically prohibited in the provisions, policy statements, or commentary of the sentencing guidelines as additional reasons. This category includes departures which result from government motions as well as from motions by the sentenced individual.

Type of Crime

Information on *Type of Crime* is obtained from the primary guideline detailed in the Presentence Report. If the primary guideline is an “attempt/conspiracy” guideline such as USSG §2X1.1, then the underlying guideline is used to determine the type of crime category. If there is no primary guideline provided, then information about the type of crime category is obtained from the statutes of conviction listed on the Judgment and Commitment Order. When the “type of crime” for the case is determined from the statutes of conviction, the offense applicable to the count of conviction with the highest statutory maximum becomes the “type of crime.” If two or more counts are found to have the same statutory maximum, the “type of crime” is selected according to which count of conviction has the highest statutory minimum. Finally, in the event of a small number of cases still tied, the “type of crime” that best represented the nature of the criminal behavior is chosen. For convenience in analysis, a summary variable describing “type of crime” is derived. This is generated by grouping similar primary offenses into a smaller set of categories. Note that the crime categories differ between the individual and organizational datafiles. Listed below are the type of crimes that are grouped into each of the crime categories used in the individual datafile tables for this report:

Administration of Justice includes obstructing or impeding officers, contempt, obstruction of justice, perjury or subornation of perjury, bribery of a witness, impersonation, failure to appear by defendant, failure to appear by material witness, commission of offense while on release, payment of witness, and misprision of a felony. This category includes persons sentenced under §§2A2.4, 2J1.1, 2J1.2, 2J1.3, 2J1.4, 2J1.6, 2J1.9, and 2X4.1 of the *Guidelines Manual*.

Antitrust includes bid-rigging, price-fixing, and market allocation agreement. This category includes individuals sentenced under §2R1.1 of the *Guidelines Manual*.

Arson includes property damage by explosives and use of fire or explosives to commit a federal felony. This category includes persons sentenced under §§2K1.4 and 2K1.7 (deleted) of the *Guidelines Manual*.

Assault includes attempt to commit murder, assault with intent to murder, threatening communication, aggravated assault, minor assault, and conspiracy that includes assault with attempt to murder. This category includes persons sentenced under §§2A2.1, 2A2.2, and 2A2.3 of the *Guidelines Manual*.

Bribery/Corruption includes offenses involving public officials and violations of federal election campaign laws, bribe involving officials, bribery — bank loan/commercial, loan or gratuity to bank examiner, *etc.*, gratuity involving officials, bribe or gratuity affecting employee plan, conflict of interest, payment or receipt of unauthorized compensation, and making, receiving, or failing to report a contribution, donation, or expenditure in violation of the Federal Election Campaign Act. This category includes persons sentenced under §§2B4.1, 2C1.1, 2C1.2, 2C1.3, 2C1.4 (deleted), 2C1.5, 2C1.6 (deleted), 2C1.7 (deleted), and 2C1.8 of the *Guidelines Manual*.

Burglary/Trespass includes burglary of a residence and burglary of a structure other than a residence, post office burglary, burglary of DEA premises (pharmacy), bank burglary, and trespass. This category includes persons sentenced under §§2B2.1, 2B2.2 (deleted), and 2B2.3 of the *Guidelines Manual*.

Child Pornography includes the receipt or possession of materials involving the sexual exploitation of minors. This category includes persons sentenced under §§2G2.2 and 2G2.4 (deleted) of the *Guidelines Manual*.

Commercialized Vice includes gambling, animal fighting, and prostitution offenses. This category includes persons sentenced under §2G1.1 where the court did NOT apply a Base Offense Level of 34, and all individuals sentenced under §§2E3.1, 2E3.2 (deleted), and 2E3.3 (deleted) of the *Guidelines Manual*.

Drug Possession includes simple possession of all drug types. This category includes persons sentenced under §2D2.1 of the *Guidelines Manual*.

Drug Trafficking includes drug distribution/manufacture — conspiracy, continuing criminal enterprise, drug distribution — employee under 21, drug distribution near school, drug import/export, drug distribution to person under 21, establish/rent drug operation, endangering human life while manufacturing, and narco-terrorism. This category includes persons sentenced under §§2D1.1, 2D1.2, 2D1.5, 2D1.6, 2D1.8, 2D1.10, and 2D1.14 of the *Guidelines Manual*.

Environmental includes waste discharge; specially protected fish, wildlife, and plants; recordkeeping; tampering; and falsification; tampering with a public water system; mishandling of environmental pollutants; and hazardous devices on federal lands. This category includes persons sentenced under §§2K3.1 (deleted), 2Q1.1, 2Q1.2, 2Q1.3, 2Q1.4, 2Q1.5 (deleted), 2Q1.6, 2Q2.1, and 2Q2.2 (deleted) of the *Guidelines Manual*.

Extortion/Racketeering includes extortion by force, or threat of injury or serious damage, extortionate extension of credit, blackmail, Hobbs Act extortion, travel in aid of racketeering, crime relating to racketeering, and violent crimes in aid of racketeering, unlawful conduct relating to contraband cigarettes, and labor racketeering. This category includes persons sentenced under §§2B3.2, 2B3.3, 2E1.1, 2E1.2, 2E1.3, 2E1.4, 2E1.5 (deleted), 2E2.1, 2E4.1, 2E5.1, 2E5.2 (deleted), 2E5.3, 2E5.4 (deleted), 2E5.5 (deleted), and 2E5.6 (deleted) of the *Guidelines Manual*.

Firearms includes unlawful receipt/possession/transportation of firearms, ammunition, or explosive material; prohibited transactions involving firearms or ammunition; possession of guns/explosives on aircraft; unlawful trafficking, *etc.*, in explosives; possession of guns/explosives in federal facility/schools; use of fire or explosives to commit felony; use of firearms or ammunition during crime; improper storage of explosive materials; and failure to report theft of explosive materials. This category includes persons sentenced under §§2K1.1, 2K1.2, 2K1.3, 2K1.5, 2K1.6, 2K2.1, 2K2.2, 2K2.3, 2K2.4, 2K2.5, 2K2.6, and 2K3.2 of the *Guidelines Manual*.

Food and Drug includes tampering with risk of death or injury, providing false information or tampering with products, tampering to injure business, odometer laws and regulations, and violation of regulations involving food, drugs, etc. This category includes persons sentenced under §§2N1.1, 2N1.2, 2N1.3, 2N2.1, and 2N3.1 of the *Guidelines Manual*.

Forgery/Counterfeiting/Copyright includes counterfeit bearer obligations and forgery/counterfeit (non-bearer obligations) as well as criminal infringement of copyright or trademark. This category includes persons sentenced under §§2B5.1, 2B5.2 (deleted), 2B5.3, and 2B5.4 (deleted) of the *Guidelines Manual*.

Fraud/Theft/Embezzlement includes fraud and deceit, embezzlement — property, embezzlement from labor unions, embezzlement — mail/post office, embezzlement from benefit plans, bank embezzlement, bank larceny, theft from benefit plans, other theft — mail/post office, receipt/possession of stolen property, theft from labor union, theft or damage to cultural heritage resources, insider trading, and aggravated identity theft. This category includes persons sentenced under §§2B1.1, 2B1.2 (deleted), 2B1.3 (deleted), 2B1.4, 2B1.5, 2B1.6, 2F1.1 (deleted), and 2F1.2 (deleted) of the *Guidelines Manual*.

Immigration includes trafficking in U.S. passports, trafficking in entry documents, failure to surrender naturalization certificate, fraudulently acquiring U.S. passports, smuggling, transporting, or harboring an unlawful alien, fraudulently acquiring entry documents, and unlawfully entering or remaining in the U.S. This category includes persons sentenced under §§2L1.1, 2L1.2, 2L1.3 (deleted), 2L2.1, 2L2.2, 2L2.3 (deleted), 2L2.4 (deleted), and 2L2.5 of the *Guidelines Manual*.

Individual Rights includes interference with rights under color of law; force or threats to deny benefits or rights; obstructing an election or registration; manufacture, etc. — eavesdropping device; other deprivations/discrimination; obstructing correspondence; peonage, servitude, and slave trade; intercept communication or eavesdropping; and conspiracy to deprive individual of civil rights. This category includes persons sentenced under §§2H1.1, 2H1.2 (deleted), 2H1.3 (deleted), 2H1.4 (deleted), 2H1.5 (deleted), 2H2.1, 2H3.1, 2H3.2, 2H3.3, 2H4.1, and 2H4.2 of the *Guidelines Manual*.

Kidnapping includes hostage and ransom taking, abduction, unlawful restraint, and aircraft piracy. This category includes persons sentenced under §§2A4.1, 2A4.2, and 2A5.1 of the *Guidelines Manual*.

Manslaughter includes both involuntary and voluntary manslaughter. This category includes persons sentenced under §§2A1.3 and 2A1.4 of the *Guidelines Manual*.

Money Laundering includes laundering of monetary instruments, monetary transaction from unlawful activity, failure to file currency report, and failure to report monetary transactions. This category includes persons sentenced under §§2S1.1, 2S1.2 (deleted), 2S1.3, and 2S1.4 (deleted) of the *Guidelines Manual*.

Murder includes first degree murder, second degree murder, and conspiracy or solicitation to commit murder. This category includes persons sentenced under §§2A1.1, 2A1.2, and 2A1.5 of the *Guidelines Manual*.

National Defense includes treason, sabotage, espionage, evasion of military service, prohibited financial transactions and exports, providing material support to designated foreign terrorist organizations, nuclear, biological, and chemical weapons, and weapons of mass destruction. This category includes persons sentenced under §§2M1.1, 2M2.1, 2M2.2 (deleted), 2M2.3, 2M2.4 (deleted), 2M3.1, 2M3.2, 2M3.3, 2M3.4, 2M3.5, 2M3.6

(deleted), 2M3.7 (deleted), 2M3.8 (deleted), 2M3.9, 2M4.1, 2M5.1, 2M5.2, 2M5.3, 2M6.1, and 2M6.2 of the *Guidelines Manual*.

Obscenity/Other Sex Offenses includes failure to register as a sex offender, recordkeeping offenses involving production of sexually explicit material, and importing, mailing, transporting, or broadcasting obscene material. This category includes persons sentenced under §§2A3.5, 2A3.6, 2G2.5, 2G3.1, and 2G3.2 of the *Guidelines Manual*.

Prison Offenses includes contraband in prisons, riots in federal facilities, and escape. This category includes persons sentenced under §§2P1.1, 2P1.2, 2P1.3, and 2P1.4 (deleted) of the *Guidelines Manual*.

Robbery includes bank robbery, Hobbs Act robbery, post office robbery, other robbery, and carjacking. This category includes persons sentenced under §2B3.1 of the *Guidelines Manual*.

Sexual Abuse includes criminal sexual abuse, sexual abuse of a minor, sexual abuse of a ward, abusive sexual contact, transportation of minor for sex, sex trafficking of children, sex trafficking of adults by force, fraud or coercion, child pornography production, and child exploitation enterprises. This category includes persons sentenced under §2G1.1 who received a Base Offense Level of 34, and all individuals sentenced under §§2A3.1, 2A3.2, 2A3.3, 2A3.4, 2G1.2 (deleted), 2G1.3, 2G2.1, 2G2.3, and 2G2.6 of the *Guidelines Manual*.

Stalking/Harassing includes threatening or harassing communications, hoaxes, false liens, stalking, and domestic violence. This category includes persons sentenced under §§2A6.1 and 2A6.2 of the *Guidelines Manual*.

Tax includes non-payment of taxes, conspiracy to avoid taxes, offenses relating to withholding statements, aiding or advising tax fraud, failing to collect or truthfully account for and pay over taxes, failing to deposit collected taxes in required accounts after notice, alcohol and tobacco tax offenses, and customs taxes. This category includes persons sentenced under §§2T1.1, 2T1.2 (deleted), 2T1.3 (deleted), 2T1.4, 2T1.5 (deleted), 2T1.6, 2T1.7, 2T1.8, 2T1.9, 2T2.1, 2T2.2, 2T3.1, and 2T3.2 (deleted) of the *Guidelines Manual*.

Other Miscellaneous Offenses includes interference with a flight crew, unlawful sale, transportation, possession, manufacturing, or importation of drug paraphernalia, distributing, importing, or exporting listed chemicals, evading reporting or recordkeeping requirements involving chemicals, acquiring a controlled substance by fraud or forgery, border tunnels and subterranean passages, and all other felony and miscellaneous offenses not previously listed in any of the other categories or covered by specific guidelines. This category includes persons sentenced under §§2A5.2, 2D1.7, 2D1.11, 2D1.12, 2D1.13, 2D2.2, 2D2.3, 2D3.1, 2X5.1, 2X5.2, and 2X7.1 of the *Guidelines Manual*. In addition, this category includes persons sentenced under §§2X1.1, 2X2.1, 2X3.1, 2X6.1, and 2X7.2 of the *Guidelines Manual* if no underlying guideline was provided.

Upward Departure

Upward Departure consists of cases in which the sentence imposed was above the applicable guideline range and for which the court cited a reason on Part V of the Statement of Reasons form (Departures Pursuant to the Guidelines Manual). In these cases, the court may also have cited 18 U.S.C. § 3553 or factors or reasons specifically prohibited in the provisions, policy statements, or commentary of the sentencing guidelines as additional reasons. This category includes departures which result from government motions as well as from motions by the parties.

Upward Variance

Upward Variance consists of cases in which the sentence imposed was above the applicable guideline range and for which the court cited a reason on Part VI of the Statement of Reasons form (Court Determination for a Variance). This category includes variances which result from government motions as well as from motions by the defendant.

Within Guideline Range

Cases are classified in this category when the sentence is within both the guideline range and within the statutory minimum and maximum. The sentence must meet minimum zone requirements as well. In rare instances when a very small departure or variance is granted, but the sentence is still within the original guideline range, the sentence is reported as within range.

Year

Information on *Year* is obtained from the Judgment and Commitment Order. Unless otherwise indicated, the sentencing year is defined as the fiscal year in which the individual was sentenced.