

# United States Sentencing Commission Quarterly Data Report



**2nd Quarter Release  
Preliminary Fiscal Year 2026 Data  
Through March 31, 2026**

## Introduction

As part of its ongoing mission, the United States Sentencing Commission provides Congress, the judiciary, the executive branch, and the general public with data extracted and analyzed from sentencing documents submitted to the Commission by the courts.<sup>1</sup> Data is reported on an annual basis in the Commission’s *Annual Report* and *Sourcebook of Federal Sentencing Statistics*.<sup>2</sup> Additional information on Commission data can be found through the Commission’s “Interactive Data Analyzer” at <https://ida.ussc.gov>.

After the Supreme Court’s decision in *United States v. Booker* in 2005, the Commission began reporting data on a quarterly basis in order to provide real-time data concerning the sentences imposed in the federal courts. The types of data reported increased over time to accommodate various requests for additional information. These reports were eventually standardized in a format that was largely unchanged through fiscal year 2015. In fiscal year 2016, the Commission revised the format for its quarterly reports, to include information not previously reported on a quarterly basis, and to make it easier to understand the data that was presented.

In 2018, the Commission again updated the way it presented quarterly data to reflect methodological changes in the way the Commission analyzes its data. Principal among them was the way in which cases are assigned to a “type of crime” (previously called offense type), which are established by the guideline (or guidelines) that the court applied in determining the sentence. Additionally, sentences were capped at 470 months for all analyses, consistent with the Commission’s long-standing practice of assigning a value of 470 months to any life imprisonment sentence.

Beginning in fiscal year 2026, the Commission is again updating the way it presents data. This report reflects changes made to the sentencing guidelines by Amendment 836,<sup>3</sup> which eliminated departures and created a new adjustment for participation in an Early Disposition Program.<sup>4</sup> Several tables and figures in this report are affected by these changes. For example, tables that reported information solely for departures have been removed.

Additionally, all analyses reporting data on the position of the sentence imposed relative to the guideline range have been revised. For these analyses, cases are now assigned to one of four broad categories: Within Guideline Range, Above Guideline Range, Substantial Assistance, and Below Guideline Range. Cases in which the court applied an adjustment at §3F1.1 for

---

<sup>1</sup> In each felony or Class A misdemeanor case sentenced in federal court, sentencing courts are required to submit the following documents to the Commission: the Judgment and Commitment Order, the Statement of Reasons, the plea agreement (if applicable), the indictment or other charging document, and the presentence report. *See* 28 U.S.C. § 994(w).

<sup>2</sup> Electronic copies of the *Annual Report* and *Sourcebook of Federal Sentencing Statistics* for fiscal years 1995 through 2025 are available at the Commission’s website, [www.ussc.gov](http://www.ussc.gov).

<sup>3</sup> Amendment 836 became effective on November 1, 2025.

<sup>4</sup> Previously EDP participation was recognized in a departure provision. *See generally Guidelines Manual* §5K3.1 (2024 ed.).

participation in an Early Disposition Program will be reported in the broad category corresponding to the sentence imposed in the case.

Table 8 provides additional detail regarding the position of the sentence imposed relative to the guideline range. On that table, the number of cases in which the EDP adjustment was applied is reported in a subcategory of each of the four broad categories. For example, Within Guideline Range cases are reported in two subcategories: those in which the court did not apply the adjustment at §3F1.1 and those in which it did apply the adjustment. Cases involving substantial assistance are reported in three subcategories: those in which the court cited only the defendant's substantial assistance as the reason for the sentence, those in which the court also applied the EDP adjustment at §3F1.1, and those in which the court cited some additional reason for the sentence. Below Guideline Range cases also are reported in three subcategories: those in which the court applied the EDP adjustment at §3F1.1, those in which the government requested a sentence below the guideline range (for a reason other than the defendant's substantial assistance), and those in which the government did not request a sentence below the guideline range. Tables 9 through 11 report information using the four broad categories, but report Below Guideline Range cases by its three subcategories.

Finally, Table 12 has been revised to report new data regarding the plea status for all cases. Unlike prior years, data on the plea status is now available and is presented for all cases, including Within Guideline Range cases.

The data in this report is preliminary and subject to change as the Commission collects, analyzes, and reports on data from additional cases throughout the fiscal year. When data for each new quarter is made available, the Commission will update the previous preliminary quarterly totals in the most recent release until the release of the final fiscal year data in the Commission's *Sourcebook*.<sup>5</sup>

---

<sup>5</sup> Data for previous quarters may change for many reasons. For example, the courts have up to 30 days after the entry of judgment in a case to submit court documents to the Commission. The Commission both extracts information from the documents and screens cases through the quality control procedures and does not include any case in a data release unless it has been fully entered and reviewed.

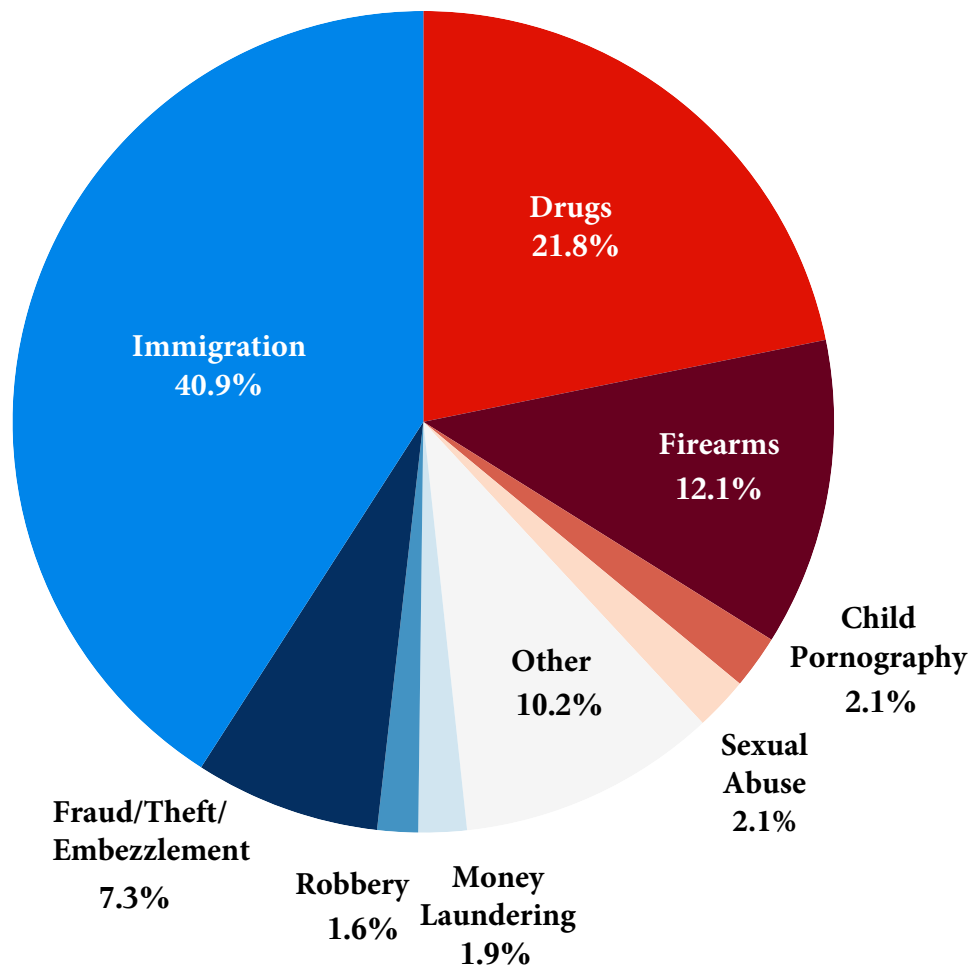
# CONTENTS

Figure 1: Sentenced Individuals by Type of Crime .....	1
Table 1: Sentenced Individuals by Type of Crime .....	2
Table 2: Sentenced Individuals in Each Circuit and District.....	3
Figure 2: Number of Sentenced Individuals by Selected Primary Guidelines .....	5
Table 3: Race of Sentenced Individuals by Type of Crime .....	6
Table 4: Gender of Sentenced Individuals by Type of Crime .....	7
Table 5: Citizenship of Sentenced Individuals by Type of Crime.....	8
Table 6: Sentence Length by Type of Crime .....	9
Table 7: Sentence Type by Type of Crime .....	10
Table 8: Sentence Imposed Relative to the Guideline Range.....	11
Table 9: Sentence Imposed Relative to the Guideline Range In Each Circuit and District.....	12
Table 10: Sentence Imposed Relative to the Guideline Range by Type of Crime .....	15
Table 11: Sentence Imposed Relative to the Guideline Range by Primary Sentencing Guideline .....	16
Table 12: Type of Plea by Sentence Imposed Relative to the Guideline Range .....	18
Table 13: Extent of Above Guideline Range by Type of Crime .....	19
Table 14: Extent of §5K1.1 Substantial Assistance by Type of Crime .....	20
Table 15: Extent of EDP Below Range by Type of Crime.....	21
Table 16: Extent of Government Below Range by Type of Crime .....	22
Table 17: Extent of Non-Government Below Range by Type of Crime .....	23
Figure 3: Sentence Length and Guideline Minimum Quarterly Data for Sentenced Individuals .....	24

Figure 4: Sentence Length and Guideline Minimum Quarterly Data for Individuals Sentenced Under §2B1.1 .....	25
Figure 5: Sentence Length and Guideline Minimum Quarterly Data for Individuals Sentenced Under §2K2.1 .....	26
Figure 6: Sentence Length and Guideline Minimum Quarterly Data for Individuals Sentenced Under §2L1.1 .....	27
Figure 7: Sentence Length and Guideline Minimum Quarterly Data for Individuals Sentenced Under §2L1.2 .....	28
Figure 8: Sentence Length and Guideline Minimum Quarterly Data for Individuals Sentenced Under §2D1.1 .....	29
Figure 9: Distribution of Primary Drug Type in Federal Drug Cases .....	30
Figure 10: Sentence Length Quarterly Data in Drug Trafficking Cases by Major Drug Type .....	31
<b><i>Appendix</i></b>	
Appendix A: Descriptions of Datafiles and Variables.....	A-1

Figure 1

**SENTENCED INDIVIDUALS BY TYPE OF CRIME<sup>1</sup>**  
**2nd Quarter 2026 Preliminary Cumulative Data**  
**(October 1, 2025, through March 31, 2026)**



<sup>1</sup> This figure includes the 32,586 cases reported to the Commission. The Drugs category includes trafficking and simple possession. Descriptions of variables used in this figure are provided in Appendix A.

SOURCE: U.S. Sentencing Commission, Preliminary 2026 Datafile, USSCFY26 (October 1, 2025, through March 31, 2026).

**Table 1****SENTENCED INDIVIDUALS BY TYPE OF CRIME<sup>1</sup>****2nd Quarter 2026 Preliminary Cumulative Data (October 1, 2025, through March 31, 2026)**

<b>TYPE OF CRIME</b>	<b>N</b>	<b>%</b>
<b>TOTAL</b>	<b>32,586</b>	<b>100.0</b>
Administration of Justice	313	1.0
Antitrust	4	0.0
Arson	29	0.1
Assault	409	1.3
Bribery/Corruption	136	0.4
Burglary/Trespass	22	0.1
Child Pornography	699	2.1
Commercialized Vice	45	0.1
Drug Possession	44	0.1
Drug Trafficking	7,071	21.7
Environmental	69	0.2
Extortion/Racketeering	35	0.1
Firearms	3,935	12.1
Food and Drug	17	0.1
Forgery/Counter/Copyright	23	0.1
Fraud/Theft/Embezzlement	2,375	7.3
Immigration	13,314	40.9
Individual Rights	41	0.1
Kidnapping	56	0.2
Manslaughter	43	0.1
Money Laundering	623	1.9
Murder	153	0.5
National Defense	336	1.0
Obscenity/Other Sex Offenses	180	0.6
Prison Offenses	170	0.5
Robbery	520	1.6
Sexual Abuse	692	2.1
Stalking/Harassing	152	0.5
Tax	182	0.6
Other	898	2.8

<sup>1</sup> Descriptions of variables used in this table are provided in Appendix A.

SOURCE: U.S. Sentencing Commission, Preliminary 2026 Datafile, USSCFY26 (October 1, 2025, through March 31, 2026).

Table 2

**SENTENCED INDIVIDUALS IN EACH CIRCUIT AND DISTRICT<sup>1</sup>**  
**2nd Quarter 2026 Preliminary Cumulative Data**  
**(October 1, 2025, through March 31, 2026)**

CIRCUIT			CIRCUIT		
District	N	%	District	N	%
<b>TOTAL</b>	<b>32,586</b>	<b>100.0</b>			
<b>D.C. CIRCUIT</b>	<b>152</b>	<b>0.5</b>	<b>FIFTH CIRCUIT</b>	<b>11,119</b>	<b>34.1</b>
District of Columbia	152	0.5	Louisiana		
<b>FIRST CIRCUIT</b>	<b>854</b>	<b>2.6</b>	Eastern	171	0.5
Maine	51	0.2	Middle	63	0.2
Massachusetts	247	0.8	Western	178	0.5
New Hampshire	57	0.2	Mississippi		
Puerto Rico	446	1.4	Northern	66	0.2
Rhode Island	53	0.2	Southern	219	0.7
<b>SECOND CIRCUIT</b>	<b>1,169</b>	<b>3.6</b>	Texas		
Connecticut	139	0.4	Eastern	395	1.2
New York			Northern	731	2.2
Eastern	234	0.7	Southern	4,503	13.8
Northern	163	0.5	Western	4,793	14.7
Southern	356	1.1	<b>SIXTH CIRCUIT</b>	<b>1,962</b>	<b>6.0</b>
Western	201	0.6	Kentucky		
Vermont	76	0.2	Eastern	197	0.6
<b>THIRD CIRCUIT</b>	<b>1,071</b>	<b>3.3</b>	Western	176	0.5
Delaware	74	0.2	Michigan		
New Jersey	315	1.0	Eastern	348	1.1
Pennsylvania			Western	102	0.3
Eastern	242	0.7	Ohio		
Middle	207	0.6	Northern	349	1.1
Western	196	0.6	Southern	256	0.8
Virgin Islands	37	0.1	Tennessee		
<b>FOURTH CIRCUIT</b>	<b>1,959</b>	<b>6.0</b>	Eastern	227	0.7
Maryland	204	0.6	Middle	141	0.4
North Carolina			Western	166	0.5
Eastern	334	1.0	<b>SEVENTH CIRCUIT</b>	<b>943</b>	<b>2.9</b>
Middle	167	0.5	Illinois		
Western	195	0.6	Central	87	0.3
South Carolina	267	0.8	Northern	250	0.8
Virginia			Southern	125	0.4
Eastern	425	1.3	Indiana		
Western	112	0.3	Northern	148	0.5
West Virginia			Southern	144	0.4
Northern	144	0.4	Wisconsin		
Southern	111	0.3	Eastern	138	0.4
			Western	51	0.2

Table 2 (cont.)

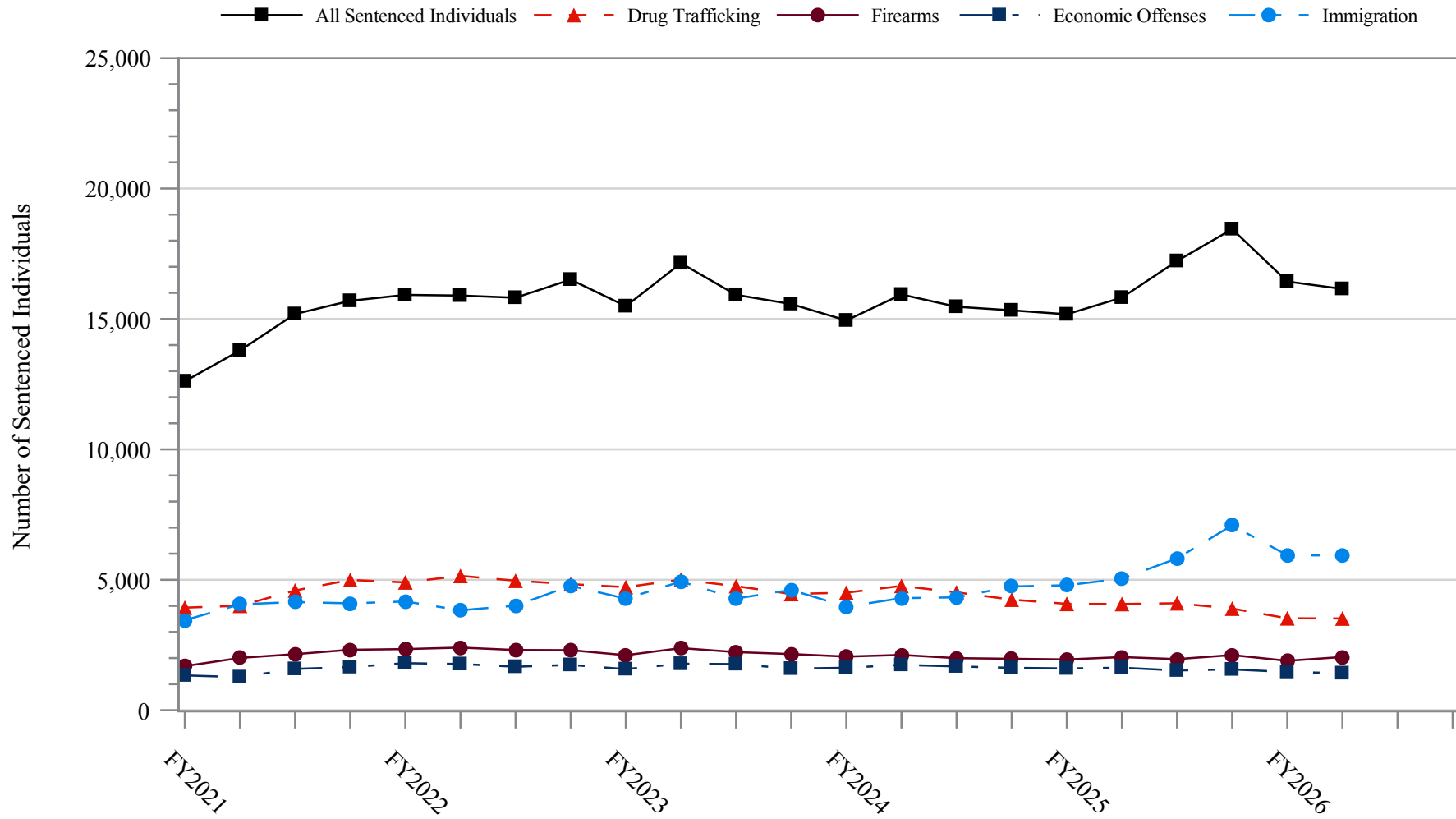
CIRCUIT			CIRCUIT		
District	N	%	District	N	%
<b>EIGHTH CIRCUIT</b>	<b>2,223</b>	<b>6.8</b>	<b>TENTH CIRCUIT</b>	<b>3,037</b>	<b>9.3</b>
Arkansas			Colorado	158	0.5
Eastern	213	0.7	Kansas	179	0.5
Western	83	0.3	New Mexico	1,721	5.3
Iowa			Oklahoma		
Northern	177	0.5	Eastern	122	0.4
Southern	150	0.5	Northern	224	0.7
Minnesota	213	0.7	Western	231	0.7
Missouri			Utah	328	1.0
Eastern	493	1.5	Wyoming	74	0.2
Western	377	1.2	<b>ELEVENTH CIRCUIT</b>	<b>2,861</b>	<b>8.8</b>
Nebraska	170	0.5	Alabama		
North Dakota	135	0.4	Middle	147	0.5
South Dakota	212	0.7	Northern	233	0.7
<b>NINTH CIRCUIT</b>	<b>5,236</b>	<b>16.1</b>	Southern	152	0.5
Alaska	90	0.3	Florida		
Arizona	1,883	5.8	Middle	853	2.6
California			Northern	206	0.6
Central	528	1.6	Southern	722	2.2
Eastern	185	0.6	Georgia		
Northern	182	0.6	Middle	168	0.5
Southern	1,258	3.9	Northern	251	0.8
Guam	9	0.0	Southern	129	0.4
Hawaii	72	0.2			
Idaho	159	0.5			
Montana	243	0.7			
Nevada	94	0.3			
Northern Mariana Islands	6	0.0			
Oregon	182	0.6			
Washington					
Eastern	158	0.5			
Western	187	0.6			

<sup>1</sup> Descriptions of variables used in this table are provided in Appendix A.

SOURCE: U.S. Sentencing Commission, Preliminary 2026 Datafile, USSCFY26 (October 1, 2025, through March 31, 2026).

Figure 2

**NUMBER OF SENTENCED INDIVIDUALS BY SELECTED PRIMARY GUIDELINES<sup>1</sup>**  
**Fiscal Years 2021 - 2025,**  
**2nd Quarter 2026 Preliminary Cumulative Data (October 1, 2025, through March 31, 2026)**



<sup>1</sup> The *Drug Trafficking* category includes individuals sentenced under §§2D1.1, 2D1.2, 2D1.5, 2D1.6, 2D1.8, 2D1.10, or 2D1.14. The *Firearms* category includes individuals sentenced under §§2K1.3, 2K1.4, 2K2.1, 2K2.4, or 2K2.5. The *Economic Offenses* category includes individuals sentenced under §§2B1.1, 2B1.4, 2B1.5, 2B2.1, 2B3.1, 2B3.2, 2B4.1, 2B5.1, or 2B5.3. The *Immigration* category includes individuals sentenced under §§2L1.1, 2L1.2, 2L2.1, or 2L2.2. Descriptions of variables used in this figure are provided in Appendix A.

SOURCE: U.S. Sentencing Commission, 2021 - 2025 Datafiles, USSCFY21 - USSCFY25, and Preliminary Data from USSCFY26 (October 1, 2025, through March 31, 2026).

Table 3

**RACE OF SENTENCED INDIVIDUALS BY TYPE OF CRIME<sup>1</sup>**  
**2nd Quarter 2026 Preliminary Cumulative Data (October 1, 2025, through March 31, 2026)**

TYPE OF CRIME	TOTAL	WHITE		BLACK		HISPANIC		OTHER	
		N	%	N	%	N	%	N	%
<b>TOTAL</b>	<b>31,444</b>	<b>5,249</b>	<b>16.7</b>	<b>6,566</b>	<b>20.9</b>	<b>18,459</b>	<b>58.7</b>	<b>1,170</b>	<b>3.7</b>
Administration of Justice	310	72	23.2	64	20.6	150	48.4	24	7.7
Antitrust	4	3	75.0	0	0.0	1	25.0	0	0.0
Arson	29	10	34.5	5	17.2	9	31.0	5	17.2
Assault	400	63	15.8	97	24.3	107	26.8	133	33.3
Bribery/Corruption	136	46	33.8	43	31.6	33	24.3	14	10.3
Burglary/Trespass	21	6	28.6	9	42.9	3	14.3	3	14.3
Child Pornography	697	512	73.5	48	6.9	105	15.1	32	4.6
Commercialized Vice	45	21	46.7	8	17.8	11	24.4	5	11.1
Drug Possession	37	17	45.9	10	27.0	6	16.2	4	10.8
Drug Trafficking	7,063	1,544	21.9	2,145	30.4	3,164	44.8	210	3.0
Environmental	69	22	31.9	2	2.9	37	53.6	8	11.6
Extortion/Racketeering	35	17	48.6	8	22.9	8	22.9	2	5.7
Firearms	3,932	796	20.2	2,102	53.5	905	23.0	129	3.3
Food and Drug	17	12	70.6	0	0.0	3	17.6	2	11.8
Forgery/Counter/Copyright	23	9	39.1	7	30.4	4	17.4	3	13.0
Fraud/Theft/Embezzlement	2,357	824	35.0	930	39.5	451	19.1	152	6.4
Immigration	13,000	228	1.8	132	1.0	12,589	96.8	51	0.4
Individual Rights	41	16	39.0	13	31.7	11	26.8	1	2.4
Kidnapping	56	5	8.9	30	53.6	18	32.1	3	5.4
Manslaughter	43	1	2.3	4	9.3	4	9.3	34	79.1
Money Laundering	621	136	21.9	174	28.0	243	39.1	68	11.0
Murder	153	19	12.4	57	37.3	55	35.9	22	14.4
National Defense	142	23	16.2	12	8.5	98	69.0	9	6.3
Obscenity/Other Sex Offenses	180	71	39.4	21	11.7	28	15.6	60	33.3
Prison Offenses	168	42	25.0	71	42.3	44	26.2	11	6.5
Robbery	520	64	12.3	327	62.9	108	20.8	21	4.0
Sexual Abuse	692	357	51.6	106	15.3	122	17.6	107	15.5
Stalking/Harassing	152	97	63.8	28	18.4	17	11.2	10	6.6
Tax	182	97	53.3	38	20.9	24	13.2	23	12.6
Other	319	119	37.3	75	23.5	101	31.7	24	7.5

<sup>1</sup> Of the 32,586 cases, 1,142 were excluded due to missing information on sentenced individual's race. Descriptions of variables used in this table are provided in Appendix A.

SOURCE: U.S. Sentencing Commission, Preliminary 2026 Datafile, USSCFY26 (October 1, 2025, through March 31, 2026).

Table 4

**GENDER OF SENTENCED INDIVIDUALS BY TYPE OF CRIME<sup>1</sup>**  
**2nd Quarter 2026 Preliminary Cumulative Data (October 1, 2025, through March 31, 2026)**

TYPE OF CRIME	TOTAL	MALE		FEMALE	
		N	%	N	%
<b>TOTAL</b>	<b>32,012</b>	<b>28,241</b>	<b>88.2</b>	<b>3,771</b>	<b>11.8</b>
Administration of Justice	313	233	74.4	80	25.6
Antitrust	4	4	100.0	0	0.0
Arson	29	25	86.2	4	13.8
Assault	409	365	89.2	44	10.8
Bribery/Corruption	136	99	72.8	37	27.2
Burglary/Trespass	22	21	95.5	1	4.5
Child Pornography	699	691	98.9	8	1.1
Commercialized Vice	45	34	75.6	11	24.4
Drug Possession	42	23	54.8	19	45.2
Drug Trafficking	7,071	6,028	85.2	1,043	14.8
Environmental	69	61	88.4	8	11.6
Extortion/Racketeering	35	35	100.0	0	0.0
Firearms	3,934	3,780	96.1	154	3.9
Food and Drug	17	11	64.7	6	35.3
Forgery/Counter/Copyright	23	17	73.9	6	26.1
Fraud/Theft/Embezzlement	2,374	1,700	71.6	674	28.4
Immigration	13,221	11,999	90.8	1,222	9.2
Individual Rights	41	33	80.5	8	19.5
Kidnapping	56	52	92.9	4	7.1
Manslaughter	43	36	83.7	7	16.3
Money Laundering	623	473	75.9	150	24.1
Murder	153	144	94.1	9	5.9
National Defense	203	187	92.1	16	7.9
Obscenity/Other Sex Offenses	180	176	97.8	4	2.2
Prison Offenses	168	155	92.3	13	7.7
Robbery	520	491	94.4	29	5.6
Sexual Abuse	692	649	93.8	43	6.2
Stalking/Harassing	152	140	92.1	12	7.9
Tax	182	137	75.3	45	24.7
Other	556	442	79.5	114	20.5

<sup>1</sup> Of the 32,586 cases, 574 were excluded due to missing information on sentenced individual's gender. Descriptions of variables used in this table are provided in Appendix A.

Table 5

**CITIZENSHIP OF SENTENCED INDIVIDUALS BY TYPE OF CRIME<sup>1</sup>**  
**2nd Quarter 2026 Preliminary Cumulative Data (October 1, 2025, through March 31, 2026)**

TYPE OF CRIME	TOTAL	U.S. CITIZEN		NON-U.S. CITIZEN	
		N	%	N	%
<b>TOTAL</b>	<b>32,383</b>	<b>16,445</b>	<b>50.8</b>	<b>15,938</b>	<b>49.2</b>
Administration of Justice	312	216	69.2	96	30.8
Antitrust	4	2	50.0	2	50.0
Arson	29	25	86.2	4	13.8
Assault	399	351	88.0	48	12.0
Bribery/Corruption	136	125	91.9	11	8.1
Burglary/Trespass	21	18	85.7	3	14.3
Child Pornography	699	660	94.4	39	5.6
Commercialized Vice	44	33	75.0	11	25.0
Drug Possession	37	35	94.6	2	5.4
Drug Trafficking	7,065	5,636	79.8	1,429	20.2
Environmental	67	39	58.2	28	41.8
Extortion/Racketeering	35	27	77.1	8	22.9
Firearms	3,934	3,598	91.5	336	8.5
Food and Drug	17	15	88.2	2	11.8
Forgery/Counter/Copyright	23	17	73.9	6	26.1
Fraud/Theft/Embezzlement	2,364	1,964	83.1	400	16.9
Immigration	13,258	927	7.0	12,331	93.0
Individual Rights	41	33	80.5	8	19.5
Kidnapping	56	44	78.6	12	21.4
Manslaughter	43	42	97.7	1	2.3
Money Laundering	623	413	66.3	210	33.7
Murder	153	123	80.4	30	19.6
National Defense	331	63	19.0	268	81.0
Obscenity/Other Sex Offenses	180	171	95.0	9	5.0
Prison Offenses	167	156	93.4	11	6.6
Robbery	520	481	92.5	39	7.5
Sexual Abuse	692	643	92.9	49	7.1
Stalking/Harassing	152	144	94.7	8	5.3
Tax	182	161	88.5	21	11.5
Other	799	283	35.4	516	64.6

<sup>1</sup> Of the 32,586 cases, 203 were excluded due to missing information on sentenced individual's citizenship status. Descriptions of variables used in this table are provided in Appendix A.

SOURCE: U.S. Sentencing Commission, Preliminary 2026 Datafile, USSCFY26 (October 1, 2025, through March 31, 2026).

Table 6

**SENTENCE LENGTH BY TYPE OF CRIME<sup>1</sup>**  
**2nd Quarter 2026 Preliminary Cumulative Data (October 1, 2025, through March 31, 2026)**

TYPE OF CRIME	Mean Months	Median Months	N
<b>TOTAL</b>	<b>44</b>	<b>13</b>	<b>32,586</b>
Administration of Justice	9	6	313
Antitrust	2	0	4
Arson	64	60	29
Assault	63	36	409
Bribery/Corruption	18	12	136
Burglary/Trespass	21	14	22
Child Pornography	123	108	699
Commercialized Vice	12	8	45
Drug Possession	1	0	44
Drug Trafficking	88	70	7,071
Environmental	4	0	69
Extortion/Racketeering	37	15	35
Firearms	49	37	3,935
Food and Drug	11	0	17
Forgery/Counter/Copyright	18	18	23
Fraud/Theft/Embezzlement	24	12	2,375
Immigration	8	4	13,314
Individual Rights	45	18	41
Kidnapping	217	184	56
Manslaughter	65	46	43
Money Laundering	57	32	623
Murder	285	292	153
National Defense	10	0	336
Obscenity/Other Sex Offenses	20	18	180
Prison Offenses	13	12	170
Robbery	108	95	520
Sexual Abuse	222	204	692
Stalking/Harassing	30	23	152
Tax	17	12	182
Other	1	0	898

<sup>1</sup> Sentences greater than 470 months (including life) and probation were included in the sentence average computations as 470 months and zero months, respectively. In addition, the information presented in this table includes conditions of confinement as described in USSG §5C1.1. Descriptions of variables used in this table are provided in Appendix A.

Table 7

SENTENCE TYPE BY TYPE OF CRIME<sup>1</sup>

2nd Quarter 2026 Preliminary Cumulative Data (October 1, 2025, through March 31, 2026)

TYPE OF CRIME	TOTAL	TOTAL RECEIVING IMPRISONMENT				Prison and Alternatives <sup>2</sup>		TOTAL RECEIVING PROBATION				Probation and Alternatives <sup>2</sup>		Probation Only		TOTAL RECEIVING FINE ONLY	
		N	%	N	%	N	%	N	%	N	%	N	%	N	%	N	%
<b>TOTAL</b>	<b>32,586</b>	<b>30,554</b>	<b>93.8</b>	<b>30,003</b>	<b>92.1</b>	<b>551</b>	<b>1.7</b>	<b>1,902</b>	<b>5.8</b>	<b>303</b>	<b>0.9</b>	<b>1,599</b>	<b>4.9</b>	<b>130</b>	<b>0.4</b>		
Administration of Justice	313	228	72.8	213	68.1	15	4.8	83	26.5	10	3.2	73	23.3	2	0.6		
Antitrust	4	0	0.0	0	0.0	0	0.0	4	100.0	1	25.0	3	75.0	0	0.0		
Arson	29	28	96.6	27	93.1	1	3.4	1	3.4	1	3.4	0	0.0	0	0.0		
Assault	409	361	88.3	344	84.1	17	4.2	46	11.2	6	1.5	40	9.8	2	0.5		
Bribery/Corruption	136	98	72.1	86	63.2	12	8.8	38	27.9	11	8.1	27	19.9	0	0.0		
Burglary/Trespass	22	19	86.4	18	81.8	1	4.5	3	13.6	0	0.0	3	13.6	0	0.0		
Child Pornography	699	697	99.7	690	98.7	7	1.0	2	0.3	1	0.1	1	0.1	0	0.0		
Commercialized Vice	45	30	66.7	26	57.8	4	8.9	13	28.9	2	4.4	11	24.4	2	4.4		
Drug Possession	44	18	40.9	18	40.9	0	0.0	19	43.2	2	4.5	17	38.6	7	15.9		
Drug Trafficking	7,071	6,866	97.1	6,709	94.9	157	2.2	205	2.9	40	0.6	165	2.3	0	0.0		
Environmental	69	34	49.3	33	47.8	1	1.4	34	49.3	4	5.8	30	43.5	1	1.4		
Extortion/Racketeering	35	29	82.9	28	80.0	1	2.9	6	17.1	3	8.6	3	8.6	0	0.0		
Firearms	3,935	3,744	95.1	3,654	92.9	90	2.3	191	4.9	36	0.9	155	3.9	0	0.0		
Food and Drug	17	6	35.3	6	35.3	0	0.0	10	58.8	1	5.9	9	52.9	1	5.9		
Forgery/Counter/Copyright	23	19	82.6	19	82.6	0	0.0	4	17.4	1	4.3	3	13.0	0	0.0		
Fraud/Theft/Embezzlement	2,375	1,828	77.0	1,749	73.6	79	3.3	538	22.7	98	4.1	440	18.5	9	0.4		
Immigration	13,314	12,995	97.6	12,911	97.0	84	0.6	319	2.4	35	0.3	284	2.1	0	0.0		
Individual Rights	41	33	80.5	32	78.0	1	2.4	8	19.5	0	0.0	8	19.5	0	0.0		
Kidnapping	56	56	100.0	55	98.2	1	1.8	0	0.0	0	0.0	0	0.0	0	0.0		
Manslaughter	43	40	93.0	38	88.4	2	4.7	3	7.0	0	0.0	3	7.0	0	0.0		
Money Laundering	623	559	89.7	540	86.7	19	3.0	64	10.3	18	2.9	46	7.4	0	0.0		
Murder	153	152	99.3	150	98.0	2	1.3	1	0.7	0	0.0	1	0.7	0	0.0		
National Defense	336	315	93.8	310	92.3	5	1.5	10	3.0	0	0.0	10	3.0	11	3.3		
Obscenity/Other Sex Offenses	180	174	96.7	167	92.8	7	3.9	6	3.3	0	0.0	6	3.3	0	0.0		
Prison Offenses	170	161	94.7	155	91.2	6	3.5	9	5.3	2	1.2	7	4.1	0	0.0		
Robbery	520	514	98.8	506	97.3	8	1.5	6	1.2	0	0.0	6	1.2	0	0.0		
Sexual Abuse	692	689	99.6	679	98.1	10	1.4	3	0.4	1	0.1	2	0.3	0	0.0		
Stalking/Harassing	152	135	88.8	124	81.6	11	7.2	17	11.2	2	1.3	15	9.9	0	0.0		
Tax	182	123	67.6	116	63.7	7	3.8	59	32.4	14	7.7	45	24.7	0	0.0		
Other	898	603	67.1	600	66.8	3	0.3	200	22.3	14	1.6	186	20.7	95	10.6		

<sup>1</sup> Descriptions of variables used in this table are provided in Appendix A.<sup>2</sup> Alternatives include all cases in which sentenced individuals received conditions of confinement as described in USSG §5C1.1.

Table 8

**SENTENCE IMPOSED RELATIVE TO THE GUIDELINE RANGE<sup>1</sup>**  
**2nd Quarter 2026 Preliminary Cumulative Data (October 1, 2025, through March 31, 2026)**

	N	%
<b>TOTAL CASES</b>	<b>32,390</b>	<b>100.0</b>
<b>Within Guideline Range</b>	<b>19,136</b>	<b>59.1</b>
Within Range	17,511	54.1
EDP Within Range <sup>2</sup>	1,625	5.0
<b>Above Guideline Range<sup>3</sup></b>	<b>1,433</b>	<b>4.4</b>
Above Range	1,412	4.4
EDP Above Range	21	0.1
<b>§5K1.1 Substantial Assistance</b>	<b>2,284</b>	<b>7.1</b>
§5K1.1 Substantial Assistance Only	998	3.1
§5K1.1 Substantial Assistance and EDP	27	0.1
§5K1.1 Substantial Assistance and Other Below Range <sup>4</sup>	1,259	3.9
<b>Below Guideline Range</b>	<b>9,537</b>	<b>29.4</b>
EDP Below Range <sup>5</sup>	780	2.4
Government Below Range <sup>6</sup>	2,971	9.2
Non-Government Below Range <sup>7</sup>	5,786	17.9

<sup>1</sup> This table reflects the 32,586 cases sentenced on or after October 1, 2025, with court documentation cumulatively received, coded, and edited at the U.S. Sentencing Commission by June 22, 2026. Of these, 196 cases were excluded because information was missing from the submitted documents that prevented the comparison of the sentence and the guideline range. Descriptions of variables used in this table are provided in Appendix A.

<sup>2</sup> Cases in which the court applied the adjustment at §3F1.1 for participation in an Early Disposition Program and where the sentence imposed was within the guideline range.

<sup>3</sup> Cases in which the sentence imposed was above the applicable guideline range and for which the court cited a reason on Part VI of the Statement of Reasons form, other than §5K1.1, or where no reason was given.

<sup>4</sup> Cases where the sentence imposed was below the applicable guideline range and where the court cited §5K1.1 and at least one other reason on Part VI of the Statement of Reasons form.

<sup>5</sup> Cases in which the court applied the adjustment at §3F1.1 for participation in an Early Disposition Program, where the sentence imposed was below the guideline range, and the court cited a reason on Part VI of the Statement of Reasons form other than §5K1.1 or gave no reason for the sentence.

<sup>6</sup> Cases in which the government sought a sentence below the guideline range, the court did not apply the adjustment at §3F1.1, the sentence imposed was below the applicable guideline range, and the court cited a reason on Part VI of the Statement of Reasons form other than §5K1.1 or gave no reason for the sentence.

<sup>7</sup> Cases in which the government did not seek a sentence below the guideline range, the court did not apply the adjustment at §3F1.1, the sentence imposed was below the applicable guideline range, and the court cited a reason on Part VI of the Statement of Reasons form other than §5K1.1 or gave no reason for the sentence.

SOURCE: U.S. Sentencing Commission, Preliminary 2026 Datafile, USSCFY26 (October 1, 2025, through March 31, 2026).

Table 9

**SENTENCE IMPOSED RELATIVE TO THE GUIDELINE RANGE  
IN EACH CIRCUIT AND DISTRICT<sup>1</sup>**

**2nd Quarter 2026 Preliminary Cumulative Data (October 1, 2025, through March 31, 2026)**

CIRCUIT District	TOTAL	WITHIN GUIDELINE RANGE		ABOVE GUIDELINE RANGE		§5K1.1 SUBSTANTIAL ASSISTANCE		EDP BELOW RANGE		GOVERNMENT BELOW RANGE		NON- GOVERNMENT BELOW RANGE	
		N	%	N	%	N	%	N	%	N	%	N	%
<b>TOTAL</b>	<b>32,390</b>	<b>19,136</b>	<b>59.1</b>	<b>1,433</b>	<b>4.4</b>	<b>2,284</b>	<b>7.1</b>	<b>780</b>	<b>2.4</b>	<b>2,971</b>	<b>9.2</b>	<b>5,786</b>	<b>17.9</b>
<b>D.C. CIRCUIT</b>	<b>152</b>	<b>55</b>	<b>36.2</b>	<b>4</b>	<b>2.6</b>	<b>19</b>	<b>12.5</b>	<b>0</b>	<b>0.0</b>	<b>12</b>	<b>7.9</b>	<b>62</b>	<b>40.8</b>
District of Columbia	152	55	36.2	4	2.6	19	12.5	0	0.0	12	7.9	62	40.8
<b>FIRST CIRCUIT</b>	<b>851</b>	<b>277</b>	<b>32.5</b>	<b>26</b>	<b>3.1</b>	<b>83</b>	<b>9.8</b>	<b>6</b>	<b>0.7</b>	<b>221</b>	<b>26.0</b>	<b>238</b>	<b>28.0</b>
Maine	51	18	35.3	0	0.0	8	15.7	0	0.0	2	3.9	23	45.1
Massachusetts	245	56	22.9	4	1.6	34	13.9	1	0.4	71	29.0	79	32.2
New Hampshire	57	10	17.5	1	1.8	5	8.8	1	1.8	21	36.8	19	33.3
Puerto Rico	445	181	40.7	21	4.7	35	7.9	4	0.9	116	26.1	88	19.8
Rhode Island	53	12	22.6	0	0.0	1	1.9	0	0.0	11	20.8	29	54.7
<b>SECOND CIRCUIT</b>	<b>1,166</b>	<b>399</b>	<b>34.2</b>	<b>24</b>	<b>2.1</b>	<b>157</b>	<b>13.5</b>	<b>0</b>	<b>0.0</b>	<b>147</b>	<b>12.6</b>	<b>439</b>	<b>37.7</b>
Connecticut	139	42	30.2	2	1.4	15	10.8	0	0.0	30	21.6	50	36.0
New York													
Eastern	234	50	21.4	3	1.3	38	16.2	0	0.0	29	12.4	114	48.7
Northern	163	81	49.7	4	2.5	27	16.6	0	0.0	6	3.7	45	27.6
Southern	354	93	26.3	3	0.8	41	11.6	0	0.0	54	15.3	163	46.0
Western	200	112	56.0	10	5.0	24	12.0	0	0.0	14	7.0	40	20.0
Vermont	76	21	27.6	2	2.6	12	15.8	0	0.0	14	18.4	27	35.5
<b>THIRD CIRCUIT</b>	<b>1,071</b>	<b>436</b>	<b>40.7</b>	<b>27</b>	<b>2.5</b>	<b>157</b>	<b>14.7</b>	<b>5</b>	<b>0.5</b>	<b>197</b>	<b>18.4</b>	<b>249</b>	<b>23.2</b>
Delaware	74	49	66.2	0	0.0	7	9.5	3	4.1	9	12.2	6	8.1
New Jersey	315	114	36.2	2	0.6	56	17.8	1	0.3	82	26.0	60	19.0
Pennsylvania													
Eastern	242	80	33.1	5	2.1	41	16.9	0	0.0	33	13.6	83	34.3
Middle	207	101	48.8	11	5.3	28	13.5	1	0.5	20	9.7	46	22.2
Western	196	66	33.7	7	3.6	24	12.2	0	0.0	51	26.0	48	24.5
Virgin Islands	37	26	70.3	2	5.4	1	2.7	0	0.0	2	5.4	6	16.2
<b>FOURTH CIRCUIT</b>	<b>1,948</b>	<b>948</b>	<b>48.7</b>	<b>73</b>	<b>3.7</b>	<b>231</b>	<b>11.9</b>	<b>0</b>	<b>0.0</b>	<b>161</b>	<b>8.3</b>	<b>535</b>	<b>27.5</b>
Maryland	199	59	29.6	6	3.0	34	17.1	0	0.0	47	23.6	53	26.6
North Carolina													
Eastern	333	213	64.0	9	2.7	67	20.1	0	0.0	7	2.1	37	11.1
Middle	167	96	57.5	16	9.6	10	6.0	0	0.0	17	10.2	28	16.8
Western	195	103	52.8	3	1.5	26	13.3	0	0.0	10	5.1	53	27.2
South Carolina	267	106	39.7	6	2.2	42	15.7	0	0.0	21	7.9	92	34.5
Virginia													
Eastern	422	214	50.7	17	4.0	9	2.1	0	0.0	37	8.8	145	34.4
Western	111	38	34.2	0	0.0	27	24.3	0	0.0	11	9.9	35	31.5
West Virginia													
Northern	144	66	45.8	14	9.7	10	6.9	0	0.0	6	4.2	48	33.3
Southern	110	53	48.2	2	1.8	6	5.5	0	0.0	5	4.5	44	40.0

Table 9 (cont.)

CIRCUIT District	TOTAL	WITHIN GUIDELINE RANGE		ABOVE GUIDELINE RANGE		§5K1.1 SUBSTANTIAL ASSISTANCE		EDP BELOW RANGE		GOVERNMENT BELOW RANGE		NON- GOVERNMENT BELOW RANGE	
		N	%	N	%	N	%	N	%	N	%	N	%
<b>FIFTH CIRCUIT</b>	<b>11,072</b>	<b>8,585</b>	<b>77.5</b>	<b>770</b>	<b>7.0</b>	<b>340</b>	<b>3.1</b>	<b>39</b>	<b>0.4</b>	<b>174</b>	<b>1.6</b>	<b>1,164</b>	<b>10.5</b>
Louisiana													
Eastern	171	118	69.0	6	3.5	13	7.6	0	0.0	6	3.5	28	16.4
Middle	63	43	68.3	1	1.6	8	12.7	0	0.0	0	0.0	11	17.5
Western	176	123	69.9	5	2.8	10	5.7	0	0.0	10	5.7	28	15.9
Mississippi													
Northern	60	30	50.0	2	3.3	7	11.7	0	0.0	6	10.0	15	25.0
Southern	218	166	76.1	8	3.7	17	7.8	0	0.0	1	0.5	26	11.9
Texas													
Eastern	394	229	58.1	14	3.6	38	9.6	0	0.0	48	12.2	65	16.5
Northern	731	507	69.4	33	4.5	51	7.0	0	0.0	18	2.5	122	16.7
Southern	4,490	3,618	80.6	76	1.7	116	2.6	36	0.8	54	1.2	590	13.1
Western	4,769	3,751	78.7	625	13.1	80	1.7	3	0.1	31	0.7	279	5.9
<b>SIXTH CIRCUIT</b>	<b>1,959</b>	<b>810</b>	<b>41.3</b>	<b>62</b>	<b>3.2</b>	<b>232</b>	<b>11.8</b>	<b>1</b>	<b>0.1</b>	<b>307</b>	<b>15.7</b>	<b>547</b>	<b>27.9</b>
Kentucky													
Eastern	197	94	47.7	1	0.5	29	14.7	0	0.0	14	7.1	59	29.9
Western	176	54	30.7	1	0.6	45	25.6	0	0.0	35	19.9	41	23.3
Michigan													
Eastern	346	155	44.8	4	1.2	13	3.8	0	0.0	18	5.2	156	45.1
Western	102	59	57.8	8	7.8	11	10.8	0	0.0	1	1.0	23	22.5
Ohio													
Northern	349	158	45.3	21	6.0	24	6.9	0	0.0	44	12.6	102	29.2
Southern	256	66	25.8	4	1.6	37	14.5	1	0.4	85	33.2	63	24.6
Tennessee													
Eastern	227	112	49.3	10	4.4	38	16.7	0	0.0	37	16.3	30	13.2
Middle	140	35	25.0	7	5.0	15	10.7	0	0.0	56	40.0	27	19.3
Western	166	77	46.4	6	3.6	20	12.0	0	0.0	17	10.2	46	27.7
<b>SEVENTH CIRCUIT</b>	<b>940</b>	<b>387</b>	<b>41.2</b>	<b>35</b>	<b>3.7</b>	<b>100</b>	<b>10.6</b>	<b>1</b>	<b>0.1</b>	<b>121</b>	<b>12.9</b>	<b>296</b>	<b>31.5</b>
Illinois													
Central	86	28	32.6	3	3.5	17	19.8	0	0.0	6	7.0	32	37.2
Northern	248	75	30.2	10	4.0	23	9.3	0	0.0	26	10.5	114	46.0
Southern	125	71	56.8	8	6.4	12	9.6	0	0.0	4	3.2	30	24.0
Indiana													
Northern	148	93	62.8	4	2.7	17	11.5	0	0.0	6	4.1	28	18.9
Southern	144	79	54.9	6	4.2	22	15.3	0	0.0	8	5.6	29	20.1
Wisconsin													
Eastern	138	27	19.6	4	2.9	5	3.6	1	0.7	58	42.0	43	31.2
Western	51	14	27.5	0	0.0	4	7.8	0	0.0	13	25.5	20	39.2
<b>EIGHTH CIRCUIT</b>	<b>2,222</b>	<b>1,036</b>	<b>46.6</b>	<b>129</b>	<b>5.8</b>	<b>237</b>	<b>10.7</b>	<b>2</b>	<b>0.1</b>	<b>233</b>	<b>10.5</b>	<b>585</b>	<b>26.3</b>
Arkansas													
Eastern	213	97	45.5	17	8.0	18	8.5	0	0.0	12	5.6	69	32.4
Western	83	33	39.8	10	12.0	10	12.0	0	0.0	2	2.4	28	33.7
Iowa													
Northern	177	91	51.4	11	6.2	21	11.9	0	0.0	16	9.0	38	21.5
Southern	150	61	40.7	5	3.3	17	11.3	0	0.0	11	7.3	56	37.3
Minnesota	213	76	35.7	4	1.9	26	12.2	0	0.0	25	11.7	82	38.5
Missouri													
Eastern	493	257	52.1	22	4.5	42	8.5	0	0.0	92	18.7	80	16.2
Western	377	159	42.2	45	11.9	55	14.6	0	0.0	32	8.5	86	22.8
Nebraska	170	112	65.9	5	2.9	1	0.6	0	0.0	7	4.1	45	26.5
North Dakota	134	46	34.3	5	3.7	44	32.8	2	1.5	18	13.4	19	14.2
South Dakota	212	104	49.1	5	2.4	3	1.4	0	0.0	18	8.5	82	38.7

Table 9 (cont.)

CIRCUIT District	TOTAL	WITHIN GUIDELINE RANGE		ABOVE GUIDELINE RANGE		§5K1.1 SUBSTANTIAL ASSISTANCE		EDP BELOW RANGE		GOVERNMENT BELOW RANGE		NON- GOVERNMENT BELOW RANGE	
		N	%	N	%	N	%	N	%	N	%	N	%
<b>NINTH CIRCUIT</b>	<b>5,136</b>	<b>2,400</b>	<b>46.7</b>	<b>75</b>	<b>1.5</b>	<b>371</b>	<b>7.2</b>	<b>626</b>	<b>12.2</b>	<b>915</b>	<b>17.8</b>	<b>749</b>	<b>14.6</b>
Alaska	90	24	26.7	4	4.4	12	13.3	0	0.0	36	40.0	14	15.6
Arizona	1,817	1,153	63.5	13	0.7	41	2.3	307	16.9	183	10.1	120	6.6
California													
Central	521	174	33.4	17	3.3	64	12.3	18	3.5	74	14.2	174	33.4
Eastern	185	63	34.1	3	1.6	28	15.1	1	0.5	30	16.2	60	32.4
Northern	180	31	17.2	3	1.7	23	12.8	1	0.6	75	41.7	47	26.1
Southern	1,236	548	44.3	12	1.0	62	5.0	278	22.5	250	20.2	86	7.0
Guam	9	7	77.8	0	0.0	0	0.0	0	0.0	2	22.2	0	0.0
Hawaii	72	21	29.2	3	4.2	12	16.7	0	0.0	8	11.1	28	38.9
Idaho	159	72	45.3	5	3.1	19	11.9	2	1.3	20	12.6	41	25.8
Montana	242	94	38.8	2	0.8	42	17.4	0	0.0	16	6.6	88	36.4
Nevada	94	20	21.3	0	0.0	6	6.4	16	17.0	25	26.6	27	28.7
Northern Mariana Islands	6	2	33.3	0	0.0	3	50.0	0	0.0	0	0.0	1	16.7
Oregon	180	43	23.9	2	1.1	39	21.7	0	0.0	82	45.6	14	7.8
Washington													
Eastern	158	65	41.1	8	5.1	18	11.4	1	0.6	44	27.8	22	13.9
Western	187	83	44.4	3	1.6	2	1.1	2	1.1	70	37.4	27	14.4
<b>TENTH CIRCUIT</b>	<b>3,035</b>	<b>2,111</b>	<b>69.6</b>	<b>91</b>	<b>3.0</b>	<b>114</b>	<b>3.8</b>	<b>99</b>	<b>3.3</b>	<b>292</b>	<b>9.6</b>	<b>328</b>	<b>10.8</b>
Colorado	158	40	25.3	8	5.1	23	14.6	17	10.8	35	22.2	35	22.2
Kansas	179	94	52.5	13	7.3	12	6.7	1	0.6	22	12.3	37	20.7
New Mexico	1,721	1,458	84.7	24	1.4	26	1.5	61	3.5	60	3.5	92	5.3
Oklahoma													
Eastern	122	87	71.3	5	4.1	5	4.1	0	0.0	6	4.9	19	15.6
Northern	224	138	61.6	8	3.6	22	9.8	0	0.0	23	10.3	33	14.7
Western	230	121	52.6	22	9.6	3	1.3	0	0.0	12	5.2	72	31.3
Utah	327	140	42.8	9	2.8	13	4.0	19	5.8	126	38.5	20	6.1
Wyoming	74	33	44.6	2	2.7	10	13.5	1	1.4	8	10.8	20	27.0
<b>ELEVENTH CIRCUIT</b>	<b>2,838</b>	<b>1,692</b>	<b>59.6</b>	<b>117</b>	<b>4.1</b>	<b>243</b>	<b>8.6</b>	<b>1</b>	<b>0.0</b>	<b>191</b>	<b>6.7</b>	<b>594</b>	<b>20.9</b>
Alabama													
Middle	147	81	55.1	10	6.8	14	9.5	0	0.0	7	4.8	35	23.8
Northern	233	165	70.8	12	5.2	22	9.4	0	0.0	2	0.9	32	13.7
Southern	152	87	57.2	6	3.9	31	20.4	1	0.7	2	1.3	25	16.4
Florida													
Middle	851	511	60.0	36	4.2	78	9.2	0	0.0	31	3.6	195	22.9
Northern	205	122	59.5	13	6.3	17	8.3	0	0.0	4	2.0	49	23.9
Southern	702	434	61.8	27	3.8	32	4.6	0	0.0	53	7.5	156	22.2
Georgia													
Middle	168	107	63.7	3	1.8	20	11.9	0	0.0	2	1.2	36	21.4
Northern	251	92	36.7	7	2.8	11	4.4	0	0.0	88	35.1	53	21.1
Southern	129	93	72.1	3	2.3	18	14.0	0	0.0	2	1.6	13	10.1

<sup>1</sup> Of the 32,586 cases, 196 were excluded because information was missing from the submitted documents that prevented the comparison of the sentence and the guideline range. Descriptions of variables used in this table are provided in Appendix A.

SOURCE: U.S. Sentencing Commission, Preliminary 2026 Datafile, USSCFY26 (October 1, 2025, through March 31, 2026).

Table 10

**SENTENCE IMPOSED RELATIVE TO THE GUIDELINE RANGE  
BY TYPE OF CRIME<sup>1</sup>**

**2nd Quarter 2026 Preliminary Cumulative Data (October 1, 2025, through March 31, 2026)**

TYPE OF CRIME	TOTAL	WITHIN		ABOVE		§5K1.1		EDP		GOVERNMENT		NON-	
		GUIDELINE		GUIDELINE		SUBSTANTIAL		BELOW		BELOW		GOVERNMENT	
		RANGE		RANGE		ASSISTANCE		RANGE		RANGE		BELOW	
		N	%	N	%	N	%	N	%	N	%	N	%
<b>TOTAL</b>	<b>32,390</b>	<b>19,136</b>	<b>59.1</b>	<b>1,433</b>	<b>4.4</b>	<b>2,284</b>	<b>7.1</b>	<b>780</b>	<b>2.4</b>	<b>2,971</b>	<b>9.2</b>	<b>5,786</b>	<b>17.9</b>
Administration of Justice	310	163	52.6	10	3.2	13	4.2	1	0.3	55	17.7	68	21.9
Antitrust	4	1	25.0	0	0.0	2	50.0	0	0.0	1	25.0	0	0.0
Arson	29	16	55.2	5	17.2	3	10.3	0	0.0	3	10.3	2	6.9
Assault	398	189	47.5	38	9.5	17	4.3	0	0.0	64	16.1	90	22.6
Bribery/Corruption	136	18	13.2	0	0.0	60	44.1	0	0.0	15	11.0	43	31.6
Burglary/Trespass	22	11	50.0	3	13.6	1	4.5	0	0.0	4	18.2	3	13.6
Child Pornography	699	276	39.5	41	5.9	11	1.6	0	0.0	166	23.7	205	29.3
Commercialized Vice	45	28	62.2	1	2.2	4	8.9	0	0.0	3	6.7	9	20.0
Drug Possession	39	36	92.3	1	2.6	1	2.6	0	0.0	1	2.6	0	0.0
Drug Trafficking	7,067	2,255	31.9	150	2.1	1,289	18.2	264	3.7	1,187	16.8	1,922	27.2
Environmental	69	49	71.0	1	1.4	0	0.0	0	0.0	9	13.0	10	14.5
Extortion/Racketeering	35	10	28.6	5	14.3	4	11.4	0	0.0	3	8.6	13	37.1
Firearms	3,930	1,950	49.6	241	6.1	195	5.0	4	0.1	445	11.3	1,095	27.9
Food and Drug	17	11	64.7	0	0.0	0	0.0	0	0.0	3	17.6	3	17.6
Forgery/Counter/Copyright	23	14	60.9	0	0.0	3	13.0	0	0.0	1	4.3	5	21.7
Fraud/Theft/Embezzlement	2,359	992	42.1	64	2.7	318	13.5	3	0.1	302	12.8	680	28.8
Immigration	13,195	10,891	82.5	735	5.6	68	0.5	503	3.8	188	1.4	810	6.1
Individual Rights	40	16	40.0	1	2.5	8	20.0	0	0.0	7	17.5	8	20.0
Kidnapping	55	22	40.0	2	3.6	6	10.9	0	0.0	11	20.0	14	25.5
Manslaughter	43	17	39.5	14	32.6	0	0.0	0	0.0	5	11.6	7	16.3
Money Laundering	623	155	24.9	21	3.4	134	21.5	2	0.3	121	19.4	190	30.5
Murder	153	54	35.3	8	5.2	31	20.3	0	0.0	26	17.0	34	22.2
National Defense	321	256	79.8	1	0.3	16	5.0	0	0.0	15	4.7	33	10.3
Obscenity/Other Sex Offenses	180	102	56.7	13	7.2	1	0.6	0	0.0	13	7.2	51	28.3
Prison Offenses	168	108	64.3	6	3.6	1	0.6	1	0.6	20	11.9	32	19.0
Robbery	520	199	38.3	36	6.9	46	8.8	0	0.0	82	15.8	157	30.2
Sexual Abuse	691	315	45.6	13	1.9	27	3.9	2	0.3	167	24.2	167	24.2
Stalking/Harassing	152	66	43.4	17	11.2	2	1.3	0	0.0	26	17.1	41	27.0
Tax	182	47	25.8	4	2.2	22	12.1	0	0.0	24	13.2	85	46.7
Other	885	869	98.2	2	0.2	1	0.1	0	0.0	4	0.5	9	1.0

<sup>1</sup> Of the 32,586 cases, 196 were excluded because information was missing from the submitted documents that prevented the comparison of the sentence and the guideline range. Descriptions of variables used in this table are provided in Appendix A.

SOURCE: U.S. Sentencing Commission, Preliminary 2026 Datafile, USSCFY26 (October 1, 2025, through March 31, 2026).

Table 11

SENTENCE IMPOSED RELATIVE TO THE GUIDELINE RANGE BY PRIMARY SENTENCING GUIDELINE<sup>1</sup>  
 2nd Quarter 2026 Preliminary Cumulative Data (October 1, 2025, through March 31, 2026)

Guideline	Total	Within Guideline Range	Above Guideline Range	§5K1.1 Substantial Assistance	EDP Below Range	Gov't Below Range	Non-Gov't Below Range	Guideline	Total	Within Guideline Range	Above Guideline Range	§5K1.1 Substantial Assistance	EDP Below Range	Gov't Below Range	Non-Gov't Below Range
§2A1.1	106	39	2	24	0	15	26	§2D1.8	7	1	0	1	0	1	4
§2A1.2	28	12	6	2	0	4	4	§2D1.9	0	0	0	0	0	0	0
§2A1.3	15	5	8	0	0	0	2	§2D1.10	0	0	0	0	0	0	0
§2A1.4	28	12	6	0	0	5	5	§2D1.11	0	0	0	0	0	0	0
§2A1.5	10	2	0	0	0	6	2	§2D1.12	2	1	1	0	0	0	0
§2A2.1	92	41	11	8	0	6	26	§2D1.13	3	3	0	0	0	0	0
§2A2.2	238	103	24	7	0	43	61	§2D1.14	0	0	0	0	0	0	0
§2A2.3	26	21	3	0	0	1	1	§2D2.1	24	22	1	1	0	0	0
§2A2.4	155	88	2	0	0	27	38	§2D2.2	14	13	0	0	0	1	0
§2A3.1	72	29	0	3	1	17	22	§2D2.3	0	0	0	0	0	0	0
§2A3.2	28	22	3	0	0	2	1	§2D3.1	1	1	0	0	0	0	0
§2A3.3	1	1	0	0	0	0	0	§2D3.2	0	0	0	0	0	0	0
§2A3.4	23	15	1	0	0	4	3	§2D3.3	0	0	0	0	0	0	0
§2A3.5	162	92	9	1	0	13	47	§2D3.4	0	0	0	0	0	0	0
§2A4.1	51	20	1	6	0	10	14	§2D3.5	0	0	0	0	0	0	0
§2A4.2	1	0	0	0	0	1	0	§2E1.1	16	4	1	3	0	0	8
§2A5.1	1	1	0	0	0	0	0	§2E1.2	1	1	0	0	0	0	0
§2A5.2	22	14	0	0	0	2	6	§2E1.3	0	0	0	0	0	0	0
§2A5.3	0	0	0	0	0	0	0	§2E1.4	0	0	0	0	0	0	0
§2A6.1	110	51	9	0	0	16	34	§2E1.5	0	0	0	0	0	0	0
§2A6.2	41	15	8	2	0	9	7	§2E2.1	0	0	0	0	0	0	0
§2B1.1	2,267	925	63	310	3	296	670	§2E3.1	27	16	0	2	0	2	7
§2B1.2	0	0	0	0	0	0	0	§2E3.2	0	0	0	0	0	0	0
§2B1.3	0	0	0	0	0	0	0	§2E3.3	0	0	0	0	0	0	0
§2B1.4	7	1	0	3	0	1	2	§2E4.1	1	0	0	0	0	0	1
§2B1.5	11	4	0	1	0	1	5	§2E5.1	0	0	0	0	0	0	0
§2B1.6 <sup>2</sup>	27	23	0	4	0	0	0	§2E5.2	0	0	0	0	0	0	0
§2B2.1	15	4	3	1	0	4	3	§2E5.3	0	0	0	0	0	0	0
§2B2.2	0	0	0	0	0	0	0	§2E5.4	0	0	0	0	0	0	0
§2B2.3	5	5	0	0	0	0	0	§2E5.5	0	0	0	0	0	0	0
§2B3.1	513	196	35	46	0	79	157	§2E5.6	0	0	0	0	0	0	0
§2B3.2	10	2	2	0	0	2	4	§2F1.1	0	0	0	0	0	0	0
§2B3.3	4	2	0	1	0	1	0	§2F1.2	0	0	0	0	0	0	0
§2B4.1	40	3	0	26	0	3	8	§2G1.1	31	18	1	5	0	4	3
§2B5.1	13	10	0	1	0	0	2	§2G1.2	0	0	0	0	0	0	0
§2B5.2	0	0	0	0	0	0	0	§2G1.3	173	99	5	12	1	27	29
§2B5.3	10	4	0	2	0	1	3	§2G2.1	375	140	4	8	0	112	111
§2B5.4	0	0	0	0	0	0	0	§2G2.2	697	276	39	11	0	166	205
§2B6.1	2	1	1	0	0	0	0	§2G2.3	0	0	0	0	0	0	0
§2C1.1	90	12	0	34	0	12	32	§2G2.4	0	0	0	0	0	0	0
§2C1.2	2	1	0	0	0	0	1	§2G2.5	0	0	0	0	0	0	0
§2C1.3	0	0	0	0	0	0	0	§2G2.6	1	1	0	0	0	0	0
§2C1.4	0	0	0	0	0	0	0	§2G3.1	16	9	4	0	0	0	3
§2C1.5	0	0	0	0	0	0	0	§2G3.2	0	0	0	0	0	0	0
§2C1.6	0	0	0	0	0	0	0	§2H1.1	27	11	1	5	0	6	4
§2C1.7	0	0	0	0	0	0	0	§2H1.2	0	0	0	0	0	0	0
§2C1.8	4	2	0	0	0	0	2	§2H1.3	0	0	0	0	0	0	0
§2D1.1	6,881	2,202	139	1,274	264	1,132	1,870	§2H1.4	0	0	0	0	0	0	0
§2D1.2	147	41	9	12	0	41	44	§2H1.5	0	0	0	0	0	0	0
§2D1.3	0	0	0	0	0	0	0	§2H2.1	4	3	0	0	0	0	1
§2D1.4	0	0	0	0	0	0	0	§2H3.1	0	0	0	0	0	0	0
§2D1.5	4	3	0	0	0	1	0	§2H3.2	0	0	0	0	0	0	0
§2D1.6	0	0	0	0	0	0	0	§2H3.3	0	0	0	0	0	0	0
§2D1.7	1	1	0	0	0	0	0	§2H4.1	9	2	0	3	0	1	3

Table 11 (cont.)

Guideline	Total	Within Guideline Range	Above Guideline Range	§5K1.1 Substantial Assistance	EDP Below Range	Gov't Below Range	Non-Gov't Below Range	Guideline	Total	Within Guideline Range	Above Guideline Range	§5K1.1 Substantial Assistance	EDP Below Range	Gov't Below Range	Non-Gov't Below Range
§2H4.2	0	0	0	0	0	0	0	§2M5.2	65	22	0	9	0	12	22
§2J1.1	0	0	0	0	0	0	0	§2M5.3	3	0	1	1	0	1	0
§2J1.2	48	20	2	6	0	7	13	§2M6.1	0	0	0	0	0	0	0
§2J1.3	8	1	0	0	0	3	4	§2M6.2	0	0	0	0	0	0	0
§2J1.4	4	3	1	0	0	0	0	§2N1.1	6	0	0	0	0	3	3
§2J1.5	1	1	0	0	0	0	0	§2N1.2	0	0	0	0	0	0	0
§2J1.6	15	9	2	0	0	1	3	§2N1.3	0	0	0	0	0	0	0
§2J1.7	0	0	0	0	0	0	0	§2N2.1	9	9	0	0	0	0	0
§2J1.8	0	0	0	0	0	0	0	§2N3.1	1	1	0	0	0	0	0
§2J1.9	0	0	0	0	0	0	0	§2P1.1	112	74	5	1	0	10	22
§2K1.1	0	0	0	0	0	0	0	§2P1.2	46	27	1	0	1	7	10
§2K1.2	0	0	0	0	0	0	0	§2P1.3	0	0	0	0	0	0	0
§2K1.3	3	1	0	0	0	1	1	§2P1.4	0	0	0	0	0	0	0
§2K1.4	29	16	5	3	0	3	2	§2Q1.1	0	0	0	0	0	0	0
§2K1.5	0	0	0	0	0	0	0	§2Q1.2	9	3	0	0	0	3	3
§2K1.6	0	0	0	0	0	0	0	§2Q1.3	4	3	0	0	0	0	1
§2K1.7	0	0	0	0	0	0	0	§2Q1.4	0	0	0	0	0	0	0
§2K2.1	3,789	1,857	219	186	4	434	1,089	§2Q1.5	0	0	0	0	0	0	0
§2K2.2	0	0	0	0	0	0	0	§2Q1.6	0	0	0	0	0	0	0
§2K2.3	0	0	0	0	0	0	0	§2Q2.1	54	43	1	0	0	4	6
§2K2.4 <sup>3</sup>	108	80	21	7	0	0	0	§2Q2.2	0	0	0	0	0	0	0
§2K2.5	5	5	0	0	0	0	0	§2R1.1	4	1	0	2	0	1	0
§2K2.6	0	0	0	0	0	0	0	§2S1.1	540	112	16	130	2	113	167
§2K3.1	0	0	0	0	0	0	0	§2S1.2	0	0	0	0	0	0	0
§2K3.2	0	0	0	0	0	0	0	§2S1.3	82	43	4	4	0	8	23
§2L1.1	1,415	896	116	51	160	49	143	§2S1.4	0	0	0	0	0	0	0
§2L1.2	10,093	8,461	591	12	331	90	608	§2T1.1	94	23	3	10	0	11	47
§2L1.3	0	0	0	0	0	0	0	§2T1.2	0	0	0	0	0	0	0
§2L2.1	28	15	1	4	0	1	7	§2T1.3	0	0	0	0	0	0	0
§2L2.2	330	295	21	1	2	4	7	§2T1.4	50	13	0	9	0	8	20
§2L2.3	0	0	0	0	0	0	0	§2T1.5	0	0	0	0	0	0	0
§2L2.4	0	0	0	0	0	0	0	§2T1.6	33	7	0	3	0	5	18
§2L2.5	0	0	0	0	0	0	0	§2T1.7	0	0	0	0	0	0	0
§2M1.1	0	0	0	0	0	0	0	§2T1.8	0	0	0	0	0	0	0
§2M2.1	0	0	0	0	0	0	0	§2T1.9	0	0	0	0	0	0	0
§2M2.2	0	0	0	0	0	0	0	§2T2.1	0	0	0	0	0	0	0
§2M2.3	0	0	0	0	0	0	0	§2T2.2	1	1	0	0	0	0	0
§2M2.4	0	0	0	0	0	0	0	§2T3.1	3	2	1	0	0	0	0
§2M3.1	1	0	0	0	0	0	1	§2T3.2	0	0	0	0	0	0	0
§2M3.2	2	1	0	0	0	0	1	§2T4.1	0	0	0	0	0	0	0
§2M3.3	1	0	0	0	0	0	1	§2X1.1	3	0	0	0	0	2	1
§2M3.4	0	0	0	0	0	0	0	§2X2.1	0	0	0	0	0	0	0
§2M3.5	0	0	0	0	0	0	0	§2X3.1	31	9	2	8	0	5	7
§2M3.6	0	0	0	0	0	0	0	§2X4.1	65	31	2	7	1	15	9
§2M3.7	0	0	0	0	0	0	0	§2X5.1	0	0	0	0	0	0	0
§2M3.8	0	0	0	0	0	0	0	§2X5.2	61	60	1	0	0	0	0
§2M3.9	0	0	0	0	0	0	0	§2X6.1	1	1	0	0	0	0	0
§2M4.1	0	0	0	0	0	0	0	§2X7.1	1	0	0	1	0	0	0
§2M5.1	15	2	0	6	0	1	6	§2X7.2	0	0	0	0	0	0	0
<b>TOTAL</b>									<b>29,865</b>	<b>16,794</b>	<b>1,418</b>	<b>2,280</b>	<b>770</b>	<b>2,877</b>	<b>5,726</b>

<sup>1</sup> Of the 32,586 cases, 2,721 were excluded due to one or both of the following reasons: information was missing from the submitted documents that prevented the comparison of the sentence and the guideline range (196) or missing guideline applied (2,703). Descriptions of variables used in this table are provided in Appendix A.

<sup>2</sup> In these cases, the sentenced individual was convicted of violating 18 U.S.C. § 1028A (Aggravated Identity Theft) as the only count or counts of conviction. The *Guidelines Manual* provides punishment for this type of offense under §2B1.6.

<sup>3</sup> In these cases, the sentenced individual was convicted of violating 18 U.S.C. § 924(c) (Use of Firearm, Armor-Piercing Ammunition, or Explosives During or in Relation to Certain Crimes) as the only count or counts of conviction. The *Guidelines Manual* provides punishment for this type of offense under §2K2.4.

SOURCE: U.S. Sentencing Commission, Preliminary 2026 Datafile, USSCFY26 (October 1, 2025, through March 31, 2026).

Table 12

**TYPE OF PLEA**  
**BY SENTENCE IMPOSED RELATIVE TO THE GUIDELINE RANGE<sup>1</sup>**  
**2nd Quarter 2026 Preliminary Cumulative Data (October 1, 2025, through March 31, 2026)**

	TOTAL CASES	Non-Binding Plea		Binding Plea		Plea without Agreement		Trial		Missing	
		N	%	N	%	N	%	N	%	N	%
<b>TOTAL CASES</b>	<b>25,598</b>	<b>11,993</b>	<b>46.9</b>	<b>3,424</b>	<b>13.4</b>	<b>8,707</b>	<b>34.0</b>	<b>590</b>	<b>2.3</b>	<b>884</b>	<b>3.5</b>
<b>Within Guideline Range</b>	<b>15,366</b>	<b>5,641</b>	<b>36.7</b>	<b>1,779</b>	<b>11.6</b>	<b>6,918</b>	<b>45.0</b>	<b>293</b>	<b>1.9</b>	<b>735</b>	<b>4.8</b>
Within Range	13,883	5,084	36.6	996	7.2	6,818	49.1	293	2.1	692	5.0
EDP Within Range	1,483	557	37.6	783	52.8	100	6.7	0	0.0	43	2.9
<b>Above Guideline Range</b>	<b>1,117</b>	<b>344</b>	<b>30.8</b>	<b>132</b>	<b>11.8</b>	<b>591</b>	<b>52.9</b>	<b>33</b>	<b>3.0</b>	<b>17</b>	<b>1.5</b>
Above Range	1,097	339	30.9	128	11.7	585	53.3	33	3.0	12	1.1
EDP Above Range	20	5	25.0	4	20.0	6	30.0	0	0.0	5	25.0
<b>§5K1.1 Substantial Assistance</b>	<b>1,833</b>	<b>1,629</b>	<b>88.9</b>	<b>122</b>	<b>6.7</b>	<b>65</b>	<b>3.5</b>	<b>1</b>	<b>0.1</b>	<b>16</b>	<b>0.9</b>
§5K1.1 Substantial Assistance Only	754	668	88.6	42	5.6	34	4.5	0	0.0	10	1.3
§5K1.1 Substantial Assistance and EDP	24	13	54.2	10	41.7	1	4.2	0	0.0	0	0.0
§5K1.1 Substantial Assistance and Other Below Range	1,055	948	89.9	70	6.6	30	2.8	1	0.1	6	0.6
<b>Below Guideline Range</b>	<b>7,282</b>	<b>4,379</b>	<b>60.1</b>	<b>1,391</b>	<b>19.1</b>	<b>1,133</b>	<b>15.6</b>	<b>263</b>	<b>3.6</b>	<b>116</b>	<b>1.6</b>
EDP Below Range	471	220	46.7	230	48.8	6	1.3	0	0.0	15	3.2
Government Below Range	2,301	1,306	56.8	839	36.5	90	3.9	49	2.1	17	0.7
Non-Government Below Range	4,510	2,853	63.3	322	7.1	1,037	23.0	214	4.7	84	1.9

<sup>1</sup> This table includes cases in which the court submitted a statement of reasons form with a revision date of November 2025. Descriptions of variables used in this table are provided in Appendix A.

SOURCE: U.S. Sentencing Commission, Preliminary 2026 Datafile, USSCFY26 (October 1, 2025, through March 31, 2026).

Table 13

**EXTENT OF ABOVE GUIDELINE RANGE  
BY TYPE OF CRIME<sup>1</sup>**

**2nd Quarter 2026 Preliminary Cumulative Data (October 1, 2025, through March 31, 2026)**

TYPE OF CRIME	N	Mean			Median		
		Sentence In Months	Increase In Months	Percent Increase	Sentence In Months	Increase In Months	Percent Increase
<b>TOTAL</b>	<b>1,417</b>	<b>64</b>	<b>19</b>	<b>64.5</b>	<b>36</b>	<b>9</b>	<b>40.0</b>
Administration of Justice	9	27	12	130.2	30	12	100.0
Antitrust	0	--	--	--	--	--	--
Arson	5	79	34	83.3	73	30	100.0
Assault	36	110	36	67.6	79	19	41.9
Bribery/Corruption	0	--	--	--	--	--	--
Burglary/Trespass	3	55	26	100.7	48	11	29.7
Child Pornography	41	182	46	32.9	175	30	24.8
Commercialized Vice	1	--	--	--	--	--	--
Drug Possession	0	--	--	--	--	--	--
Drug Trafficking	148	129	31	58.5	108	15	24.6
Environmental	1	--	--	--	--	--	--
Extortion/Racketeering	3	74	25	52.6	72	21	41.2
Firearms	240	84	25	56.4	72	18	33.3
Food and Drug	0	--	--	--	--	--	--
Forgery/Counter/Copyright	0	--	--	--	--	--	--
Fraud/Theft/Embezzlement	63	71	25	100.9	48	12	52.2
Immigration	733	23	8	65.8	12	4	50.0
Individual Rights	1	--	--	--	--	--	--
Kidnapping	1	--	--	--	--	--	--
Manslaughter	14	120	47	75.0	104	37	58.0
Money Laundering	20	71	21	91.6	60	16	48.2
Murder	6	372	74	28.0	383	48	16.3
National Defense	1	--	--	--	--	--	--
Obscenity/Other Sex Offenses	13	59	29	123.1	48	16	75.0
Prison Offenses	6	33	13	70.8	29	8	55.0
Robbery	36	184	41	32.8	182	33	26.7
Sexual Abuse	13	189	48	49.4	180	36	22.3
Stalking/Harassing	17	68	21	59.0	60	16	36.6
Tax	4	46	9	26.0	51	6	23.0
Other	2	--	--	--	--	--	--

<sup>1</sup> Of the 32,586 cases, in 1,433 the sentenced individual received an Above Guideline Range sentence. Due to an inability to calculate the extent of departure for cases with a sentence of life, five cases were excluded from this table. Also, 11 cases were excluded due to several logical criteria. Sentences greater than 470 months and probation were included in the sentence average computations as 470 months and zero months, respectively. The information in this table includes conditions of confinement as described in USSG §5C1.1. Descriptions of variables used in this table are provided in Appendix A.

Table 14

**EXTENT OF §5K1.1 SUBSTANTIAL ASSISTANCE  
BY TYPE OF CRIME<sup>1</sup>**

**2nd Quarter 2026 Preliminary Cumulative Data (October 1, 2025, through March 31, 2026)**

TYPE OF CRIME	N	Mean			Median		
		Sentence In Months	Decrease In Months	Percent Decrease	Sentence In Months	Decrease In Months	Percent Decrease
<b>TOTAL</b>	<b>2,238</b>	<b>52</b>	<b>51</b>	<b>54.6</b>	<b>36</b>	<b>35</b>	<b>50.0</b>
Administration of Justice	13	2	14	93.0	0	15	100.0
Antitrust	2	--	--	--	--	--	--
Arson	3	31	29	48.3	24	36	60.0
Assault	15	54	71	47.1	50	28	47.4
Bribery/Corruption	60	12	31	73.0	7	24	80.0
Burglary/Trespass	1	--	--	--	--	--	--
Child Pornography	11	69	48	40.0	60	34	42.9
Commercialized Vice	4	3	11	83.2	0	7	99.8
Drug Possession	1	--	--	--	--	--	--
Drug Trafficking	1,272	68	62	50.3	60	50	46.6
Environmental	0	--	--	--	--	--	--
Extortion/Racketeering	4	5	28	83.7	4	24	86.5
Firearms	195	30	32	55.7	20	21	50.3
Food and Drug	0	--	--	--	--	--	--
Forgery/Counter/Copyright	3	11	20	62.2	3	25	90.6
Fraud/Theft/Embezzlement	316	18	27	65.6	12	21	66.7
Immigration	67	16	16	50.4	12	12	42.7
Individual Rights	8	35	25	52.4	29	21	52.8
Kidnapping	6	141	86	34.6	159	55	27.7
Manslaughter	0	--	--	--	--	--	--
Money Laundering	131	41	51	58.0	24	31	50.0
Murder	15	136	96	48.2	108	69	48.9
National Defense	16	25	24	55.3	17	19	50.9
Obscenity/Other Sex Offenses	1	--	--	--	--	--	--
Prison Offenses	1	--	--	--	--	--	--
Robbery	45	70	70	51.7	66	45	49.5
Sexual Abuse	23	99	73	43.6	84	52	40.0
Stalking/Harassing	2	--	--	--	--	--	--
Tax	22	9	21	79.0	3	18	93.4
Other	1	--	--	--	--	--	--

<sup>1</sup> Of the 32,586 cases, in 2,284 the sentenced individual received a §5K1.1 Substantial Assistance sentence. Of these, 46 cases were excluded due to several logical criteria. Sentences greater than 470 months and probation were included in the sentence average computations as 470 months and zero months, respectively. The information in this table includes conditions of confinement as described in USSG §5C1.1. Descriptions of variables used in this table are provided in Appendix A.

Table 15

**EXTENT OF EDP BELOW RANGE  
BY TYPE OF CRIME<sup>1</sup>**

**2nd Quarter 2026 Preliminary Cumulative Data (October 1, 2025, through March 31, 2026)**

TYPE OF CRIME	N	Mean			Median		
		Sentence In Months	Decrease In Months	Percent Decrease	Sentence In Months	Decrease In Months	Percent Decrease
<b>TOTAL</b>	<b>776</b>	<b>12</b>	<b>11</b>	<b>46.8</b>	<b>10</b>	<b>6</b>	<b>40.0</b>
Administration of Justice	1	--	--	--	--	--	--
Antitrust	0	--	--	--	--	--	--
Arson	0	--	--	--	--	--	--
Assault	0	--	--	--	--	--	--
Bribery/Corruption	0	--	--	--	--	--	--
Burglary/Trespass	0	--	--	--	--	--	--
Child Pornography	0	--	--	--	--	--	--
Commercialized Vice	0	--	--	--	--	--	--
Drug Possession	0	--	--	--	--	--	--
Drug Trafficking	262	18	20	49.2	16	12	45.6
Environmental	0	--	--	--	--	--	--
Extortion/Racketeering	0	--	--	--	--	--	--
Firearms	4	16	12	47.1	17	10	34.7
Food and Drug	0	--	--	--	--	--	--
Forgery/Counter/Copyright	0	--	--	--	--	--	--
Fraud/Theft/Embezzlement	3	5	16	76.1	0	10	99.7
Immigration	501	9	6	45.3	6	5	38.0
Individual Rights	0	--	--	--	--	--	--
Kidnapping	0	--	--	--	--	--	--
Manslaughter	0	--	--	--	--	--	--
Money Laundering	2	--	--	--	--	--	--
Murder	0	--	--	--	--	--	--
National Defense	0	--	--	--	--	--	--
Obscenity/Other Sex Offenses	0	--	--	--	--	--	--
Prison Offenses	1	--	--	--	--	--	--
Robbery	0	--	--	--	--	--	--
Sexual Abuse	2	--	--	--	--	--	--
Stalking/Harassing	0	--	--	--	--	--	--
Tax	0	--	--	--	--	--	--
Other	0	--	--	--	--	--	--

<sup>1</sup> Of the 32,586 cases, in 780 the sentenced individual received an EDP Below Range sentence. Of these, four cases were excluded due to several logical criteria. Sentences greater than 470 months and probation were included in the sentence average computations as 470 months and zero months, respectively. The information in this table includes conditions of confinement as described in USSG §5C1.1. Descriptions of variables used in this table are provided in Appendix A.

Table 16

**EXTENT OF GOVERNMENT BELOW RANGE  
BY TYPE OF CRIME<sup>1</sup>**

**2nd Quarter 2026 Preliminary Cumulative Data (October 1, 2025, through March 31, 2026)**

TYPE OF CRIME	N	Mean			Median		
		Sentence In Months	Decrease In Months	Percent Decrease	Sentence In Months	Decrease In Months	Percent Decrease
<b>TOTAL</b>	<b>2,833</b>	<b>59</b>	<b>38</b>	<b>46.8</b>	<b>38</b>	<b>22</b>	<b>40.5</b>
Administration of Justice	54	2	11	83.4	0	8	99.8
Antitrust	1	--	--	--	--	--	--
Arson	2	--	--	--	--	--	--
Assault	63	27	22	54.2	18	12	50.0
Bribery/Corruption	15	13	17	65.6	9	12	55.4
Burglary/Trespass	4	14	13	64.9	8	12	73.3
Child Pornography	163	81	57	41.9	72	54	38.5
Commercialized Vice	3	2	9	83.3	0	10	100.0
Drug Possession	1	--	--	--	--	--	--
Drug Trafficking	1,148	79	51	41.9	64	37	36.8
Environmental	9	2	13	88.6	0	9	100.0
Extortion/Racketeering	3	29	18	46.6	15	15	62.5
Firearms	445	43	23	43.3	30	16	35.1
Food and Drug	3	14	22	63.5	12	21	63.6
Forgery/Counter/Copyright	1	--	--	--	--	--	--
Fraud/Theft/Embezzlement	299	19	21	63.0	12	12	61.7
Immigration	187	10	9	53.2	6	6	46.7
Individual Rights	6	43	20	78.2	0	12	100.0
Kidnapping	9	148	67	32.5	120	69	28.6
Manslaughter	5	19	13	42.3	24	9	27.3
Money Laundering	110	57	45	49.6	41	24	42.8
Murder	15	149	81	37.0	120	52	28.6
National Defense	15	26	36	54.0	18	22	51.4
Obscenity/Other Sex Offenses	13	10	12	59.2	12	12	59.9
Prison Offenses	20	11	7	43.1	9	4	36.9
Robbery	79	94	37	31.5	72	31	26.8
Sexual Abuse	107	154	71	32.3	160	59	28.6
Stalking/Harassing	26	21	11	55.7	9	9	50.3
Tax	24	9	16	69.5	7	12	70.5
Other	3	20	12	74.0	0	12	100.0

<sup>1</sup> Of the 32,586 cases, in 2,971 the sentenced individual received a Government Below Range sentence. Due to an inability to calculate the extent of departure for cases with a guideline minimum of life, 72 cases were excluded from this table. Also, 66 cases were excluded due to several logical criteria. Sentences greater than 470 months and probation were included in the sentence average computations as 470 months and zero months, respectively. The information in this table includes conditions of confinement as described in USSG §5C1.1. Descriptions of variables used in this table are provided in Appendix A.

Table 17

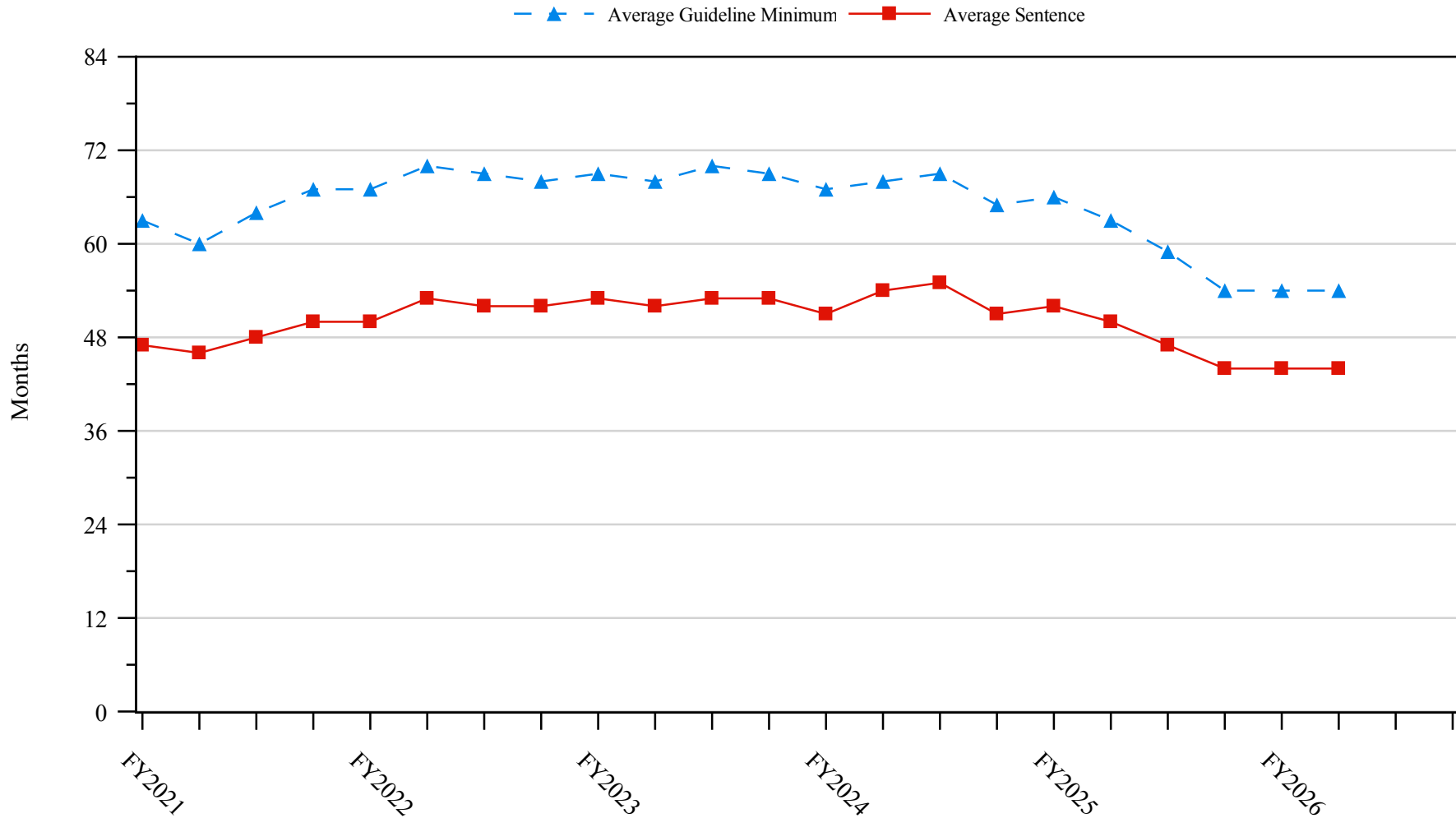
**EXTENT OF NON-GOVERNMENT BELOW RANGE  
BY TYPE OF CRIME<sup>1</sup>**

**2nd Quarter 2026 Preliminary Cumulative Data (October 1, 2025, through March 31, 2026)**

TYPE OF CRIME	N	Mean			Median		
		Sentence In Months	Decrease In Months	Percent Decrease	Sentence In Months	Decrease In Months	Percent Decrease
<b>TOTAL</b>	<b>5,608</b>	<b>52</b>	<b>24</b>	<b>40.9</b>	<b>26</b>	<b>13</b>	<b>31.8</b>
Administration of Justice	66	8	9	67.0	4	8	70.3
Antitrust	0	--	--	--	--	--	--
Arson	2	--	--	--	--	--	--
Assault	87	51	24	40.8	27	13	33.3
Bribery/Corruption	41	22	23	59.5	12	15	58.3
Burglary/Trespass	3	32	9	21.2	36	10	21.7
Child Pornography	196	97	44	32.1	89	35	27.6
Commercialized Vice	9	8	11	77.2	0	10	100.0
Drug Possession	0	--	--	--	--	--	--
Drug Trafficking	1,887	84	35	33.8	70	22	26.6
Environmental	10	1	6	80.8	0	6	100.0
Extortion/Racketeering	13	16	14	37.5	15	8	28.6
Firearms	1,086	34	16	40.6	24	12	30.0
Food and Drug	3	41	12	26.2	30	11	26.8
Forgery/Counter/Copyright	5	10	20	68.6	3	15	75.0
Fraud/Theft/Embezzlement	666	21	15	55.9	12	10	49.8
Immigration	807	12	8	42.8	8	6	33.3
Individual Rights	8	28	11	48.4	15	10	27.3
Kidnapping	10	128	71	33.8	120	56	40.0
Manslaughter	7	29	26	53.9	24	27	42.8
Money Laundering	181	45	28	47.5	24	18	42.5
Murder	12	137	67	34.9	117	31	19.2
National Defense	33	32	18	40.3	30	16	34.8
Obscenity/Other Sex Offenses	51	11	8	43.0	12	6	33.3
Prison Offenses	30	9	8	47.3	7	6	36.0
Robbery	154	92	28	26.3	90	20	20.7
Sexual Abuse	106	188	67	27.7	197	52	25.9
Stalking/Harassing	41	13	10	49.8	8	7	40.7
Tax	85	10	12	65.4	6	12	66.5
Other	9	1	8	92.5	0	12	100.0

<sup>1</sup> Of the 32,586 cases, in 5,786 the sentenced individual received a Non-Government Below Range sentence. Due to an inability to calculate the extent of departure for cases with a guideline minimum of life, 70 cases were excluded from this table. Also, 108 cases were excluded due to several logical criteria. Sentences greater than 470 months and probation were included in the sentence average computations as 470 months and zero months, respectively. The information in this table includes conditions of confinement as described in USSG §5C1.1. Descriptions of variables used in this table are provided in Appendix A.

**Figure 3**  
**SENTENCE LENGTH AND GUIDELINE MINIMUM QUARTERLY DATA**  
**FOR SENTENCED INDIVIDUALS<sup>1</sup>**  
**Fiscal Years 2021 - 2025,**  
**2nd Quarter 2026 Preliminary Cumulative Data (October 1, 2025, through March 31, 2026)**



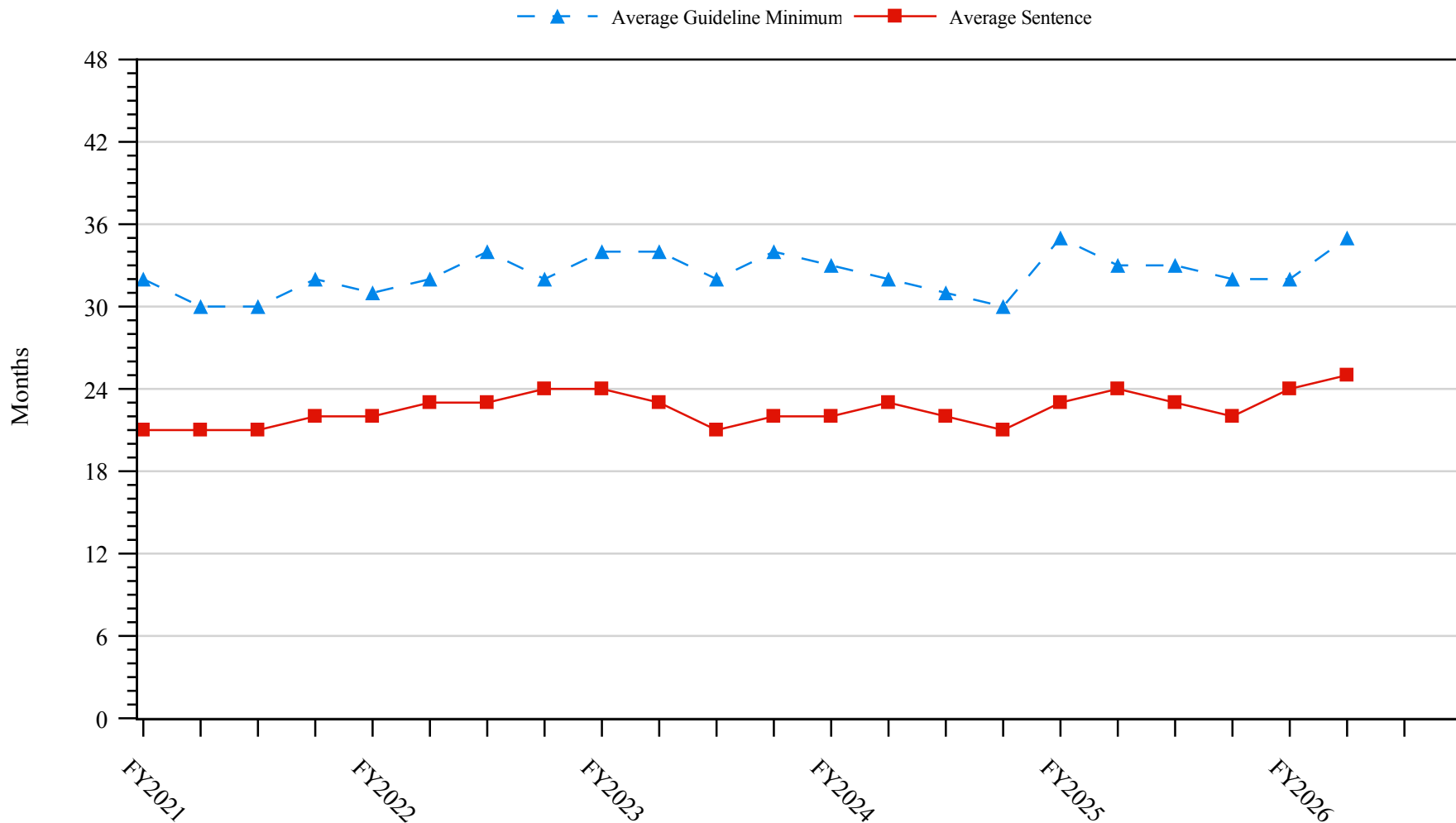
<sup>1</sup> Cases with guideline minimums of life or probation were included in the guideline minimum average computations as 470 months and zero months, respectively. Cases with sentences of 470 months or greater (including life) or probation were included in the sentence average computations as 470 months and zero months, respectively. The information presented in this figure includes conditions of confinement as described in USSG §5C1.1. Guideline minimums account for applicable statutory mandatory penalties. Descriptions of variables used in this figure are provided in Appendix A.

SOURCE: U.S. Sentencing Commission, 2021 - 2025 Datafiles, USSCFY21 - USSCFY25, and Preliminary Data from USSCFY26 (October 1, 2025, through March 31, 2026).

Figure 4

**SENTENCE LENGTH AND GUIDELINE MINIMUM QUARTERLY DATA  
FOR INDIVIDUALS SENTENCED UNDER §2B1.1 (THEFT, PROPERTY DESTRUCTION, AND FRAUD)<sup>1</sup>**

**Fiscal Years 2021 - 2025,  
2nd Quarter 2026 Preliminary Cumulative Data (October 1, 2025, through March 31, 2026)**

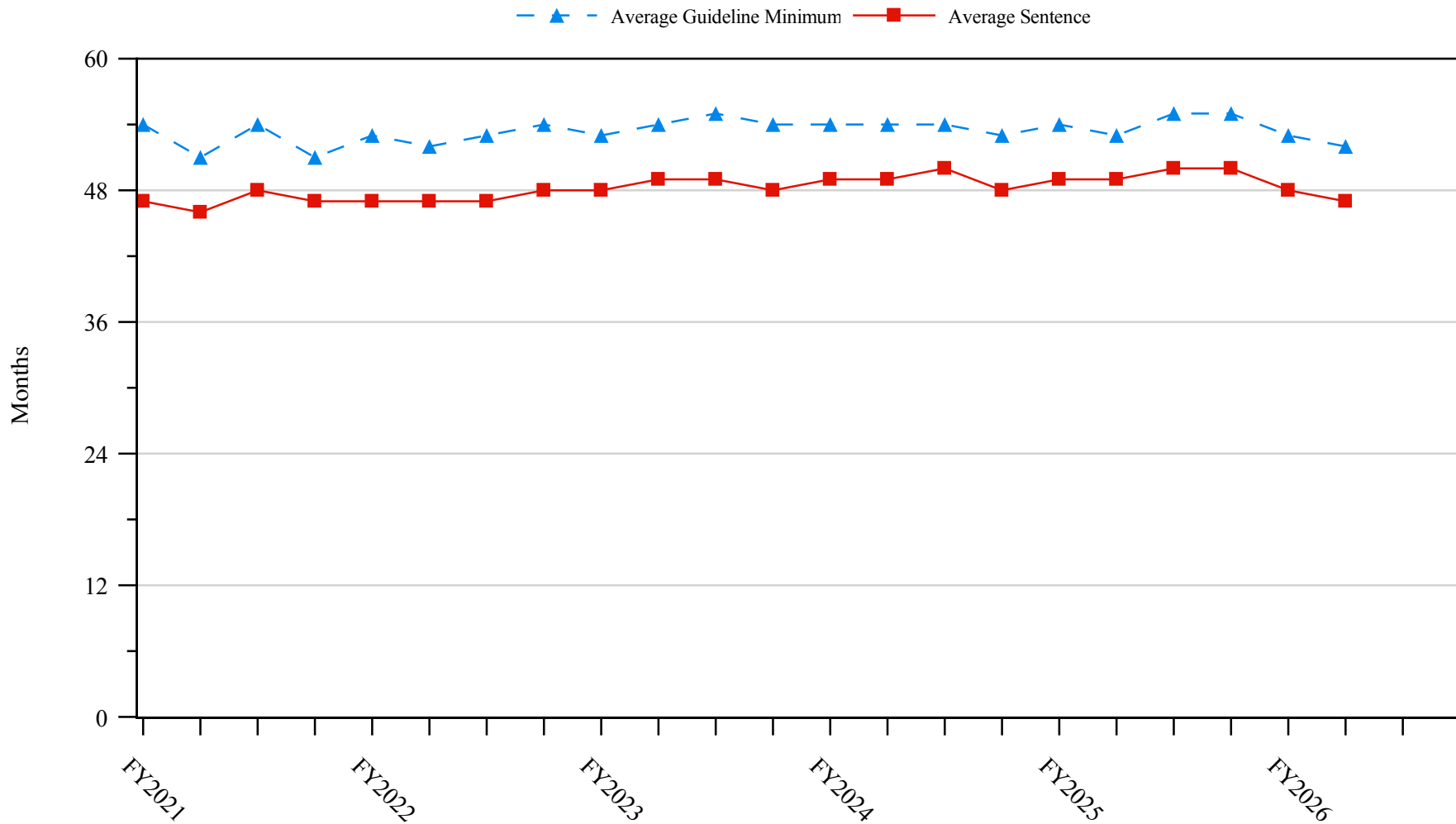


<sup>1</sup> Figure includes only cases with a primary sentencing guideline of USSG §2B1.1 (Larceny, Embezzlement, and Other Forms of Theft; Offenses Involving Stolen Property; Property Damage or Destruction; Fraud and Deceit; Forgery; Offenses Involving Altered or Counterfeit Instruments Other than Counterfeit Bearer Obligations of the United States). Additionally, cases with an amendment year prior to 2001 were excluded from this figure because prior to this time fraud cases were reported separately as USSG §2F1.1. Cases with guideline minimums of life or probation were included in the guideline minimum average computations as 470 months and zero months, respectively. Cases with sentences of 470 months or greater (including life) or probation were included in the sentence average computations as 470 months and zero months, respectively. The information presented in this figure includes conditions of confinement as described in USSG §5C1.1. Guideline minimums account for applicable statutory mandatory penalties. Descriptions of variables used in this figure are provided in Appendix A.

SOURCE: U.S. Sentencing Commission, 2021 - 2025 Datafiles, USSCFY21 - USSCFY25, and Preliminary Data from USSCFY26 (October 1, 2025, through March 31, 2026).

**Figure 5**

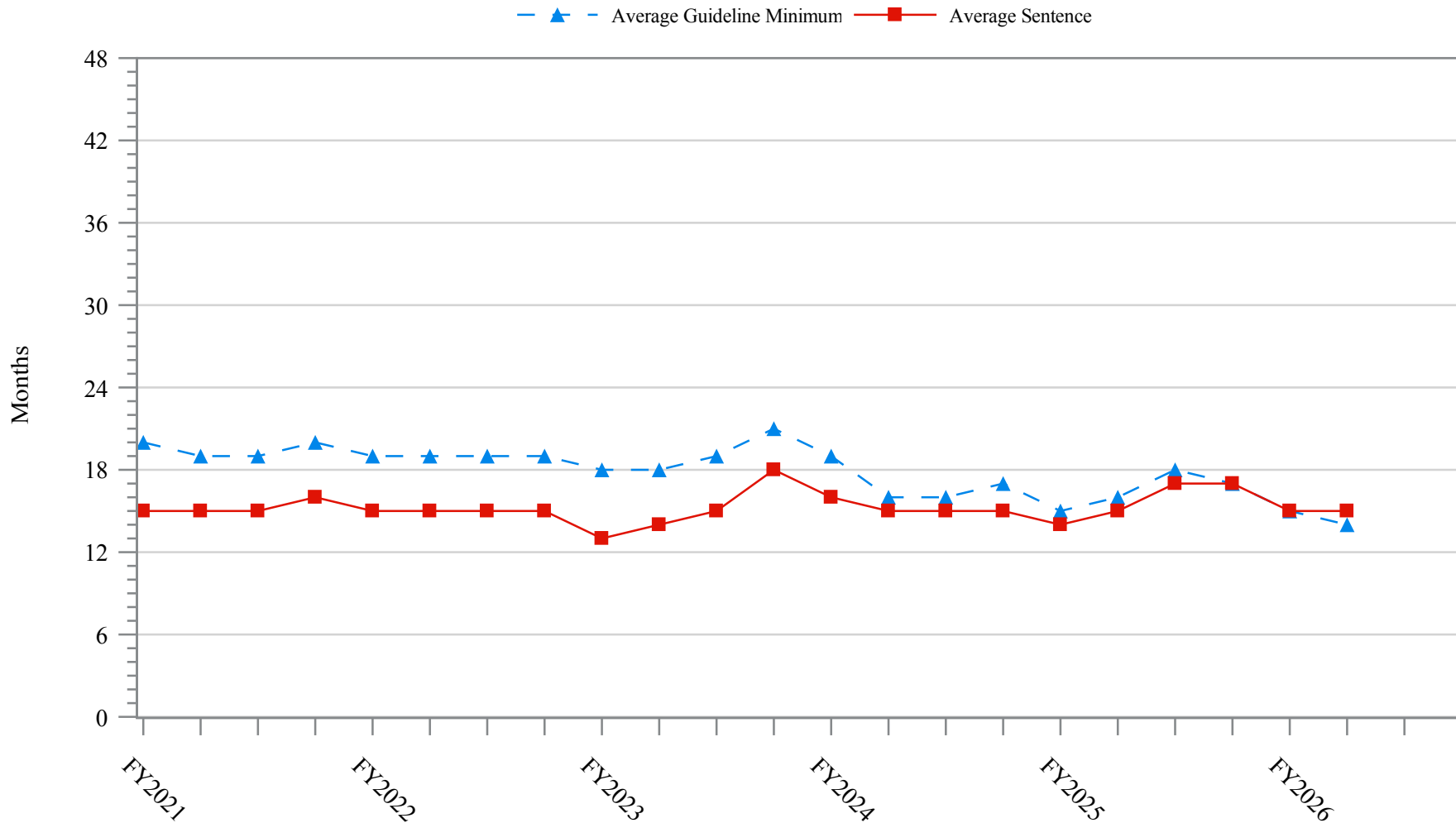
**SENTENCE LENGTH AND GUIDELINE MINIMUM QUARTERLY DATA  
FOR INDIVIDUALS SENTENCED UNDER §2K2.1 (UNLAWFUL POSSESSION OF OR TRANSACTION IN FIREARMS)<sup>1</sup>  
Fiscal Years 2021 - 2025,  
2nd Quarter 2026 Preliminary Cumulative Data (October 1, 2025, through March 31, 2026)**



<sup>1</sup> Figure includes only cases with a primary sentencing guideline of USSG §2K2.1 (Unlawful Receipt, Possession, or Transportation of Firearms or Ammunition; Prohibited Transactions Involving Firearms or Ammunition). Cases with guideline minimums of life or probation were included in the guideline minimum average computations as 470 months and zero months, respectively. Cases with sentences of 470 months or greater (including life) or probation were included in the sentence average computations as 470 months and zero months, respectively. The information presented in this figure includes conditions of confinement as described in USSG §5C1.1. Guideline minimums account for applicable statutory mandatory penalties. Descriptions of variables used in this figure are provided in Appendix A.

SOURCE: U.S. Sentencing Commission, 2021 - 2025 Datafiles, USSCFY21 - USSCFY25, and Preliminary Data from USSCFY26 (October 1, 2025, through March 31, 2026).

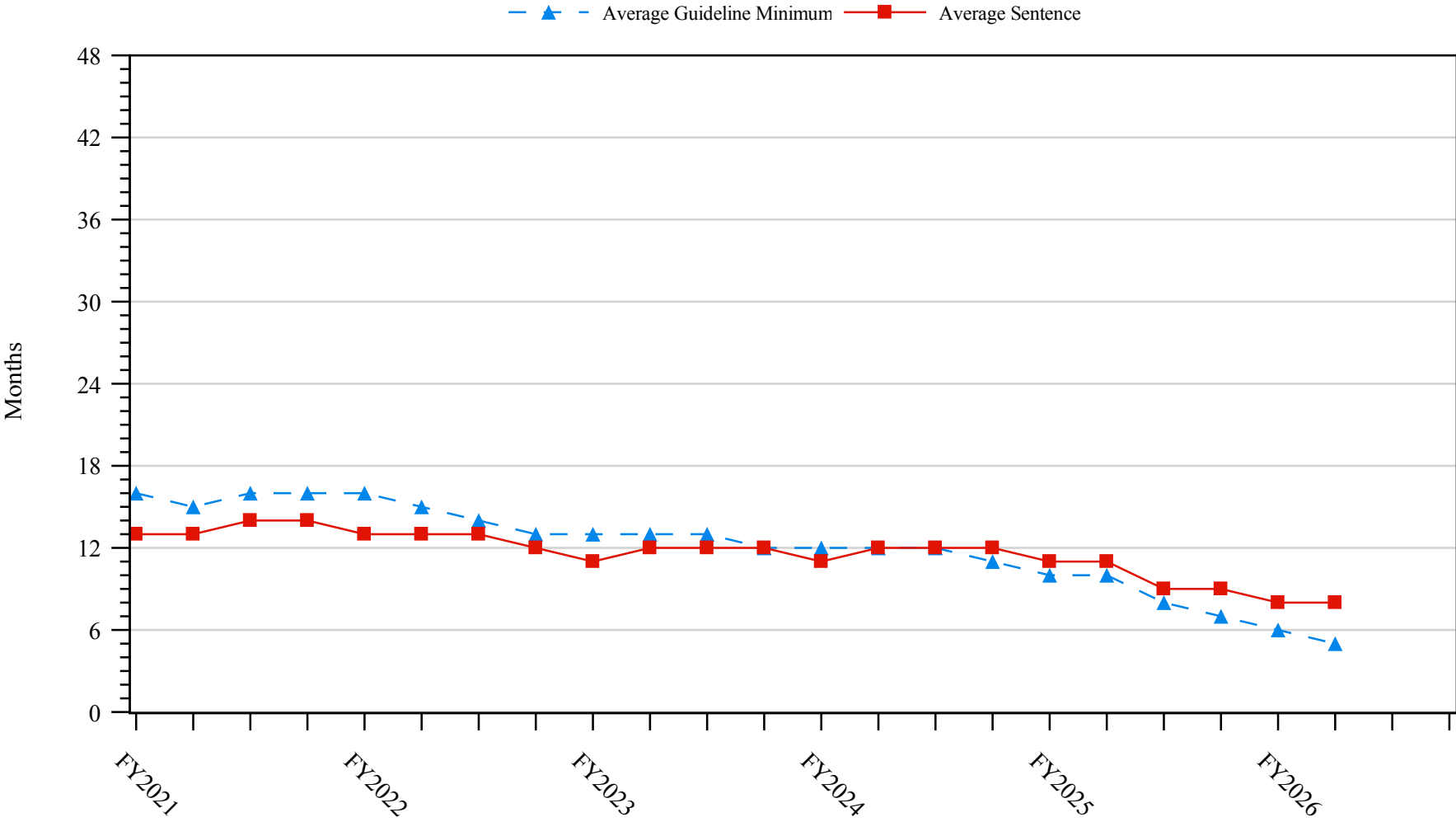
**Figure 6**  
**SENTENCE LENGTH AND GUIDELINE MINIMUM QUARTERLY DATA**  
**FOR INDIVIDUALS SENTENCED UNDER §2L1.1 (ALIEN SMUGGLING)<sup>1</sup>**  
**Fiscal Years 2021 - 2025,**  
**2nd Quarter 2026 Preliminary Cumulative Data (October 1, 2025, through March 31, 2026)**



<sup>1</sup> Figure includes only cases with a primary sentencing guideline of USSG §2L1.1 (Smuggling, Transporting, or Harboring an Unlawful Alien). Cases with guideline minimums of life or probation were included in the guideline minimum average computations as 470 months and zero months, respectively. Cases with sentences of 470 months or greater (including life) or probation were included in the sentence average computations as 470 months and zero months, respectively. The information presented in this figure includes conditions of confinement as described in USSG §5C1.1. Guideline minimums account for applicable statutory mandatory penalties. Descriptions of variables used in this figure are provided in Appendix A.

**Figure 7**

**SENTENCE LENGTH AND GUIDELINE MINIMUM QUARTERLY DATA  
FOR INDIVIDUALS SENTENCED UNDER §2L1.2 (UNLAWFUL ENTERING OR REMAINING IN THE UNITED STATES)<sup>1</sup>  
Fiscal Years 2021 - 2025,  
2nd Quarter 2026 Preliminary Cumulative Data (October 1, 2025, through March 31, 2026)**

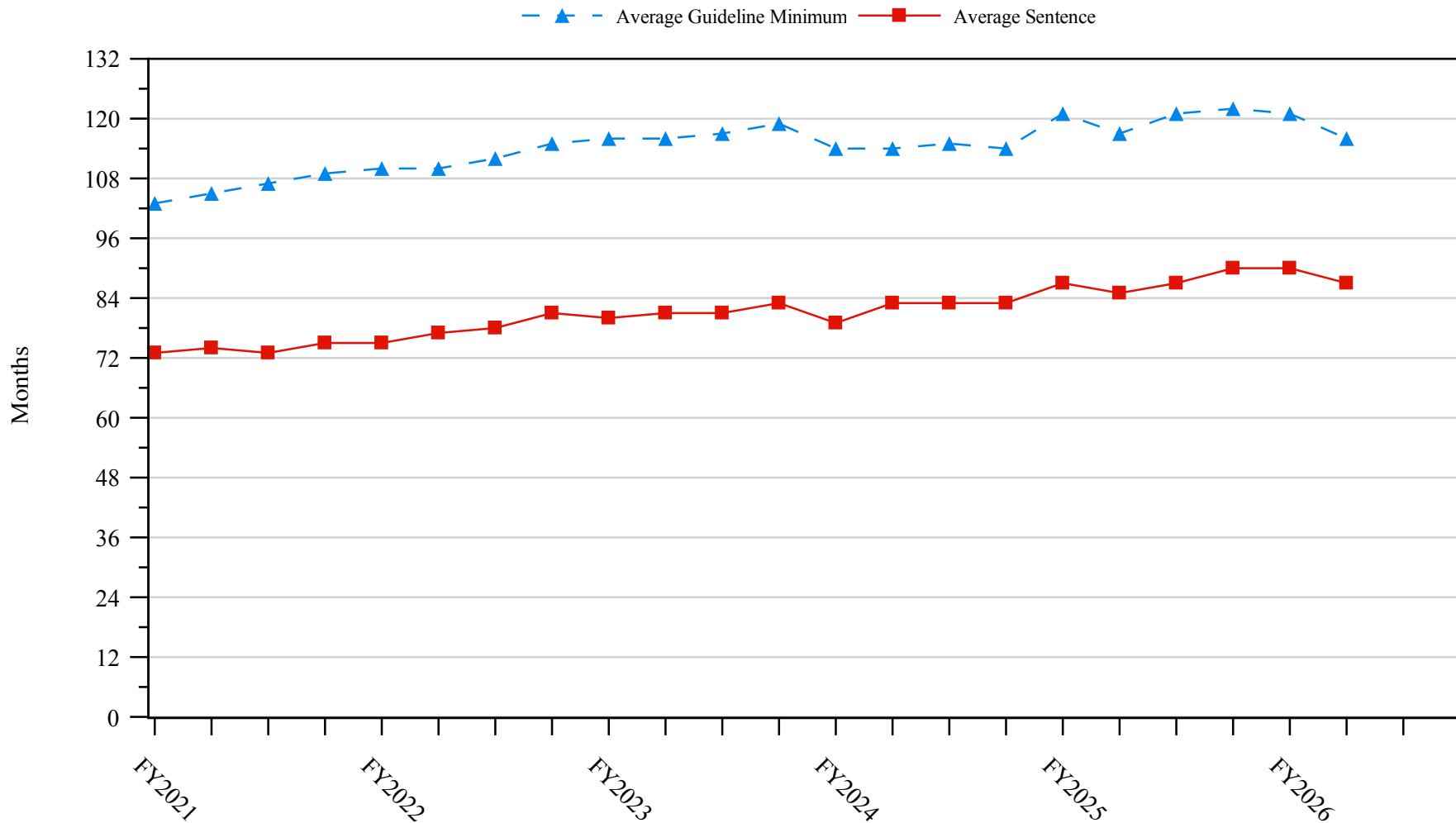


<sup>1</sup> Figure includes only cases with a primary sentencing guideline of USSG §2L1.2 (Unlawful Entering or Remaining in the United States). Cases with guideline minimums of life or probation were included in the guideline minimum average computations as 470 months and zero months, respectively. Cases with sentences of 470 months or greater (including life) or probation were included in the sentence average computations as 470 months and zero months, respectively. The information presented in this figure includes conditions of confinement as described in USSG §5C1.1. Guideline minimums account for applicable statutory mandatory penalties. Descriptions of variables used in this figure are provided in Appendix A.

SOURCE: U.S. Sentencing Commission, 2021 - 2025 Datafiles, USSCFY21 - USSCFY25, and Preliminary Data from USSCFY26 (October 1, 2025, through March 31, 2026).

**Figure 8**

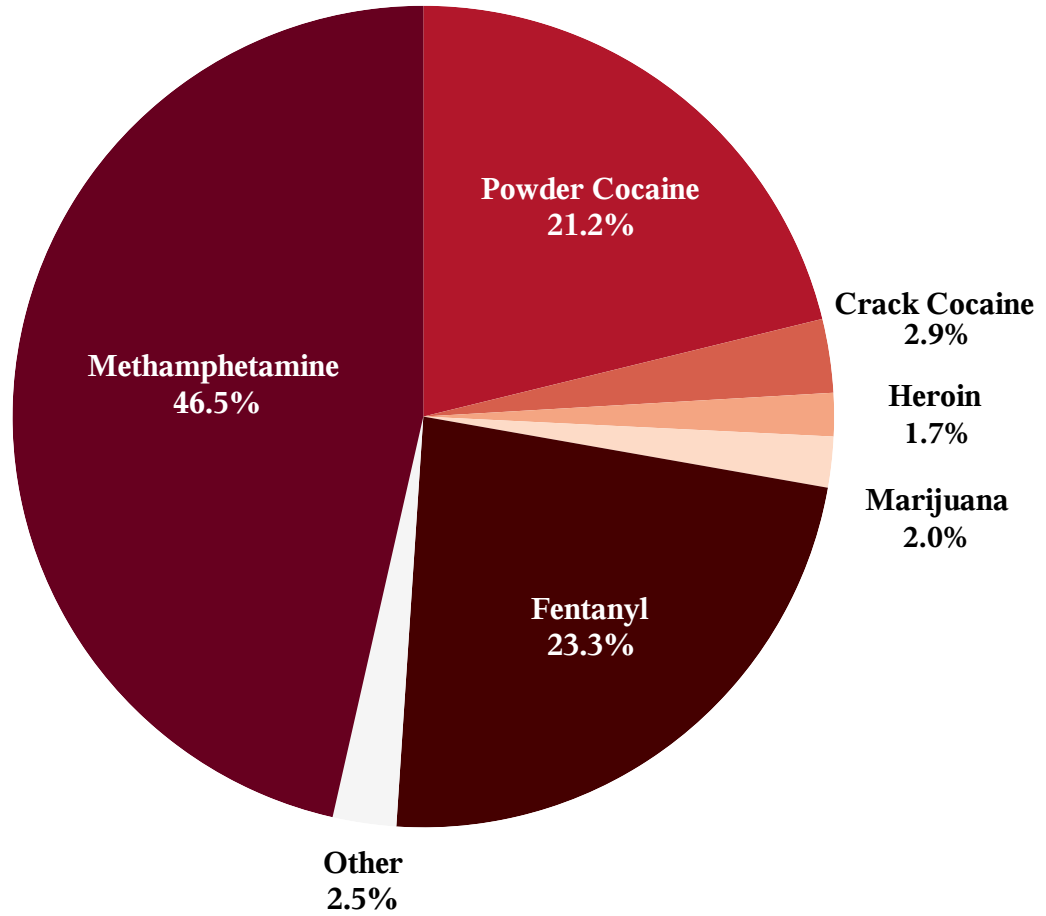
**SENTENCE LENGTH AND GUIDELINE MINIMUM QUARTERLY DATA  
FOR INDIVIDUALS SENTENCED UNDER §2D1.1 (UNLAWFUL DRUG TRAFFICKING OR MANUFACTURING)<sup>1</sup>  
Fiscal Years 2021 - 2025,  
2nd Quarter 2026 Preliminary Cumulative Data (October 1, 2025, through March 31, 2026)**



<sup>1</sup> Figure includes only cases with a primary sentencing guideline of USSG §2D1.1 (Unlawful Manufacturing, Importing, Exporting, or Trafficking (Including Possession with Intent to Commit These Offenses); Attempt or Conspiracy). Cases with guideline minimums of life or probation were included in the guideline minimum average computations as 470 months and zero months, respectively. Cases with sentences of 470 months or greater (including life) or probation were included in the sentence average computations as 470 months and zero months, respectively. The information presented in this figure includes conditions of confinement as described in USSG §5C1.1. Guideline minimums account for applicable statutory mandatory penalties. Descriptions of variables used in this figure are provided in Appendix A.

SOURCE: U.S. Sentencing Commission, 2021 - 2025 Datafiles, USSCFY21 - USSCFY25, and Preliminary Data from USSCFY26 (October 1, 2025, through March 31, 2026).

**Figure 9**  
**DISTRIBUTION OF PRIMARY DRUG TYPE**  
**IN FEDERAL DRUG CASES<sup>1,2</sup>**  
**2nd Quarter 2026 Preliminary Cumulative Data**  
**(October 1, 2025, through March 31, 2026)**

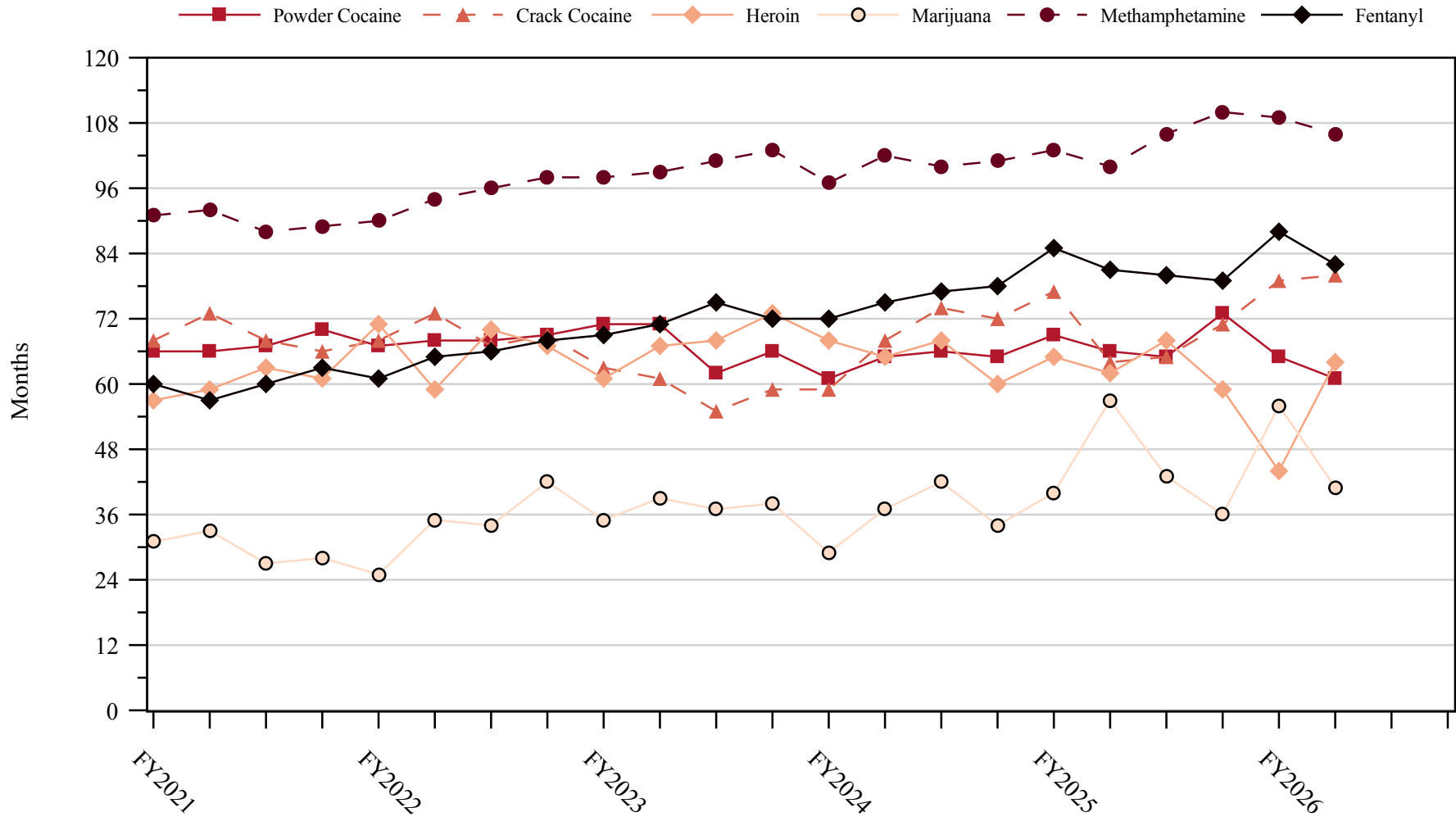


<sup>1</sup> Of the 32,586 cases, in 7,087 the individual was sentenced under USSG Chapter Two, Part D (Drugs). The 'Fentanyl' category includes both Fentanyl (N-phenyl-N-[1-(2-phenylethyl)-4-piperidinyl] Propanamide) and Fentanyl Analogue. Descriptions of variables used in this figure are provided in Appendix A.

<sup>2</sup> The 'Other' drug category includes the remaining primary drug types of which the following have more than 50 cases: Oxycodone/Oxycontin (54).

SOURCE: U.S. Sentencing Commission, Preliminary 2026 Datafile, USSCFY26 (October 1, 2025, through March 31, 2026).

**Figure 10**  
**SENTENCE LENGTH QUARTERLY DATA IN DRUG TRAFFICKING CASES**  
**BY MAJOR DRUG TYPE<sup>1</sup>**  
**Fiscal Years 2021 - 2025,**  
**2nd Quarter 2026 Preliminary Cumulative Data (October 1, 2025, through March 31, 2026)**



<sup>1</sup> Only individuals sentenced under §§2D1.1 (Drug Trafficking), 2D1.2 (Protected Locations), 2D1.5 (Continuing Criminal Enterprise), 2D1.6 (Use of a Communication Facility), 2D1.8 (Rent/Manage Drug Establishment), 2D1.10 (Endangering Human Life While Manufacturing), or 2D1.14 (Narco-Terrorism) are depicted in this figure. Sentences of 470 months or greater (including life) and probation were included in the sentence average computations as 470 months and zero months, respectively. The information in this figure includes conditions of confinement as described in USSG §5C1.1. Cases missing drug type or sentencing information were also excluded. Descriptions of variables used in this figure are provided in Appendix A.

## Appendix A

### Descriptions of Datafiles and Variables

#### Introduction

---

The Commission collects and analyzes data on federal sentences to support its various activities. As authorized by Congress, the Commission's numerous research responsibilities include (1) the establishment of a research and development program to serve as a clearinghouse and information center for the collection, preparation, and dissemination of information on federal sentencing practices; (2) the publication of data concerning the sentencing process; (3) the systematic collection and dissemination of information concerning sentences actually imposed and the relationship of such sentences to the factors set forth in section 3553(a) of title 18, United States Code; and (4) the systematic collection and dissemination of information regarding the effectiveness of sentences imposed.<sup>1</sup>

The Commission maintains a comprehensive, computerized data collection system which forms the basis for its clearinghouse of federal sentencing information and which contributes to the agency's research mission.

Pursuant to 28 U.S.C. § 994(w), the chief judge of each district is required to ensure that within 30 days of entry of judgment in a criminal case, the sentencing court submits a report of sentence to the Commission that includes (1) the judgment and commitment order; (2) the written statement of reasons; (3) any plea agreement; (4) the indictment or other charging document; (5) the presentence report; and (6) any other information the Commission requests. Information on minor and petty offenses are not reported to the Commission as the sentencing guidelines do not apply in those cases.<sup>2</sup> Cases in which a sentence of death was imposed also are not available in this dataset for this same reason.<sup>3</sup>

Standard information on each case is extracted from sentencing documents received and computerized for analysis. Note that for all tables, total percentages may not add up to exactly 100 percent due to rounding.

#### Variables

---

The following section describes the variables used in this report.

##### **Above Guideline Range**

*Above Guideline Range* are cases in which the sentence imposed was above the applicable guideline range.

##### **Below Guideline Range**

*Below Guideline Range* are cases in which the sentence imposed was below the applicable guideline range and for which the court cited a reason on Part VI of the Statement of Reasons other than §5K1.1 or gave no reason for the sentence. This category includes sentences that result from government motions as

---

<sup>1</sup> 28 U.S.C. §§ 995(a)(12) and (14) – (16).

<sup>2</sup> See U.S. SENTENCING COMM'N, *Guidelines Manual*, §1B1.9 (Nov. 2025).

<sup>3</sup> See 18 U.S.C. §§ 3591-99 for the sentencing procedures that apply in death penalty cases.

well as from motions by the defendant.

### **Circuit**

Information on judicial *Circuit* is generated using the location of the judicial district in which the person was sentenced.

### **Citizenship Status**

Information on the *Citizenship Status* of sentenced individuals is obtained from the Presentence Report. Persons are categorized as one of the following: “U.S. citizen,” “resident alien,” “illegal alien,” “extradited alien,” or “non-U.S. citizen, alien status unknown.” The latter four categories are collapsed into the category of “non-U.S. citizen.”

### **District**

Information on the judicial *District* in which sentencing occurred is obtained from the Judgment and Commitment Order.

### **EDP Above Range**

*EDP Above Range* are those *Above Guideline Range* cases in which the court applied the adjustment at §3F1.1 for participation in an Early Disposition Program.

### **EDP Below Range**

*EDP Below Range* are those *Below Guideline Range* cases in which the court applied the adjustment at §3F1.1 for participation in an Early Disposition Program.

### **EDP Within Range**

*EDP Within Range* are those *Within Guideline Range* cases in which the court applied the adjustment at §3F1.1 for participation in an Early Disposition Program.

### **Extent of Decrease**

*Extent of Decrease* is calculated based on the difference between the sentence length (including any months of alternative confinement as defined in USSG §5C1.1) and the guideline minimum (including any statutory trumps) for below range cases. Life imprisonment sentences and cases where the guideline minimum is zero months or life are excluded from all extent of decrease calculations due to the logical difficulty in calculating a decrease from these values. High values of the sentence are capped at 470 months for analytical purposes.

### **Extent of Increase**

*Extent of Increase* is calculated based on the difference between the guideline maximum (including any statutory trumps) and the sentence length (including any months of alternative confinement as defined in USSG §5C1.1) for above range cases. Life sentences and cases where the guideline minimum is life are excluded from all extent of increase calculations due to the logical difficulty in calculating an increase from these values. High values of the sentence are capped at 470 months for analytical purposes.

### **Gender**

*Gender* is obtained from the Presentence Report.

### **Government Below Range**

*Government Below Range* are those *Below Guideline Range* cases in which the government sought a sentence below the guideline range and the court did not apply the adjustment at §3F1.1.

### **Guideline Sentencing Range**

The *Guideline Sentencing Range* is taken from the Statement of Reasons provided by the sentencing court. Alternatively, if the Statement of Reasons is missing, then the information is taken from the Presentence Report.

For tables in this report, unless otherwise indicated, the guideline sentencing range does not take into account applicable statutory restrictions on either the maximum or the minimum of the range; therefore, it may differ from the available range, which does take into account the statutory restrictions.

### **Non-Government Below Range**

*Non-Government Below Range* are those *Below Guideline Range* cases in which the government did not seek a sentence below the guideline range and the court did not apply the adjustment at §3F1.1.

### **Primary Drug Type**

Information on *Primary Drug Type* is obtained from the Presentence Report, Judgment and Commitment Order, or Plea Agreement. It is recorded only if at least one of the statutes of conviction recorded by the Commission is an offense under title 21 of the United States Code or an offense under another title when the underlying conduct involves a controlled substance. Information about type of drug in the text and tables is derived from the primary drug type (i.e., the type that produces the highest base offense level).

The category *Fentanyl* includes cases in which the drug involved is Fentanyl (N-phenyl-N-[1-(2-phenylethyl)-4-piperidinyl] Propanamide) and cases in which the court determined the substance involved to be a Fentanyl Analogue, as defined in the *Guidelines Manual*. The category *Marijuana* includes Hashish and Hashish oil. The category *Methamphetamine* includes pure (actual) methamphetamine, “Ice,” methamphetamine mixture, and methamphetamine precursors sentenced under any drug trafficking guideline other than USSG §2D1.11 (for example ephedrine and pseudoephedrine). All drug types not listed separately in this report are collapsed into the “Other” drug category.

### **Primary Guideline**

When more than one sentencing guideline is applied in a case, the *Primary Guideline* is the guideline that has the highest adjusted offense level (this includes the Base Offense Level, all applicable Specific Offense Characteristics, and Chapter Three Adjustments prior to the application of Multiple Count Units).

### **Race**

Information on *Race* is obtained from the Presentence Report in separate categories of race and ethnicity (*White, Black, Native American or Alaskan Native, Asian or Pacific Islander, Multiracial, and “Other”*). Ethnicity data indicates whether a sentenced individual is of Hispanic origin. For purposes of this report, individuals whose ethnic background is designated as Hispanic are represented as Hispanic in all tables regardless of racial background. The *Other* race category includes individuals of Native American or Alaskan Native, Asian or Pacific Islander, Multiracial, and “Other” origin.

### **Sentence Imposed or Sentence Length**

*Sentence Imposed* or *Sentence Length* reports the mean and median terms of the sentence imposed in months. It also includes any time served amounts and imprisonment under USSG §5G1.3. This information is obtained from the Judgment and Commitment Order. Mean and median sentence lengths are rounded to the nearest month. Probation sentences are included as zero months. Any portion of a sentence that is an alternative confinement as described in USSG §5C1.1 is included.

Cases in which a sentence is imposed, but where the length is indeterminable, are excluded. When sentences are expressed as “time served” on the Judgment and Commitment Order, Commission staff uses the dates in federal custody to determine the length of time served when an individual has been in custody the entire time. If the individual has been in and out of custody, or the start date is unclear/missing, then the Commission assigns a value of one day as a minimal time served amount for these cases. In cases where the court imposes a sentence of life imprisonment, a numeric value is necessary to include these cases in any sentence length analysis. Accordingly, life sentences are reported as 470 months, a length consistent with the average life expectancy of individuals sentenced for federal offenses given the average age of those persons. Sentences of greater than 470 months are also reported as 470 months. The footnote in the relevant tables and figures indicates when this occurs.

### **Sentenced Individuals**

Each *Sentenced Individual* or case, as recorded by the Commission, involves a single sentencing event for a single person. Multiple counts of conviction, including counts of conviction charged on multiple indictments, are considered a single sentencing event if a single sentence was imposed for the counts on the same day at the same time by the same judge. An individual may account for more than one case if the person was involved in more than one sentencing event during the fiscal year. Data on co-defendants in the same sentencing will appear as separate cases.

### **Sentence Type**

Using sentencing information obtained from the Judgment and Commitment Order, the *Total Receiving Imprisonment* category includes the number of individuals sentenced (and percent of *Total Cases*) who received a commitment to the Bureau of Prisons. This category is the sum of cases in *Prison Only* and the *Prison and Alternatives* categories.

The *Total Receiving Probation* category includes the number of individuals sentenced (and the percent of *Total Cases*) who received a term of probation with or without a condition of community confinement, intermittent confinement, or home detention. This category is the sum of *Probation Only* and *Probation and Alternatives* categories.

The *Prison Only* category includes individuals sentenced to a term of imprisonment only, with no additional conditions of community confinement, home detention or intermittent confinement.

The *Prison and Alternatives* category includes all cases in which individuals received prison and conditions of alternative confinement as defined in USSG §5C1.1. This category includes, but is not limited to, Zone A, Zone B, or Zone C cases receiving prison with additional conditions of a term of community confinement, home detention, or intermittent confinement.

The *Probation Only* category includes the number of individuals who received a term of probation without a condition of community confinement, intermittent confinement, or home detention.

The *Probation and Alternatives* category includes the number of individuals who received a term of probation with a condition of community confinement, intermittent confinement, or home detention.

The *Fine Only* category includes the number of individuals who received no prison, no probation, and no time of alternative confinement as defined in USSG §5C1.1. Most of these sentenced individuals received a fine and/or a special assessment.

### **§5K1.1 Substantial Assistance**

§5K1.1 *Substantial Assistance* are cases in which the sentence imposed was below the applicable guideline range and where the court cited §5K1.1 as a reason for the sentence on Part VI of the Statement of Reasons.

### **§5K1.1 Substantial Assistance and EDP**

§5K1.1 *Substantial Assistance and EDP* are those §5K1.1 *Substantial Assistance* cases in which the court applied the adjustment at §3F1.1 for participation in an Early Disposition Program.

### **§5K1.1 Substantial Assistance and Other Below Range**

§5K1.1 *Substantial Assistance and Other Below Range* are those §5K1.1 *Substantial Assistance* cases in which the court did not apply the adjustment at §3F1.1 for participation in an Early Disposition Program and cited at least one reason for the sentence on Part VI of the Statement of Reasons other than §5K1.1.

### **§5K1.1 Substantial Assistance Only**

§5K1.1 *Substantial Assistance Only* are those §5K1.1 *Substantial Assistance* cases in which the court did not apply the adjustment at §3F1.1 for participation in an Early Disposition Program and did not cite any reason for the sentence other than §5K1.1 on Part VI of the Statement of Reasons.

### **Type of Crime**

Information on *Type of Crime* is obtained from the primary guideline detailed in the Presentence Report. If the primary guideline is an “attempt/conspiracy” guideline such as USSG §2X1.1, then the underlying guideline is used to determine the type of crime category. If there is no primary guideline provided, then information about the type of crime category is obtained from the statutes of conviction listed on the Judgment and Commitment Order. When the “type of crime” for the case is determined from the statutes of conviction, the offense applicable to the count of conviction with the highest statutory maximum becomes the “type of crime.” If two or more counts are found to have the same statutory maximum, the “type of crime” is selected according to which count of conviction has the highest statutory minimum. Finally, in the event of a small number of cases still tied, the “type of crime” that best represented the nature of the criminal behavior is chosen. For convenience in analysis, a summary variable describing “type of crime” is derived. This is generated by grouping similar primary offenses into a smaller set of categories. Note that the crime categories differ between the individual and organizational datafiles. Listed below are the type of crimes that are grouped into each of the crime categories used in the individual datafile tables for this report:

*Administration of Justice* includes obstructing or impeding officers, contempt, obstruction of justice, perjury or subornation of perjury, bribery of a witness, impersonation, failure to appear by defendant, failure to appear by material witness, commission of offense while on release, payment of witness, and misprision of a felony. This category includes persons sentenced under §§2A2.4, 2J1.1, 2J1.2, 2J1.3, 2J1.4, 2J1.6, 2J1.9, and 2X4.1 of the *Guidelines Manual*.

*Antitrust* includes bid-rigging, price-fixing, and market allocation agreement. This category includes individuals sentenced under §2R1.1 of the *Guidelines Manual*.

*Arson* includes property damage by explosives and use of fire or explosives to commit a federal felony. This category includes persons sentenced under §§2K1.4 and 2K1.7 (deleted) of the *Guidelines Manual*.

*Assault* includes attempt to commit murder, assault with intent to murder, threatening communication, aggravated assault, minor assault, and conspiracy that includes assault with attempt to murder. This category includes persons sentenced under §§2A2.1, 2A2.2, and 2A2.3 of the *Guidelines Manual*.

*Bribery/Corruption* includes offenses involving public officials and violations of federal election campaign laws, bribe involving officials, bribery — bank loan/commercial, loan or gratuity to bank examiner, *etc.*, gratuity involving officials, bribe or gratuity affecting employee plan, conflict of interest, payment or receipt of unauthorized compensation, and making, receiving, or failing to report a contribution, donation, or expenditure in violation of the Federal Election Campaign Act. This category includes persons sentenced under §§2B4.1, 2C1.1, 2C1.2, 2C1.3, 2C1.4 (deleted), 2C1.5, 2C1.6 (deleted), 2C1.7 (deleted), and 2C1.8 of the *Guidelines Manual*.

*Burglary/Trespass* includes burglary of a residence and burglary of a structure other than a residence, post office burglary, burglary of DEA premises (pharmacy), bank burglary, and trespass. This category includes persons sentenced under §§2B2.1, 2B2.2 (deleted), and 2B2.3 of the *Guidelines Manual*.

*Child Pornography* includes the receipt or possession of materials involving the sexual exploitation of minors. This category includes persons sentenced under §§2G2.2 and 2G2.4 (deleted) of the *Guidelines Manual*.

*Commercialized Vice* includes gambling, animal fighting, and prostitution offenses. This category includes persons sentenced under §2G1.1 where the court did NOT apply a Base Offense Level of 34, and all individuals sentenced under §§2E3.1, 2E3.2 (deleted), and 2E3.3 (deleted) of the *Guidelines Manual*.

*Drug Possession* includes simple possession of all drug types. This category includes persons sentenced under §2D2.1 of the *Guidelines Manual*.

*Drug Trafficking* includes drug distribution/manufacture — conspiracy, continuing criminal enterprise, drug distribution — employee under 21, drug distribution near school, drug import/export, drug distribution to person under 21, establish/rent drug operation, endangering human life while manufacturing, and narco-terrorism. This category includes persons sentenced under §§2D1.1, 2D1.2, 2D1.5, 2D1.6, 2D1.8, 2D1.10, and 2D1.14 of the *Guidelines Manual*.

*Environmental* includes waste discharge; specially protected fish, wildlife, and plants; recordkeeping; tampering; and falsification; tampering with a public water system; mishandling of environmental pollutants; and hazardous devices on federal lands. This category includes persons sentenced under §§2K3.1 (deleted), 2Q1.1, 2Q1.2, 2Q1.3, 2Q1.4, 2Q1.5 (deleted), 2Q1.6, 2Q2.1, and 2Q2.2 (deleted) of the *Guidelines Manual*.

*Extortion/Racketeering* includes extortion by force, or threat of injury or serious damage, extortionate extension of credit, blackmail, Hobbs Act extortion, travel in aid of racketeering, crime relating to racketeering, and violent crimes in aid of racketeering, unlawful conduct relating to contraband cigarettes, and labor racketeering. This category includes persons sentenced under §§2B3.2, 2B3.3, 2E1.1, 2E1.2, 2E1.3, 2E1.4, 2E1.5 (deleted), 2E2.1, 2E4.1, 2E5.1, 2E5.2 (deleted), 2E5.3, 2E5.4 (deleted), 2E5.5 (deleted), and 2E5.6 (deleted) of the *Guidelines Manual*.

*Firearms* includes unlawful receipt/possession/transportation of firearms, ammunition, or explosive material; prohibited transactions involving firearms or ammunition; possession of guns/explosives on aircraft; unlawful trafficking, etc., in explosives; possession of guns/explosives in federal facility/schools; use of fire or explosives to commit felony; use of firearms or ammunition during crime; improper storage of explosive materials; and failure to report theft of explosive materials. This category includes persons sentenced under §§2K1.1, 2K1.2, 2K1.3, 2K1.5, 2K1.6, 2K2.1, 2K2.2, 2K2.3, 2K2.4, 2K2.5, 2K2.6, and 2K3.2 of the *Guidelines Manual*.

*Food and Drug* includes tampering with risk of death or injury, providing false information or tampering with products, tampering to injure business, odometer laws and regulations, and violation of regulations involving food, drugs, etc. This category includes persons sentenced under §§2N1.1, 2N1.2, 2N1.3, 2N2.1, and 2N3.1 of the *Guidelines Manual*.

*Forgery/Counterfeiting/Copyright* includes counterfeit bearer obligations and forgery/counterfeit (non-bearer obligations) as well as criminal infringement of copyright or trademark. This category includes persons sentenced under §§2B5.1, 2B5.2 (deleted), 2B5.3, and 2B5.4 (deleted) of the *Guidelines Manual*.

*Fraud/Theft/Embezzlement* includes fraud and deceit, embezzlement — property, embezzlement from labor unions, embezzlement — mail/post office, embezzlement from benefit plans, bank embezzlement, bank larceny, theft from benefit plans, other theft —

mail/post office, receipt/possession of stolen property, theft from labor union, theft or damage to cultural heritage resources, insider trading, and aggravated identity theft. This category includes persons sentenced under §§2B1.1, 2B1.2 (deleted), 2B1.3 (deleted), 2B1.4, 2B1.5, 2B1.6, 2F1.1 (deleted), and 2F1.2 (deleted) of the *Guidelines Manual*.

*Immigration* includes trafficking in U.S. passports, trafficking in entry documents, failure to surrender naturalization certificate, fraudulently acquiring U.S. passports, smuggling, transporting, or harboring an unlawful alien, fraudulently acquiring entry documents, and unlawfully entering or remaining in the U.S. This category includes persons sentenced under §§2L1.1, 2L1.2, 2L1.3 (deleted), 2L2.1, 2L2.2, 2L2.3 (deleted), 2L2.4 (deleted), and 2L2.5 of the *Guidelines Manual*.

*Individual Rights* includes interference with rights under color of law; force or threats to deny benefits or rights; obstructing an election or registration; manufacture, etc. — eavesdropping device; other deprivations/discrimination; obstructing correspondence; peonage, servitude, and slave trade; intercept communication or eavesdropping; and conspiracy to deprive individual of civil rights. This category includes persons sentenced under §§2H1.1, 2H1.2 (deleted), 2H1.3 (deleted), 2H1.4 (deleted), 2H1.5 (deleted), 2H2.1, 2H3.1, 2H3.2, 2H3.3, 2H4.1, and 2H4.2 of the *Guidelines Manual*.

*Kidnapping* includes hostage and ransom taking, abduction, unlawful restraint, and aircraft piracy. This category includes persons sentenced under §§2A4.1, 2A4.2, and 2A5.1 of the *Guidelines Manual*.

*Manslaughter* includes both involuntary and voluntary manslaughter. This category includes persons sentenced under §§2A1.3 and 2A1.4 of the *Guidelines Manual*.

*Money Laundering* includes laundering of monetary instruments, monetary transaction from unlawful activity, failure to file currency report, and failure to report monetary transactions. This category includes persons sentenced under §§2S1.1, 2S1.2 (deleted), 2S1.3, and 2S1.4 (deleted) of the *Guidelines Manual*.

*Murder* includes first degree murder, second degree murder, and conspiracy or solicitation to commit murder. This category includes persons sentenced under §§2A1.1, 2A1.2, and 2A1.5 of the *Guidelines Manual*.

*National Defense* includes treason, sabotage, espionage, evasion of military service, prohibited financial transactions and exports, providing material support to designated foreign terrorist organizations, nuclear, biological, and chemical weapons, and weapons of mass destruction. This category includes persons sentenced under §§2M1.1, 2M2.1, 2M2.2 (deleted), 2M2.3, 2M2.4 (deleted), 2M3.1, 2M3.2, 2M3.3, 2M3.4, 2M3.5, 2M3.6 (deleted), 2M3.7 (deleted), 2M3.8 (deleted), 2M3.9, 2M4.1, 2M5.1, 2M5.2, 2M5.3, 2M6.1, and 2M6.2 of the *Guidelines Manual*.

*Obscenity/Other Sex Offenses* includes failure to register as a sex offender, recordkeeping offenses involving production of sexually explicit material, and importing, mailing, transporting, or broadcasting obscene material. This category includes persons sentenced under §§2A3.5, 2A3.6, 2G2.5, 2G3.1, and 2G3.2 of the *Guidelines Manual*.

*Prison Offenses* includes contraband in prisons, riots in federal facilities, and escape. This category includes persons sentenced under §§2P1.1, 2P1.2, 2P1.3, and 2P1.4 (deleted) of the *Guidelines Manual*.

*Robbery* includes bank robbery, Hobbs Act robbery, post office robbery, other robbery, and carjacking. This category includes persons sentenced under §2B3.1 of the *Guidelines Manual*.

*Sexual Abuse* includes criminal sexual abuse, sexual abuse of a minor, sexual abuse of a ward, abusive sexual contact, transportation of minor for sex, sex trafficking of children, sex trafficking of adults by force, fraud or coercion, child pornography production, and child exploitation enterprises. This category includes persons sentenced under §2G1.1 who received a Base Offense Level of 34, and all individuals sentenced under §§2A3.1, 2A3.2, 2A3.3, 2A3.4, 2G1.2 (deleted), 2G1.3, 2G2.1, 2G2.3, and 2G2.6 of the *Guidelines Manual*.

*Stalking/Harassing* includes threatening or harassing communications, hoaxes, false liens, stalking, and domestic violence. This category includes persons sentenced under §§2A6.1 and 2A6.2 of the *Guidelines Manual*.

*Tax* includes non-payment of taxes, conspiracy to avoid taxes, offenses relating to withholding statements, aiding or advising tax fraud, failing to collect or truthfully account for and pay over taxes, failing to deposit collected taxes in required accounts after notice, alcohol and tobacco tax offenses, and customs taxes. This category includes persons sentenced under §§2T1.1, 2T1.2 (deleted), 2T1.3 (deleted), 2T1.4, 2T1.5 (deleted), 2T1.6, 2T1.7, 2T1.8, 2T1.9, 2T2.1, 2T2.2, 2T3.1, and 2T3.2 (deleted) of the *Guidelines Manual*.

*Other Miscellaneous Offenses* includes interference with a flight crew, unlawful sale, transportation, possession, manufacturing, or importation of drug paraphernalia, distributing, importing, or exporting listed chemicals, evading reporting or recordkeeping requirements involving chemicals, acquiring a controlled substance by fraud or forgery, border tunnels and subterranean passages, and all other felony and miscellaneous offenses not previously listed in any of the other categories or covered by specific guidelines. This category includes persons sentenced under §§2A5.2, 2D1.7, 2D1.11, 2D1.12, 2D1.13, 2D2.2, 2D2.3, 2D3.1, 2X5.1, 2X5.2, and 2X7.1 of the *Guidelines Manual*. In addition, this category includes persons sentenced under §§2X1.1, 2X2.1, 2X3.1, 2X6.1, and 2X7.2 of the *Guidelines Manual* if no underlying guideline was provided.

### **Type of Plea**

Information on whether the defendant was convicted after a plea. In cases where a plea was entered, *Type of Plea* also indicates whether the plea was in writing and whether the plea was a “binding plea” as described in Federal Rule of Criminal Procedure 11(c)(1)(C).

### **Within Guideline Range**

*Within Guideline Range* are cases in which the sentence imposed is within the guideline range and within the statutory minimum (if any) and maximum. The type of sentence imposed also must meet minimum zone requirements.

### **Within Range**

*Within Range* cases are those *Within Guideline Range* cases in which court did not apply the adjustment at §3F1.1 for participation in an Early Disposition Program.

### **Year**

Information on *Year* is obtained from the Judgment and Commitment Order. Unless otherwise indicated, the sentencing year is defined as the fiscal year in which the individual was sentenced.