

United States Sentencing Commission Quarterly Data Report



**2nd Quarter Release
Preliminary Fiscal Year 2025 Data
Through March 31, 2025**

Introduction

As part of its ongoing mission, the United States Sentencing Commission provides Congress, the judiciary, the executive branch, and the general public with data extracted and analyzed from sentencing documents submitted to the Commission by the courts.¹ Data is reported on an annual basis in the Commission's *Annual Report* and *Sourcebook of Federal Sentencing Statistics*.² Additional information on Commission data can be found through the Commission's "Interactive Data Analyzer" at <https://ida.ussc.gov>.

After the Supreme Court's decision in *United States v. Booker* on January 12, 2005, the Commission began reporting data on a quarterly basis in order to provide real-time data concerning the sentences imposed in the federal courts. The types of data reported increased over time to accommodate various requests for additional information. These reports were eventually standardized in a format that was largely unchanged through fiscal year 2015. In fiscal year 2016, the Commission revised the format for its *Quarterly Data Reports*, to include information not previously reported on a quarterly basis, and to make it easier to understand the data that was presented.

Beginning in 2018, the Commission again updated the way it presents quarterly data. Now, all analyses that involve a comparison of the sentence imposed relative to the guideline range that applied in the case are presented in a new way. Sentences are now grouped into two broad categories: Sentences Under the Guidelines Manual and Variances. The former category comprises all cases in which the sentence imposed was within the applicable guideline range or, if outside the range, where the court indicated that one or more of the departure reasons in the Commission's *Guidelines Manual* was a basis for the sentence. Variance cases are those where the sentence was outside the guideline range (either above or below) and where the court did not cite any guideline reason for the sentence. Data for important subgroups within these two categories are also reported.

This report reflects other methodological changes that began with fiscal year 2018 data. Principal among them is the way cases are assigned to a "type of crime" (previously called offense type). Beginning with fiscal year 2018, the guideline (or guidelines) that the court applied in determining the sentence largely determines the crime type category to which a case is assigned. Previously, the maximum penalty provided under the statute of conviction was used for this categorization. Also, the names of some of the crime type categories have been revised and some outdated categories have been removed from the tables and figures.

Additionally, cases involving the production of child pornography have been assigned to the sexual abuse crime type. Previously, these cases were assigned to the child pornography offense type in the *Sourcebook*. This change reflects the way in which the production of child

¹ In each federal felony or Class A misdemeanor case, sentencing courts are required to submit the following documents to the Commission: the Judgment and Commitment Order, the Statement of Reasons, the plea agreement (if applicable), the indictment or other charging document, and the presentence report. See 28 U.S.C. § 994(w).

² Electronic copies of the *Annual Report* and *Sourcebook of Federal Sentencing Statistics* for fiscal years 1995 through 2024 are available at the Commission's website, www.ussc.gov.

pornography is treated under the sentencing guidelines.

Another important methodological change is that sentences are capped at 470 months for all analyses. This is consistent with the Commission's long-standing practice of assigning a value of 470 months to any life imprisonment sentence.

Because of these methodological changes, direct comparisons between data for fiscal year 2018 and later years cannot always be made to data reported in the *Quarterly Data Reports* released before the Final Fiscal Year 2018 *Quarterly Data Report*.

The data in this report is preliminary and subject to change as the Commission collects, analyzes, and reports on data from additional cases throughout the fiscal year. When data for each new quarter is made available, the Commission will update the previous preliminary quarterly totals in the most recent release until the release of the final fiscal year data in the Commission's *Sourcebook*.³

³ Data for previous quarters may change for many reasons. For example, the courts have up to 30 days after the entry of judgment in a case to submit court documents to the Commission. The Commission both extracts information from the documents and screens cases through the quality control procedures and does not include any case in a data release unless it has been fully entered and reviewed.

CONTENTS

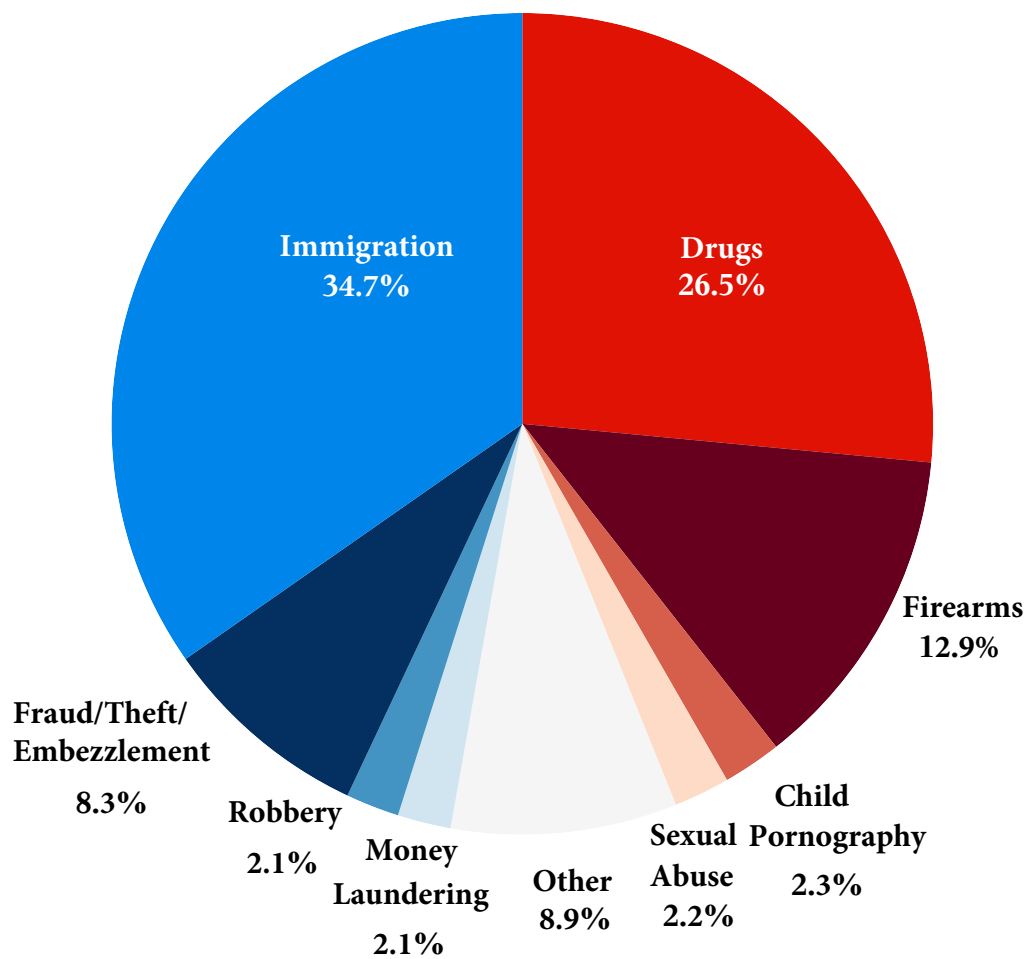
Figure 1: Sentenced Individuals by Type of Crime	1
Table 1: Sentenced Individuals by Type of Crime	2
Table 2: Sentenced Individuals in Each Circuit and District.....	3
Figure 2: Number of Sentenced Individuals by Selected Primary Guidelines	5
Table 3: Race of Sentenced Individuals by Type of Crime	6
Table 4: Gender of Sentenced Individuals by Type of Crime	7
Table 5: Citizenship of Sentenced Individuals by Type of Crime.....	8
Table 6: Sentence Length by Type of Crime	9
Table 7: Sentence Type by Type of Crime	10
Table 8: Sentence Imposed Relative to the Guideline Range.....	11
Figure 3: Sentences Under the Guidelines Manual and Variances Quarterly Data	12
Figure 4: Sentence Imposed Relative to the Guideline Range Quarterly Data.....	13
Table 9: Sentence Imposed Relative to the Guideline Range In Each Circuit and District.....	14
Table 10: Sentence Imposed Relative to the Guideline Range by Type of Crime	17
Table 11: Sentence Imposed Relative to the Guideline Range by Primary Sentencing Guideline	18
Table 12: Attribution Category for Sentences Outside of the Guideline Range.....	20
Table 13: Extent of Upward Departures by Type of Crime.....	22
Table 14: Extent of Upward Variances by Type of Crime	23
Table 15: Extent of §5K1.1 Substantial Assistance Departures by Type of Crime.....	24
Table 16: Extent of §5K3.1 Early Disposition Program Departures by Type of Crime.....	25
Table 17: Extent of Other Downward Departures by Type of Crime.....	26

Table 18: Extent of Downward Variances by Type of Crime	27
Figure 5: Sentence Length and Guideline Minimum Quarterly Data for Sentenced Individuals.....	28
Figure 6: Sentence Length and Guideline Minimum Quarterly Data for Individuals Sentenced Under §2B1.1	29
Figure 7: Sentence Length and Guideline Minimum Quarterly Data for Individuals Sentenced Under §2K2.1	30
Figure 8: Sentence Length and Guideline Minimum Quarterly Data for Individuals Sentenced Under §2L1.1	31
Figure 9: Sentence Length and Guideline Minimum Quarterly Data for Individuals Sentenced Under §2L1.2	32
Figure 10: Sentence Length and Guideline Minimum Quarterly Data for Individuals Sentenced Under §2D1.1	33
Figure 11: Distribution of Primary Drug Type in Federal Drug Cases	34
Figure 12: Sentence Length In Drug Trafficking Cases by Major Drug Type Quarterly Data	35
 <i>Appendix</i>	
Appendix A: Descriptions of Datafiles and Variables.....	A-1

Figure 1

SENTENCED INDIVIDUALS BY TYPE OF CRIME¹

**2nd Quarter 2025 Preliminary Cumulative Data
(October 1, 2024, through March 31, 2025)**



¹ This figure includes the 30,526 cases reported to the Commission. The Drugs category includes trafficking and simple possession. Descriptions of variables used in this figure are provided in Appendix A.

SOURCE: U.S. Sentencing Commission, Preliminary 2025 Datafile, USSCFY25 (October 1, 2024, through March 31, 2025).

Table 1

SENTENCED INDIVIDUALS BY TYPE OF CRIME¹
2nd Quarter 2025 Preliminary Cumulative Data (October 1, 2024, through March 31, 2025)

TYPE OF CRIME	N	%
TOTAL	30,526	100.0
Administration of Justice	294	1.0
Antitrust	6	0.0
Arson	44	0.1
Assault	419	1.4
Bribery/Corruption	173	0.6
Burglary/Trespass	22	0.1
Child Pornography	694	2.3
Commercialized Vice	42	0.1
Drug Possession	34	0.1
Drug Trafficking	8,068	26.4
Environmental	73	0.2
Extortion/Racketeering	35	0.1
Firearms	3,923	12.9
Food and Drug	19	0.1
Forgery/Counter/Copyright	46	0.2
Fraud/Theft/Embezzlement	2,535	8.3
Immigration	10,605	34.7
Individual Rights	33	0.1
Kidnapping	67	0.2
Manslaughter	36	0.1
Money Laundering	656	2.1
Murder	212	0.7
National Defense	143	0.5
Obscenity/Other Sex Offenses	162	0.5
Prison Offenses	193	0.6
Robbery	628	2.1
Sexual Abuse	669	2.2
Stalking/Harassing	131	0.4
Tax	208	0.7
Other	356	1.2

¹ Descriptions of variables used in this table are provided in Appendix A.

SOURCE: U.S. Sentencing Commission, Preliminary 2025 Datafile, USSCFY25 (October 1, 2024, through March 31, 2025).

Table 2

SENTENCED INDIVIDUALS IN EACH CIRCUIT AND DISTRICT¹

2nd Quarter 2025 Preliminary Cumulative Data
(October 1, 2024, through March 31, 2025)

CIRCUIT			CIRCUIT		
District	N	%	District	N	%
TOTAL	30,526	100.0			
D.C. CIRCUIT	233	0.8	FIFTH CIRCUIT	9,580	31.4
District of Columbia	233	0.8	Louisiana		
			Eastern	154	0.5
			Middle	51	0.2
			Western	160	0.5
FIRST CIRCUIT	903	3.0	Mississippi		
Maine	80	0.3	Northern	100	0.3
Massachusetts	247	0.8	Southern	174	0.6
New Hampshire	68	0.2	Texas		
Puerto Rico	453	1.5	Eastern	487	1.6
Rhode Island	55	0.2	Northern	606	2.0
			Southern	3,501	11.5
SECOND CIRCUIT	1,406	4.6	Western	4,347	14.2
Connecticut	134	0.4			
New York			SIXTH CIRCUIT	1,998	6.5
Eastern	296	1.0	Kentucky		
Northern	187	0.6	Eastern	176	0.6
Southern	470	1.5	Western	190	0.6
Western	211	0.7	Michigan		
Vermont	108	0.4	Eastern	353	1.2
			Western	121	0.4
THIRD CIRCUIT	1,105	3.6	Ohio		
Delaware	54	0.2	Northern	347	1.1
New Jersey	385	1.3	Southern	258	0.8
Pennsylvania			Tennessee		
Eastern	224	0.7	Eastern	226	0.7
Middle	194	0.6	Middle	150	0.5
Western	218	0.7	Western	177	0.6
Virgin Islands	30	0.1			
			SEVENTH CIRCUIT	1,011	3.3
FOURTH CIRCUIT	2,047	6.7	Illinois		
Maryland	195	0.6	Central	105	0.3
North Carolina			Northern	272	0.9
Eastern	427	1.4	Southern	114	0.4
Middle	156	0.5	Indiana		
Western	156	0.5	Northern	129	0.4
South Carolina	285	0.9	Southern	155	0.5
Virginia			Wisconsin		
Eastern	420	1.4	Eastern	171	0.6
Western	134	0.4	Western	65	0.2
West Virginia					
Northern	169	0.6			
Southern	105	0.3			

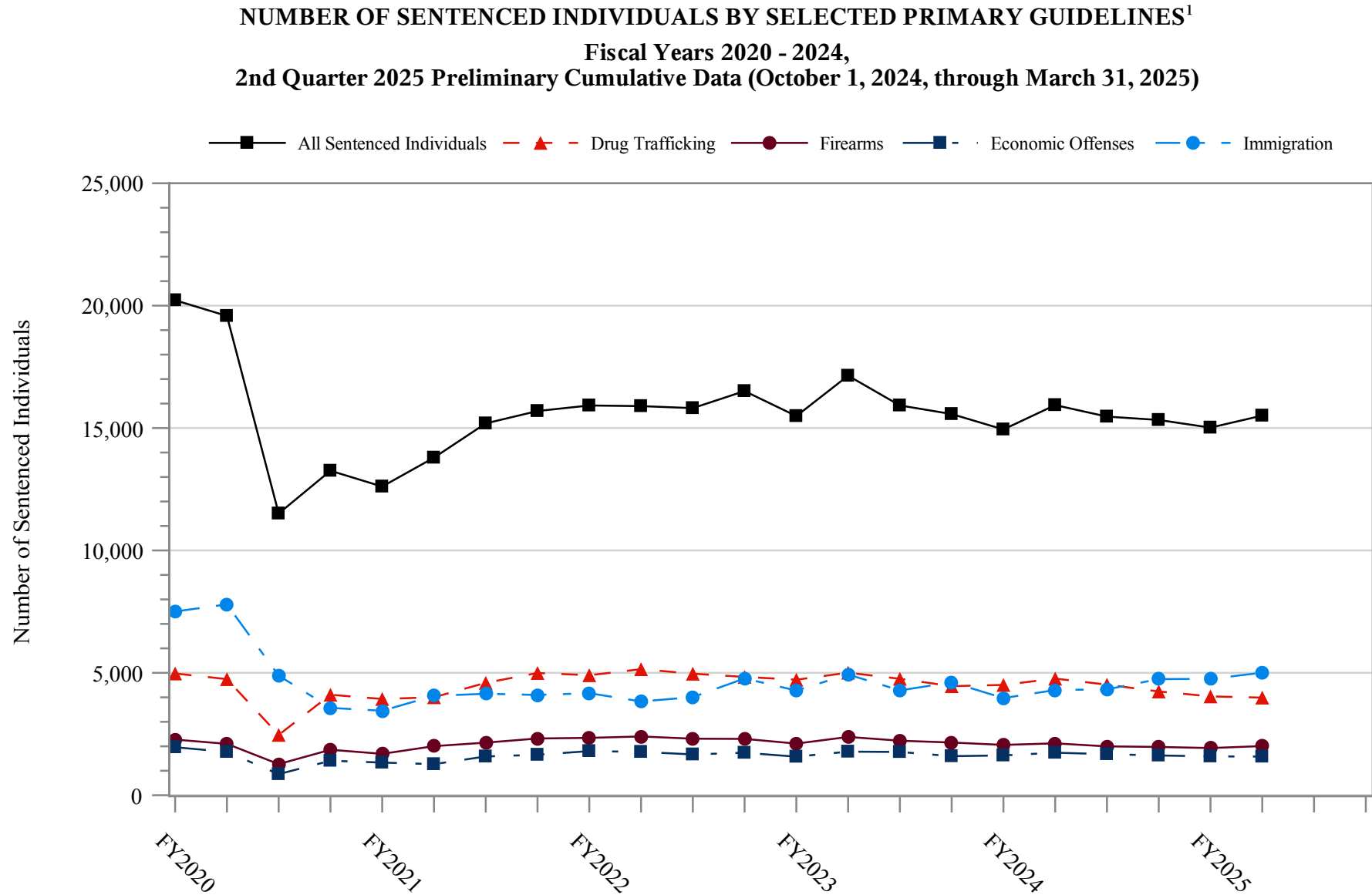
Table 2 (cont.)

CIRCUIT			CIRCUIT		
District	N	%	District	N	%
EIGHTH CIRCUIT	2,188	7.2	TENTH CIRCUIT	2,416	7.9
Arkansas			Colorado	173	0.6
Eastern	266	0.9	Kansas	185	0.6
Western	87	0.3	New Mexico	933	3.1
Iowa			Oklahoma		
Northern	148	0.5	Eastern	127	0.4
Southern	176	0.6	Northern	263	0.9
Minnesota	193	0.6	Western	294	1.0
Missouri			Utah	334	1.1
Eastern	465	1.5	Wyoming	107	0.4
Western	272	0.9			
Nebraska	214	0.7	ELEVENTH CIRCUIT	2,523	8.3
North Dakota	154	0.5	Alabama		
South Dakota	213	0.7	Middle	107	0.4
			Northern	249	0.8
NINTH CIRCUIT	5,116	16.8	Southern	145	0.5
Alaska	70	0.2	Florida		
Arizona	1,979	6.5	Middle	715	2.3
California			Northern	119	0.4
Central	368	1.2	Southern	655	2.1
Eastern	229	0.8	Georgia		
Northern	177	0.6	Middle	194	0.6
Southern	1,285	4.2	Northern	198	0.6
Guam	13	0.0	Southern	141	0.5
Hawaii	65	0.2			
Idaho	146	0.5			
Montana	179	0.6			
Nevada	89	0.3			
Northern Mariana Islands	6	0.0			
Oregon	199	0.7			
Washington					
Eastern	135	0.4			
Western	176	0.6			

¹ Descriptions of variables used in this table are provided in Appendix A.

SOURCE: U.S. Sentencing Commission, Preliminary 2025 Datafile, USSCFY25 (October 1, 2024, through March 31, 2025).

Figure 2



¹ The *Drug Trafficking* category includes individuals sentenced under §§2D1.1, 2D1.2, 2D1.5, 2D1.6, 2D1.8, 2D1.10, or 2D1.14. The *Firearms* category includes individuals sentenced under §§2K1.3, 2K1.4, 2K2.1, 2K2.4, or 2K2.5. The *Economic Offenses* category includes individuals sentenced under §§2B1.1, 2B1.4, 2B1.5, 2B2.1, 2B3.1, 2B3.2, 2B4.1, 2B5.1, or 2B5.3. The *Immigration* category includes individuals sentenced under §§2L1.1, 2L1.2, 2L2.1, or 2L2.2. Descriptions of variables used in this figure are provided in Appendix A.

SOURCE: U.S. Sentencing Commission, 2020 - 2024 Datafiles, USSCFY20 - USSCFY24, and Preliminary Data from USSCFY25 (October 1, 2024, through March 31, 2025).

Table 3

RACE OF SENTENCED INDIVIDUALS BY TYPE OF CRIME¹
2nd Quarter 2025 Preliminary Cumulative Data (October 1, 2024, through March 31, 2025)

TYPE OF CRIME	TOTAL	WHITE		BLACK		HISPANIC		OTHER	
		N	%	N	%	N	%	N	%
TOTAL	30,319	5,904	19.5	7,291	24.0	15,874	52.4	1,250	4.1
Administration of Justice	294	107	36.4	56	19.0	108	36.7	23	7.8
Antitrust	6	5	83.3	0	0.0	1	16.7	0	0.0
Arson	44	15	34.1	13	29.5	9	20.5	7	15.9
Assault	417	91	21.8	119	28.5	69	16.5	138	33.1
Bribery/Corruption	172	60	34.9	49	28.5	45	26.2	18	10.5
Burglary/Trespass	22	10	45.5	4	18.2	3	13.6	5	22.7
Child Pornography	694	510	73.5	38	5.5	117	16.9	29	4.2
Commercialized Vice	42	11	26.2	14	33.3	11	26.2	6	14.3
Drug Possession	32	16	50.0	7	21.9	5	15.6	4	12.5
Drug Trafficking	8,064	1,940	24.1	2,476	30.7	3,398	42.1	250	3.1
Environmental	72	34	47.2	5	6.9	24	33.3	9	12.5
Extortion/Racketeering	34	17	50.0	6	17.6	8	23.5	3	8.8
Firearms	3,918	788	20.1	2,263	57.8	731	18.7	136	3.5
Food and Drug	19	14	73.7	1	5.3	4	21.1	0	0.0
Forgery/Counter/Copyright	46	20	43.5	14	30.4	4	8.7	8	17.4
Fraud/Theft/Embezzlement	2,523	922	36.5	958	38.0	493	19.5	150	5.9
Immigration	10,539	259	2.5	192	1.8	10,017	95.0	71	0.7
Individual Rights	30	20	66.7	6	20.0	3	10.0	1	3.3
Kidnapping	67	8	11.9	29	43.3	26	38.8	4	6.0
Manslaughter	36	2	5.6	3	8.3	1	2.8	30	83.3
Money Laundering	653	146	22.4	174	26.6	270	41.3	63	9.6
Murder	212	26	12.3	71	33.5	77	36.3	38	17.9
National Defense	142	33	23.2	20	14.1	81	57.0	8	5.6
Obscenity/Other Sex Offenses	162	54	33.3	27	16.7	20	12.3	61	37.7
Prison Offenses	189	38	20.1	77	40.7	58	30.7	16	8.5
Robbery	628	76	12.1	428	68.2	102	16.2	22	3.5
Sexual Abuse	667	377	56.5	106	15.9	104	15.6	80	12.0
Stalking/Harassing	129	75	58.1	18	14.0	19	14.7	17	13.2
Tax	208	122	58.7	33	15.9	27	13.0	26	12.5
Other	258	108	41.9	84	32.6	39	15.1	27	10.5

¹ Of the 30,526 cases, 207 were excluded due to missing information on sentenced individual's race. Descriptions of variables used in this table are provided in Appendix A.

SOURCE: U.S. Sentencing Commission, Preliminary 2025 Datafile, USSCFY25 (October 1, 2024, through March 31, 2025).

Table 4

GENDER OF SENTENCED INDIVIDUALS BY TYPE OF CRIME¹
2nd Quarter 2025 Preliminary Cumulative Data (October 1, 2024, through March 31, 2025)

TYPE OF CRIME	TOTAL	MALE		FEMALE	
		N	%	N	%
TOTAL	30,487	26,767	87.8	3,720	12.2
Administration of Justice	294	221	75.2	73	24.8
Antitrust	6	5	83.3	1	16.7
Arson	44	37	84.1	7	15.9
Assault	418	373	89.2	45	10.8
Bribery/Corruption	173	128	74.0	45	26.0
Burglary/Trespass	22	19	86.4	3	13.6
Child Pornography	694	685	98.7	9	1.3
Commercialized Vice	42	32	76.2	10	23.8
Drug Possession	34	24	70.6	10	29.4
Drug Trafficking	8,068	6,815	84.5	1,253	15.5
Environmental	73	65	89.0	8	11.0
Extortion/Racketeering	35	32	91.4	3	8.6
Firearms	3,923	3,755	95.7	168	4.3
Food and Drug	19	15	78.9	4	21.1
Forgery/Counter/Copyright	46	37	80.4	9	19.6
Fraud/Theft/Embezzlement	2,534	1,822	71.9	712	28.1
Immigration	10,594	9,717	91.7	877	8.3
Individual Rights	33	28	84.8	5	15.2
Kidnapping	67	58	86.6	9	13.4
Manslaughter	36	30	83.3	6	16.7
Money Laundering	656	489	74.5	167	25.5
Murder	212	191	90.1	21	9.9
National Defense	142	121	85.2	21	14.8
Obscenity/Other Sex Offenses	162	161	99.4	1	0.6
Prison Offenses	193	170	88.1	23	11.9
Robbery	628	593	94.4	35	5.6
Sexual Abuse	669	620	92.7	49	7.3
Stalking/Harassing	131	123	93.9	8	6.1
Tax	208	161	77.4	47	22.6
Other	331	240	72.5	91	27.5

¹ Of the 30,526 cases, 39 were excluded due to missing information on sentenced individual's gender. Descriptions of variables used in this table are provided in Appendix A.

SOURCE: U.S. Sentencing Commission, Preliminary 2025 Datafile, USSCFY25 (October 1, 2024, through March 31, 2025).

Table 5

CITIZENSHIP OF SENTENCED INDIVIDUALS BY TYPE OF CRIME¹
2nd Quarter 2025 Preliminary Cumulative Data (October 1, 2024, through March 31, 2025)

TYPE OF CRIME	TOTAL	U.S. CITIZEN		NON-U.S. CITIZEN	
		N	%	N	%
TOTAL	30,402	18,669	61.4	11,733	38.6
Administration of Justice	293	221	75.4	72	24.6
Antitrust	6	6	100.0	0	0.0
Arson	44	41	93.2	3	6.8
Assault	415	397	95.7	18	4.3
Bribery/Corruption	173	164	94.8	9	5.2
Burglary/Trespass	22	21	95.5	1	4.5
Child Pornography	694	658	94.8	36	5.2
Commercialized Vice	42	36	85.7	6	14.3
Drug Possession	32	31	96.9	1	3.1
Drug Trafficking	8,054	6,500	80.7	1,554	19.3
Environmental	70	49	70.0	21	30.0
Extortion/Racketeering	34	27	79.4	7	20.6
Firearms	3,923	3,750	95.6	173	4.4
Food and Drug	18	15	83.3	3	16.7
Forgery/Counter/Copyright	46	38	82.6	8	17.4
Fraud/Theft/Embezzlement	2,526	2,190	86.7	336	13.3
Immigration	10,599	1,498	14.1	9,101	85.9
Individual Rights	32	31	96.9	1	3.1
Kidnapping	67	52	77.6	15	22.4
Manslaughter	36	36	100.0	0	0.0
Money Laundering	656	476	72.6	180	27.4
Murder	212	178	84.0	34	16.0
National Defense	141	95	67.4	46	32.6
Obscenity/Other Sex Offenses	162	158	97.5	4	2.5
Prison Offenses	190	184	96.8	6	3.2
Robbery	627	602	96.0	25	4.0
Sexual Abuse	669	634	94.8	35	5.2
Stalking/Harassing	130	123	94.6	7	5.4
Tax	207	195	94.2	12	5.8
Other	282	263	93.3	19	6.7

¹ Of the 30,526 cases, 124 were excluded due to missing information on sentenced individual's citizenship status. Descriptions of variables used in this table are provided in Appendix A.

SOURCE: U.S. Sentencing Commission, Preliminary 2025 Datafile, USSCFY25 (October 1, 2024, through March 31, 2025).

Table 6

SENTENCE LENGTH BY TYPE OF CRIME¹

2nd Quarter 2025 Preliminary Cumulative Data (October 1, 2024, through March 31, 2025)

TYPE OF CRIME	Mean Months	Median Months	N
TOTAL	51	24	30,526
Administration of Justice	15	10	294
Antitrust	13	6	6
Arson	63	60	44
Assault	76	46	419
Bribery/Corruption	19	9	173
Burglary/Trespass	16	2	22
Child Pornography	116	97	694
Commercialized Vice	10	3	42
Drug Possession	1	0	34
Drug Trafficking	86	70	8,068
Environmental	4	0	73
Extortion/Racketeering	45	36	35
Firearms	50	41	3,923
Food and Drug	6	0	19
Forgery/Counter/Copyright	19	12	46
Fraud/Theft/Embezzlement	23	12	2,535
Immigration	11	6	10,605
Individual Rights	45	12	33
Kidnapping	202	180	67
Manslaughter	73	71	36
Money Laundering	61	30	656
Murder	279	270	212
National Defense	22	12	143
Obscenity/Other Sex Offenses	22	18	162
Prison Offenses	13	10	193
Robbery	111	96	628
Sexual Abuse	229	210	669
Stalking/Harassing	26	18	131
Tax	17	12	208
Other	3	0	356

¹ Sentences greater than 470 months (including life) and probation were included in the sentence average computations as 470 months and zero months, respectively. In addition, the information presented in this table includes conditions of confinement as described in USSG §5C1.1. Descriptions of variables used in this table are provided in Appendix A.

SOURCE: U.S. Sentencing Commission, Preliminary 2025 Datafile, USSCFY25 (October 1, 2024, through March 31, 2025).

Table 7

SENTENCE TYPE BY TYPE OF CRIME¹

2nd Quarter 2025 Preliminary Cumulative Data (October 1, 2024, through March 31, 2025)

TYPE OF CRIME	TOTAL	TOTAL RECEIVING IMPRISONMENT		Prison Only		Prison and Alternatives ²		TOTAL RECEIVING PROBATION		Probation and Alternatives ²		Probation Only		TOTAL RECEIVING FINE ONLY	
		N	%	N	%	N	%	N	%	N	%	N	%	N	%
TOTAL	30,526	28,043	91.9	27,257	89.3	786	2.6	2,365	7.7	375	1.2	1,990	6.5	118	0.4
Administration of Justice	294	225	76.5	216	73.5	9	3.1	68	23.1	14	4.8	54	18.4	1	0.3
Antitrust	6	2	33.3	2	33.3	0	0.0	4	66.7	2	33.3	2	33.3	0	0.0
Arson	44	44	100.0	42	95.5	2	4.5	0	0.0	0	0.0	0	0.0	0	0.0
Assault	419	387	92.4	373	89.0	14	3.3	31	7.4	5	1.2	26	6.2	1	0.2
Bribery/Corruption	173	121	69.9	110	63.6	11	6.4	51	29.5	10	5.8	41	23.7	1	0.6
Burglary/Trespass	22	11	50.0	10	45.5	1	4.5	11	50.0	4	18.2	7	31.8	0	0.0
Child Pornography	694	691	99.6	684	98.6	7	1.0	3	0.4	1	0.1	2	0.3	0	0.0
Commercialized Vice	42	32	76.2	29	69.0	3	7.1	9	21.4	1	2.4	8	19.0	1	2.4
Drug Possession	34	22	64.7	22	64.7	0	0.0	9	26.5	0	0.0	9	26.5	3	8.8
Drug Trafficking	8,068	7,786	96.5	7,528	93.3	258	3.2	281	3.5	57	0.7	224	2.8	1	0.0
Environmental	73	33	45.2	33	45.2	0	0.0	37	50.7	7	9.6	30	41.1	3	4.1
Extortion/Racketeering	35	27	77.1	27	77.1	0	0.0	8	22.9	3	8.6	5	14.3	0	0.0
Firearms	3,923	3,679	93.8	3,580	91.3	99	2.5	242	6.2	53	1.4	189	4.8	2	0.1
Food and Drug	19	4	21.1	4	21.1	0	0.0	14	73.7	1	5.3	13	68.4	1	5.3
Forgery/Counter/Copyright	46	36	78.3	34	73.9	2	4.3	10	21.7	2	4.3	8	17.4	0	0.0
Fraud/Theft/Embezzlement	2,535	1,898	74.9	1,818	71.7	80	3.2	632	24.9	117	4.6	515	20.3	5	0.2
Immigration	10,605	10,088	95.1	9,899	93.3	189	1.8	517	4.9	47	0.4	470	4.4	0	0.0
Individual Rights	33	23	69.7	21	63.6	2	6.1	10	30.3	2	6.1	8	24.2	0	0.0
Kidnapping	67	67	100.0	67	100.0	0	0.0	0	0.0	0	0.0	0	0.0	0	0.0
Manslaughter	36	34	94.4	32	88.9	2	5.6	2	5.6	0	0.0	2	5.6	0	0.0
Money Laundering	656	576	87.8	555	84.6	21	3.2	80	12.2	13	2.0	67	10.2	0	0.0
Murder	212	211	99.5	203	95.8	8	3.8	1	0.5	0	0.0	1	0.5	0	0.0
National Defense	143	101	70.6	93	65.0	8	5.6	12	8.4	0	0.0	12	8.4	30	21.0
Obscenity/Other Sex Offenses	162	150	92.6	137	84.6	13	8.0	12	7.4	3	1.9	9	5.6	0	0.0
Prison Offenses	193	188	97.4	176	91.2	12	6.2	5	2.6	0	0.0	5	2.6	0	0.0
Robbery	628	622	99.0	606	96.5	16	2.5	6	1.0	1	0.2	5	0.8	0	0.0
Sexual Abuse	669	664	99.3	649	97.0	15	2.2	5	0.7	0	0.0	5	0.7	0	0.0
Stalking/Harassing	131	110	84.0	105	80.2	5	3.8	21	16.0	3	2.3	18	13.7	0	0.0
Tax	208	144	69.2	136	65.4	8	3.8	63	30.3	20	9.6	43	20.7	1	0.5
Other	356	67	18.8	66	18.5	1	0.3	221	62.1	9	2.5	212	59.6	68	19.1

¹ Descriptions of variables used in this table are provided in Appendix A.² Alternatives include all cases in which sentenced individuals received conditions of confinement as described in USSG §5C1.1.

Table 8

SENTENCE IMPOSED RELATIVE TO THE GUIDELINE RANGE¹
2nd Quarter 2025 Preliminary Cumulative Data (October 1, 2024, through March 31, 2025)

	N	%
TOTAL CASES	30,414	100.0
SENTENCES UNDER THE GUIDELINES MANUAL	20,470	67.3
Within Guideline Range	14,710	48.4
Upward Departure ²	131	0.4
Downward Departure		
§5K1.1 Substantial Assistance	2,668	8.8
§5K3.1 Early Disposition Program	2,037	6.7
Other Government Motion ³	441	1.4
Non-Government Departure ⁴	483	1.6
VARIANCES	9,944	32.7
Upward Variance ⁵	1,246	4.1
Downward Variance		
Government Motion ⁶	3,104	10.2
Non-Government Variance ⁷	5,594	18.4

¹ This table reflects the 30,526 cases sentenced on or after October 1, 2024, with court documentation cumulatively received, coded, and edited at the U.S. Sentencing Commission by May 27, 2025. Of these, 112 cases were excluded because information was missing from the submitted documents that prevented the comparison of the sentence and the guideline range. Descriptions of variables used in this table are provided in Appendix A.

² Cases in which the sentence imposed was above the applicable guideline range and for which the court cited a reason on Part V of the Statement of Reasons form, other than §5K1.1 or §5K3.1.

³ Cases in which the sentence imposed was below the applicable guideline range and for which the court cited a reason on Part V of the Statement of Reasons form, other than §5K1.1 or §5K3.1, and where the prosecution initiated, proposed, or stipulated to the sentence.

⁴ Cases in which the sentence imposed was below the applicable guideline range and for which the court cited a reason on Part V of the Statement of Reasons form, other than §5K1.1 or §5K3.1, and where the prosecution did not initiate, propose, or stipulate to the sentence.

⁵ Cases in which the sentence imposed was above the applicable guideline range and for which the court cited a reason on Part VI of the Statement of Reasons form.

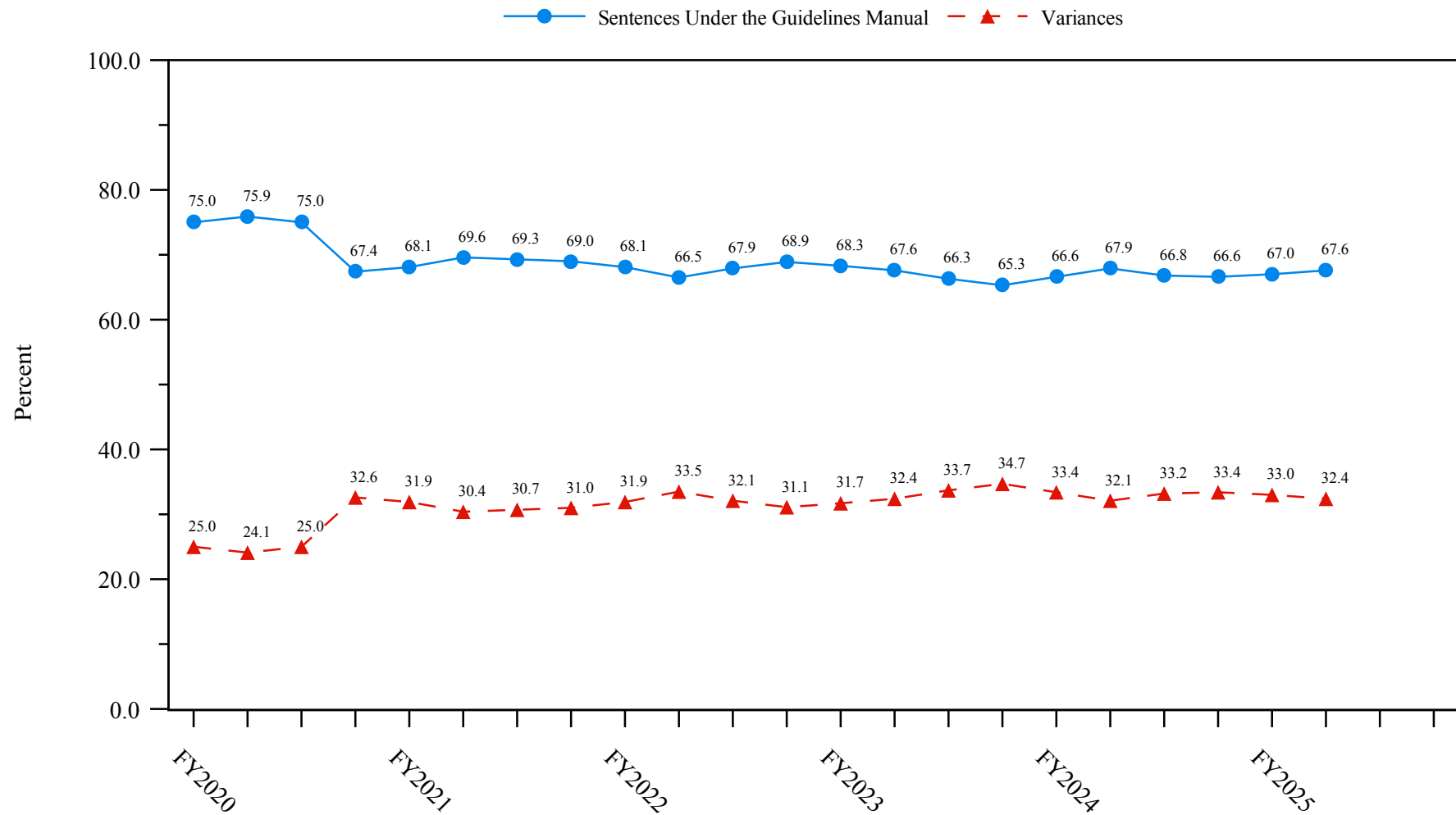
⁶ Cases in which the sentence imposed was below the applicable guideline range and for which the court cited a reason on Part VI of the Statement of Reasons form, and where the prosecution initiated, proposed, or stipulated to the sentence.

⁷ Cases in which the sentence imposed was below the applicable guideline range and for which the court cited a reason on Part VI of the Statement of Reasons form, or where no reason was given, and where the prosecution did not initiate, propose, or stipulate to the sentence.

SOURCE: U.S. Sentencing Commission, Preliminary 2025 Datafile, USSCFY25 (October 1, 2024, through March 31, 2025).

Figure 3**SENTENCES UNDER THE GUIDELINES MANUAL AND VARIANCES QUARTERLY DATA¹**

**Fiscal Years 2020 - 2024,
2nd Quarter 2025 Preliminary Cumulative Data (October 1, 2024, through March 31, 2025)**



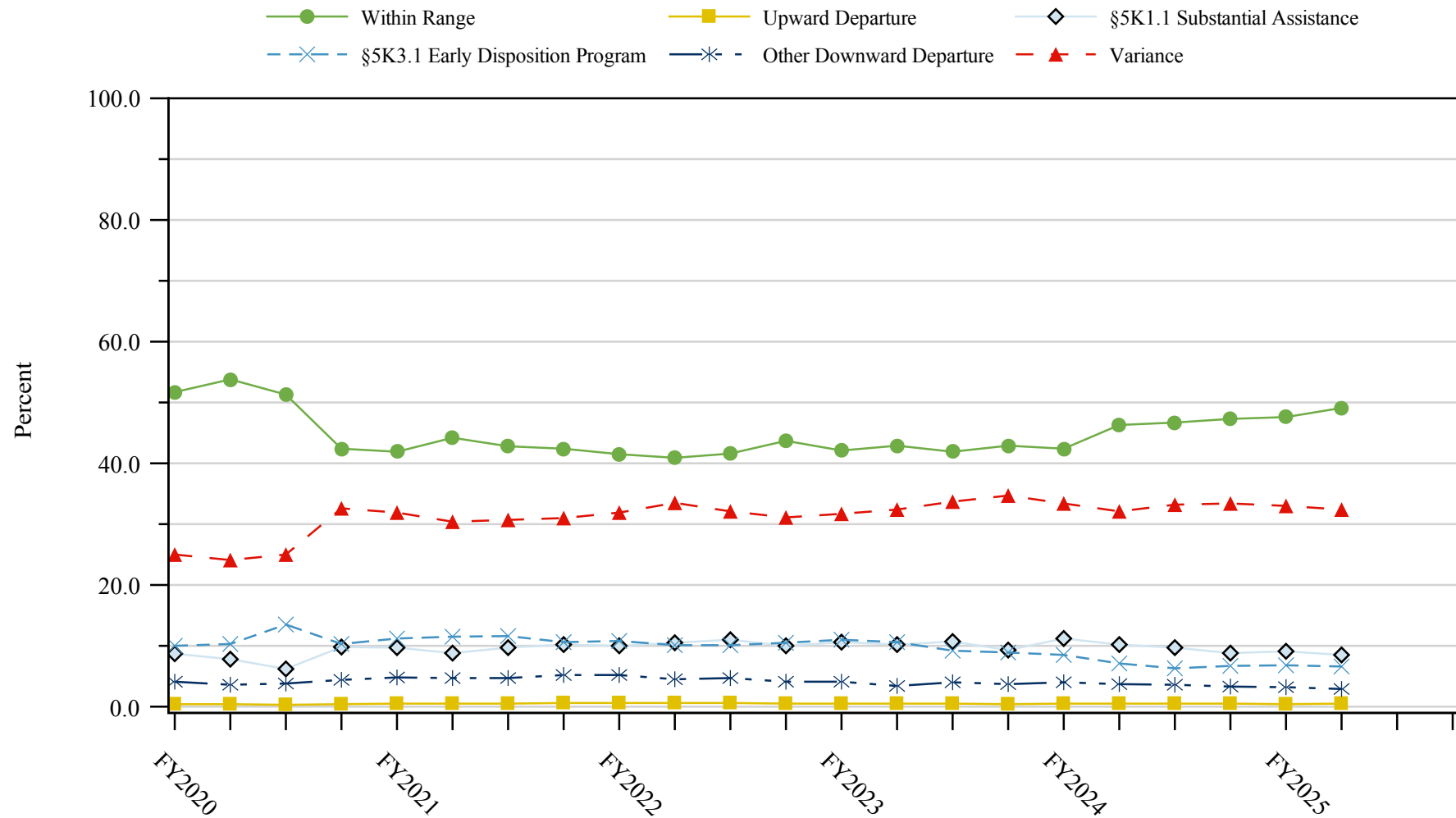
¹ Descriptions of variables used in this figure are provided in Appendix A.

SOURCE: U.S. Sentencing Commission, 2020 - 2024 Datafiles, USSCFY20 - USSCFY24, and Preliminary Data from USSCFY25 (October 1, 2024, through March 31, 2025).

Figure 4

SENTENCE IMPOSED RELATIVE TO THE GUIDELINE RANGE QUARTERLY DATA¹

Fiscal Years 2020 - 2024,
2nd Quarter 2025 Preliminary Cumulative Data (October 1, 2024, through March 31, 2025)



¹ Descriptions of variables used in this figure are provided in Appendix A.

SOURCE: U.S. Sentencing Commission, 2020 - 2024 Datafiles, USSCFY20 - USSCFY24, and Preliminary Data from USSCFY25 (October 1, 2024, through March 31, 2025).

Table 9

**SENTENCE IMPOSED RELATIVE TO THE GUIDELINE RANGE
IN EACH CIRCUIT AND DISTRICT¹**

2nd Quarter 2025 Preliminary Cumulative Data (October 1, 2024, through March 31, 2025)

CIRCUIT	TOTAL	WITHIN GUIDELINE RANGE		DEPARTURE								VARIANCE	
		N	%	UPWARD		\$5K1.1		\$5K3.1		DOWNWARD		N	%
District				N	%	N	%	N	%	N	%		
TOTAL	30,414	14,710	48.4	131	0.4	2,668	8.8	2,037	6.7	924	3.0	9,944	32.7
D.C. CIRCUIT	233	102	43.8	3	1.3	23	9.9	0	0.0	4	1.7	101	43.3
District of Columbia	233	102	43.8	3	1.3	23	9.9	0	0.0	4	1.7	101	43.3
FIRST CIRCUIT	901	326	36.2	3	0.3	97	10.8	2	0.2	32	3.6	441	48.9
Maine	80	27	33.8	0	0.0	18	22.5	0	0.0	3	3.8	32	40.0
Massachusetts	247	54	21.9	1	0.4	34	13.8	2	0.8	14	5.7	142	57.5
New Hampshire	68	14	20.6	0	0.0	10	14.7	0	0.0	3	4.4	41	60.3
Puerto Rico	452	216	47.8	2	0.4	32	7.1	0	0.0	12	2.7	190	42.0
Rhode Island	54	15	27.8	0	0.0	3	5.6	0	0.0	0	0.0	36	66.7
SECOND CIRCUIT	1,406	404	28.7	2	0.1	250	17.8	0	0.0	50	3.6	700	49.8
Connecticut	134	24	17.9	1	0.7	22	16.4	0	0.0	18	13.4	69	51.5
New York													
Eastern	296	63	21.3	1	0.3	56	18.9	0	0.0	18	6.1	158	53.4
Northern	187	102	54.5	0	0.0	37	19.8	0	0.0	6	3.2	42	22.5
Southern	470	114	24.3	0	0.0	60	12.8	0	0.0	8	1.7	288	61.3
Western	211	77	36.5	0	0.0	53	25.1	0	0.0	0	0.0	81	38.4
Vermont	108	24	22.2	0	0.0	22	20.4	0	0.0	0	0.0	62	57.4
THIRD CIRCUIT	1,105	411	37.2	3	0.3	211	19.1	5	0.5	14	1.3	461	41.7
Delaware	54	26	48.1	1	1.9	5	9.3	4	7.4	0	0.0	18	33.3
New Jersey	385	98	25.5	1	0.3	98	25.5	0	0.0	1	0.3	187	48.6
Pennsylvania													
Eastern	224	94	42.0	0	0.0	36	16.1	0	0.0	7	3.1	87	38.8
Middle	194	82	42.3	0	0.0	42	21.6	1	0.5	5	2.6	64	33.0
Western	218	93	42.7	1	0.5	28	12.8	0	0.0	1	0.5	95	43.6
Virgin Islands	30	18	60.0	0	0.0	2	6.7	0	0.0	0	0.0	10	33.3
FOURTH CIRCUIT	2,028	953	47.0	10	0.5	251	12.4	1	0.0	36	1.8	777	38.3
Maryland	191	54	28.3	4	2.1	34	17.8	0	0.0	8	4.2	91	47.6
North Carolina													
Eastern	420	260	61.9	1	0.2	87	20.7	0	0.0	3	0.7	69	16.4
Middle	156	79	50.6	0	0.0	7	4.5	1	0.6	1	0.6	68	43.6
Western	156	71	45.5	1	0.6	19	12.2	0	0.0	2	1.3	63	40.4
South Carolina	284	102	35.9	1	0.4	50	17.6	0	0.0	7	2.5	124	43.7
Virginia													
Eastern	413	220	53.3	2	0.5	20	4.8	0	0.0	10	2.4	161	39.0
Western	134	41	30.6	0	0.0	23	17.2	0	0.0	2	1.5	68	50.7
West Virginia													
Northern	169	79	46.7	0	0.0	7	4.1	0	0.0	0	0.0	83	49.1
Southern	105	47	44.8	1	1.0	4	3.8	0	0.0	3	2.9	50	47.6

Table 9 (cont.)

CIRCUIT	TOTAL	WITHIN GUIDELINE		DEPARTURE								VARIANCE	
		RANGE		UPWARD		\$5K1.1		\$5K3.1		DOWNWARD			
		N	%	N	%	N	%	N	%	N	%	N	%
FIFTH CIRCUIT	9,566	6,744	70.5	42	0.4	363	3.8	113	1.2	278	2.9	2,026	21.2
Louisiana													
Eastern	154	106	68.8	4	2.6	13	8.4	0	0.0	1	0.6	30	19.5
Middle	50	34	68.0	0	0.0	6	12.0	0	0.0	0	0.0	10	20.0
Western	159	107	67.3	7	4.4	20	12.6	0	0.0	2	1.3	23	14.5
Mississippi													
Northern	100	47	47.0	1	1.0	15	15.0	0	0.0	3	3.0	34	34.0
Southern	174	108	62.1	0	0.0	18	10.3	0	0.0	2	1.1	46	26.4
Texas													
Eastern	487	291	59.8	8	1.6	31	6.4	0	0.0	6	1.2	151	31.0
Northern	603	407	67.5	6	1.0	46	7.6	0	0.0	7	1.2	137	22.7
Southern	3,500	2,325	66.4	14	0.4	127	3.6	103	2.9	229	6.5	702	20.1
Western	4,339	3,319	76.5	2	0.0	87	2.0	10	0.2	28	0.6	893	20.6
SIXTH CIRCUIT	1,998	685	34.3	10	0.5	300	15.0	7	0.4	106	5.3	890	44.5
Kentucky													
Eastern	176	89	50.6	3	1.7	31	17.6	0	0.0	6	3.4	47	26.7
Western	190	57	30.0	2	1.1	36	18.9	5	2.6	9	4.7	81	42.6
Michigan													
Eastern	353	112	31.7	1	0.3	25	7.1	0	0.0	18	5.1	197	55.8
Western	121	65	53.7	1	0.8	11	9.1	0	0.0	8	6.6	36	29.8
Ohio													
Northern	347	103	29.7	0	0.0	54	15.6	0	0.0	11	3.2	179	51.6
Southern	258	52	20.2	1	0.4	39	15.1	2	0.8	47	18.2	117	45.3
Tennessee													
Eastern	226	96	42.5	0	0.0	56	24.8	0	0.0	1	0.4	73	32.3
Middle	150	33	22.0	0	0.0	25	16.7	0	0.0	4	2.7	88	58.7
Western	177	78	44.1	2	1.1	23	13.0	0	0.0	2	1.1	72	40.7
SEVENTH CIRCUIT	1,010	358	35.4	2	0.2	95	9.4	0	0.0	42	4.2	513	50.8
Illinois													
Central	105	25	23.8	0	0.0	17	16.2	0	0.0	3	2.9	60	57.1
Northern	271	83	30.6	0	0.0	13	4.8	0	0.0	18	6.6	157	57.9
Southern	114	63	55.3	1	0.9	15	13.2	0	0.0	9	7.9	26	22.8
Indiana													
Northern	129	71	55.0	0	0.0	16	12.4	0	0.0	0	0.0	42	32.6
Southern	155	67	43.2	0	0.0	28	18.1	0	0.0	0	0.0	60	38.7
Wisconsin													
Eastern	171	35	20.5	0	0.0	6	3.5	0	0.0	2	1.2	128	74.9
Western	65	14	21.5	1	1.5	0	0.0	0	0.0	10	15.4	40	61.5
EIGHTH CIRCUIT	2,185	898	41.1	16	0.7	284	13.0	12	0.5	28	1.3	947	43.3
Arkansas													
Eastern	266	134	50.4	0	0.0	26	9.8	0	0.0	0	0.0	106	39.8
Western	87	34	39.1	0	0.0	8	9.2	0	0.0	1	1.1	44	50.6
Iowa													
Northern	148	67	45.3	6	4.1	27	18.2	0	0.0	1	0.7	47	31.8
Southern	176	65	36.9	0	0.0	16	9.1	0	0.0	1	0.6	94	53.4
Minnesota	193	54	28.0	2	1.0	34	17.6	0	0.0	12	6.2	91	47.2
Missouri													
Eastern	464	190	40.9	0	0.0	51	11.0	0	0.0	3	0.6	220	47.4
Western	272	96	35.3	1	0.4	54	19.9	0	0.0	1	0.4	120	44.1
Nebraska	213	97	45.5	1	0.5	5	2.3	11	5.2	2	0.9	97	45.5
North Dakota	154	47	30.5	3	1.9	61	39.6	1	0.6	2	1.3	40	26.0
South Dakota	212	114	53.8	3	1.4	2	0.9	0	0.0	5	2.4	88	41.5

Table 9 (cont.)

CIRCUIT	TOTAL	WITHIN GUIDELINE		DEPARTURE								VARIANCE	
		RANGE		UPWARD		\$5K1.1		\$5K3.1		DOWNWARD			
		N	%	N	%	N	%	N	%	N	%	N	%
NINTH CIRCUIT	5,077	1,451	28.6	12	0.2	393	7.7	1,551	30.5	212	4.2	1,458	28.7
Alaska	70	27	38.6	0	0.0	4	5.7	0	0.0	3	4.3	36	51.4
Arizona	1,965	665	33.8	4	0.2	51	2.6	861	43.8	30	1.5	354	18.0
California													
Central	356	119	33.4	2	0.6	42	11.8	1	0.3	26	7.3	166	46.6
Eastern	229	71	31.0	2	0.9	49	21.4	3	1.3	4	1.7	100	43.7
Northern	176	21	11.9	0	0.0	19	10.8	0	0.0	9	5.1	127	72.2
Southern	1,274	283	22.2	1	0.1	53	4.2	670	52.6	126	9.9	141	11.1
Guam	13	5	38.5	0	0.0	3	23.1	0	0.0	0	0.0	5	38.5
Hawaii	65	17	26.2	0	0.0	27	41.5	0	0.0	0	0.0	21	32.3
Idaho	146	52	35.6	0	0.0	26	17.8	3	2.1	4	2.7	61	41.8
Montana	179	55	30.7	1	0.6	38	21.2	0	0.0	2	1.1	83	46.4
Nevada	88	13	14.8	0	0.0	5	5.7	11	12.5	3	3.4	56	63.6
Northern Mariana Islands	6	5	83.3	1	16.7	0	0.0	0	0.0	0	0.0	0	0.0
Oregon	199	42	21.1	1	0.5	39	19.6	0	0.0	2	1.0	115	57.8
Washington													
Eastern	135	34	25.2	0	0.0	33	24.4	1	0.7	2	1.5	65	48.1
Western	176	42	23.9	0	0.0	4	2.3	1	0.6	1	0.6	128	72.7
TENTH CIRCUIT	2,414	1,027	42.5	26	1.1	153	6.3	343	14.2	100	4.1	765	31.7
Colorado	172	47	27.3	1	0.6	35	20.3	6	3.5	2	1.2	81	47.1
Kansas	185	74	40.0	2	1.1	26	14.1	6	3.2	9	4.9	68	36.8
New Mexico	933	433	46.4	11	1.2	29	3.1	261	28.0	46	4.9	153	16.4
Oklahoma													
Eastern	127	84	66.1	1	0.8	12	9.4	0	0.0	1	0.8	29	22.8
Northern	262	144	55.0	7	2.7	19	7.3	0	0.0	28	10.7	64	24.4
Western	294	126	42.9	0	0.0	11	3.7	0	0.0	0	0.0	157	53.4
Utah	334	65	19.5	2	0.6	13	3.9	58	17.4	9	2.7	187	56.0
Wyoming	107	54	50.5	2	1.9	8	7.5	12	11.2	5	4.7	26	24.3
ELEVENTH CIRCUIT	2,491	1,351	54.2	2	0.1	248	10.0	3	0.1	22	0.9	865	34.7
Alabama													
Middle	107	44	41.1	0	0.0	11	10.3	0	0.0	2	1.9	50	46.7
Northern	249	162	65.1	0	0.0	31	12.4	0	0.0	2	0.8	54	21.7
Southern	145	84	57.9	0	0.0	34	23.4	1	0.7	4	2.8	22	15.2
Florida													
Middle	715	344	48.1	1	0.1	91	12.7	0	0.0	0	0.0	279	39.0
Northern	118	48	40.7	0	0.0	12	10.2	2	1.7	4	3.4	52	44.1
Southern	625	373	59.7	0	0.0	30	4.8	0	0.0	3	0.5	219	35.0
Georgia													
Middle	193	134	69.4	0	0.0	6	3.1	0	0.0	3	1.6	50	25.9
Northern	198	52	26.3	0	0.0	19	9.6	0	0.0	4	2.0	123	62.1
Southern	141	110	78.0	1	0.7	14	9.9	0	0.0	0	0.0	16	11.3

¹ Of the 30,526 cases, 112 were excluded because information was missing from the submitted documents that prevented the comparison of the sentence and the guideline range. Descriptions of variables used in this table are provided in Appendix A.

SOURCE: U.S. Sentencing Commission, Preliminary 2025 Datafile, USSCFY25 (October 1, 2024, through March 31, 2025).

Table 10

**SENTENCE IMPOSED RELATIVE TO THE GUIDELINE RANGE
BY TYPE OF CRIME¹**

2nd Quarter 2025 Preliminary Cumulative Data (October 1, 2024, through March 31, 2025)

TYPE OF CRIME	TOTAL	WITHIN		DEPARTURE								VARIANCE	
		GUIDELINE		UPWARD		\$5K1.1		\$5K3.1		DOWNWARD			
		RANGE		N	%	N	%	N	%	N	%	N	%
TOTAL	30,414	14,710	48.4	131	0.4	2,668	8.8	2,037	6.7	924	3.0	9,944	32.7
Administration of Justice	294	147	50.0	3	1.0	16	5.4	0	0.0	10	3.4	118	40.1
Antitrust	6	4	66.7	0	0.0	2	33.3	0	0.0	0	0.0	0	0.0
Arson	44	22	50.0	2	4.5	5	11.4	0	0.0	2	4.5	13	29.5
Assault	415	184	44.3	11	2.7	12	2.9	0	0.0	13	3.1	195	47.0
Bribery/Corruption	172	32	18.6	0	0.0	45	26.2	1	0.6	9	5.2	85	49.4
Burglary/Trespass	22	16	72.7	0	0.0	1	4.5	0	0.0	0	0.0	5	22.7
Child Pornography	694	257	37.0	2	0.3	12	1.7	0	0.0	20	2.9	403	58.1
Commercialized Vice	42	22	52.4	3	7.1	2	4.8	0	0.0	0	0.0	15	35.7
Drug Possession	31	26	83.9	0	0.0	0	0.0	0	0.0	0	0.0	5	16.1
Drug Trafficking	8,063	2,326	28.8	27	0.3	1,563	19.4	372	4.6	292	3.6	3,483	43.2
Environmental	73	38	52.1	0	0.0	11	15.1	0	0.0	3	4.1	21	28.8
Extortion/Racketeering	35	14	40.0	0	0.0	6	17.1	0	0.0	0	0.0	15	42.9
Firearms	3,917	1,986	50.7	29	0.7	197	5.0	2	0.1	114	2.9	1,589	40.6
Food and Drug	19	14	73.7	0	0.0	0	0.0	0	0.0	0	0.0	5	26.3
Forgery/Counter/Copyright	46	19	41.3	0	0.0	4	8.7	0	0.0	6	13.0	17	37.0
Fraud/Theft/Embezzlement	2,513	1,095	43.6	3	0.1	354	14.1	4	0.2	56	2.2	1,001	39.8
Immigration	10,562	6,973	66.0	22	0.2	89	0.8	1,652	15.6	264	2.5	1,562	14.8
Individual Rights	33	14	42.4	0	0.0	1	3.0	0	0.0	0	0.0	18	54.5
Kidnapping	67	21	31.3	1	1.5	12	17.9	0	0.0	6	9.0	27	40.3
Manslaughter	36	17	47.2	2	5.6	0	0.0	0	0.0	1	2.8	16	44.4
Money Laundering	656	190	29.0	1	0.2	153	23.3	5	0.8	32	4.9	275	41.9
Murder	211	76	36.0	7	3.3	46	21.8	0	0.0	15	7.1	67	31.8
National Defense	143	63	44.1	0	0.0	17	11.9	0	0.0	5	3.5	58	40.6
Obscenity/Other Sex Offenses	162	75	46.3	1	0.6	1	0.6	0	0.0	4	2.5	81	50.0
Prison Offenses	192	120	62.5	0	0.0	3	1.6	0	0.0	7	3.6	62	32.3
Robbery	627	255	40.7	10	1.6	51	8.1	0	0.0	27	4.3	284	45.3
Sexual Abuse	667	289	43.3	6	0.9	31	4.6	1	0.1	25	3.7	315	47.2
Stalking/Harassing	129	48	37.2	1	0.8	1	0.8	0	0.0	5	3.9	74	57.4
Tax	208	45	21.6	0	0.0	31	14.9	0	0.0	8	3.8	124	59.6
Other	335	322	96.1	0	0.0	2	0.6	0	0.0	0	0.0	11	3.3

¹ Of the 30,526 cases, 112 were excluded because information was missing from the submitted documents that prevented the comparison of the sentence and the guideline range. Descriptions of variables used in this table are provided in Appendix A.

SOURCE: U.S. Sentencing Commission, Preliminary 2025 Datafile, USSCFY25 (October 1, 2024, through March 31, 2025).

Table 11

SENTENCE IMPOSED RELATIVE TO THE GUIDELINE RANGE BY PRIMARY SENTENCING GUIDELINE¹

2nd Quarter 2025 Preliminary Cumulative Data (October 1, 2024, through March 31, 2025)

Guideline	Within Guideline		Departure				Variance	Guideline	Within Guideline		Departure				Variance
	Total	Range	Up	\$5K1.1	\$5K3.1	Down			Total	Range	Up	\$5K1.1	\$5K3.1	Down	
§2A1.1	138	50	1	32	0	8	47	§2D1.8	5	1	0	2	0	0	2
§2A1.2	48	15	6	6	0	6	15	§2D1.9	0	0	0	0	0	0	0
§2A1.3	18	9	2	0	0	1	6	§2D1.10	0	0	0	0	0	0	0
§2A1.4	18	8	0	0	0	0	10	§2D1.11	1	0	0	1	0	0	0
§2A1.5	15	7	0	5	0	1	2	§2D1.12	1	0	0	1	0	0	0
§2A2.1	103	47	0	8	0	2	46	§2D1.13	0	0	0	0	0	0	0
§2A2.2	264	112	10	2	0	11	129	§2D1.14	0	0	0	0	0	0	0
§2A2.3	31	18	1	0	0	0	12	§2D2.1	22	18	0	0	0	0	4
§2A2.4	126	73	2	0	0	5	46	§2D2.2	12	10	0	0	0	0	2
§2A3.1	66	28	1	2	0	4	31	§2D2.3	0	0	0	0	0	0	0
§2A3.2	13	8	2	0	0	0	3	§2D3.1	3	3	0	0	0	0	0
§2A3.3	3	0	0	1	0	0	2	§2D3.2	0	0	0	0	0	0	0
§2A3.4	17	8	1	0	0	0	8	§2D3.3	0	0	0	0	0	0	0
§2A3.5	142	71	0	0	0	4	67	§2D3.4	0	0	0	0	0	0	0
§2A4.1	64	21	1	12	0	6	24	§2D3.5	0	0	0	0	0	0	0
§2A4.2	0	0	0	0	0	0	0	§2E1.1	5	2	0	1	0	0	2
§2A5.1	0	0	0	0	0	0	0	§2E1.2	1	1	0	0	0	0	0
§2A5.2	14	9	0	0	0	0	5	§2E1.3	0	0	0	0	0	0	0
§2A5.3	0	0	0	0	0	0	0	§2E1.4	1	0	0	0	0	0	1
§2A6.1	74	27	0	1	0	4	42	§2E1.5	0	0	0	0	0	0	0
§2A6.2	50	20	1	0	0	1	28	§2E2.1	2	0	0	1	0	0	1
§2B1.1	2,389	1,008	3	345	4	53	976	§2E3.1	32	18	3	1	0	0	10
§2B1.2	0	0	0	0	0	0	0	§2E3.2	0	0	0	0	0	0	0
§2B1.3	0	0	0	0	0	0	0	§2E3.3	0	0	0	0	0	0	0
§2B1.4	16	0	0	2	0	1	13	§2E4.1	4	1	0	3	0	0	0
§2B1.5	13	3	0	3	0	0	7	§2E5.1	1	1	0	0	0	0	0
§2B1.6 ²	25	24	0	1	0	0	0	§2E5.2	0	0	0	0	0	0	0
§2B2.1	10	4	0	1	0	0	5	§2E5.3	0	0	0	0	0	0	0
§2B2.2	0	0	0	0	0	0	0	§2E5.4	0	0	0	0	0	0	0
§2B2.3	10	10	0	0	0	0	0	§2E5.5	0	0	0	0	0	0	0
§2B3.1	618	252	10	50	0	27	279	§2E5.6	0	0	0	0	0	0	0
§2B3.2	16	8	0	1	0	0	7	§2F1.1	0	0	0	0	0	0	0
§2B3.3	2	0	0	0	0	0	2	§2F1.2	0	0	0	0	0	0	0
§2B4.1	54	10	0	24	0	0	20	§2G1.1	21	9	0	2	0	1	9
§2B5.1	29	15	0	2	0	5	7	§2G1.2	0	0	0	0	0	0	0
§2B5.2	0	0	0	0	0	0	0	§2G1.3	183	93	1	11	1	3	74
§2B5.3	17	4	0	2	0	1	10	§2G2.1	368	146	1	15	0	16	190
§2B5.4	0	0	0	0	0	0	0	§2G2.2	693	257	2	12	0	20	402
§2B6.1	1	0	0	1	0	0	0	§2G2.3	0	0	0	0	0	0	0
§2C1.1	115	21	0	21	1	9	63	§2G2.4	0	0	0	0	0	0	0
§2C1.2	1	0	0	0	0	0	1	§2G2.5	0	0	0	0	0	0	0
§2C1.3	1	1	0	0	0	0	0	§2G2.6	0	0	0	0	0	0	0
§2C1.4	0	0	0	0	0	0	0	§2G3.1	18	2	1	1	0	0	14
§2C1.5	0	0	0	0	0	0	0	§2G3.2	0	0	0	0	0	0	0
§2C1.6	0	0	0	0	0	0	0	§2H1.1	23	7	0	1	0	0	15
§2C1.7	0	0	0	0	0	0	0	§2H1.2	0	0	0	0	0	0	0
§2C1.8	0	0	0	0	0	0	0	§2H1.3	0	0	0	0	0	0	0
§2D1.1	7,948	2,294	27	1,551	372	287	3,417	§2H1.4	0	0	0	0	0	0	0
§2D1.2	64	26	0	6	0	4	28	§2H1.5	0	0	0	0	0	0	0
§2D1.3	0	0	0	0	0	0	0	§2H2.1	2	1	0	0	0	0	1
§2D1.4	0	0	0	0	0	0	0	§2H3.1	2	2	0	0	0	0	0
§2D1.5	6	2	0	3	0	0	1	§2H3.2	0	0	0	0	0	0	0
§2D1.6	0	0	0	0	0	0	0	§2H3.3	3	3	0	0	0	0	0
§2D1.7	1	1	0	0	0	0	0	§2H4.1	2	1	0	0	0	0	1

Table 11 (cont.)

Guideline	Within Guideline				Departure				Variance	Guideline	Within Guideline				Departure				Variance
	Total	Range	Up	\$5K1.1	\$5K3.1	Down	Up	\$5K1.1			\$5K3.1	Down							
§2H4.2	0	0	0	0	0	0	0	0	§2M5.2	89	26	0	11	0	4	48			
§2J1.1	0	0	0	0	0	0	0	0	§2M5.3	4	0	0	1	0	0	3			
§2J1.2	65	26	0	12	0	1	26		§2M6.1	4	1	0	2	0	0	1			
§2J1.3	2	0	0	0	0	1	1		§2M6.2	0	0	0	0	0	0	0			
§2J1.4	6	3	0	0	0	0	3		§2N1.1	4	0	0	0	0	0	4			
§2J1.5	1	0	0	0	0	0	1		§2N1.2	0	0	0	0	0	0	0			
§2J1.6	14	7	0	0	0	1	6		§2N1.3	0	0	0	0	0	0	0			
§2J1.7	0	0	0	0	0	0	0		§2N2.1	13	12	0	0	0	0	1			
§2J1.8	0	0	0	0	0	0	0		§2N3.1	0	0	0	0	0	0	0			
§2J1.9	0	0	0	0	0	0	0		§2P1.1	131	92	0	1	0	4	34			
§2K1.1	2	2	0	0	0	0	0		§2P1.2	52	24	0	2	0	2	24			
§2K1.2	0	0	0	0	0	0	0		§2P1.3	0	0	0	0	0	0	0			
§2K1.3	8	3	0	2	0	0	3		§2P1.4	0	0	0	0	0	0	0			
§2K1.4	43	22	2	5	0	2	12		§2Q1.1	0	0	0	0	0	0	0			
§2K1.5	1	0	0	0	0	0	1		§2Q1.2	16	5	0	5	0	0	6			
§2K1.6	0	0	0	0	0	0	0		§2Q1.3	7	2	0	2	0	2	1			
§2K1.7	0	0	0	0	0	0	0		§2Q1.4	0	0	0	0	0	0	0			
§2K2.1	3,741	1,867	24	186	2	112	1,550		§2Q1.5	0	0	0	0	0	0	0			
§2K2.2	0	0	0	0	0	0	0		§2Q1.6	0	0	0	0	0	0	0			
§2K2.3	0	0	0	0	0	0	0		§2Q2.1	43	26	0	3	0	1	13			
§2K2.4 ³	138	105	5	8	0	0	20		§2Q2.2	0	0	0	0	0	0	0			
§2K2.5	3	2	0	0	0	0	1		§2R1.1	6	4	0	2	0	0	0			
§2K2.6	0	0	0	0	0	0	0		§2S1.1	567	145	0	145	4	29	244			
§2K3.1	0	0	0	0	0	0	0		§2S1.2	0	0	0	0	0	0	0			
§2K3.2	0	0	0	0	0	0	0		§2S1.3	83	44	1	7	1	3	27			
§2L1.1	2,155	1,129	4	66	541	33	382		§2S1.4	0	0	0	0	0	0	0			
§2L1.2	7,377	4,999	16	19	996	230	1,117		§2T1.1	114	25	0	16	0	7	66			
§2L1.3	0	0	0	0	0	0	0		§2T1.2	0	0	0	0	0	0	0			
§2L2.1	17	13	0	2	0	0	2		§2T1.3	0	0	0	0	0	0	0			
§2L2.2	208	173	0	1	0	0	34		§2T1.4	52	13	0	10	0	0	29			
§2L2.3	0	0	0	0	0	0	0		§2T1.5	0	0	0	0	0	0	0			
§2L2.4	0	0	0	0	0	0	0		§2T1.6	30	3	0	2	0	1	24			
§2L2.5	0	0	0	0	0	0	0		§2T1.7	0	0	0	0	0	0	0			
§2M1.1	0	0	0	0	0	0	0		§2T1.8	0	0	0	0	0	0	0			
§2M2.1	0	0	0	0	0	0	0		§2T1.9	6	1	0	2	0	0	3			
§2M2.2	0	0	0	0	0	0	0		§2T2.1	0	0	0	0	0	0	0			
§2M2.3	0	0	0	0	0	0	0		§2T2.2	0	0	0	0	0	0	0			
§2M2.4	0	0	0	0	0	0	0		§2T3.1	3	1	0	1	0	0	1			
§2M3.1	0	0	0	0	0	0	0		§2T3.2	0	0	0	0	0	0	0			
§2M3.2	1	0	0	0	0	1	0		§2T4.1	0	0	0	0	0	0	0			
§2M3.3	0	0	0	0	0	0	0		§2X1.1	4	0	0	3	0	0	1			
§2M3.4	0	0	0	0	0	0	0		§2X2.1	0	0	0	0	0	0	0			
§2M3.5	0	0	0	0	0	0	0		§2X3.1	41	11	0	8	0	1	21			
§2M3.6	0	0	0	0	0	0	0		§2X4.1	75	37	1	4	0	2	31			
§2M3.7	0	0	0	0	0	0	0		§2X5.1	0	0	0	0	0	0	0			
§2M3.8	0	0	0	0	0	0	0		§2X5.2	84	83	0	0	0	0	1			
§2M3.9	0	0	0	0	0	0	0		§2X6.1	0	0	0	0	0	0	0			
§2M4.1	0	0	0	0	0	0	0		§2X7.1	0	0	0	0	0	0	0			
§2M5.1	10	1	0	3	0	0	6		§2X7.2	0	0	0	0	0	0	0			
TOTAL									29,165	13,697	129	2,665	1,922	917	9,835				

¹ Of the 30,526 cases, 1,361 were excluded due to one or both of the following reasons: information was missing from the submitted documents that prevented the comparison of the sentence and the guideline range (112) or missing guideline applied (1,344). Descriptions of variables used in this table are provided in Appendix A.

² In these cases, the sentenced individual was convicted of violating 18 U.S.C. § 1028A (Aggravated Identity Theft) as the only count or counts of conviction. The *Guidelines Manual* provides punishment for this type of offense under §2B1.6.

³ In these cases, the sentenced individual was convicted of violating 18 U.S.C. § 924(c) (Use of Firearm, Armor-Piercing Ammunition, or Explosives During or in Relation to Certain Crimes) as the only count or counts of conviction. The *Guidelines Manual* provides punishment for this type of offense under §2K2.4.

SOURCE: U.S. Sentencing Commission, Preliminary 2025 Datafile, USSCFY25 (October 1, 2024, through March 31, 2025).

Table 12

ATTRIBUTION CATEGORY FOR SENTENCES OUTSIDE OF THE GUIDELINE RANGE¹
2nd Quarter 2025 Preliminary Cumulative Data (October 1, 2024, through March 31, 2025)

	TOTAL CASES	Pursuant to a Plea Agreement									
		§5K1.1 Substantial Assistance ²		§5K3.1 Early Disposition ²		Binding Plea Accepted by Court		Plea with Departure Court Finds Reasonable		Plea States Gov't Will Not Oppose	
		N	%	N	%	N	%	N	%	N	%
TOTAL	15,704	2,681	17.1	2,060	13.1	2,371	15.1	2,815	17.9	188	1.2
Departures	5,760	2,668	46.3	2,058	35.7	1,333	23.1	1,936	33.6	76	1.3
Upward Departure	131	0	0.0	0	0.0	34	26.0	21	16.0	0	0.0
Downward Departure											
§5K1.1 Substantial Assistance	2,668	2,668	100.0	21	0.8	78	2.9	589	22.1	4	0.1
§5K3.1 Early Disposition Program	2,037	0	0.0	2,037	100.0	1,054	51.7	1,137	55.8	65	3.2
Other Government Motion	441	0	0.0	0	0.0	167	37.9	189	42.9	7	1.6
Non-Government Departure	483	0	0.0	0	0.0	0	0.0	0	0.0	0	0.0
Variances	9,944	13	0.1	2	0.0	1,038	10.4	879	8.8	112	1.1
Upward Variance	1,246	13	1.0	2	0.2	128	10.3	61	4.9	0	0.0
Downward Variance											
Government Motion	3,104	0	0.0	0	0.0	910	29.3	818	26.4	112	3.6
Non-Government Variance	5,594	0	0.0	0	0.0	0	0.0	0	0.0	0	0.0

Table 12 (cont.)

	Pursuant to a Motion Not in a Plea Agreement											
	Other Government Motion		Defense Motion/Gov't Did Not Object		Defense Motion/Gov't Did Object		Joint Motion		Other than a Plea/Motion by Parties		No Information Available	
	N	%	N	%	N	%	N	%	N	%	N	%
TOTAL	2,500	15.9	2,304	14.7	3,561	22.7	1,088	6.9	2,620	16.7	980	6.2
Departures	2,023	35.1	877	15.2	751	13.0	416	7.2	412	7.2	83	1.4
Upward Departure	40	30.5	1	0.8	2	1.5	3	2.3	29	22.1	11	8.4
Downward Departure												
§5K1.1 Substantial Assistance	1,827	68.5	343	12.9	371	13.9	214	8.0	225	8.4	0	0.0
§5K3.1 Early Disposition Program	110	5.4	232	11.4	218	10.7	121	5.9	38	1.9	0	0.0
Other Government Motion	46	10.4	40	9.1	44	10.0	78	17.7	28	6.3	15	3.4
Non-Government Departure	0	0.0	261	54.0	116	24.0	0	0.0	92	19.0	57	11.8
Variances	477	4.8	1,427	14.4	2,810	28.3	672	6.8	2,208	22.2	897	9.0
Upward Variance	192	15.4	3	0.2	6	0.5	11	0.9	727	58.3	142	11.4
Downward Variance												
Government Motion	285	9.2	229	7.4	155	5.0	661	21.3	298	9.6	73	2.4
Non-Government Variance	0	0.0	1,195	21.4	2,649	47.4	0	0.0	1,183	21.1	682	12.2

¹ Multiple attributions may be made on the Statement of Reasons (SOR). Therefore, the numbers reported in this table may exceed the number of total cases. For example, among SORs with an attribution, 5,676 cases indicated more than one attribution. Only sentenced individuals whose sentence is outside the guideline range are included in this table. Descriptions of variables used in this table are provided in Appendix A.

² For cases in which the court submitted a SOR form with a revision date of 11/15 or later, information for these categories was taken from Part V.C. of the SOR. For cases in which the court submitted the prior version of the SOR form, the information was taken from Part V.B. of the SOR form.

SOURCE: U.S. Sentencing Commission, Preliminary 2025 Datafile, USSCFY25 (October 1, 2024, through March 31, 2025).

Table 13

**EXTENT OF UPWARD DEPARTURES
BY TYPE OF CRIME¹**

2nd Quarter 2025 Preliminary Cumulative Data (October 1, 2024, through March 31, 2025)

TYPE OF CRIME	N	Mean			Median		
		Sentence In Months	Increase In Months	Percent Increase	Sentence In Months	Increase In Months	Percent Increase
TOTAL	129	122	46	114.1	84	23	50.0
Administration of Justice	3	20	10	94.4	15	9	100.0
Antitrust	0	--	--	--	--	--	--
Arson	2	--	--	--	--	--	--
Assault	11	100	44	89.5	96	45	88.2
Bribery/Corruption	0	--	--	--	--	--	--
Burglary/Trespass	0	--	--	--	--	--	--
Child Pornography	2	--	--	--	--	--	--
Commercialized Vice	3	18	3	15.9	15	1	7.1
Drug Possession	0	--	--	--	--	--	--
Drug Trafficking	27	137	57	232.8	120	31	71.4
Environmental	0	--	--	--	--	--	--
Extortion/Racketeering	0	--	--	--	--	--	--
Firearms	29	90	28	65.1	78	21	33.3
Food and Drug	0	--	--	--	--	--	--
Forgery/Counter/Copyright	0	--	--	--	--	--	--
Fraud/Theft/Embezzlement	3	171	110	252.6	181	60	220.0
Immigration	22	35	17	86.9	24	6	50.0
Individual Rights	0	--	--	--	--	--	--
Kidnapping	1	--	--	--	--	--	--
Manslaughter	2	--	--	--	--	--	--
Money Laundering	1	--	--	--	--	--	--
Murder	6	404	140	61.2	420	148	63.2
National Defense	0	--	--	--	--	--	--
Obscenity/Other Sex Offenses	1	--	--	--	--	--	--
Prison Offenses	0	--	--	--	--	--	--
Robbery	9	228	66	40.3	240	60	35.1
Sexual Abuse	6	207	79	79.2	210	84	97.6
Stalking/Harassing	1	--	--	--	--	--	--
Tax	0	--	--	--	--	--	--
Other	0	--	--	--	--	--	--

¹ Of the 30,526 cases, in 131 the sentence was an upward departure from the guideline range. Due to an inability to calculate the extent of departure for cases with a sentence of life, two cases were excluded from this table. Sentences greater than 470 months and probation were included in the sentence average computations as 470 months and zero months, respectively. The information in this table includes conditions of confinement as described in USSG §5C1.1. Descriptions of variables used in this table are provided in Appendix A.

SOURCE: U.S. Sentencing Commission, Preliminary 2025 Datafile, USSCFY25 (October 1, 2024, through March 31, 2025).

Table 14

**EXTENT OF UPWARD VARIANCES
BY TYPE OF CRIME¹**

2nd Quarter 2025 Preliminary Cumulative Data (October 1, 2024, through March 31, 2025)

TYPE OF CRIME	N	Mean			Median		
		Sentence In Months	Increase In Months	Percent Increase	Sentence In Months	Increase In Months	Percent Increase
TOTAL	1,234	63	21	70.8	36	9	42.9
Administration of Justice	23	38	14	64.1	32	11	56.5
Antitrust	0	--	--	--	--	--	--
Arson	4	77	14	30.9	72	15	31.9
Assault	27	147	68	94.4	120	48	53.9
Bribery/Corruption	1	--	--	--	--	--	--
Burglary/Trespass	1	--	--	--	--	--	--
Child Pornography	19	204	68	56.4	180	36	43.7
Commercialized Vice	1	--	--	--	--	--	--
Drug Possession	1	--	--	--	--	--	--
Drug Trafficking	129	118	38	88.5	114	23	30.0
Environmental	0	--	--	--	--	--	--
Extortion/Racketeering	2	--	--	--	--	--	--
Firearms	225	88	27	60.6	82	19	33.3
Food and Drug	0	--	--	--	--	--	--
Forgery/Counter/Copyright	3	64	30	79.9	48	15	45.5
Fraud/Theft/Embezzlement	51	74	26	85.8	60	9	46.3
Immigration	629	21	7	64.9	14	4	50.0
Individual Rights	0	--	--	--	--	--	--
Kidnapping	1	--	--	--	--	--	--
Manslaughter	9	104	33	47.7	84	28	35.9
Money Laundering	11	103	39	63.6	90	12	50.0
Murder	7	318	57	31.6	360	51	28.8
National Defense	0	--	--	--	--	--	--
Obscenity/Other Sex Offenses	16	63	38	298.4	57	23	90.9
Prison Offenses	7	36	22	190.3	30	20	200.0
Robbery	30	178	42	36.5	180	30	26.7
Sexual Abuse	21	178	45	59.1	144	49	27.7
Stalking/Harassing	12	64	24	69.5	56	21	74.8
Tax	4	47	16	53.7	48	18	43.1
Other	0	--	--	--	--	--	--

¹ Of the 30,526 cases, in 1,246 the sentence was a variance above the guideline range. Due to an inability to calculate the extent of departure for cases with a sentence of life, four cases were excluded from this table. Also, eight cases were excluded due to several logical criteria. Sentences greater than 470 months and probation were included in the sentence average computations as 470 months and zero months, respectively. The information in this table includes conditions of confinement as described in USSG §5C1.1. Descriptions of variables used in this table are provided in Appendix A.

SOURCE: U.S. Sentencing Commission, Preliminary 2025 Datafile, USSCFY25 (October 1, 2024, through March 31, 2025).

Table 15

**EXTENT OF §5K1.1 SUBSTANTIAL ASSISTANCE DEPARTURES
BY TYPE OF CRIME¹**

2nd Quarter 2025 Preliminary Cumulative Data (October 1, 2024, through March 31, 2025)

TYPE OF CRIME	N	Mean			Median		
		Sentence In Months	Decrease In Months	Percent Decrease	Sentence In Months	Decrease In Months	Percent Decrease
TOTAL	2,600	53	54	56.0	36	37	50.0
Administration of Justice	16	3	12	83.3	0	11	99.8
Antitrust	2	--	--	--	--	--	--
Arson	5	30	41	55.5	24	42	70.0
Assault	9	78	61	42.7	51	31	34.3
Bribery/Corruption	45	13	28	77.4	0	18	99.8
Burglary/Trespass	1	--	--	--	--	--	--
Child Pornography	11	106	59	40.4	96	59	42.9
Commercialized Vice	2	--	--	--	--	--	--
Drug Possession	0	--	--	--	--	--	--
Drug Trafficking	1,533	68	63	50.8	60	48	47.4
Environmental	11	1	10	94.8	0	8	99.8
Extortion/Racketeering	6	30	30	84.0	0	30	99.9
Firearms	197	29	29	56.9	20	21	49.9
Food and Drug	0	--	--	--	--	--	--
Forgery/Counter/Copyright	4	9	25	68.0	6	26	69.3
Fraud/Theft/Embezzlement	353	16	34	71.1	7	21	73.9
Immigration	89	18	14	46.9	15	12	45.6
Individual Rights	1	--	--	--	--	--	--
Kidnapping	11	112	112	49.1	121	114	49.6
Manslaughter	0	--	--	--	--	--	--
Money Laundering	144	41	69	66.9	19	45	63.8
Murder	26	115	134	54.7	121	137	56.1
National Defense	17	15	49	68.4	18	40	70.3
Obscenity/Other Sex Offenses	1	--	--	--	--	--	--
Prison Offenses	3	14	12	38.8	14	5	33.3
Robbery	50	80	57	46.5	62	46	43.6
Sexual Abuse	29	136	85	42.8	102	60	41.7
Stalking/Harassing	1	--	--	--	--	--	--
Tax	31	19	17	73.0	0	12	99.8
Other	2	--	--	--	--	--	--

¹ Of the 30,526 cases, in 2,668 the sentenced individual received a §5K1.1 substantial assistance departure below the guideline range. Due to an inability to calculate the extent of departure for cases with a guideline minimum of life, 39 cases were excluded from this table. Also, 29 cases were excluded due to several logical criteria. Sentences greater than 470 months and probation were included in the sentence average computations as 470 months and zero months, respectively. The information in this table includes conditions of confinement as described in USSG §5C1.1. Descriptions of variables used in this table are provided in Appendix A.

Table 16

**EXTENT OF §5K3.1 EARLY DISPOSITION PROGRAM DEPARTURES
BY TYPE OF CRIME¹
2nd Quarter 2025 Preliminary Cumulative Data (October 1, 2024, through March 31, 2025)**

TYPE OF CRIME	N	Mean			Median		
		Sentence In Months	Decrease In Months	Percent Decrease	Sentence In Months	Decrease In Months	Percent Decrease
TOTAL	2,033	12	13	50.3	8	6	47.0
Administration of Justice	0	--	--	--	--	--	--
Antitrust	0	--	--	--	--	--	--
Arson	0	--	--	--	--	--	--
Assault	0	--	--	--	--	--	--
Bribery/Corruption	1	--	--	--	--	--	--
Burglary/Trespass	0	--	--	--	--	--	--
Child Pornography	0	--	--	--	--	--	--
Commercialized Vice	0	--	--	--	--	--	--
Drug Possession	0	--	--	--	--	--	--
Drug Trafficking	372	24	41	63.4	21	36	63.2
Environmental	0	--	--	--	--	--	--
Extortion/Racketeering	0	--	--	--	--	--	--
Firearms	2	--	--	--	--	--	--
Food and Drug	0	--	--	--	--	--	--
Forgery/Counter/Copyright	0	--	--	--	--	--	--
Fraud/Theft/Embezzlement	4	0	20	100.0	0	21	100.0
Immigration	1,648	9	7	47.3	6	6	41.3
Individual Rights	0	--	--	--	--	--	--
Kidnapping	0	--	--	--	--	--	--
Manslaughter	0	--	--	--	--	--	--
Money Laundering	5	44	44	60.2	13	17	50.4
Murder	0	--	--	--	--	--	--
National Defense	0	--	--	--	--	--	--
Obscenity/Other Sex Offenses	0	--	--	--	--	--	--
Prison Offenses	0	--	--	--	--	--	--
Robbery	0	--	--	--	--	--	--
Sexual Abuse	1	--	--	--	--	--	--
Stalking/Harassing	0	--	--	--	--	--	--
Tax	0	--	--	--	--	--	--
Other	0	--	--	--	--	--	--

¹ Of the 30,526 cases, in 2,037 the sentenced individual received a §5K3.1 early disposition program departure below the guideline range. Of these, four cases were excluded due to several logical criteria. Sentences greater than 470 months and probation were included in the sentence average computations as 470 months and zero months, respectively. The information in this table includes conditions of confinement as described in USSG §5C1.1. Descriptions of variables used in this table are provided in Appendix A.

Table 17

**EXTENT OF OTHER DOWNWARD DEPARTURES
BY TYPE OF CRIME¹**

2nd Quarter 2025 Preliminary Cumulative Data (October 1, 2024, through March 31, 2025)

TYPE OF CRIME	N	Mean			Median		
		Sentence In Months	Decrease In Months	Percent Decrease	Sentence In Months	Decrease In Months	Percent Decrease
TOTAL	903	45	31	45.1	24	16	40.4
Administration of Justice	10	4	10	72.0	2	8	93.8
Antitrust	0	--	--	--	--	--	--
Arson	2	--	--	--	--	--	--
Assault	13	63	13	30.9	30	13	27.0
Bribery/Corruption	9	9	29	83.0	0	18	99.6
Burglary/Trespass	0	--	--	--	--	--	--
Child Pornography	18	81	41	38.9	62	34	47.6
Commercialized Vice	0	--	--	--	--	--	--
Drug Possession	0	--	--	--	--	--	--
Drug Trafficking	288	70	49	45.6	60	38	42.3
Environmental	3	8	9	73.3	0	6	100.0
Extortion/Racketeering	0	--	--	--	--	--	--
Firearms	114	34	21	41.0	28	14	33.3
Food and Drug	0	--	--	--	--	--	--
Forgery/Counter/Copyright	6	14	14	66.2	2	11	75.0
Fraud/Theft/Embezzlement	56	26	18	51.9	17	12	44.1
Immigration	264	15	11	42.8	12	9	40.0
Individual Rights	0	--	--	--	--	--	--
Kidnapping	6	149	52	26.7	108	55	34.3
Manslaughter	1	--	--	--	--	--	--
Money Laundering	28	42	48	54.1	24	21	55.1
Murder	13	184	95	36.0	204	73	30.1
National Defense	5	47	32	58.9	13	26	64.8
Obscenity/Other Sex Offenses	4	19	6	25.8	18	6	23.6
Prison Offenses	7	10	8	43.8	6	6	33.3
Robbery	26	71	26	31.5	54	27	27.4
Sexual Abuse	17	114	118	52.2	96	90	50.0
Stalking/Harassing	5	9	15	71.8	0	15	99.9
Tax	8	11	9	52.5	9	8	46.4
Other	0	--	--	--	--	--	--

¹ Of the 30,526 cases, in 924 the sentence was a downward departure from the guideline range, either due to a government motion for a departure (441) or a non-government departure (483). Due to an inability to calculate the extent of departure for cases with a guideline minimum of life, 11 cases were excluded from this table. Also, ten cases were excluded due to several logical criteria. Sentences greater than 470 months and probation were included in the sentence average computations as 470 months and zero months, respectively. The information in this table includes conditions of confinement as described in USSG §5C1.1. Descriptions of variables used in this table are provided in Appendix A.

SOURCE: U.S. Sentencing Commission, Preliminary 2025 Datafile, USSCFY25 (October 1, 2024, through March 31, 2025).

Table 18

**EXTENT OF DOWNWARD VARIANCES
BY TYPE OF CRIME¹**

2nd Quarter 2025 Preliminary Cumulative Data (October 1, 2024, through March 31, 2025)

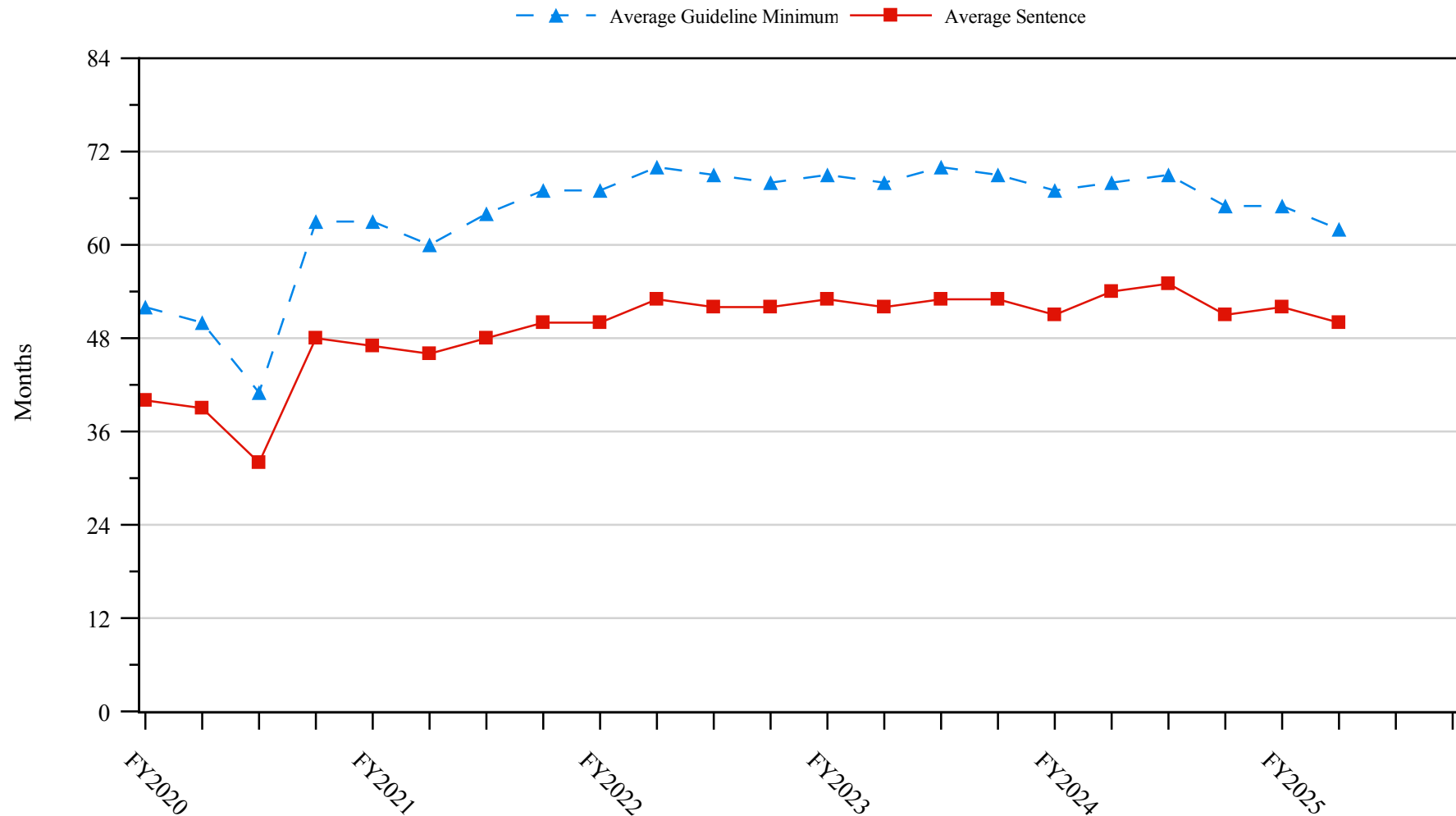
TYPE OF CRIME	N	Mean			Median		
		Sentence In Months	Decrease In Months	Percent Decrease	Sentence In Months	Decrease In Months	Percent Decrease
TOTAL	8,447	56	30	42.8	36	17	33.3
Administration of Justice	95	8	10	65.1	2	8	75.3
Antitrust	0	--	--	--	--	--	--
Arson	9	41	30	56.0	24	26	41.5
Assault	158	46	20	42.2	26	14	33.3
Bribery/Corruption	84	20	20	60.7	9	12	55.6
Burglary/Trespass	4	12	9	61.8	12	9	63.5
Child Pornography	369	84	46	37.1	75	37	33.3
Commercialized Vice	14	5	10	80.9	0	10	98.9
Drug Possession	4	0	2	98.0	0	1	100.0
Drug Trafficking	3,289	79	42	39.0	66	30	31.4
Environmental	21	5	9	76.5	0	8	99.5
Extortion/Racketeering	13	35	11	32.8	30	9	27.5
Firearms	1,355	37	19	42.8	27	12	32.1
Food and Drug	5	22	12	53.7	12	15	63.6
Forgery/Counter/Copyright	14	7	15	75.4	1	12	93.2
Fraud/Theft/Embezzlement	938	21	18	56.5	12	12	50.0
Immigration	927	14	8	39.7	12	6	31.0
Individual Rights	17	27	14	57.2	10	12	52.4
Kidnapping	18	135	56	33.6	114	49	29.6
Manslaughter	7	32	27	61.4	12	24	59.9
Money Laundering	252	49	33	49.5	25	16	40.7
Murder	29	194	73	30.5	216	60	19.1
National Defense	57	24	22	50.6	20	16	45.0
Obscenity/Other Sex Offenses	65	12	9	46.9	12	9	33.3
Prison Offenses	55	11	10	49.3	8	7	50.0
Robbery	247	88	26	27.1	72	20	21.5
Sexual Abuse	213	175	70	29.2	180	57	25.9
Stalking/Harassing	59	13	15	60.3	9	12	53.8
Tax	118	11	12	60.9	8	10	58.0
Other	11	10	18	71.2	0	6	88.5

¹ Of the 30,526 cases, in 8,698 the sentence was a variance below the guideline range, either due to a government motion for a variance (3,104) or a non-government variance (5,594). Due to an inability to calculate the extent of departure for cases with a guideline minimum of life, 111 cases were excluded from this table. Also, 140 cases were excluded due to several logical criteria. Sentences greater than 470 months and probation were included in the sentence average computations as 470 months and zero months, respectively. The information in this table includes conditions of confinement as described in USSG §5C1.1. Descriptions of variables used in this table are provided in Appendix A.

SOURCE: U.S. Sentencing Commission, Preliminary 2025 Datafile, USSCFY25 (October 1, 2024, through March 31, 2025).

Figure 5

**SENTENCE LENGTH AND GUIDELINE MINIMUM QUARTERLY DATA
FOR SENTENCED INDIVIDUALS¹
Fiscal Years 2020 - 2024,
2nd Quarter 2025 Preliminary Cumulative Data (October 1, 2024, through March 31, 2025)**

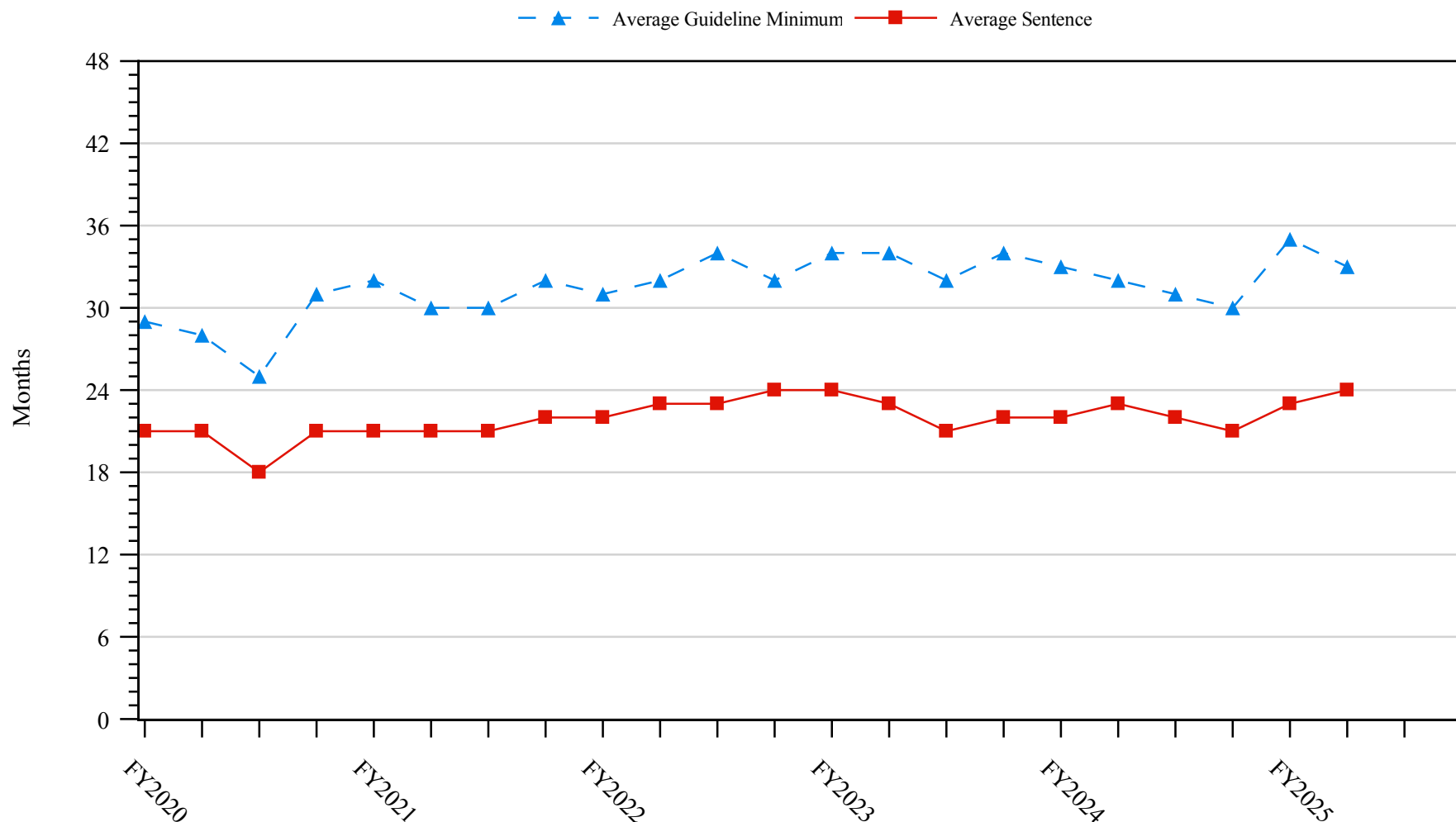


¹ Cases with guideline minimums of life or probation were included in the guideline minimum average computations as 470 months and zero months, respectively. Cases with sentences of 470 months or greater (including life) or probation were included in the sentence average computations as 470 months and zero months, respectively. The information presented in this figure includes conditions of confinement as described in USSG §5C1.1. Guideline minimums account for applicable statutory mandatory penalties. Descriptions of variables used in this figure are provided in Appendix A.

Figure 6

**SENTENCE LENGTH AND GUIDELINE MINIMUM QUARTERLY DATA
FOR INDIVIDUALS SENTENCED UNDER §2B1.1 (THEFT, PROPERTY DESTRUCTION, AND FRAUD)¹**

**Fiscal Years 2020 - 2024,
2nd Quarter 2025 Preliminary Cumulative Data (October 1, 2024, through March 31, 2025)**

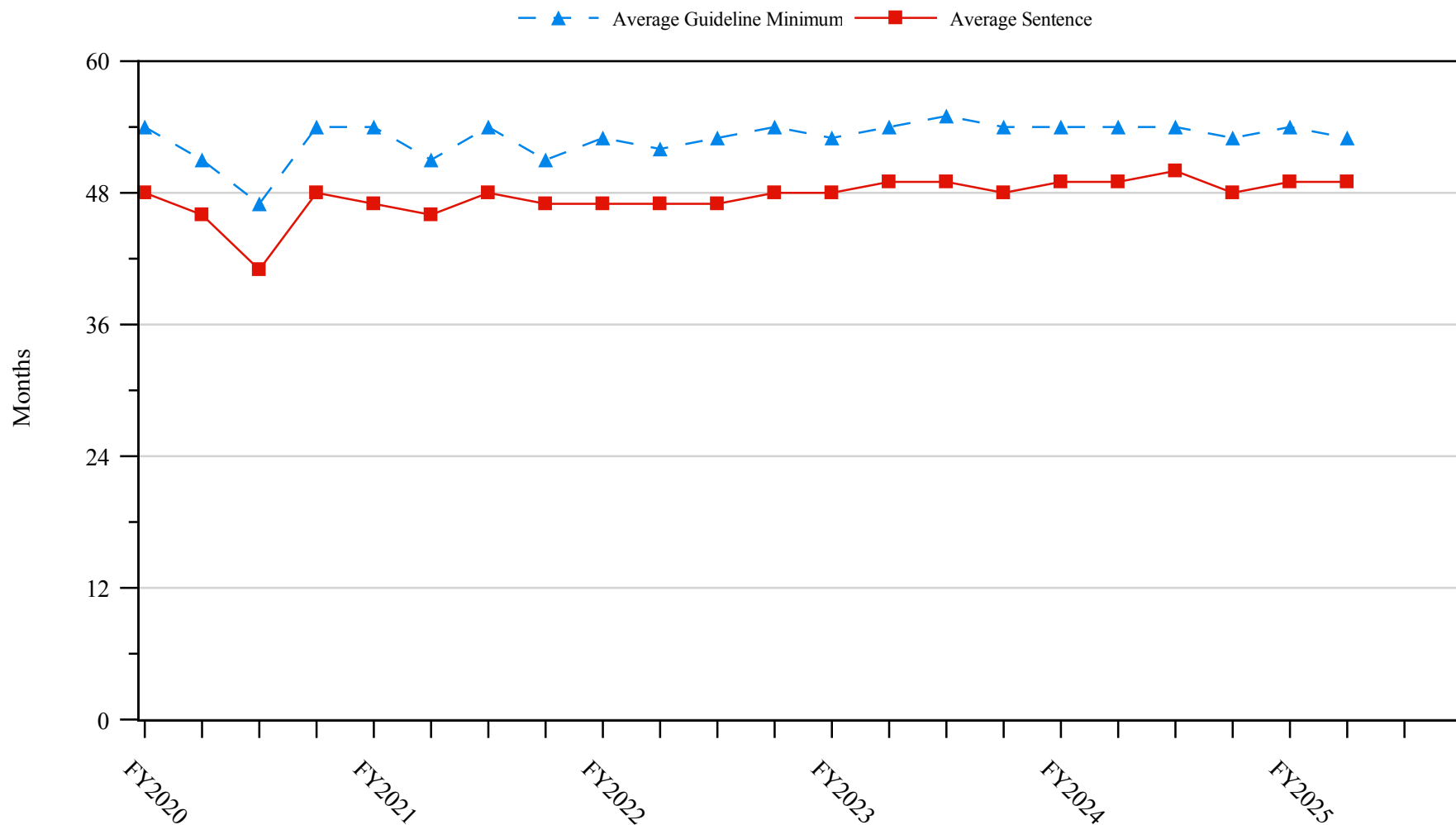


¹ Figure includes only cases with a primary sentencing guideline of USSG §2B1.1 (Larceny, Embezzlement, and Other Forms of Theft; Offenses Involving Stolen Property; Property Damage or Destruction; Fraud and Deceit; Forgery; Offenses Involving Altered or Counterfeit Instruments Other than Counterfeit Bearer Obligations of the United States). Additionally, cases with an amendment year prior to 2001 were excluded from this figure because prior to this time fraud cases were reported separately as USSG §2F1.1. Cases with guideline minimums of life or probation were included in the guideline minimum average computations as 470 months and zero months, respectively. Cases with sentences of 470 months or greater (including life) or probation were included in the sentence average computations as 470 months and zero months, respectively. The information presented in this figure includes conditions of confinement as described in USSG §5C1.1. Guideline minimums account for applicable statutory mandatory penalties. Descriptions of variables used in this figure are provided in Appendix A.

SOURCE: U.S. Sentencing Commission, 2020 - 2024 Datafiles, USSCFY20 - USSCFY24, and Preliminary Data from USSCFY25 (October 1, 2024, through March 31, 2025).

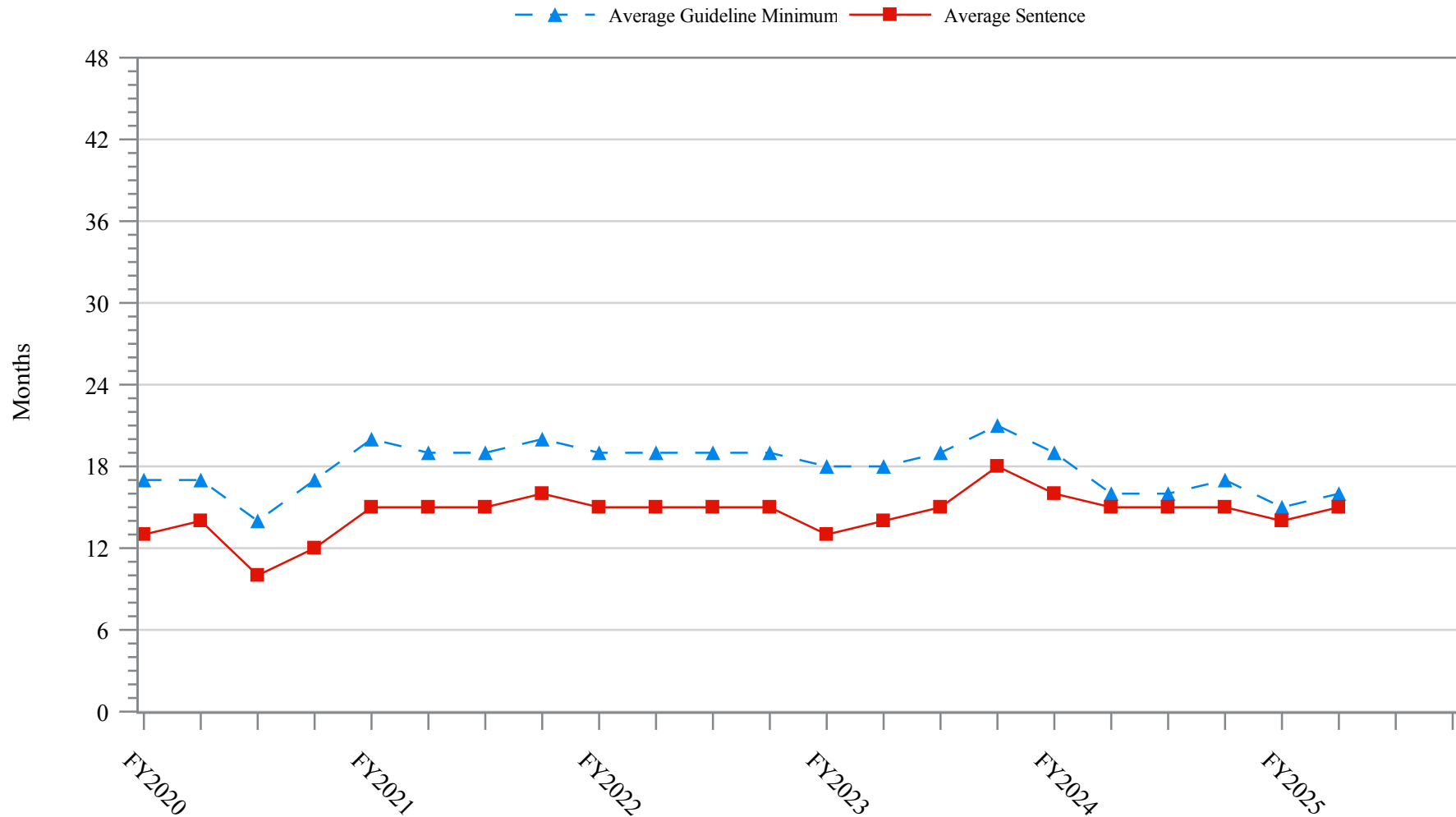
Figure 7

**SENTENCE LENGTH AND GUIDELINE MINIMUM QUARTERLY DATA
FOR INDIVIDUALS SENTENCED UNDER §2K2.1 (UNLAWFUL POSSESSION OF OR TRANSACTION IN FIREARMS)¹**
**Fiscal Years 2020 - 2024,
 2nd Quarter 2025 Preliminary Cumulative Data (October 1, 2024, through March 31, 2025)**



¹ Figure includes only cases with a primary sentencing guideline of USSG §2K2.1 (Unlawful Receipt, Possession, or Transportation of Firearms or Ammunition; Prohibited Transactions Involving Firearms or Ammunition). Cases with guideline minimums of life or probation were included in the guideline minimum average computations as 470 months and zero months, respectively. Cases with sentences of 470 months or greater (including life) or probation were included in the sentence average computations as 470 months and zero months, respectively. The information presented in this figure includes conditions of confinement as described in USSG §5C1.1. Guideline minimums account for applicable statutory mandatory penalties. Descriptions of variables used in this figure are provided in Appendix A.

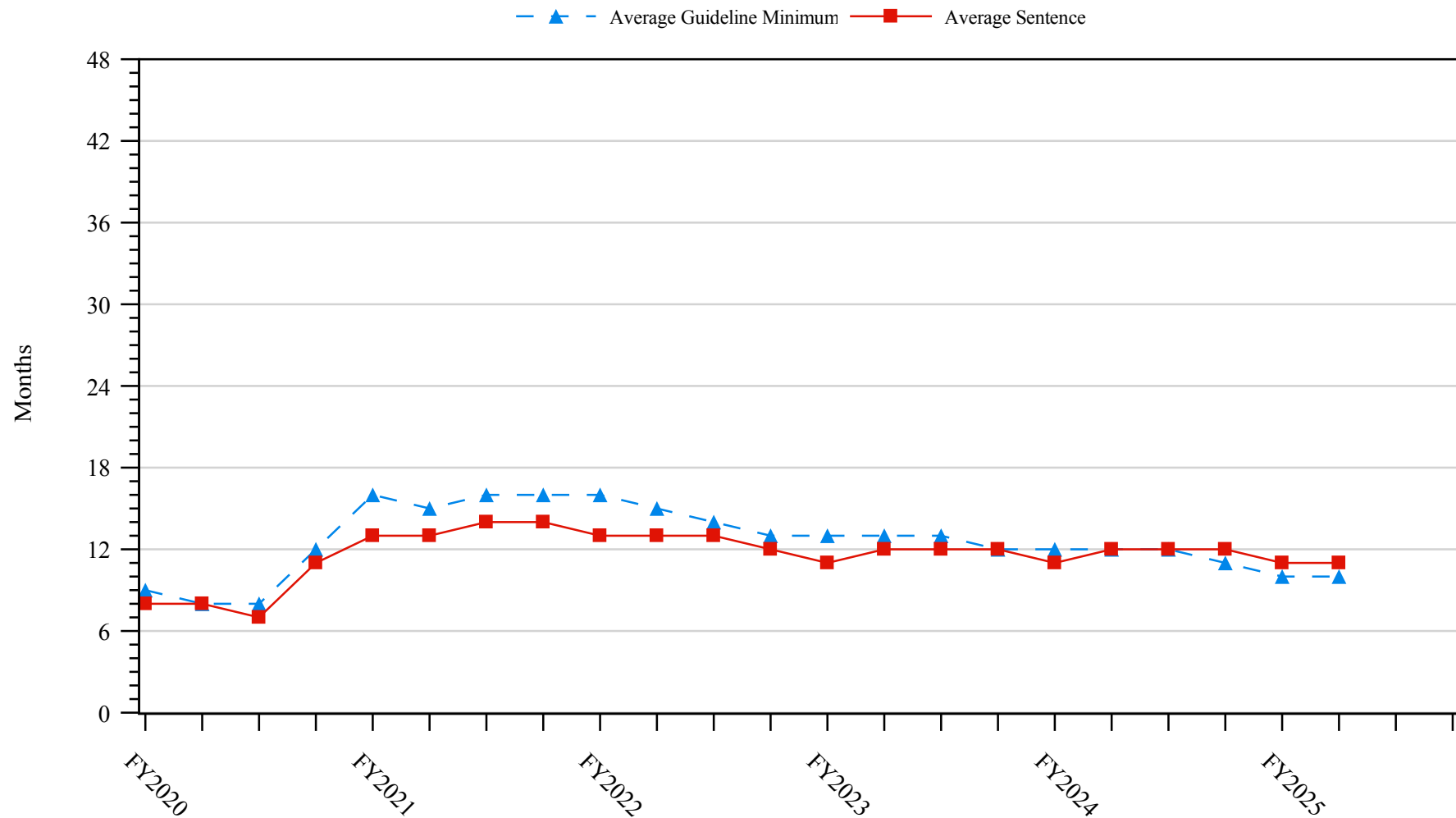
Figure 8
SENTENCE LENGTH AND GUIDELINE MINIMUM QUARTERLY DATA
FOR INDIVIDUALS SENTENCED UNDER §2L1.1 (ALIEN SMUGGLING)¹
Fiscal Years 2020 - 2024,
2nd Quarter 2025 Preliminary Cumulative Data (October 1, 2024, through March 31, 2025)



¹ Figure includes only cases with a primary sentencing guideline of USSG §2L1.1 (Smuggling, Transporting, or Harboring an Unlawful Alien). Cases with guideline minimums of life or probation were included in the guideline minimum average computations as 470 months and zero months, respectively. Cases with sentences of 470 months or greater (including life) or probation were included in the sentence average computations as 470 months and zero months, respectively. The information presented in this figure includes conditions of confinement as described in USSG §5C1.1. Guideline minimums account for applicable statutory mandatory penalties. Descriptions of variables used in this figure are provided in Appendix A.

Figure 9

**SENTENCE LENGTH AND GUIDELINE MINIMUM QUARTERLY DATA
FOR INDIVIDUALS SENTENCED UNDER §2L1.2 (UNLAWFUL ENTERING OR REMAINING IN THE UNITED STATES)¹
Fiscal Years 2020 - 2024,
2nd Quarter 2025 Preliminary Cumulative Data (October 1, 2024, through March 31, 2025)**

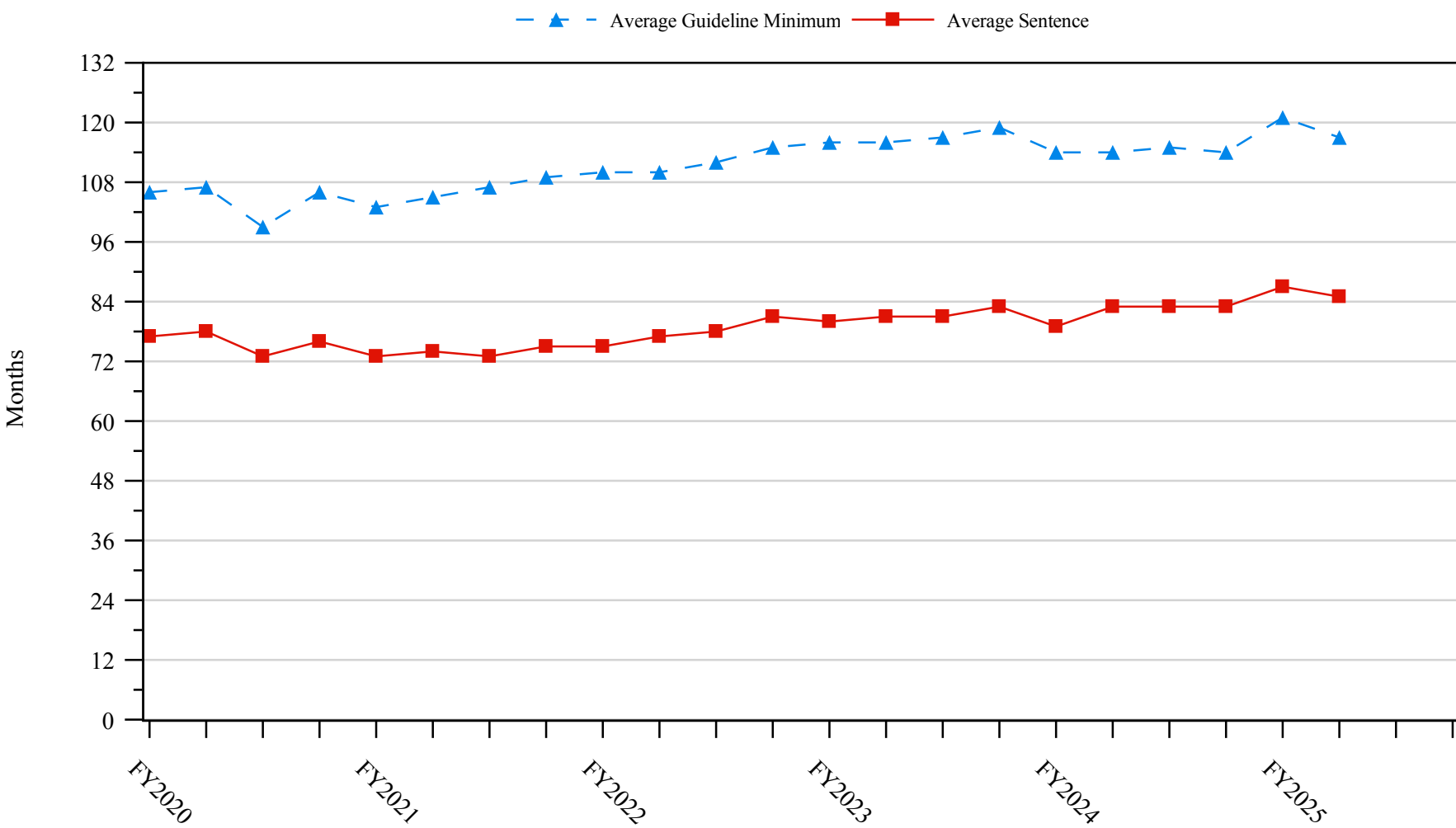


¹ Figure includes only cases with a primary sentencing guideline of USSG §2L1.2 (Unlawful Entering or Remaining in the United States). Cases with guideline minimums of life or probation were included in the guideline minimum average computations as 470 months and zero months, respectively. Cases with sentences of 470 months or greater (including life) or probation were included in the sentence average computations as 470 months and zero months, respectively. The information presented in this figure includes conditions of confinement as described in USSG §5C1.1. Guideline minimums account for applicable statutory mandatory penalties. Descriptions of variables used in this figure are provided in Appendix A.

SOURCE: U.S. Sentencing Commission, 2020 - 2024 Datafiles, USSCFY20 - USSCFY24, and Preliminary Data from USSCFY25 (October 1, 2024, through March 31, 2025).

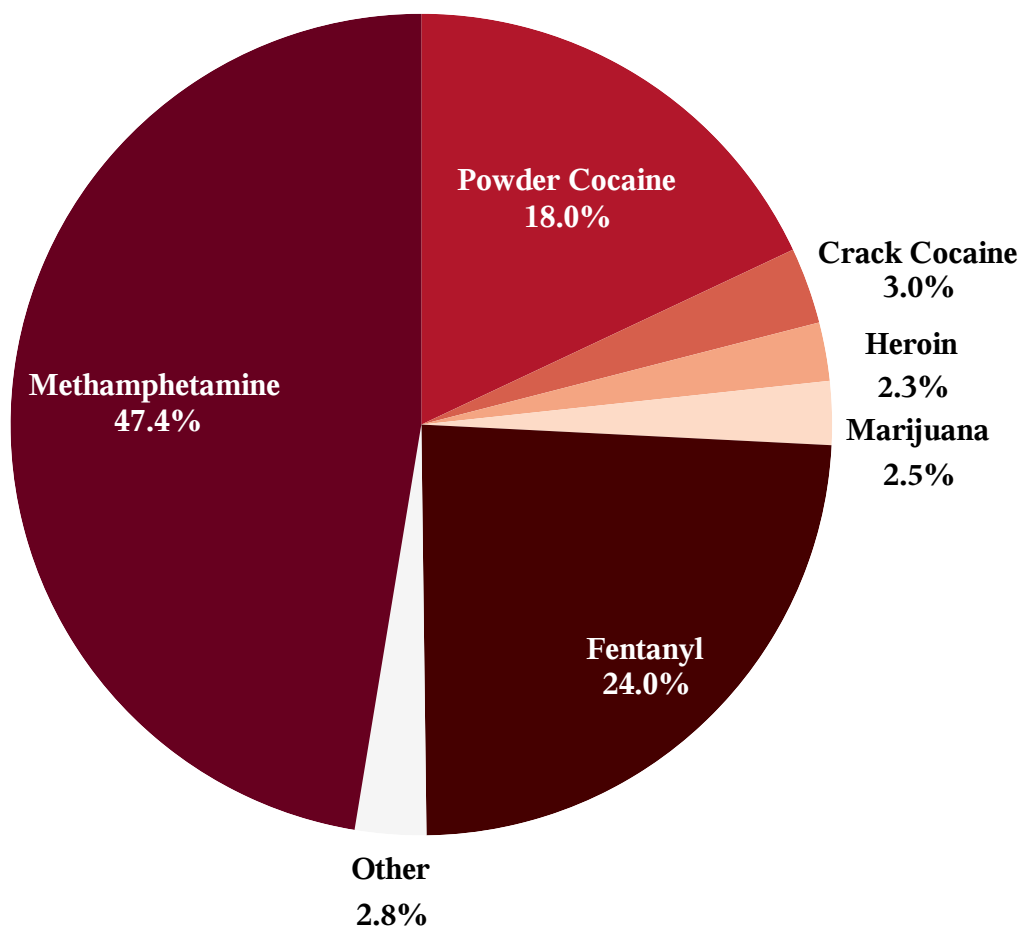
Figure 10

**SENTENCE LENGTH AND GUIDELINE MINIMUM QUARTERLY DATA
FOR INDIVIDUALS SENTENCED UNDER §2D1.1 (UNLAWFUL DRUG TRAFFICKING OR MANUFACTURING)¹
Fiscal Years 2020 - 2024,
2nd Quarter 2025 Preliminary Cumulative Data (October 1, 2024, through March 31, 2025)**



¹ Figure includes only cases with a primary sentencing guideline of USSG §2D1.1 (Unlawful Manufacturing, Importing, Exporting, or Trafficking (Including Possession with Intent to Commit These Offenses); Attempt or Conspiracy). Cases with guideline minimums of life or probation were included in the guideline minimum average computations as 470 months and zero months, respectively. Cases with sentences of 470 months or greater (including life) or probation were included in the sentence average computations as 470 months and zero months, respectively. The information presented in this figure includes conditions of confinement as described in USSG §5C1.1. Guideline minimums account for applicable statutory mandatory penalties. Descriptions of variables used in this figure are provided in Appendix A.

Figure 11
DISTRIBUTION OF PRIMARY DRUG TYPE
IN FEDERAL DRUG CASES^{1,2}
2nd Quarter 2025 Preliminary Cumulative Data
(October 1, 2024, through March 31, 2025)



¹ Of the 30,526 cases, in 8,066 the individual was sentenced under USSG Chapter Two, Part D (Drugs). The 'Fentanyl' category includes both Fentanyl (N-phenyl-N-[1-(2-phenylethyl)-4-piperidinyl] Propanamide) and Fentanyl Analogue. Descriptions of variables used in this figure are provided in Appendix A.

² The 'Other' drug category includes the remaining primary drug types of which the following have more than 50 cases: Oxycodone/Oxycontin (102).

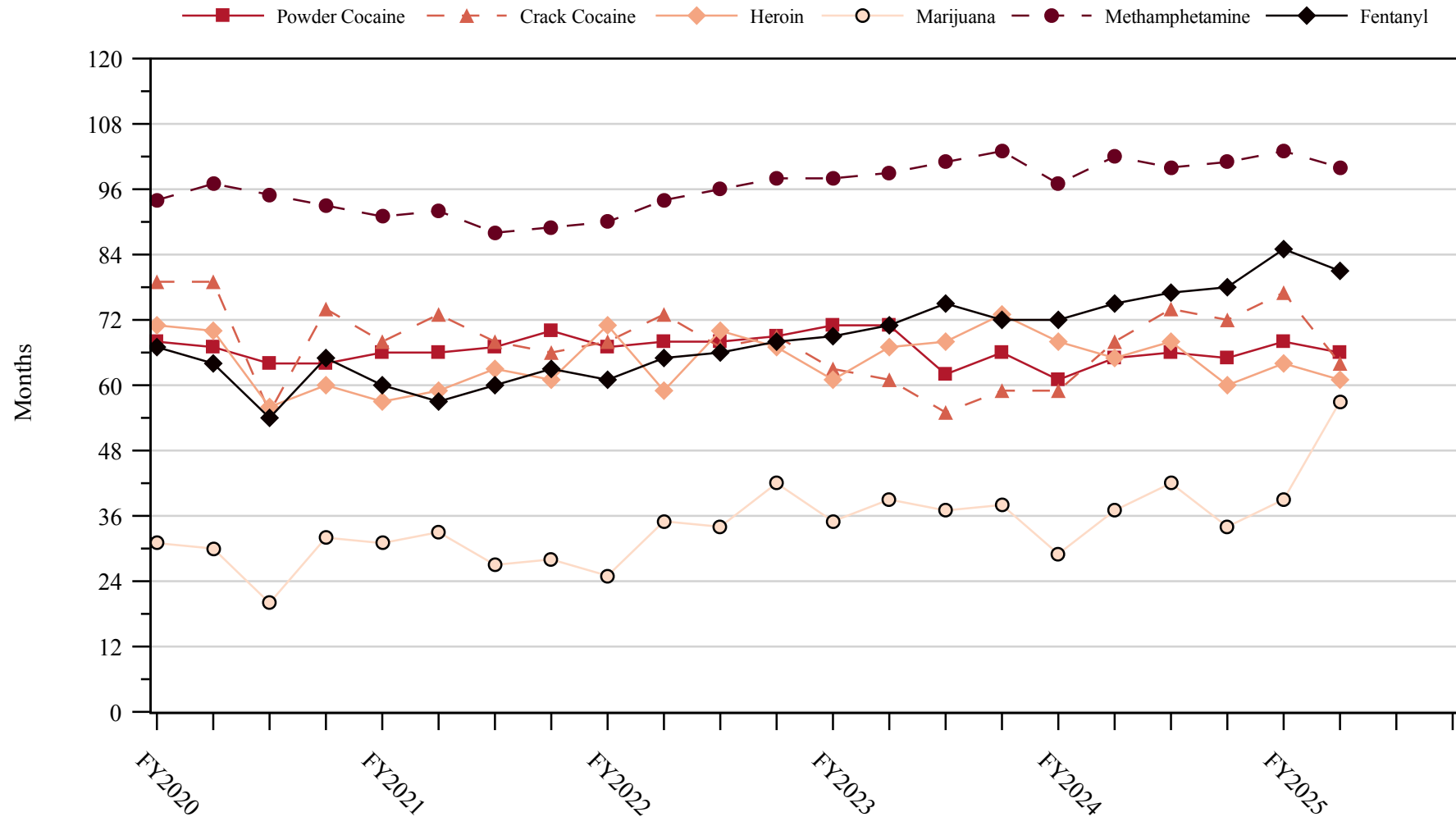
SOURCE: U.S. Sentencing Commission, Preliminary 2025 Datafile, USSCFY25 (October 1, 2024, through March 31, 2025).

Figure 12

SENTENCE LENGTH IN DRUG TRAFFICKING CASES

BY MAJOR DRUG TYPE QUARTERLY DATA¹

Fiscal Years 2020 - 2024,
2nd Quarter 2025 Preliminary Cumulative Data (October 1, 2024, through March 31, 2025)



¹ Only individuals sentenced under §§2D1.1 (Drug Trafficking), 2D1.2 (Protected Locations), 2D1.5 (Continuing Criminal Enterprise), 2D1.6 (Use of a Communication Facility), 2D1.8 (Rent/Manage Drug Establishment), 2D1.10 (Endangering Human Life While Manufacturing), or 2D1.14 (Narco-Terrorism) are depicted in this figure. Sentences of 470 months or greater (including life) and probation were included in the sentence average computations as 470 months and zero months, respectively. The information in this figure includes conditions of confinement as described in USSG §5C1.1. Cases missing drug type or sentencing information were also excluded. Descriptions of variables used in this figure are provided in Appendix A.

SOURCE: U.S. Sentencing Commission, 2020 - 2024 Datafiles, USSCFY20 - USSCFY24, and Preliminary Data from USSCFY25 (October 1, 2024, through March 31, 2025).

Appendix A

Descriptions of Datafiles and Variables

Introduction

The Commission collects and analyzes data on federal sentences to support its various activities. As authorized by Congress, the Commission's numerous research responsibilities include (1) the establishment of a research and development program to serve as a clearinghouse and information center for the collection, preparation, and dissemination of information on federal sentencing practices; (2) the publication of data concerning the sentencing process; (3) the systematic collection and dissemination of information concerning sentences actually imposed and the relationship of such sentences to the factors set forth in section 3553(a) of title 18, United States Code; and (4) the systematic collection and dissemination of information regarding the effectiveness of sentences imposed.¹

The Commission maintains a comprehensive, computerized data collection system which forms the basis for its clearinghouse of federal sentencing information and which contributes to the agency's research mission.

Pursuant to 28 U.S.C. § 994(w), the chief judge of each district is required to ensure that within 30 days of entry of judgment in a criminal case, the sentencing court submits a report of sentence to the Commission that includes (1) the judgment and commitment order; (2) the written statement of reasons; (3) any plea agreement; (4) the indictment or other charging document; (5) the presentence report; and (6) any other information the Commission requests. Information on minor and petty offenses are not reported to the Commission as the sentencing guidelines do not apply in those cases.² Cases in which a sentence of death was imposed also are not available in this dataset for this same reason.³

Standard information on each case is extracted from sentencing documents received and computerized for analysis. Note that for all tables, total percentages may not add up to exactly 100 percent due to rounding.

Variables

The following section describes the variables used in this report.

Attribution Category for Sentences Outside the Range

All categories replicate the list of checkboxes available on the Statement of Reasons form. Not all checkbox categories are available in both the departure section and sentences outside the guideline system section on this form and multiple checkboxes may be indicated in a single case so that totals in a table may exceed the total number of cases. The Commission uses these checkboxes in determining government sponsorship: all cases in which one of the pursuant to a plea agreement boxes is indicated are attributed to the government. Additionally, other types of Statement of Reasons forms may indicate sponsorship in writing, and these attributions are also included in the appropriate category.

¹ 28 U.S.C. §§ 995(a)(12) and (14) – (16).

² See U.S. SENTENCING COMM'N, *Guidelines Manual*, §1B1.9 (Nov. 2023).

³ See 18 U.S.C. §§ 3591-99 for the sentencing procedures that apply in death penalty cases.

Circuit

Information on judicial *Circuit* is generated using the location of the judicial district in which the person was sentenced.

Citizenship Status

Information on the *Citizenship Status* of sentenced individuals is obtained from the Presentence Report. Persons are categorized as one of the following: “U.S. citizen,” “resident alien,” “illegal alien,” “extradited alien,” or “non-U.S. citizen, alien status unknown.” The latter four categories are collapsed into the category of “non-U.S. citizen.”

District

Information on the judicial *District* in which sentencing occurred is obtained from the Judgment and Commitment Order.

Downward Departure

Downward Departure consists of cases in which the sentence imposed was below the applicable guideline range and for which the court cited a reason on Part V of the Statement of Reasons form (Departures Pursuant to the Guidelines Manual). In these cases, the court may also have cited 18 U.S.C. § 3553 or factors or reasons specifically prohibited in the provisions, policy statements, or commentary of the sentencing guidelines as additional reasons. This category includes departures that result from government motions as well as from motions by the parties.

Downward Variance

Downward Variance consists of cases in which the sentence imposed was below the applicable guideline range and for which the court cited a reason on Part VI of the Statement of Reasons form (Court Determination for a Variance). This category includes variances which result from government motions as well as from motions by the defendant.

Extent of Decrease

Extent of Decrease is calculated based on the difference between the sentence length (including any months of alternative confinement as defined in USSG §5C1.1) and the guideline minimum (including any statutory trumps) for below range cases. Life imprisonment sentences and cases where the guideline minimum is zero months or life are excluded from all extent of decrease calculations due to the logical difficulty in calculating a decrease from these values. High values of the sentence are capped at 470 months for analytical purposes.

Extent of Increase

Extent of Increase is calculated based on the difference between the guideline maximum (including any statutory trumps) and the sentence length (including any months of alternative confinement as defined in USSG §5C1.1) for above range cases. Life sentences and cases where the guideline minimum is life are excluded from all extent of increase calculations due to the logical difficulty in calculating an increase from these values. High values of the sentence are capped at 470 months for analytical purposes.

Gender

Gender is obtained from the Presentence Report.

Government Motion (Variance)

Government Motion (Variance) consists of cases in which the sentence imposed was below the applicable guideline range pursuant to a government motion and for which the court cited a reason on Part VI of the Statement of Reasons (SOR) form (Court Determination for a Variance). These cases are determined by a yearly case review by Commission staff of both the reasons for the below range sentence and the coding by Commission staff of any indication of government sponsorship as indicated on the Statement of Reasons for below range cases. The SOR form has specific checkboxes to indicate the origins of the variance, but cases that do not use this form may also indicate in writing the origins of the variance. Additionally, all cases with one or more of the following reasons were classified as being sponsored by the government regardless of whether the SOR indicated sponsorship: pursuant to a plea agreement

(binding, non-binding, or unknown), fast track, savings to the government, early plea, waiver of indictment and/or appeal, other government motion, global disposition, due to stipulations, facilitated early release of a material witness, joint recommendation, and a large number of immigration cases. This category does not include cases with USSG §5K1.1 Substantial Assistance departures or USSG §5K3.1 Early Disposition Program (EDP) departures.

Guideline Sentencing Range

The *Guideline Sentencing Range* is taken from the Statement of Reasons provided by the sentencing court. Alternatively, if the Statement of Reasons is missing, then the information is taken from the Presentence Report.

For tables in this report, unless otherwise indicated, the guideline sentencing range does not take into account applicable statutory restrictions on either the maximum or the minimum of the range; therefore, it may differ from the available range, which does take into account the statutory restrictions.

Non-Government Departure

Non-Government Departure consists of cases in which the sentence imposed was outside the applicable guideline range and for which the court cited a reason on Part V of the Statement of Reasons form (Departures Pursuant to the Guidelines Manual) other than USSG §5K1.1 or USSG §5K3.1, and where the government did not initiate, propose, or stipulate to the sentence.

Non-Government Variance

Non-Government Variance consists of cases in which the sentence imposed was outside the applicable guideline range and for which the court cited a reason on Part VI of the Statement of Reasons form (Court Determination for a Variance), and where the government did not initiate, propose, or stipulate to the sentence.

Other Government Motion (Downward Departure)

Other Government Motion is determined by a yearly case review by Commission staff of both the reasons for the below range sentence and the coding by Commission staff of any indication of government sponsorship as indicated on the Statement of Reasons for below range cases. The SOR form has specific checkboxes to indicate the origins of the departure, but cases that do not use this form may also indicate in writing the origins of the departure. Additionally, all cases with one or more of the following reasons were classified as being sponsored by the government regardless of whether the SOR indicated sponsorship: pursuant to a plea agreement (binding, non-binding, or unknown), fast track, savings to the government, early plea, waiver of indictment and/or appeal, other government motion, global disposition, due to stipulations, facilitated early release of a material witness, joint recommendation, and a large number of immigration cases. This category does not include cases with USSG §5K1.1 Substantial Assistance departures or USSG §5K3.1 Early Disposition Program (EDP) departures.

Primary Drug Type

Information on *Primary Drug Type* is obtained from the Presentence Report, Judgment and Commitment Order, or Plea Agreement. It is recorded only if at least one of the statutes of conviction recorded by the Commission is an offense under title 21 of the United States Code or an offense under another title when the underlying conduct involves a controlled substance. Information about type of drug in the text and tables is derived from the primary drug type (i.e., the type that produces the highest base offense level).

The category *Fentanyl* includes cases in which the drug involved is Fentanyl (N-phenyl-N-[1-(2-phenylethyl)-4-piperidinyl] Propanamide) and cases in which the court determined the substance involved to be a Fentanyl analogue, as defined in the *Guidelines Manual*. The category *Marijuana* includes Hashish and Hashish oil. The category *Methamphetamine* includes pure (actual) methamphetamine, “Ice,” methamphetamine mixture, and methamphetamine precursors sentenced under any drug trafficking guideline other than USSG §2D1.11 (for example ephedrine and pseudoephedrine). All drug types not listed separately in this report are collapsed into the “Other” drug category.

Primary Guideline

When more than one sentencing guideline is applied in a case, the *Primary Guideline* is the guideline that has the highest adjusted offense level (this includes the Base Offense Level, all applicable Specific Offense Characteristics, and Chapter Three Adjustments prior to the application of Multiple Count Units).

Race

Information on *Race* is obtained from the Presentence Report in separate categories of race and ethnicity (*White, Black, Native American or Alaskan Native, Asian or Pacific Islander, Multiracial*, and “*Other*”). Ethnicity data indicates whether a sentenced individual is of Hispanic origin. For purposes of this report, individuals whose ethnic background is designated as Hispanic are represented as Hispanic in all tables regardless of racial background. The *Other* race category includes individuals of Native American or Alaskan Native, Asian or Pacific Islander, Multiracial, and “Other” origin.

Sentence Imposed or Sentence Length

Sentence Imposed or *Sentence Length* reports the mean and median terms of the sentence imposed in months. It also includes any time served amounts and imprisonment under USSG §5G1.3. This information is obtained from the Judgment and Commitment Order. Mean and median sentence lengths are rounded to the nearest month. Probation sentences are included as zero months. Any portion of a sentence that is an alternative confinement as described in USSG §5C1.1 is included.

Cases in which a sentence is imposed, but where the length is indeterminable, are excluded. When sentences are expressed as “time served” on the Judgment and Commitment Order, Commission staff uses the dates in federal custody to determine the length of time served when an individual has been in custody the entire time. If the individual has been in and out of custody, or the start date is unclear/missing, then the Commission assigns a value of one day as a minimal time served amount for these cases. In cases where the court imposes a sentence of life imprisonment, a numeric value is necessary to include these cases in any sentence length analysis. Accordingly, life sentences are reported as 470 months, a length consistent with the average life expectancy of individuals sentenced for federal offenses given the average age of those person. Sentences of greater than 470 months are also reported as 470 months. The footnote in the relevant tables and figures indicates when this occurs.

Sentenced Individuals

Each *Sentenced Individual* or case, as recorded by the Commission, involves a single sentencing event for a single person. Multiple counts of conviction, including counts of conviction charged on multiple indictments, are considered a single sentencing event if a single sentence was imposed for the counts on the same day at the same time by the same judge. An individual may account for more than one case if the person was involved in more than one sentencing event during the fiscal year. Data on co-defendants in the same sentencing will appear as separate cases.

Sentence Type

Using sentencing information obtained from the Judgment and Commitment Order, the *Total Receiving Imprisonment* category includes the number of individuals sentenced (and percent of *Total Cases*) who received a commitment to the Bureau of Prisons. This category is the sum of cases in *Prison Only* and the *Prison and Alternatives* categories.

The *Total Receiving Probation* category includes the number of individuals sentenced (and the percent of *Total Cases*) who received a term of probation with or without a condition of community confinement, intermittent confinement, or home detention. This category is the sum of *Probation Only* and *Probation and Alternatives* categories.

The *Prison Only* category includes individuals sentenced to a term of imprisonment only, with no additional conditions of community confinement, home detention or intermittent confinement.

The *Prison and Alternatives* category includes all cases in which individuals received prison and conditions of alternative confinement as defined in USSG §5C1.1. This category includes, but is not

limited to, Zone A, Zone B, or Zone C cases receiving prison with additional conditions of a term of community confinement, home detention, or intermittent confinement.

The *Probation Only* category includes the number of individuals who received a term of probation without a condition of community confinement, intermittent confinement, or home detention.

The *Probation and Alternatives* category includes the number of individuals who received a term of probation with a condition of community confinement, intermittent confinement, or home detention.

The *Fine Only* category includes the number of individuals who received no prison, no probation, and no time of alternative confinement as defined in USSG §5C1.1. Most of these sentenced individuals received a fine and/or a special assessment.

Sentences Under the Guidelines Manual

This category includes individuals whose sentences are determined to be either within the guideline range or outside the guideline range and for which the court cited a reason on Part V of the Statement of Reasons form (Departures Pursuant to the Guidelines Manual). In these cases, the court may also have cited 18 U.S.C. § 3553 or factors or reasons specifically prohibited in the provisions, policy statements, or commentary of the sentencing guidelines as additional reasons. This category includes departures which result from government motions as well as from motions by the sentenced individual.

Type of Crime

Information on *Type of Crime* is obtained from the primary guideline detailed in the Presentence Report. If the primary guideline is an “attempt/conspiracy” guideline such as USSG §2X1.1, then the underlying guideline is used to determine the type of crime category. If there is no primary guideline provided, then information about the type of crime category is obtained from the statutes of conviction listed on the Judgment and Commitment Order. When the “type of crime” for the case is determined from the statutes of conviction, the offense applicable to the count of conviction with the highest statutory maximum becomes the “type of crime.” If two or more counts are found to have the same statutory maximum, the “type of crime” is selected according to which count of conviction has the highest statutory minimum. Finally, in the event of a small number of cases still tied, the “type of crime” that best represented the nature of the criminal behavior is chosen. For convenience in analysis, a summary variable describing “type of crime” is derived. This is generated by grouping similar primary offenses into a smaller set of categories. Note that the crime categories differ between the individual and organizational datafiles. Listed below are the type of crimes that are grouped into each of the crime categories used in the individual datafile tables for this report:

Administration of Justice includes obstructing or impeding officers, contempt, obstruction of justice, perjury or subornation of perjury, bribery of a witness, impersonation, failure to appear by defendant, failure to appear by material witness, commission of offense while on release, payment of witness, and misprision of a felony. This category includes persons sentenced under §§2A2.4, 2J1.1, 2J1.2, 2J1.3, 2J1.4, 2J1.6, 2J1.9, and 2X4.1 of the *Guidelines Manual*.

Antitrust includes bid-rigging, price-fixing, and market allocation agreement. This category includes individuals sentenced under §2R1.1 of the *Guidelines Manual*.

Arson includes property damage by explosives and use of fire or explosives to commit a federal felony. This category includes persons sentenced under §§2K1.4 and 2K1.7 (deleted) of the *Guidelines Manual*.

Assault includes attempt to commit murder, assault with intent to murder, threatening communication, aggravated assault, minor assault, and conspiracy that includes assault with attempt to murder. This category includes persons sentenced under §§2A2.1, 2A2.2, and 2A2.3 of the *Guidelines Manual*.

Bribery/Corruption includes offenses involving public officials and violations of federal election campaign laws, bribe involving officials, bribery — bank loan/commercial, loan or gratuity to bank examiner, *etc.*, gratuity involving officials, bribe or gratuity affecting employee plan, conflict of interest, payment or receipt of unauthorized compensation, and making, receiving, or failing to report a contribution, donation, or expenditure in violation of the Federal Election Campaign Act. This category includes persons sentenced under §§2B4.1, 2C1.1, 2C1.2, 2C1.3, 2C1.4 (deleted), 2C1.5, 2C1.6 (deleted), 2C1.7 (deleted), and 2C1.8 of the *Guidelines Manual*.

Burglary/Trespass includes burglary of a residence and burglary of a structure other than a residence, post office burglary, burglary of DEA premises (pharmacy), bank burglary, and trespass. This category includes persons sentenced under §§2B2.1, 2B2.2 (deleted), and 2B2.3 of the *Guidelines Manual*.

Child Pornography includes the receipt or possession of materials involving the sexual exploitation of minors. This category includes persons sentenced under §§2G2.2 and 2G2.4 (deleted) of the *Guidelines Manual*.

Commercialized Vice includes gambling, animal fighting, and prostitution offenses. This category includes persons sentenced under §2G1.1 where the court did NOT apply a Base Offense Level of 34, and all individuals sentenced under §§2E3.1, 2E3.2 (deleted), and 2E3.3 (deleted) of the *Guidelines Manual*.

Drug Possession includes simple possession of all drug types. This category includes persons sentenced under §2D2.1 of the *Guidelines Manual*.

Drug Trafficking includes drug distribution/manufacture — conspiracy, continuing criminal enterprise, drug distribution — employee under 21, drug distribution near school, drug import/export, drug distribution to person under 21, establish/rent drug operation, endangering human life while manufacturing, and narco-terrorism. This category includes persons sentenced under §§2D1.1, 2D1.2, 2D1.5, 2D1.6, 2D1.8, 2D1.10, and 2D1.14 of the *Guidelines Manual*.

Environmental includes waste discharge; specially protected fish, wildlife, and plants; recordkeeping; tampering; and falsification; tampering with a public water system; mishandling of environmental pollutants; and hazardous devices on federal lands. This category includes persons sentenced under §§2K3.1 (deleted), 2Q1.1, 2Q1.2, 2Q1.3, 2Q1.4, 2Q1.5 (deleted), 2Q1.6, 2Q2.1, and 2Q2.2 (deleted) of the *Guidelines Manual*.

Extortion/Racketeering includes extortion by force, or threat of injury or serious damage, extortionate extension of credit, blackmail, Hobbs Act extortion, travel in aid of racketeering, crime relating to racketeering, and violent crimes in aid of racketeering, unlawful conduct relating to contraband cigarettes, and labor racketeering. This category includes persons sentenced under §§2B3.2, 2B3.3, 2E1.1, 2E1.2, 2E1.3, 2E1.4, 2E1.5 (deleted), 2E2.1, 2E4.1, 2E5.1, 2E5.2 (deleted), 2E5.3, 2E5.4 (deleted), 2E5.5 (deleted), and 2E5.6 (deleted) of the *Guidelines Manual*.

Firearms includes unlawful receipt/possession/transportation of firearms, ammunition, or explosive material; prohibited transactions involving firearms or ammunition; possession of guns/explosives on aircraft; unlawful trafficking, *etc.*, in explosives; possession of guns/explosives in federal facility/schools; use of fire or explosives to commit felony; use of firearms or ammunition during crime; improper storage of explosive materials; and failure to report theft of explosive materials. This category includes persons sentenced under §§2K1.1, 2K1.2, 2K1.3, 2K1.5, 2K1.6, 2K2.1, 2K2.2, 2K2.3, 2K2.4, 2K2.5, 2K2.6, and 2K3.2 of the *Guidelines Manual*.

Food and Drug includes tampering with risk of death or injury, providing false information or tampering with products, tampering to injure business, odometer laws and regulations, and violation of regulations involving food, drugs, etc. This category includes persons sentenced under §§2N1.1, 2N1.2, 2N1.3, 2N2.1, and 2N3.1 of the *Guidelines Manual*.

Forgery/Counterfeiting/Copyright includes counterfeit bearer obligations and forgery/counterfeit (non-bearer obligations) as well as criminal infringement of copyright or trademark. This category includes persons sentenced under §§2B5.1, 2B5.2 (deleted), 2B5.3, and 2B5.4 (deleted) of the *Guidelines Manual*.

Fraud/Theft/Embezzlement includes fraud and deceit, embezzlement — property, embezzlement from labor unions, embezzlement — mail/post office, embezzlement from benefit plans, bank embezzlement, bank larceny, theft from benefit plans, other theft — mail/post office, receipt/possession of stolen property, theft from labor union, theft or damage to cultural heritage resources, insider trading, and aggravated identity theft. This category includes persons sentenced under §§2B1.1, 2B1.2 (deleted), 2B1.3 (deleted), 2B1.4, 2B1.5, 2B1.6, 2F1.1 (deleted), and 2F1.2 (deleted) of the *Guidelines Manual*.

Immigration includes trafficking in U.S. passports, trafficking in entry documents, failure to surrender naturalization certificate, fraudulently acquiring U.S. passports, smuggling, transporting, or harboring an unlawful alien, fraudulently acquiring entry documents, and unlawfully entering or remaining in the U.S. This category includes persons sentenced under §§2L1.1, 2L1.2, 2L1.3 (deleted), 2L2.1, 2L2.2, 2L2.3 (deleted), 2L2.4 (deleted), and 2L2.5 of the *Guidelines Manual*.

Individual Rights includes interference with rights under color of law; force or threats to deny benefits or rights; obstructing an election or registration; manufacture, etc. — eavesdropping device; other deprivations/discrimination; obstructing correspondence; peonage, servitude, and slave trade; intercept communication or eavesdropping; and conspiracy to deprive individual of civil rights. This category includes persons sentenced under §§2H1.1, 2H1.2 (deleted), 2H1.3 (deleted), 2H1.4 (deleted), 2H1.5 (deleted), 2H2.1, 2H3.1, 2H3.2, 2H3.3, 2H4.1, and 2H4.2 of the *Guidelines Manual*.

Kidnapping includes hostage and ransom taking, abduction, unlawful restraint, and aircraft piracy. This category includes persons sentenced under §§2A4.1, 2A4.2, and 2A5.1 of the *Guidelines Manual*.

Manslaughter includes both involuntary and voluntary manslaughter. This category includes persons sentenced under §§2A1.3 and 2A1.4 of the *Guidelines Manual*.

Money Laundering includes laundering of monetary instruments, monetary transaction from unlawful activity, failure to file currency report, and failure to report monetary transactions. This category includes persons sentenced under §§2S1.1, 2S1.2 (deleted), 2S1.3, and 2S1.4 (deleted) of the *Guidelines Manual*.

Murder includes first degree murder, second degree murder, and conspiracy or solicitation to commit murder. This category includes persons sentenced under §§2A1.1, 2A1.2, and 2A1.5 of the *Guidelines Manual*.

National Defense includes treason, sabotage, espionage, evasion of military service, prohibited financial transactions and exports, providing material support to designated foreign terrorist organizations, nuclear, biological, and chemical weapons, and weapons of mass destruction. This category includes persons sentenced under §§2M1.1, 2M2.1, 2M2.2 (deleted), 2M2.3, 2M2.4 (deleted), 2M3.1, 2M3.2, 2M3.3, 2M3.4, 2M3.5, 2M3.6

(deleted), 2M3.7 (deleted), 2M3.8 (deleted), 2M3.9, 2M4.1, 2M5.1, 2M5.2, 2M5.3, 2M6.1, and 2M6.2 of the *Guidelines Manual*.

Obscenity/Other Sex Offenses includes failure to register as a sex offender, recordkeeping offenses involving production of sexually explicit material, and importing, mailing, transporting, or broadcasting obscene material. This category includes persons sentenced under §§2A3.5, 2A3.6, 2G2.5, 2G3.1, and 2G3.2 of the *Guidelines Manual*.

Prison Offenses includes contraband in prisons, riots in federal facilities, and escape. This category includes persons sentenced under §§2P1.1, 2P1.2, 2P1.3, and 2P1.4 (deleted) of the *Guidelines Manual*.

Robbery includes bank robbery, Hobbs Act robbery, post office robbery, other robbery, and carjacking. This category includes persons sentenced under §2B3.1 of the *Guidelines Manual*.

Sexual Abuse includes criminal sexual abuse, sexual abuse of a minor, sexual abuse of a ward, abusive sexual contact, transportation of minor for sex, sex trafficking of children, sex trafficking of adults by force, fraud or coercion, child pornography production, and child exploitation enterprises. This category includes persons sentenced under §2G1.1 who received a Base Offense Level of 34, and all individuals sentenced under §§2A3.1, 2A3.2, 2A3.3, 2A3.4, 2G1.2 (deleted), 2G1.3, 2G2.1, 2G2.3, and 2G2.6 of the *Guidelines Manual*.

Stalking/Harassing includes threatening or harassing communications, hoaxes, false liens, stalking, and domestic violence. This category includes persons sentenced under §§2A6.1 and 2A6.2 of the *Guidelines Manual*.

Tax includes non-payment of taxes, conspiracy to avoid taxes, offenses relating to withholding statements, aiding or advising tax fraud, failing to collect or truthfully account for and pay over taxes, failing to deposit collected taxes in required accounts after notice, alcohol and tobacco tax offenses, and customs taxes. This category includes persons sentenced under §§2T1.1, 2T1.2 (deleted), 2T1.3 (deleted), 2T1.4, 2T1.5 (deleted), 2T1.6, 2T1.7, 2T1.8, 2T1.9, 2T2.1, 2T2.2, 2T3.1, and 2T3.2 (deleted) of the *Guidelines Manual*.

Other Miscellaneous Offenses includes interference with a flight crew, unlawful sale, transportation, possession, manufacturing, or importation of drug paraphernalia, distributing, importing, or exporting listed chemicals, evading reporting or recordkeeping requirements involving chemicals, acquiring a controlled substance by fraud or forgery, border tunnels and subterranean passages, and all other felony and miscellaneous offenses not previously listed in any of the other categories or covered by specific guidelines. This category includes persons sentenced under §§2A5.2, 2D1.7, 2D1.11, 2D1.12, 2D1.13, 2D2.2, 2D2.3, 2D3.1, 2X5.1, 2X5.2, and 2X7.1 of the *Guidelines Manual*. In addition, this category includes persons sentenced under §§2X1.1, 2X2.1, 2X3.1, 2X6.1, and 2X7.2 of the *Guidelines Manual* if no underlying guideline was provided.

Upward Departure

Upward Departure consists of cases in which the sentence imposed was above the applicable guideline range and for which the court cited a reason on Part V of the Statement of Reasons form (Departures Pursuant to the Guidelines Manual). In these cases, the court may also have cited 18 U.S.C. § 3553 or factors or reasons specifically prohibited in the provisions, policy statements, or commentary of the sentencing guidelines as additional reasons. This category includes departures which result from government motions as well as from motions by the parties.

Upward Variance

Upward Variance consists of cases in which the sentence imposed was above the applicable guideline range and for which the court cited a reason on Part VI of the Statement of Reasons form (Court Determination for a Variance). This category includes variances which result from government motions as well as from motions by the defendant.

Within Guideline Range

Cases are classified in this category when the sentence is within both the guideline range and within the statutory minimum and maximum. The sentence must meet minimum zone requirements as well. In rare instances when a very small departure or variance is granted, but the sentence is still within the original guideline range, the sentence is reported as within range.

Year

Information on *Year* is obtained from the Judgment and Commitment Order. Unless otherwise indicated, the sentencing year is defined as the fiscal year in which the individual was sentenced.