

United States Sentencing Commission Quarterly Data Report



**1st Quarter Release
Preliminary Fiscal Year 2026 Data
Through December 31, 2025**

Introduction

As part of its ongoing mission, the United States Sentencing Commission provides Congress, the judiciary, the executive branch, and the general public with data extracted and analyzed from sentencing documents submitted to the Commission by the courts.¹ Data is reported on an annual basis in the Commission’s *Annual Report* and *Sourcebook of Federal Sentencing Statistics*.² Additional information on Commission data can be found through the Commission’s “Interactive Data Analyzer” at <https://ida.ussc.gov>.

After the Supreme Court’s decision in *United States v. Booker* in 2005, the Commission began reporting data on a quarterly basis in order to provide real-time data concerning the sentences imposed in the federal courts. The types of data reported increased over time to accommodate various requests for additional information. These reports were eventually standardized in a format that was largely unchanged through fiscal year 2015. In fiscal year 2016, the Commission revised the format for its quarterly reports, to include information not previously reported on a quarterly basis, and to make it easier to understand the data that was presented.

In 2018, the Commission again updated the way it presented quarterly data to reflect methodological changes in the way the Commission analyzes its data. Principal among them was the way in which cases are assigned to a “type of crime” (previously called offense type), which are established by the guideline (or guidelines) that the court applied in determining the sentence. Additionally, sentences were capped at 470 months for all analyses, consistent with the Commission’s long-standing practice of assigning a value of 470 months to any life imprisonment sentence.

Beginning with this report, the Commission is again updating the way it presents data. This report reflects changes made to the sentencing guidelines by Amendment 836,³ which eliminated departures and created a new adjustment for participation in an Early Disposition Program.⁴ Several tables and figures in this report are affected by these changes. For example, tables that reported information solely for departures have been removed.

Additionally, all analyses reporting data on the position of the sentence imposed relative to the guideline range have been revised. For these analyses, cases are now assigned to one of four broad categories: Within Guideline Range, Above Guideline Range, Substantial Assistance,

¹ In each felony or Class A misdemeanor case sentenced in federal court, sentencing courts are required to submit the following documents to the Commission: the Judgment and Commitment Order, the Statement of Reasons, the plea agreement (if applicable), the indictment or other charging document, and the presentence report. *See* 28 U.S.C. § 994(w).

² Electronic copies of the *Annual Report* and *Sourcebook of Federal Sentencing Statistics* for fiscal years 1995 through 2025 are available at the Commission’s website, www.ussc.gov.

³ Amendment 836 became effective on November 1, 2025.

⁴ Previously EDP participation was recognized in a departure provision. *See generally Guidelines Manual* §5K3.1 (2024 ed.).

and Below Guideline Range. Cases in which the court applied an adjustment at §3F1.1 for participation in an Early Disposition Program will be reported in the broad category corresponding to the sentence imposed in the case.

Table 8 provides additional detail regarding the position of the sentence relative to the guideline range. On that table, the number of cases in which the EDP adjustment was applied is reported in a subcategory of each of the four broad categories. For example, Within Guideline Range cases are reported in two subcategories: those in which the court did not apply the adjustment at §3F1.1 and those in which it did apply the adjustment. Cases involving substantial assistance are reported in three subcategories: those in which the court cited only the defendant's substantial assistance as the reason for the sentence, those in which the court also applied the EDP adjustment at §3F1.1, and those in which the court cited some additional reason for the sentence. Below Guideline Range cases also are reported in three subcategories: those in which the court applied the EDP adjustment at §3F1.1, those in which the government requested a sentence below the guideline range (for a reason other than the defendant's substantial assistance), and those in which the government did not request a sentence below the guideline range. Tables 9 through 11 report information using the four broad categories, but report Below Guideline Range cases by its three subcategories.

Finally, Table 12 has been revised to report new data regarding the plea status for all cases. Unlike prior years, data on the plea status is now available and is presented for all cases, including Within Guideline Range cases.

The data in this report is preliminary and subject to change as the Commission collects, analyzes, and reports on data from additional cases throughout the fiscal year. When data for each new quarter is made available, the Commission will update the previous preliminary quarterly totals in the most recent release until the release of the final fiscal year data in the Commission's *Sourcebook*.⁵

⁵ Data for previous quarters may change for many reasons. For example, the courts have up to 30 days after the entry of judgment in a case to submit court documents to the Commission. The Commission both extracts information from the documents and screens cases through the quality control procedures and does not include any case in a data release unless it has been fully entered and reviewed.

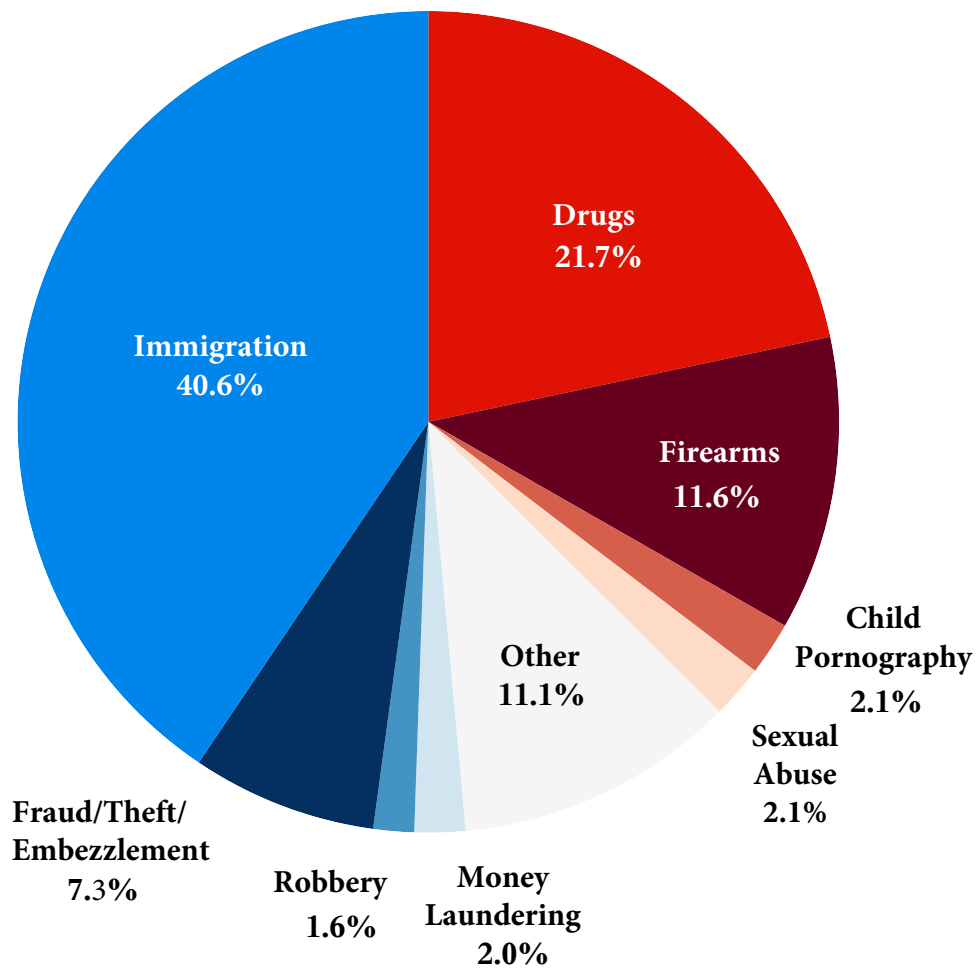
CONTENTS

Figure 1: Sentenced Individuals by Type of Crime	1
Table 1: Sentenced Individuals by Type of Crime	2
Table 2: Sentenced Individuals in Each Circuit and District.....	3
Figure 2: Number of Sentenced Individuals by Selected Primary Guidelines	5
Table 3: Race of Sentenced Individuals by Type of Crime	6
Table 4: Gender of Sentenced Individuals by Type of Crime	7
Table 5: Citizenship of Sentenced Individuals by Type of Crime.....	8
Table 6: Sentence Length by Type of Crime	9
Table 7: Sentence Type by Type of Crime	10
Table 8: Sentence Imposed Relative to the Guideline Range.....	11
Table 9: Sentence Imposed Relative to the Guideline Range In Each Circuit and District.....	12
Table 10: Sentence Imposed Relative to the Guideline Range by Type of Crime	15
Table 11: Sentence Imposed Relative to the Guideline Range by Primary Sentencing Guideline	16
Table 12: Type of Plea by Sentence Imposed Relative to the Guideline Range	18
Table 13: Extent of Above Guideline Range by Type of Crime	19
Table 14: Extent of §5K1.1 Substantial Assistance by Type of Crime	20
Table 15: Extent of EDP Below Range by Type of Crime.....	21
Table 16: Extent of Government Below Range by Type of Crime	22
Table 17: Extent of Non-Government Below Range by Type of Crime	23
Figure 3: Sentence Length and Guideline Minimum Quarterly Data for Sentenced Individuals	24

Figure 4: Sentence Length and Guideline Minimum Quarterly Data for Individuals Sentenced Under §2B1.1	25
Figure 5: Sentence Length and Guideline Minimum Quarterly Data for Individuals Sentenced Under §2K2.1	26
Figure 6: Sentence Length and Guideline Minimum Quarterly Data for Individuals Sentenced Under §2L1.1	27
Figure 7: Sentence Length and Guideline Minimum Quarterly Data for Individuals Sentenced Under §2L1.2	28
Figure 8: Sentence Length and Guideline Minimum Quarterly Data for Individuals Sentenced Under §2D1.1	29
Figure 9: Distribution of Primary Drug Type in Federal Drug Cases	30
Figure 10: Sentence Length Quarterly Data in Drug Trafficking Cases by Major Drug Type	31
<i>Appendix</i>	
Appendix A: Descriptions of Datafiles and Variables.....	A-1

Figure 1

SENTENCED INDIVIDUALS BY TYPE OF CRIME¹
1st Quarter 2026 Preliminary Cumulative Data
(October 1, 2025, through December 31, 2025)



¹ This figure includes the 16,341 cases reported to the Commission. The Drugs category includes trafficking and simple possession. Descriptions of variables used in this figure are provided in Appendix A.

SOURCE: U.S. Sentencing Commission, Preliminary 2026 Datafile, USSCFY26 (October 1, 2025, through December 31, 2025).

Table 1

SENTENCED INDIVIDUALS BY TYPE OF CRIME¹

1st Quarter 2026 Preliminary Cumulative Data (October 1, 2025, through December 31, 2025)

TYPE OF CRIME	N	%
TOTAL	16,341	100.0
Administration of Justice	163	1.0
Antitrust	2	0.0
Arson	12	0.1
Assault	209	1.3
Bribery/Corruption	80	0.5
Burglary/Trespass	11	0.1
Child Pornography	339	2.1
Commercialized Vice	26	0.2
Drug Possession	19	0.1
Drug Trafficking	3,522	21.6
Environmental	42	0.3
Extortion/Racketeering	16	0.1
Firearms	1,893	11.6
Food and Drug	13	0.1
Forgery/Counter/Copyright	16	0.1
Fraud/Theft/Embezzlement	1,190	7.3
Immigration	6,634	40.6
Individual Rights	16	0.1
Kidnapping	21	0.1
Manslaughter	16	0.1
Money Laundering	324	2.0
Murder	67	0.4
National Defense	250	1.5
Obscenity/Other Sex Offenses	91	0.6
Prison Offenses	93	0.6
Robbery	264	1.6
Sexual Abuse	335	2.1
Stalking/Harassing	66	0.4
Tax	75	0.5
Other	536	3.3

¹ Descriptions of variables used in this table are provided in Appendix A.

SOURCE: U.S. Sentencing Commission, Preliminary 2026 Datafile, USSCFY26 (October 1, 2025, through December 31, 2025).

Table 2

SENTENCED INDIVIDUALS IN EACH CIRCUIT AND DISTRICT¹

1st Quarter 2026 Preliminary Cumulative Data
(October 1, 2025, through December 31, 2025)

CIRCUIT			CIRCUIT		
District	N	%	District	N	%
TOTAL	16,341	100.0			
D.C. CIRCUIT	85	0.5	FIFTH CIRCUIT	5,619	34.4
District of Columbia	85	0.5	Louisiana		
FIRST CIRCUIT	402	2.5	Eastern	102	0.6
Maine	27	0.2	Middle	38	0.2
Massachusetts	114	0.7	Western	90	0.6
New Hampshire	20	0.1	Mississippi		
Puerto Rico	210	1.3	Northern	29	0.2
Rhode Island	31	0.2	Southern	125	0.8
SECOND CIRCUIT	581	3.6	Texas		
Connecticut	72	0.4	Eastern	216	1.3
New York			Northern	378	2.3
Eastern	107	0.7	Southern	1,926	11.8
Northern	95	0.6	Western	2,715	16.6
Southern	155	0.9	SIXTH CIRCUIT	953	5.8
Western	103	0.6	Kentucky		
Vermont	49	0.3	Eastern	97	0.6
THIRD CIRCUIT	570	3.5	Western	86	0.5
Delaware	36	0.2	Michigan		
New Jersey	167	1.0	Eastern	187	1.1
Pennsylvania			Western	53	0.3
Eastern	126	0.8	Ohio		
Middle	106	0.6	Northern	156	1.0
Western	118	0.7	Southern	123	0.8
Virgin Islands	17	0.1	Tennessee		
FOURTH CIRCUIT	941	5.8	Eastern	115	0.7
Maryland	103	0.6	Middle	65	0.4
North Carolina			Western	71	0.4
Eastern	166	1.0	SEVENTH CIRCUIT	459	2.8
Middle	79	0.5	Illinois		
Western	81	0.5	Central	40	0.2
South Carolina	117	0.7	Northern	128	0.8
Virginia			Southern	62	0.4
Eastern	207	1.3	Indiana		
Western	44	0.3	Northern	72	0.4
West Virginia			Southern	74	0.5
Eastern			Wisconsin		
Western			Eastern	60	0.4
Northern	91	0.6	Western	23	0.1
Southern	53	0.3			

Table 2 (cont.)

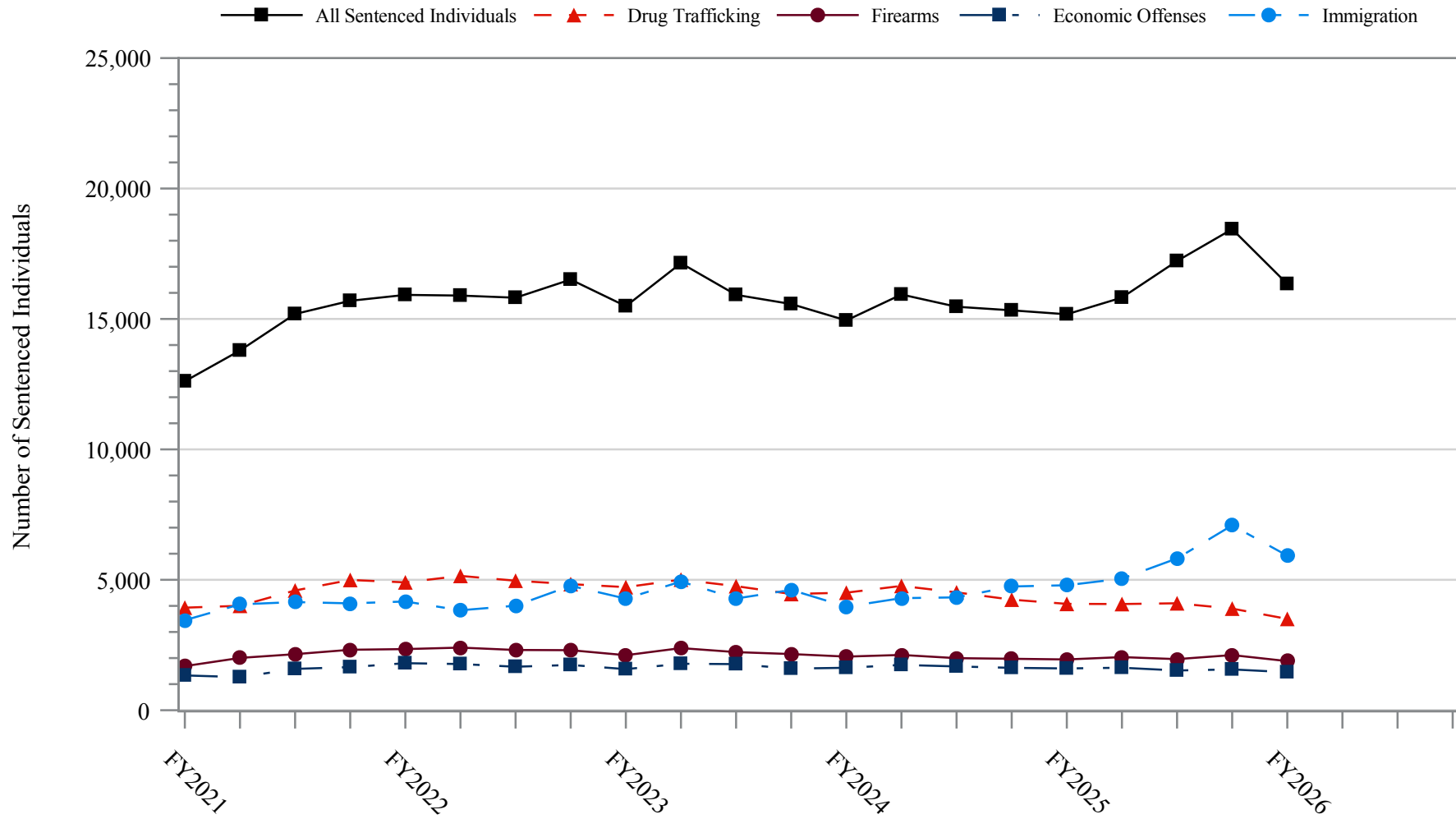
CIRCUIT			CIRCUIT		
District	N	%	District	N	%
EIGHTH CIRCUIT	1,097	6.7	TENTH CIRCUIT	1,639	10.0
Arkansas			Colorado	74	0.5
Eastern	109	0.7	Kansas	89	0.5
Western	41	0.3	New Mexico	956	5.9
Iowa			Oklahoma		
Northern	94	0.6	Eastern	60	0.4
Southern	70	0.4	Northern	125	0.8
Minnesota	123	0.8	Western	119	0.7
Missouri			Utah	176	1.1
Eastern	248	1.5	Wyoming	40	0.2
Western	163	1.0			
Nebraska	87	0.5	ELEVENTH CIRCUIT	1,401	8.6
North Dakota	62	0.4	Alabama		
South Dakota	100	0.6	Middle	59	0.4
			Northern	114	0.7
NINTH CIRCUIT	2,594	15.9	Southern	81	0.5
Alaska	50	0.3	Florida		
Arizona	934	5.7	Middle	429	2.6
California			Northern	110	0.7
Central	277	1.7	Southern	359	2.2
Eastern	80	0.5	Georgia		
Northern	85	0.5	Middle	86	0.5
Southern	621	3.8	Northern	116	0.7
Guam	6	0.0	Southern	47	0.3
Hawaii	29	0.2			
Idaho	78	0.5			
Montana	102	0.6			
Nevada	55	0.3			
Northern Mariana Islands	6	0.0			
Oregon	89	0.5			
Washington					
Eastern	77	0.5			
Western	105	0.6			

¹ Descriptions of variables used in this table are provided in Appendix A.

SOURCE: U.S. Sentencing Commission, Preliminary 2026 Datafile, USSCFY26 (October 1, 2025, through December 31, 2025).

Figure 2

NUMBER OF SENTENCED INDIVIDUALS BY SELECTED PRIMARY GUIDELINES¹
Fiscal Years 2021 - 2025,
1st Quarter 2026 Preliminary Cumulative Data (October 1, 2025, through December 31, 2025)



¹ The *Drug Trafficking* category includes individuals sentenced under §§2D1.1, 2D1.2, 2D1.5, 2D1.6, 2D1.8, 2D1.10, or 2D1.14. The *Firearms* category includes individuals sentenced under §§2K1.3, 2K1.4, 2K2.1, 2K2.4, or 2K2.5. The *Economic Offenses* category includes individuals sentenced under §§2B1.1, 2B1.4, 2B1.5, 2B2.1, 2B3.1, 2B3.2, 2B4.1, 2B5.1, or 2B5.3. The *Immigration* category includes individuals sentenced under §§2L1.1, 2L1.2, 2L2.1, or 2L2.2. Descriptions of variables used in this figure are provided in Appendix A.

SOURCE: U.S. Sentencing Commission, 2021 - 2025 Datafiles, USSCFY21 - USSCFY25, and Preliminary Data from USSCFY26 (October 1, 2025, through December 31, 2025).

Table 3

RACE OF SENTENCED INDIVIDUALS BY TYPE OF CRIME¹
1st Quarter 2026 Preliminary Cumulative Data (October 1, 2025, through December 31, 2025)

TYPE OF CRIME	TOTAL	WHITE		BLACK		HISPANIC		OTHER	
		N	%	N	%	N	%	N	%
TOTAL	15,594	2,642	16.9	3,240	20.8	9,143	58.6	569	3.6
Administration of Justice	161	39	24.2	31	19.3	80	49.7	11	6.8
Antitrust	2	2	100.0	0	0.0	0	0.0	0	0.0
Arson	12	4	33.3	1	8.3	5	41.7	2	16.7
Assault	201	31	15.4	56	27.9	51	25.4	63	31.3
Bribery/Corruption	80	31	38.8	26	32.5	17	21.3	6	7.5
Burglary/Trespass	11	3	27.3	6	54.5	1	9.1	1	9.1
Child Pornography	337	245	72.7	28	8.3	48	14.2	16	4.7
Commercialized Vice	26	11	42.3	5	19.2	8	30.8	2	7.7
Drug Possession	16	9	56.3	5	31.3	0	0.0	2	12.5
Drug Trafficking	3,519	784	22.3	1,066	30.3	1,572	44.7	97	2.8
Environmental	42	13	31.0	2	4.8	20	47.6	7	16.7
Extortion/Racketeering	16	7	43.8	4	25.0	3	18.8	2	12.5
Firearms	1,892	399	21.1	1,022	54.0	412	21.8	59	3.1
Food and Drug	13	10	76.9	0	0.0	2	15.4	1	7.7
Forgery/Counter/Copyright	16	4	25.0	7	43.8	4	25.0	1	6.3
Fraud/Theft/Embezzlement	1,179	438	37.2	439	37.2	221	18.7	81	6.9
Immigration	6,452	110	1.7	69	1.1	6,245	96.8	28	0.4
Individual Rights	16	8	50.0	4	25.0	4	25.0	0	0.0
Kidnapping	21	0	0.0	13	61.9	8	38.1	0	0.0
Manslaughter	16	0	0.0	4	25.0	0	0.0	12	75.0
Money Laundering	322	72	22.4	91	28.3	130	40.4	29	9.0
Murder	67	12	17.9	29	43.3	13	19.4	13	19.4
National Defense	77	12	15.6	4	5.2	57	74.0	4	5.2
Obscenity/Other Sex Offenses	91	32	35.2	10	11.0	14	15.4	35	38.5
Prison Offenses	91	19	20.9	38	41.8	28	30.8	6	6.6
Robbery	264	36	13.6	162	61.4	57	21.6	9	3.4
Sexual Abuse	335	168	50.1	50	14.9	62	18.5	55	16.4
Stalking/Harassing	66	45	68.2	8	12.1	8	12.1	5	7.6
Tax	75	34	45.3	18	24.0	12	16.0	11	14.7
Other	178	64	36.0	42	23.6	61	34.3	11	6.2

¹ Of the 16,341 cases, 747 were excluded due to missing information on sentenced individual's race. Descriptions of variables used in this table are provided in Appendix A.

Table 4

GENDER OF SENTENCED INDIVIDUALS BY TYPE OF CRIME¹
1st Quarter 2026 Preliminary Cumulative Data (October 1, 2025, through December 31, 2025)

TYPE OF CRIME	TOTAL	MALE		FEMALE	
		N	%	N	%
TOTAL	15,902	14,045	88.3	1,857	11.7
Administration of Justice	163	119	73.0	44	27.0
Antitrust	2	2	100.0	0	0.0
Arson	12	10	83.3	2	16.7
Assault	209	183	87.6	26	12.4
Bribery/Corruption	80	57	71.3	23	28.8
Burglary/Trespass	11	10	90.9	1	9.1
Child Pornography	339	337	99.4	2	0.6
Commercialized Vice	26	20	76.9	6	23.1
Drug Possession	18	10	55.6	8	44.4
Drug Trafficking	3,522	2,994	85.0	528	15.0
Environmental	42	38	90.5	4	9.5
Extortion/Racketeering	16	16	100.0	0	0.0
Firearms	1,892	1,821	96.2	71	3.8
Food and Drug	13	10	76.9	3	23.1
Forgery/Counter/Copyright	16	13	81.3	3	18.8
Fraud/Theft/Embezzlement	1,190	858	72.1	332	27.9
Immigration	6,569	5,996	91.3	573	8.7
Individual Rights	16	13	81.3	3	18.8
Kidnapping	21	21	100.0	0	0.0
Manslaughter	16	12	75.0	4	25.0
Money Laundering	324	247	76.2	77	23.8
Murder	67	63	94.0	4	6.0
National Defense	124	112	90.3	12	9.7
Obscenity/Other Sex Offenses	91	90	98.9	1	1.1
Prison Offenses	91	85	93.4	6	6.6
Robbery	264	249	94.3	15	5.7
Sexual Abuse	335	311	92.8	24	7.2
Stalking/Harassing	66	60	90.9	6	9.1
Tax	75	54	72.0	21	28.0
Other	292	234	80.1	58	19.9

¹ Of the 16,341 cases, 439 were excluded due to missing information on sentenced individual's gender. Descriptions of variables used in this table are provided in Appendix A.

Table 5

CITIZENSHIP OF SENTENCED INDIVIDUALS BY TYPE OF CRIME¹
1st Quarter 2026 Preliminary Cumulative Data (October 1, 2025, through December 31, 2025)

TYPE OF CRIME	TOTAL	U.S. CITIZEN		NON-U.S. CITIZEN	
		N	%	N	%
TOTAL	16,202	8,085	49.9	8,117	50.1
Administration of Justice	162	110	67.9	52	32.1
Antitrust	2	0	0.0	2	100.0
Arson	12	8	66.7	4	33.3
Assault	201	175	87.1	26	12.9
Bribery/Corruption	80	77	96.3	3	3.8
Burglary/Trespass	11	10	90.9	1	9.1
Child Pornography	339	321	94.7	18	5.3
Commercialized Vice	25	18	72.0	7	28.0
Drug Possession	15	13	86.7	2	13.3
Drug Trafficking	3,520	2,803	79.6	717	20.4
Environmental	40	20	50.0	20	50.0
Extortion/Racketeering	16	14	87.5	2	12.5
Firearms	1,892	1,729	91.4	163	8.6
Food and Drug	13	12	92.3	1	7.7
Forgery/Counter/Copyright	16	12	75.0	4	25.0
Fraud/Theft/Embezzlement	1,186	984	83.0	202	17.0
Immigration	6,584	451	6.8	6,133	93.2
Individual Rights	16	13	81.3	3	18.8
Kidnapping	21	16	76.2	5	23.8
Manslaughter	16	16	100.0	0	0.0
Money Laundering	324	201	62.0	123	38.0
Murder	67	56	83.6	11	16.4
National Defense	245	31	12.7	214	87.3
Obscenity/Other Sex Offenses	91	85	93.4	6	6.6
Prison Offenses	90	81	90.0	9	10.0
Robbery	264	239	90.5	25	9.5
Sexual Abuse	335	314	93.7	21	6.3
Stalking/Harassing	66	62	93.9	4	6.1
Tax	75	67	89.3	8	10.7
Other	478	147	30.8	331	69.2

¹ Of the 16,341 cases, 139 were excluded due to missing information on sentenced individual's citizenship status. Descriptions of variables used in this table are provided in Appendix A.

SOURCE: U.S. Sentencing Commission, Preliminary 2026 Datafile, USSCFY26 (October 1, 2025, through December 31, 2025).

Table 6

SENTENCE LENGTH BY TYPE OF CRIME¹

1st Quarter 2026 Preliminary Cumulative Data (October 1, 2025, through December 31, 2025)

TYPE OF CRIME	Mean Months	Median Months	N
TOTAL	43	12	16,341
Administration of Justice	10	6	163
Antitrust	--	--	2
Arson	59	60	12
Assault	65	36	209
Bribery/Corruption	19	12	80
Burglary/Trespass	20	16	11
Child Pornography	121	97	339
Commercialized Vice	14	9	26
Drug Possession	1	0	19
Drug Trafficking	90	70	3,522
Environmental	4	1	42
Extortion/Racketeering	51	14	16
Firearms	49	37	1,893
Food and Drug	12	0	13
Forgery/Counter/Copyright	18	16	16
Fraud/Theft/Embezzlement	23	12	1,190
Immigration	8	4	6,634
Individual Rights	78	36	16
Kidnapping	242	188	21
Manslaughter	68	55	16
Money Laundering	55	33	324
Murder	306	300	67
National Defense	8	0	250
Obscenity/Other Sex Offenses	20	15	91
Prison Offenses	12	9	93
Robbery	107	96	264
Sexual Abuse	219	204	335
Stalking/Harassing	28	24	66
Tax	17	12	75
Other	1	0	536

¹ Sentences greater than 470 months (including life) and probation were included in the sentence average computations as 470 months and zero months, respectively. In addition, the information presented in this table includes conditions of confinement as described in USSG §5C1.1. Descriptions of variables used in this table are provided in Appendix A.

Table 7

SENTENCE TYPE BY TYPE OF CRIME¹

1st Quarter 2026 Preliminary Cumulative Data (October 1, 2025, through December 31, 2025)

TYPE OF CRIME	TOTAL	TOTAL RECEIVING IMPRISONMENT		Prison Only		Prison and Alternatives ²		TOTAL RECEIVING PROBATION		Probation and Alternatives ²		Probation Only		TOTAL RECEIVING FINE ONLY	
		N	%	N	%	N	%	N	%	N	%	N	%	N	%
TOTAL	16,341	15,261	93.4	14,947	91.5	314	1.9	1,013	6.2	180	1.1	833	5.1	67	0.4
Administration of Justice	163	122	74.8	114	69.9	8	4.9	40	24.5	5	3.1	35	21.5	1	0.6
Antitrust	2	0	0.0	0	0.0	0	0.0	2	100.0	0	0.0	2	100.0	0	0.0
Arson	12	12	100.0	12	100.0	0	0.0	0	0.0	0	0.0	0	0.0	0	0.0
Assault	209	180	86.1	173	82.8	7	3.3	28	13.4	3	1.4	25	12.0	1	0.5
Bribery/Corruption	80	57	71.3	48	60.0	9	11.3	23	28.8	10	12.5	13	16.3	0	0.0
Burglary/Trespass	11	10	90.9	9	81.8	1	9.1	1	9.1	0	0.0	1	9.1	0	0.0
Child Pornography	339	338	99.7	332	97.9	6	1.8	1	0.3	1	0.3	0	0.0	0	0.0
Commercialized Vice	26	20	76.9	17	65.4	3	11.5	5	19.2	1	3.8	4	15.4	1	3.8
Drug Possession	19	12	63.2	12	63.2	0	0.0	4	21.1	1	5.3	3	15.8	3	15.8
Drug Trafficking	3,522	3,421	97.1	3,326	94.4	95	2.7	101	2.9	25	0.7	76	2.2	0	0.0
Environmental	42	21	50.0	21	50.0	0	0.0	20	47.6	2	4.8	18	42.9	1	2.4
Extortion/Racketeering	16	14	87.5	13	81.3	1	6.3	2	12.5	1	6.3	1	6.3	0	0.0
Firearms	1,893	1,787	94.4	1,736	91.7	51	2.7	106	5.6	28	1.5	78	4.1	0	0.0
Food and Drug	13	5	38.5	5	38.5	0	0.0	8	61.5	1	7.7	7	53.8	0	0.0
Forgery/Counter/Copyright	16	15	93.8	15	93.8	0	0.0	1	6.3	0	0.0	1	6.3	0	0.0
Fraud/Theft/Embezzlement	1,190	909	76.4	866	72.8	43	3.6	275	23.1	54	4.5	221	18.6	6	0.5
Immigration	6,634	6,439	97.1	6,396	96.4	43	0.6	195	2.9	23	0.3	172	2.6	0	0.0
Individual Rights	16	13	81.3	13	81.3	0	0.0	3	18.8	0	0.0	3	18.8	0	0.0
Kidnapping	21	21	100.0	20	95.2	1	4.8	0	0.0	0	0.0	0	0.0	0	0.0
Manslaughter	16	14	87.5	13	81.3	1	6.3	2	12.5	0	0.0	2	12.5	0	0.0
Money Laundering	324	290	89.5	279	86.1	11	3.4	34	10.5	8	2.5	26	8.0	0	0.0
Murder	67	66	98.5	65	97.0	1	1.5	1	1.5	0	0.0	1	1.5	0	0.0
National Defense	250	237	94.8	235	94.0	2	0.8	8	3.2	0	0.0	8	3.2	5	2.0
Obscenity/Other Sex Offenses	91	88	96.7	84	92.3	4	4.4	3	3.3	0	0.0	3	3.3	0	0.0
Prison Offenses	93	88	94.6	83	89.2	5	5.4	5	5.4	1	1.1	4	4.3	0	0.0
Robbery	264	261	98.9	255	96.6	6	2.3	3	1.1	0	0.0	3	1.1	0	0.0
Sexual Abuse	335	332	99.1	325	97.0	7	2.1	3	0.9	1	0.3	2	0.6	0	0.0
Stalking/Harassing	66	58	87.9	53	80.3	5	7.6	8	12.1	1	1.5	7	10.6	0	0.0
Tax	75	51	68.0	49	65.3	2	2.7	24	32.0	6	8.0	18	24.0	0	0.0
Other	536	380	70.9	378	70.5	2	0.4	107	20.0	8	1.5	99	18.5	49	9.1

¹ Descriptions of variables used in this table are provided in Appendix A.² Alternatives include all cases in which sentenced individuals received conditions of confinement as described in USSG §5C1.1.

Table 8

SENTENCE IMPOSED RELATIVE TO THE GUIDELINE RANGE¹
1st Quarter 2026 Preliminary Cumulative Data (October 1, 2025, through December 31, 2025)

	N	%
TOTAL CASES	16,209	100.0
Within Guideline Range	9,548	58.9
Within Range	8,915	55.0
EDP Within Range ²	633	3.9
Above Guideline Range³	684	4.2
Above Range	682	4.2
EDP Above Range	2	0.0
§5K1.1 Substantial Assistance	1,086	6.7
§5K1.1 Substantial Assistance Only	491	3.0
§5K1.1 Substantial Assistance and EDP	12	0.1
§5K1.1 Substantial Assistance and Other Below Range ⁴	583	3.6
Below Guideline Range	4,891	30.2
EDP Below Range ⁵	460	2.8
Government Below Range ⁶	1,498	9.2
Non-Government Below Range ⁷	2,933	18.1

¹ This table reflects the 16,341 cases sentenced on or after October 1, 2025, with court documentation cumulatively received, coded, and edited at the U.S. Sentencing Commission by April 30, 2026. Of these, 132 cases were excluded because information was missing from the submitted documents that prevented the comparison of the sentence and the guideline range. Descriptions of variables used in this table are provided in Appendix A.

² Cases in which the court applied the adjustment at §3F1.1 for participation in an Early Disposition Program and where the sentence imposed was within the guideline range.

³ Cases in which the sentence imposed was above the applicable guideline range and for which the court cited a reason on Part VI of the Statement of Reasons form, other than §5K1.1, or where no reason was given.

⁴ Cases where the sentence imposed was below the applicable guideline range and where the court cited §5K1.1 and at least one other reason on Part VI of the Statement of Reasons form.

⁵ Cases in which the court applied the adjustment at §3F1.1 for participation in an Early Disposition Program, where the sentence imposed was below the guideline range, and the court cited a reason on Part VI of the Statement of Reasons form other than §5K1.1 or gave no reason for the sentence.

⁶ Cases in which the government sought a sentence below the guideline range, the court did not apply the adjustment at §3F1.1, the sentence imposed was below the applicable guideline range, and the court cited a reason on Part VI of the Statement of Reasons form other than §5K1.1 or gave no reason for the sentence.

⁷ Cases in which the government did not seek a sentence below the guideline range, the court did not apply the adjustment at §3F1.1, the sentence imposed was below the applicable guideline range, and the court cited a reason on Part VI of the Statement of Reasons form other than §5K1.1 or gave no reason for the sentence.

SOURCE: U.S. Sentencing Commission, Preliminary 2026 Datafile, USSCFY26 (October 1, 2025, through December 31, 2025).

Table 9

**SENTENCE IMPOSED RELATIVE TO THE GUIDELINE RANGE
IN EACH CIRCUIT AND DISTRICT¹**

1st Quarter 2026 Preliminary Cumulative Data (October 1, 2025, through December 31, 2025)

CIRCUIT District	TOTAL	WITHIN GUIDELINE RANGE		ABOVE GUIDELINE RANGE		§5K1.1 SUBSTANTIAL ASSISTANCE		EDP BELOW RANGE		GOVERNMENT BELOW RANGE		NON- GOVERNMENT BELOW RANGE	
		N	%	N	%	N	%	N	%	N	%	N	%
TOTAL	16,209	9,548	58.9	684	4.2	1,086	6.7	460	2.8	1,498	9.2	2,933	18.1
D.C. CIRCUIT	85	31	36.5	2	2.4	13	15.3	0	0.0	4	4.7	35	41.2
District of Columbia	85	31	36.5	2	2.4	13	15.3	0	0.0	4	4.7	35	41.2
FIRST CIRCUIT	401	132	32.9	11	2.7	42	10.5	0	0.0	115	28.7	101	25.2
Maine	27	9	33.3	0	0.0	2	7.4	0	0.0	1	3.7	15	55.6
Massachusetts	114	31	27.2	2	1.8	18	15.8	0	0.0	32	28.1	31	27.2
New Hampshire	20	4	20.0	0	0.0	1	5.0	0	0.0	10	50.0	5	25.0
Puerto Rico	209	83	39.7	9	4.3	20	9.6	0	0.0	64	30.6	33	15.8
Rhode Island	31	5	16.1	0	0.0	1	3.2	0	0.0	8	25.8	17	54.8
SECOND CIRCUIT	578	211	36.5	15	2.6	75	13.0	0	0.0	63	10.9	214	37.0
Connecticut	72	26	36.1	1	1.4	8	11.1	0	0.0	14	19.4	23	31.9
New York													
Eastern	107	27	25.2	1	0.9	15	14.0	0	0.0	10	9.3	54	50.5
Northern	95	46	48.4	3	3.2	15	15.8	0	0.0	2	2.1	29	30.5
Southern	153	39	25.5	2	1.3	18	11.8	0	0.0	22	14.4	72	47.1
Western	102	61	59.8	7	6.9	12	11.8	0	0.0	8	7.8	14	13.7
Vermont	49	12	24.5	1	2.0	7	14.3	0	0.0	7	14.3	22	44.9
THIRD CIRCUIT	570	240	42.1	17	3.0	83	14.6	1	0.2	104	18.2	125	21.9
Delaware	36	25	69.4	0	0.0	5	13.9	1	2.8	3	8.3	2	5.6
New Jersey	167	71	42.5	2	1.2	24	14.4	0	0.0	40	24.0	30	18.0
Pennsylvania													
Eastern	126	46	36.5	4	3.2	20	15.9	0	0.0	20	15.9	36	28.6
Middle	106	50	47.2	5	4.7	17	16.0	0	0.0	13	12.3	21	19.8
Western	118	37	31.4	6	5.1	16	13.6	0	0.0	26	22.0	33	28.0
Virgin Islands	17	11	64.7	0	0.0	1	5.9	0	0.0	2	11.8	3	17.6
FOURTH CIRCUIT	936	468	50.0	43	4.6	101	10.8	0	0.0	71	7.6	253	27.0
Maryland	101	37	36.6	5	5.0	13	12.9	0	0.0	22	21.8	24	23.8
North Carolina													
Eastern	166	108	65.1	3	1.8	31	18.7	0	0.0	4	2.4	20	12.0
Middle	79	44	55.7	10	12.7	7	8.9	0	0.0	6	7.6	12	15.2
Western	81	34	42.0	2	2.5	12	14.8	0	0.0	6	7.4	27	33.3
South Carolina	117	53	45.3	1	0.9	17	14.5	0	0.0	6	5.1	40	34.2
Virginia													
Eastern	205	107	52.2	10	4.9	6	2.9	0	0.0	17	8.3	65	31.7
Western	43	20	46.5	0	0.0	7	16.3	0	0.0	4	9.3	12	27.9
West Virginia													
Northern	91	42	46.2	10	11.0	4	4.4	0	0.0	3	3.3	32	35.2
Southern	53	23	43.4	2	3.8	4	7.5	0	0.0	3	5.7	21	39.6

Table 9 (cont.)

CIRCUIT District	TOTAL	WITHIN GUIDELINE RANGE		ABOVE GUIDELINE RANGE		§5K1.1 SUBSTANTIAL ASSISTANCE		EDP BELOW RANGE		GOVERNMENT BELOW RANGE		NON- GOVERNMENT BELOW RANGE	
		N	%	N	%	N	%	N	%	N	%	N	%
FIFTH CIRCUIT	5,590	4,333	77.5	357	6.4	176	3.1	28	0.5	98	1.8	598	10.7
Louisiana													
Eastern	102	71	69.6	5	4.9	9	8.8	0	0.0	2	2.0	15	14.7
Middle	38	26	68.4	0	0.0	6	15.8	0	0.0	0	0.0	6	15.8
Western	90	61	67.8	1	1.1	5	5.6	0	0.0	7	7.8	16	17.8
Mississippi													
Northern	25	15	60.0	1	4.0	1	4.0	0	0.0	2	8.0	6	24.0
Southern	125	98	78.4	4	3.2	12	9.6	0	0.0	0	0.0	11	8.8
Texas													
Eastern	215	136	63.3	9	4.2	17	7.9	0	0.0	23	10.7	30	14.0
Northern	378	264	69.8	17	4.5	27	7.1	0	0.0	10	2.6	60	15.9
Southern	1,924	1,496	77.8	26	1.4	67	3.5	28	1.5	33	1.7	274	14.2
Western	2,693	2,166	80.4	294	10.9	32	1.2	0	0.0	21	0.8	180	6.7
SIXTH CIRCUIT	951	396	41.6	30	3.2	110	11.6	1	0.1	136	14.3	278	29.2
Kentucky													
Eastern	97	47	48.5	0	0.0	16	16.5	0	0.0	6	6.2	28	28.9
Western	86	32	37.2	1	1.2	20	23.3	0	0.0	15	17.4	18	20.9
Michigan													
Eastern	185	85	45.9	2	1.1	7	3.8	0	0.0	9	4.9	82	44.3
Western	53	34	64.2	2	3.8	5	9.4	0	0.0	0	0.0	12	22.6
Ohio													
Northern	156	62	39.7	10	6.4	13	8.3	0	0.0	21	13.5	50	32.1
Southern	123	35	28.5	1	0.8	19	15.4	1	0.8	41	33.3	26	21.1
Tennessee													
Eastern	115	52	45.2	8	7.0	16	13.9	0	0.0	18	15.7	21	18.3
Middle	65	20	30.8	4	6.2	6	9.2	0	0.0	20	30.8	15	23.1
Western	71	29	40.8	2	2.8	8	11.3	0	0.0	6	8.5	26	36.6
SEVENTH CIRCUIT	457	191	41.8	16	3.5	46	10.1	0	0.0	49	10.7	155	33.9
Illinois													
Central	39	15	38.5	2	5.1	7	17.9	0	0.0	2	5.1	13	33.3
Northern	127	38	29.9	6	4.7	9	7.1	0	0.0	9	7.1	65	51.2
Southern	62	38	61.3	4	6.5	3	4.8	0	0.0	1	1.6	16	25.8
Indiana													
Northern	72	46	63.9	1	1.4	9	12.5	0	0.0	5	6.9	11	15.3
Southern	74	37	50.0	1	1.4	12	16.2	0	0.0	5	6.8	19	25.7
Wisconsin													
Eastern	60	13	21.7	2	3.3	4	6.7	0	0.0	23	38.3	18	30.0
Western	23	4	17.4	0	0.0	2	8.7	0	0.0	4	17.4	13	56.5
EIGHTH CIRCUIT	1,097	467	42.6	59	5.4	120	10.9	2	0.2	131	11.9	318	29.0
Arkansas													
Eastern	109	49	45.0	7	6.4	11	10.1	0	0.0	7	6.4	35	32.1
Western	41	15	36.6	5	12.2	5	12.2	0	0.0	2	4.9	14	34.1
Iowa													
Northern	94	44	46.8	4	4.3	15	16.0	0	0.0	8	8.5	23	24.5
Southern	70	27	38.6	2	2.9	8	11.4	0	0.0	4	5.7	29	41.4
Minnesota	123	33	26.8	3	2.4	16	13.0	0	0.0	21	17.1	50	40.7
Missouri													
Eastern	248	117	47.2	11	4.4	20	8.1	0	0.0	55	22.2	45	18.1
Western	163	61	37.4	18	11.0	26	16.0	0	0.0	14	8.6	44	27.0
Nebraska	87	49	56.3	4	4.6	0	0.0	0	0.0	5	5.7	29	33.3
North Dakota	62	23	37.1	3	4.8	17	27.4	2	3.2	9	14.5	8	12.9
South Dakota	100	49	49.0	2	2.0	2	2.0	0	0.0	6	6.0	41	41.0

Table 9 (cont.)

CIRCUIT District	TOTAL	WITHIN GUIDELINE RANGE		ABOVE GUIDELINE RANGE		§5K1.1 SUBSTANTIAL ASSISTANCE		EDP BELOW RANGE		GOVERNMENT BELOW RANGE		NON- GOVERNMENT BELOW RANGE	
		N	%	N	%	N	%	N	%	N	%	N	%
NINTH CIRCUIT	2,515	1,126	44.8	28	1.1	173	6.9	344	13.7	465	18.5	379	15.1
Alaska	50	14	28.0	1	2.0	7	14.0	0	0.0	18	36.0	10	20.0
Arizona	879	531	60.4	7	0.8	20	2.3	170	19.3	93	10.6	58	6.6
California													
Central	272	90	33.1	5	1.8	37	13.6	13	4.8	36	13.2	91	33.5
Eastern	80	24	30.0	1	1.3	16	20.0	1	1.3	13	16.3	25	31.3
Northern	84	10	11.9	2	2.4	9	10.7	0	0.0	39	46.4	24	28.6
Southern	604	247	40.9	4	0.7	26	4.3	147	24.3	127	21.0	53	8.8
Guam	6	5	83.3	0	0.0	0	0.0	0	0.0	1	16.7	0	0.0
Hawaii	29	10	34.5	2	6.9	3	10.3	0	0.0	3	10.3	11	37.9
Idaho	78	43	55.1	1	1.3	9	11.5	2	2.6	8	10.3	15	19.2
Montana	102	39	38.2	0	0.0	11	10.8	0	0.0	9	8.8	43	42.2
Nevada	55	11	20.0	0	0.0	1	1.8	10	18.2	17	30.9	16	29.1
Northern Mariana Islands	6	2	33.3	0	0.0	3	50.0	0	0.0	0	0.0	1	16.7
Oregon	88	22	25.0	1	1.1	18	20.5	0	0.0	40	45.5	7	8.0
Washington													
Eastern	77	35	45.5	3	3.9	12	15.6	0	0.0	18	23.4	9	11.7
Western	105	43	41.0	1	1.0	1	1.0	1	1.0	43	41.0	16	15.2
TENTH CIRCUIT	1,638	1,150	70.2	47	2.9	43	2.6	83	5.1	156	9.5	159	9.7
Colorado	74	24	32.4	5	6.8	7	9.5	8	10.8	15	20.3	15	20.3
Kansas	89	53	59.6	5	5.6	3	3.4	0	0.0	10	11.2	18	20.2
New Mexico	956	793	82.9	9	0.9	15	1.6	56	5.9	38	4.0	45	4.7
Oklahoma													
Eastern	60	41	68.3	5	8.3	2	3.3	0	0.0	2	3.3	10	16.7
Northern	125	85	68.0	2	1.6	6	4.8	0	0.0	13	10.4	19	15.2
Western	119	63	52.9	16	13.4	1	0.8	0	0.0	7	5.9	32	26.9
Utah	175	73	41.7	4	2.3	6	3.4	18	10.3	64	36.6	10	5.7
Wyoming	40	18	45.0	1	2.5	3	7.5	1	2.5	7	17.5	10	25.0
ELEVENTH CIRCUIT	1,391	803	57.7	59	4.2	104	7.5	1	0.1	106	7.6	318	22.9
Alabama													
Middle	59	34	57.6	4	6.8	3	5.1	0	0.0	6	10.2	12	20.3
Northern	114	77	67.5	5	4.4	14	12.3	0	0.0	1	0.9	17	14.9
Southern	81	45	55.6	5	6.2	10	12.3	1	1.2	2	2.5	18	22.2
Florida													
Middle	427	252	59.0	20	4.7	38	8.9	0	0.0	15	3.5	102	23.9
Northern	109	65	59.6	6	5.5	11	10.1	0	0.0	1	0.9	26	23.9
Southern	352	203	57.7	14	4.0	12	3.4	0	0.0	31	8.8	92	26.1
Georgia													
Middle	86	52	60.5	1	1.2	9	10.5	0	0.0	1	1.2	23	26.7
Northern	116	39	33.6	2	1.7	3	2.6	0	0.0	47	40.5	25	21.6
Southern	47	36	76.6	2	4.3	4	8.5	0	0.0	2	4.3	3	6.4

¹ Of the 16,341 cases, 132 were excluded because information was missing from the submitted documents that prevented the comparison of the sentence and the guideline range. Descriptions of variables used in this table are provided in Appendix A.

Table 10

**SENTENCE IMPOSED RELATIVE TO THE GUIDELINE RANGE
BY TYPE OF CRIME¹**

1st Quarter 2026 Preliminary Cumulative Data (October 1, 2025, through December 31, 2025)

TYPE OF CRIME	TOTAL	WITHIN		ABOVE		§5K1.1		EDP		GOVERNMENT		NON- GOVERNMENT	
		GUIDELINE		GUIDELINE		SUBSTANTIAL		BELOW		BELOW		BELOW	
		RANGE		RANGE		ASSISTANCE		RANGE		RANGE		RANGE	
		N	%	N	%	N	%	N	%	N	%	N	%
TOTAL	16,209	9,548	58.9	684	4.2	1,086	6.7	460	2.8	1,498	9.2	2,933	18.1
Administration of Justice	161	79	49.1	9	5.6	4	2.5	1	0.6	25	15.5	43	26.7
Antitrust	2	0	0.0	0	0.0	1	50.0	0	0.0	1	50.0	0	0.0
Arson	12	6	50.0	2	16.7	1	8.3	0	0.0	2	16.7	1	8.3
Assault	200	108	54.0	16	8.0	6	3.0	0	0.0	26	13.0	44	22.0
Bribery/Corruption	80	9	11.3	0	0.0	35	43.8	0	0.0	9	11.3	27	33.8
Burglary/Trespass	11	6	54.5	1	9.1	0	0.0	0	0.0	3	27.3	1	9.1
Child Pornography	339	128	37.8	19	5.6	7	2.1	0	0.0	88	26.0	97	28.6
Commercialized Vice	26	17	65.4	0	0.0	3	11.5	0	0.0	1	3.8	5	19.2
Drug Possession	17	16	94.1	1	5.9	0	0.0	0	0.0	0	0.0	0	0.0
Drug Trafficking	3,520	1,095	31.1	73	2.1	608	17.3	128	3.6	608	17.3	1,008	28.6
Environmental	42	32	76.2	0	0.0	0	0.0	0	0.0	6	14.3	4	9.5
Extortion/Racketeering	16	3	18.8	3	18.8	1	6.3	0	0.0	0	0.0	9	56.3
Firearms	1,891	920	48.7	130	6.9	92	4.9	4	0.2	210	11.1	535	28.3
Food and Drug	13	8	61.5	0	0.0	0	0.0	0	0.0	3	23.1	2	15.4
Forgery/Counter/Copyright	16	13	81.3	0	0.0	2	12.5	0	0.0	0	0.0	1	6.3
Fraud/Theft/Embezzlement	1,182	516	43.7	28	2.4	141	11.9	0	0.0	158	13.4	339	28.7
Immigration	6,553	5,336	81.4	333	5.1	33	0.5	326	5.0	104	1.6	421	6.4
Individual Rights	15	3	20.0	1	6.7	4	26.7	0	0.0	3	20.0	4	26.7
Kidnapping	21	11	52.4	1	4.8	2	9.5	0	0.0	3	14.3	4	19.0
Manslaughter	16	4	25.0	6	37.5	0	0.0	0	0.0	2	12.5	4	25.0
Money Laundering	324	82	25.3	10	3.1	74	22.8	0	0.0	65	20.1	93	28.7
Murder	67	30	44.8	5	7.5	11	16.4	0	0.0	8	11.9	13	19.4
National Defense	235	199	84.7	1	0.4	9	3.8	0	0.0	9	3.8	17	7.2
Obscenity/Other Sex Offenses	91	49	53.8	8	8.8	0	0.0	0	0.0	7	7.7	27	29.7
Prison Offenses	91	61	67.0	3	3.3	0	0.0	0	0.0	15	16.5	12	13.2
Robbery	264	95	36.0	19	7.2	28	10.6	0	0.0	40	15.2	82	31.1
Sexual Abuse	334	156	46.7	6	1.8	12	3.6	1	0.3	79	23.7	80	24.0
Stalking/Harassing	66	28	42.4	6	9.1	2	3.0	0	0.0	12	18.2	18	27.3
Tax	75	16	21.3	2	2.7	10	13.3	0	0.0	9	12.0	38	50.7
Other	529	522	98.7	1	0.2	0	0.0	0	0.0	2	0.4	4	0.8

¹ Of the 16,341 cases, 132 were excluded because information was missing from the submitted documents that prevented the comparison of the sentence and the guideline range. Descriptions of variables used in this table are provided in Appendix A.

SOURCE: U.S. Sentencing Commission, Preliminary 2026 Datafile, USSCFY26 (October 1, 2025, through December 31, 2025).

Table 11

SENTENCE IMPOSED RELATIVE TO THE GUIDELINE RANGE BY PRIMARY SENTENCING GUIDELINE¹

1st Quarter 2026 Preliminary Cumulative Data (October 1, 2025, through December 31, 2025)

Guideline	Total	Within	Above	\$5K1.1	EDP	Gov't	Non-Gov't	Guideline	Total	Within	Above	\$5K1.1	EDP	Gov't	Non-Gov't
		Guideline	Guideline	Substantial	Below	Below	Below			Guideline	Guideline	Substantial	Below	Below	Below
		Range	Range	Assistance	Range	Range	Range			Range	Range	Assistance	Range	Range	Range
§2A1.1	43	22	0	8	0	4	9	§2D1.8	5	1	0	1	0	1	2
§2A1.2	15	6	5	1	0	1	2	§2D1.9	0	0	0	0	0	0	0
§2A1.3	7	3	3	0	0	0	1	§2D1.10	0	0	0	0	0	0	0
§2A1.4	9	1	3	0	0	2	3	§2D1.11	0	0	0	0	0	0	0
§2A1.5	5	1	0	0	0	3	1	§2D1.12	2	1	1	0	0	0	0
§2A2.1	50	23	5	5	0	3	14	§2D1.13	1	1	0	0	0	0	0
§2A2.2	112	57	10	1	0	16	28	§2D1.14	0	0	0	0	0	0	0
§2A2.3	17	15	1	0	0	0	1	§2D2.1	9	8	1	0	0	0	0
§2A2.4	73	38	2	0	0	10	23	§2D2.2	6	6	0	0	0	0	0
§2A3.1	31	15	0	2	1	6	7	§2D2.3	0	0	0	0	0	0	0
§2A3.2	14	10	2	0	0	2	0	§2D3.1	1	1	0	0	0	0	0
§2A3.3	1	1	0	0	0	0	0	§2D3.2	0	0	0	0	0	0	0
§2A3.4	14	7	0	0	0	4	3	§2D3.3	0	0	0	0	0	0	0
§2A3.5	82	46	5	0	0	7	24	§2D3.4	0	0	0	0	0	0	0
§2A4.1	20	10	1	2	0	3	4	§2D3.5	0	0	0	0	0	0	0
§2A4.2	0	0	0	0	0	0	0	§2E1.1	7	1	0	1	0	0	5
§2A5.1	0	0	0	0	0	0	0	§2E1.2	1	1	0	0	0	0	0
§2A5.2	11	8	0	0	0	1	2	§2E1.3	0	0	0	0	0	0	0
§2A5.3	0	0	0	0	0	0	0	§2E1.4	0	0	0	0	0	0	0
§2A6.1	46	22	2	0	0	7	15	§2E1.5	0	0	0	0	0	0	0
§2A6.2	19	6	4	2	0	4	3	§2E2.1	0	0	0	0	0	0	0
§2B1.1	1,134	480	27	139	0	154	334	§2E3.1	16	10	0	1	0	1	4
§2B1.2	0	0	0	0	0	0	0	§2E3.2	0	0	0	0	0	0	0
§2B1.3	0	0	0	0	0	0	0	§2E3.3	0	0	0	0	0	0	0
§2B1.4	4	0	0	2	0	1	1	§2E4.1	1	0	0	0	0	0	1
§2B1.5	6	3	0	0	0	1	2	§2E5.1	0	0	0	0	0	0	0
§2B1.6 ²	12	12	0	0	0	0	0	§2E5.2	0	0	0	0	0	0	0
§2B2.1	8	3	1	0	0	3	1	§2E5.3	0	0	0	0	0	0	0
§2B2.2	0	0	0	0	0	0	0	§2E5.4	0	0	0	0	0	0	0
§2B2.3	3	3	0	0	0	0	0	§2E5.5	0	0	0	0	0	0	0
§2B3.1	261	93	18	28	0	40	82	§2E5.6	0	0	0	0	0	0	0
§2B3.2	5	0	2	0	0	0	3	§2F1.1	0	0	0	0	0	0	0
§2B3.3	1	1	0	0	0	0	0	§2F1.2	0	0	0	0	0	0	0
§2B4.1	24	1	0	16	0	3	4	§2G1.1	13	6	0	3	0	3	1
§2B5.1	11	10	0	0	0	0	1	§2G1.2	0	0	0	0	0	0	0
§2B5.2	0	0	0	0	0	0	0	§2G1.3	81	49	2	6	0	11	13
§2B5.3	5	3	0	2	0	0	0	§2G2.1	187	73	2	2	0	53	57
§2B5.4	0	0	0	0	0	0	0	§2G2.2	338	128	18	7	0	88	97
§2B6.1	1	0	1	0	0	0	0	§2G2.3	0	0	0	0	0	0	0
§2C1.1	52	5	0	19	0	6	22	§2G2.4	0	0	0	0	0	0	0
§2C1.2	1	1	0	0	0	0	0	§2G2.5	0	0	0	0	0	0	0
§2C1.3	0	0	0	0	0	0	0	§2G2.6	0	0	0	0	0	0	0
§2C1.4	0	0	0	0	0	0	0	§2G3.1	9	3	3	0	0	0	3
§2C1.5	0	0	0	0	0	0	0	§2G3.2	0	0	0	0	0	0	0
§2C1.6	0	0	0	0	0	0	0	§2H1.1	11	2	1	3	0	3	2
§2C1.7	0	0	0	0	0	0	0	§2H1.2	0	0	0	0	0	0	0
§2C1.8	3	2	0	0	0	0	1	§2H1.3	0	0	0	0	0	0	0
§2D1.1	3,419	1,061	68	598	128	580	984	§2H1.4	0	0	0	0	0	0	0
§2D1.2	73	24	3	8	0	19	19	§2H1.5	0	0	0	0	0	0	0
§2D1.3	0	0	0	0	0	0	0	§2H2.1	2	1	0	0	0	0	1
§2D1.4	0	0	0	0	0	0	0	§2H3.1	0	0	0	0	0	0	0
§2D1.5	3	2	0	0	0	1	0	§2H3.2	0	0	0	0	0	0	0
§2D1.6	0	0	0	0	0	0	0	§2H3.3	0	0	0	0	0	0	0
§2D1.7	1	1	0	0	0	0	0	§2H4.1	2	0	0	1	0	0	1

Table 11 (cont.)

Guideline	Within Guideline		Above Guideline	§5K1.1 Substantial Assistance	EDP Below Range	Gov't Below Range	Non-Gov't Below Range	Guideline	Within Guideline		Above Guideline	§5K1.1 Substantial Assistance	EDP Below Range	Gov't Below Range	Non-Gov't Below Range
	Total	Range	Range						Total	Range	Range				
§2H4.2	0	0	0	0	0	0	0	§2M5.2	35	9	0	5	0	7	14
§2J1.1	0	0	0	0	0	0	0	§2M5.3	2	0	1	1	0	0	0
§2J1.2	22	9	1	2	0	3	7	§2M6.1	0	0	0	0	0	0	0
§2J1.3	4	0	0	0	0	0	4	§2M6.2	0	0	0	0	0	0	0
§2J1.4	3	2	1	0	0	0	0	§2N1.1	5	0	0	0	0	3	2
§2J1.5	0	0	0	0	0	0	0	§2N1.2	0	0	0	0	0	0	0
§2J1.6	10	5	2	0	0	0	3	§2N1.3	0	0	0	0	0	0	0
§2J1.7	0	0	0	0	0	0	0	§2N2.1	6	6	0	0	0	0	0
§2J1.8	0	0	0	0	0	0	0	§2N3.1	1	1	0	0	0	0	0
§2J1.9	0	0	0	0	0	0	0	§2P1.1	55	37	3	0	0	8	7
§2K1.1	0	0	0	0	0	0	0	§2P1.2	28	18	0	0	0	5	5
§2K1.2	0	0	0	0	0	0	0	§2P1.3	0	0	0	0	0	0	0
§2K1.3	1	0	0	0	0	0	1	§2P1.4	0	0	0	0	0	0	0
§2K1.4	12	6	2	1	0	2	1	§2Q1.1	0	0	0	0	0	0	0
§2K1.5	0	0	0	0	0	0	0	§2Q1.2	6	3	0	0	0	2	1
§2K1.6	0	0	0	0	0	0	0	§2Q1.3	1	1	0	0	0	0	0
§2K1.7	0	0	0	0	0	0	0	§2Q1.4	0	0	0	0	0	0	0
§2K2.1	1,816	873	120	87	4	202	530	§2Q1.5	0	0	0	0	0	0	0
§2K2.2	0	0	0	0	0	0	0	§2Q1.6	0	0	0	0	0	0	0
§2K2.3	0	0	0	0	0	0	0	§2Q2.1	33	28	0	0	0	2	3
§2K2.4 ³	52	40	9	3	0	0	0	§2Q2.2	0	0	0	0	0	0	0
§2K2.5	2	2	0	0	0	0	0	§2R1.1	2	0	0	1	0	1	0
§2K2.6	0	0	0	0	0	0	0	§2S1.1	276	59	8	72	0	61	76
§2K3.1	0	0	0	0	0	0	0	§2S1.2	0	0	0	0	0	0	0
§2K3.2	0	0	0	0	0	0	0	§2S1.3	48	23	2	2	0	4	17
§2L1.1	667	403	47	23	92	30	72	§2S1.4	0	0	0	0	0	0	0
§2L1.2	5,079	4,198	269	8	225	56	323	§2T1.1	35	7	2	4	0	3	19
§2L1.3	0	0	0	0	0	0	0	§2T1.2	0	0	0	0	0	0	0
§2L2.1	15	9	0	1	0	0	5	§2T1.3	0	0	0	0	0	0	0
§2L2.2	160	141	12	1	0	2	4	§2T1.4	26	4	0	5	0	4	13
§2L2.3	0	0	0	0	0	0	0	§2T1.5	0	0	0	0	0	0	0
§2L2.4	0	0	0	0	0	0	0	§2T1.6	12	3	0	1	0	2	6
§2L2.5	0	0	0	0	0	0	0	§2T1.7	0	0	0	0	0	0	0
§2M1.1	0	0	0	0	0	0	0	§2T1.8	0	0	0	0	0	0	0
§2M2.1	0	0	0	0	0	0	0	§2T1.9	0	0	0	0	0	0	0
§2M2.2	0	0	0	0	0	0	0	§2T2.1	0	0	0	0	0	0	0
§2M2.3	0	0	0	0	0	0	0	§2T2.2	1	1	0	0	0	0	0
§2M2.4	0	0	0	0	0	0	0	§2T3.1	0	0	0	0	0	0	0
§2M3.1	0	0	0	0	0	0	0	§2T3.2	0	0	0	0	0	0	0
§2M3.2	2	1	0	0	0	0	1	§2T4.1	0	0	0	0	0	0	0
§2M3.3	0	0	0	0	0	0	0	§2X1.1	1	0	0	0	0	1	0
§2M3.4	0	0	0	0	0	0	0	§2X2.1	0	0	0	0	0	0	0
§2M3.5	0	0	0	0	0	0	0	§2X3.1	16	8	1	3	0	1	3
§2M3.6	0	0	0	0	0	0	0	§2X4.1	40	19	2	2	1	10	6
§2M3.7	0	0	0	0	0	0	0	§2X5.1	0	0	0	0	0	0	0
§2M3.8	0	0	0	0	0	0	0	§2X5.2	34	34	0	0	0	0	0
§2M3.9	0	0	0	0	0	0	0	§2X6.1	0	0	0	0	0	0	0
§2M4.1	0	0	0	0	0	0	0	§2X7.1	0	0	0	0	0	0	0
§2M5.1	7	1	0	3	0	1	2	§2X7.2	0	0	0	0	0	0	0
								TOTAL	14,803	8,239	673	1,083	451	1,451	2,906

¹ Of the 16,341 cases, 1,538 were excluded due to one or both of the following reasons: information was missing from the submitted documents that prevented the comparison of the sentence and the guideline range (132) or missing guideline applied (1,527). Descriptions of variables used in this table are provided in Appendix A.

² In these cases, the sentenced individual was convicted of violating 18 U.S.C. § 1028A (Aggravated Identity Theft) as the only count or counts of conviction. The *Guidelines Manual* provides punishment for this type of offense under §2B1.6.

³ In these cases, the sentenced individual was convicted of violating 18 U.S.C. § 924(c) (Use of Firearm, Armor-Piercing Ammunition, or Explosives During or in Relation to Certain Crimes) as the only count or counts of conviction. The *Guidelines Manual* provides punishment for this type of offense under §2K2.4.

SOURCE: U.S. Sentencing Commission, Preliminary 2026 Datafile, USSCFY26 (October 1, 2025, through December 31, 2025).

Table 12

TYPE OF PLEA
BY SENTENCE IMPOSED RELATIVE TO THE GUIDELINE RANGE¹
1st Quarter 2026 Preliminary Cumulative Data (October 1, 2025, through December 31, 2025)

	TOTAL CASES	Non-Binding Plea		Binding Plea		Plea without Agreement		Trial		Missing	
		N	%	N	%	N	%	N	%	N	%
TOTAL CASES	9,650	4,414	45.7	1,293	13.4	3,161	32.8	219	2.3	563	5.8
Within Guideline Range	5,886	2,087	35.5	691	11.7	2,509	42.6	105	1.8	494	8.4
Within Range	5,386	1,890	35.1	440	8.2	2,483	46.1	105	1.9	468	8.7
EDP Within Range	500	197	39.4	251	50.2	26	5.2	0	0.0	26	5.2
Above Guideline Range	376	132	35.1	38	10.1	182	48.4	16	4.3	8	2.1
Above Range	375	132	35.2	37	9.9	182	48.5	16	4.3	8	2.1
EDP Above Range	1	0	0.0	1	100.0	0	0.0	0	0.0	0	0.0
§5K1.1 Substantial Assistance	649	570	87.8	44	6.8	28	4.3	1	0.2	6	0.9
§5K1.1 Substantial Assistance Only	256	223	87.1	12	4.7	17	6.6	0	0.0	4	1.6
§5K1.1 Substantial Assistance and EDP	9	5	55.6	3	33.3	1	11.1	0	0.0	0	0.0
§5K1.1 Substantial Assistance and Other Below Range	384	342	89.1	29	7.6	10	2.6	1	0.3	2	0.5
Below Guideline Range	2,739	1,625	59.3	520	19.0	442	16.1	97	3.5	55	2.0
EDP Below Range	158	75	47.5	78	49.4	1	0.6	0	0.0	4	2.5
Government Below Range	863	477	55.3	315	36.5	37	4.3	21	2.4	13	1.5
Non-Government Below Range	1,718	1,073	62.5	127	7.4	404	23.5	76	4.4	38	2.2

¹ This table includes cases in which the court submitted a statement of reasons form with a revision date of November 2025. Descriptions of variables used in this table are provided in Appendix A.

SOURCE: U.S. Sentencing Commission, Preliminary 2026 Datafile, USSCFY26 (October 1, 2025, through December 31, 2025).

Table 13

**EXTENT OF ABOVE GUIDELINE RANGE
BY TYPE OF CRIME¹**

1st Quarter 2026 Preliminary Cumulative Data (October 1, 2025, through December 31, 2025)

TYPE OF CRIME	N	Mean			Median		
		Sentence In Months	Increase In Months	Percent Increase	Sentence In Months	Increase In Months	Percent Increase
TOTAL	672	64	19	65.9	40	9	40.2
Administration of Justice	8	26	12	138.1	28	12	100.3
Antitrust	0	--	--	--	--	--	--
Arson	2	--	--	--	--	--	--
Assault	15	105	31	57.0	84	15	26.3
Bribery/Corruption	0	--	--	--	--	--	--
Burglary/Trespass	1	--	--	--	--	--	--
Child Pornography	18	200	53	37.2	210	44	26.2
Commercialized Vice	0	--	--	--	--	--	--
Drug Possession	0	--	--	--	--	--	--
Drug Trafficking	72	123	28	57.5	98	17	24.7
Environmental	0	--	--	--	--	--	--
Extortion/Racketeering	2	--	--	--	--	--	--
Firearms	130	82	25	57.7	72	20	37.4
Food and Drug	0	--	--	--	--	--	--
Forgery/Counter/Copyright	0	--	--	--	--	--	--
Fraud/Theft/Embezzlement	27	54	19	148.5	48	12	67.5
Immigration	331	21	7	62.5	12	4	50.0
Individual Rights	1	--	--	--	--	--	--
Kidnapping	0	--	--	--	--	--	--
Manslaughter	6	109	28	40.0	80	18	31.1
Money Laundering	9	65	30	138.3	60	20	56.5
Murder	4	363	90	35.9	353	60	20.7
National Defense	1	--	--	--	--	--	--
Obscenity/Other Sex Offenses	8	66	31	138.8	54	20	79.9
Prison Offenses	3	35	9	34.4	33	6	33.3
Robbery	19	181	43	32.8	180	30	25.0
Sexual Abuse	6	192	54	55.0	162	55	32.6
Stalking/Harassing	6	72	30	101.7	61	20	49.4
Tax	2	--	--	--	--	--	--
Other	1	--	--	--	--	--	--

¹ Of the 16,341 cases, in 684 the sentenced individual received an Above Guideline Range sentence. Due to an inability to calculate the extent of departure for cases with a sentence of life, three cases were excluded from this table. Also, nine cases were excluded due to several logical criteria. Sentences greater than 470 months and probation were included in the sentence average computations as 470 months and zero months, respectively. The information in this table includes conditions of confinement as described in USSG §5C1.1. Descriptions of variables used in this table are provided in Appendix A.

Table 14

**EXTENT OF §5K1.1 SUBSTANTIAL ASSISTANCE
BY TYPE OF CRIME¹**

1st Quarter 2026 Preliminary Cumulative Data (October 1, 2025, through December 31, 2025)

TYPE OF CRIME	N	Mean			Median		
		Sentence In Months	Decrease In Months	Percent Decrease	Sentence In Months	Decrease In Months	Percent Decrease
TOTAL	1,067	54	51	53.6	36	35	49.6
Administration of Justice	4	3	13	85.6	0	13	99.8
Antitrust	1	--	--	--	--	--	--
Arson	1	--	--	--	--	--	--
Assault	5	59	122	58.8	72	108	57.1
Bribery/Corruption	35	13	33	71.7	8	24	78.4
Burglary/Trespass	0	--	--	--	--	--	--
Child Pornography	7	51	55	50.2	36	42	53.9
Commercialized Vice	3	4	7	77.6	0	6	99.5
Drug Possession	0	--	--	--	--	--	--
Drug Trafficking	599	69	63	49.7	57	48	46.0
Environmental	0	--	--	--	--	--	--
Extortion/Racketeering	1	--	--	--	--	--	--
Firearms	92	32	30	53.1	24	22	49.9
Food and Drug	0	--	--	--	--	--	--
Forgery/Counter/Copyright	2	--	--	--	--	--	--
Fraud/Theft/Embezzlement	140	20	27	63.9	12	18	62.2
Immigration	33	15	15	48.3	12	9	50.0
Individual Rights	4	57	28	33.5	60	24	36.4
Kidnapping	2	--	--	--	--	--	--
Manslaughter	0	--	--	--	--	--	--
Money Laundering	72	47	50	54.4	30	30	48.0
Murder	8	141	76	47.0	132	69	47.0
National Defense	9	27	30	67.8	12	25	67.5
Obscenity/Other Sex Offenses	0	--	--	--	--	--	--
Prison Offenses	0	--	--	--	--	--	--
Robbery	27	74	80	57.5	76	61	51.9
Sexual Abuse	10	104	61	37.8	78	50	35.7
Stalking/Harassing	2	--	--	--	--	--	--
Tax	10	12	19	76.5	3	17	93.4
Other	0	--	--	--	--	--	--

¹ Of the 16,341 cases, in 1,086 the sentenced individual received a §5K1.1 Substantial Assistance sentence. Of these, 19 cases were excluded due to several logical criteria. Sentences greater than 470 months and probation were included in the sentence average computations as 470 months and zero months, respectively. The information in this table includes conditions of confinement as described in USSG §5C1.1. Descriptions of variables used in this table are provided in Appendix A.

Table 15

**EXTENT OF EDP BELOW RANGE
BY TYPE OF CRIME¹**

1st Quarter 2026 Preliminary Cumulative Data (October 1, 2025, through December 31, 2025)

TYPE OF CRIME	N	Mean			Median		
		Sentence In Months	Decrease In Months	Percent Decrease	Sentence In Months	Decrease In Months	Percent Decrease
TOTAL	460	12	12	48.4	9	6	42.2
Administration of Justice	1	--	--	--	--	--	--
Antitrust	0	--	--	--	--	--	--
Arson	0	--	--	--	--	--	--
Assault	0	--	--	--	--	--	--
Bribery/Corruption	0	--	--	--	--	--	--
Burglary/Trespass	0	--	--	--	--	--	--
Child Pornography	0	--	--	--	--	--	--
Commercialized Vice	0	--	--	--	--	--	--
Drug Possession	0	--	--	--	--	--	--
Drug Trafficking	128	17	26	54.4	18	18	52.9
Environmental	0	--	--	--	--	--	--
Extortion/Racketeering	0	--	--	--	--	--	--
Firearms	4	16	12	47.1	17	10	34.7
Food and Drug	0	--	--	--	--	--	--
Forgery/Counter/Copyright	0	--	--	--	--	--	--
Fraud/Theft/Embezzlement	0	--	--	--	--	--	--
Immigration	326	9	6	46.0	6	5	40.0
Individual Rights	0	--	--	--	--	--	--
Kidnapping	0	--	--	--	--	--	--
Manslaughter	0	--	--	--	--	--	--
Money Laundering	0	--	--	--	--	--	--
Murder	0	--	--	--	--	--	--
National Defense	0	--	--	--	--	--	--
Obscenity/Other Sex Offenses	0	--	--	--	--	--	--
Prison Offenses	0	--	--	--	--	--	--
Robbery	0	--	--	--	--	--	--
Sexual Abuse	1	--	--	--	--	--	--
Stalking/Harassing	0	--	--	--	--	--	--
Tax	0	--	--	--	--	--	--
Other	0	--	--	--	--	--	--

¹ Of the 16,341 cases, in 460 the sentenced individual received an EDP Below Range sentence. Sentences greater than 470 months and probation were included in the sentence average computations as 470 months and zero months, respectively. The information in this table includes conditions of confinement as described in USSG §5C1.1. Descriptions of variables used in this table are provided in Appendix A.

SOURCE: U.S. Sentencing Commission, Preliminary 2026 Datafile, USSCFY26 (October 1, 2025, through December 31, 2025).

Table 16

**EXTENT OF GOVERNMENT BELOW RANGE
BY TYPE OF CRIME¹**

1st Quarter 2026 Preliminary Cumulative Data (October 1, 2025, through December 31, 2025)

TYPE OF CRIME	N	Mean			Median		
		Sentence In Months	Decrease In Months	Percent Decrease	Sentence In Months	Decrease In Months	Percent Decrease
TOTAL	1,434	58	37	47.6	36	22	41.2
Administration of Justice	25	2	11	83.2	0	10	99.7
Antitrust	1	--	--	--	--	--	--
Arson	2	--	--	--	--	--	--
Assault	25	32	17	49.0	21	8	36.4
Bribery/Corruption	9	10	19	68.1	9	12	55.4
Burglary/Trespass	3	19	14	53.2	16	14	46.7
Child Pornography	85	77	65	46.8	66	61	42.9
Commercialized Vice	1	--	--	--	--	--	--
Drug Possession	0	--	--	--	--	--	--
Drug Trafficking	586	77	49	42.4	60	37	36.4
Environmental	6	1	13	93.3	0	10	100.0
Extortion/Racketeering	0	--	--	--	--	--	--
Firearms	210	42	23	45.1	30	17	36.3
Food and Drug	3	14	22	63.5	12	21	63.6
Forgery/Counter/Copyright	0	--	--	--	--	--	--
Fraud/Theft/Embezzlement	157	18	18	62.3	10	12	59.8
Immigration	104	11	11	53.1	8	6	46.7
Individual Rights	2	--	--	--	--	--	--
Kidnapping	2	--	--	--	--	--	--
Manslaughter	2	--	--	--	--	--	--
Money Laundering	60	61	44	50.1	40	22	36.1
Murder	4	158	50	29.8	162	52	27.8
National Defense	9	29	28	52.1	18	22	51.4
Obscenity/Other Sex Offenses	7	7	12	72.5	0	12	97.0
Prison Offenses	15	9	7	45.1	7	4	33.8
Robbery	40	100	45	32.2	75	33	25.0
Sexual Abuse	54	142	74	35.2	145	58	33.3
Stalking/Harassing	12	13	9	57.9	8	8	49.9
Tax	9	11	19	66.8	12	12	66.7
Other	1	--	--	--	--	--	--

¹ Of the 16,341 cases, in 1,498 the sentenced individual received a Government Below Range sentence. Due to an inability to calculate the extent of departure for cases with a guideline minimum of life, 35 cases were excluded from this table. Also, 29 cases were excluded due to several logical criteria. Sentences greater than 470 months and probation were included in the sentence average computations as 470 months and zero months, respectively. The information in this table includes conditions of confinement as described in USSG §5C1.1. Descriptions of variables used in this table are provided in Appendix A.

Table 17

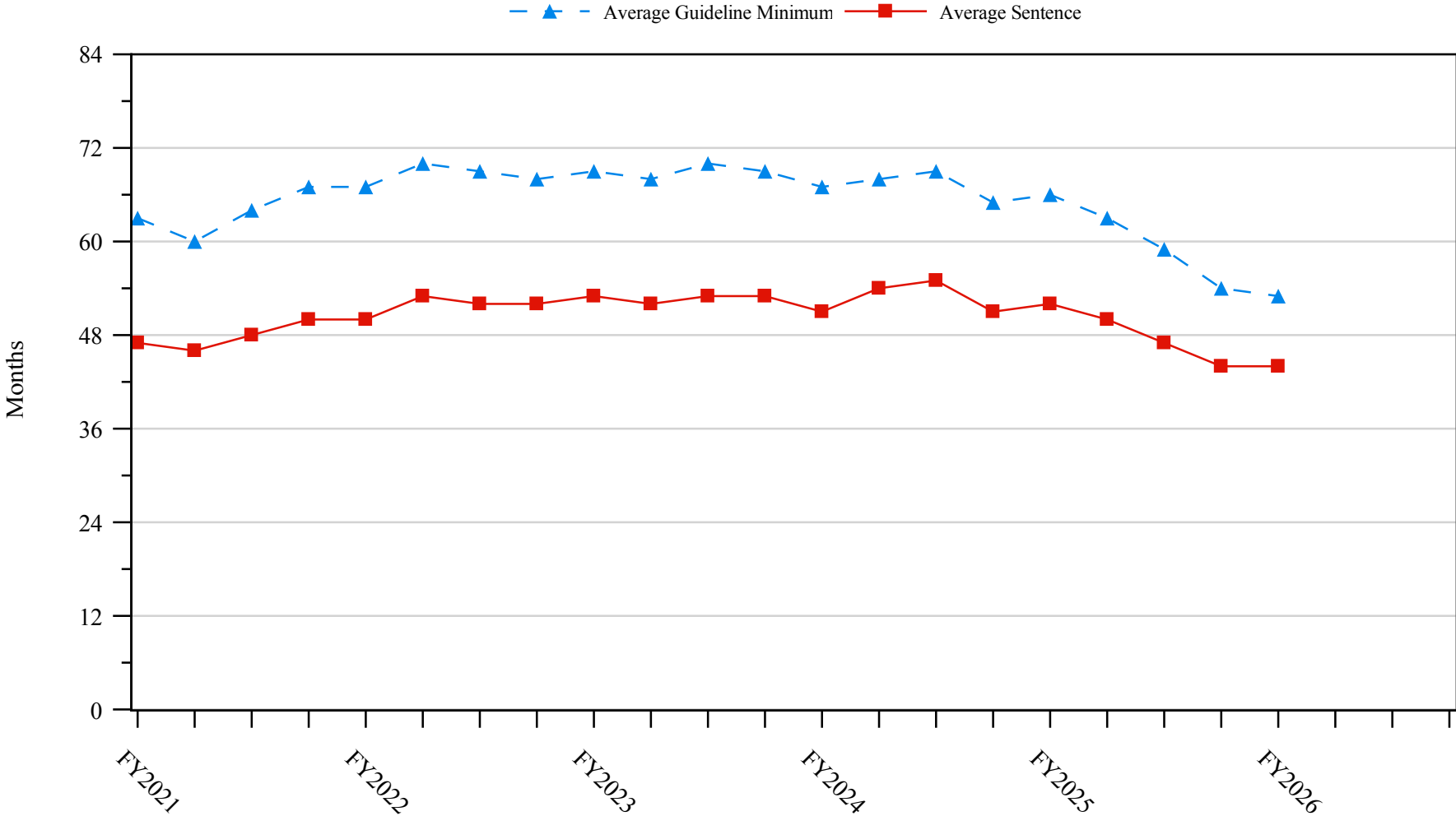
**EXTENT OF NON-GOVERNMENT BELOW RANGE
BY TYPE OF CRIME¹**

1st Quarter 2026 Preliminary Cumulative Data (October 1, 2025, through December 31, 2025)

TYPE OF CRIME	N	Mean			Median		
		Sentence In Months	Decrease In Months	Percent Decrease	Sentence In Months	Decrease In Months	Percent Decrease
TOTAL	2,845	52	24	41.9	25	13	33.3
Administration of Justice	42	6	9	70.6	3	8	84.4
Antitrust	0	--	--	--	--	--	--
Arson	1	--	--	--	--	--	--
Assault	43	60	26	37.5	30	13	33.3
Bribery/Corruption	25	21	21	61.4	9	18	59.9
Burglary/Trespass	1	--	--	--	--	--	--
Child Pornography	92	90	42	33.7	84	34	28.5
Commercialized Vice	5	12	14	75.0	3	12	80.0
Drug Possession	0	--	--	--	--	--	--
Drug Trafficking	990	86	37	34.3	72	22	27.2
Environmental	4	2	5	73.1	1	5	83.3
Extortion/Racketeering	9	15	17	39.1	13	6	27.0
Firearms	530	33	17	41.7	24	12	32.8
Food and Drug	2	--	--	--	--	--	--
Forgery/Counter/Copyright	1	--	--	--	--	--	--
Fraud/Theft/Embezzlement	334	19	15	56.6	12	10	49.8
Immigration	421	11	8	44.9	8	6	37.5
Individual Rights	4	42	8	35.2	40	6	18.2
Kidnapping	2	--	--	--	--	--	--
Manslaughter	4	21	23	62.8	12	29	65.5
Money Laundering	89	41	32	51.1	18	18	47.8
Murder	6	145	42	22.4	126	24	9.2
National Defense	17	25	17	44.6	30	16	34.8
Obscenity/Other Sex Offenses	27	10	9	47.7	10	7	42.6
Prison Offenses	11	7	11	62.2	6	6	75.0
Robbery	79	87	27	26.6	90	18	19.8
Sexual Abuse	46	197	70	29.4	208	60	29.2
Stalking/Harassing	18	19	9	39.0	17	6	26.8
Tax	38	13	12	60.3	10	12	51.7
Other	4	0	8	99.9	0	9	100.0

¹ Of the 16,341 cases, in 2,933 the sentenced individual received a Non-Government Below Range sentence. Due to an inability to calculate the extent of departure for cases with a guideline minimum of life, 38 cases were excluded from this table. Also, 50 cases were excluded due to several logical criteria. Sentences greater than 470 months and probation were included in the sentence average computations as 470 months and zero months, respectively. The information in this table includes conditions of confinement as described in USSG §5C1.1. Descriptions of variables used in this table are provided in Appendix A.

Figure 3
SENTENCE LENGTH AND GUIDELINE MINIMUM QUARTERLY DATA
FOR SENTENCED INDIVIDUALS¹
Fiscal Years 2021 - 2025,
1st Quarter 2026 Preliminary Cumulative Data (October 1, 2025, through December 31, 2025)

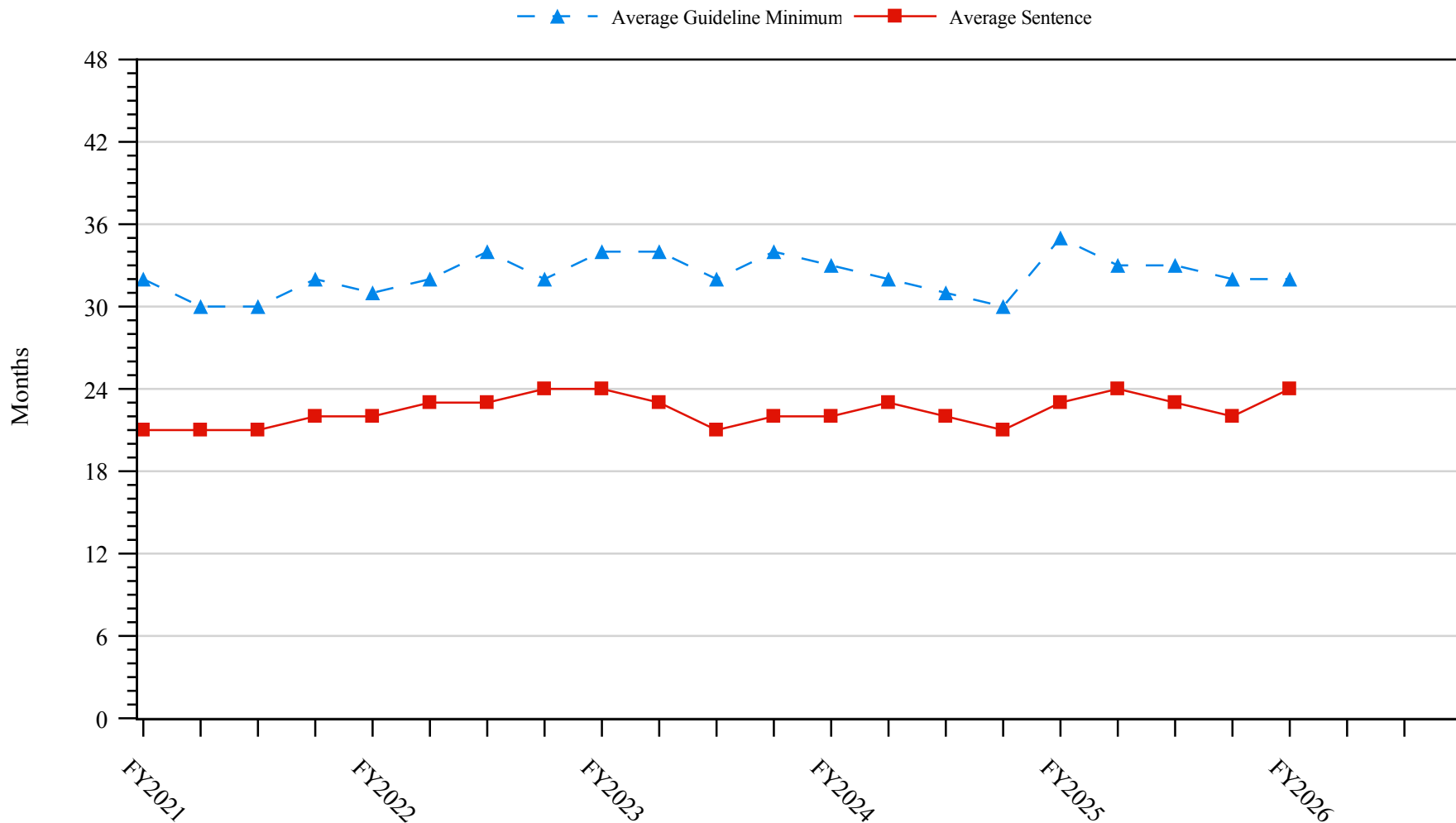


¹ Cases with guideline minimums of life or probation were included in the guideline minimum average computations as 470 months and zero months, respectively. Cases with sentences of 470 months or greater (including life) or probation were included in the sentence average computations as 470 months and zero months, respectively. The information presented in this figure includes conditions of confinement as described in USSG §5C1.1. Guideline minimums account for applicable statutory mandatory penalties. Descriptions of variables used in this figure are provided in Appendix A.

SOURCE: U.S. Sentencing Commission, 2021 - 2025 Datafiles, USSCFY21 - USSCFY25, and Preliminary Data from USSCFY26 (October 1, 2025, through December 31, 2025).

Figure 4

**SENTENCE LENGTH AND GUIDELINE MINIMUM QUARTERLY DATA
FOR INDIVIDUALS SENTENCED UNDER §2B1.1 (THEFT, PROPERTY DESTRUCTION, AND FRAUD)¹
Fiscal Years 2021 - 2025,
1st Quarter 2026 Preliminary Cumulative Data (October 1, 2025, through December 31, 2025)**

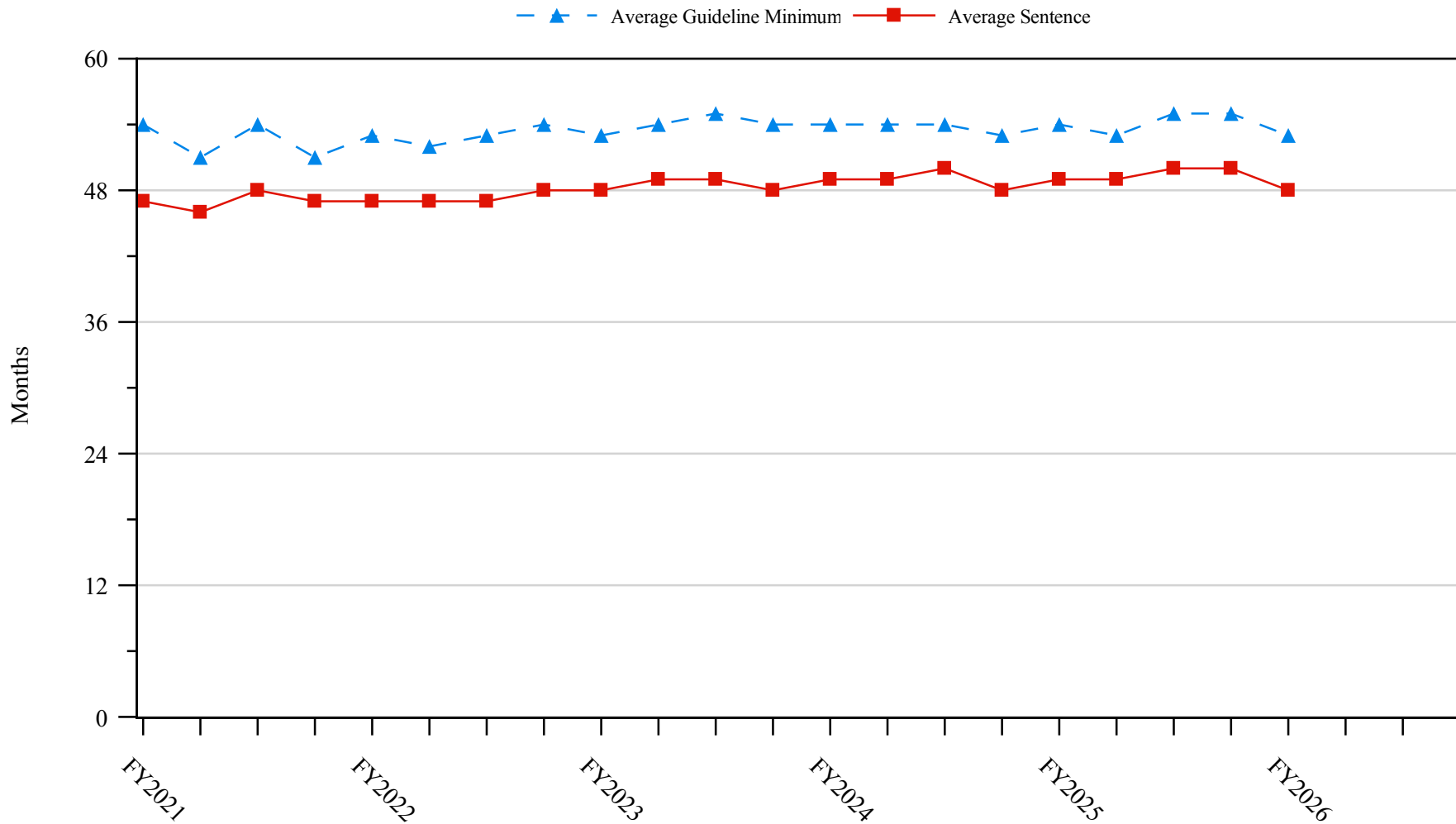


¹ Figure includes only cases with a primary sentencing guideline of USSG §2B1.1 (Larceny, Embezzlement, and Other Forms of Theft; Offenses Involving Stolen Property; Property Damage or Destruction; Fraud and Deceit; Forgery; Offenses Involving Altered or Counterfeit Instruments Other than Counterfeit Bearer Obligations of the United States). Additionally, cases with an amendment year prior to 2001 were excluded from this figure because prior to this time fraud cases were reported separately as USSG §2F1.1. Cases with guideline minimums of life or probation were included in the guideline minimum average computations as 470 months and zero months, respectively. Cases with sentences of 470 months or greater (including life) or probation were included in the sentence average computations as 470 months and zero months, respectively. The information presented in this figure includes conditions of confinement as described in USSG §5C1.1. Guideline minimums account for applicable statutory mandatory penalties. Descriptions of variables used in this figure are provided in Appendix A.

SOURCE: U.S. Sentencing Commission, 2021 - 2025 Datafiles, USSCFY21 - USSCFY25, and Preliminary Data from USSCFY26 (October 1, 2025, through December 31, 2025).

Figure 5

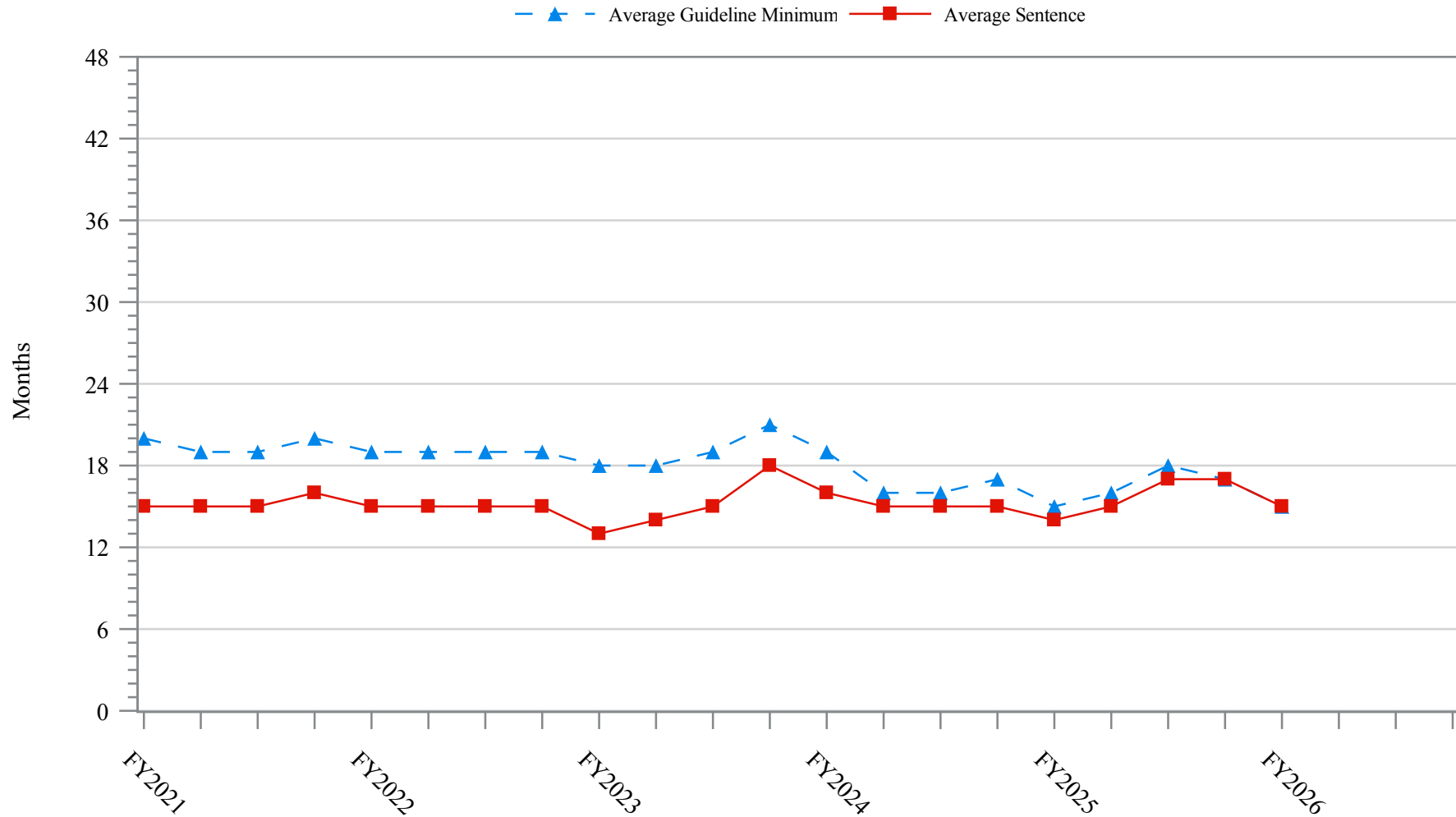
**SENTENCE LENGTH AND GUIDELINE MINIMUM QUARTERLY DATA
FOR INDIVIDUALS SENTENCED UNDER §2K2.1 (UNLAWFUL POSSESSION OF OR TRANSACTION IN FIREARMS)¹
Fiscal Years 2021 - 2025,
1st Quarter 2026 Preliminary Cumulative Data (October 1, 2025, through December 31, 2025)**



¹ Figure includes only cases with a primary sentencing guideline of USSG §2K2.1 (Unlawful Receipt, Possession, or Transportation of Firearms or Ammunition; Prohibited Transactions Involving Firearms or Ammunition). Cases with guideline minimums of life or probation were included in the guideline minimum average computations as 470 months and zero months, respectively. Cases with sentences of 470 months or greater (including life) or probation were included in the sentence average computations as 470 months and zero months, respectively. The information presented in this figure includes conditions of confinement as described in USSG §5C1.1. Guideline minimums account for applicable statutory mandatory penalties. Descriptions of variables used in this figure are provided in Appendix A.

SOURCE: U.S. Sentencing Commission, 2021 - 2025 Datafiles, USSCFY21 - USSCFY25, and Preliminary Data from USSCFY26 (October 1, 2025, through December 31, 2025).

Figure 6
SENTENCE LENGTH AND GUIDELINE MINIMUM QUARTERLY DATA
FOR INDIVIDUALS SENTENCED UNDER §2L1.1 (ALIEN SMUGGLING)¹
Fiscal Years 2021 - 2025,
1st Quarter 2026 Preliminary Cumulative Data (October 1, 2025, through December 31, 2025)

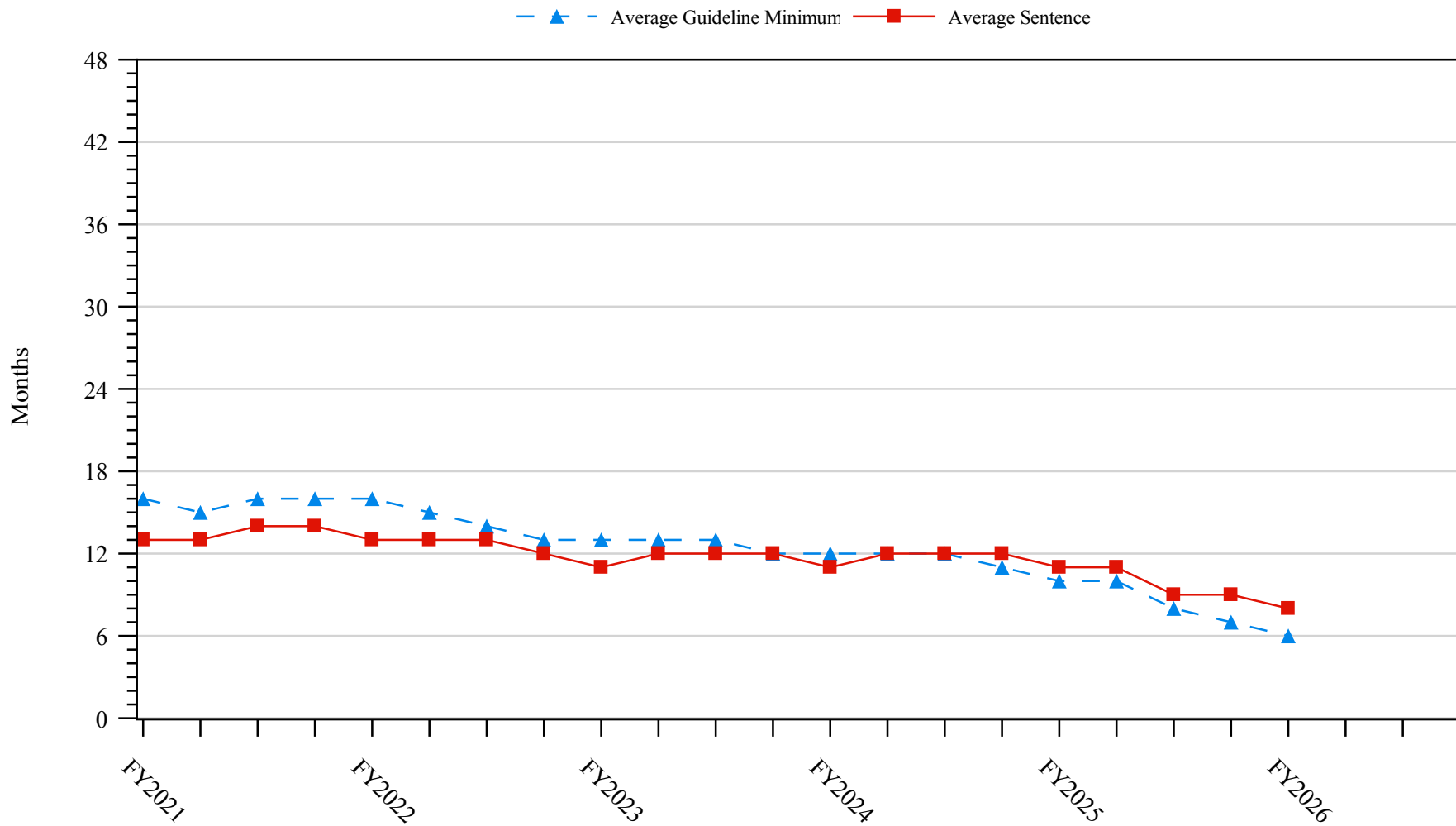


¹ Figure includes only cases with a primary sentencing guideline of USSG §2L1.1 (Smuggling, Transporting, or Harboring an Unlawful Alien). Cases with guideline minimums of life or probation were included in the guideline minimum average computations as 470 months and zero months, respectively. Cases with sentences of 470 months or greater (including life) or probation were included in the sentence average computations as 470 months and zero months, respectively. The information presented in this figure includes conditions of confinement as described in USSG §5C1.1. Guideline minimums account for applicable statutory mandatory penalties. Descriptions of variables used in this figure are provided in Appendix A.

SOURCE: U.S. Sentencing Commission, 2021 - 2025 Datafiles, USSCFY21 - USSCFY25, and Preliminary Data from USSCFY26 (October 1, 2025, through December 31, 2025).

Figure 7

**SENTENCE LENGTH AND GUIDELINE MINIMUM QUARTERLY DATA
FOR INDIVIDUALS SENTENCED UNDER §2L1.2 (UNLAWFUL ENTERING OR REMAINING IN THE UNITED STATES)¹
Fiscal Years 2021 - 2025,
1st Quarter 2026 Preliminary Cumulative Data (October 1, 2025, through December 31, 2025)**

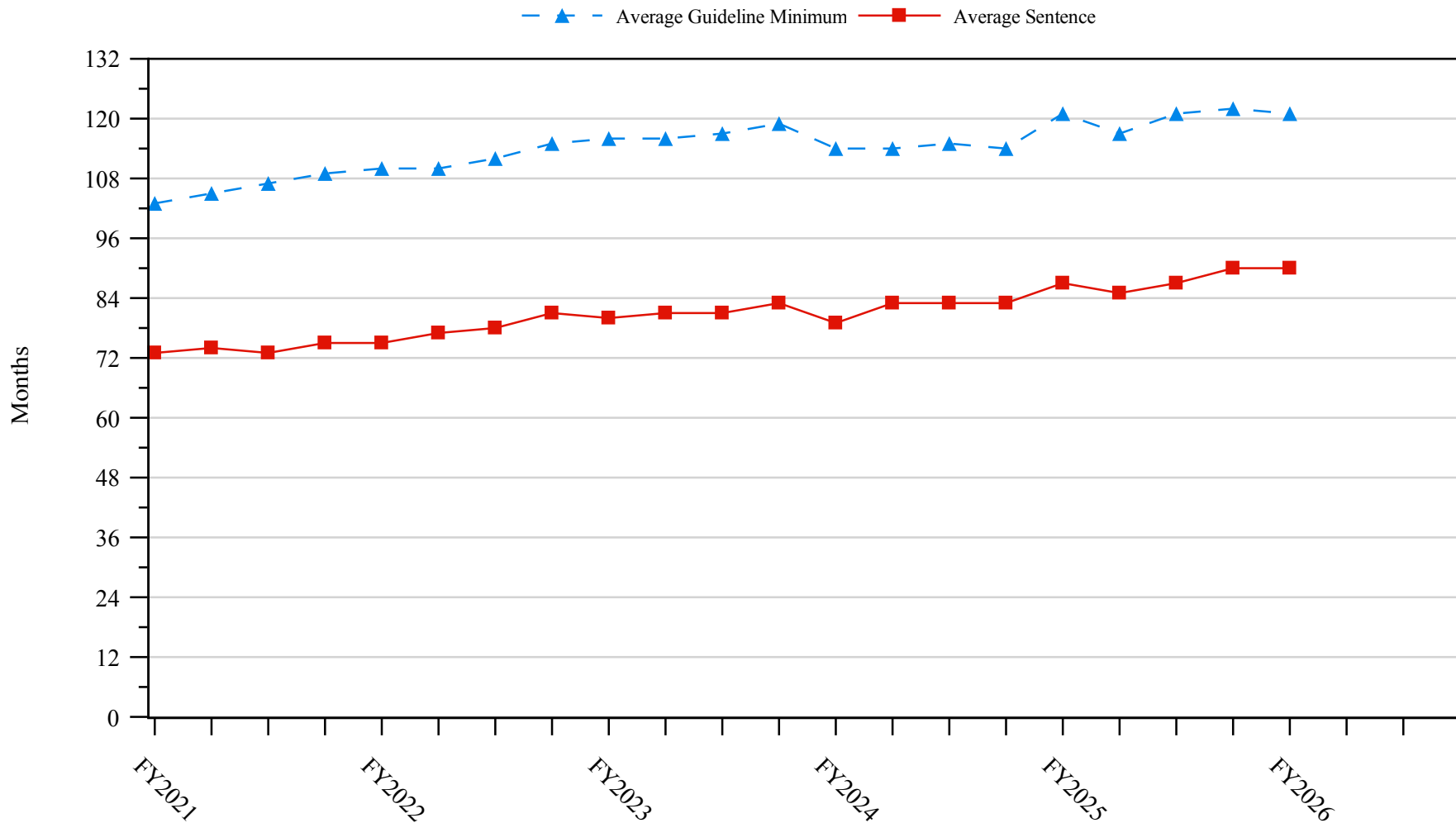


¹ Figure includes only cases with a primary sentencing guideline of USSG §2L1.2 (Unlawful Entering or Remaining in the United States). Cases with guideline minimums of life or probation were included in the guideline minimum average computations as 470 months and zero months, respectively. Cases with sentences of 470 months or greater (including life) or probation were included in the sentence average computations as 470 months and zero months, respectively. The information presented in this figure includes conditions of confinement as described in USSG §5C1.1. Guideline minimums account for applicable statutory mandatory penalties. Descriptions of variables used in this figure are provided in Appendix A.

SOURCE: U.S. Sentencing Commission, 2021 - 2025 Datafiles, USSCFY21 - USSCFY25, and Preliminary Data from USSCFY26 (October 1, 2025, through December 31, 2025).

Figure 8

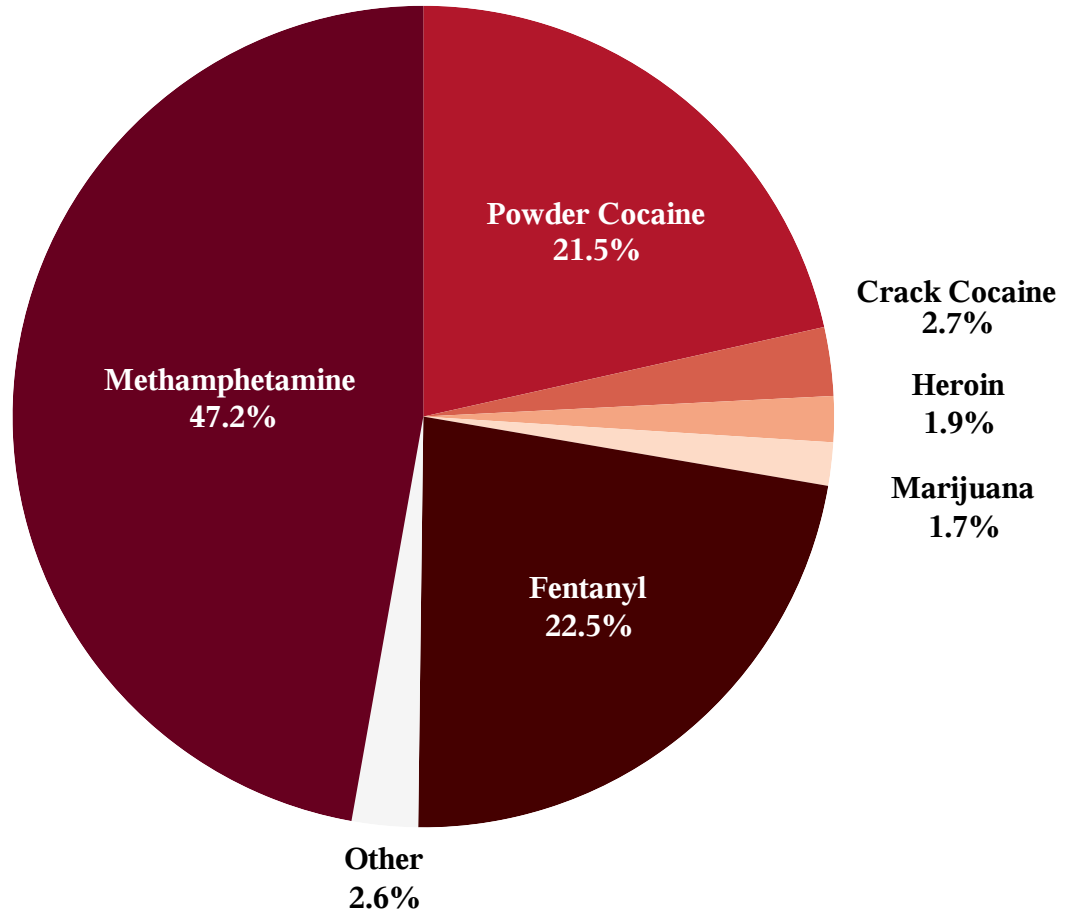
**SENTENCE LENGTH AND GUIDELINE MINIMUM QUARTERLY DATA
FOR INDIVIDUALS SENTENCED UNDER §2D1.1 (UNLAWFUL DRUG TRAFFICKING OR MANUFACTURING)¹
Fiscal Years 2021 - 2025,
1st Quarter 2026 Preliminary Cumulative Data (October 1, 2025, through December 31, 2025)**



¹ Figure includes only cases with a primary sentencing guideline of USSG §2D1.1 (Unlawful Manufacturing, Importing, Exporting, or Trafficking (Including Possession with Intent to Commit These Offenses); Attempt or Conspiracy). Cases with guideline minimums of life or probation were included in the guideline minimum average computations as 470 months and zero months, respectively. Cases with sentences of 470 months or greater (including life) or probation were included in the sentence average computations as 470 months and zero months, respectively. The information presented in this figure includes conditions of confinement as described in USSG §5C1.1. Guideline minimums account for applicable statutory mandatory penalties. Descriptions of variables used in this figure are provided in Appendix A.

SOURCE: U.S. Sentencing Commission, 2021 - 2025 Datafiles, USSCFY21 - USSCFY25, and Preliminary Data from USSCFY26 (October 1, 2025, through December 31, 2025).

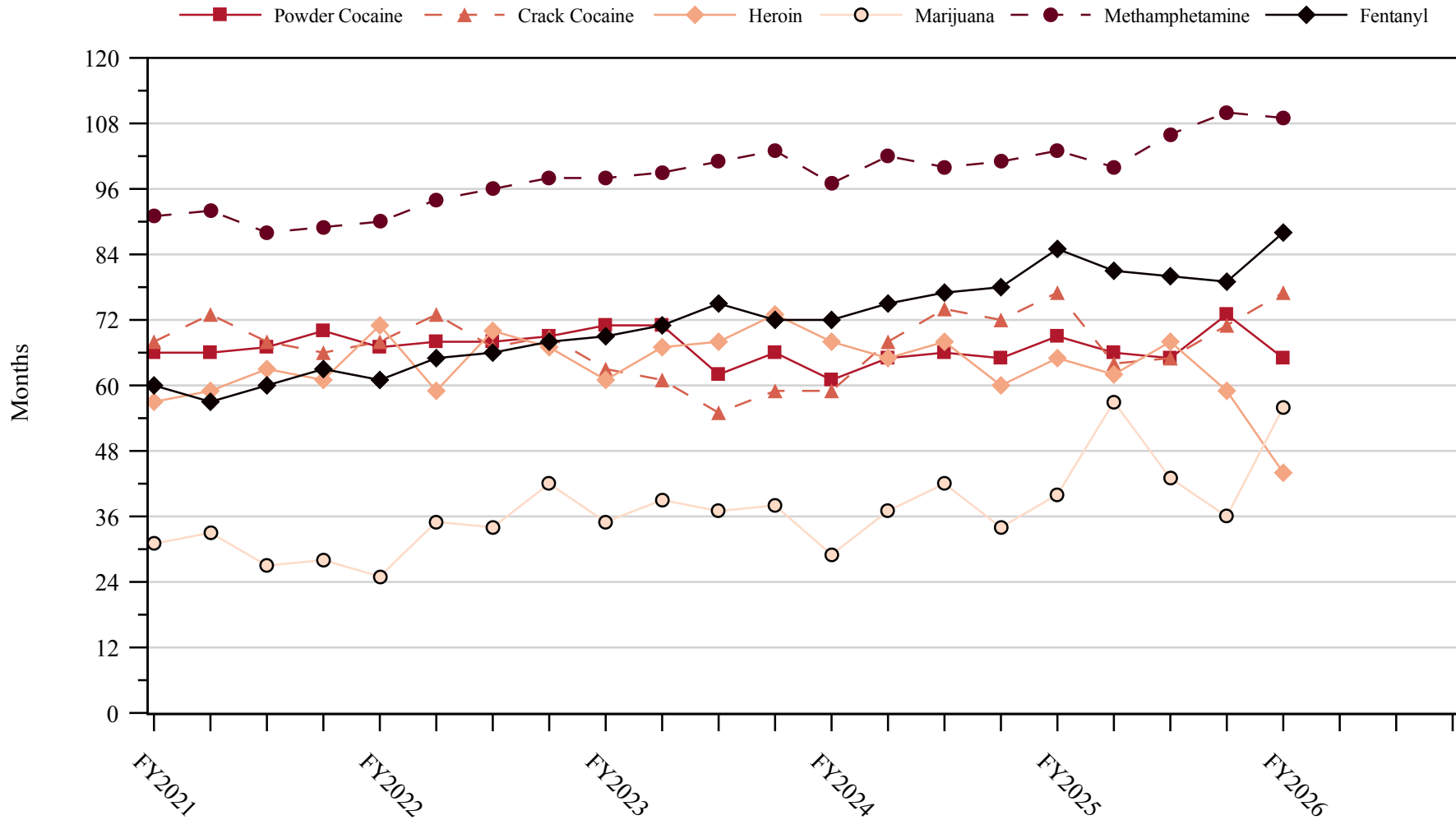
Figure 9
DISTRIBUTION OF PRIMARY DRUG TYPE
IN FEDERAL DRUG CASES¹
1st Quarter 2026 Preliminary Cumulative Data
(October 1, 2025, through December 31, 2025)



¹ Of the 16,341 cases, in 3,521 the individual was sentenced under USSG Chapter Two, Part D (Drugs). The 'Fentanyl' category includes both Fentanyl (N-phenyl-N-[1-(2-phenylethyl)-4-piperidinyl] Propanamide) and Fentanyl Analogue. Descriptions of variables used in this figure are provided in Appendix A.

SOURCE: U.S. Sentencing Commission, Preliminary 2026 Datafile, USSCFY26 (October 1, 2025, through December 31, 2025).

Figure 10
SENTENCE LENGTH QUARTERLY DATA IN DRUG TRAFFICKING CASES
BY MAJOR DRUG TYPE¹
Fiscal Years 2021 - 2025,
1st Quarter 2026 Preliminary Cumulative Data (October 1, 2025, through December 31, 2025)



¹ Only individuals sentenced under §§2D1.1 (Drug Trafficking), 2D1.2 (Protected Locations), 2D1.5 (Continuing Criminal Enterprise), 2D1.6 (Use of a Communication Facility), 2D1.8 (Rent/Manage Drug Establishment), 2D1.10 (Endangering Human Life While Manufacturing), or 2D1.14 (Narco-Terrorism) are depicted in this figure. Sentences of 470 months or greater (including life) and probation were included in the sentence average computations as 470 months and zero months, respectively. The information in this figure includes conditions of confinement as described in USSG §5C1.1. Cases missing drug type or sentencing information were also excluded. Descriptions of variables used in this figure are provided in Appendix A.

SOURCE: U.S. Sentencing Commission, 2021 - 2025 Datafiles, USSCFY21 - USSCFY25, and Preliminary Data from USSCFY26 (October 1, 2025, through December 31, 2025).

Appendix A

Descriptions of Datafiles and Variables

Introduction

The Commission collects and analyzes data on federal sentences to support its various activities. As authorized by Congress, the Commission's numerous research responsibilities include (1) the establishment of a research and development program to serve as a clearinghouse and information center for the collection, preparation, and dissemination of information on federal sentencing practices; (2) the publication of data concerning the sentencing process; (3) the systematic collection and dissemination of information concerning sentences actually imposed and the relationship of such sentences to the factors set forth in section 3553(a) of title 18, United States Code; and (4) the systematic collection and dissemination of information regarding the effectiveness of sentences imposed.¹

The Commission maintains a comprehensive, computerized data collection system which forms the basis for its clearinghouse of federal sentencing information and which contributes to the agency's research mission.

Pursuant to 28 U.S.C. § 994(w), the chief judge of each district is required to ensure that within 30 days of entry of judgment in a criminal case, the sentencing court submits a report of sentence to the Commission that includes (1) the judgment and commitment order; (2) the written statement of reasons; (3) any plea agreement; (4) the indictment or other charging document; (5) the presentence report; and (6) any other information the Commission requests. Information on minor and petty offenses are not reported to the Commission as the sentencing guidelines do not apply in those cases.² Cases in which a sentence of death was imposed also are not available in this dataset for this same reason.³

Standard information on each case is extracted from sentencing documents received and computerized for analysis. Note that for all tables, total percentages may not add up to exactly 100 percent due to rounding.

Variables

The following section describes the variables used in this report.

Above Guideline Range

Above Guideline Range are cases in which the sentence imposed was above the applicable guideline range.

Below Guideline Range

Below Guideline Range are cases in which the sentence imposed was below the applicable guideline range and for which the court cited a reason on Part VI of the Statement of Reasons other than §5K1.1 or gave no reason for the sentence. This category includes sentences that result from government motions as

¹ 28 U.S.C. §§ 995(a)(12) and (14) – (16).

² See U.S. SENTENCING COMM'N, *Guidelines Manual*, §1B1.9 (Nov. 2025).

³ See 18 U.S.C. §§ 3591-99 for the sentencing procedures that apply in death penalty cases.

well as from motions by the defendant.

Circuit

Information on judicial *Circuit* is generated using the location of the judicial district in which the person was sentenced.

Citizenship Status

Information on the *Citizenship Status* of sentenced individuals is obtained from the Presentence Report. Persons are categorized as one of the following: “U.S. citizen,” “resident alien,” “illegal alien,” “extradited alien,” or “non-U.S. citizen, alien status unknown.” The latter four categories are collapsed into the category of “non-U.S. citizen.”

District

Information on the judicial *District* in which sentencing occurred is obtained from the Judgment and Commitment Order.

EDP Above Range

EDP Above Range are those *Above Guideline Range* cases in which the court applied the adjustment at §3F1.1 for participation in an Early Disposition Program.

EDP Below Range

EDP Below Range are those *Below Guideline Range* cases in which the court applied the adjustment at §3F1.1 for participation in an Early Disposition Program.

EDP Within Range

EDP Within Range are those *Within Guideline Range* cases in which court applied the adjustment at §3F1.1 for participation in an Early Disposition Program.

Extent of Decrease

Extent of Decrease is calculated based on the difference between the sentence length (including any months of alternative confinement as defined in USSG §5C1.1) and the guideline minimum (including any statutory trumps) for below range cases. Life imprisonment sentences and cases where the guideline minimum is zero months or life are excluded from all extent of decrease calculations due to the logical difficulty in calculating a decrease from these values. High values of the sentence are capped at 470 months for analytical purposes.

Extent of Increase

Extent of Increase is calculated based on the difference between the guideline maximum (including any statutory trumps) and the sentence length (including any months of alternative confinement as defined in USSG §5C1.1) for above range cases. Life sentences and cases where the guideline minimum is life are excluded from all extent of increase calculations due to the logical difficulty in calculating an increase from these values. High values of the sentence are capped at 470 months for analytical purposes.

Gender

Gender is obtained from the Presentence Report.

Government Below Range

Government Below Range are those *Below Guideline Range* cases in which the government sought a sentence below the guideline range and the court did not apply the adjustment at §3F1.1.

Guideline Sentencing Range

The *Guideline Sentencing Range* is taken from the Statement of Reasons provided by the sentencing court. Alternatively, if the Statement of Reasons is missing, then the information is taken from the Presentence Report.

For tables in this report, unless otherwise indicated, the guideline sentencing range does not take into account applicable statutory restrictions on either the maximum or the minimum of the range; therefore, it may differ from the available range, which does take into account the statutory restrictions.

Non-Government Below Range

Non-Government Below Range are those *Below Guideline Range* cases in which the government did not seek a sentence below the guideline range and the court did not apply the adjustment at §3F1.1.

Primary Drug Type

Information on *Primary Drug Type* is obtained from the Presentence Report, Judgment and Commitment Order, or Plea Agreement. It is recorded only if at least one of the statutes of conviction recorded by the Commission is an offense under title 21 of the United States Code or an offense under another title when the underlying conduct involves a controlled substance. Information about type of drug in the text and tables is derived from the primary drug type (i.e., the type that produces the highest base offense level).

The category *Fentanyl* includes cases in which the drug involved is Fentanyl (N-phenyl-N-[1-(2-phenylethyl)-4-piperidinyl] Propanamide) and cases in which the court determined the substance involved to be a Fentanyl Analogue, as defined in the *Guidelines Manual*. The category *Marijuana* includes Hashish and Hashish oil. The category *Methamphetamine* includes pure (actual) methamphetamine, “Ice,” methamphetamine mixture, and methamphetamine precursors sentenced under any drug trafficking guideline other than USSG §2D1.11 (for example ephedrine and pseudoephedrine). All drug types not listed separately in this report are collapsed into the “Other” drug category.

Primary Guideline

When more than one sentencing guideline is applied in a case, the *Primary Guideline* is the guideline that has the highest adjusted offense level (this includes the Base Offense Level, all applicable Specific Offense Characteristics, and Chapter Three Adjustments prior to the application of Multiple Count Units).

Race

Information on *Race* is obtained from the Presentence Report in separate categories of race and ethnicity (*White, Black, Native American or Alaskan Native, Asian or Pacific Islander, Multiracial, and “Other”*). Ethnicity data indicates whether a sentenced individual is of Hispanic origin. For purposes of this report, individuals whose ethnic background is designated as Hispanic are represented as Hispanic in all tables regardless of racial background. The *Other* race category includes individuals of Native American or Alaskan Native, Asian or Pacific Islander, Multiracial, and “Other” origin.

Sentence Imposed or Sentence Length

Sentence Imposed or *Sentence Length* reports the mean and median terms of the sentence imposed in months. It also includes any time served amounts and imprisonment under USSG §5G1.3. This information is obtained from the Judgment and Commitment Order. Mean and median sentence lengths are rounded to the nearest month. Probation sentences are included as zero months. Any portion of a sentence that is an alternative confinement as described in USSG §5C1.1 is included.

Cases in which a sentence is imposed, but where the length is indeterminable, are excluded. When sentences are expressed as “time served” on the Judgment and Commitment Order, Commission staff uses the dates in federal custody to determine the length of time served when an individual has been in custody the entire time. If the individual has been in and out of custody, or the start date is unclear/missing, then the Commission assigns a value of one day as a minimal time served amount for these cases. In cases where the court imposes a sentence of life imprisonment, a numeric value is necessary to include these cases in any sentence length analysis. Accordingly, life sentences are reported as 470 months, a length consistent with the average life expectancy of individuals sentenced for federal offenses given the average age of those persons. Sentences of greater than 470 months are also reported as 470 months. The footnote in the relevant tables and figures indicates when this occurs.

Sentenced Individuals

Each *Sentenced Individual* or case, as recorded by the Commission, involves a single sentencing event for a single person. Multiple counts of conviction, including counts of conviction charged on multiple indictments, are considered a single sentencing event if a single sentence was imposed for the counts on the same day at the same time by the same judge. An individual may account for more than one case if the person was involved in more than one sentencing event during the fiscal year. Data on co-defendants in the same sentencing will appear as separate cases.

Sentence Type

Using sentencing information obtained from the Judgment and Commitment Order, the *Total Receiving Imprisonment* category includes the number of individuals sentenced (and percent of *Total Cases*) who received a commitment to the Bureau of Prisons. This category is the sum of cases in *Prison Only* and the *Prison and Alternatives* categories.

The *Total Receiving Probation* category includes the number of individuals sentenced (and the percent of *Total Cases*) who received a term of probation with or without a condition of community confinement, intermittent confinement, or home detention. This category is the sum of *Probation Only* and *Probation and Alternatives* categories.

The *Prison Only* category includes individuals sentenced to a term of imprisonment only, with no additional conditions of community confinement, home detention or intermittent confinement.

The *Prison and Alternatives* category includes all cases in which individuals received prison and conditions of alternative confinement as defined in USSG §5C1.1. This category includes, but is not limited to, Zone A, Zone B, or Zone C cases receiving prison with additional conditions of a term of community confinement, home detention, or intermittent confinement.

The *Probation Only* category includes the number of individuals who received a term of probation without a condition of community confinement, intermittent confinement, or home detention.

The *Probation and Alternatives* category includes the number of individuals who received a term of probation with a condition of community confinement, intermittent confinement, or home detention.

The *Fine Only* category includes the number of individuals who received no prison, no probation, and no time of alternative confinement as defined in USSG §5C1.1. Most of these sentenced individuals received a fine and/or a special assessment.

§5K1.1 Substantial Assistance

§5K1.1 Substantial Assistance are cases in which the sentence imposed was below the applicable guideline range and where the court cited §5K1.1 as a reason for the sentence on Section VI of the Statement of Reasons.

§5K1.1 Substantial Assistance and EDP

§5K1.1 Substantial Assistance and EDP are those *§5K1.1 Substantial Assistance* cases in which the court applied the adjustment at §3F1.1 for participation in an Early Disposition Program.

§5K1.1 Substantial Assistance and Other Below Range

§5K1.1 Substantial Assistance and Other Below Range are those *§5K1.1 Substantial Assistance* cases in which the court did not apply the adjustment at §3F1.1 for participation in an Early Disposition Program and cited at least one reason for the sentence on Part VI of the Statement of Reasons other than §5K1.1.

§5K1.1 Substantial Assistance Only

§5K1.1 Substantial Assistance Only are those *§5K1.1 Substantial Assistance* cases in which the court did not apply the adjustment at §3F1.1 for participation in an Early Disposition Program and did not cite any reason for the sentence other than §5K1.1 on Part VI of the Statement of Reasons.

Type of Crime

Information on *Type of Crime* is obtained from the primary guideline detailed in the Presentence Report. If the primary guideline is an “attempt/conspiracy” guideline such as USSG §2X1.1, then the underlying guideline is used to determine the type of crime category. If there is no primary guideline provided, then information about the type of crime category is obtained from the statutes of conviction listed on the Judgment and Commitment Order. When the “type of crime” for the case is determined from the statutes of conviction, the offense applicable to the count of conviction with the highest statutory maximum becomes the “type of crime.” If two or more counts are found to have the same statutory maximum, the “type of crime” is selected according to which count of conviction has the highest statutory minimum. Finally, in the event of a small number of cases still tied, the “type of crime” that best represented the nature of the criminal behavior is chosen. For convenience in analysis, a summary variable describing “type of crime” is derived. This is generated by grouping similar primary offenses into a smaller set of categories. Note that the crime categories differ between the individual and organizational datafiles. Listed below are the type of crimes that are grouped into each of the crime categories used in the individual datafile tables for this report:

Administration of Justice includes obstructing or impeding officers, contempt, obstruction of justice, perjury or subornation of perjury, bribery of a witness, impersonation, failure to appear by defendant, failure to appear by material witness, commission of offense while on release, payment of witness, and misprision of a felony. This category includes persons sentenced under §§2A2.4, 2J1.1, 2J1.2, 2J1.3, 2J1.4, 2J1.6, 2J1.9, and 2X4.1 of the *Guidelines Manual*.

Antitrust includes bid-rigging, price-fixing, and market allocation agreement. This category includes individuals sentenced under §2R1.1 of the *Guidelines Manual*.

Arson includes property damage by explosives and use of fire or explosives to commit a federal felony. This category includes persons sentenced under §§2K1.4 and 2K1.7 (deleted) of the *Guidelines Manual*.

Assault includes attempt to commit murder, assault with intent to murder, threatening communication, aggravated assault, minor assault, and conspiracy that includes assault with attempt to murder. This category includes persons sentenced under §§2A2.1, 2A2.2, and 2A2.3 of the *Guidelines Manual*.

Bribery/Corruption includes offenses involving public officials and violations of federal election campaign laws, bribe involving officials, bribery — bank loan/commercial, loan or gratuity to bank examiner, *etc.*, gratuity involving officials, bribe or gratuity affecting employee plan, conflict of interest, payment or receipt of unauthorized compensation, and making, receiving, or failing to report a contribution, donation, or expenditure in violation of the Federal Election Campaign Act. This category includes persons sentenced under §§2B4.1, 2C1.1, 2C1.2, 2C1.3, 2C1.4 (deleted), 2C1.5, 2C1.6 (deleted), 2C1.7 (deleted), and 2C1.8 of the *Guidelines Manual*.

Burglary/Trespass includes burglary of a residence and burglary of a structure other than a residence, post office burglary, burglary of DEA premises (pharmacy), bank burglary, and trespass. This category includes persons sentenced under §§2B2.1, 2B2.2 (deleted), and 2B2.3 of the *Guidelines Manual*.

Child Pornography includes the receipt or possession of materials involving the sexual exploitation of minors. This category includes persons sentenced under §§2G2.2 and 2G2.4 (deleted) of the *Guidelines Manual*.

Commercialized Vice includes gambling, animal fighting, and prostitution offenses. This category includes persons sentenced under §2G1.1 where the court did NOT apply a Base Offense Level of 34, and all individuals sentenced under §§2E3.1, 2E3.2 (deleted), and 2E3.3 (deleted) of the *Guidelines Manual*.

Drug Possession includes simple possession of all drug types. This category includes persons sentenced under §2D2.1 of the *Guidelines Manual*.

Drug Trafficking includes drug distribution/manufacture — conspiracy, continuing criminal enterprise, drug distribution — employee under 21, drug distribution near school, drug import/export, drug distribution to person under 21, establish/rent drug operation, endangering human life while manufacturing, and narco-terrorism. This category includes persons sentenced under §§2D1.1, 2D1.2, 2D1.5, 2D1.6, 2D1.8, 2D1.10, and 2D1.14 of the *Guidelines Manual*.

Environmental includes waste discharge; specially protected fish, wildlife, and plants; recordkeeping; tampering; and falsification; tampering with a public water system; mishandling of environmental pollutants; and hazardous devices on federal lands. This category includes persons sentenced under §§2K3.1 (deleted), 2Q1.1, 2Q1.2, 2Q1.3, 2Q1.4, 2Q1.5 (deleted), 2Q1.6, 2Q2.1, and 2Q2.2 (deleted) of the *Guidelines Manual*.

Extortion/Racketeering includes extortion by force, or threat of injury or serious damage, extortionate extension of credit, blackmail, Hobbs Act extortion, travel in aid of racketeering, crime relating to racketeering, and violent crimes in aid of racketeering, unlawful conduct relating to contraband cigarettes, and labor racketeering. This category includes persons sentenced under §§2B3.2, 2B3.3, 2E1.1, 2E1.2, 2E1.3, 2E1.4, 2E1.5 (deleted), 2E2.1, 2E4.1, 2E5.1, 2E5.2 (deleted), 2E5.3, 2E5.4 (deleted), 2E5.5 (deleted), and 2E5.6 (deleted) of the *Guidelines Manual*.

Firearms includes unlawful receipt/possession/transportation of firearms, ammunition, or explosive material; prohibited transactions involving firearms or ammunition; possession of guns/explosives on aircraft; unlawful trafficking, etc., in explosives; possession of guns/explosives in federal facility/schools; use of fire or explosives to commit felony; use of firearms or ammunition during crime; improper storage of explosive materials; and failure to report theft of explosive materials. This category includes persons sentenced under §§2K1.1, 2K1.2, 2K1.3, 2K1.5, 2K1.6, 2K2.1, 2K2.2, 2K2.3, 2K2.4, 2K2.5, 2K2.6, and 2K3.2 of the *Guidelines Manual*.

Food and Drug includes tampering with risk of death or injury, providing false information or tampering with products, tampering to injure business, odometer laws and regulations, and violation of regulations involving food, drugs, etc. This category includes persons sentenced under §§2N1.1, 2N1.2, 2N1.3, 2N2.1, and 2N3.1 of the *Guidelines Manual*.

Forgery/Counterfeiting/Copyright includes counterfeit bearer obligations and forgery/counterfeit (non-bearer obligations) as well as criminal infringement of copyright or trademark. This category includes persons sentenced under §§2B5.1, 2B5.2 (deleted), 2B5.3, and 2B5.4 (deleted) of the *Guidelines Manual*.

Fraud/Theft/Embezzlement includes fraud and deceit, embezzlement — property, embezzlement from labor unions, embezzlement — mail/post office, embezzlement from benefit plans, bank embezzlement, bank larceny, theft from benefit plans, other theft —

mail/post office, receipt/possession of stolen property, theft from labor union, theft or damage to cultural heritage resources, insider trading, and aggravated identity theft. This category includes persons sentenced under §§2B1.1, 2B1.2 (deleted), 2B1.3 (deleted), 2B1.4, 2B1.5, 2B1.6, 2F1.1 (deleted), and 2F1.2 (deleted) of the *Guidelines Manual*.

Immigration includes trafficking in U.S. passports, trafficking in entry documents, failure to surrender naturalization certificate, fraudulently acquiring U.S. passports, smuggling, transporting, or harboring an unlawful alien, fraudulently acquiring entry documents, and unlawfully entering or remaining in the U.S. This category includes persons sentenced under §§2L1.1, 2L1.2, 2L1.3 (deleted), 2L2.1, 2L2.2, 2L2.3 (deleted), 2L2.4 (deleted), and 2L2.5 of the *Guidelines Manual*.

Individual Rights includes interference with rights under color of law; force or threats to deny benefits or rights; obstructing an election or registration; manufacture, etc. — eavesdropping device; other deprivations/discrimination; obstructing correspondence; peonage, servitude, and slave trade; intercept communication or eavesdropping; and conspiracy to deprive individual of civil rights. This category includes persons sentenced under §§2H1.1, 2H1.2 (deleted), 2H1.3 (deleted), 2H1.4 (deleted), 2H1.5 (deleted), 2H2.1, 2H3.1, 2H3.2, 2H3.3, 2H4.1, and 2H4.2 of the *Guidelines Manual*.

Kidnapping includes hostage and ransom taking, abduction, unlawful restraint, and aircraft piracy. This category includes persons sentenced under §§2A4.1, 2A4.2, and 2A5.1 of the *Guidelines Manual*.

Manslaughter includes both involuntary and voluntary manslaughter. This category includes persons sentenced under §§2A1.3 and 2A1.4 of the *Guidelines Manual*.

Money Laundering includes laundering of monetary instruments, monetary transaction from unlawful activity, failure to file currency report, and failure to report monetary transactions. This category includes persons sentenced under §§2S1.1, 2S1.2 (deleted), 2S1.3, and 2S1.4 (deleted) of the *Guidelines Manual*.

Murder includes first degree murder, second degree murder, and conspiracy or solicitation to commit murder. This category includes persons sentenced under §§2A1.1, 2A1.2, and 2A1.5 of the *Guidelines Manual*.

National Defense includes treason, sabotage, espionage, evasion of military service, prohibited financial transactions and exports, providing material support to designated foreign terrorist organizations, nuclear, biological, and chemical weapons, and weapons of mass destruction. This category includes persons sentenced under §§2M1.1, 2M2.1, 2M2.2 (deleted), 2M2.3, 2M2.4 (deleted), 2M3.1, 2M3.2, 2M3.3, 2M3.4, 2M3.5, 2M3.6 (deleted), 2M3.7 (deleted), 2M3.8 (deleted), 2M3.9, 2M4.1, 2M5.1, 2M5.2, 2M5.3, 2M6.1, and 2M6.2 of the *Guidelines Manual*.

Obscenity/Other Sex Offenses includes failure to register as a sex offender, recordkeeping offenses involving production of sexually explicit material, and importing, mailing, transporting, or broadcasting obscene material. This category includes persons sentenced under §§2A3.5, 2A3.6, 2G2.5, 2G3.1, and 2G3.2 of the *Guidelines Manual*.

Prison Offenses includes contraband in prisons, riots in federal facilities, and escape. This category includes persons sentenced under §§2P1.1, 2P1.2, 2P1.3, and 2P1.4 (deleted) of the *Guidelines Manual*.

Robbery includes bank robbery, Hobbs Act robbery, post office robbery, other robbery, and carjacking. This category includes persons sentenced under §2B3.1 of the *Guidelines Manual*.

Sexual Abuse includes criminal sexual abuse, sexual abuse of a minor, sexual abuse of a ward, abusive sexual contact, transportation of minor for sex, sex trafficking of children, sex trafficking of adults by force, fraud or coercion, child pornography production, and child exploitation enterprises. This category includes persons sentenced under §2G1.1 who received a Base Offense Level of 34, and all individuals sentenced under §§2A3.1, 2A3.2, 2A3.3, 2A3.4, 2G1.2 (deleted), 2G1.3, 2G2.1, 2G2.3, and 2G2.6 of the *Guidelines Manual*.

Stalking/Harassing includes threatening or harassing communications, hoaxes, false liens, stalking, and domestic violence. This category includes persons sentenced under §§2A6.1 and 2A6.2 of the *Guidelines Manual*.

Tax includes non-payment of taxes, conspiracy to avoid taxes, offenses relating to withholding statements, aiding or advising tax fraud, failing to collect or truthfully account for and pay over taxes, failing to deposit collected taxes in required accounts after notice, alcohol and tobacco tax offenses, and customs taxes. This category includes persons sentenced under §§2T1.1, 2T1.2 (deleted), 2T1.3 (deleted), 2T1.4, 2T1.5 (deleted), 2T1.6, 2T1.7, 2T1.8, 2T1.9, 2T2.1, 2T2.2, 2T3.1, and 2T3.2 (deleted) of the *Guidelines Manual*.

Other Miscellaneous Offenses includes interference with a flight crew, unlawful sale, transportation, possession, manufacturing, or importation of drug paraphernalia, distributing, importing, or exporting listed chemicals, evading reporting or recordkeeping requirements involving chemicals, acquiring a controlled substance by fraud or forgery, border tunnels and subterranean passages, and all other felony and miscellaneous offenses not previously listed in any of the other categories or covered by specific guidelines. This category includes persons sentenced under §§2A5.2, 2D1.7, 2D1.11, 2D1.12, 2D1.13, 2D2.2, 2D2.3, 2D3.1, 2X5.1, 2X5.2, and 2X7.1 of the *Guidelines Manual*. In addition, this category includes persons sentenced under §§2X1.1, 2X2.1, 2X3.1, 2X6.1, and 2X7.2 of the *Guidelines Manual* if no underlying guideline was provided.

Type of Plea

Information on whether the defendant was convicted after a plea. In cases where a plea was entered, *Type of Plea* also indicates whether the plea was in writing and whether the plea was a “binding plea” as described in Federal Rule of Criminal Procedure 11(c)(1)(C).

Within Guideline Range

Within Guideline Range are cases in which the sentence imposed is within the guideline range and within the statutory minimum (if any) and maximum. The type of sentence imposed also must meet minimum zone requirements.

Within Range

Within Range cases are those *Within Guideline Range* cases in which court did not apply the adjustment at §3F1.1 for participation in an Early Disposition Program.

Year

Information on *Year* is obtained from the Judgment and Commitment Order. Unless otherwise indicated, the sentencing year is defined as the fiscal year in which the individual was sentenced.