

United States Sentencing Commission Quarterly Data Report



Fiscal Year 2025

Introduction

As part of its ongoing mission, the United States Sentencing Commission provides Congress, the judiciary, the executive branch, and the general public with data extracted and analyzed from sentencing documents submitted to the Commission by the courts.¹ Data is reported on an annual basis in the Commission's *Annual Report* and *Sourcebook of Federal Sentencing Statistics*.² Additional information on Commission data can be found through the Commission's "Interactive Data Analyzer" at <https://ida.ussc.gov>.

After the Supreme Court's decision in *United States v. Booker* on January 12, 2005, the Commission began reporting data on a quarterly basis in order to provide real-time data concerning the sentences imposed in the federal courts. The types of data reported increased over time to accommodate various requests for additional information. These reports were eventually standardized in a format that was largely unchanged through fiscal year 2015. In fiscal year 2016, the Commission revised the format for its *Quarterly Data Reports*, to include information not previously reported on a quarterly basis, and to make it easier to understand the data that was presented.

Beginning in 2018, the Commission again updated the way it presents quarterly data. Now, all analyses that involve a comparison of the sentence imposed relative to the guideline range that applied in the case are presented in a new way. Sentences are now grouped into two broad categories: Sentences Under the Guidelines Manual and Variances. The former category comprises all cases in which the sentence imposed was within the applicable guideline range or, if outside the range, where the court indicated that one or more of the departure reasons in the Commission's *Guidelines Manual* was a basis for the sentence. Variance cases are those where the sentence was outside the guideline range (either above or below) and where the court did not cite any guideline reason for the sentence. Data for important subgroups within these two categories are also reported.

This report reflects other methodological changes that began with fiscal year 2018 data. Principal among them is the way cases are assigned to a "type of crime" (previously called offense type). Beginning with fiscal year 2018, the guideline (or guidelines) that the court applied in determining the sentence largely determines the crime type category to which a case is assigned. Previously, the maximum penalty provided under the statute of conviction was used for this categorization. Also, the names of some of the crime type categories have been revised and some outdated categories have been removed from the tables and figures.

Additionally, cases involving the production of child pornography have been assigned to the sexual abuse crime type. Previously, these cases were assigned to the child pornography offense type in the *Sourcebook*. This change reflects the way in which the production of child

¹ In each federal felony or Class A misdemeanor case, sentencing courts are required to submit the following documents to the Commission: the Judgment and Commitment Order, the Statement of Reasons, the plea agreement (if applicable), the indictment or other charging document, and the presentence report. See 28 U.S.C. § 994(w).

² Electronic copies of the *Annual Report* and *Sourcebook of Federal Sentencing Statistics* for fiscal years 1995 through 2025 are available at the Commission's website, www.ussc.gov.

pornography is treated under the sentencing guidelines.

Another important methodological change is that sentences are capped at 470 months for all analyses. This is consistent with the Commission's long-standing practice of assigning a value of 470 months to any life imprisonment sentence.

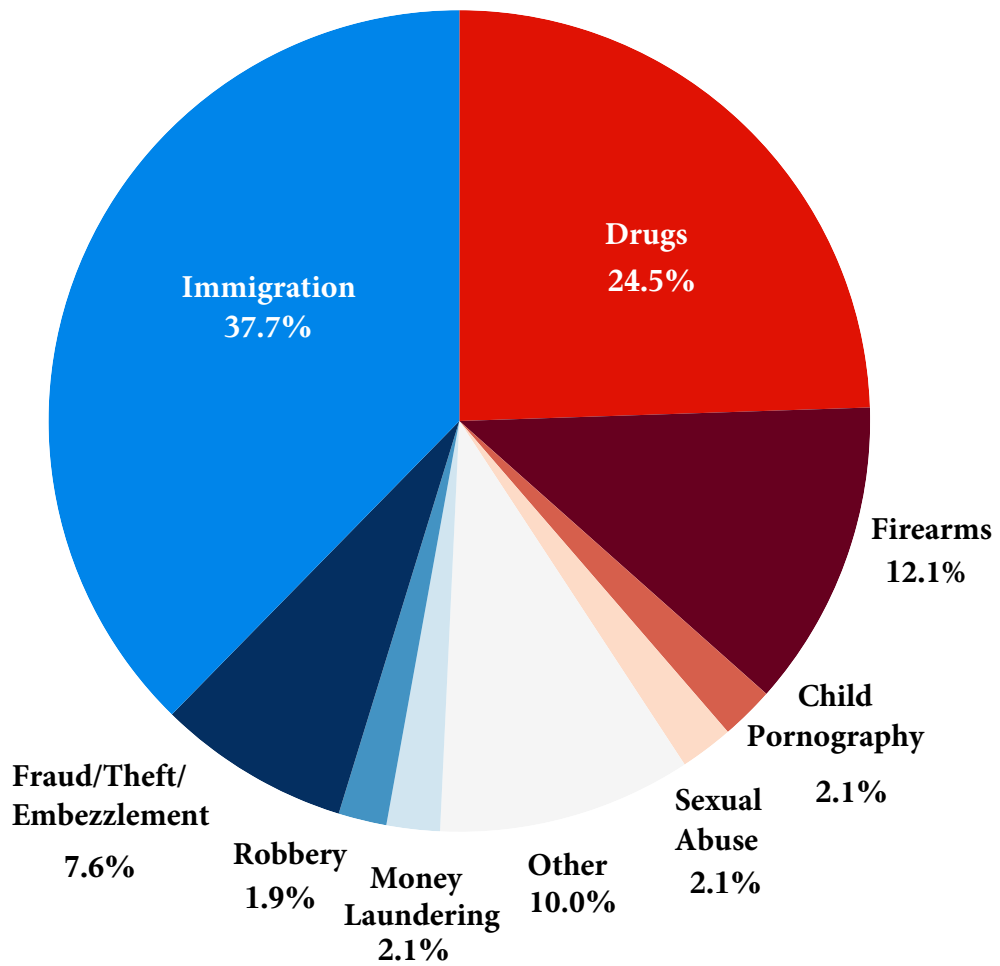
Because of these methodological changes, direct comparisons between data for fiscal year 2018 and later years cannot always be made to data reported in the *Quarterly Data Reports* released before the Final Fiscal Year 2018 *Quarterly Data Report*.

CONTENTS

Figure 1: Sentenced Individuals by Type of Crime	1
Table 1: Sentenced Individuals by Type of Crime	2
Table 2: Sentenced Individuals in Each Circuit and District.....	3
Figure 2: Number of Sentenced Individuals by Selected Primary Guidelines	5
Table 3: Race of Sentenced Individuals by Type of Crime	6
Table 4: Gender of Sentenced Individuals by Type of Crime	7
Table 5: Citizenship of Sentenced Individuals by Type of Crime.....	8
Table 6: Sentence Length by Type of Crime	9
Table 7: Sentence Type by Type of Crime	10
Table 8: Sentence Imposed Relative to the Guideline Range.....	11
Figure 3: Sentences Under the Guidelines Manual and Variances Quarterly Data.....	12
Figure 4: Sentence Imposed Relative to the Guideline Range Quarterly Data.....	13
Table 9: Sentence Imposed Relative to the Guideline Range In Each Circuit and District.....	14
Table 10: Sentence Imposed Relative to the Guideline Range by Type of Crime	17
Table 11: Sentence Imposed Relative to the Guideline Range by Primary Sentencing Guideline	18
Table 12: Attribution Category for Sentences Outside of the Guideline Range.....	20
Table 13: Extent of Upward Departures by Type of Crime.....	22
Table 14: Extent of Upward Variances by Type of Crime	23
Table 15: Extent of §5K1.1 Substantial Assistance Departures by Type of Crime.....	24
Table 16: Extent of §5K3.1 Early Disposition Program Departures by Type of Crime.....	25
Table 17: Extent of Other Downward Departures by Type of Crime.....	26

Table 18: Extent of Downward Variances by Type of Crime	27
Figure 5: Sentence Length and Guideline Minimum Quarterly Data for Sentenced Individuals.	28
Figure 6: Sentence Length and Guideline Minimum Quarterly Data for Individuals Sentenced Under §2B1.1	29
Figure 7: Sentence Length and Guideline Minimum Quarterly Data for Individuals Sentenced Under §2K2.1	30
Figure 8: Sentence Length and Guideline Minimum Quarterly Data for Individuals Sentenced Under §2L1.1	31
Figure 9: Sentence Length and Guideline Minimum Quarterly Data for Individuals Sentenced Under §2L1.2	32
Figure 10: Sentence Length and Guideline Minimum Quarterly Data for Individuals Sentenced Under §2D1.1	33
Figure 11: Distribution of Primary Drug Type in Federal Drug Cases	34
Figure 12: Sentence Length In Drug Trafficking Cases by Major Drug Type Quarterly Data	35
 <i>Appendix</i>	
Appendix A: Descriptions of Datafiles and Variables.....	A-1

Figure 1
SENTENCED INDIVIDUALS BY TYPE OF CRIME¹
Fiscal Year 2025



¹ This figure includes the 66,662 cases reported to the Commission. The Drugs category includes trafficking and simple possession. Descriptions of variables used in this figure are provided in Appendix A.

SOURCE: U.S. Sentencing Commission, 2025 Datafile, USSCFY25.

Table 1

SENTENCED INDIVIDUALS BY TYPE OF CRIME¹
Fiscal Year 2025

TYPE OF CRIME	N	%
TOTAL	66,662	100.0
Administration of Justice	559	0.8
Antitrust	18	0.0
Arson	77	0.1
Assault	854	1.3
Bribery/Corruption	310	0.5
Burglary/Trespass	50	0.1
Child Pornography	1,432	2.1
Commercialized Vice	88	0.1
Drug Possession	107	0.2
Drug Trafficking	16,222	24.3
Environmental	150	0.2
Extortion/Racketeering	57	0.1
Firearms	8,041	12.1
Food and Drug	44	0.1
Forgery/Counter/Copyright	83	0.1
Fraud/Theft/Embezzlement	5,080	7.6
Immigration	25,119	37.7
Individual Rights	100	0.2
Kidnapping	146	0.2
Manslaughter	94	0.1
Money Laundering	1,368	2.1
Murder	405	0.6
National Defense	499	0.7
Obscenity/Other Sex Offenses	325	0.5
Prison Offenses	414	0.6
Robbery	1,249	1.9
Sexual Abuse	1,409	2.1
Stalking/Harassing	288	0.4
Tax	409	0.6
Other	1,665	2.5

¹ Descriptions of variables used in this table are provided in Appendix A.

Table 2

SENTENCED INDIVIDUALS IN EACH CIRCUIT AND DISTRICT¹
Fiscal Year 2025

CIRCUIT			CIRCUIT		
District	N	%	District	N	%
TOTAL	66,662	100.0			
D.C. CIRCUIT	423	0.6	FIFTH CIRCUIT	21,717	32.6
District of Columbia	423	0.6	Louisiana		
FIRST CIRCUIT	1,903	2.9	Eastern	324	0.5
Maine	144	0.2	Middle	95	0.1
Massachusetts	558	0.8	Western	378	0.6
New Hampshire	130	0.2	Mississippi		
Puerto Rico	972	1.5	Northern	180	0.3
Rhode Island	99	0.1	Southern	378	0.6
SECOND CIRCUIT	2,795	4.2	Texas		
Connecticut	260	0.4	Eastern	1,015	1.5
New York			Northern	1,386	2.1
Eastern	604	0.9	Southern	7,545	11.3
Northern	419	0.6	Western	10,416	15.6
Southern	899	1.3	SIXTH CIRCUIT	4,310	6.5
Western	403	0.6	Kentucky		
Vermont	210	0.3	Eastern	390	0.6
THIRD CIRCUIT	2,222	3.3	Western	388	0.6
Delaware	149	0.2	Michigan		
New Jersey	673	1.0	Eastern	851	1.3
Pennsylvania			Western	242	0.4
Eastern	477	0.7	Ohio		
Middle	408	0.6	Northern	662	1.0
Western	456	0.7	Southern	560	0.8
Virgin Islands	59	0.1	Tennessee		
FOURTH CIRCUIT	4,183	6.3	Eastern	532	0.8
Maryland	443	0.7	Middle	346	0.5
North Carolina			Western	339	0.5
Eastern	811	1.2	SEVENTH CIRCUIT	2,111	3.2
Middle	312	0.5	Illinois		
Western	352	0.5	Central	218	0.3
South Carolina	591	0.9	Northern	587	0.9
Virginia			Southern	240	0.4
Eastern	884	1.3	Indiana		
Western	248	0.4	Northern	279	0.4
West Virginia			Southern	356	0.5
Northern	326	0.5	Wisconsin		
Southern	216	0.3	Eastern	302	0.5
			Western	129	0.2

Table 2 (cont.)

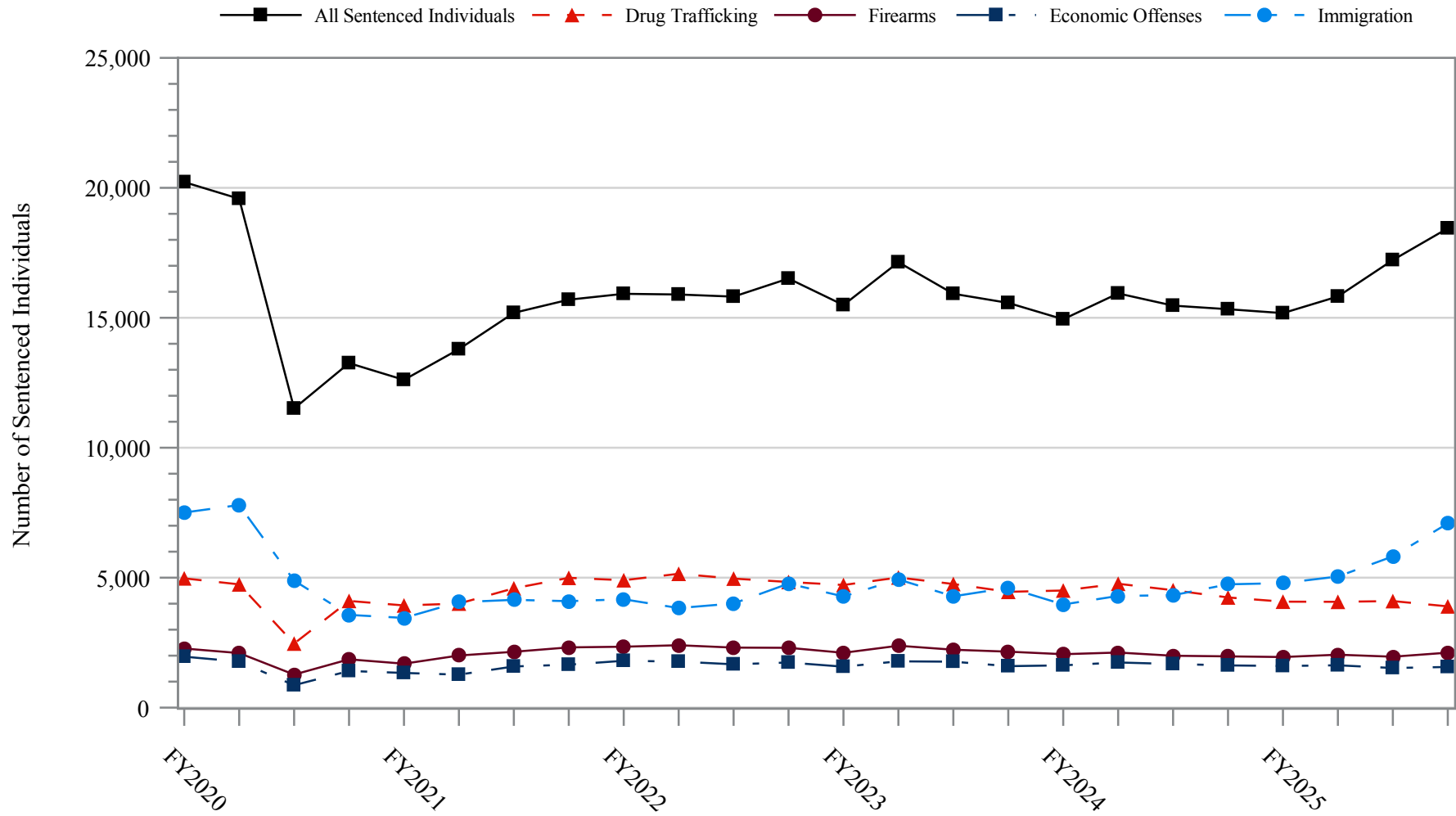
CIRCUIT			CIRCUIT		
District	N	%	District	N	%
EIGHTH CIRCUIT	4,611	6.9	TENTH CIRCUIT	5,853	8.8
Arkansas			Colorado	377	0.6
Eastern	475	0.7	Kansas	410	0.6
Western	164	0.2	New Mexico	2,699	4.0
Iowa			Oklahoma		
Northern	313	0.5	Eastern	259	0.4
Southern	343	0.5	Northern	564	0.8
Minnesota	396	0.6	Western	584	0.9
Missouri			Utah	779	1.2
Eastern	988	1.5	Wyoming	181	0.3
Western	668	1.0			
Nebraska	433	0.6	ELEVENTH CIRCUIT	5,543	8.3
North Dakota	325	0.5	Alabama		
South Dakota	506	0.8	Middle	263	0.4
			Northern	516	0.8
NINTH CIRCUIT	10,991	16.5	Southern	299	0.4
Alaska	138	0.2	Florida		
Arizona	4,134	6.2	Middle	1,528	2.3
California			Northern	301	0.5
Central	932	1.4	Southern	1,457	2.2
Eastern	472	0.7	Georgia		
Northern	364	0.5	Middle	405	0.6
Southern	2,661	4.0	Northern	502	0.8
Guam	35	0.1	Southern	272	0.4
Hawaii	142	0.2			
Idaho	309	0.5			
Montana	403	0.6			
Nevada	202	0.3			
Northern Mariana Islands	17	0.0			
Oregon	501	0.8			
Washington					
Eastern	335	0.5			
Western	346	0.5			

¹ Descriptions of variables used in this table are provided in Appendix A.

SOURCE: U.S. Sentencing Commission, 2025 Datafile, USSCFY25.

Figure 2

NUMBER OF SENTENCED INDIVIDUALS BY SELECTED PRIMARY GUIDELINES¹
Fiscal Years 2020 - 2025



¹ The *Drug Trafficking* category includes individuals sentenced under §§2D1.1, 2D1.2, 2D1.5, 2D1.6, 2D1.8, 2D1.10, or 2D1.14. The *Firearms* category includes individuals sentenced under §§2K1.3, 2K1.4, 2K2.1, 2K2.4, or 2K2.5. The *Economic Offenses* category includes individuals sentenced under §§2B1.1, 2B1.4, 2B1.5, 2B2.1, 2B3.1, 2B3.2, 2B4.1, 2B5.1, or 2B5.3. The *Immigration* category includes individuals sentenced under §§2L1.1, 2L1.2, 2L2.1, or 2L2.2. Descriptions of variables used in this figure are provided in Appendix A.

SOURCE: U.S. Sentencing Commission, 2020 - 2025 Datafiles, USSCFY20 - USSCFY25.

Table 3

RACE OF SENTENCED INDIVIDUALS BY TYPE OF CRIME¹
Fiscal Year 2025

TYPE OF CRIME	TOTAL	WHITE		BLACK		HISPANIC		OTHER	
		N	%	N	%	N	%	N	%
TOTAL	65,173	11,852	18.2	14,671	22.5	35,998	55.2	2,652	4.1
Administration of Justice	556	184	33.1	110	19.8	209	37.6	53	9.5
Antitrust	18	14	77.8	1	5.6	3	16.7	0	0.0
Arson	77	31	40.3	20	26.0	13	16.9	13	16.9
Assault	846	152	18.0	219	25.9	168	19.9	307	36.3
Bribery/Corruption	309	106	34.3	91	29.4	83	26.9	29	9.4
Burglary/Trespass	50	14	28.0	14	28.0	7	14.0	15	30.0
Child Pornography	1,432	1,049	73.3	83	5.8	225	15.7	75	5.2
Commercialized Vice	88	20	22.7	38	43.2	17	19.3	13	14.8
Drug Possession	91	39	42.9	18	19.8	27	29.7	7	7.7
Drug Trafficking	16,210	3,824	23.6	5,013	30.9	6,849	42.3	524	3.2
Environmental	147	83	56.5	6	4.1	41	27.9	17	11.6
Extortion/Racketeering	56	27	48.2	12	21.4	13	23.2	4	7.1
Firearms	8,031	1,615	20.1	4,541	56.5	1,606	20.0	269	3.3
Food and Drug	44	33	75.0	3	6.8	7	15.9	1	2.3
Forgery/Counter/Copyright	83	32	38.6	28	33.7	8	9.6	15	18.1
Fraud/Theft/Embezzlement	5,044	1,829	36.3	1,896	37.6	989	19.6	330	6.5
Immigration	24,711	534	2.2	401	1.6	23,624	95.6	152	0.6
Individual Rights	96	44	45.8	30	31.3	14	14.6	8	8.3
Kidnapping	146	23	15.8	55	37.7	60	41.1	8	5.5
Manslaughter	94	6	6.4	9	9.6	7	7.4	72	76.6
Money Laundering	1,365	322	23.6	354	25.9	542	39.7	147	10.8
Murder	404	58	14.4	136	33.7	133	32.9	77	19.1
National Defense	489	60	12.3	41	8.4	369	75.5	19	3.9
Obscenity/Other Sex Offenses	324	125	38.6	55	17.0	36	11.1	108	33.3
Prison Offenses	404	83	20.5	160	39.6	129	31.9	32	7.9
Robbery	1,248	141	11.3	823	65.9	242	19.4	42	3.4
Sexual Abuse	1,407	773	54.9	219	15.6	239	17.0	176	12.5
Stalking/Harassing	285	166	58.2	45	15.8	41	14.4	33	11.6
Tax	409	222	54.3	67	16.4	71	17.4	49	12.0
Other	709	243	34.3	183	25.8	226	31.9	57	8.0

¹ Of the 66,662 cases, 1,489 were excluded due to missing information on sentenced individual's race. Descriptions of variables used in this table are provided in Appendix A.

Table 4

GENDER OF SENTENCED INDIVIDUALS BY TYPE OF CRIME¹
Fiscal Year 2025

TYPE OF CRIME	TOTAL	MALE		FEMALE	
		N	%	N	%
TOTAL	66,104	58,243	88.1	7,861	11.9
Administration of Justice	559	406	72.6	153	27.4
Antitrust	18	16	88.9	2	11.1
Arson	77	62	80.5	15	19.5
Assault	854	766	89.7	88	10.3
Bribery/Corruption	310	228	73.5	82	26.5
Burglary/Trespass	50	43	86.0	7	14.0
Child Pornography	1,432	1,408	98.3	24	1.7
Commercialized Vice	88	70	79.5	18	20.5
Drug Possession	101	72	71.3	29	28.7
Drug Trafficking	16,222	13,690	84.4	2,532	15.6
Environmental	150	134	89.3	16	10.7
Extortion/Racketeering	57	50	87.7	7	12.3
Firearms	8,040	7,711	95.9	329	4.1
Food and Drug	44	28	63.6	16	36.4
Forgery/Counter/Copyright	83	66	79.5	17	20.5
Fraud/Theft/Embezzlement	5,078	3,600	70.9	1,478	29.1
Immigration	25,016	23,018	92.0	1,998	8.0
Individual Rights	100	86	86.0	14	14.0
Kidnapping	146	128	87.7	18	12.3
Manslaughter	94	81	86.2	13	13.8
Money Laundering	1,368	1,049	76.7	319	23.3
Murder	405	369	91.1	36	8.9
National Defense	496	423	85.3	73	14.7
Obscenity/Other Sex Offenses	325	321	98.8	4	1.2
Prison Offenses	414	372	89.9	42	10.1
Robbery	1,249	1,179	94.4	70	5.6
Sexual Abuse	1,409	1,313	93.2	96	6.8
Stalking/Harassing	288	272	94.4	16	5.6
Tax	409	306	74.8	103	25.2
Other	1,222	976	79.9	246	20.1

¹ Of the 66,662 cases, 558 were excluded due to missing information on sentenced individual's gender. Descriptions of variables used in this table are provided in Appendix A.

Table 5

CITIZENSHIP OF SENTENCED INDIVIDUALS BY TYPE OF CRIME¹
Fiscal Year 2025

TYPE OF CRIME	TOTAL	U.S. CITIZEN		NON-U.S. CITIZEN	
		N	%	N	%
TOTAL	66,259	37,373	56.4	28,886	43.6
Administration of Justice	556	407	73.2	149	26.8
Antitrust	18	16	88.9	2	11.1
Arson	77	73	94.8	4	5.2
Assault	838	784	93.6	54	6.4
Bribery/Corruption	310	290	93.5	20	6.5
Burglary/Trespass	50	48	96.0	2	4.0
Child Pornography	1,431	1,357	94.8	74	5.2
Commercialized Vice	88	77	87.5	11	12.5
Drug Possession	92	87	94.6	5	5.4
Drug Trafficking	16,202	13,110	80.9	3,092	19.1
Environmental	146	108	74.0	38	26.0
Extortion/Racketeering	56	47	83.9	9	16.1
Firearms	8,040	7,604	94.6	436	5.4
Food and Drug	43	38	88.4	5	11.6
Forgery/Counter/Copyright	83	67	80.7	16	19.3
Fraud/Theft/Embezzlement	5,051	4,318	85.5	733	14.5
Immigration	25,040	2,729	10.9	22,311	89.1
Individual Rights	99	92	92.9	7	7.1
Kidnapping	146	118	80.8	28	19.2
Manslaughter	94	94	100.0	0	0.0
Money Laundering	1,367	979	71.6	388	28.4
Murder	405	336	83.0	69	17.0
National Defense	492	182	37.0	310	63.0
Obscenity/Other Sex Offenses	325	311	95.7	14	4.3
Prison Offenses	407	385	94.6	22	5.4
Robbery	1,248	1,175	94.2	73	5.8
Sexual Abuse	1,408	1,333	94.7	75	5.3
Stalking/Harassing	287	272	94.8	15	5.2
Tax	408	381	93.4	27	6.6
Other	1,452	555	38.2	897	61.8

¹ Of the 66,662 cases, 403 were excluded due to missing information on sentenced individual's citizenship status. Descriptions of variables used in this table are provided in Appendix A.

Table 6

SENTENCE LENGTH BY TYPE OF CRIME¹
Fiscal Year 2025

TYPE OF CRIME	Mean Months	Median Months	N
TOTAL	47	18	66,662
Administration of Justice	13	9	559
Antitrust	8	6	18
Arson	66	60	77
Assault	71	46	854
Bribery/Corruption	19	12	310
Burglary/Trespass	18	6	50
Child Pornography	119	97	1,432
Commercialized Vice	11	6	88
Drug Possession	2	0	107
Drug Trafficking	87	70	16,222
Environmental	3	0	150
Extortion/Racketeering	48	24	57
Firearms	51	41	8,041
Food and Drug	5	0	44
Forgery/Counter/Copyright	17	12	83
Fraud/Theft/Embezzlement	22	12	5,080
Immigration	10	5	25,119
Individual Rights	56	16	100
Kidnapping	183	154	146
Manslaughter	83	71	94
Money Laundering	61	30	1,368
Murder	286	292	405
National Defense	13	0	499
Obscenity/Other Sex Offenses	20	18	325
Prison Offenses	13	11	414
Robbery	107	90	1,249
Sexual Abuse	230	210	1,409
Stalking/Harassing	26	22	288
Tax	17	12	409
Other	2	0	1,665

¹ Sentences greater than 470 months (including life) and probation were included in the sentence average computations as 470 months and zero months, respectively. In addition, the information presented in this table includes conditions of confinement as described in USSG §5C1.1. Descriptions of variables used in this table are provided in Appendix A.

Table 7
SENTENCE TYPE BY TYPE OF CRIME¹
Fiscal Year 2025

TYPE OF CRIME	TOTAL	TOTAL RECEIVING IMPRISONMENT				Prison and Alternatives ²		TOTAL RECEIVING PROBATION				Probation and Alternatives ²		Probation Only		TOTAL RECEIVING FINE ONLY	
		N	%	N	%	N	%	N	%	N	%	N	%	N	%		
TOTAL	66,662	61,557	92.3	60,135	90.2	1,422	2.1	4,829	7.2	688	1.0	4,141	6.2	276	0.4		
Administration of Justice	559	422	75.5	403	72.1	19	3.4	135	24.2	22	3.9	113	20.2	2	0.4		
Antitrust	18	9	50.0	9	50.0	0	0.0	9	50.0	5	27.8	4	22.2	0	0.0		
Arson	77	77	100.0	72	93.5	5	6.5	0	0.0	0	0.0	0	0.0	0	0.0		
Assault	854	783	91.7	755	88.4	28	3.3	69	8.1	14	1.6	55	6.4	2	0.2		
Bribery/Corruption	310	219	70.6	205	66.1	14	4.5	90	29.0	21	6.8	69	22.3	1	0.3		
Burglary/Trespass	50	33	66.0	32	64.0	1	2.0	16	32.0	4	8.0	12	24.0	1	2.0		
Child Pornography	1,432	1,421	99.2	1,399	97.7	22	1.5	11	0.8	1	0.1	10	0.7	0	0.0		
Commercialized Vice	88	65	73.9	58	65.9	7	8.0	23	26.1	7	8.0	16	18.2	0	0.0		
Drug Possession	107	55	51.4	55	51.4	0	0.0	39	36.4	0	0.0	39	36.4	13	12.1		
Drug Trafficking	16,222	15,665	96.6	15,215	93.8	450	2.8	556	3.4	94	0.6	462	2.8	1	0.0		
Environmental	150	61	40.7	59	39.3	2	1.3	82	54.7	14	9.3	68	45.3	7	4.7		
Extortion/Racketeering	57	45	78.9	45	78.9	0	0.0	12	21.1	5	8.8	7	12.3	0	0.0		
Firearms	8,041	7,552	93.9	7,378	91.8	174	2.2	485	6.0	86	1.1	399	5.0	4	0.0		
Food and Drug	44	11	25.0	11	25.0	0	0.0	31	70.5	1	2.3	30	68.2	2	4.5		
Forgery/Counter/Copyright	83	62	74.7	58	69.9	4	4.8	21	25.3	5	6.0	16	19.3	0	0.0		
Fraud/Theft/Embezzlement	5,080	3,813	75.1	3,633	71.5	180	3.5	1,252	24.6	225	4.4	1,027	20.2	15	0.3		
Immigration	25,119	24,006	95.6	23,702	94.4	304	1.2	1,110	4.4	86	0.3	1,024	4.1	3	0.0		
Individual Rights	100	74	74.0	67	67.0	7	7.0	26	26.0	6	6.0	20	20.0	0	0.0		
Kidnapping	146	146	100.0	144	98.6	2	1.4	0	0.0	0	0.0	0	0.0	0	0.0		
Manslaughter	94	88	93.6	85	90.4	3	3.2	6	6.4	0	0.0	6	6.4	0	0.0		
Money Laundering	1,368	1,208	88.3	1,168	85.4	40	2.9	160	11.7	27	2.0	133	9.7	0	0.0		
Murder	405	403	99.5	390	96.3	13	3.2	2	0.5	0	0.0	2	0.5	0	0.0		
National Defense	499	422	84.6	410	82.2	12	2.4	23	4.6	1	0.2	22	4.4	54	10.8		
Obscenity/Other Sex Offenses	325	304	93.5	283	87.1	21	6.5	21	6.5	5	1.5	16	4.9	0	0.0		
Prison Offenses	414	395	95.4	378	91.3	17	4.1	19	4.6	1	0.2	18	4.3	0	0.0		
Robbery	1,249	1,235	98.9	1,206	96.6	29	2.3	14	1.1	3	0.2	11	0.9	0	0.0		
Sexual Abuse	1,409	1,399	99.3	1,373	97.4	26	1.8	10	0.7	1	0.1	9	0.6	0	0.0		
Stalking/Harassing	288	247	85.8	232	80.6	15	5.2	41	14.2	5	1.7	36	12.5	0	0.0		
Tax	409	287	70.2	264	64.5	23	5.6	120	29.3	29	7.1	91	22.2	2	0.5		
Other	1,665	1,050	63.1	1,046	62.8	4	0.2	446	26.8	20	1.2	426	25.6	169	10.2		

¹ Descriptions of variables used in this table are provided in Appendix A.

² Alternatives include all cases in which sentenced individuals received conditions of confinement as described in USSG §5C1.1.

Table 8

SENTENCE IMPOSED RELATIVE TO THE GUIDELINE RANGE¹
Fiscal Year 2025

	<u>N</u>	<u>%</u>
TOTAL CASES	66,036	100.0
SENTENCES UNDER THE GUIDELINES MANUAL	45,459	68.8
Within Guideline Range	33,979	51.5
Upward Departure ²	249	0.4
Downward Departure		
§5K1.1 Substantial Assistance	5,423	8.2
§5K3.1 Early Disposition Program	4,012	6.1
Other Government Motion ³	863	1.3
Non-Government Departure ⁴	933	1.4
VARIANCES	20,577	31.2
Upward Variance ⁵	2,890	4.4
Downward Variance		
Government Motion ⁶	6,338	9.6
Non-Government Variance ⁷	11,349	17.2

¹ This table reflects the 66,662 cases sentenced in fiscal year 2025. Of these, 626 cases were excluded because information was missing from the submitted documents that prevented the comparison of the sentence and the guideline range. Descriptions of variables used in this table are provided in Appendix A.

² Cases in which the sentence imposed was above the applicable guideline range and for which the court cited a reason on Part V of the Statement of Reasons form, other than §5K1.1 or §5K3.1.

³ Cases in which the sentence imposed was below the applicable guideline range and for which the court cited a reason on Part V of the Statement of Reasons form, other than §5K1.1 or §5K3.1, and where the prosecution initiated, proposed, or stipulated to the sentence.

⁴ Cases in which the sentence imposed was below the applicable guideline range and for which the court cited a reason on Part V of the Statement of Reasons form, other than §5K1.1 or §5K3.1, and where the prosecution did not initiate, propose, or stipulate to the sentence.

⁵ Cases in which the sentence imposed was above the applicable guideline range and for which the court cited a reason on Part VI of the Statement of Reasons form.

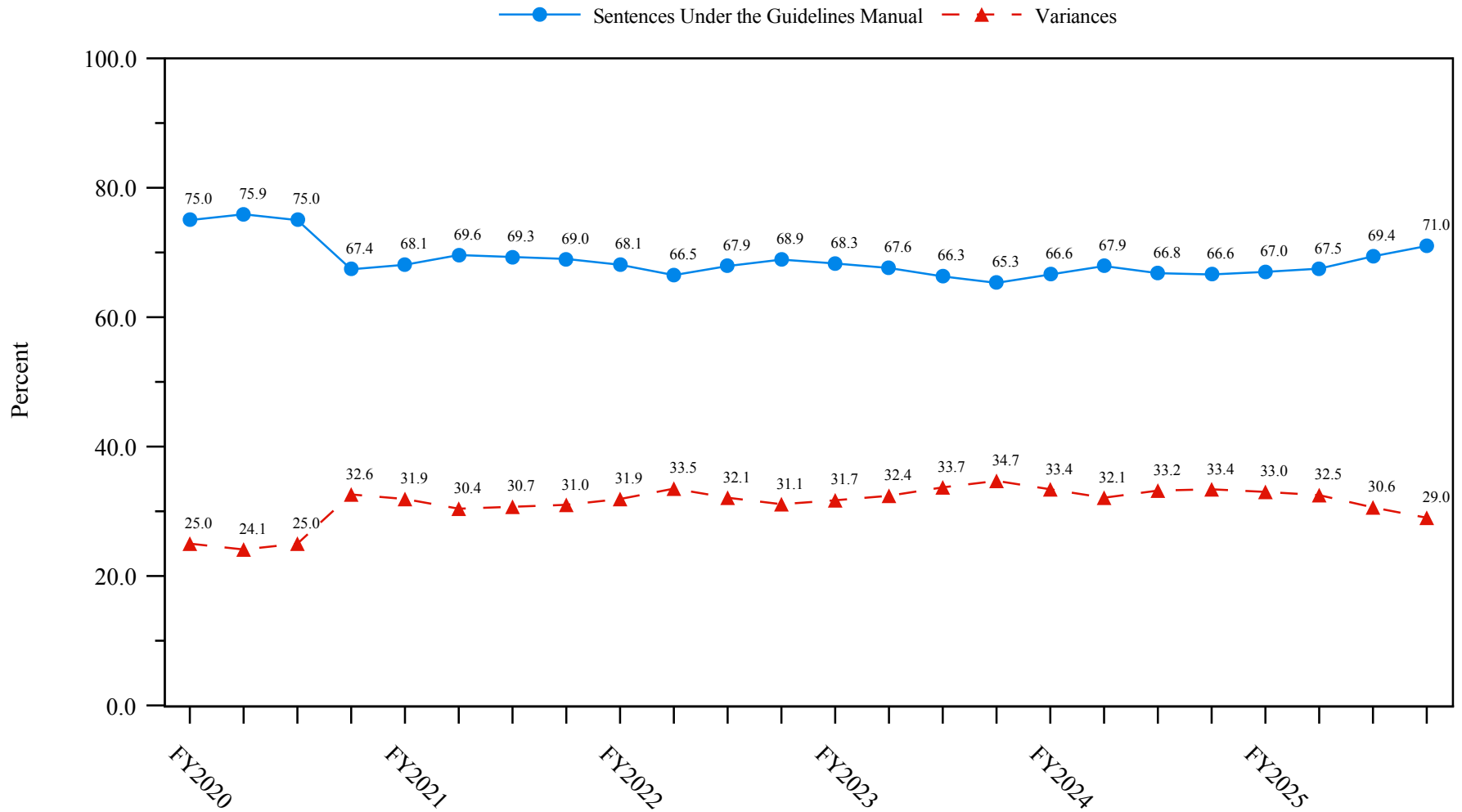
⁶ Cases in which the sentence imposed was below the applicable guideline range and for which the court cited a reason on Part VI of the Statement of Reasons form, and where the prosecution initiated, proposed, or stipulated to the sentence.

⁷ Cases in which the sentence imposed was below the applicable guideline range and for which the court cited a reason on Part VI of the Statement of Reasons form, or where no reason was given, and where the prosecution did not initiate, propose, or stipulate to the sentence.

SOURCE: U.S. Sentencing Commission, 2025 Datafile, USSCFY25.

Figure 3

SENTENCES UNDER THE GUIDELINES MANUAL AND VARIANCES QUARTERLY DATA¹
Fiscal Years 2020 - 2025

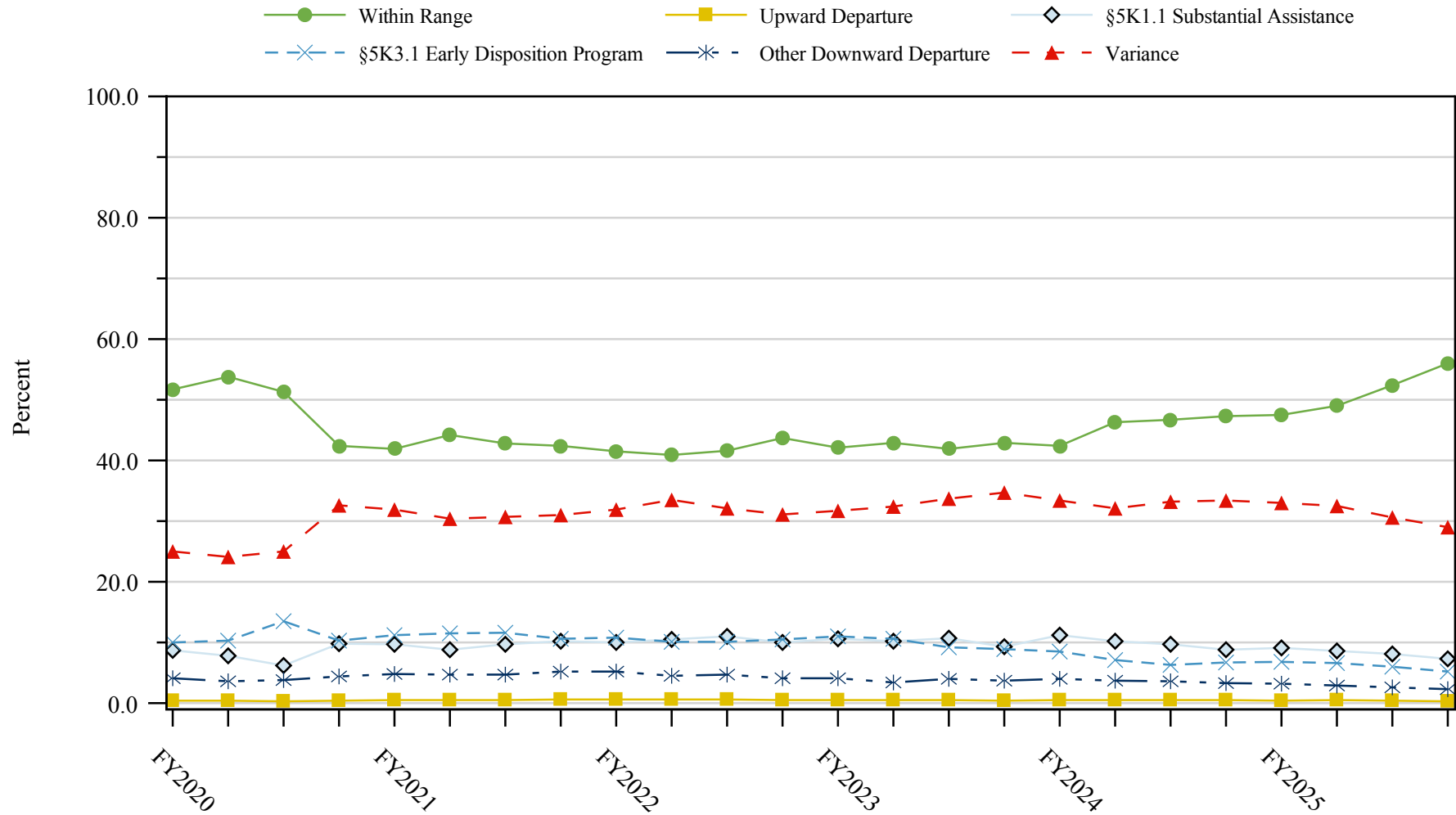


¹ Descriptions of variables used in this figure are provided in Appendix A.

SOURCE: U.S. Sentencing Commission, 2020 - 2025 Datafiles, USSCFY20 - USSCFY25.

Figure 4

SENTENCE IMPOSED RELATIVE TO THE GUIDELINE RANGE QUARTERLY DATA¹
Fiscal Years 2020 - 2025



¹ Descriptions of variables used in this figure are provided in Appendix A.

SOURCE: U.S. Sentencing Commission, 2020 - 2025 Datafiles, USSCFY20 - USSCFY25.

Table 9

**SENTENCE IMPOSED RELATIVE TO THE GUIDELINE RANGE
IN EACH CIRCUIT AND DISTRICT¹
Fiscal Year 2025**

CIRCUIT District	TOTAL	WITHIN GUIDELINE RANGE		DEPARTURE								VARIANCE	
		N	%	UPWARD		§5K1.1		§5K3.1		DOWNWARD		N	%
				N	%	N	%	N	%	N	%		
TOTAL	66,036	33,979	51.5	249	0.4	5,423	8.2	4,012	6.1	1,796	2.7	20,577	31.2
D.C. CIRCUIT	423	175	41.4	4	0.9	46	10.9	0	0.0	12	2.8	186	44.0
District of Columbia	423	175	41.4	4	0.9	46	10.9	0	0.0	12	2.8	186	44.0
FIRST CIRCUIT	1,901	707	37.2	6	0.3	174	9.2	9	0.5	73	3.8	932	49.0
Maine	144	56	38.9	0	0.0	27	18.8	0	0.0	3	2.1	58	40.3
Massachusetts	558	159	28.5	3	0.5	55	9.9	9	1.6	28	5.0	304	54.5
New Hampshire	130	28	21.5	0	0.0	19	14.6	0	0.0	5	3.8	78	60.0
Puerto Rico	971	433	44.6	3	0.3	69	7.1	0	0.0	36	3.7	430	44.3
Rhode Island	98	31	31.6	0	0.0	4	4.1	0	0.0	1	1.0	62	63.3
SECOND CIRCUIT	2,790	879	31.5	6	0.2	481	17.2	0	0.0	110	3.9	1,314	47.1
Connecticut	260	55	21.2	2	0.8	33	12.7	0	0.0	32	12.3	138	53.1
New York													
Eastern	604	140	23.2	2	0.3	107	17.7	0	0.0	55	9.1	300	49.7
Northern	418	246	58.9	2	0.5	81	19.4	0	0.0	9	2.2	80	19.1
Southern	895	223	24.9	0	0.0	120	13.4	0	0.0	11	1.2	541	60.4
Western	403	171	42.4	0	0.0	89	22.1	0	0.0	1	0.2	142	35.2
Vermont	210	44	21.0	0	0.0	51	24.3	0	0.0	2	1.0	113	53.8
THIRD CIRCUIT	2,214	886	40.0	4	0.2	367	16.6	16	0.7	42	1.9	899	40.6
Delaware	149	93	62.4	1	0.7	9	6.0	12	8.1	1	0.7	33	22.1
New Jersey	666	194	29.1	1	0.2	138	20.7	0	0.0	2	0.3	331	49.7
Pennsylvania													
Eastern	476	197	41.4	1	0.2	88	18.5	3	0.6	8	1.7	179	37.6
Middle	408	171	41.9	0	0.0	79	19.4	1	0.2	24	5.9	133	32.6
Western	456	196	43.0	1	0.2	51	11.2	0	0.0	4	0.9	204	44.7
Virgin Islands	59	35	59.3	0	0.0	2	3.4	0	0.0	3	5.1	19	32.2
FOURTH CIRCUIT	4,125	1,928	46.7	16	0.4	529	12.8	1	0.0	64	1.6	1,587	38.5
Maryland	424	118	27.8	4	0.9	67	15.8	0	0.0	13	3.1	222	52.4
North Carolina													
Eastern	797	486	61.0	4	0.5	180	22.6	0	0.0	4	0.5	123	15.4
Middle	312	162	51.9	0	0.0	17	5.4	1	0.3	2	0.6	130	41.7
Western	351	160	45.6	2	0.6	35	10.0	0	0.0	4	1.1	150	42.7
South Carolina	589	210	35.7	2	0.3	112	19.0	0	0.0	16	2.7	249	42.3
Virginia													
Eastern	862	469	54.4	3	0.3	35	4.1	0	0.0	14	1.6	341	39.6
Western	248	75	30.2	0	0.0	46	18.5	0	0.0	5	2.0	122	49.2
West Virginia													
Northern	326	151	46.3	0	0.0	24	7.4	0	0.0	1	0.3	150	46.0
Southern	216	97	44.9	1	0.5	13	6.0	0	0.0	5	2.3	100	46.3

Table 9 (cont.)

CIRCUIT District	TOTAL	WITHIN GUIDELINE		DEPARTURE								VARIANCE	
		RANGE		UPWARD		\$5K1.1		\$5K3.1		DOWNWARD		N	%
		N	%	N	%	N	%	N	%	N	%	N	%
FIFTH CIRCUIT	21,432	15,403	71.9	78	0.4	823	3.8	214	1.0	489	2.3	4,425	20.6
Louisiana													
Eastern	323	204	63.2	9	2.8	28	8.7	3	0.9	3	0.9	76	23.5
Middle	94	58	61.7	0	0.0	15	16.0	0	0.0	0	0.0	21	22.3
Western	377	264	70.0	8	2.1	39	10.3	0	0.0	6	1.6	60	15.9
Mississippi													
Northern	179	93	52.0	3	1.7	23	12.8	0	0.0	4	2.2	56	31.3
Southern	378	244	64.6	0	0.0	40	10.6	0	0.0	5	1.3	89	23.5
Texas													
Eastern	1,015	605	59.6	11	1.1	66	6.5	0	0.0	10	1.0	323	31.8
Northern	1,382	937	67.8	16	1.2	127	9.2	1	0.1	13	0.9	288	20.8
Southern	7,542	5,249	69.6	27	0.4	284	3.8	198	2.6	404	5.4	1,380	18.3
Western	10,142	7,749	76.4	4	0.0	201	2.0	12	0.1	44	0.4	2,132	21.0
SIXTH CIRCUIT	4,298	1,700	39.6	19	0.4	598	13.9	11	0.3	215	5.0	1,755	40.8
Kentucky													
Eastern	390	203	52.1	3	0.8	68	17.4	0	0.0	10	2.6	106	27.2
Western	388	119	30.7	3	0.8	80	20.6	8	2.1	17	4.4	161	41.5
Michigan													
Eastern	851	365	42.9	1	0.1	51	6.0	0	0.0	31	3.6	403	47.4
Western	242	146	60.3	2	0.8	17	7.0	0	0.0	10	4.1	67	27.7
Ohio													
Northern	662	252	38.1	1	0.2	97	14.7	0	0.0	18	2.7	294	44.4
Southern	560	134	23.9	3	0.5	98	17.5	3	0.5	103	18.4	219	39.1
Tennessee													
Eastern	532	247	46.4	4	0.8	101	19.0	0	0.0	7	1.3	173	32.5
Middle	335	80	23.9	0	0.0	46	13.7	0	0.0	15	4.5	194	57.9
Western	338	154	45.6	2	0.6	40	11.8	0	0.0	4	1.2	138	40.8
SEVENTH CIRCUIT	2,111	787	37.3	5	0.2	214	10.1	0	0.0	71	3.4	1,034	49.0
Illinois													
Central	218	60	27.5	0	0.0	30	13.8	0	0.0	3	1.4	125	57.3
Northern	587	170	29.0	0	0.0	50	8.5	0	0.0	28	4.8	339	57.8
Southern	240	146	60.8	3	1.3	28	11.7	0	0.0	11	4.6	52	21.7
Indiana													
Northern	279	146	52.3	1	0.4	39	14.0	0	0.0	2	0.7	91	32.6
Southern	356	175	49.2	0	0.0	54	15.2	0	0.0	2	0.6	125	35.1
Wisconsin													
Eastern	302	57	18.9	0	0.0	13	4.3	0	0.0	2	0.7	230	76.2
Western	129	33	25.6	1	0.8	0	0.0	0	0.0	23	17.8	72	55.8
EIGHTH CIRCUIT	4,606	2,024	43.9	30	0.7	522	11.3	38	0.8	63	1.4	1,929	41.9
Arkansas													
Eastern	475	233	49.1	0	0.0	39	8.2	0	0.0	0	0.0	203	42.7
Western	162	62	38.3	0	0.0	14	8.6	1	0.6	1	0.6	84	51.9
Iowa													
Northern	313	153	48.9	9	2.9	46	14.7	0	0.0	3	1.0	102	32.6
Southern	343	134	39.1	1	0.3	27	7.9	0	0.0	2	0.6	179	52.2
Minnesota	396	137	34.6	2	0.5	52	13.1	6	1.5	23	5.8	176	44.4
Missouri													
Eastern	988	444	44.9	1	0.1	100	10.1	0	0.0	8	0.8	435	44.0
Western	668	239	35.8	1	0.1	116	17.4	0	0.0	9	1.3	303	45.4
Nebraska	432	220	50.9	1	0.2	10	2.3	26	6.0	4	0.9	171	39.6
North Dakota	325	125	38.5	3	0.9	116	35.7	4	1.2	4	1.2	73	22.5
South Dakota	504	277	55.0	12	2.4	2	0.4	1	0.2	9	1.8	203	40.3

Table 9 (cont.)

CIRCUIT District	TOTAL	WITHIN GUIDELINE		DEPARTURE								VARIANCE	
		RANGE		UPWARD		§5K1.1		§5K3.1		DOWNWARD		N	%
		N	%	N	%	N	%	N	%	N	%	N	%
NINTH CIRCUIT	10,832	3,407	31.5	35	0.3	850	7.8	3,017	27.9	430	4.0	3,093	28.6
Alaska	137	44	32.1	1	0.7	10	7.3	0	0.0	5	3.6	77	56.2
Arizona	4,005	1,485	37.1	10	0.2	95	2.4	1,643	41.0	62	1.5	710	17.7
California													
Central	918	287	31.3	4	0.4	104	11.3	39	4.2	59	6.4	425	46.3
Eastern	471	154	32.7	3	0.6	93	19.7	9	1.9	7	1.5	205	43.5
Northern	364	43	11.8	1	0.3	44	12.1	0	0.0	15	4.1	261	71.7
Southern	2,648	726	27.4	7	0.3	129	4.9	1,273	48.1	241	9.1	272	10.3
Guam	35	15	42.9	0	0.0	9	25.7	0	0.0	0	0.0	11	31.4
Hawaii	142	38	26.8	0	0.0	49	34.5	0	0.0	0	0.0	55	38.7
Idaho	309	118	38.2	0	0.0	51	16.5	9	2.9	12	3.9	119	38.5
Montana	403	140	34.7	2	0.5	82	20.3	0	0.0	12	3.0	167	41.4
Nevada	201	36	17.9	0	0.0	7	3.5	35	17.4	7	3.5	116	57.7
Northern Mariana Islands	17	13	76.5	1	5.9	1	5.9	0	0.0	0	0.0	2	11.8
Oregon	501	103	20.6	4	0.8	97	19.4	0	0.0	4	0.8	293	58.5
Washington													
Eastern	335	101	30.1	1	0.3	73	21.8	4	1.2	5	1.5	151	45.1
Western	346	104	30.1	1	0.3	6	1.7	5	1.4	1	0.3	229	66.2
TENTH CIRCUIT	5,824	3,022	51.9	41	0.7	337	5.8	688	11.8	175	3.0	1,561	26.8
Colorado	375	106	28.3	3	0.8	77	20.5	20	5.3	6	1.6	163	43.5
Kansas	391	165	42.2	3	0.8	46	11.8	14	3.6	17	4.3	146	37.3
New Mexico	2,697	1,723	63.9	22	0.8	73	2.7	496	18.4	94	3.5	289	10.7
Oklahoma													
Eastern	256	168	65.6	2	0.8	17	6.6	0	0.0	2	0.8	67	26.2
Northern	563	319	56.7	7	1.2	51	9.1	0	0.0	32	5.7	154	27.4
Western	583	267	45.8	0	0.0	18	3.1	0	0.0	0	0.0	298	51.1
Utah	778	188	24.2	2	0.3	41	5.3	141	18.1	15	1.9	391	50.3
Wyoming	181	86	47.5	2	1.1	14	7.7	17	9.4	9	5.0	53	29.3
ELEVENTH CIRCUIT	5,480	3,061	55.9	5	0.1	482	8.8	18	0.3	52	0.9	1,862	34.0
Alabama													
Middle	263	130	49.4	0	0.0	23	8.7	1	0.4	2	0.8	107	40.7
Northern	516	339	65.7	0	0.0	57	11.0	1	0.2	4	0.8	115	22.3
Southern	299	174	58.2	0	0.0	54	18.1	5	1.7	5	1.7	61	20.4
Florida													
Middle	1,528	809	52.9	3	0.2	157	10.3	0	0.0	8	0.5	551	36.1
Northern	300	142	47.3	0	0.0	36	12.0	10	3.3	5	1.7	107	35.7
Southern	1,402	814	58.1	1	0.1	69	4.9	0	0.0	10	0.7	508	36.2
Georgia													
Middle	398	273	68.6	0	0.0	18	4.5	0	0.0	5	1.3	102	25.6
Northern	502	176	35.1	0	0.0	34	6.8	1	0.2	11	2.2	280	55.8
Southern	272	204	75.0	1	0.4	34	12.5	0	0.0	2	0.7	31	11.4

¹ Of the 66,662 cases, 626 were excluded because information was missing from the submitted documents that prevented the comparison of the sentence and the guideline range. Descriptions of variables used in this table are provided in Appendix A.

Table 10

**SENTENCE IMPOSED RELATIVE TO THE GUIDELINE RANGE
BY TYPE OF CRIME¹
Fiscal Year 2025**

TYPE OF CRIME	TOTAL	WITHIN GUIDELINE		DEPARTURE								VARIANCE	
		RANGE		UPWARD		\$5K1.1		\$5K3.1		DOWNWARD			
		N	%	N	%	N	%	N	%	N	%	N	%
TOTAL	66,036	33,979	51.5	249	0.4	5,423	8.2	4,012	6.1	1,796	2.7	20,577	31.2
Administration of Justice	559	284	50.8	7	1.3	31	5.5	0	0.0	14	2.5	223	39.9
Antitrust	18	7	38.9	0	0.0	5	27.8	0	0.0	1	5.6	5	27.8
Arson	77	40	51.9	2	2.6	9	11.7	0	0.0	2	2.6	24	31.2
Assault	840	379	45.1	26	3.1	25	3.0	0	0.0	35	4.2	375	44.6
Bribery/Corruption	310	70	22.6	0	0.0	89	28.7	2	0.6	10	3.2	139	44.8
Burglary/Trespass	49	30	61.2	0	0.0	3	6.1	0	0.0	1	2.0	15	30.6
Child Pornography	1,432	541	37.8	4	0.3	26	1.8	0	0.0	43	3.0	818	57.1
Commercialized Vice	88	48	54.5	3	3.4	9	10.2	0	0.0	3	3.4	25	28.4
Drug Possession	90	79	87.8	0	0.0	0	0.0	0	0.0	0	0.0	11	12.2
Drug Trafficking	16,212	4,703	29.0	46	0.3	3,162	19.5	723	4.5	569	3.5	7,009	43.2
Environmental	146	74	50.7	0	0.0	16	11.0	0	0.0	13	8.9	43	29.5
Extortion/Racketeering	57	23	40.4	0	0.0	9	15.8	0	0.0	1	1.8	24	42.1
Firearms	8,035	4,020	50.0	54	0.7	419	5.2	6	0.1	231	2.9	3,305	41.1
Food and Drug	44	32	72.7	0	0.0	0	0.0	0	0.0	0	0.0	12	27.3
Forgery/Counter/Copyright	83	33	39.8	0	0.0	5	6.0	0	0.0	6	7.2	39	47.0
Fraud/Theft/Embezzlement	5,044	2,141	42.4	13	0.3	695	13.8	6	0.1	112	2.2	2,077	41.2
Immigration	24,927	17,407	69.8	44	0.2	190	0.8	3,263	13.1	481	1.9	3,542	14.2
Individual Rights	100	38	38.0	0	0.0	14	14.0	0	0.0	3	3.0	45	45.0
Kidnapping	146	41	28.1	1	0.7	26	17.8	1	0.7	13	8.9	64	43.8
Manslaughter	94	37	39.4	5	5.3	1	1.1	0	0.0	8	8.5	43	45.7
Money Laundering	1,368	380	27.8	4	0.3	322	23.5	7	0.5	60	4.4	595	43.5
Murder	405	159	39.3	7	1.7	83	20.5	2	0.5	24	5.9	130	32.1
National Defense	273	123	45.1	0	0.0	27	9.9	1	0.4	12	4.4	110	40.3
Obscenity/Other Sex Offenses	325	166	51.1	1	0.3	4	1.2	0	0.0	8	2.5	146	44.9
Prison Offenses	412	269	65.3	1	0.2	7	1.7	0	0.0	22	5.3	113	27.4
Robbery	1,248	506	40.5	13	1.0	116	9.3	0	0.0	54	4.3	559	44.8
Sexual Abuse	1,408	607	43.1	16	1.1	57	4.0	1	0.1	53	3.8	674	47.9
Stalking/Harassing	286	122	42.7	2	0.7	6	2.1	0	0.0	6	2.1	150	52.4
Tax	409	101	24.7	0	0.0	61	14.9	0	0.0	10	2.4	237	57.9
Other	1,551	1,519	97.9	0	0.0	6	0.4	0	0.0	1	0.1	25	1.6

¹ Of the 66,662 cases, 626 were excluded because information was missing from the submitted documents that prevented the comparison of the sentence and the guideline range. Descriptions of variables used in this table are provided in Appendix A.

SOURCE: U.S. Sentencing Commission, 2025 Datafile, USSCFY25.

Table 11

SENTENCE IMPOSED RELATIVE TO THE GUIDELINE RANGE BY PRIMARY SENTENCING GUIDELINE¹

Fiscal Year 2025

Guideline	Within Guideline		Departure				Variance	Guideline	Within Guideline		Departure				Variance
	Total	Range	Up	\$5K1.1	\$5K3.1	Down			Total	Range	Up	\$5K1.1	\$5K3.1	Down	
§2A1.1	259	104	1	54	0	15	85	§2D1.8	8	3	0	2	0	0	3
§2A1.2	94	38	6	9	2	7	32	§2D1.9	0	0	0	0	0	0	0
§2A1.3	45	21	4	1	0	3	16	§2D1.10	0	0	0	0	0	0	0
§2A1.4	48	15	1	0	0	5	27	§2D1.11	1	0	0	1	0	0	0
§2A1.5	33	10	0	13	0	2	8	§2D1.12	2	0	0	1	0	0	1
§2A2.1	193	86	3	19	0	5	80	§2D1.13	0	0	0	0	0	0	0
§2A2.2	555	239	22	4	0	29	261	§2D1.14	0	0	0	0	0	0	0
§2A2.3	47	31	1	0	0	0	15	§2D2.1	57	49	0	0	0	0	8
§2A2.4	212	127	3	0	0	6	76	§2D2.2	25	21	0	1	0	0	3
§2A3.1	135	55	1	4	0	9	66	§2D2.3	0	0	0	0	0	0	0
§2A3.2	30	20	3	0	0	0	7	§2D3.1	4	4	0	0	0	0	0
§2A3.3	11	2	0	1	0	1	7	§2D3.2	0	0	0	0	0	0	0
§2A3.4	37	15	4	0	0	1	17	§2D3.3	0	0	0	0	0	0	0
§2A3.5	291	155	0	2	0	8	126	§2D3.4	0	0	0	0	0	0	0
§2A4.1	141	41	1	25	1	13	60	§2D3.5	0	0	0	0	0	0	0
§2A4.2	0	0	0	0	0	0	0	§2E1.1	10	4	0	1	0	1	4
§2A5.1	0	0	0	0	0	0	0	§2E1.2	2	2	0	0	0	0	0
§2A5.2	29	17	0	0	0	0	12	§2E1.3	0	0	0	0	0	0	0
§2A5.3	0	0	0	0	0	0	0	§2E1.4	5	2	0	0	0	0	3
§2A6.1	188	85	1	2	0	5	95	§2E1.5	0	0	0	0	0	0	0
§2A6.2	90	34	1	4	0	1	50	§2E2.1	3	0	0	2	0	0	1
§2B1.1	4,803	1,974	13	677	6	105	2,028	§2E3.1	66	39	3	6	0	3	15
§2B1.2	0	0	0	0	0	0	0	§2E3.2	0	0	0	0	0	0	0
§2B1.3	0	0	0	0	0	0	0	§2E3.3	0	0	0	0	0	0	0
§2B1.4	28	1	0	5	0	3	19	§2E4.1	3	1	0	2	0	0	0
§2B1.5	18	6	0	3	0	0	9	§2E5.1	2	1	0	0	0	0	1
§2B1.6 ²	46	43	0	3	0	0	0	§2E5.2	0	0	0	0	0	0	0
§2B2.1	34	15	0	3	0	1	15	§2E5.3	0	0	0	0	0	0	0
§2B2.2	0	0	0	0	0	0	0	§2E5.4	0	0	0	0	0	0	0
§2B2.3	12	12	0	0	0	0	0	§2E5.5	0	0	0	0	0	0	0
§2B3.1	1,233	502	13	115	0	53	550	§2E5.6	0	0	0	0	0	0	0
§2B3.2	21	9	0	2	0	0	10	§2F1.1	0	0	0	0	0	0	0
§2B3.3	5	2	0	0	0	0	3	§2F1.2	0	0	0	0	0	0	0
§2B4.1	102	26	0	46	0	0	30	§2G1.1	42	15	1	4	0	2	20
§2B5.1	40	21	0	2	0	5	12	§2G1.2	0	0	0	0	0	0	0
§2B5.2	0	0	0	0	0	0	0	§2G1.3	367	201	6	19	1	7	133
§2B5.3	40	10	0	3	0	1	26	§2G2.1	798	307	1	31	0	32	427
§2B5.4	0	0	0	0	0	0	0	§2G2.2	1,429	540	4	26	0	43	816
§2B6.1	6	0	0	4	0	0	2	§2G2.3	0	0	0	0	0	0	0
§2C1.1	203	41	0	43	2	10	107	§2G2.4	0	0	0	0	0	0	0
§2C1.2	1	0	0	0	0	0	1	§2G2.5	0	0	0	0	0	0	0
§2C1.3	2	2	0	0	0	0	0	§2G2.6	0	0	0	0	0	0	0
§2C1.4	0	0	0	0	0	0	0	§2G3.1	28	8	1	2	0	0	17
§2C1.5	0	0	0	0	0	0	0	§2G3.2	0	0	0	0	0	0	0
§2C1.6	0	0	0	0	0	0	0	§2H1.1	64	16	0	12	0	2	34
§2C1.7	0	0	0	0	0	0	0	§2H1.2	0	0	0	0	0	0	0
§2C1.8	0	0	0	0	0	0	0	§2H1.3	0	0	0	0	0	0	0
§2D1.1	15,944	4,610	46	3,133	723	552	6,880	§2H1.4	0	0	0	0	0	0	0
§2D1.2	177	75	0	19	0	15	68	§2H1.5	0	0	0	0	0	0	0
§2D1.3	0	0	0	0	0	0	0	§2H2.1	8	5	0	0	0	0	3
§2D1.4	0	0	0	0	0	0	0	§2H3.1	3	3	0	0	0	0	0
§2D1.5	9	3	0	4	0	0	2	§2H3.2	1	1	0	0	0	0	0
§2D1.6	0	0	0	0	0	0	0	§2H3.3	7	7	0	0	0	0	0
§2D1.7	1	1	0	0	0	0	0	§2H4.1	16	6	0	2	0	1	7

Table 11 (cont.)

Guideline	Within Guideline		Departure					Variance	Guideline	Within Guideline		Departure					Variance
	Total	Range	Up	§5K1.1	§5K3.1	Down	Total			Range	Up	§5K1.1	§5K3.1	Down			
§2H4.2	0	0	0	0	0	0	0	§2M5.2	169	55	0	17	1	6	90		
§2J1.1	0	0	0	0	0	0	0	§2M5.3	11	2	0	1	0	2	6		
§2J1.2	114	48	1	16	0	1	48	§2M6.1	5	1	0	2	0	0	2		
§2J1.3	13	4	0	0	0	1	8	§2M6.2	1	1	0	0	0	0	0		
§2J1.4	9	6	0	0	0	0	3	§2N1.1	12	1	0	0	0	0	11		
§2J1.5	1	0	0	0	0	0	1	§2N1.2	0	0	0	0	0	0	0		
§2J1.6	29	19	0	0	0	2	8	§2N1.3	1	1	0	0	0	0	0		
§2J1.7	0	0	0	0	0	0	0	§2N2.1	26	25	0	0	0	0	1		
§2J1.8	0	0	0	0	0	0	0	§2N3.1	1	1	0	0	0	0	0		
§2J1.9	0	0	0	0	0	0	0	§2P1.1	253	183	1	3	0	5	61		
§2K1.1	2	2	0	0	0	0	0	§2P1.2	121	65	0	4	0	11	41		
§2K1.2	0	0	0	0	0	0	0	§2P1.3	6	2	0	0	0	0	4		
§2K1.3	15	5	0	2	0	0	8	§2P1.4	0	0	0	0	0	0	0		
§2K1.4	76	40	2	9	0	2	23	§2Q1.1	2	0	0	1	0	1	0		
§2K1.5	1	0	0	0	0	0	1	§2Q1.2	30	9	0	6	0	0	15		
§2K1.6	0	0	0	0	0	0	0	§2Q1.3	11	5	0	2	0	3	1		
§2K1.7	0	0	0	0	0	0	0	§2Q1.4	1	0	0	0	0	0	1		
§2K2.1	7,705	3,797	48	399	6	228	3,227	§2Q1.5	0	0	0	0	0	0	0		
§2K2.2	0	0	0	0	0	0	0	§2Q1.6	0	0	0	0	0	0	0		
§2K2.3	0	0	0	0	0	0	0	§2Q2.1	90	51	0	6	0	8	25		
§2K2.4 ³	252	193	6	14	0	0	39	§2Q2.2	0	0	0	0	0	0	0		
§2K2.5	9	7	0	0	0	0	2	§2R1.1	18	7	0	5	0	1	5		
§2K2.6	0	0	0	0	0	0	0	§2S1.1	1,170	287	1	302	6	50	524		
§2K3.1	0	0	0	0	0	0	0	§2S1.2	0	0	0	0	0	0	0		
§2K3.2	0	0	0	0	0	0	0	§2S1.3	185	89	3	19	1	9	64		
§2L1.1	3,956	2,099	7	142	926	55	727	§2S1.4	0	0	0	0	0	0	0		
§2L1.2	18,200	12,985	35	36	2,078	415	2,651	§2T1.1	212	54	0	27	0	8	123		
§2L1.3	0	0	0	0	0	0	0	§2T1.2	0	0	0	0	0	0	0		
§2L2.1	53	31	0	6	0	5	11	§2T1.3	0	0	0	0	0	0	0		
§2L2.2	529	468	0	2	2	0	57	§2T1.4	112	26	0	23	0	0	63		
§2L2.3	0	0	0	0	0	0	0	§2T1.5	0	0	0	0	0	0	0		
§2L2.4	0	0	0	0	0	0	0	§2T1.6	63	12	0	5	0	2	44		
§2L2.5	0	0	0	0	0	0	0	§2T1.7	0	0	0	0	0	0	0		
§2M1.1	0	0	0	0	0	0	0	§2T1.8	0	0	0	0	0	0	0		
§2M2.1	0	0	0	0	0	0	0	§2T1.9	7	2	0	2	0	0	3		
§2M2.2	0	0	0	0	0	0	0	§2T2.1	0	0	0	0	0	0	0		
§2M2.3	0	0	0	0	0	0	0	§2T2.2	0	0	0	0	0	0	0		
§2M2.4	0	0	0	0	0	0	0	§2T3.1	12	5	0	4	0	0	3		
§2M3.1	1	0	0	0	0	0	1	§2T3.2	0	0	0	0	0	0	0		
§2M3.2	3	0	0	0	0	2	1	§2T4.1	0	0	0	0	0	0	0		
§2M3.3	2	0	0	1	0	0	1	§2X1.1	11	2	0	5	0	0	4		
§2M3.4	0	0	0	0	0	0	0	§2X2.1	0	0	0	0	0	0	0		
§2M3.5	0	0	0	0	0	0	0	§2X3.1	73	20	0	16	0	3	34		
§2M3.6	0	0	0	0	0	0	0	§2X4.1	162	72	3	15	0	3	69		
§2M3.7	0	0	0	0	0	0	0	§2X5.1	0	0	0	0	0	0	0		
§2M3.8	0	0	0	0	0	0	0	§2X5.2	216	213	0	0	0	0	3		
§2M3.9	0	0	0	0	0	0	0	§2X6.1	0	0	0	0	0	0	0		
§2M4.1	0	0	0	0	0	0	0	§2X7.1	0	0	0	0	0	0	0		
§2M5.1	17	3	0	5	0	2	7	§2X7.2	0	0	0	0	0	0	0		
TOTAL									62,082	30,581	247	5,409	3,755	1,771	20,319		

¹ Of the 66,662 cases, 4,580 were excluded due to one or both of the following reasons: information was missing from the submitted documents that prevented the comparison of the sentence and the guideline range (626) or missing guideline applied (4,565). Descriptions of variables used in this table are provided in Appendix A.

² In these cases, the sentenced individual was convicted of violating 18 U.S.C. § 1028A (Aggravated Identity Theft) as the only count or counts of conviction. The *Guidelines Manual* provides punishment for this type of offense under §2B1.6.

³ In these cases, the sentenced individual was convicted of violating 18 U.S.C. § 924(c) (Use of Firearm, Armor-Piercing Ammunition, or Explosives During or in Relation to Certain Crimes) as the only count or counts of conviction. The *Guidelines Manual* provides punishment for this type of offense under §2K2.4.

Table 12

ATTRIBUTION CATEGORY FOR SENTENCES OUTSIDE OF THE GUIDELINE RANGE¹
Fiscal Year 2025

	TOTAL CASES	Pursuant to a Plea Agreement									
		§5K1.1 Substantial Assistance ²		§5K3.1 Early Disposition ²		Binding Plea Accepted by Court		Plea with Departure Court Finds Reasonable		Plea States Gov't Will Not Oppose	
		N	%	N	%	N	%	N	%	N	%
TOTAL	32,057	5,441	17.0	4,066	12.7	4,649	14.5	5,692	17.8	380	1.2
Departures	11,480	5,423	47.2	4,059	35.4	2,559	22.3	3,783	33.0	176	1.5
Upward Departure	249	0	0.0	0	0.0	68	27.3	40	16.1	0	0.0
Downward Departure											
§5K1.1 Substantial Assistance	5,423	5,423	100.0	47	0.9	159	2.9	1,171	21.6	17	0.3
§5K3.1 Early Disposition Program	4,012	0	0.0	4,012	100.0	2,007	50.0	2,195	54.7	139	3.5
Other Government Motion	863	0	0.0	0	0.0	325	37.7	377	43.7	20	2.3
Non-Government Departure	933	0	0.0	0	0.0	0	0.0	0	0.0	0	0.0
Variances	20,577	18	0.1	7	0.0	2,090	10.2	1,909	9.3	204	1.0
Upward Variance	2,890	18	0.6	7	0.2	245	8.5	149	5.2	0	0.0
Downward Variance											
Government Motion	6,338	0	0.0	0	0.0	1,845	29.1	1,760	27.8	204	3.2
Non-Government Variance	11,349	0	0.0	0	0.0	0	0.0	0	0.0	0	0.0

Table 12 (cont.)

	Pursuant to a Motion Not in a Plea Agreement											
	Other Government Motion		Defense Motion/Gov't Did Not Object		Defense Motion/Gov't Did Object		Joint Motion		Other than a Plea/Motion by Parties		No Information Available	
	N	%	N	%	N	%	N	%	N	%	N	%
TOTAL	5,081	15.8	4,474	14.0	7,327	22.9	2,134	6.7	5,506	17.2	2,046	6.4
Departures	4,071	35.5	1,643	14.3	1,455	12.7	795	6.9	877	7.6	174	1.5
Upward Departure	70	28.1	2	0.8	3	1.2	8	3.2	64	25.7	20	8.0
Downward Departure												
§5K1.1 Substantial Assistance	3,726	68.7	663	12.2	742	13.7	434	8.0	452	8.3	0	0.0
§5K3.1 Early Disposition Program	194	4.8	454	11.3	399	9.9	215	5.4	101	2.5	0	0.0
Other Government Motion	81	9.4	75	8.7	86	10.0	138	16.0	57	6.6	26	3.0
Non-Government Departure	0	0.0	449	48.1	225	24.1	0	0.0	203	21.8	128	13.7
Variations	1,010	4.9	2,831	13.8	5,872	28.5	1,339	6.5	4,629	22.5	1,872	9.1
Upward Variance	400	13.8	8	0.3	9	0.3	23	0.8	1,792	62.0	308	10.7
Downward Variance												
Government Motion	610	9.6	465	7.3	317	5.0	1,316	20.8	559	8.8	172	2.7
Non-Government Variance	0	0.0	2,358	20.8	5,546	48.9	0	0.0	2,278	20.1	1,392	12.3

¹ Multiple attributions may be made on the Statement of Reasons (SOR). Therefore, the numbers reported in this table may exceed the number of total cases. For example, among SORs with an attribution, 11,553 cases indicated more than one attribution. Only sentenced individuals whose sentence is outside the guideline range are included in this table. Descriptions of variables used in this table are provided in Appendix A.

² For cases in which the court submitted a SOR form with a revision date of 11/15 or later, information for these categories was taken from Part V.C. of the SOR. For cases in which the court submitted the prior version of the SOR form, the information was taken from Part V.B. of the SOR form.

Table 13

**EXTENT OF UPWARD DEPARTURES
BY TYPE OF CRIME¹
Fiscal Year 2025**

TYPE OF CRIME	N	Mean			Median		
		Sentence In Months	Increase In Months	Percent Increase	Sentence In Months	Increase In Months	Percent Increase
TOTAL	246	107	39	96.3	76	23	47.2
Administration of Justice	7	43	29	165.8	18	12	185.7
Antitrust	0	--	--	--	--	--	--
Arson	2	--	--	--	--	--	--
Assault	26	105	38	65.9	87	25	46.3
Bribery/Corruption	0	--	--	--	--	--	--
Burglary/Trespass	0	--	--	--	--	--	--
Child Pornography	4	110	25	37.5	100	25	38.3
Commercialized Vice	3	18	3	15.9	15	1	7.1
Drug Possession	0	--	--	--	--	--	--
Drug Trafficking	46	125	49	179.8	98	33	71.1
Environmental	0	--	--	--	--	--	--
Extortion/Racketeering	0	--	--	--	--	--	--
Firearms	54	96	32	69.3	84	22	35.1
Food and Drug	0	--	--	--	--	--	--
Forgery/Counter/Copyright	0	--	--	--	--	--	--
Fraud/Theft/Embezzlement	13	78	36	101.4	46	10	50.0
Immigration	44	30	12	76.1	24	6	38.1
Individual Rights	0	--	--	--	--	--	--
Kidnapping	1	--	--	--	--	--	--
Manslaughter	5	144	69	90.9	180	93	106.9
Money Laundering	3	42	31	370.8	48	42	400.0
Murder	6	404	140	61.2	420	148	63.2
National Defense	0	--	--	--	--	--	--
Obscenity/Other Sex Offenses	1	--	--	--	--	--	--
Prison Offenses	1	--	--	--	--	--	--
Robbery	12	218	63	41.6	240	63	35.2
Sexual Abuse	16	196	76	72.4	180	60	56.0
Stalking/Harassing	2	--	--	--	--	--	--
Tax	0	--	--	--	--	--	--
Other	0	--	--	--	--	--	--

¹ Of the 66,662 cases, in 249 the sentence was an upward departure from the guideline range. Due to an inability to calculate the extent of departure for cases with a sentence of life, two cases were excluded from this table. Also, one case was excluded due to several logical criteria. Sentences greater than 470 months and probation were included in the sentence average computations as 470 months and zero months, respectively. The information in this table includes conditions of confinement as described in USSG §5C1.1. Descriptions of variables used in this table are provided in Appendix A.

Table 14

**EXTENT OF UPWARD VARIANCES
BY TYPE OF CRIME¹
Fiscal Year 2025**

TYPE OF CRIME	N	Mean			Median		
		Sentence In Months	Increase In Months	Percent Increase	Sentence In Months	Increase In Months	Percent Increase
TOTAL	2,863	59	19	67.1	30	9	42.9
Administration of Justice	30	37	13	59.1	34	10	50.0
Antitrust	0	--	--	--	--	--	--
Arson	8	78	14	34.4	84	15	31.9
Assault	59	141	60	83.7	96	30	46.3
Bribery/Corruption	2	--	--	--	--	--	--
Burglary/Trespass	3	76	27	55.1	60	27	53.9
Child Pornography	46	192	60	50.0	180	42	40.6
Commercialized Vice	2	--	--	--	--	--	--
Drug Possession	3	24	15	140.0	12	6	100.0
Drug Trafficking	261	116	35	81.5	100	23	30.0
Environmental	0	--	--	--	--	--	--
Extortion/Racketeering	3	139	53	84.5	84	47	81.8
Firearms	467	88	27	56.7	78	18	33.3
Food and Drug	0	--	--	--	--	--	--
Forgery/Counter/Copyright	6	52	19	55.9	43	12	39.4
Fraud/Theft/Embezzlement	114	67	23	83.4	49	13	46.3
Immigration	1,601	22	8	65.3	15	5	50.0
Individual Rights	3	86	34	72.4	36	12	66.7
Kidnapping	4	275	90	64.4	233	108	51.1
Manslaughter	30	123	52	79.8	99	33	50.9
Money Laundering	25	140	49	58.3	108	21	63.0
Murder	16	338	66	30.2	360	55	15.6
National Defense	3	57	22	56.3	27	9	50.0
Obscenity/Other Sex Offenses	24	58	33	227.8	47	17	76.6
Prison Offenses	9	40	22	165.8	36	20	100.0
Robbery	59	152	36	34.5	144	26	25.0
Sexual Abuse	49	175	44	52.8	168	45	33.3
Stalking/Harassing	28	57	20	68.4	56	19	48.2
Tax	5	41	14	48.7	48	11	29.7
Other	3	24	16	200.0	24	18	200.0

¹ Of the 66,662 cases, in 2,890 the sentence was a variance above the guideline range. Due to an inability to calculate the extent of departure for cases with a sentence of life, five cases were excluded from this table. Also, 22 cases were excluded due to several logical criteria. Sentences greater than 470 months and probation were included in the sentence average computations as 470 months and zero months, respectively. The information in this table includes conditions of confinement as described in USSG §5C1.1. Descriptions of variables used in this table are provided in Appendix A.

Table 15

**EXTENT OF §5K1.1 SUBSTANTIAL ASSISTANCE DEPARTURES
BY TYPE OF CRIME¹
Fiscal Year 2025**

TYPE OF CRIME	N	Mean			Median		
		Sentence In Months	Decrease In Months	Percent Decrease	Sentence In Months	Decrease In Months	Percent Decrease
TOTAL	5,283	54	54	56.0	36	37	50.0
Administration of Justice	31	2	13	89.2	0	12	100.0
Antitrust	5	2	6	76.0	0	8	100.0
Arson	9	26	35	58.7	24	35	70.0
Assault	18	64	118	55.2	46	45	44.8
Bribery/Corruption	89	12	28	75.4	4	19	86.7
Burglary/Trespass	3	5	9	72.2	0	10	99.8
Child Pornography	24	106	61	42.8	102	56	42.6
Commercialized Vice	9	1	8	84.7	0	7	100.0
Drug Possession	0	--	--	--	--	--	--
Drug Trafficking	3,098	68	64	51.5	60	49	47.5
Environmental	16	2	12	92.7	0	8	99.9
Extortion/Racketeering	9	25	41	80.9	0	37	99.9
Firearms	419	34	30	55.8	23	21	49.0
Food and Drug	0	--	--	--	--	--	--
Forgery/Counter/Copyright	5	20	22	56.4	8	22	47.8
Fraud/Theft/Embezzlement	694	16	31	68.9	10	21	70.7
Immigration	189	19	15	49.5	12	12	44.6
Individual Rights	11	36	35	53.2	21	29	35.0
Kidnapping	22	118	101	47.7	121	104	49.0
Manslaughter	1	--	--	--	--	--	--
Money Laundering	305	40	65	65.2	24	40	62.6
Murder	50	112	128	53.2	120	122	54.4
National Defense	27	18	45	69.9	12	37	70.3
Obscenity/Other Sex Offenses	4	21	8	30.7	20	9	21.9
Prison Offenses	7	7	9	61.7	10	5	60.9
Robbery	113	72	62	48.8	60	51	45.3
Sexual Abuse	52	144	86	41.9	114	67	41.9
Stalking/Harassing	6	2	20	91.6	0	24	99.8
Tax	61	13	21	76.8	0	18	99.7
Other	6	35	41	65.6	29	38	66.8

¹ Of the 66,662 cases, in 5,423 the sentenced individual received a §5K1.1 substantial assistance departure below the guideline range. Due to an inability to calculate the extent of departure for cases with a guideline minimum of life, 81 cases were excluded from this table. Also, 59 cases were excluded due to several logical criteria. Sentences greater than 470 months and probation were included in the sentence average computations as 470 months and zero months, respectively. The information in this table includes conditions of confinement as described in USSG §5C1.1. Descriptions of variables used in this table are provided in Appendix A.

Table 16

**EXTENT OF §5K3.1 EARLY DISPOSITION PROGRAM DEPARTURES
BY TYPE OF CRIME¹
Fiscal Year 2025**

TYPE OF CRIME	N	Mean			Median		
		Sentence In Months	Decrease In Months	Percent Decrease	Sentence In Months	Decrease In Months	Percent Decrease
TOTAL	4,006	12	13	50.7	8	6	47.4
Administration of Justice	0	--	--	--	--	--	--
Antitrust	0	--	--	--	--	--	--
Arson	0	--	--	--	--	--	--
Assault	0	--	--	--	--	--	--
Bribery/Corruption	2	--	--	--	--	--	--
Burglary/Trespass	0	--	--	--	--	--	--
Child Pornography	0	--	--	--	--	--	--
Commercialized Vice	0	--	--	--	--	--	--
Drug Possession	0	--	--	--	--	--	--
Drug Trafficking	723	23	40	63.6	20	36	63.2
Environmental	0	--	--	--	--	--	--
Extortion/Racketeering	0	--	--	--	--	--	--
Firearms	6	13	14	64.2	6	14	68.8
Food and Drug	0	--	--	--	--	--	--
Forgery/Counter/Copyright	0	--	--	--	--	--	--
Fraud/Theft/Embezzlement	6	7	16	76.8	0	11	100.0
Immigration	3,257	9	7	47.7	6	6	41.8
Individual Rights	0	--	--	--	--	--	--
Kidnapping	1	--	--	--	--	--	--
Manslaughter	0	--	--	--	--	--	--
Money Laundering	7	40	70	66.4	13	57	81.4
Murder	2	--	--	--	--	--	--
National Defense	1	--	--	--	--	--	--
Obscenity/Other Sex Offenses	0	--	--	--	--	--	--
Prison Offenses	0	--	--	--	--	--	--
Robbery	0	--	--	--	--	--	--
Sexual Abuse	1	--	--	--	--	--	--
Stalking/Harassing	0	--	--	--	--	--	--
Tax	0	--	--	--	--	--	--
Other	0	--	--	--	--	--	--

¹ Of the 66,662 cases, in 4,012 the sentenced individual received a §5K3.1 early disposition program departure below the guideline range. Of these, six cases were excluded due to several logical criteria. Sentences greater than 470 months and probation were included in the sentence average computations as 470 months and zero months, respectively. The information in this table includes conditions of confinement as described in USSG §5C1.1. Descriptions of variables used in this table are provided in Appendix A.

Table 17

**EXTENT OF OTHER DOWNWARD DEPARTURES
BY TYPE OF CRIME¹
Fiscal Year 2025**

TYPE OF CRIME	N	Mean			Median		
		Sentence In Months	Decrease In Months	Percent Decrease	Sentence In Months	Decrease In Months	Percent Decrease
TOTAL	1,757	46	31	44.5	24	16	40.0
Administration of Justice	14	5	9	64.7	5	8	73.9
Antitrust	1	--	--	--	--	--	--
Arson	2	--	--	--	--	--	--
Assault	35	54	18	34.8	30	13	27.3
Bribery/Corruption	10	8	27	84.7	0	15	99.8
Burglary/Trespass	1	--	--	--	--	--	--
Child Pornography	40	95	43	34.7	72	34	29.4
Commercialized Vice	3	3	10	80.0	2	9	80.0
Drug Possession	0	--	--	--	--	--	--
Drug Trafficking	561	70	50	43.7	60	34	41.5
Environmental	13	5	16	80.0	1	15	87.5
Extortion/Racketeering	1	--	--	--	--	--	--
Firearms	231	36	18	39.1	30	12	29.8
Food and Drug	0	--	--	--	--	--	--
Forgery/Counter/Copyright	6	14	14	66.2	2	11	75.0
Fraud/Theft/Embezzlement	111	22	22	60.8	12	13	55.6
Immigration	480	14	11	42.5	12	8	40.0
Individual Rights	3	10	32	70.7	8	25	75.8
Kidnapping	13	137	69	33.5	120	58	36.4
Manslaughter	8	33	19	47.7	30	15	39.6
Money Laundering	55	37	45	57.3	21	21	58.8
Murder	19	188	84	32.2	204	68	28.7
National Defense	12	50	55	53.9	28	29	59.9
Obscenity/Other Sex Offenses	8	11	9	52.7	9	9	50.6
Prison Offenses	22	10	6	42.3	9	6	33.3
Robbery	53	76	26	30.0	68	24	26.3
Sexual Abuse	38	133	94	43.9	128	79	41.7
Stalking/Harassing	6	13	14	61.6	5	14	78.1
Tax	10	8	12	62.0	6	8	58.3
Other	1	--	--	--	--	--	--

¹ Of the 66,662 cases, in 1,796 the sentence was a downward departure from the guideline range, either due to a government motion for a departure (863) or a non-government departure (933). Due to an inability to calculate the extent of departure for cases with a guideline minimum of life, 22 cases were excluded from this table. Also, 17 cases were excluded due to several logical criteria. Sentences greater than 470 months and probation were included in the sentence average computations as 470 months and zero months, respectively. The information in this table includes conditions of confinement as described in USSG §5C1.1. Descriptions of variables used in this table are provided in Appendix A.

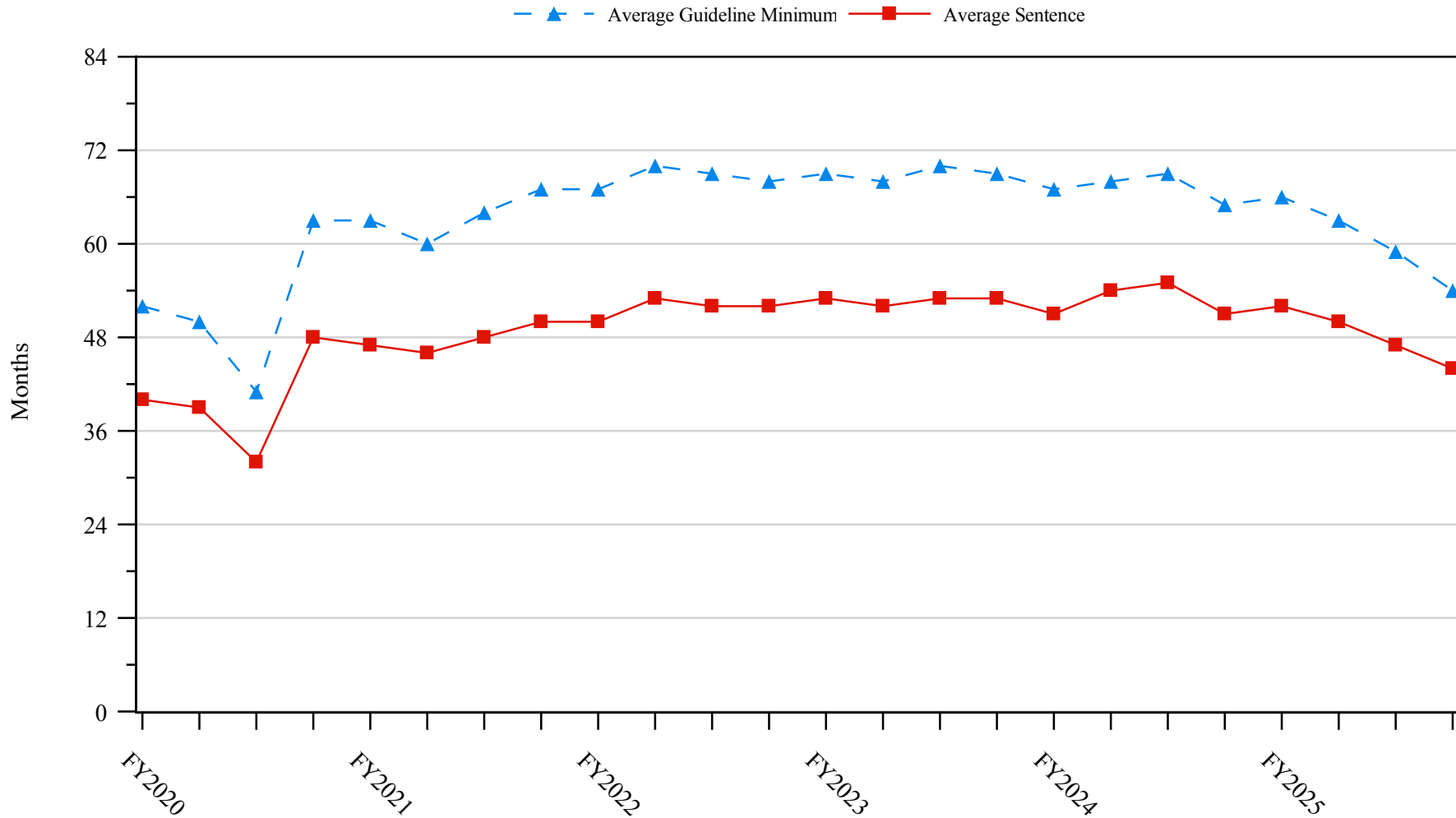
Table 18

**EXTENT OF DOWNWARD VARIANCES
BY TYPE OF CRIME¹
Fiscal Year 2025**

TYPE OF CRIME	N	Mean			Median		
		Sentence In Months	Decrease In Months	Percent Decrease	Sentence In Months	Decrease In Months	Percent Decrease
TOTAL	17,157	56	30	42.8	36	17	33.3
Administration of Justice	193	7	10	66.6	1	8	88.9
Antitrust	5	5	8	69.4	6	4	77.8
Arson	16	33	27	57.6	23	26	49.8
Assault	301	44	23	44.3	24	15	37.1
Bribery/Corruption	136	19	20	57.9	12	12	55.6
Burglary/Trespass	12	10	14	67.1	9	13	73.5
Child Pornography	744	87	47	36.6	72	37	33.3
Commercialized Vice	21	6	9	73.1	1	8	93.4
Drug Possession	8	0	3	93.3	0	2	100.0
Drug Trafficking	6,605	82	42	38.0	70	29	31.0
Environmental	43	3	11	85.3	0	8	100.0
Extortion/Racketeering	21	32	19	41.1	24	9	30.0
Firearms	2,819	37	19	42.4	27	12	31.8
Food and Drug	12	12	35	74.1	9	31	82.1
Forgery/Counter/Copyright	33	7	20	76.5	2	12	94.7
Fraud/Theft/Embezzlement	1,939	20	17	56.6	12	11	49.9
Immigration	1,932	13	8	42.8	9	6	33.3
Individual Rights	40	32	19	53.6	12	12	46.4
Kidnapping	47	124	57	34.7	120	48	30.0
Manslaughter	13	35	25	55.4	15	18	50.0
Money Laundering	545	50	34	46.8	27	17	37.9
Murder	55	178	80	34.6	192	60	26.7
National Defense	105	23	26	52.8	20	18	47.8
Obscenity/Other Sex Offenses	121	11	9	49.5	12	8	37.0
Prison Offenses	104	10	9	47.7	8	6	45.6
Robbery	486	88	27	28.0	80	21	21.5
Sexual Abuse	434	174	71	30.5	180	60	26.7
Stalking/Harassing	117	15	15	56.5	12	11	47.8
Tax	228	12	12	61.1	8	11	55.6
Other	22	9	14	66.1	3	6	68.7

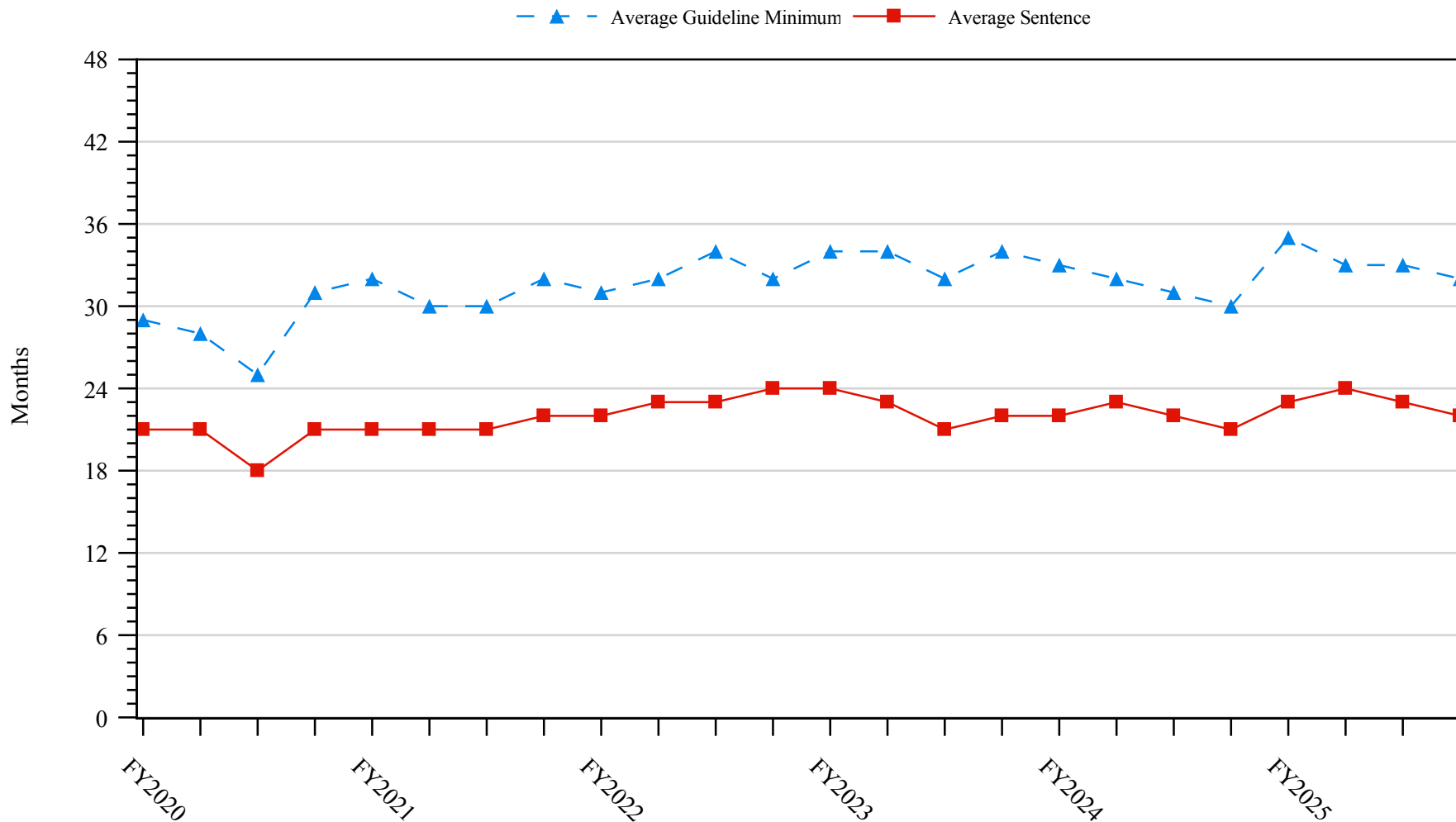
¹ Of the 66,662 cases, in 17,687 the sentence was a variance below the guideline range, either due to a government motion for a variance (6,338) or a non-government variance (11,349). Due to an inability to calculate the extent of departure for cases with a guideline minimum of life, 238 cases were excluded from this table. Also, 292 cases were excluded due to several logical criteria. Sentences greater than 470 months and probation were included in the sentence average computations as 470 months and zero months, respectively. The information in this table includes conditions of confinement as described in USSG §5C1.1. Descriptions of variables used in this table are provided in Appendix A.

Figure 5
SENTENCE LENGTH AND GUIDELINE MINIMUM QUARTERLY DATA
FOR SENTENCED INDIVIDUALS¹
Fiscal Years 2020 - 2025



¹ Cases with guideline minimums of life or probation were included in the guideline minimum average computations as 470 months and zero months, respectively. Cases with sentences of 470 months or greater (including life) or probation were included in the sentence average computations as 470 months and zero months, respectively. The information presented in this figure includes conditions of confinement as described in USSG §5C1.1. Guideline minimums account for applicable statutory mandatory penalties. Descriptions of variables used in this figure are provided in Appendix A.

Figure 6
SENTENCE LENGTH AND GUIDELINE MINIMUM QUARTERLY DATA
FOR INDIVIDUALS SENTENCED UNDER §2B1.1 (THEFT, PROPERTY DESTRUCTION, AND FRAUD)¹
Fiscal Years 2020 - 2025

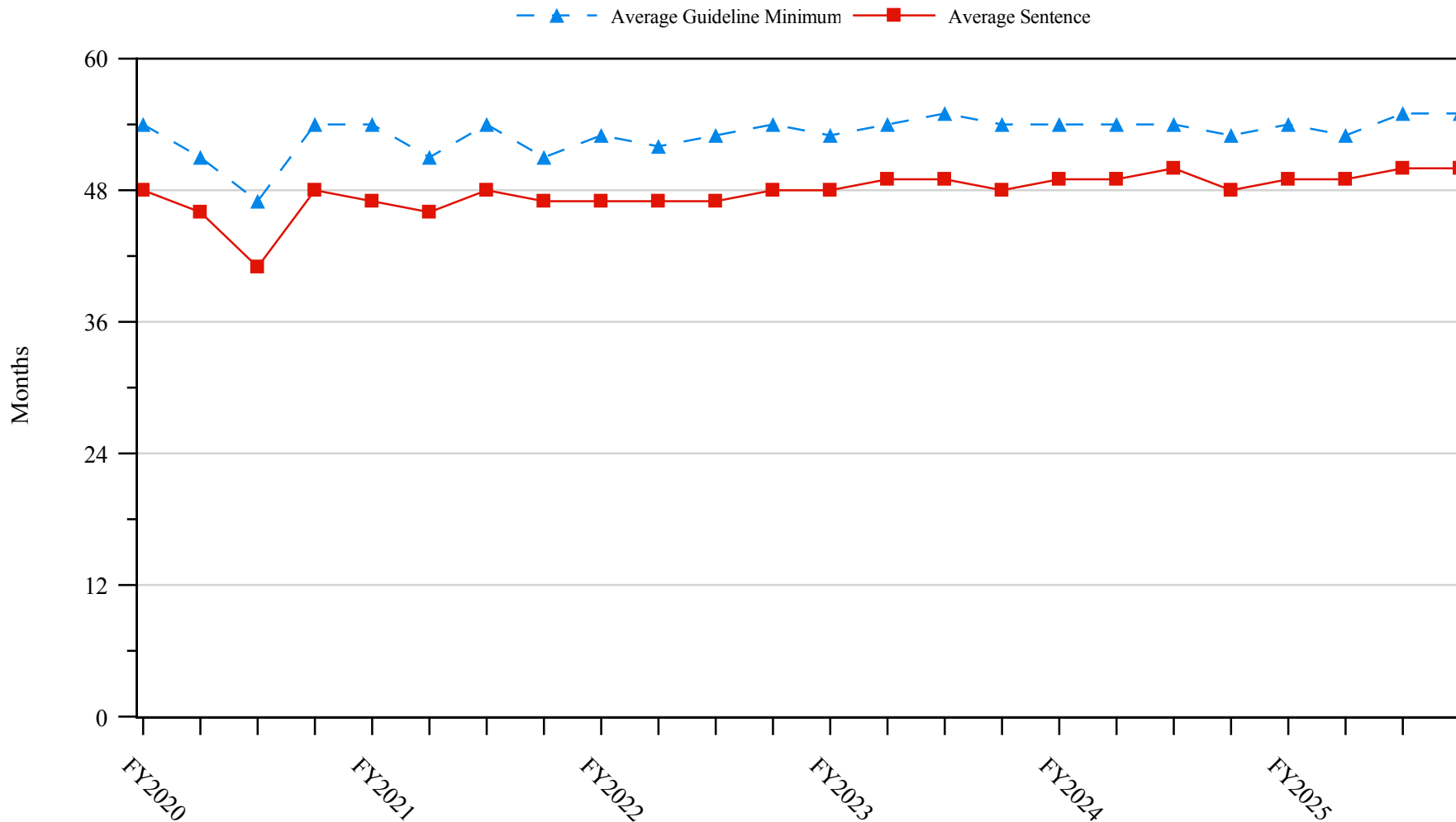


¹ Figure includes only cases with a primary sentencing guideline of USSG §2B1.1 (Larceny, Embezzlement, and Other Forms of Theft; Offenses Involving Stolen Property; Property Damage or Destruction; Fraud and Deceit; Forgery; Offenses Involving Altered or Counterfeit Instruments Other than Counterfeit Bearer Obligations of the United States). Additionally, cases with an amendment year prior to 2001 were excluded from this figure because prior to this time fraud cases were reported separately as USSG §2F1.1. Cases with guideline minimums of life or probation were included in the guideline minimum average computations as 470 months and zero months, respectively. Cases with sentences of 470 months or greater (including life) or probation were included in the sentence average computations as 470 months and zero months, respectively. The information presented in this figure includes conditions of confinement as described in USSG §5C1.1. Guideline minimums account for applicable statutory mandatory penalties. Descriptions of variables used in this figure are provided in Appendix A.

SOURCE: U.S. Sentencing Commission, 2020 - 2025 Datafiles, USSCFY20 - USSCFY25.

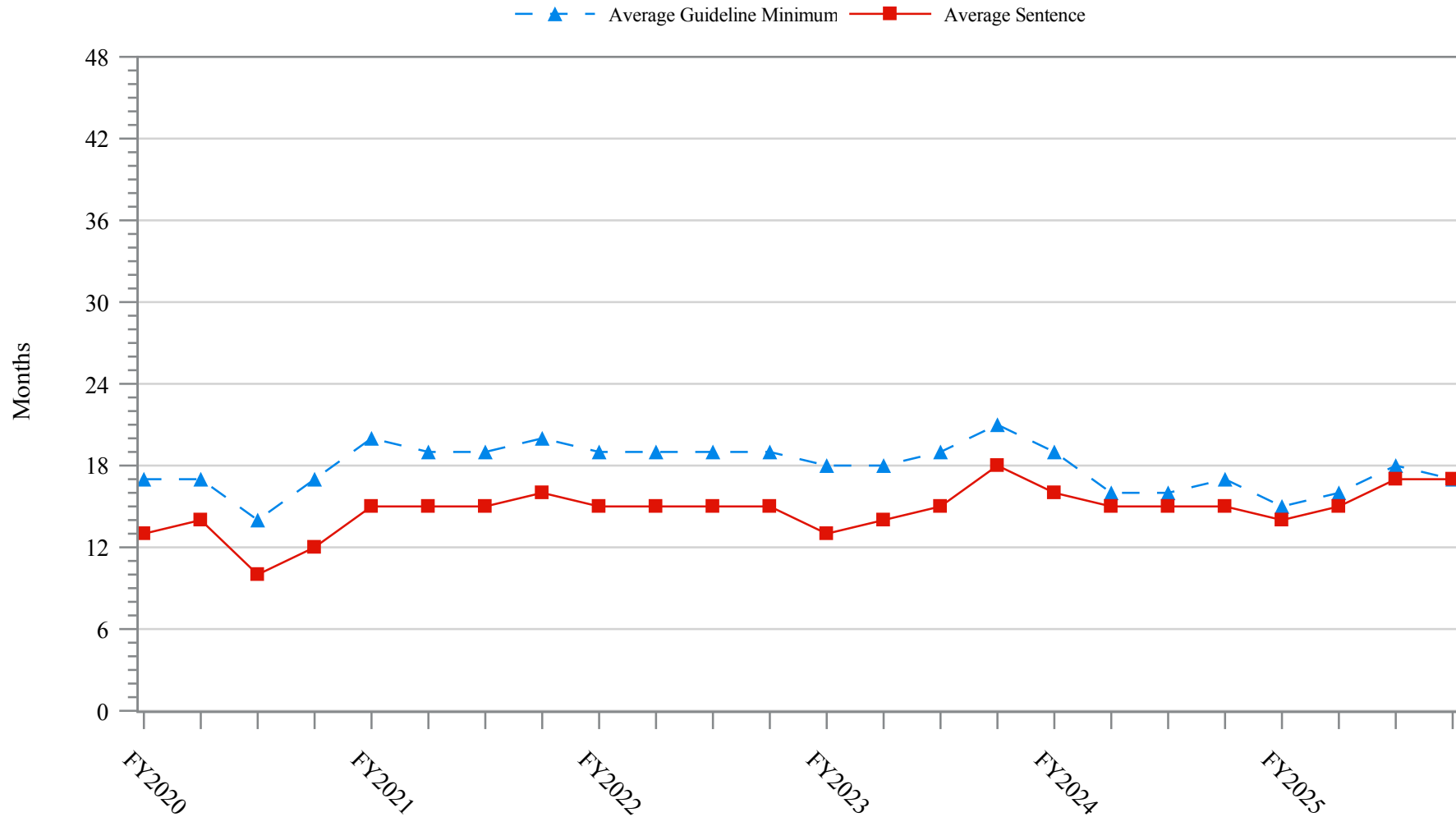
Figure 7

**SENTENCE LENGTH AND GUIDELINE MINIMUM QUARTERLY DATA
FOR INDIVIDUALS SENTENCED UNDER §2K2.1 (UNLAWFUL POSSESSION OF OR TRANSACTION IN FIREARMS)¹
Fiscal Years 2020 - 2025**



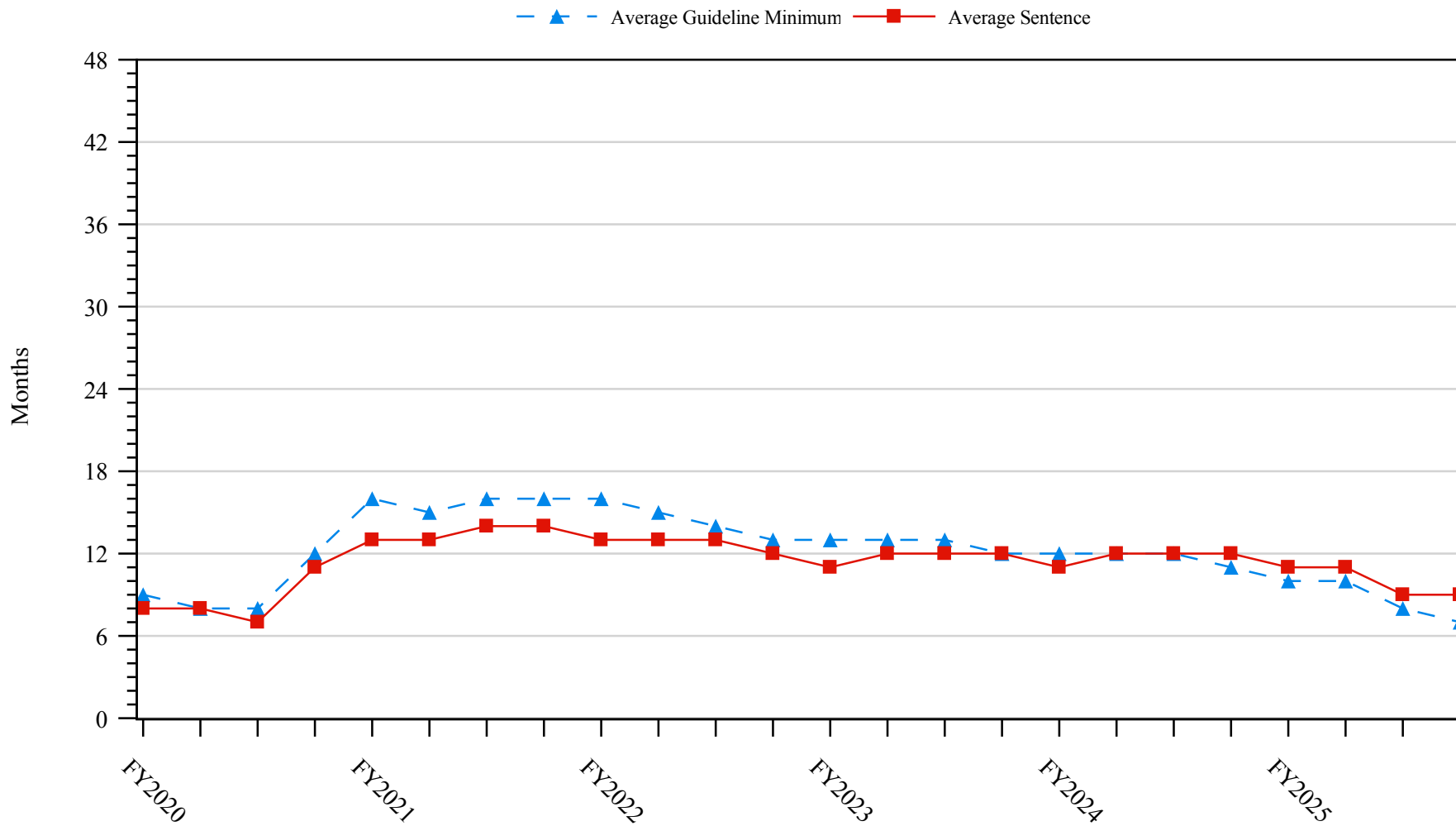
¹ Figure includes only cases with a primary sentencing guideline of USSG §2K2.1 (Unlawful Receipt, Possession, or Transportation of Firearms or Ammunition; Prohibited Transactions Involving Firearms or Ammunition). Cases with guideline minimums of life or probation were included in the guideline minimum average computations as 470 months and zero months, respectively. Cases with sentences of 470 months or greater (including life) or probation were included in the sentence average computations as 470 months and zero months, respectively. The information presented in this figure includes conditions of confinement as described in USSG §5C1.1. Guideline minimums account for applicable statutory mandatory penalties. Descriptions of variables used in this figure are provided in Appendix A.

Figure 8
SENTENCE LENGTH AND GUIDELINE MINIMUM QUARTERLY DATA
FOR INDIVIDUALS SENTENCED UNDER §2L1.1 (ALIEN SMUGGLING)¹
Fiscal Years 2020 - 2025



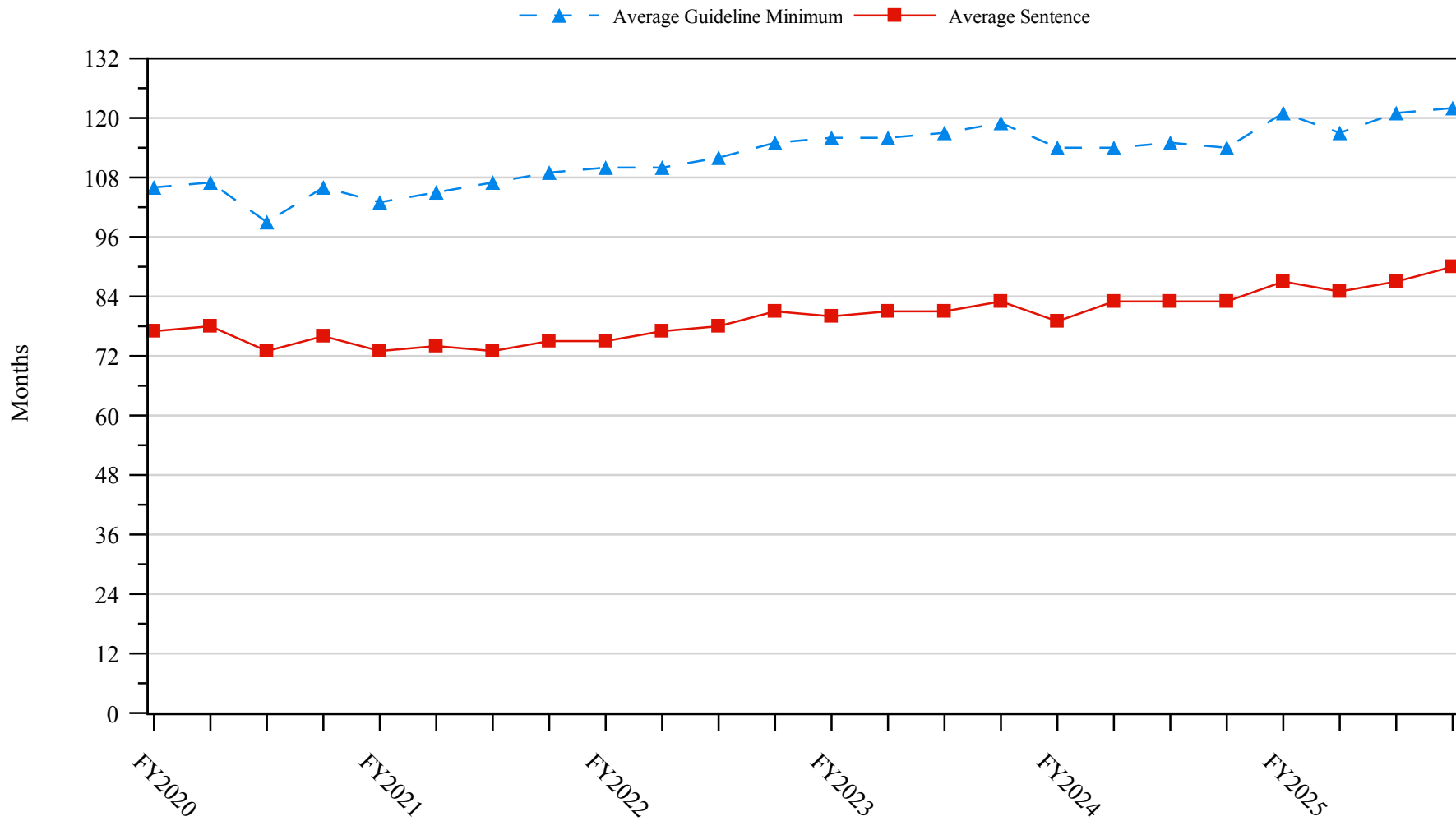
¹ Figure includes only cases with a primary sentencing guideline of USSG §2L1.1 (Smuggling, Transporting, or Harboring an Unlawful Alien). Cases with guideline minimums of life or probation were included in the guideline minimum average computations as 470 months and zero months, respectively. Cases with sentences of 470 months or greater (including life) or probation were included in the sentence average computations as 470 months and zero months, respectively. The information presented in this figure includes conditions of confinement as described in USSG §5C1.1. Guideline minimums account for applicable statutory mandatory penalties. Descriptions of variables used in this figure are provided in Appendix A.

Figure 9
SENTENCE LENGTH AND GUIDELINE MINIMUM QUARTERLY DATA
FOR INDIVIDUALS SENTENCED UNDER §2L1.2 (UNLAWFUL ENTERING OR REMAINING IN THE UNITED STATES)¹
Fiscal Years 2020 - 2025



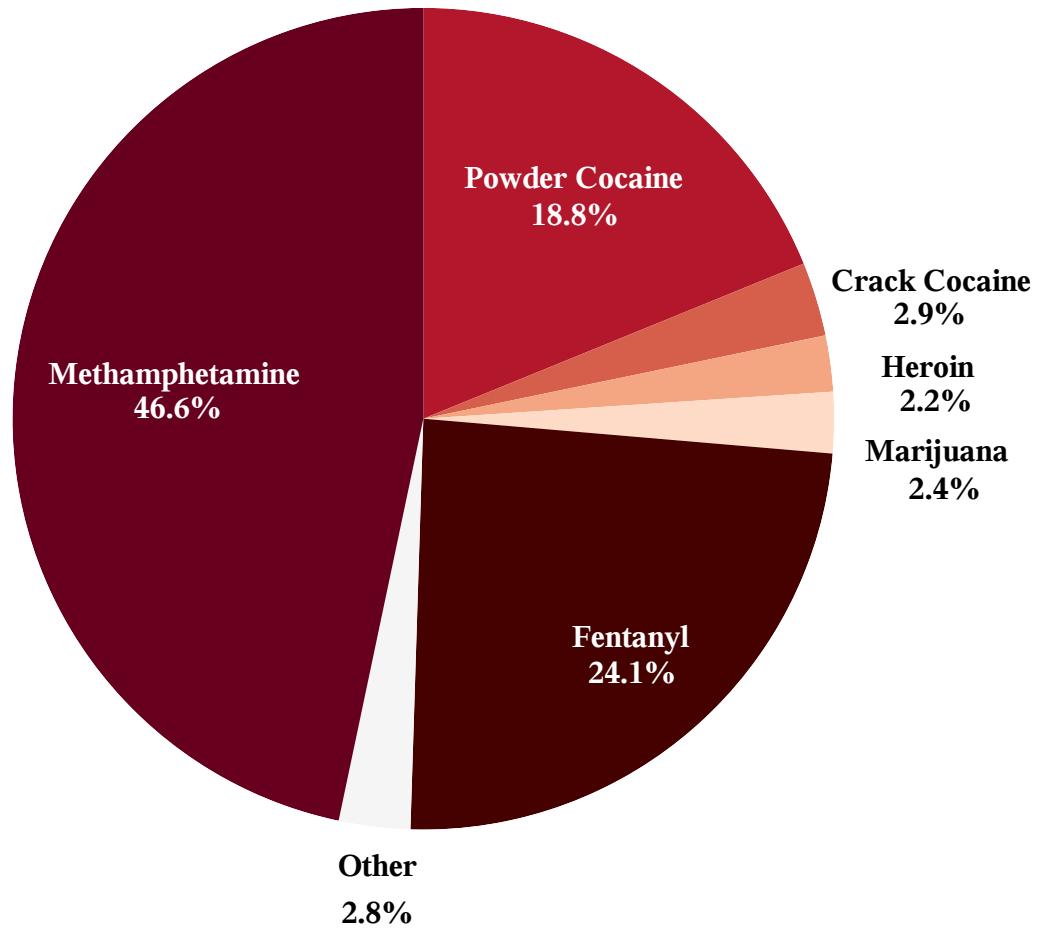
¹ Figure includes only cases with a primary sentencing guideline of USSG §2L1.2 (Unlawful Entering or Remaining in the United States). Cases with guideline minimums of life or probation were included in the guideline minimum average computations as 470 months and zero months, respectively. Cases with sentences of 470 months or greater (including life) or probation were included in the sentence average computations as 470 months and zero months, respectively. The information presented in this figure includes conditions of confinement as described in USSG §5C1.1. Guideline minimums account for applicable statutory mandatory penalties. Descriptions of variables used in this figure are provided in Appendix A.

Figure 10
SENTENCE LENGTH AND GUIDELINE MINIMUM QUARTERLY DATA
FOR INDIVIDUALS SENTENCED UNDER §2D1.1 (UNLAWFUL DRUG TRAFFICKING OR MANUFACTURING)¹
Fiscal Years 2020 - 2025



¹ Figure includes only cases with a primary sentencing guideline of USSG §2D1.1 (Unlawful Manufacturing, Importing, Exporting, or Trafficking (Including Possession with Intent to Commit These Offenses); Attempt or Conspiracy). Cases with guideline minimums of life or probation were included in the guideline minimum average computations as 470 months and zero months, respectively. Cases with sentences of 470 months or greater (including life) or probation were included in the sentence average computations as 470 months and zero months, respectively. The information presented in this figure includes conditions of confinement as described in USSG §5C1.1. Guideline minimums account for applicable statutory mandatory penalties. Descriptions of variables used in this figure are provided in Appendix A.

Figure 11
DISTRIBUTION OF PRIMARY DRUG TYPE
IN FEDERAL DRUG CASES^{1,2}
Fiscal Year 2025

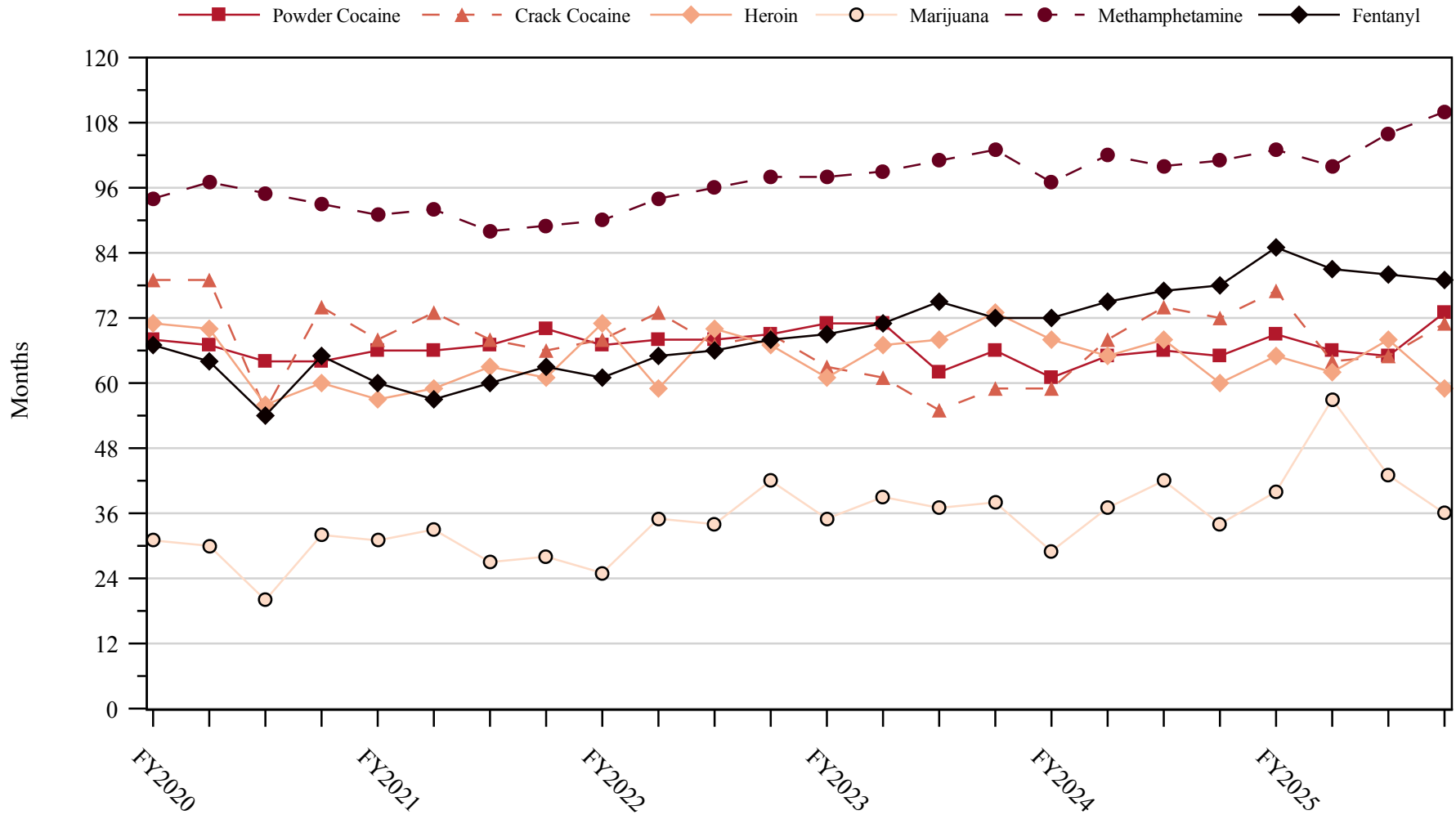


¹ Of the 66,662 cases, in 16,234 the individual was sentenced under USSG Chapter Two, Part D (Drugs). The 'Fentanyl' category includes both Fentanyl (N-phenyl-N-[1-(2-phenylethyl)-4-piperidinyl] Propanamide) and Fentanyl Analogue. Descriptions of variables used in this figure are provided in Appendix A.

² The 'Other' drug category includes the remaining primary drug types of which the following have more than 50 cases: Oxycodone/Oxycontin (182).

SOURCE: U.S. Sentencing Commission, 2025 Datafile, USSCFY25.

Figure 12
SENTENCE LENGTH IN DRUG TRAFFICKING CASES
BY MAJOR DRUG TYPE QUARTERLY DATA¹
Fiscal Years 2020 - 2025



¹ Only individuals sentenced under §§2D1.1 (Drug Trafficking), 2D1.2 (Protected Locations), 2D1.5 (Continuing Criminal Enterprise), 2D1.6 (Use of a Communication Facility), 2D1.8 (Rent/Manage Drug Establishment), 2D1.10 (Endangering Human Life While Manufacturing), or 2D1.14 (Narco-Terrorism) are depicted in this figure. Sentences of 470 months or greater (including life) and probation were included in the sentence average computations as 470 months and zero months, respectively. The information in this figure includes conditions of confinement as described in USSG §5C1.1. Cases missing drug type or sentencing information were also excluded. Descriptions of variables used in this figure are provided in Appendix A.

Appendix A

Descriptions of Datafiles and Variables

Introduction

The Commission collects and analyzes data on federal sentences to support its various activities. As authorized by Congress, the Commission's numerous research responsibilities include (1) the establishment of a research and development program to serve as a clearinghouse and information center for the collection, preparation, and dissemination of information on federal sentencing practices; (2) the publication of data concerning the sentencing process; (3) the systematic collection and dissemination of information concerning sentences actually imposed and the relationship of such sentences to the factors set forth in section 3553(a) of title 18, United States Code; and (4) the systematic collection and dissemination of information regarding the effectiveness of sentences imposed.¹

The Commission maintains a comprehensive, computerized data collection system which forms the basis for its clearinghouse of federal sentencing information and which contributes to the agency's research mission.

Pursuant to 28 U.S.C. § 994(w), the chief judge of each district is required to ensure that within 30 days of entry of judgment in a criminal case, the sentencing court submits a report of sentence to the Commission that includes (1) the judgment and commitment order; (2) the written statement of reasons; (3) any plea agreement; (4) the indictment or other charging document; (5) the presentence report; and (6) any other information the Commission requests. Information on minor and petty offenses are not reported to the Commission as the sentencing guidelines do not apply in those cases.² Cases in which a sentence of death was imposed also are not available in this dataset for this same reason.³

Standard information on each case is extracted from sentencing documents received and computerized for analysis. Note that for all tables, total percentages may not add up to exactly 100 percent due to rounding.

Variables

The following section describes the variables used in this report.

Attribution Category for Sentences Outside the Range

All categories replicate the list of checkboxes available on the Statement of Reasons form. Not all checkbox categories are available in both the departure section and sentences outside the guideline system section on this form and multiple checkboxes may be indicated in a single case so that totals in a table may exceed the total number of cases. The Commission uses these checkboxes in determining government sponsorship: all cases in which one of the pursuant to a plea agreement boxes is indicated are attributed to the government. Additionally, other types of Statement of Reasons forms may indicate sponsorship in writing, and these attributions are also included in the appropriate category.

¹ 28 U.S.C. §§ 995(a)(12) and (14) – (16).

² See U.S. SENTENCING COMM'N, *Guidelines Manual*, §1B1.9 (Nov. 2024).

³ See 18 U.S.C. §§ 3591-99 for the sentencing procedures that apply in death penalty cases.

Circuit

Information on judicial *Circuit* is generated using the location of the judicial district in which the person was sentenced.

Citizenship Status

Information on the *Citizenship Status* of sentenced individuals is obtained from the Presentence Report. Persons are categorized as one of the following: “U.S. citizen,” “resident alien,” “illegal alien,” “extradited alien,” or “non-U.S. citizen, alien status unknown.” The latter four categories are collapsed into the category of “non-U.S. citizen.”

District

Information on the judicial *District* in which sentencing occurred is obtained from the Judgment and Commitment Order.

Downward Departure

Downward Departure consists of cases in which the sentence imposed was below the applicable guideline range and for which the court cited a reason on Part V of the Statement of Reasons form (Departures Pursuant to the Guidelines Manual). In these cases, the court may also have cited 18 U.S.C. § 3553 or factors or reasons specifically prohibited in the provisions, policy statements, or commentary of the sentencing guidelines as additional reasons. This category includes departures that result from government motions as well as from motions by the parties.

Downward Variance

Downward Variance consists of cases in which the sentence imposed was below the applicable guideline range and for which the court cited a reason on Part VI of the Statement of Reasons form (Court Determination for a Variance). This category includes variances which result from government motions as well as from motions by the defendant.

Extent of Decrease

Extent of Decrease is calculated based on the difference between the sentence length (including any months of alternative confinement as defined in USSG §5C1.1) and the guideline minimum (including any statutory trumps) for below range cases. Life imprisonment sentences and cases where the guideline minimum is zero months or life are excluded from all extent of decrease calculations due to the logical difficulty in calculating a decrease from these values. High values of the sentence are capped at 470 months for analytical purposes.

Extent of Increase

Extent of Increase is calculated based on the difference between the guideline maximum (including any statutory trumps) and the sentence length (including any months of alternative confinement as defined in USSG §5C1.1) for above range cases. Life sentences and cases where the guideline minimum is life are excluded from all extent of increase calculations due to the logical difficulty in calculating an increase from these values. High values of the sentence are capped at 470 months for analytical purposes.

Gender

Gender is obtained from the Presentence Report.

Government Motion (Variance)

Government Motion (Variance) consists of cases in which the sentence imposed was below the applicable guideline range pursuant to a government motion and for which the court cited a reason on Part VI of the Statement of Reasons (SOR) form (Court Determination for a Variance). These cases are determined by a yearly case review by Commission staff of both the reasons for the below range sentence and the coding by Commission staff of any indication of government sponsorship as indicated on the Statement of Reasons for below range cases. The SOR form has specific checkboxes to indicate the origins of the variance, but cases that do not use this form may also indicate in writing the origins of the variance. Additionally, all cases with one or more of the following reasons were classified as being sponsored by the government regardless of whether the SOR indicated sponsorship: pursuant to a plea agreement

(binding, non-binding, or unknown), fast track, savings to the government, early plea, waiver of indictment and/or appeal, other government motion, global disposition, due to stipulations, facilitated early release of a material witness, joint recommendation, and a large number of immigration cases. This category does not include cases with USSG §5K1.1 Substantial Assistance departures or USSG §5K3.1 Early Disposition Program (EDP) departures.

Guideline Sentencing Range

The *Guideline Sentencing Range* is taken from the Statement of Reasons provided by the sentencing court. Alternatively, if the Statement of Reasons is missing, then the information is taken from the Presentence Report.

For tables in this report, unless otherwise indicated, the guideline sentencing range does not take into account applicable statutory restrictions on either the maximum or the minimum of the range; therefore, it may differ from the available range, which does take into account the statutory restrictions.

Non-Government Departure

Non-Government Departure consists of cases in which the sentence imposed was outside the applicable guideline range and for which the court cited a reason on Part V of the Statement of Reasons form (Departures Pursuant to the Guidelines Manual) other than USSG §5K1.1 or USSG §5K3.1, and where the government did not initiate, propose, or stipulate to the sentence.

Non-Government Variance

Non-Government Variance consists of cases in which the sentence imposed was outside the applicable guideline range and for which the court cited a reason on Part VI of the Statement of Reasons form (Court Determination for a Variance), and where the government did not initiate, propose, or stipulate to the sentence.

Other Government Motion (Downward Departure)

Other Government Motion is determined by a yearly case review by Commission staff of both the reasons for the below range sentence and the coding by Commission staff of any indication of government sponsorship as indicated on the Statement of Reasons for below range cases. The SOR form has specific checkboxes to indicate the origins of the departure, but cases that do not use this form may also indicate in writing the origins of the departure. Additionally, all cases with one or more of the following reasons were classified as being sponsored by the government regardless of whether the SOR indicated sponsorship: pursuant to a plea agreement (binding, non-binding, or unknown), fast track, savings to the government, early plea, waiver of indictment and/or appeal, other government motion, global disposition, due to stipulations, facilitated early release of a material witness, joint recommendation, and a large number of immigration cases. This category does not include cases with USSG §5K1.1 Substantial Assistance departures or USSG §5K3.1 Early Disposition Program (EDP) departures.

Primary Drug Type

Information on *Primary Drug Type* is obtained from the Presentence Report, Judgment and Commitment Order, or Plea Agreement. It is recorded only if at least one of the statutes of conviction recorded by the Commission is an offense under title 21 of the United States Code or an offense under another title when the underlying conduct involves a controlled substance. Information about type of drug in the text and tables is derived from the primary drug type (i.e., the type that produces the highest base offense level).

The category *Fentanyl* includes cases in which the drug involved is Fentanyl (N-phenyl-N-[1-(2-phenylethyl)-4-piperidinyl] Propanamide) and cases in which the court determined the substance involved to be a Fentanyl analogue, as defined in the *Guidelines Manual*. The category *Marijuana* includes Hashish and Hashish oil. The category *Methamphetamine* includes pure (actual) methamphetamine, “Ice,” methamphetamine mixture, and methamphetamine precursors sentenced under any drug trafficking guideline other than USSG §2D1.11 (for example ephedrine and pseudoephedrine). All drug types not listed separately in this report are collapsed into the “Other” drug category.

Primary Guideline

When more than one sentencing guideline is applied in a case, the *Primary Guideline* is the guideline that has the highest adjusted offense level (this includes the Base Offense Level, all applicable Specific Offense Characteristics, and Chapter Three Adjustments prior to the application of Multiple Count Units).

Race

Information on *Race* is obtained from the Presentence Report in separate categories of race and ethnicity (*White, Black, Native American or Alaskan Native, Asian or Pacific Islander, Multiracial, and "Other"*). Ethnicity data indicates whether a sentenced individual is of Hispanic origin. For purposes of this report, individuals whose ethnic background is designated as Hispanic are represented as Hispanic in all tables regardless of racial background. The *Other* race category includes individuals of Native American or Alaskan Native, Asian or Pacific Islander, Multiracial, and "Other" origin.

Sentence Imposed or Sentence Length

Sentence Imposed or *Sentence Length* reports the mean and median terms of the sentence imposed in months. It also includes any time served amounts and imprisonment under USSG §5G1.3. This information is obtained from the Judgment and Commitment Order. Mean and median sentence lengths are rounded to the nearest month. Probation sentences are included as zero months. Any portion of a sentence that is an alternative confinement as described in USSG §5C1.1 is included.

Cases in which a sentence is imposed, but where the length is indeterminable, are excluded. When sentences are expressed as "time served" on the Judgment and Commitment Order, Commission staff uses the dates in federal custody to determine the length of time served when an individual has been in custody the entire time. If the individual has been in and out of custody, or the start date is unclear/missing, then the Commission assigns a value of one day as a minimal time served amount for these cases. In cases where the court imposes a sentence of life imprisonment, a numeric value is necessary to include these cases in any sentence length analysis. Accordingly, life sentences are reported as 470 months, a length consistent with the average life expectancy of individuals sentenced for federal offenses given the average age of those person. Sentences of greater than 470 months are also reported as 470 months. The footnote in the relevant tables and figures indicates when this occurs.

Sentenced Individuals

Each *Sentenced Individual* or case, as recorded by the Commission, involves a single sentencing event for a single person. Multiple counts of conviction, including counts of conviction charged on multiple indictments, are considered a single sentencing event if a single sentence was imposed for the counts on the same day at the same time by the same judge. An individual may account for more than one case if the person was involved in more than one sentencing event during the fiscal year. Data on co-defendants in the same sentencing will appear as separate cases.

Sentence Type

Using sentencing information obtained from the Judgment and Commitment Order, the *Total Receiving Imprisonment* category includes the number of individuals sentenced (and percent of *Total Cases*) who received a commitment to the Bureau of Prisons. This category is the sum of cases in *Prison Only* and the *Prison and Alternatives* categories.

The *Total Receiving Probation* category includes the number of individuals sentenced (and the percent of *Total Cases*) who received a term of probation with or without a condition of community confinement, intermittent confinement, or home detention. This category is the sum of *Probation Only* and *Probation and Alternatives* categories.

The *Prison Only* category includes individuals sentenced to a term of imprisonment only, with no additional conditions of community confinement, home detention or intermittent confinement.

The *Prison and Alternatives* category includes all cases in which individuals received prison and conditions of alternative confinement as defined in USSG §5C1.1. This category includes, but is not

limited to, Zone A, Zone B, or Zone C cases receiving prison with additional conditions of a term of community confinement, home detention, or intermittent confinement.

The *Probation Only* category includes the number of individuals who received a term of probation without a condition of community confinement, intermittent confinement, or home detention.

The *Probation and Alternatives* category includes the number of individuals who received a term of probation with a condition of community confinement, intermittent confinement, or home detention.

The *Fine Only* category includes the number of individuals who received no prison, no probation, and no time of alternative confinement as defined in USSG §5C1.1. Most of these sentenced individuals received a fine and/or a special assessment.

Sentences Under the Guidelines Manual

This category includes individuals whose sentences are determined to be either within the guideline range or outside the guideline range and for which the court cited a reason on Part V of the Statement of Reasons form (Departures Pursuant to the Guidelines Manual). In these cases, the court may also have cited 18 U.S.C. § 3553 or factors or reasons specifically prohibited in the provisions, policy statements, or commentary of the sentencing guidelines as additional reasons. This category includes departures which result from government motions as well as from motions by the sentenced individual.

Type of Crime

Information on *Type of Crime* is obtained from the primary guideline detailed in the Presentence Report. If the primary guideline is an “attempt/conspiracy” guideline such as USSG §2X1.1, then the underlying guideline is used to determine the type of crime category. If there is no primary guideline provided, then information about the type of crime category is obtained from the statutes of conviction listed on the Judgment and Commitment Order. When the “type of crime” for the case is determined from the statutes of conviction, the offense applicable to the count of conviction with the highest statutory maximum becomes the “type of crime.” If two or more counts are found to have the same statutory maximum, the “type of crime” is selected according to which count of conviction has the highest statutory minimum. Finally, in the event of a small number of cases still tied, the “type of crime” that best represented the nature of the criminal behavior is chosen. For convenience in analysis, a summary variable describing “type of crime” is derived. This is generated by grouping similar primary offenses into a smaller set of categories. Note that the crime categories differ between the individual and organizational datafiles. Listed below are the type of crimes that are grouped into each of the crime categories used in the individual datafile tables for this report:

Administration of Justice includes obstructing or impeding officers, contempt, obstruction of justice, perjury or subornation of perjury, bribery of a witness, impersonation, failure to appear by defendant, failure to appear by material witness, commission of offense while on release, payment of witness, and misprision of a felony. This category includes persons sentenced under §§2A2.4, 2J1.1, 2J1.2, 2J1.3, 2J1.4, 2J1.6, 2J1.9, and 2X4.1 of the *Guidelines Manual*.

Antitrust includes bid-rigging, price-fixing, and market allocation agreement. This category includes individuals sentenced under §2R1.1 of the *Guidelines Manual*.

Arson includes property damage by explosives and use of fire or explosives to commit a federal felony. This category includes persons sentenced under §§2K1.4 and 2K1.7 (deleted) of the *Guidelines Manual*.

Assault includes attempt to commit murder, assault with intent to murder, threatening communication, aggravated assault, minor assault, and conspiracy that includes assault with attempt to murder. This category includes persons sentenced under §§2A2.1, 2A2.2, and 2A2.3 of the *Guidelines Manual*.

Bribery/Corruption includes offenses involving public officials and violations of federal election campaign laws, bribe involving officials, bribery — bank loan/commercial, loan or gratuity to bank examiner, *etc.*, gratuity involving officials, bribe or gratuity affecting employee plan, conflict of interest, payment or receipt of unauthorized compensation, and making, receiving, or failing to report a contribution, donation, or expenditure in violation of the Federal Election Campaign Act. This category includes persons sentenced under §§2B4.1, 2C1.1, 2C1.2, 2C1.3, 2C1.4 (deleted), 2C1.5, 2C1.6 (deleted), 2C1.7 (deleted), and 2C1.8 of the *Guidelines Manual*.

Burglary/Trespass includes burglary of a residence and burglary of a structure other than a residence, post office burglary, burglary of DEA premises (pharmacy), bank burglary, and trespass. This category includes persons sentenced under §§2B2.1, 2B2.2 (deleted), and 2B2.3 of the *Guidelines Manual*.

Child Pornography includes the receipt or possession of materials involving the sexual exploitation of minors. This category includes persons sentenced under §§2G2.2 and 2G2.4 (deleted) of the *Guidelines Manual*.

Commercialized Vice includes gambling, animal fighting, and prostitution offenses. This category includes persons sentenced under §2G1.1 where the court did NOT apply a Base Offense Level of 34, and all individuals sentenced under §§2E3.1, 2E3.2 (deleted), and 2E3.3 (deleted) of the *Guidelines Manual*.

Drug Possession includes simple possession of all drug types. This category includes persons sentenced under §2D2.1 of the *Guidelines Manual*.

Drug Trafficking includes drug distribution/manufacture — conspiracy, continuing criminal enterprise, drug distribution — employee under 21, drug distribution near school, drug import/export, drug distribution to person under 21, establish/rent drug operation, endangering human life while manufacturing, and narco-terrorism. This category includes persons sentenced under §§2D1.1, 2D1.2, 2D1.5, 2D1.6, 2D1.8, 2D1.10, and 2D1.14 of the *Guidelines Manual*.

Environmental includes waste discharge; specially protected fish, wildlife, and plants; recordkeeping; tampering; and falsification; tampering with a public water system; mishandling of environmental pollutants; and hazardous devices on federal lands. This category includes persons sentenced under §§2K3.1 (deleted), 2Q1.1, 2Q1.2, 2Q1.3, 2Q1.4, 2Q1.5 (deleted), 2Q1.6, 2Q2.1, and 2Q2.2 (deleted) of the *Guidelines Manual*.

Extortion/Racketeering includes extortion by force, or threat of injury or serious damage, extortionate extension of credit, blackmail, Hobbs Act extortion, travel in aid of racketeering, crime relating to racketeering, and violent crimes in aid of racketeering, unlawful conduct relating to contraband cigarettes, and labor racketeering. This category includes persons sentenced under §§2B3.2, 2B3.3, 2E1.1, 2E1.2, 2E1.3, 2E1.4, 2E1.5 (deleted), 2E2.1, 2E4.1, 2E5.1, 2E5.2 (deleted), 2E5.3, 2E5.4 (deleted), 2E5.5 (deleted), and 2E5.6 (deleted) of the *Guidelines Manual*.

Firearms includes unlawful receipt/possession/transportation of firearms, ammunition, or explosive material; prohibited transactions involving firearms or ammunition; possession of guns/explosives on aircraft; unlawful trafficking, *etc.*, in explosives; possession of guns/explosives in federal facility/schools; use of fire or explosives to commit felony; use of firearms or ammunition during crime; improper storage of explosive materials; and failure to report theft of explosive materials. This category includes persons sentenced under §§2K1.1, 2K1.2, 2K1.3, 2K1.5, 2K1.6, 2K2.1, 2K2.2, 2K2.3, 2K2.4, 2K2.5, 2K2.6, and 2K3.2 of the *Guidelines Manual*.

Food and Drug includes tampering with risk of death or injury, providing false information or tampering with products, tampering to injure business, odometer laws and regulations, and violation of regulations involving food, drugs, etc. This category includes persons sentenced under §§2N1.1, 2N1.2, 2N1.3, 2N2.1, and 2N3.1 of the *Guidelines Manual*.

Forgery/Counterfeiting/Copyright includes counterfeit bearer obligations and forgery/counterfeit (non-bearer obligations) as well as criminal infringement of copyright or trademark. This category includes persons sentenced under §§2B5.1, 2B5.2 (deleted), 2B5.3, and 2B5.4 (deleted) of the *Guidelines Manual*.

Fraud/Theft/Embezzlement includes fraud and deceit, embezzlement — property, embezzlement from labor unions, embezzlement — mail/post office, embezzlement from benefit plans, bank embezzlement, bank larceny, theft from benefit plans, other theft — mail/post office, receipt/possession of stolen property, theft from labor union, theft or damage to cultural heritage resources, insider trading, and aggravated identity theft. This category includes persons sentenced under §§2B1.1, 2B1.2 (deleted), 2B1.3 (deleted), 2B1.4, 2B1.5, 2B1.6, 2F1.1 (deleted), and 2F1.2 (deleted) of the *Guidelines Manual*.

Immigration includes trafficking in U.S. passports, trafficking in entry documents, failure to surrender naturalization certificate, fraudulently acquiring U.S. passports, smuggling, transporting, or harboring an unlawful alien, fraudulently acquiring entry documents, and unlawfully entering or remaining in the U.S. This category includes persons sentenced under §§2L1.1, 2L1.2, 2L1.3 (deleted), 2L2.1, 2L2.2, 2L2.3 (deleted), 2L2.4 (deleted), and 2L2.5 of the *Guidelines Manual*.

Individual Rights includes interference with rights under color of law; force or threats to deny benefits or rights; obstructing an election or registration; manufacture, etc. — eavesdropping device; other deprivations/discrimination; obstructing correspondence; peonage, servitude, and slave trade; intercept communication or eavesdropping; and conspiracy to deprive individual of civil rights. This category includes persons sentenced under §§2H1.1, 2H1.2 (deleted), 2H1.3 (deleted), 2H1.4 (deleted), 2H1.5 (deleted), 2H2.1, 2H3.1, 2H3.2, 2H3.3, 2H4.1, and 2H4.2 of the *Guidelines Manual*.

Kidnapping includes hostage and ransom taking, abduction, unlawful restraint, and aircraft piracy. This category includes persons sentenced under §§2A4.1, 2A4.2, and 2A5.1 of the *Guidelines Manual*.

Manslaughter includes both involuntary and voluntary manslaughter. This category includes persons sentenced under §§2A1.3 and 2A1.4 of the *Guidelines Manual*.

Money Laundering includes laundering of monetary instruments, monetary transaction from unlawful activity, failure to file currency report, and failure to report monetary transactions. This category includes persons sentenced under §§2S1.1, 2S1.2 (deleted), 2S1.3, and 2S1.4 (deleted) of the *Guidelines Manual*.

Murder includes first degree murder, second degree murder, and conspiracy or solicitation to commit murder. This category includes persons sentenced under §§2A1.1, 2A1.2, and 2A1.5 of the *Guidelines Manual*.

National Defense includes treason, sabotage, espionage, evasion of military service, prohibited financial transactions and exports, providing material support to designated foreign terrorist organizations, nuclear, biological, and chemical weapons, and weapons of mass destruction. This category includes persons sentenced under §§2M1.1, 2M2.1, 2M2.2 (deleted), 2M2.3, 2M2.4 (deleted), 2M3.1, 2M3.2, 2M3.3, 2M3.4, 2M3.5, 2M3.6

(deleted), 2M3.7 (deleted), 2M3.8 (deleted), 2M3.9, 2M4.1, 2M5.1, 2M5.2, 2M5.3, 2M6.1, and 2M6.2 of the *Guidelines Manual*.

Obscenity/Other Sex Offenses includes failure to register as a sex offender, recordkeeping offenses involving production of sexually explicit material, and importing, mailing, transporting, or broadcasting obscene material. This category includes persons sentenced under §§2A3.5, 2A3.6, 2G2.5, 2G3.1, and 2G3.2 of the *Guidelines Manual*.

Prison Offenses includes contraband in prisons, riots in federal facilities, and escape. This category includes persons sentenced under §§2P1.1, 2P1.2, 2P1.3, and 2P1.4 (deleted) of the *Guidelines Manual*.

Robbery includes bank robbery, Hobbs Act robbery, post office robbery, other robbery, and carjacking. This category includes persons sentenced under §2B3.1 of the *Guidelines Manual*.

Sexual Abuse includes criminal sexual abuse, sexual abuse of a minor, sexual abuse of a ward, abusive sexual contact, transportation of minor for sex, sex trafficking of children, sex trafficking of adults by force, fraud or coercion, child pornography production, and child exploitation enterprises. This category includes persons sentenced under §2G1.1 who received a Base Offense Level of 34, and all individuals sentenced under §§2A3.1, 2A3.2, 2A3.3, 2A3.4, 2G1.2 (deleted), 2G1.3, 2G2.1, 2G2.3, and 2G2.6 of the *Guidelines Manual*.

Stalking/Harassing includes threatening or harassing communications, hoaxes, false liens, stalking, and domestic violence. This category includes persons sentenced under §§2A6.1 and 2A6.2 of the *Guidelines Manual*.

Tax includes non-payment of taxes, conspiracy to avoid taxes, offenses relating to withholding statements, aiding or advising tax fraud, failing to collect or truthfully account for and pay over taxes, failing to deposit collected taxes in required accounts after notice, alcohol and tobacco tax offenses, and customs taxes. This category includes persons sentenced under §§2T1.1, 2T1.2 (deleted), 2T1.3 (deleted), 2T1.4, 2T1.5 (deleted), 2T1.6, 2T1.7, 2T1.8, 2T1.9, 2T2.1, 2T2.2, 2T3.1, and 2T3.2 (deleted) of the *Guidelines Manual*.

Other Miscellaneous Offenses includes interference with a flight crew, unlawful sale, transportation, possession, manufacturing, or importation of drug paraphernalia, distributing, importing, or exporting listed chemicals, evading reporting or recordkeeping requirements involving chemicals, acquiring a controlled substance by fraud or forgery, border tunnels and subterranean passages, and all other felony and miscellaneous offenses not previously listed in any of the other categories or covered by specific guidelines. This category includes persons sentenced under §§2A5.2, 2D1.7, 2D1.11, 2D1.12, 2D1.13, 2D2.2, 2D2.3, 2D3.1, 2X5.1, 2X5.2, and 2X7.1 of the *Guidelines Manual*. In addition, this category includes persons sentenced under §§2X1.1, 2X2.1, 2X3.1, 2X6.1, and 2X7.2 of the *Guidelines Manual* if no underlying guideline was provided.

Upward Departure

Upward Departure consists of cases in which the sentence imposed was above the applicable guideline range and for which the court cited a reason on Part V of the Statement of Reasons form (Departures Pursuant to the Guidelines Manual). In these cases, the court may also have cited 18 U.S.C. § 3553 or factors or reasons specifically prohibited in the provisions, policy statements, or commentary of the sentencing guidelines as additional reasons. This category includes departures which result from government motions as well as from motions by the parties.

Upward Variance

Upward Variance consists of cases in which the sentence imposed was above the applicable guideline range and for which the court cited a reason on Part VI of the Statement of Reasons form (Court Determination for a Variance). This category includes variances which result from government motions as well as from motions by the defendant.

Within Guideline Range

Cases are classified in this category when the sentence is within both the guideline range and within the statutory minimum and maximum. The sentence must meet minimum zone requirements as well. In rare instances when a very small departure or variance is granted, but the sentence is still within the original guideline range, the sentence is reported as within range.

Year

Information on *Year* is obtained from the Judgment and Commitment Order. Unless otherwise indicated, the sentencing year is defined as the fiscal year in which the individual was sentenced.