

U.S. Sentencing Commission Final Quarterly Data Report



Fiscal Year 2014

Introduction

As part of its ongoing mission, the United States Sentencing Commission provides Congress, the judiciary, the executive branch, and the general public with data extracted and analyzed from sentencing documents submitted by courts to the Commission.¹ Data is reported on an annual basis in the Commission's *Annual Report* and *Sourcebook of Federal Sentencing Statistics*.² After the Supreme Court's decision in *United States v. Booker* on January 12, 2005, which rendered the sentencing guidelines advisory instead of mandatory, many people expressed an interest in knowing what changes, if any, in federal sentencing practices would result. The Commission responded by reconfiguring its data collection, analysis, and reporting efforts to provide real-time data reporting from the submitted documents.

The Commission first reported data on February 10, 2005 to Congress³ and began reporting data approximately monthly shortly thereafter. The types of data reported increased over time to accommodate various requests for the additional information. In March 2006, the Commission released a comprehensive report, *Final Report on the Impact of United States v. Booker on Federal Sentencing*,⁴ based on cases sentenced one year since the *Booker* decision. Because the report included additional analyses that had not been included in the monthly reports, not all the data presented in the report was comparable with the monthly releases, which made comparing data over time difficult.

In an effort to standardize the Commission's post-*Booker* analyses and to facilitate the identification of emerging trends going forward, the Commission began generating a new set of tables and charts on a quarterly basis for public release on the Commission's website beginning with the third quarter of fiscal year 2006. These quarterly data reports are similar in format and methodology to tables and figures produced in the *Sourcebook* or in the Commission's *Booker* report. Some of the figures include data from fiscal years before the *Booker* decision to facilitate analysis of sentencing trends over time. Other figures and all of the tables contain cumulative data (*i.e.*, data from the start of the fiscal year through the most current quarter). Appendix B cross-references the quarterly table numbers and figure letters as well as the corresponding number or letter in the *Sourcebook* (if it exists in the *Sourcebook*) so that the quarterly data can

¹ In each felony or Class A misdemeanor case sentenced in federal court, sentencing courts are required to submit the following documents to the Commission: the Judgment and Commitment Order, the Statement of Reasons, the plea agreement (if applicable), the indictment or other charging document, and the presentence report. See 28 U.S.C. § 994(w).

² Electronic copies of the 1995-2014 *Annual Report* and *Sourcebook of Federal Sentencing Statistics* are available at the Commission's website, www.ussc.gov.

³ See www.ussc.gov/bf.htm for an electronic copy of the prepared testimony of Ricardo H. Hinojosa, chair of the United States Sentencing Commission, before the Subcommittee on Crime, Terrorism, and Homeland Security, Committee on the Judiciary, United States House of Representatives, February 10, 2005.

⁴ See www.ussc.gov/bf.htm for an electronic copy of the Commission's *Final Report on the Impact of United States v. Booker on Federal Sentencing*.

be compared easily with data from prior fiscal years.⁵ In Appendix A are descriptions of datafile and variable definitions.

⁵ The Commission has tried to maintain the same table numbers and figure letters over the past several years but, due to slight differences in reporting categories between pre- and post-*Booker* time periods, the numbers and letters may not correspond exactly over time. Please refer to the table of contents for each of the prior *Sourcebook* years to determine the corresponding table number or figure letter.

CONTENTS

Information on Sentences Relative to the Guideline Range

Table 1: National Comparison of Sentence Imposed and Position Relative to the Guideline Range.....	1
Table 2: Sentences Relative to the Guideline Range by Circuit and District.....	2
Table 3: Sentences Relative to the Guideline Range by Each Primary Offense Category.....	8
Figure A: Quarterly Data for Within Range and Out of Range Sentences.....	10
Figure B: Quarterly Data for Within Range/Government Sponsored and Other Out of Range Sentences.....	11
Table 4: Quarterly Data for Within Range and Out of Range Sentences.....	12
Table 5: Sentences Relative to the Guideline Range by Each Primary Sentencing Guideline...	13
Table 6: Attribution Category for Cases Outside of the Guideline Range.....	17
Table 7: §5K1.1 Substantial Assistance Departure Cases: Degree of Decrease for Offenders in Each Primary Offense Category.....	19
Table 8: §5K3.1 Early Disposition Program Departure Cases: Degree of Decrease for Offenders in Each Primary Offense Category.....	20
Table 9: Other Government Sponsored Below Range Cases: Degree of Decrease for Offenders in Each Primary Offense Category.....	21
Table 10: Downward Departures from Guideline Range: Degree of Decrease for Offenders in Each Primary Offense Category.....	22
Table 11: Downward Departures with <i>Booker</i> /18 U.S.C. § 3553: Degree of Decrease for Offenders in Each Primary Offense Category.....	23
Table 12: Below Guideline Range with <i>Booker</i> /18 U.S.C. § 3553: Degree of Decrease for Offenders in Each Primary Offense Category.....	24
Table 13: All Remaining Below Guideline Range Cases: Degree of Decrease for Offenders in Each Primary Offense Category.....	25

Table 14: Upward Departures from Guideline Range: Degree of Increase for Offenders in Each Primary Offense Category. 26

Table 15: Upward Departures with *Booker*/18 U.S.C. § 3553: Degree of Increase for Offenders in Each Primary Offense Category.. . . . 27

Table 16: Above Guideline Range with *Booker*/18 U.S.C. § 3553: Degree of Increase for Offenders in Each Primary Offense Category. 28

Table 17: All Remaining Above Guideline Range Cases: Degree of Increase for Offenders in Each Primary Offense Category.. . . . 29

Sentence Imposed Information

Table 18: Offenders Receiving Sentencing Options in Each Primary Offense Category. 30

Table 19: Sentence Length in Each Primary Offense Category. 31

Figure C: Average Sentence Length and Average Guideline Minimum Quarterly Data for All Offenders. 32

Figure D: Average Sentence Length and Average Guideline Minimum Quarterly Data for §2B1.1 Offenders.. . . . 33

Figure E: Average Sentence Length and Average Guideline Minimum Quarterly Data for §2K2.1 Offenders.. . . . 34

Figure F: Average Sentence Length and Average Guideline Minimum Quarterly Data for §2L1.1 Offenders.. . . . 35

Figure G: Average Sentence Length and Average Guideline Minimum Quarterly Data for §2L1.2 Offenders.. . . . 36

Figure H: Average Sentence Length and Average Guideline Minimum Quarterly Data for §2D1.1 Offenders.. . . . 37

Figure I: Average Sentence Length for Each Drug Type. 38

Table 20: Within Range Cases: Position of Sentence for Offenders in Each Primary Offense Category. 39

General Information (Primary Offenses, Mode of Conviction, and Document Submission)

Figure J: Offenders in Each Primary Offense Category. 40

Table 21: Guideline Offenders in Each Primary Offense Category. 41

Table 22: Guilty Pleas and Trials in Each Primary Offense Category. 42

Figure K: Quarterly Data for Guilty Pleas and Trials. 43

Table 23: Race of Offenders in Each Primary Offense Category. 44

Table 24: Gender of Offenders in Each Primary Offense Category. 45

Table 25: Age, Race, and Gender of Offenders. 46

Table 26: Citizenship of Offenders in Each Primary Offense Category. 47

Table 27: Document Submission by Each Circuit and District. 48

Table 28: Rate of Submission of Statement of Reasons Form by Each Circuit and District. . . . 51

Appendices

Appendix A: Descriptions of Datafiles and Variables. A-1

Appendix B: List of Quarterly Report Tables and Figures and Comparable
Sourcebook Number/Letter. B-1

**NATIONAL COMPARISON OF SENTENCE IMPOSED AND
POSITION RELATIVE TO THE GUIDELINE RANGE¹
Fiscal Year 2014**

	N	%
TOTAL CASES	74,126	100.0
CASES SENTENCED WITHIN GUIDELINE RANGE	34,117	46.0
CASES SENTENCED ABOVE GUIDELINE RANGE	1,645	2.2
DEPARTURE ABOVE GUIDELINE RANGE	466	0.6
Upward Departure From Guideline Range ²	343	0.5
Upward Departure With <i>Booker</i> /18 U.S.C. § 3553 ³	123	0.2
OTHERWISE ABOVE GUIDELINE RANGE	1,179	1.6
Above Guideline Range With <i>Booker</i> /18 U.S.C. § 3553 ⁴	1,104	1.5
All Remaining Cases Above Guideline Range ⁵	75	0.1
GOVERNMENT SPONSORED BELOW RANGE⁶	22,494	30.3
§5K1.1 Substantial Assistance Departure	9,482	12.8
§5K3.1 Early Disposition Program Departure	6,944	9.4
Other Government Sponsored Below Range	6,068	8.2
NON-GOVERNMENT SPONSORED BELOW RANGE	15,870	21.4
DEPARTURE BELOW GUIDELINE RANGE	2,564	3.5
Downward Departure From Guideline Range ²	1,757	2.4
Downward Departure With <i>Booker</i> /18 U.S.C. § 3553 ³	807	1.1
OTHERWISE BELOW GUIDELINE RANGE	13,306	18.0
Below Guideline Range With <i>Booker</i> /18 U.S.C. § 3553 ⁴	12,894	17.4
All Remaining Cases Below Guideline Range ⁵	412	0.6

¹ This table reflects the 75,836 cases sentenced in Fiscal Year 2014. Of these, 1,710 cases were excluded because information was missing from the submitted documents that prevented the comparison of the sentence and the guideline range. Descriptions of variables used in this table are provided in Appendix A.

² All cases with departures in which the court did not indicate as a reason either *United States v. Booker*, 18 U.S.C. § 3553, or a factor or reason specifically prohibited in the provisions, policy statements, or commentary of the *Guidelines Manual*.

³ All cases sentenced outside of the guideline range in which the court indicated both a departure (see footnote 2) and a reference to either *United States v. Booker*, 18 U.S.C. § 3553, or related factors as a reason for sentencing outside of the guideline system.

⁴ All cases sentenced outside of the guideline range in which no departure was indicated and in which the court cited *United States v. Booker*, 18 U.S.C. § 3553, or related factors as one of the reasons for sentencing outside of the guideline system.

⁵ All cases sentenced outside of the guideline range that could not be classified into any of the three previous outside of the range categories. This category includes cases in which no reason was provided for a sentence outside of the guideline range.

⁶ Cases in which a reason for the sentence indicated that the prosecution initiated, proposed, or stipulated to a sentence outside of the guideline range, either pursuant to a plea agreement or as part of a non-plea negotiation with the defendant.

SOURCE: U.S. Sentencing Commission, 2014 Datafile, USSCFY14.

SENTENCES RELATIVE TO THE GUIDELINE RANGE BY CIRCUIT AND DISTRICT¹
Fiscal Year 2014

CIRCUIT District	TOTAL	WITHIN GUIDELINE RANGE		UPWARD DEPARTURE		UPWARD DEPARTURE W/ BOOKER		ABOVE RANGE W/ BOOKER		REMAINING ABOVE RANGE	
		N	%	N	%	N	%	N	%	N	%
TOTAL	74,126	34,117	46.0	343	0.5	123	0.2	1,104	1.5	75	0.1
D.C. CIRCUIT	338	105	31.1	0	0.0	0	0.0	4	1.2	0	0.0
District of Columbia	338	105	31.1	0	0.0	0	0.0	4	1.2	0	0.0
FIRST CIRCUIT	2,448	1,299	53.1	9	0.4	5	0.2	82	3.3	13	0.5
Maine	199	69	34.7	0	0.0	0	0.0	4	2.0	0	0.0
Massachusetts	450	107	23.8	2	0.4	0	0.0	6	1.3	0	0.0
New Hampshire	150	62	41.3	0	0.0	1	0.7	4	2.7	0	0.0
Puerto Rico	1,477	1,003	67.9	7	0.5	4	0.3	67	4.5	13	0.9
Rhode Island	172	58	33.7	0	0.0	0	0.0	1	0.6	0	0.0
SECOND CIRCUIT	4,176	1,258	30.1	11	0.3	14	0.3	36	0.9	1	0.0
Connecticut	355	94	26.5	1	0.3	1	0.3	3	0.8	0	0.0
New York											
Eastern	968	242	25.0	3	0.3	6	0.6	9	0.9	0	0.0
Northern	405	198	48.9	0	0.0	2	0.5	2	0.5	0	0.0
Southern	1,689	450	26.6	2	0.1	4	0.2	21	1.2	0	0.0
Western	554	226	40.8	3	0.5	1	0.2	1	0.2	1	0.2
Vermont	205	48	23.4	2	1.0	0	0.0	0	0.0	0	0.0
THIRD CIRCUIT	2,488	887	35.7	6	0.2	3	0.1	26	1.0	3	0.1
Delaware	97	35	36.1	0	0.0	0	0.0	3	3.1	0	0.0
New Jersey	661	248	37.5	1	0.2	0	0.0	3	0.5	0	0.0
Pennsylvania											
Eastern	768	213	27.7	0	0.0	3	0.4	7	0.9	2	0.3
Middle	416	181	43.5	3	0.7	0	0.0	0	0.0	0	0.0
Western	486	181	37.2	2	0.4	0	0.0	11	2.3	1	0.2
Virgin Islands	60	29	48.3	0	0.0	0	0.0	2	3.3	0	0.0
FOURTH CIRCUIT	5,965	3,178	53.3	33	0.6	20	0.3	83	1.4	8	0.1
Maryland	796	243	30.5	6	0.8	3	0.4	22	2.8	2	0.3
North Carolina											
Eastern	637	325	51.0	4	0.6	8	1.3	5	0.8	3	0.5
Middle	497	328	66.0	3	0.6	3	0.6	6	1.2	1	0.2
Western	629	323	51.4	1	0.2	1	0.2	5	0.8	0	0.0
South Carolina	750	418	55.7	9	1.2	1	0.1	6	0.8	1	0.1
Virginia											
Eastern	1,620	1,049	64.8	9	0.6	3	0.2	22	1.4	0	0.0
Western	401	149	37.2	0	0.0	0	0.0	8	2.0	0	0.0
West Virginia											
Northern	341	186	54.5	1	0.3	1	0.3	4	1.2	0	0.0
Southern	294	157	53.4	0	0.0	0	0.0	5	1.7	1	0.3

Table 2 (cont.)

CIRCUIT District	§5K1.1 SUBSTANTIAL ASSISTANCE		§5K3.1 EARLY DISPOSITION		OTHER GOV'T SPONSORED		DOWNWARD DEPARTURE		DOWNWARD DEPARTURE W/ BOOKER		BELOW RANGE W/ BOOKER		REMAINING BELOW RANGE	
	N	%	N	%	N	%	N	%	N	%	N	%	N	%
TOTAL	9,482	12.8	6,944	9.4	6,068	8.2	1,757	2.4	807	1.1	12,894	17.4	412	0.6
D.C. CIRCUIT	83	24.6	5	1.5	50	14.8	17	5.0	18	5.3	52	15.4	4	1.2
District of Columbia	83	24.6	5	1.5	50	14.8	17	5.0	18	5.3	52	15.4	4	1.2
FIRST CIRCUIT	263	10.7	41	1.7	278	11.4	36	1.5	23	0.9	375	15.3	24	1.0
Maine	50	25.1	0	0.0	4	2.0	2	1.0	4	2.0	64	32.2	2	1.0
Massachusetts	62	13.8	5	1.1	131	29.1	8	1.8	6	1.3	121	26.9	2	0.4
New Hampshire	13	8.7	1	0.7	26	17.3	6	4.0	1	0.7	36	24.0	0	0.0
Puerto Rico	123	8.3	35	2.4	79	5.3	20	1.4	12	0.8	94	6.4	20	1.4
Rhode Island	15	8.7	0	0.0	38	22.1	0	0.0	0	0.0	60	34.9	0	0.0
SECOND CIRCUIT	845	20.2	129	3.1	223	5.3	117	2.8	90	2.2	1,433	34.3	19	0.5
Connecticut	62	17.5	0	0.0	37	10.4	25	7.0	3	0.8	128	36.1	1	0.3
New York														
Eastern	212	21.9	101	10.4	82	8.5	23	2.4	43	4.4	243	25.1	4	0.4
Northern	97	24.0	4	1.0	6	1.5	4	1.0	3	0.7	88	21.7	1	0.2
Southern	291	17.2	23	1.4	43	2.5	48	2.8	31	1.8	765	45.3	11	0.7
Western	143	25.8	1	0.2	29	5.2	4	0.7	2	0.4	141	25.5	2	0.4
Vermont	40	19.5	0	0.0	26	12.7	13	6.3	8	3.9	68	33.2	0	0.0
THIRD CIRCUIT	733	29.5	18	0.7	179	7.2	34	1.4	32	1.3	555	22.3	12	0.5
Delaware	9	9.3	0	0.0	13	13.4	1	1.0	0	0.0	35	36.1	1	1.0
New Jersey	204	30.9	8	1.2	40	6.1	6	0.9	14	2.1	137	20.7	0	0.0
Pennsylvania														
Eastern	321	41.8	5	0.7	37	4.8	5	0.7	5	0.7	164	21.4	6	0.8
Middle	93	22.4	5	1.2	31	7.5	5	1.2	5	1.2	91	21.9	2	0.5
Western	93	19.1	0	0.0	51	10.5	17	3.5	8	1.6	120	24.7	2	0.4
Virgin Islands	13	21.7	0	0.0	7	11.7	0	0.0	0	0.0	8	13.3	1	1.7
FOURTH CIRCUIT	988	16.6	12	0.2	434	7.3	75	1.3	68	1.1	1,039	17.4	27	0.5
Maryland	226	28.4	2	0.3	134	16.8	6	0.8	17	2.1	135	17.0	0	0.0
North Carolina														
Eastern	190	29.8	0	0.0	9	1.4	4	0.6	7	1.1	76	11.9	6	0.9
Middle	59	11.9	0	0.0	2	0.4	3	0.6	0	0.0	91	18.3	1	0.2
Western	148	23.5	0	0.0	65	10.3	6	1.0	7	1.1	72	11.4	1	0.2
South Carolina	134	17.9	3	0.4	57	7.6	5	0.7	4	0.5	109	14.5	3	0.4
Virginia														
Eastern	64	4.0	3	0.2	43	2.7	49	3.0	26	1.6	337	20.8	15	0.9
Western	115	28.7	0	0.0	57	14.2	2	0.5	3	0.7	66	16.5	1	0.2
West Virginia														
Northern	25	7.3	3	0.9	48	14.1	0	0.0	1	0.3	72	21.1	0	0.0
Southern	27	9.2	1	0.3	19	6.5	0	0.0	3	1.0	81	27.6	0	0.0

Table 2 (cont.)

CIRCUIT District	TOTAL	WITHIN GUIDELINE RANGE		UPWARD DEPARTURE		UPWARD DEPARTURE W/ BOOKER		ABOVE RANGE W/ BOOKER		REMAINING ABOVE RANGE	
		N	%	N	%	N	%	N	%	N	%
FIFTH CIRCUIT	16,462	9,992	60.7	90	0.5	34	0.2	227	1.4	9	0.1
Louisiana											
Eastern	311	176	56.6	1	0.3	0	0.0	4	1.3	0	0.0
Middle	180	97	53.9	1	0.6	0	0.0	0	0.0	0	0.0
Western	267	165	61.8	4	1.5	1	0.4	5	1.9	0	0.0
Mississippi											
Northern	217	129	59.4	0	0.0	0	0.0	4	1.8	0	0.0
Southern	268	180	67.2	1	0.4	0	0.0	1	0.4	1	0.4
Texas											
Eastern	924	533	57.7	14	1.5	2	0.2	7	0.8	1	0.1
Northern	1,370	717	52.3	7	0.5	18	1.3	43	3.1	1	0.1
Southern	6,375	3,546	55.6	52	0.8	13	0.2	58	0.9	1	0.0
Western	6,550	4,449	67.9	10	0.2	0	0.0	105	1.6	5	0.1
SIXTH CIRCUIT	5,200	2,160	41.5	21	0.4	11	0.2	52	1.0	2	0.0
Kentucky											
Eastern	596	286	48.0	3	0.5	4	0.7	12	2.0	0	0.0
Western	289	130	45.0	0	0.0	0	0.0	0	0.0	0	0.0
Michigan											
Eastern	955	397	41.6	2	0.2	0	0.0	8	0.8	0	0.0
Western	386	215	55.7	3	0.8	3	0.8	5	1.3	0	0.0
Ohio											
Northern	760	299	39.3	2	0.3	1	0.1	4	0.5	1	0.1
Southern	640	172	26.9	2	0.3	2	0.3	10	1.6	0	0.0
Tennessee											
Eastern	814	381	46.8	4	0.5	1	0.1	7	0.9	0	0.0
Middle	268	81	30.2	4	1.5	0	0.0	3	1.1	0	0.0
Western	492	199	40.4	1	0.2	0	0.0	3	0.6	1	0.2
SEVENTH CIRCUIT	2,921	1,077	36.9	8	0.3	9	0.3	44	1.5	3	0.1
Illinois											
Central	416	152	36.5	1	0.2	1	0.2	9	2.2	0	0.0
Northern	872	234	26.8	3	0.3	0	0.0	3	0.3	1	0.1
Southern	373	230	61.7	1	0.3	7	1.9	8	2.1	1	0.3
Indiana											
Northern	369	178	48.2	1	0.3	0	0.0	4	1.1	0	0.0
Southern	389	160	41.1	1	0.3	1	0.3	9	2.3	1	0.3
Wisconsin											
Eastern	350	72	20.6	0	0.0	0	0.0	10	2.9	0	0.0
Western	152	51	33.6	1	0.7	0	0.0	1	0.7	0	0.0
EIGHTH CIRCUIT	4,621	2,106	45.6	30	0.6	11	0.2	85	1.8	2	0.0
Arkansas											
Eastern	354	165	46.6	3	0.8	1	0.3	8	2.3	1	0.3
Western	319	167	52.4	2	0.6	0	0.0	5	1.6	0	0.0
Iowa											
Northern	368	212	57.6	10	2.7	1	0.3	6	1.6	0	0.0
Southern	299	82	27.4	0	0.0	2	0.7	10	3.3	0	0.0
Minnesota	291	107	36.8	2	0.7	0	0.0	4	1.4	0	0.0
Missouri											
Eastern	697	298	42.8	0	0.0	3	0.4	15	2.2	0	0.0
Western	827	345	41.7	2	0.2	0	0.0	24	2.9	0	0.0
Nebraska	594	253	42.6	1	0.2	0	0.0	5	0.8	0	0.0
North Dakota	338	156	46.2	2	0.6	1	0.3	0	0.0	1	0.3
South Dakota	534	321	60.1	8	1.5	3	0.6	8	1.5	0	0.0

Table 2 (cont.)

CIRCUIT District	§5K1.1 SUBSTANTIAL ASSISTANCE		§5K3.1 EARLY DISPOSITION		OTHER GOV'T SPONSORED		DOWNWARD DEPARTURE		DOWNWARD DEPARTURE W/ BOOKER		BELOW RANGE W/ BOOKER		REMAINING BELOW RANGE	
	N	%	N	%	N	%	N	%	N	%	N	%	N	%
FIFTH CIRCUIT	1,513	9.2	715	4.3	742	4.5	846	5.1	96	0.6	2,046	12.4	152	0.9
Louisiana														
Eastern	44	14.1	0	0.0	6	1.9	8	2.6	4	1.3	67	21.5	1	0.3
Middle	35	19.4	8	4.4	1	0.6	0	0.0	0	0.0	37	20.6	1	0.6
Western	33	12.4	0	0.0	2	0.7	4	1.5	5	1.9	48	18.0	0	0.0
Mississippi														
Northern	41	18.9	0	0.0	6	2.8	1	0.5	0	0.0	36	16.6	0	0.0
Southern	35	13.1	0	0.0	4	1.5	2	0.7	2	0.7	37	13.8	5	1.9
Texas														
Eastern	108	11.7	6	0.6	168	18.2	4	0.4	5	0.5	76	8.2	0	0.0
Northern	255	18.6	6	0.4	66	4.8	17	1.2	6	0.4	232	16.9	2	0.1
Southern	476	7.5	552	8.7	290	4.5	633	9.9	27	0.4	720	11.3	7	0.1
Western	486	7.4	143	2.2	199	3.0	177	2.7	47	0.7	793	12.1	136	2.1
SIXTH CIRCUIT	1,170	22.5	25	0.5	505	9.7	76	1.5	48	0.9	1,110	21.3	20	0.4
Kentucky														
Eastern	82	13.8	0	0.0	46	7.7	3	0.5	1	0.2	158	26.5	1	0.2
Western	58	20.1	8	2.8	51	17.6	10	3.5	2	0.7	29	10.0	1	0.3
Michigan														
Eastern	189	19.8	2	0.2	60	6.3	12	1.3	8	0.8	277	29.0	0	0.0
Western	59	15.3	1	0.3	8	2.1	10	2.6	7	1.8	73	18.9	2	0.5
Ohio														
Northern	214	28.2	0	0.0	57	7.5	9	1.2	3	0.4	165	21.7	5	0.7
Southern	172	26.9	9	1.4	136	21.3	8	1.3	13	2.0	112	17.5	4	0.6
Tennessee														
Eastern	233	28.6	0	0.0	47	5.8	5	0.6	1	0.1	132	16.2	3	0.4
Middle	61	22.8	0	0.0	62	23.1	13	4.9	5	1.9	39	14.6	0	0.0
Western	102	20.7	5	1.0	38	7.7	6	1.2	8	1.6	125	25.4	4	0.8
SEVENTH CIRCUIT	421	14.4	9	0.3	242	8.3	73	2.5	157	5.4	847	29.0	31	1.1
Illinois														
Central	97	23.3	0	0.0	44	10.6	8	1.9	8	1.9	96	23.1	0	0.0
Northern	102	11.7	6	0.7	24	2.8	37	4.2	97	11.1	351	40.3	14	1.6
Southern	27	7.2	0	0.0	16	4.3	4	1.1	35	9.4	38	10.2	6	1.6
Indiana														
Northern	68	18.4	1	0.3	20	5.4	4	1.1	2	0.5	83	22.5	8	2.2
Southern	60	15.4	0	0.0	63	16.2	1	0.3	3	0.8	90	23.1	0	0.0
Wisconsin														
Eastern	62	17.7	0	0.0	64	18.3	3	0.9	3	0.9	133	38.0	3	0.9
Western	5	3.3	2	1.3	11	7.2	16	10.5	9	5.9	56	36.8	0	0.0
EIGHTH CIRCUIT	649	14.0	86	1.9	416	9.0	63	1.4	45	1.0	1,106	23.9	22	0.5
Arkansas														
Eastern	43	12.1	0	0.0	20	5.6	7	2.0	6	1.7	96	27.1	4	1.1
Western	62	19.4	5	1.6	9	2.8	4	1.3	1	0.3	62	19.4	2	0.6
Iowa														
Northern	85	23.1	0	0.0	9	2.4	2	0.5	2	0.5	41	11.1	0	0.0
Southern	41	13.7	5	1.7	69	23.1	0	0.0	3	1.0	85	28.4	2	0.7
Minnesota	41	14.1	6	2.1	12	4.1	6	2.1	3	1.0	109	37.5	1	0.3
Missouri														
Eastern	57	8.2	0	0.0	115	16.5	1	0.1	5	0.7	201	28.8	2	0.3
Western	176	21.3	0	0.0	68	8.2	3	0.4	0	0.0	203	24.5	6	0.7
Nebraska	28	4.7	55	9.3	63	10.6	14	2.4	9	1.5	164	27.6	2	0.3
North Dakota	101	29.9	8	2.4	23	6.8	6	1.8	6	1.8	34	10.1	0	0.0
South Dakota	15	2.8	7	1.3	28	5.2	20	3.7	10	1.9	111	20.8	3	0.6

Table 2 (cont.)

CIRCUIT District	TOTAL	WITHIN GUIDELINE RANGE		UPWARD DEPARTURE		UPWARD DEPARTURE W/ BOOKER		ABOVE RANGE W/ BOOKER		REMAINING ABOVE RANGE	
		N	%	N	%	N	%	N	%	N	%
NINTH CIRCUIT	15,629	4,873	31.2	108	0.7	12	0.1	328	2.1	26	0.2
Alaska	156	48	30.8	0	0.0	1	0.6	1	0.6	0	0.0
Arizona	5,518	2,051	37.2	83	1.5	4	0.1	223	4.0	18	0.3
California											
Central	1,257	292	23.2	4	0.3	2	0.2	10	0.8	2	0.2
Eastern	909	313	34.4	2	0.2	0	0.0	9	1.0	1	0.1
Northern	700	251	35.9	1	0.1	0	0.0	14	2.0	1	0.1
Southern	3,911	644	16.5	7	0.2	2	0.1	19	0.5	3	0.1
Guam	99	45	45.5	0	0.0	0	0.0	0	0.0	0	0.0
Hawaii	290	100	34.5	0	0.0	0	0.0	4	1.4	0	0.0
Idaho	313	119	38.0	0	0.0	0	0.0	2	0.6	0	0.0
Montana	310	166	53.5	3	1.0	0	0.0	7	2.3	0	0.0
Nevada	508	257	50.6	3	0.6	1	0.2	8	1.6	0	0.0
Northern Mariana Islands	15	9	60.0	0	0.0	0	0.0	0	0.0	0	0.0
Oregon	586	206	35.2	1	0.2	0	0.0	9	1.5	1	0.2
Washington											
Eastern	389	176	45.2	2	0.5	1	0.3	20	5.1	0	0.0
Western	668	196	29.3	2	0.3	1	0.1	2	0.3	0	0.0
TENTH CIRCUIT	7,147	3,661	51.2	20	0.3	1	0.0	45	0.6	1	0.0
Colorado	539	162	30.1	0	0.0	0	0.0	9	1.7	0	0.0
Kansas	662	247	37.3	2	0.3	0	0.0	19	2.9	0	0.0
New Mexico	4,324	2,577	59.6	8	0.2	1	0.0	6	0.1	0	0.0
Oklahoma											
Eastern	89	51	57.3	0	0.0	0	0.0	1	1.1	0	0.0
Northern	250	94	37.6	0	0.0	0	0.0	1	0.4	0	0.0
Western	373	193	51.7	0	0.0	0	0.0	4	1.1	0	0.0
Utah	622	203	32.6	8	1.3	0	0.0	3	0.5	1	0.2
Wyoming	288	134	46.5	2	0.7	0	0.0	2	0.7	0	0.0
ELEVENTH CIRCUIT	6,731	3,521	52.3	7	0.1	3	0.0	92	1.4	7	0.1
Alabama											
Middle	223	97	43.5	1	0.4	0	0.0	3	1.3	1	0.4
Northern	440	258	58.6	1	0.2	0	0.0	10	2.3	1	0.2
Southern	397	209	52.6	0	0.0	0	0.0	2	0.5	0	0.0
Florida											
Middle	1,431	582	40.7	1	0.1	1	0.1	8	0.6	2	0.1
Northern	320	146	45.6	0	0.0	2	0.6	5	1.6	0	0.0
Southern	2,199	1,190	54.1	2	0.1	0	0.0	28	1.3	3	0.1
Georgia											
Middle	485	341	70.3	1	0.2	0	0.0	5	1.0	0	0.0
Northern	597	210	35.2	0	0.0	0	0.0	13	2.2	0	0.0
Southern	639	488	76.4	1	0.2	0	0.0	18	2.8	0	0.0

Table 2 (cont.)

CIRCUIT District	§5K1.1 SUBSTANTIAL ASSISTANCE		§5K3.1 EARLY DISPOSITION		OTHER GOV'T SPONSORED		DOWNWARD DEPARTURE		DOWNWARD DEPARTURE W/ BOOKER		BELOW RANGE W/ BOOKER		REMAINING BELOW RANGE	
	N	%	N	%	N	%	N	%	N	%	N	%	N	%
NINTH CIRCUIT	1,422	9.1	4,576	29.3	1,900	12.2	273	1.7	121	0.8	1,928	12.3	62	0.4
Alaska	21	13.5	0	0.0	33	21.2	1	0.6	2	1.3	49	31.4	0	0.0
Arizona	216	3.9	1,909	34.6	455	8.2	35	0.6	11	0.2	507	9.2	6	0.1
California														
Central	203	16.1	173	13.8	216	17.2	35	2.8	44	3.5	250	19.9	26	2.1
Eastern	151	16.6	128	14.1	120	13.2	9	1.0	9	1.0	164	18.0	3	0.3
Northern	67	9.6	41	5.9	157	22.4	6	0.9	5	0.7	156	22.3	1	0.1
Southern	314	8.0	2,192	56.0	293	7.5	153	3.9	24	0.6	237	6.1	23	0.6
Guam	37	37.4	0	0.0	2	2.0	1	1.0	0	0.0	13	13.1	1	1.0
Hawaii	87	30.0	0	0.0	5	1.7	1	0.3	2	0.7	91	31.4	0	0.0
Idaho	87	27.8	11	3.5	23	7.3	10	3.2	5	1.6	56	17.9	0	0.0
Montana	48	15.5	0	0.0	30	9.7	2	0.6	2	0.6	52	16.8	0	0.0
Nevada	54	10.6	26	5.1	74	14.6	12	2.4	1	0.2	70	13.8	2	0.4
Northern Mariana Islands	3	20.0	0	0.0	1	6.7	1	6.7	0	0.0	1	6.7	0	0.0
Oregon	74	12.6	16	2.7	163	27.8	1	0.2	2	0.3	113	19.3	0	0.0
Washington														
Eastern	26	6.7	24	6.2	85	21.9	4	1.0	7	1.8	44	11.3	0	0.0
Western	34	5.1	56	8.4	243	36.4	2	0.3	7	1.0	125	18.7	0	0.0
TENTH CIRCUIT	471	6.6	1,283	18.0	637	8.9	66	0.9	62	0.9	887	12.4	13	0.2
Colorado	134	24.9	80	14.8	43	8.0	6	1.1	6	1.1	98	18.2	1	0.2
Kansas	130	19.6	10	1.5	164	24.8	8	1.2	3	0.5	78	11.8	1	0.2
New Mexico	73	1.7	1,028	23.8	253	5.9	33	0.8	43	1.0	296	6.8	6	0.1
Oklahoma														
Eastern	15	16.9	0	0.0	8	9.0	2	2.2	0	0.0	12	13.5	0	0.0
Northern	41	16.4	2	0.8	5	2.0	4	1.6	3	1.2	100	40.0	0	0.0
Western	30	8.0	0	0.0	2	0.5	0	0.0	0	0.0	142	38.1	2	0.5
Utah	25	4.0	150	24.1	115	18.5	8	1.3	3	0.5	104	16.7	2	0.3
Wyoming	23	8.0	13	4.5	47	16.3	5	1.7	4	1.4	57	19.8	1	0.3
ELEVENTH CIRCUIT	924	13.7	45	0.7	462	6.9	81	1.2	47	0.7	1,516	22.5	26	0.4
Alabama														
Middle	65	29.1	3	1.3	14	6.3	0	0.0	3	1.3	36	16.1	0	0.0
Northern	77	17.5	0	0.0	20	4.5	3	0.7	3	0.7	66	15.0	1	0.2
Southern	71	17.9	0	0.0	3	0.8	2	0.5	0	0.0	110	27.7	0	0.0
Florida														
Middle	275	19.2	23	1.6	46	3.2	22	1.5	17	1.2	444	31.0	10	0.7
Northern	69	21.6	1	0.3	5	1.6	18	5.6	4	1.3	69	21.6	1	0.3
Southern	190	8.6	11	0.5	150	6.8	22	1.0	18	0.8	573	26.1	12	0.5
Georgia														
Middle	52	10.7	6	1.2	13	2.7	2	0.4	0	0.0	64	13.2	1	0.2
Northern	60	10.1	0	0.0	182	30.5	10	1.7	1	0.2	121	20.3	0	0.0
Southern	65	10.2	1	0.2	29	4.5	2	0.3	1	0.2	33	5.2	1	0.2

¹ Of the 75,836 cases, 1,710 were excluded because information was missing from the submitted documents that prevented the comparison of the sentence and the guideline range. The information needed to determine the relationship between the sentence imposed and the guideline range was missing in five percent or more of the cases received from: Arizona (16.4%), Western Louisiana (8.9%), Eastern North Carolina (8.5%), and Middle Tennessee (7.9%). Descriptions of variables used in this table are provided in Appendix A.

Table 3

**SENTENCES RELATIVE TO THE GUIDELINE RANGE
BY EACH PRIMARY OFFENSE CATEGORY¹
Fiscal Year 2014**

PRIMARY OFFENSE	TOTAL	WITHIN GUIDELINE RANGE		UPWARD DEPARTURES		UPWARD DEPARTURES W/ <i>BOOKER</i>		ABOVE RANGE W/ <i>BOOKER</i>		REMAINING ABOVE RANGE	
		N	%	N	%	N	%	N	%	N	%
TOTAL	74,126	34,117	46.0	343	0.5	123	0.2	1,104	1.5	75	0.1
Murder	75	44	58.7	3	4.0	0	0.0	2	2.7	0	0.0
Manslaughter	49	27	55.1	6	12.2	1	2.0	3	6.1	0	0.0
Kidnapping/Hostage Taking	50	16	32.0	0	0.0	0	0.0	0	0.0	0	0.0
Sexual Abuse	545	295	54.1	10	1.8	2	0.4	14	2.6	1	0.2
Assault	738	402	54.5	10	1.4	3	0.4	38	5.1	0	0.0
Robbery	777	403	51.9	7	0.9	7	0.9	21	2.7	1	0.1
Arson	53	22	41.5	2	3.8	3	5.7	2	3.8	0	0.0
Drugs - Trafficking	21,312	5,816	27.3	56	0.3	18	0.1	87	0.4	14	0.1
Drugs - Communication Facility	343	129	37.6	0	0.0	0	0.0	5	1.5	0	0.0
Drugs - Simple Possession	1,392	1,162	83.5	7	0.5	1	0.1	195	14.0	6	0.4
Firearms	7,913	4,250	53.7	61	0.8	36	0.5	238	3.0	17	0.2
Burglary/B&E	37	23	62.2	1	2.7	0	0.0	1	2.7	0	0.0
Auto Theft	86	50	58.1	2	2.3	0	0.0	3	3.5	1	1.2
Larceny	1,344	829	61.7	4	0.3	2	0.1	9	0.7	1	0.1
Fraud	7,391	3,202	43.3	23	0.3	9	0.1	91	1.2	8	0.1
Embezzlement	328	192	58.5	0	0.0	0	0.0	2	0.6	0	0.0
Forgery/Counterfeiting	710	418	58.9	5	0.7	0	0.0	22	3.1	3	0.4
Bribery	238	77	32.4	0	0.0	0	0.0	1	0.4	0	0.0
Tax	648	198	30.6	0	0.0	0	0.0	4	0.6	1	0.2
Money Laundering	885	253	28.6	4	0.5	2	0.2	6	0.7	2	0.2
Racketeering/Extortion	862	367	42.6	6	0.7	2	0.2	21	2.4	0	0.0
Gambling/Lottery	117	53	45.3	0	0.0	0	0.0	0	0.0	0	0.0
Civil Rights	56	19	33.9	2	3.6	0	0.0	1	1.8	0	0.0
Immigration	22,064	12,558	56.9	97	0.4	22	0.1	221	1.0	15	0.1
Child Pornography	1,924	600	31.2	14	0.7	3	0.2	33	1.7	0	0.0
Prison Offenses	437	306	70.0	1	0.2	2	0.5	12	2.7	1	0.2
Administration of Justice Offenses	1,229	690	56.1	12	1.0	8	0.7	26	2.1	3	0.2
Environmental/Wildlife	181	105	58.0	0	0.0	0	0.0	1	0.6	0	0.0
National Defense	108	38	35.2	1	0.9	0	0.0	1	0.9	0	0.0
Antitrust	19	3	15.8	0	0.0	0	0.0	2	10.5	0	0.0
Food & Drug	108	74	68.5	0	0.0	0	0.0	2	1.9	0	0.0
Other Miscellaneous Offenses	2,107	1,496	71.0	9	0.4	2	0.1	40	1.9	1	0.0

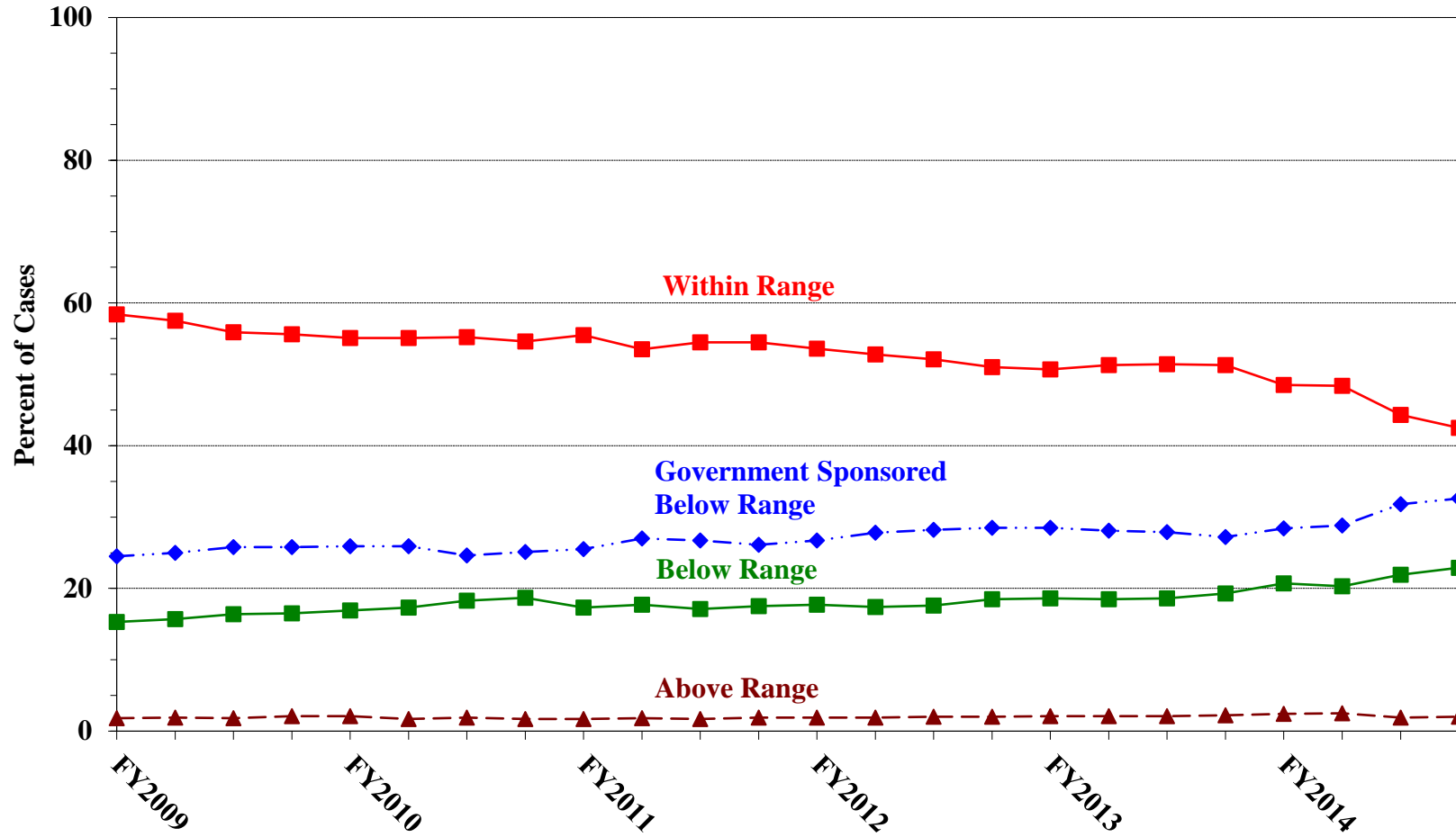
Table 3 (cont.)

PRIMARY OFFENSE	§5K1.1 SUBSTANTIAL ASSISTANCE		§5K3.1 EARLY DISPOSITION		OTHER GOV'T SPONSORED		BELOW DOWNWARD DEPARTURE		DOWNWARD DEPARTURE W/ BOOKER		BELOW RANGE W/ BOOKER		REMAINING BELOW RANGE	
	N	%	N	%	N	%	N	%	N	%	N	%	N	%
TOTAL	9,482	12.8	6,944	9.4	6,068	8.2	1,757	2.4	807	1.1	12,894	17.4	412	0.6
Murder	10	13.3	0	0.0	8	10.7	0	0.0	1	1.3	7	9.3	0	0.0
Manslaughter	0	0.0	0	0.0	5	10.2	2	4.1	1	2.0	4	8.2	0	0.0
Kidnapping/Hostage Taking	20	40.0	0	0.0	3	6.0	5	10.0	1	2.0	5	10.0	0	0.0
Sexual Abuse	30	5.5	0	0.0	99	18.2	4	0.7	7	1.3	81	14.9	2	0.4
Assault	8	1.1	7	0.9	124	16.8	23	3.1	9	1.2	108	14.6	6	0.8
Robbery	95	12.2	0	0.0	69	8.9	16	2.1	12	1.5	139	17.9	7	0.9
Arson	6	11.3	0	0.0	8	15.1	0	0.0	0	0.0	10	18.9	0	0.0
Drugs - Trafficking	5,589	26.2	1,480	6.9	2,980	14.0	328	1.5	331	1.6	4,548	21.3	65	0.3
Drugs - Communication Facility	51	14.9	2	0.6	43	12.5	4	1.2	4	1.2	104	30.3	1	0.3
Drugs - Simple Possession	2	0.1	2	0.1	4	0.3	3	0.2	1	0.1	8	0.6	1	0.1
Firearms	861	10.9	15	0.2	661	8.4	153	1.9	85	1.1	1,502	19.0	34	0.4
Burglary/B&E	5	13.5	0	0.0	0	0.0	1	2.7	0	0.0	6	16.2	0	0.0
Auto Theft	17	19.8	0	0.0	3	3.5	0	0.0	0	0.0	10	11.6	0	0.0
Larceny	82	6.1	4	0.3	88	6.5	25	1.9	16	1.2	265	19.7	19	1.4
Fraud	1,414	19.1	6	0.1	545	7.4	148	2.0	114	1.5	1,777	24.0	54	0.7
Embezzlement	16	4.9	0	0.0	19	5.8	6	1.8	2	0.6	89	27.1	2	0.6
Forgery/Counterfeiting	68	9.6	0	0.0	28	3.9	8	1.1	11	1.5	138	19.4	9	1.3
Bribery	56	23.5	2	0.8	15	6.3	5	2.1	6	2.5	73	30.7	3	1.3
Tax	85	13.1	0	0.0	75	11.6	18	2.8	13	2.0	247	38.1	7	1.1
Money Laundering	220	24.9	4	0.5	127	14.4	26	2.9	9	1.0	228	25.8	4	0.5
Racketeering/Extortion	191	22.2	0	0.0	92	10.7	13	1.5	12	1.4	158	18.3	0	0.0
Gambling/Lottery	8	6.8	0	0.0	23	19.7	1	0.9	1	0.9	31	26.5	0	0.0
Civil Rights	11	19.6	0	0.0	8	14.3	1	1.8	3	5.4	11	19.6	0	0.0
Immigration	295	1.3	5,411	24.5	371	1.7	857	3.9	102	0.5	1,952	8.8	163	0.7
Child Pornography	67	3.5	1	0.1	361	18.8	48	2.5	40	2.1	748	38.9	9	0.5
Prison Offenses	7	1.6	1	0.2	25	5.7	10	2.3	3	0.7	66	15.1	3	0.7
Administration of Justice Offenses	86	7.0	4	0.3	112	9.1	18	1.5	8	0.7	258	21.0	4	0.3
Environmental/Wildlife	18	9.9	1	0.6	26	14.4	2	1.1	1	0.6	24	13.3	3	1.7
National Defense	32	29.6	1	0.9	12	11.1	1	0.9	1	0.9	20	18.5	1	0.9
Antitrust	11	57.9	0	0.0	0	0.0	0	0.0	1	5.3	2	10.5	0	0.0
Food & Drug	6	5.6	0	0.0	5	4.6	1	0.9	0	0.0	20	18.5	0	0.0
Other Miscellaneous Offenses	115	5.5	3	0.1	129	6.1	30	1.4	12	0.6	255	12.1	15	0.7

¹ Of the 75,836 cases, 1,710 were excluded because information was missing from the submitted documents that prevented the comparison of the sentence and the guideline range. Descriptions of variables used in this table are provided in Appendix A.

SOURCE: U.S. Sentencing Commission, 2014 Datafile, USSCFY14.

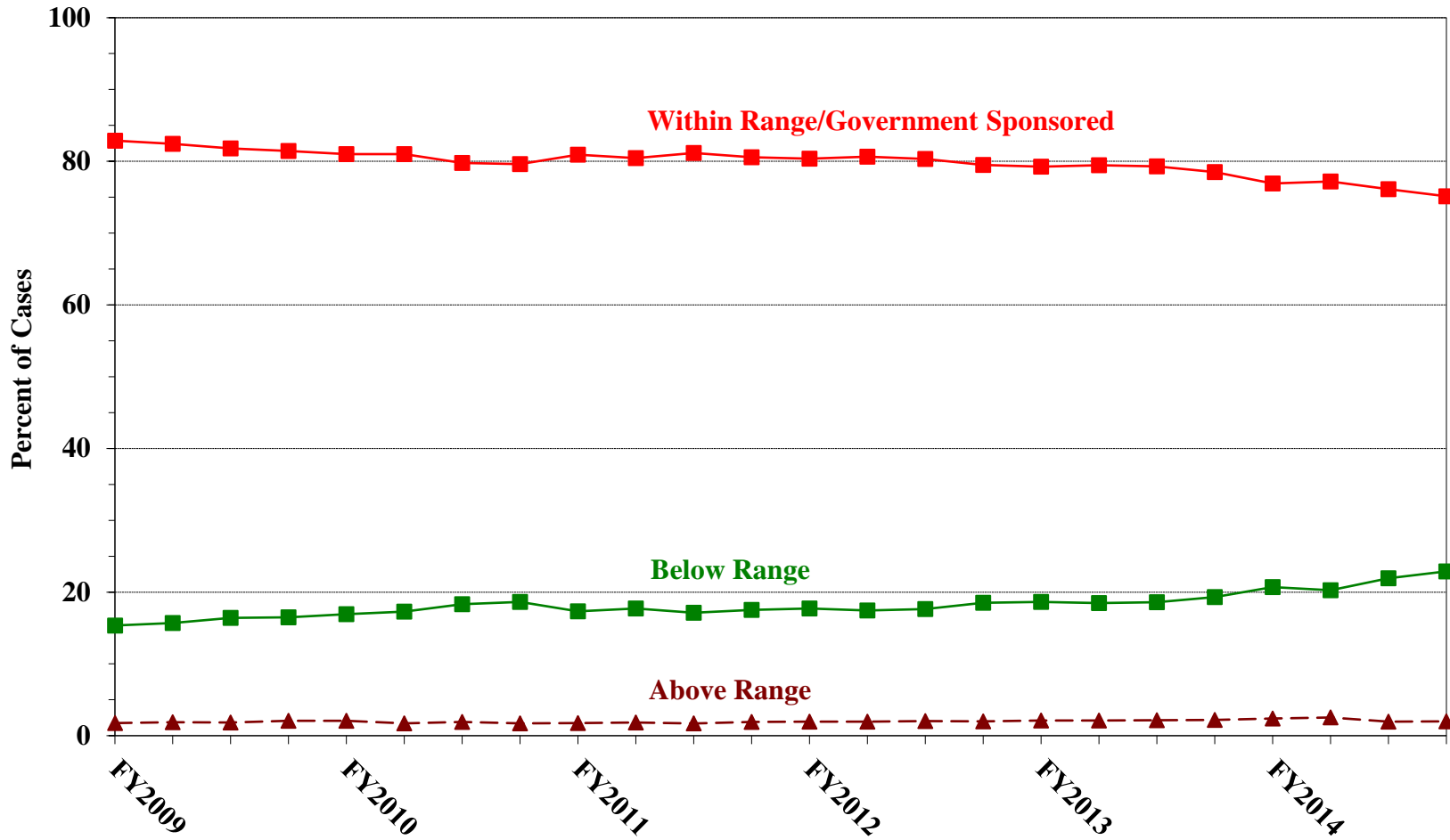
Figure A
QUARTERLY DATA FOR WITHIN RANGE AND OUT OF RANGE SENTENCES¹
Fiscal Years 2009 - 2014



¹ Descriptions of variables used in this figure are provided in Appendix A.

Figure B
QUARTERLY DATA FOR WITHIN RANGE/GOVERNMENT SPONSORED
AND OTHER OUT OF RANGE SENTENCES¹

Fiscal Years 2009 - 2014



¹ Descriptions of variables used in this figure are provided in Appendix A.

Table 4

QUARTERLY DATA FOR WITHIN RANGE AND OUT OF RANGE SENTENCES¹
Fiscal Years 2009 - 2014

FISCAL YEAR	WITHIN GUIDELINE RANGE	GOVERNMENT SPONSORED BELOW RANGE	BELOW RANGE	ABOVE RANGE
Quarter	%	%	%	%
FY2009				
1st Quarter	58.4	24.5	15.3	1.8
2ndQuarter	57.5	25.0	15.7	1.9
3rd Quarter	55.9	25.8	16.4	1.8
4th Quarter	55.6	25.8	16.5	2.1
FY2010				
1st Quarter	55.1	25.9	16.9	2.1
2ndQuarter	55.1	25.9	17.3	1.7
3rd Quarter	55.2	24.6	18.3	1.9
4th Quarter	54.6	25.1	18.7	1.7
FY2011				
1st Quarter	55.5	25.5	17.3	1.7
2ndQuarter	53.5	27.0	17.7	1.8
3rd Quarter	54.5	26.7	17.1	1.7
4th Quarter	54.5	26.1	17.5	1.9
FY2012				
1st Quarter	53.6	26.7	17.7	1.9
2ndQuarter	52.8	27.8	17.4	1.9
3rd Quarter	52.1	28.2	17.6	2.0
4th Quarter	51.0	28.5	18.5	2.0
FY2013				
1st Quarter	50.7	28.5	18.6	2.1
2ndQuarter	51.3	28.1	18.5	2.1
3rd Quarter	51.4	27.9	18.6	2.1
4th Quarter	51.3	27.2	19.3	2.2
FY2014				
1st Quarter	48.5	28.4	20.7	2.4
2ndQuarter	48.4	28.8	20.3	2.5
3rd Quarter	44.3	31.8	21.9	1.9
4th Quarter	42.5	32.6	22.9	2.0

¹ Descriptions of variables used in this table are provided in Appendix A.

Table 5 (cont.)

Guideline	Total	Within Guideline Range	Upward				Government Sponsored			Downward		Below Range	
			Gdline Only	with Booker	Above Range with Booker	All Others	§5K1.1	§5K3.1	Other Gov't	Gdline Only	with Booker	with Booker	All Others
§2N1.3	0	0	0	0	0	0	0	0	0	0	0	0	0
§2N2.1	53	53	0	0	0	0	0	0	0	0	0	0	0
§2N3.1	0	0	0	0	0	0	0	0	0	0	0	0	0
§2P1.1	224	152	0	1	7	1	5	0	10	6	1	40	1
§2P1.2	135	98	1	0	3	0	1	0	12	1	0	18	1
§2P1.3	8	7	0	0	0	0	0	0	0	0	0	0	1
§2P1.4	0	0	0	0	0	0	0	0	0	0	0	0	0
§2Q1.1	1	1	0	0	0	0	0	0	0	0	0	0	0
§2Q1.2	43	14	0	0	0	0	9	0	8	3	0	8	1
§2Q1.3	30	7	0	0	0	0	7	0	7	1	1	6	1
§2Q1.4	0	0	0	0	0	0	0	0	0	0	0	0	0
§2Q1.5	0	0	0	0	0	0	0	0	0	0	0	0	0
§2Q1.6	0	0	0	0	0	0	0	0	0	0	0	0	0
§2Q2.1	119	72	0	0	1	0	8	0	15	2	0	18	3
§2Q2.2	0	0	0	0	0	0	0	0	0	0	0	0	0
§2R1.1	9	2	0	0	2	0	3	0	0	0	0	2	0
§2S1.1	1,205	276	3	3	14	2	364	5	197	30	17	291	3
§2S1.2	0	0	0	0	0	0	0	0	0	0	0	0	0
§2S1.3	280	120	3	0	4	0	33	1	41	9	3	63	3
§2S1.4	0	0	0	0	0	0	0	0	0	0	0	0	0
§2T1.1	565	169	1	0	4	1	79	0	59	14	12	222	4
§2T1.2	0	0	0	0	0	0	0	0	0	0	0	0	0
§2T1.3	0	0	0	0	0	0	0	0	0	0	0	0	0
§2T1.4	172	59	1	0	0	0	31	0	18	5	5	51	2
§2T1.5	0	0	0	0	0	0	0	0	0	0	0	0	0
§2T1.6	41	8	0	0	0	0	3	0	3	1	1	24	1
§2T1.7	0	0	0	0	0	0	0	0	0	0	0	0	0
§2T1.8	6	6	0	0	0	0	0	0	0	0	0	0	0
§2T1.9	25	4	0	0	0	0	15	0	0	1	0	5	0
§2T2.1	3	1	0	0	0	0	0	0	0	0	0	2	0
§2T2.2	0	0	0	0	0	0	0	0	0	0	0	0	0
§2T3.1	13	7	0	0	0	0	2	0	2	0	0	2	0
§2T3.2	0	0	0	0	0	0	0	0	0	0	0	0	0
§2T4.1	0	0	0	0	0	0	0	0	0	0	0	0	0
§2X1.1	26	14	1	0	1	0	2	0	4	0	0	4	0
§2X2.1	0	0	0	0	0	0	0	0	0	0	0	0	0
§2X3.1	95	26	0	1	1	0	23	0	16	4	1	23	0
§2X4.1	398	210	8	0	9	0	45	1	45	7	2	69	2
§2X5.1	0	0	0	0	0	0	0	0	0	0	0	0	0
§2X5.2	232	217	2	0	2	0	0	0	2	2	0	4	3
§2X6.1	0	0	0	0	0	0	0	0	0	0	0	0	0
§2X7.1	1	0	0	0	0	0	0	1	0	0	0	0	0
§2X7.2	0	0	0	0	0	0	0	0	0	0	0	0	0
TOTAL	68,863	29,908	327	114	863	63	9,415	6,551	5,941	1,729	797	12,781	374

¹ Of the 75,836 cases, 6,973 were excluded due to one or both of the following reasons: information was missing from the submitted documents that prevented the comparison of the sentence and the guideline range (1,710) or missing guideline applied (6,955). Descriptions of variables used in this table are provided in Appendix A.

² In 1,069 cases, the defendant was convicted of one or more counts of violating 18 U.S.C. § 1028A. By statute, the punishment for this crime must be served consecutively to any other punishment; therefore, in these 1,069 cases the conviction for this crime did not affect the guideline calculation for the underlying offense.

³ In 2,272 cases, the defendant was convicted of one or more counts of violating 18 U.S.C. § 924(c). By statute, the punishment for this crime must be served consecutively to any other punishment; therefore, in these 2,272 cases the conviction for this crime did not affect the guideline calculation for the underlying offense.

Table 6

ATTRIBUTION CATEGORY FOR CASES OUTSIDE OF THE GUIDELINE RANGE¹
Fiscal Year 2014

	TOTAL CASES	Pursuant to a Plea Agreement									
		§5K1.1 Plea Agreement		§5K3.1 Plea Agreement		Binding Plea Accepted by Court		Plea w/ Departure Court Finds Reasonable		Plea Agreement States Gov't Will Not Oppose	
		N	%	N	%	N	%	N	%	N	%
TOTAL	40,009	5,809	14.5	6,519	16.3	3,854	9.6	2,926	7.3	554	1.4
Above Range	1,645	10	0.6	12	0.7	295	17.9	144	8.8	2	0.1
Upward Departure From Guideline Range	343	0	0.0	0	0.0	118	34.4	56	16.3	0	0.0
Upward Departure With <i>Booker</i> /18 U.S.C. § 3553	123	0	0.0	0	0.0	14	11.4	8	6.5	0	0.0
Above Guideline Range With <i>Booker</i> /18 U.S.C. § 3553	1,104	0	0.0	0	0.0	151	13.7	71	6.4	1	0.1
All Remaining Cases Above Guideline Range	75	10	13.3	12	16.0	12	16.0	9	12.0	1	1.3
Government Sponsored Below Range	22,494	5,799	25.8	6,507	28.9	3,559	15.8	2,782	12.4	552	2.5
§5K1.1 Substantial Assistance Departure	9,482	5,799	61.2	194	2.0	190	2.0	318	3.4	50	0.5
§5K3.1 Early Disposition Program Departure	6,944	0	0.0	6,313	90.9	1,328	19.1	714	10.3	78	1.1
Other Government Sponsored Below Range	6,068	0	0.0	0	0.0	2,041	33.6	1,750	28.8	424	7.0
Non-Government Sponsored Below Range	15,870	0	0.0	0	0.0	0	0.0	0	0.0	0	0.0
Downward Departure From Guideline Range	1,757	0	0.0	0	0.0	0	0.0	0	0.0	0	0.0
Downward Departure With <i>Booker</i> /18 U.S.C. § 3553	807	0	0.0	0	0.0	0	0.0	0	0.0	0	0.0
Below Guideline Range With <i>Booker</i> /18 U.S.C. § 3553	12,894	0	0.0	0	0.0	0	0.0	0	0.0	0	0.0
All Remaining Cases Below Guideline Range	412	0	0.0	0	0.0	0	0.0	0	0.0	0	0.0

Table 6 (cont.)

	Pursuant to a Motion Not in a Plea Agreement													
	§5K1.1 Government Motion		§5K3.1 Government Motion		Other Government Motion		Defense Motion/ Government Did Not Object		Defense Motion/ Government Did Object		Other than a Plea/Motion by Parties		No Information Available	
	N	%	N	%	N	%	N	%	N	%	N	%	N	%
TOTAL	3,475	8.7	151	0.4	3,281	8.2	6,804	17.0	5,047	12.6	6,448	16.1	4,114	10.3
Above Range	4	0.2	0	0.0	217	13.2	15	0.9	6	0.4	638	38.8	414	25.2
Upward Departure From Guideline Range	0	0.0	0	0.0	50	14.6	4	1.2	0	0.0	105	30.6	37	10.8
Upward Departure With <i>Booker</i> / 18 U.S.C. § 3553	0	0.0	0	0.0	37	30.1	1	0.8	2	1.6	77	62.6	8	6.5
Above Guideline Range With <i>Booker</i> / 18 U.S.C. § 3553	0	0.0	0	0.0	125	11.3	10	0.9	4	0.4	442	40.0	328	29.7
All Remaining Cases Above Guideline Range	4	5.3	0	0.0	5	6.7	0	0.0	0	0.0	14	18.7	41	54.7
Government Sponsored Below Range	3,471	15.4	151	0.7	3,064	13.6	2,000	8.9	1,058	4.7	1,279	5.7	539	2.4
§5K1.1 Substantial Assistance Departure	3,471	36.6	11	0.1	793	8.4	967	10.2	390	4.1	747	7.9	153	1.6
§5K3.1 Early Disposition Program Departure	0	0.0	140	2.0	281	4.0	315	4.5	370	5.3	212	3.1	238	3.4
Other Government Sponsored Below Range	0	0.0	0	0.0	1,990	32.8	718	11.8	298	4.9	320	5.3	148	2.4
Non-Government Sponsored Below Range	0	0.0	0	0.0	0	0.0	4,789	30.2	3,983	25.1	4,531	28.6	3,161	19.9
Downward Departure From Guideline Range	0	0.0	0	0.0	0	0.0	859	48.9	244	13.9	464	26.4	247	14.1
Downward Departure With <i>Booker</i> / 18 U.S.C. § 3553	0	0.0	0	0.0	0	0.0	242	30.0	243	30.1	318	39.4	128	15.9
Below Guideline Range With <i>Booker</i> / 18 U.S.C. § 3553	0	0.0	0	0.0	0	0.0	3,688	28.6	3,492	27.1	3,738	29.0	2,389	18.5
All Remaining Cases Below Guideline Range	0	0.0	0	0.0	0	0.0	0	0.0	4	1.0	11	2.7	397	96.4

¹ Multiple attributions may be made on the SOR. Therefore, the numbers reported in this table may exceed the number of total cases. For example, among SORs with an attribution, 7,632 cases indicated more than one attribution. Note that only outside of the range cases are included in this table. Descriptions of variables used in this table are provided in Appendix A.

Table 7

**§5K1.1 SUBSTANTIAL ASSISTANCE DEPARTURE CASES: DEGREE OF
DECREASE FOR OFFENDERS IN EACH PRIMARY OFFENSE CATEGORY¹
Fiscal Year 2014**

PRIMARY OFFENSE	N	Median Sentence in Months	Median Decrease in Months From Guideline Minimum	Median Percent Decrease From Guideline Minimum
TOTAL	9,082	34	35	52.0
Murder	7	156	204	56.7
Manslaughter	0	--	--	--
Kidnapping/Hostage Taking	16	84	93	61.5
Sexual Abuse	28	81	54	37.5
Assault	8	33	28	48.0
Robbery	93	41	22	40.4
Arson	6	33	29	51.2
Drugs - Trafficking	5,351	47	46	50.0
Drugs - Communication Facility	49	12	19	59.9
Drugs - Simple Possession	1	--	--	--
Firearms	808	60	40	44.5
Burglary/B&E	5	27	11	18.2
Auto Theft	17	15	18	58.8
Larceny	81	12	12	51.4
Fraud	1,369	7	21	75.8
Embezzlement	14	11	7	67.5
Forgery/Counterfeiting	67	5	8	60.9
Bribery	56	6	19	70.0
Tax	83	0	15	100.0
Money Laundering	218	12	25	75.8
Racketeering/Extortion	179	37	35	50.0
Gambling/Lottery	7	0	12	100.0
Civil Rights	10	30	36	62.5
Immigration	286	15	12	45.5
Child Pornography	66	97	74	42.2
Prison Offenses	7	12	6	33.3
Administration of Justice Offenses	85	0	12	100.0
Environmental/Wildlife	17	0	12	100.0
National Defense	31	24	22	47.8
Antitrust	3	12	15	55.4
Food & Drug	6	0	15	100.0
Other Miscellaneous Offenses	108	12	18	68.5

¹ Of the 75,836 cases, 9,482 received a §5K1.1 substantial assistance departure. Of these, 9,178 cases had complete guideline application information. Due to an inability to calculate the extent of departure for cases with a guideline minimum of life, an additional 91 cases were also excluded from this table. Of the remaining 9,087 cases, five were excluded due to missing sentence information. Note that the information presented in this table does include sentences of probation, but does not include any time of alternative confinement as described in USSG §5C1.1. Descriptions of variables used in this table are provided in Appendix A.

**§5K3.1 EARLY DISPOSITION PROGRAM DEPARTURE CASES: DEGREE OF
DECREASE FOR OFFENDERS IN EACH PRIMARY OFFENSE CATEGORY¹
Fiscal Year 2014**

PRIMARY OFFENSE	N	Median Sentence in Months	Median Decrease in Months From Guideline Minimum	Median Percent Decrease From Guideline Minimum
TOTAL	6,401	13	8	40.0
Murder	0	--	--	--
Manslaughter	0	--	--	--
Kidnapping/Hostage Taking	0	--	--	--
Sexual Abuse	0	--	--	--
Assault	7	17	3	25.0
Robbery	0	--	--	--
Arson	0	--	--	--
Drugs - Trafficking	1,379	24	22	50.0
Drugs - Communication Facility	2	--	--	--
Drugs - Simple Possession	0	--	--	--
Firearms	15	27	10	33.2
Burglary/B&E	0	--	--	--
Auto Theft	0	--	--	--
Larceny	3	0	10	100.0
Fraud	4	17	18	46.0
Embezzlement	0	--	--	--
Forgery/Counterfeiting	0	--	--	--
Bribery	2	--	--	--
Tax	0	--	--	--
Money Laundering	4	27	19	41.7
Racketeering/Extortion	0	--	--	--
Gambling/Lottery	0	--	--	--
Civil Rights	0	--	--	--
Immigration	4,975	12	6	37.5
Child Pornography	1	--	--	--
Prison Offenses	0	--	--	--
Administration of Justice Offenses	4	19	6	23.6
Environmental/Wildlife	1	--	--	--
National Defense	1	--	--	--
Antitrust	0	--	--	--
Food & Drug	0	--	--	--
Other Miscellaneous Offenses	3	37	27	47.4

¹ Of the 75,836 cases, 6,944 received a §5K3.1 early disposition program departure. Of these, 6,402 cases had complete guideline application information. Of these cases, one was excluded due to missing sentence information. Note that the information presented in this table does include sentences of probation, but does not include any time of alternative confinement as described in USSG §5C1.1. Descriptions of variables used in this table are provided in Appendix A.

**OTHER GOVERNMENT SPONSORED BELOW RANGE CASES: DEGREE OF
DECREASE FOR OFFENDERS IN EACH PRIMARY OFFENSE CATEGORY¹
Fiscal Year 2014**

PRIMARY OFFENSE	N	Median Sentence in Months	Median Decrease in Months From Guideline Minimum	Median Percent Decrease From Guideline Minimum
TOTAL	5,808	39	21	36.8
Murder	7	180	60	19.0
Manslaughter	5	24	18	35.1
Kidnapping/Hostage Taking	3	168	120	35.9
Sexual Abuse	88	120	43	33.3
Assault	110	18	13	49.6
Robbery	69	60	29	27.2
Arson	8	16	22	45.6
Drugs - Trafficking	2,893	60	24	33.2
Drugs - Communication Facility	40	21	24	50.0
Drugs - Simple Possession	1	--	--	--
Firearms	638	60	18	29.2
Burglary/B&E	0	--	--	--
Auto Theft	3	72	4	5.1
Larceny	81	0	10	100.0
Fraud	514	12	15	56.4
Embezzlement	18	0	9	100.0
Forgery/Counterfeiting	27	12	6	36.4
Bribery	14	8	13	58.2
Tax	67	0	12	100.0
Money Laundering	122	18	22	60.6
Racketeering/Extortion	88	48	24	40.0
Gambling/Lottery	23	0	6	100.0
Civil Rights	7	0	12	100.0
Immigration	347	16	12	38.1
Child Pornography	350	72	55	41.3
Prison Offenses	22	8	6	50.0
Administration of Justice Offenses	110	1	14	88.8
Environmental/Wildlife	20	0	10	100.0
National Defense	12	16	26	59.6
Antitrust	0	--	--	--
Food & Drug	5	5	12	70.0
Other Miscellaneous Offenses	116	3	12	83.3

¹ Of the 75,836 cases, 6,068 received an other government sponsored downward departure. Of these, 5,845 cases had complete guideline application information. Due to an inability to calculate the extent of departure for cases with a guideline minimum of life, an additional 34 cases were also excluded from this table. Of the remaining 5,811 cases, three were excluded due to missing sentence information. Note that the information presented in this table does include sentences of probation, but does not include any time of alternative confinement as described in USSG §5C1.1. Descriptions of variables used in this table are provided in Appendix A.

**DOWNWARD DEPARTURES FROM GUIDELINE RANGE: DEGREE OF
DECREASE FOR OFFENDERS IN EACH PRIMARY OFFENSE CATEGORY¹
Fiscal Year 2014**

PRIMARY OFFENSE	N	Median Sentence in Months	Median Decrease in Months From Guideline Minimum	Median Percent Decrease From Guideline Minimum
TOTAL	1,694	24	13	35.1
Murder	0	--	--	--
Manslaughter	2	--	--	--
Kidnapping/Hostage Taking	0	--	--	--
Sexual Abuse	3	48	66	68.2
Assault	21	21	10	41.5
Robbery	16	32	13	21.8
Arson	0	--	--	--
Drugs - Trafficking	313	46	18	30.0
Drugs - Communication Facility	4	17	45	75.0
Drugs - Simple Possession	1	--	--	--
Firearms	147	38	12	22.1
Burglary/B&E	1	--	--	--
Auto Theft	0	--	--	--
Larceny	25	0	10	100.0
Fraud	143	12	12	53.7
Embezzlement	6	6	12	81.7
Forgery/Counterfeiting	8	17	8	33.3
Bribery	5	0	10	100.0
Tax	18	8	11	50.0
Money Laundering	24	17	11	36.7
Racketeering/Extortion	13	40	16	35.1
Gambling/Lottery	1	--	--	--
Civil Rights	1	--	--	--
Immigration	841	21	12	35.1
Child Pornography	48	72	42	39.9
Prison Offenses	7	12	5	33.3
Administration of Justice Offenses	18	12	6	42.2
Environmental/Wildlife	2	--	--	--
National Defense	1	--	--	--
Antitrust	0	--	--	--
Food & Drug	1	--	--	--
Other Miscellaneous Offenses	24	0	10	99.9

¹ Of the 75,836 cases, 1,757 received a downward departure from the guideline range. Of these, 1,706 cases had complete guideline application information. Due to an inability to calculate the extent of departure for cases with a guideline minimum of life, an additional ten cases were also excluded from this table. Of the remaining 1,696 cases, two were excluded due to missing sentence information. Note that the information presented in this table does include sentences of probation, but does not include any time of alternative confinement as described in USSG §5C1.1. Descriptions of variables used in this table are provided in Appendix A.

**DOWNWARD DEPARTURES WITH *BOOKER* /18 U.S.C. § 3553: DEGREE
OF DECREASE FOR OFFENDERS IN EACH PRIMARY OFFENSE CATEGORY¹
Fiscal Year 2014**

PRIMARY OFFENSE	N	Median Sentence in Months	Median Decrease in Months From Guideline Minimum	Median Percent Decrease From Guideline Minimum
TOTAL	767	30	21	42.9
Murder	1	--	--	--
Manslaughter	1	--	--	--
Kidnapping/Hostage Taking	0	--	--	--
Sexual Abuse	7	100	15	20.0
Assault	7	24	9	27.3
Robbery	12	40	29	36.4
Arson	0	--	--	--
Drugs - Trafficking	313	48	28	38.1
Drugs - Communication Facility	4	14	24	69.8
Drugs - Simple Possession	1	--	--	--
Firearms	79	38	18	34.8
Burglary/B&E	0	--	--	--
Auto Theft	0	--	--	--
Larceny	15	0	6	100.0
Fraud	112	14	15	49.9
Embezzlement	1	--	--	--
Forgery/Counterfeiting	11	9	10	70.0
Bribery	6	0	11	100.0
Tax	13	0	18	100.0
Money Laundering	8	14	31	74.9
Racketeering/Extortion	12	36	26	35.1
Gambling/Lottery	1	--	--	--
Civil Rights	3	0	16	100.0
Immigration	97	18	16	47.8
Child Pornography	40	71	55	45.1
Prison Offenses	2	--	--	--
Administration of Justice Offenses	8	12	12	41.5
Environmental/Wildlife	0	--	--	--
National Defense	1	--	--	--
Antitrust	1	--	--	--
Food & Drug	0	--	--	--
Other Miscellaneous Offenses	11	6	18	75.0

¹ Of the 75,836 cases, 807 received a downward departure from the guideline range with *Booker*/18 U.S.C § 3553. Of these, 770 cases had complete guideline application information. Due to an inability to calculate the extent of departure for cases with a guideline minimum of life, an additional three cases were also excluded from this table. Note that the information presented in this table does include sentences of probation, but does not include any time of alternative confinement as described in USSG §5C1.1. Descriptions of variables used in this table are provided in Appendix A.

**BELOW GUIDELINE RANGE WITH *BOOKER* /18 U.S.C. § 3553: DEGREE
OF DECREASE FOR OFFENDERS IN EACH PRIMARY OFFENSE CATEGORY¹
Fiscal Year 2014**

PRIMARY OFFENSE	N	Median Sentence in Months	Median Decrease in Months From Guideline Minimum	Median Percent Decrease From Guideline Minimum
TOTAL	12,495	27	15	35.7
Murder	7	84	24	25.0
Manslaughter	4	9	29	76.9
Kidnapping/Hostage Taking	3	72	39	40.5
Sexual Abuse	73	48	30	40.0
Assault	99	12	11	45.5
Robbery	138	48	14	21.3
Arson	9	30	9	22.0
Drugs - Trafficking	4,405	46	19	29.7
Drugs - Communication Facility	101	15	18	59.9
Drugs - Simple Possession	5	0	2	100.0
Firearms	1,470	40	13	24.3
Burglary/B&E	6	12	13	44.3
Auto Theft	10	27	20	52.5
Larceny	260	0	10	100.0
Fraud	1,732	12	12	51.4
Embezzlement	86	0	10	99.6
Forgery/Counterfeiting	133	5	10	71.4
Bribery	71	8	12	66.7
Tax	244	0	12	100.0
Money Laundering	221	12	18	60.0
Racketeering/Extortion	153	35	15	29.8
Gambling/Lottery	31	0	6	100.0
Civil Rights	10	14	15	60.5
Immigration	1,874	18	10	35.1
Child Pornography	740	75	51	40.0
Prison Offenses	59	7	6	41.7
Administration of Justice Offenses	249	8	10	55.4
Environmental/Wildlife	24	2	9	86.3
National Defense	19	35	16	33.3
Antitrust	2	--	--	--
Food & Drug	19	0	18	100.0
Other Miscellaneous Offenses	238	3	12	77.4

¹ Of the 75,836 cases, 12,894 were sentenced below the guideline range with *Booker*/18 U.S.C § 3553. Of these, 12,559 cases had complete guideline application information. Due to an inability to calculate the extent of departure for cases with a guideline minimum of life, an additional 51 cases were also excluded from this table. Furthermore, one case was excluded due to several logical criteria. Of the remaining 12,507 cases, 12 were excluded due to missing sentence information. Note that the information presented in this table does include sentences of probation, but does not include any time of alternative confinement as described in USSG §5C1.1. Descriptions of variables used in this table are provided in Appendix A.

**ALL REMAINING BELOW GUIDELINE RANGE CASES: DEGREE OF
DECREASE FOR OFFENDERS IN EACH PRIMARY OFFENSE CATEGORY¹
Fiscal Year 2014**

PRIMARY OFFENSE	N	Median Sentence in Months	Median Decrease in Months From Guideline Minimum	Median Percent Decrease From Guideline Minimum
TOTAL	352	0	6	100.0
Murder	0	--	--	--
Manslaughter	0	--	--	--
Kidnapping/Hostage Taking	0	--	--	--
Sexual Abuse	2	--	--	--
Assault	5	0	6	100.0
Robbery	7	48	10	14.3
Arson	0	--	--	--
Drugs - Trafficking	51	50	14	28.5
Drugs - Communication Facility	1	--	--	--
Drugs - Simple Possession	1	--	--	--
Firearms	29	24	8	25.9
Burglary/B&E	0	--	--	--
Auto Theft	0	--	--	--
Larceny	17	0	6	100.0
Fraud	50	2	8	77.0
Embezzlement	1	--	--	--
Forgery/Counterfeiting	9	3	6	50.0
Bribery	3	0	8	100.0
Tax	6	3	9	75.0
Money Laundering	4	2	4	69.0
Racketeering/Extortion	0	--	--	--
Gambling/Lottery	0	--	--	--
Civil Rights	0	--	--	--
Immigration	134	0	2	100.0
Child Pornography	9	96	76	50.0
Prison Offenses	3	0	12	100.0
Administration of Justice Offenses	4	6	9	66.6
Environmental/Wildlife	3	0	6	100.0
National Defense	1	--	--	--
Antitrust	0	--	--	--
Food & Drug	0	--	--	--
Other Miscellaneous Offenses	12	0	6	100.0

¹ Of the 75,836 cases, 412 were otherwise sentenced below the guideline range. Of these, 354 cases had complete guideline application information. Due to an inability to calculate the extent of departure for cases with a guideline minimum of life, an additional two cases were also excluded from this table. Note that the information presented in this table does include sentences of probation, but does not include any time of alternative confinement as described in USSG §5C1.1. Descriptions of variables used in this table are provided in Appendix A.

**UPWARD DEPARTURES FROM GUIDELINE RANGE: DEGREE OF
INCREASE FOR OFFENDERS IN EACH PRIMARY OFFENSE CATEGORY¹
Fiscal Year 2014**

PRIMARY OFFENSE	N	Median Sentence in Months	Median Increase in Months From Guideline Maximum	Median Percent Increase From Guideline Maximum
TOTAL	317	54	12	33.3
Murder	3	384	122	46.6
Manslaughter	6	84	38	82.4
Kidnapping/Hostage Taking	0	--	--	--
Sexual Abuse	10	126	22	31.5
Assault	10	82	23	50.1
Robbery	7	96	25	34.3
Arson	2	--	--	--
Drugs - Trafficking	52	48	13	24.1
Drugs - Communication Facility	0	--	--	--
Drugs - Simple Possession	4	42	36	400.0
Firearms	49	112	21	24.6
Burglary/B&E	1	--	--	--
Auto Theft	2	--	--	--
Larceny	4	27	11	90.7
Fraud	21	48	13	47.4
Embezzlement	0	--	--	--
Forgery/Counterfeiting	5	60	16	46.3
Bribery	0	--	--	--
Tax	0	--	--	--
Money Laundering	4	34	8	31.0
Racketeering/Extortion	6	128	20	12.2
Gambling/Lottery	0	--	--	--
Civil Rights	2	--	--	--
Immigration	93	27	6	31.3
Child Pornography	13	132	31	19.2
Prison Offenses	1	--	--	--
Administration of Justice Offenses	12	36	7	31.0
Environmental/Wildlife	0	--	--	--
National Defense	1	--	--	--
Antitrust	0	--	--	--
Food & Drug	0	--	--	--
Other Miscellaneous Offenses	9	60	6	33.3

¹ Of the 75,836 cases, 343 received an upward departure from the guideline range. Of these, 320 cases had complete guideline application information. Furthermore, three cases were excluded due to several logical criteria. Note that the information presented in this table does not include any time of alternative confinement as described in USSG §5C1.1. Descriptions of variables used in this table are provided in Appendix A.

**UPWARD DEPARTURES WITH *BOOKER*/18 U.S.C. § 3553: DEGREE OF
INCREASE FOR OFFENDERS IN EACH PRIMARY OFFENSE CATEGORY¹
Fiscal Year 2014**

PRIMARY OFFENSE	N	Median Sentence in Months	Median Increase in Months From Guideline Maximum	Median Percent Increase From Guideline Maximum
TOTAL	111	60	18	50.0
Murder	0	--	--	--
Manslaughter	1	--	--	--
Kidnapping/Hostage Taking	0	--	--	--
Sexual Abuse	2	--	--	--
Assault	3	36	14	30.4
Robbery	7	180	59	48.8
Arson	2	--	--	--
Drugs - Trafficking	17	72	9	50.0
Drugs - Communication Facility	0	--	--	--
Drugs - Simple Possession	1	--	--	--
Firearms	29	78	23	40.0
Burglary/B&E	0	--	--	--
Auto Theft	0	--	--	--
Larceny	2	--	--	--
Fraud	9	46	9	41.9
Embezzlement	0	--	--	--
Forgery/Counterfeiting	0	--	--	--
Bribery	0	--	--	--
Tax	0	--	--	--
Money Laundering	2	--	--	--
Racketeering/Extortion	1	--	--	--
Gambling/Lottery	0	--	--	--
Civil Rights	0	--	--	--
Immigration	20	27	10	73.9
Child Pornography	3	144	24	19.2
Prison Offenses	2	--	--	--
Administration of Justice Offenses	8	44	17	66.7
Environmental/Wildlife	0	--	--	--
National Defense	0	--	--	--
Antitrust	0	--	--	--
Food & Drug	0	--	--	--
Other Miscellaneous Offenses	2	--	--	--

¹ Of the 75,836 cases, 123 received an upward departure from the guideline range with *Booker*/18 U.S.C § 3553. Of these, 112 cases had complete guideline application information. Furthermore, one case was excluded due to several logical criteria. Note that the information presented in this table does not include any time of alternative confinement as described in USSG §5C1.1. Descriptions of variables used in this table are provided in Appendix A.

**ABOVE GUIDELINE RANGE WITH *BOOKER* /18 U.S.C. § 3553: DEGREE
OF INCREASE FOR OFFENDERS IN EACH PRIMARY OFFENSE CATEGORY¹
Fiscal Year 2014**

PRIMARY OFFENSE	N	Median Sentence in Months	Median Increase in Months From Guideline Maximum	Median Percent Increase From Guideline Maximum
TOTAL	838	60	14	42.9
Murder	2	--	--	--
Manslaughter	3	96	42	53.8
Kidnapping/Hostage Taking	0	--	--	--
Sexual Abuse	14	188	42	27.7
Assault	34	69	22	51.4
Robbery	21	115	19	19.8
Arson	2	--	--	--
Drugs - Trafficking	81	90	21	37.9
Drugs - Communication Facility	4	48	11	32.6
Drugs - Simple Possession	1	--	--	--
Firearms	197	87	19	30.4
Burglary/B&E	1	--	--	--
Auto Theft	3	108	30	59.6
Larceny	8	24	8	38.8
Fraud	86	60	14	46.3
Embezzlement	2	--	--	--
Forgery/Counterfeiting	19	36	12	50.4
Bribery	1	--	--	--
Tax	4	37	7	30.0
Money Laundering	6	53	15	50.0
Racketeering/Extortion	19	120	14	27.7
Gambling/Lottery	0	--	--	--
Civil Rights	1	--	--	--
Immigration	213	24	8	50.0
Child Pornography	32	180	44	28.1
Prison Offenses	12	42	15	55.4
Administration of Justice Offenses	26	36	15	50.0
Environmental/Wildlife	1	--	--	--
National Defense	1	--	--	--
Antitrust	2	--	--	--
Food & Drug	2	--	--	--
Other Miscellaneous Offenses	40	60	19	51.2

¹ Of the 75,836 cases, 1,104 were sentenced above the guideline range with *Booker*/18 U.S.C § 3553. Of these, 849 cases had complete guideline application information. Furthermore, 11 cases were excluded due to several logical criteria. Note that the information presented in this table does not include any time of alternative confinement as described in USSG §5C1.1. Descriptions of variables used in this table are provided in Appendix A.

**ALL REMAINING ABOVE GUIDELINE RANGE CASES: DEGREE OF
INCREASE FOR OFFENDERS IN EACH PRIMARY OFFENSE CATEGORY¹
Fiscal Year 2014**

PRIMARY OFFENSE	N	Median Sentence in Months	Median Increase in Months From Guideline Maximum	Median Percent Increase From Guideline Maximum
TOTAL	48	57	12	31.9
Murder	0	--	--	--
Manslaughter	0	--	--	--
Kidnapping/Hostage Taking	0	--	--	--
Sexual Abuse	1	--	--	--
Assault	0	--	--	--
Robbery	1	--	--	--
Arson	0	--	--	--
Drugs - Trafficking	14	60	13	36.9
Drugs - Communication Facility	0	--	--	--
Drugs - Simple Possession	0	--	--	--
Firearms	10	84	18	27.3
Burglary/B&E	0	--	--	--
Auto Theft	1	--	--	--
Larceny	0	--	--	--
Fraud	4	83	25	51.9
Embezzlement	0	--	--	--
Forgery/Counterfeiting	1	--	--	--
Bribery	0	--	--	--
Tax	1	--	--	--
Money Laundering	2	--	--	--
Racketeering/Extortion	0	--	--	--
Gambling/Lottery	0	--	--	--
Civil Rights	0	--	--	--
Immigration	11	24	4	25.0
Child Pornography	0	--	--	--
Prison Offenses	0	--	--	--
Administration of Justice Offenses	1	--	--	--
Environmental/Wildlife	0	--	--	--
National Defense	0	--	--	--
Antitrust	0	--	--	--
Food & Drug	0	--	--	--
Other Miscellaneous Offenses	1	--	--	--

¹ Of the 75,836 cases, 75 were otherwise sentenced above the guideline range. Of these, 61 cases had complete guideline application information. Furthermore, 13 cases were excluded due to several logical criteria. Note that the information presented in this table does not include any time of alternative confinement as described in USSG §5C1.1. Descriptions of variables used in this table are provided in Appendix A.

OFFENDERS RECEIVING SENTENCING OPTIONS IN EACH PRIMARY OFFENSE CATEGORY¹
Fiscal Year 2014

PRIMARY OFFENSE	TOTAL	TOTAL RECEIVING IMPRISONMENT		Prison Only		Prison/Community Split Sentence ²		TOTAL RECEIVING PROBATION		Probation and Confinement		Probation Only	
		N	%	N	%	N	%	N	%	N	%	N	%
TOTAL	75,175	67,630	90.0	65,407	87.0	2,223	3.0	7,545	10.0	2,104	2.8	5,441	7.2
Murder	75	75	100.0	74	98.7	1	1.3	0	0.0	0	0.0	0	0.0
Manslaughter	49	48	98.0	44	89.8	4	8.2	1	2.0	0	0.0	1	2.0
Kidnapping/Hostage Taking	49	49	100.0	46	93.9	3	6.1	0	0.0	0	0.0	0	0.0
Sexual Abuse	545	539	98.9	516	94.7	23	4.2	6	1.1	3	0.6	3	0.6
Assault	769	661	86.0	617	80.2	44	5.7	108	14.0	27	3.5	81	10.5
Robbery	782	766	98.0	745	95.3	21	2.7	16	2.0	8	1.0	8	1.0
Arson	54	51	94.4	50	92.6	1	1.9	3	5.6	1	1.9	2	3.7
Drugs - Trafficking	21,318	20,402	95.7	19,728	92.5	674	3.2	916	4.3	323	1.5	593	2.8
Drugs - Communication Facility	344	284	82.6	275	79.9	9	2.6	60	17.4	22	6.4	38	11.0
Drugs - Simple Possession	2,324	2,105	90.6	2,098	90.3	7	0.3	219	9.4	9	0.4	210	9.0
Firearms	7,918	7,517	94.9	7,314	92.4	203	2.6	401	5.1	153	1.9	248	3.1
Burglary/B&E	37	37	100.0	35	94.6	2	5.4	0	0.0	0	0.0	0	0.0
Auto Theft	86	81	94.2	80	93.0	1	1.2	5	5.8	4	4.7	1	1.2
Larceny	1,331	607	45.6	512	38.5	95	7.1	724	54.4	172	12.9	552	41.5
Fraud	7,588	5,887	77.6	5,430	71.6	457	6.0	1,701	22.4	628	8.3	1,073	14.1
Embezzlement	329	172	52.3	138	41.9	34	10.3	157	47.7	39	11.9	118	35.9
Forgery/Counterfeiting	710	564	79.4	505	71.1	59	8.3	146	20.6	56	7.9	90	12.7
Bribery	240	171	71.3	152	63.3	19	7.9	69	28.8	32	13.3	37	15.4
Tax	639	367	57.4	316	49.5	51	8.0	272	42.6	111	17.4	161	25.2
Money Laundering	886	672	75.8	616	69.5	56	6.3	214	24.2	61	6.9	153	17.3
Racketeering/Extortion	863	820	95.0	796	92.2	24	2.8	43	5.0	13	1.5	30	3.5
Gambling/Lottery	116	38	32.8	27	23.3	11	9.5	78	67.2	29	25.0	49	42.2
Civil Rights	58	42	72.4	41	70.7	1	1.7	16	27.6	8	13.8	8	13.8
Immigration	22,226	21,290	95.8	21,103	94.9	187	0.8	936	4.2	146	0.7	790	3.6
Child Pornography	1,925	1,914	99.4	1,871	97.2	43	2.2	11	0.6	4	0.2	7	0.4
Prison Offenses	447	424	94.9	399	89.3	25	5.6	23	5.1	2	0.4	21	4.7
Administration of Justice Offenses	1,235	939	76.0	868	70.3	71	5.7	296	24.0	77	6.2	219	17.7
Environmental/Wildlife	188	52	27.7	38	20.2	14	7.4	136	72.3	10	5.3	126	67.0
National Defense	108	97	89.8	97	89.8	0	0.0	11	10.2	2	1.9	9	8.3
Antitrust	19	17	89.5	17	89.5	0	0.0	2	10.5	2	10.5	0	0.0
Food & Drug	109	26	23.9	21	19.3	5	4.6	83	76.1	17	15.6	66	60.6
Other Miscellaneous Offenses	1,808	916	50.7	838	46.3	78	4.3	892	49.3	145	8.0	747	41.3

¹ Of the 75,836 cases, 661 were excluded due to one or both of the following reasons: the offender received neither imprisonment nor probation (660), or missing sentencing information (1). Descriptions of variables used in this table are provided in Appendix A.

² Prison/Community Split Sentence includes all cases in which offenders received prison and conditions of confinement as described in USSG §5C1.1.

Table 19

SENTENCE LENGTH IN EACH PRIMARY OFFENSE CATEGORY¹
Fiscal Year 2014

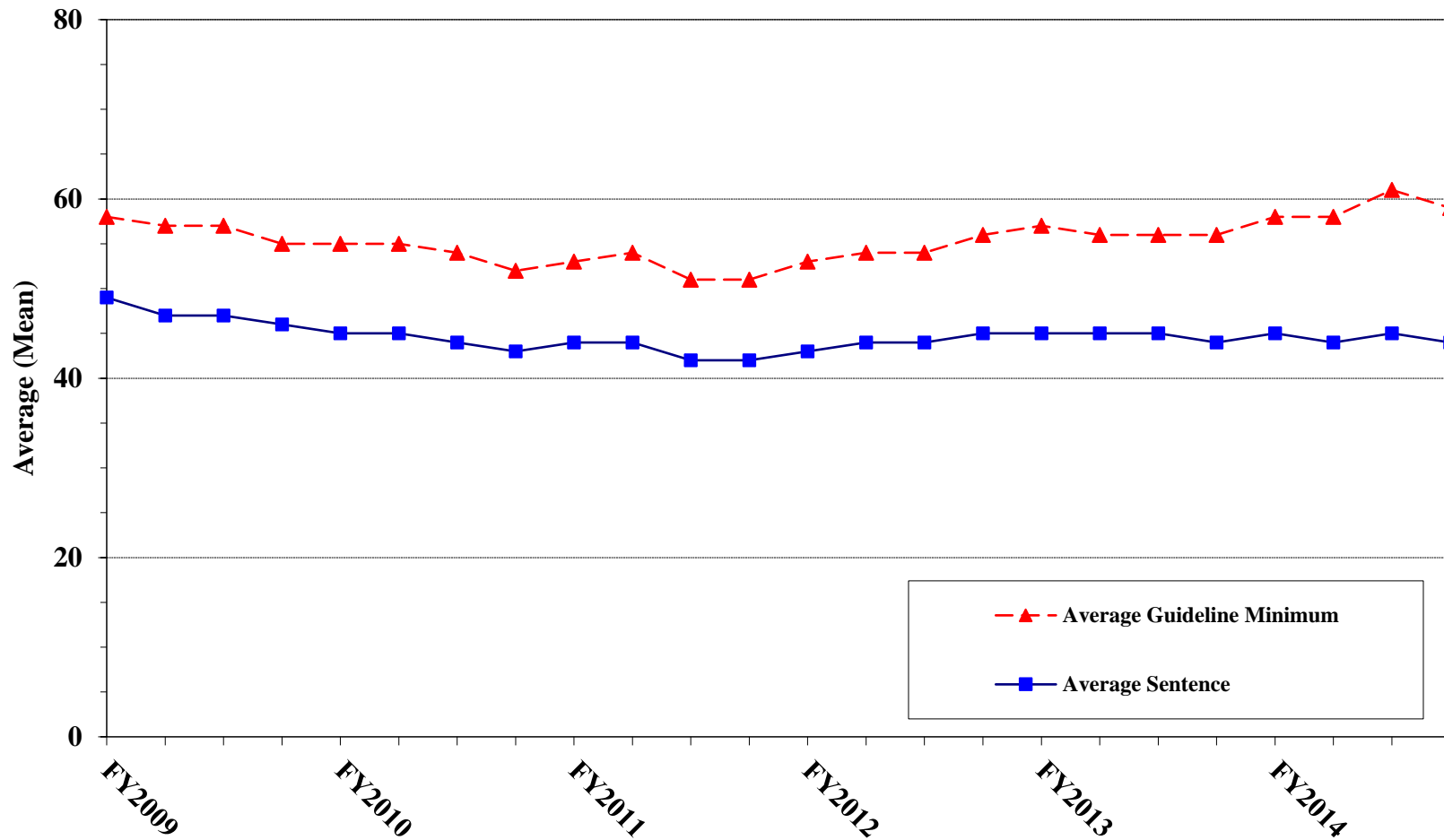
PRIMARY OFFENSE	Mean Months	Median Months	N
TOTAL	44	24	75,836
Murder	273	240	75
Manslaughter	54	37	49
Kidnapping/Hostage Taking	201	168	50
Sexual Abuse	134	120	545
Assault	31	18	775
Robbery	78	60	782
Arson	62	49	54
Drugs - Trafficking	68	51	21,323
Drugs - Communication Facility	31	24	344
Drugs - Simple Possession	5	6	2,344
Firearms	82	57	7,925
Burglary/B&E	30	21	37
Auto Theft	61	42	86
Larceny	10	2	1,408
Fraud	27	14	7,614
Embezzlement	10	6	334
Forgery/Counterfeiting	18	12	713
Bribery	21	12	241
Tax	13	9	649
Money Laundering	32	18	886
Racketeering/Extortion	88	58	864
Gambling/Lottery	5	3	117
Civil Rights	36	18	58
Immigration	15	10	22,238
Child Pornography	137	97	1,925
Prison Offenses	15	12	448
Administration of Justice Offenses	18	12	1,242
Environmental/Wildlife	4	0	202
National Defense	45	35	108
Antitrust	22	16	19
Food & Drug	8	0	114
Other Miscellaneous Offenses	18	0	2,267

¹ Sentences of probation only are included in this table as zero months of imprisonment. In addition, the information presented in this table includes time of confinement as described in USSG §5C1.1. Descriptions of variables used in this table are provided in Appendix A.

Figure C

**AVERAGE SENTENCE LENGTH AND AVERAGE GUIDELINE MINIMUM
QUARTERLY DATA FOR ALL CASES¹**

Fiscal Years 2009 - 2014

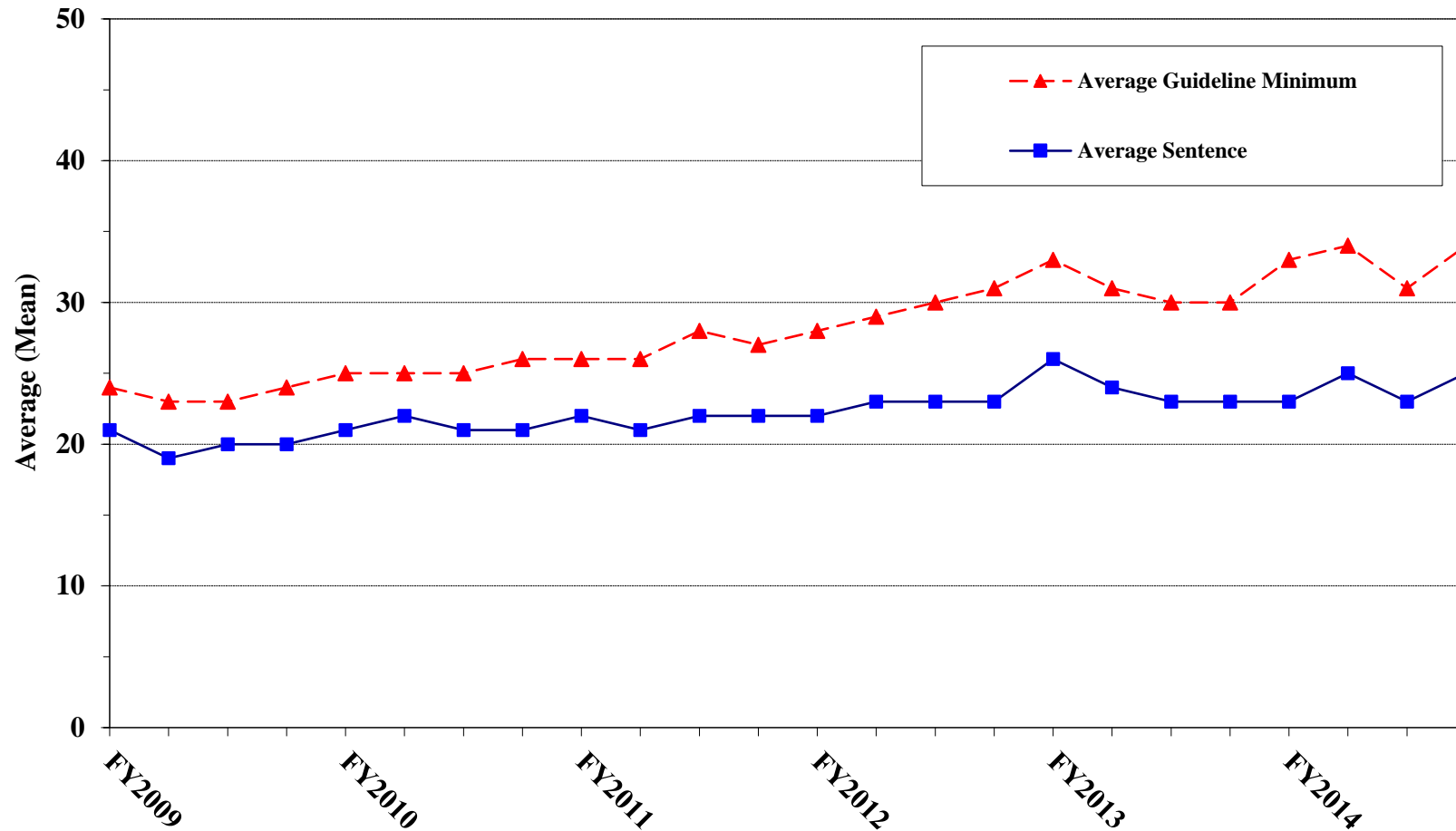


¹ Cases with guideline minimums of life or probation were included in the guideline minimum average computations as 470 months and zero months, respectively. In turn, cases with sentences of 470 months or greater (including life) or probation were included in the sentence average computations as 470 months and zero months, respectively. In addition, the information presented in this table includes time of confinement as described in USSG §5C1.1. Guideline minimums account for applicable statutory mandatory penalties. Descriptions of variables used in this figure are provided in Appendix A.

Figure D

**AVERAGE SENTENCE LENGTH AND AVERAGE GUIDELINE MINIMUM QUARTERLY
DATA FOR §2B1.1 OFFENDERS (THEFT, PROPERTY DESTRUCTION, AND FRAUD)¹**

Fiscal Years 2009 - 2014

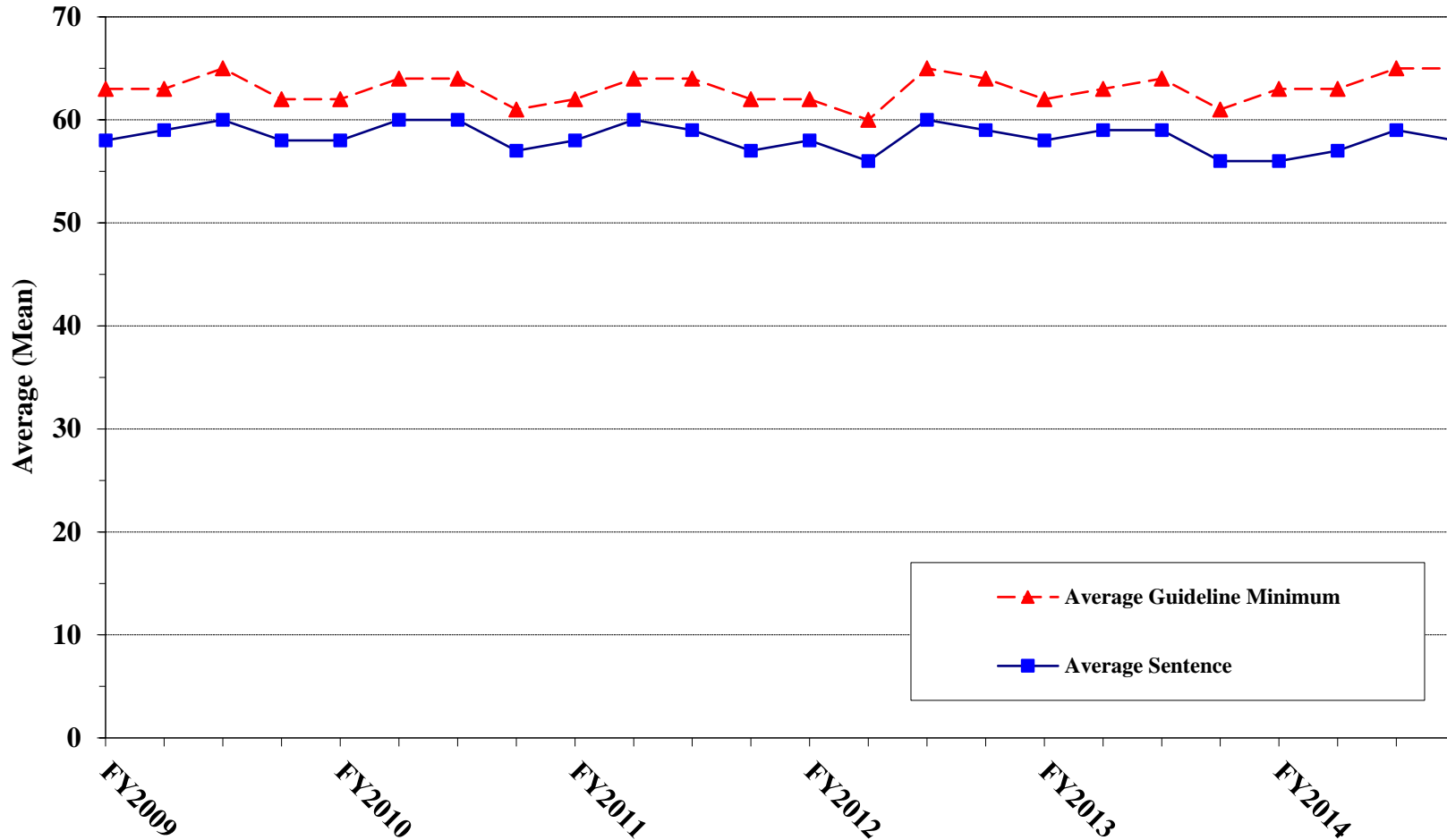


¹ Figure includes only cases with a primary sentencing guideline of USSG §2B1.1 (Larceny, Embezzlement, and Other Forms of Theft; Offenses Involving Stolen Property; Property Damage or Destruction; Fraud and Deceit; Forgery; Offenses Involving Altered or Counterfeit Instruments Other than Counterfeit Bearer Obligation of the United States). Additionally, cases with an amendment year prior to 2001 were excluded from this figure because prior to this time fraud cases were reported separately as USSG §2F1.1. Cases with guideline minimums of life or probation were included in the guideline minimum average computations as 470 months and zero months, respectively. In turn, cases with sentences of 470 months or greater (including life) or probation were included in the sentence average computations as 470 months and zero months, respectively. In addition, the information presented in this table includes time of confinement as described in USSG §5C1.1. Guideline minimums account for applicable statutory mandatory penalties. Descriptions of variables used in this figure are provided in Appendix A.

Figure E

AVERAGE SENTENCE LENGTH AND AVERAGE GUIDELINE MINIMUM QUARTERLY DATA FOR §2K2.1 OFFENDERS (UNLAWFUL POSSESSION OF OR TRANSACTION IN FIREARMS)¹

Fiscal Years 2009 - 2014

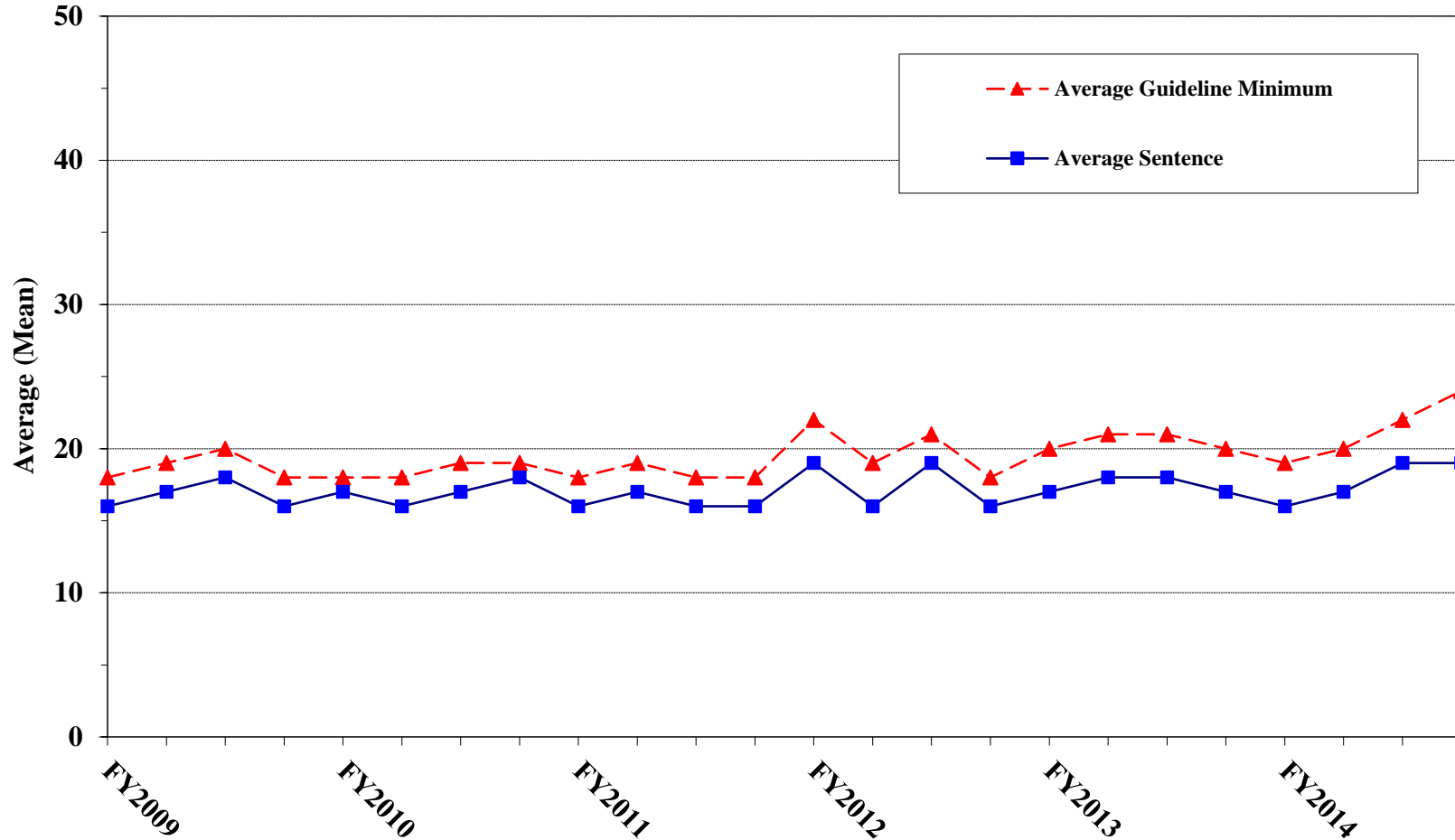


¹ Figure includes only cases with a primary sentencing guideline of USSG §2K2.1 (Unlawful Receipt, Possession, or Transportation of Firearms or Ammunition; Prohibited Transactions Involving Firearms or Ammunition). Cases with guideline minimums of life or probation were included in the guideline minimum average computations as 470 months and zero months, respectively. In turn, cases with sentences of 470 months or greater (including life) or probation were included in the sentence average computations as 470 months and zero months, respectively. In addition, the information presented in this table includes time of confinement as described in USSG §5C1.1. Guideline minimums account for applicable statutory mandatory penalties. Descriptions of variables used in this figure are provided in Appendix A.

Figure F

**AVERAGE SENTENCE LENGTH AND AVERAGE GUIDELINE MINIMUM
QUARTERLY DATA FOR §2L1.1 OFFENDERS (ALIEN SMUGGLING)¹**

Fiscal Years 2009 - 2014

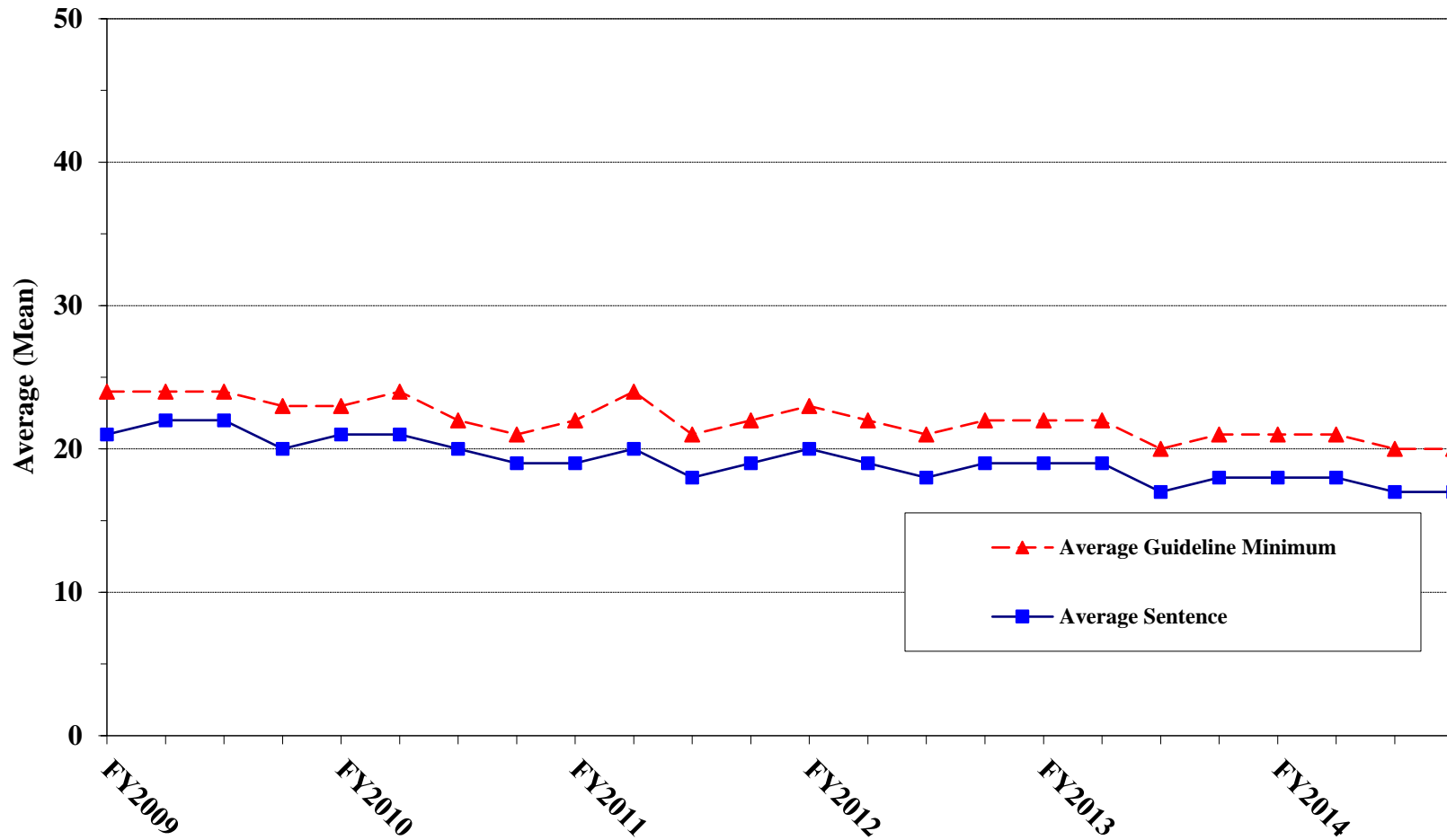


¹ Figure includes only cases with a primary sentencing guideline of USSG §2L1.1 (Smuggling, Transporting, or Harboring an Unlawful Alien). Cases with guideline minimums of life or probation were included in the guideline minimum average computations as 470 months and zero months, respectively. In turn, cases with sentences of 470 months or greater (including life) or probation were included in the sentence average computations as 470 months and zero months, respectively. In addition, the information presented in this table includes time of confinement as described in USSG §5C1.1. Guideline minimums account for applicable statutory mandatory penalties. Descriptions of variables used in this figure are provided in Appendix A.

Figure G

AVERAGE SENTENCE LENGTH AND AVERAGE GUIDELINE MINIMUM QUARTERLY DATA FOR §2L1.2 OFFENDERS (UNLAWFUL ENTERING OR REMAINING IN THE UNITED STATES)¹

Fiscal Years 2009 - 2014

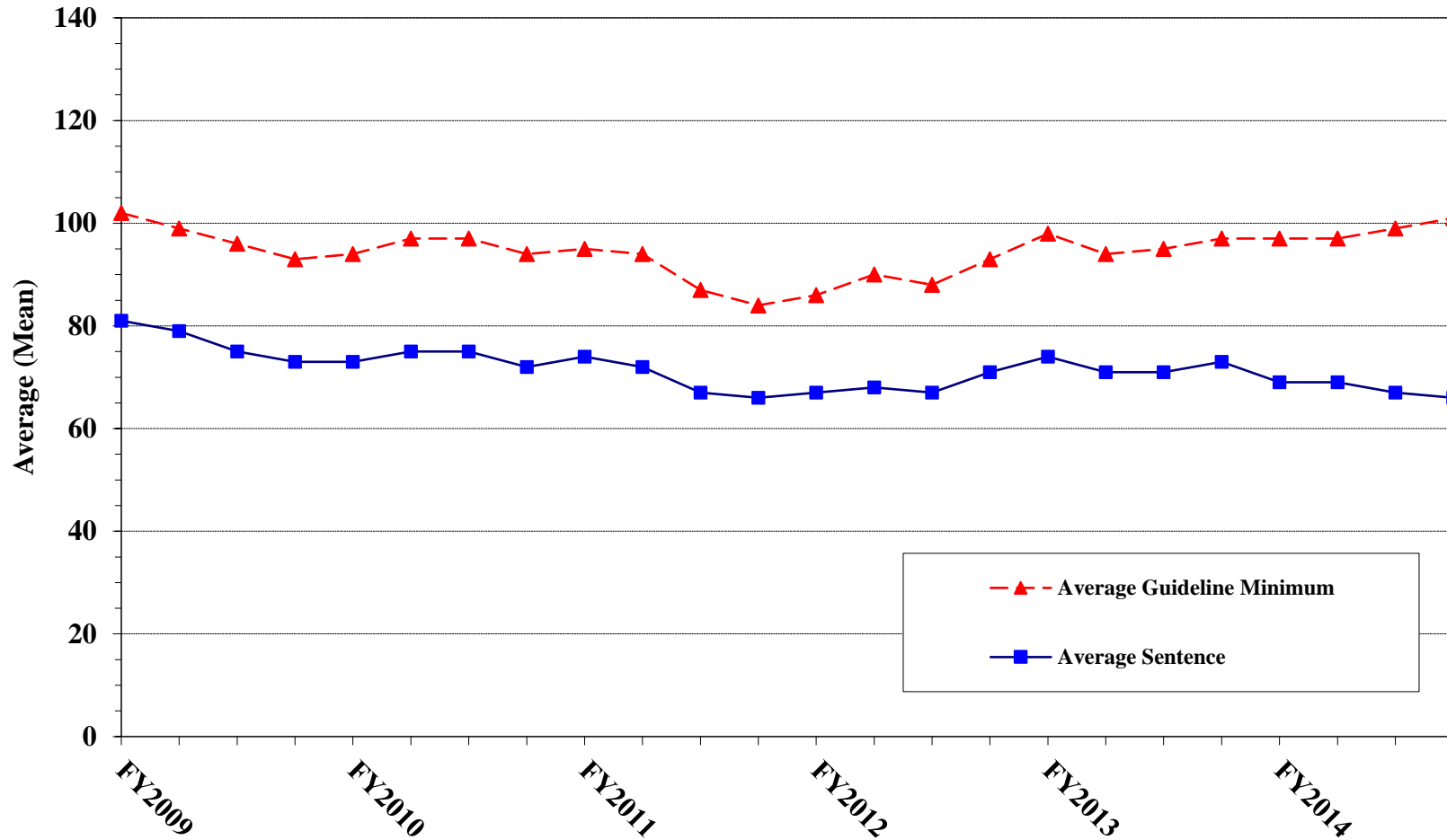


¹ Figure includes only cases with a primary sentencing guideline of USSG §2L1.2. Cases with guideline minimums of life or probation were included in the guideline minimum average computations as 470 months and zero months, respectively. In turn, cases with sentences of 470 months or greater (including life) or probation were included in the sentence average computations as 470 months and zero months, respectively. In addition, the information presented in this table includes time of confinement as described in USSG §5C1.1. Guideline minimums account for applicable statutory mandatory penalties. Descriptions of variables used in this figure are provided in Appendix A.

Figure H

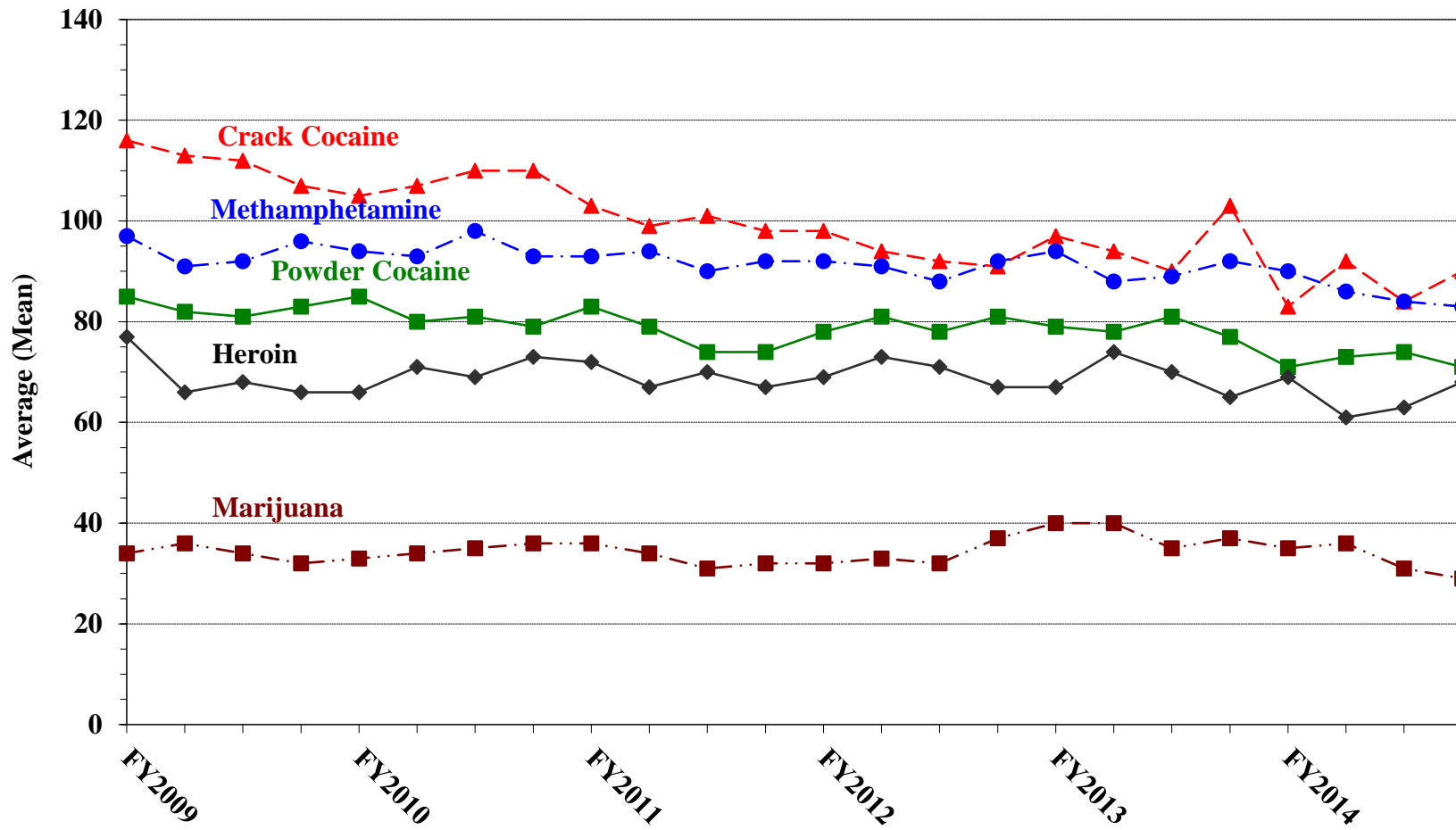
AVERAGE SENTENCE LENGTH AND AVERAGE GUIDELINE MINIMUM QUARTERLY DATA FOR §2D1.1 OFFENDERS (UNLAWFUL DRUG TRAFFICKING OR MANUFACTURING)¹

Fiscal Years 2009 - 2014



¹ Figure includes only cases with a primary sentencing guideline of USSG §2D1.1 (Unlawful Manufacturing, Importing, Exporting, or Trafficking (Including Possession with Intent to Commit These Offenses); Attempt or Conspiracy). Cases with guideline minimums of life or probation were included in the guideline minimum average computations as 470 months and zero months, respectively. In turn, cases with sentences of 470 months or greater (including life) or probation were included in the sentence average computations as 470 months and zero months, respectively. In addition, the information presented in this table includes time of confinement as described in USSG §5C1.1. Guideline minimums account for applicable statutory mandatory penalties. Descriptions of variables used in this figure are provided in Appendix A.

Figure I
AVERAGE SENTENCE LENGTH FOR EACH DRUG TYPE¹
Fiscal Years 2009 - 2014



¹ Only cases sentenced under USSG §§2D1.1 (Drug Trafficking), 2D1.2 (Protected Locations), 2D1.5 (Continuing Criminal Enterprise), 2D1.6 (Use of Communication Facility), 2D1.8 (Rent/Manage Drug Establishment), or 2D2.1 (Simple Possession) are depicted in this figure. Cases with guideline minimums of life or probation were included in the guideline minimum average computations as 470 months and zero months, respectively. In turn, cases with sentences of 470 months or greater (including life) or probation were included in the sentence average computations as 470 months and zero months, respectively. In addition, the information presented in this table includes time of confinement as described in USSG §5C1.1. Guideline minimums account for applicable statutory mandatory penalties. Descriptions of variables used in this figure are provided in Appendix A.

Table 20

**WITHIN RANGE CASES: POSITION OF SENTENCE FOR OFFENDERS
IN EACH PRIMARY OFFENSE CATEGORY¹
Fiscal Year 2014**

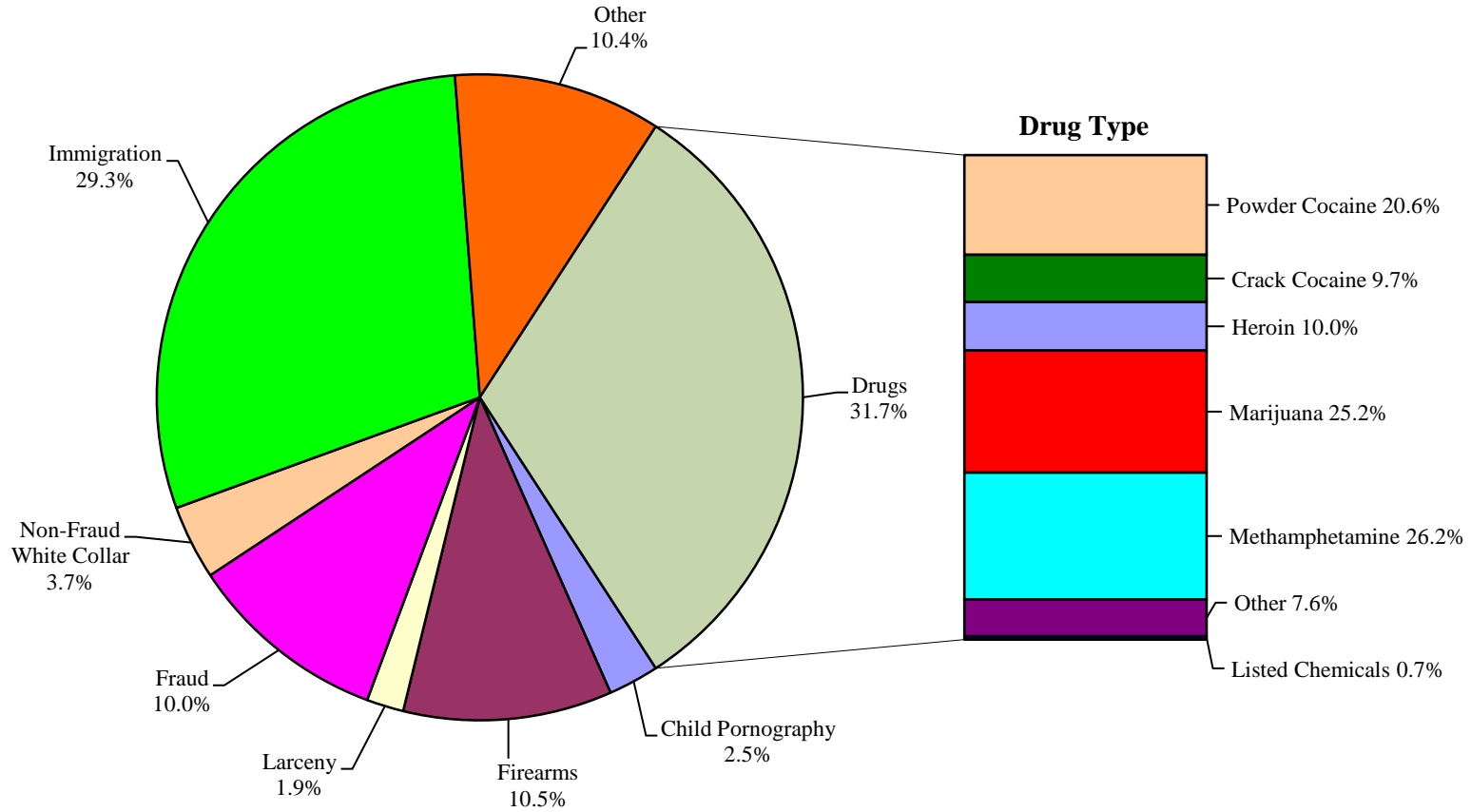
PRIMARY OFFENSE	TOTAL	Guideline Minimum		Lower Half of Range		Midpoint of Range		Upper Half of Range		Guideline Maximum	
		N	%	N	%	N	%	N	%	N	%
TOTAL	27,842	13,877	49.8	6,181	22.2	2,417	8.7	2,201	7.9	3,166	11.4
Murder	23	5	21.7	7	30.4	1	4.3	2	8.7	8	34.8
Manslaughter	27	12	44.4	2	7.4	6	22.2	2	7.4	5	18.5
Kidnapping/Hostage Taking	11	7	63.6	3	27.3	0	0.0	1	9.1	0	0.0
Sexual Abuse	209	91	43.5	40	19.1	26	12.4	17	8.1	35	16.7
Assault	324	144	44.4	50	15.4	30	9.3	36	11.1	64	19.8
Robbery	377	178	47.2	60	15.9	27	7.2	47	12.5	65	17.2
Arson	14	9	64.3	2	14.3	1	7.1	0	0.0	2	14.3
Drugs - Trafficking	5,224	3,600	68.9	712	13.6	295	5.6	261	5.0	356	6.8
Drugs - Communication Facility	54	29	53.7	4	7.4	3	5.6	6	11.1	12	22.2
Drugs - Simple Possession	133	89	66.9	15	11.3	10	7.5	7	5.3	12	9.0
Firearms	3,696	1,973	53.4	526	14.2	377	10.2	259	7.0	561	15.2
Burglary/B&E	23	9	39.1	3	13.0	3	13.0	2	8.7	6	26.1
Auto Theft	46	14	30.4	10	21.7	4	8.7	5	10.9	13	28.3
Larceny	662	451	68.1	74	11.2	33	5.0	33	5.0	71	10.7
Fraud	2,779	1,565	56.3	420	15.1	219	7.9	226	8.1	349	12.6
Embezzlement	176	134	76.1	20	11.4	7	4.0	7	4.0	8	4.5
Forgery/Counterfeiting	401	200	49.9	56	14.0	41	10.2	33	8.2	71	17.7
Bribery	71	45	63.4	13	18.3	2	2.8	2	2.8	9	12.7
Tax	181	129	71.3	19	10.5	14	7.7	3	1.7	16	8.8
Money Laundering	225	151	67.1	31	13.8	15	6.7	12	5.3	16	7.1
Racketeering/Extortion	269	124	46.1	47	17.5	26	9.7	34	12.6	38	14.1
Gambling/Lottery	50	35	70.0	2	4.0	5	10.0	2	4.0	6	12.0
Civil Rights	15	7	46.7	4	26.7	0	0.0	2	13.3	2	13.3
Immigration	10,688	3,581	33.5	3,739	35.0	1,130	10.6	1,063	9.9	1,175	11.0
Child Pornography	450	269	59.8	77	17.1	20	4.4	34	7.6	50	11.1
Prison Offenses	257	117	45.5	54	21.0	23	8.9	23	8.9	40	15.6
Administration of Justice Offenses	620	344	55.5	75	12.1	58	9.4	36	5.8	107	17.3
Environmental/Wildlife	81	73	90.1	5	6.2	2	2.5	0	0.0	1	1.2
National Defense	35	21	60.0	5	14.3	0	0.0	4	11.4	5	14.3
Antitrust	2	1	50.0	0	0.0	0	0.0	0	0.0	1	50.0
Food & Drug	59	50	84.7	5	8.5	2	3.4	0	0.0	2	3.4
Other Miscellaneous Offenses	660	420	63.6	101	15.3	37	5.6	42	6.4	60	9.1

¹ Of the 75,836 cases, 34,117 were sentenced within the applicable guideline range. Of those, 29,516 cases had complete guideline application information. An additional 1,674 cases were excluded due to several logical criteria. Descriptions of variables used in this table are provided in Appendix A.

Figure J

OFFENDERS IN EACH PRIMARY OFFENSE CATEGORY¹

Fiscal Year 2014



¹ The Drug category includes the following offense types: trafficking, use of a communication facility, and simple possession. The Non-Fraud White Collar category includes the following offense types: embezzlement, forgery/counterfeiting, bribery, money laundering, and tax. Descriptions of variables used in this figure are provided in Appendix A.

SOURCE: U.S. Sentencing Commission, 2014 Datafile, USSCFY14.

Table 21

GUIDELINE OFFENDERS IN EACH PRIMARY OFFENSE CATEGORY¹
Fiscal Year 2014

PRIMARY OFFENSE	N	%
TOTAL	75,836	100.0
Murder	75	0.1
Manslaughter	49	0.1
Kidnapping/Hostage Taking	50	0.1
Sexual Abuse	545	0.7
Assault	775	1.0
Robbery	782	1.0
Arson	54	0.1
Drugs - Trafficking	21,323	28.1
Drugs - Communication Facility	344	0.5
Drugs - Simple Possession	2,344	3.1
Firearms	7,925	10.5
Burglary/B&E	37	0.0
Auto Theft	86	0.1
Larceny	1,408	1.9
Fraud	7,614	10.0
Embezzlement	334	0.4
Forgery/Counterfeiting	713	0.9
Bribery	241	0.3
Tax	649	0.9
Money Laundering	886	1.2
Racketeering/Extortion	864	1.1
Gambling/Lottery	117	0.2
Civil Rights	58	0.1
Immigration	22,238	29.3
Child Pornography	1,925	2.5
Prison Offenses	448	0.6
Administration of Justice Offenses	1,242	1.6
Environmental/Wildlife	202	0.3
National Defense	108	0.1
Antitrust	19	0.0
Food & Drug	114	0.2
Other Miscellaneous Offenses	2,267	3.0

¹ Descriptions of variables used in this table are provided in Appendix A.

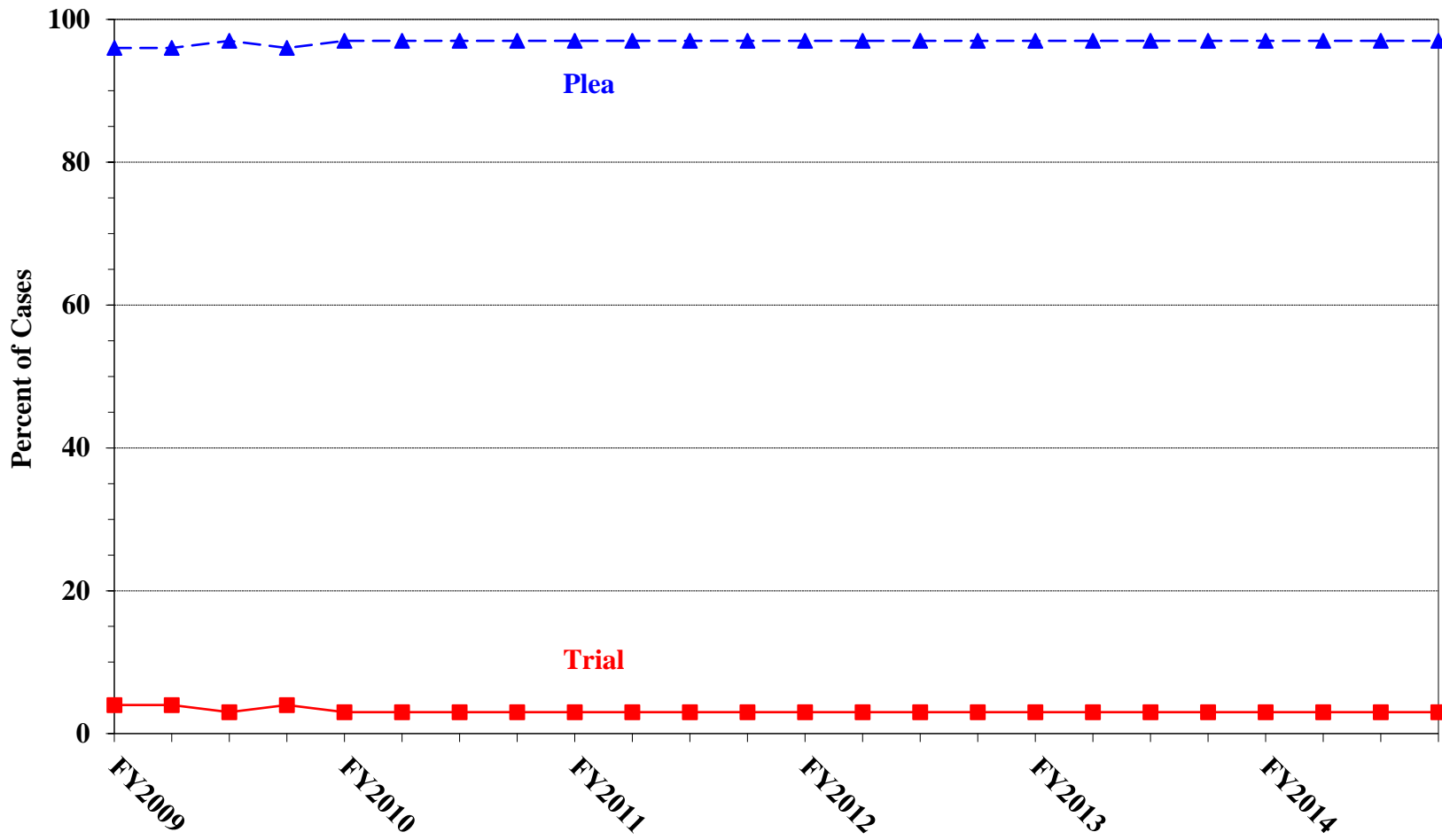
Table 22

GUILTY PLEAS AND TRIALS IN EACH PRIMARY OFFENSE CATEGORY¹
Fiscal Year 2014

PRIMARY OFFENSE	TOTAL	PLEA		TRIAL	
		N	%	N	%
TOTAL	75,836	73,612	97.1	2,224	2.9
Murder	75	62	82.7	13	17.3
Manslaughter	49	47	95.9	2	4.1
Kidnapping/Hostage Taking	50	43	86.0	7	14.0
Sexual Abuse	545	475	87.2	70	12.8
Assault	775	723	93.3	52	6.7
Robbery	782	752	96.2	30	3.8
Arson	54	46	85.2	8	14.8
Drugs - Trafficking	21,323	20,763	97.4	560	2.6
Drugs - Communication Facility	344	343	99.7	1	0.3
Drugs - Simple Possession	2,344	2,342	99.9	2	0.1
Firearms	7,925	7,466	94.2	459	5.8
Burglary/B&E	37	36	97.3	1	2.7
Auto Theft	86	81	94.2	5	5.8
Larceny	1,408	1,389	98.7	19	1.3
Fraud	7,614	7,164	94.1	450	5.9
Embezzlement	334	328	98.2	6	1.8
Forgery/Counterfeiting	713	704	98.7	9	1.3
Bribery	241	234	97.1	7	2.9
Tax	649	606	93.4	43	6.6
Money Laundering	886	846	95.5	40	4.5
Racketeering/Extortion	864	800	92.6	64	7.4
Gambling/Lottery	117	112	95.7	5	4.3
Civil Rights	58	50	86.2	8	13.8
Immigration	22,238	22,077	99.3	161	0.7
Child Pornography	1,925	1,855	96.4	70	3.6
Prison Offenses	448	441	98.4	7	1.6
Administration of Justice Offenses	1,242	1,199	96.5	43	3.5
Environmental/Wildlife	202	199	98.5	3	1.5
National Defense	108	96	88.9	12	11.1
Antitrust	19	17	89.5	2	10.5
Food & Drug	114	109	95.6	5	4.4
Other Miscellaneous Offenses	2,267	2,207	97.4	60	2.6

¹ Descriptions of variables used in this table are provided in Appendix A.

Figure K
QUARTERLY DATA FOR GUILTY PLEAS AND TRIALS¹
Fiscal Years 2009 - 2014



¹ Descriptions of variables used in this figure are provided in Appendix A.

Table 23

RACE OF OFFENDERS IN EACH PRIMARY OFFENSE CATEGORY¹
Fiscal Year 2014

PRIMARY OFFENSE	TOTAL	WHITE		BLACK		HISPANIC		OTHER	
		N	%	N	%	N	%	N	%
TOTAL	73,381	17,301	23.6	14,878	20.3	38,142	52.0	3,060	4.2
Murder	75	24	32.0	4	5.3	18	24.0	29	38.7
Manslaughter	49	0	0.0	1	2.0	3	6.1	45	91.8
Kidnapping/Hostage Taking	49	11	22.4	20	40.8	14	28.6	4	8.2
Sexual Abuse	545	191	35.0	117	21.5	64	11.7	173	31.7
Assault	748	186	24.9	98	13.1	121	16.2	343	45.9
Robbery	781	324	41.5	350	44.8	81	10.4	26	3.3
Arson	54	25	46.3	13	24.1	5	9.3	11	20.4
Drugs - Trafficking	21,287	5,224	24.5	5,271	24.8	10,124	47.6	668	3.1
Drugs - Communication Facility	340	100	29.4	98	28.8	127	37.4	15	4.4
Drugs - Simple Possession	1,915	169	8.8	81	4.2	1,623	84.8	42	2.2
Firearms	7,900	2,124	26.9	3,843	48.6	1,710	21.6	223	2.8
Burglary/B&E	37	6	16.2	4	10.8	6	16.2	21	56.8
Auto Theft	86	28	32.6	24	27.9	33	38.4	1	1.2
Larceny	1,288	578	44.9	393	30.5	204	15.8	113	8.8
Fraud	7,483	3,109	41.5	2,289	30.6	1,577	21.1	508	6.8
Embezzlement	327	199	60.9	57	17.4	36	11.0	35	10.7
Forgery/Counterfeiting	708	289	40.8	283	40.0	110	15.5	26	3.7
Bribery	241	92	38.2	54	22.4	73	30.3	22	9.1
Tax	645	400	62.0	123	19.1	64	9.9	58	9.0
Money Laundering	879	286	32.5	135	15.4	367	41.8	91	10.4
Racketeering/Extortion	862	233	27.0	311	36.1	289	33.5	29	3.4
Gambling/Lottery	116	82	70.7	2	1.7	11	9.5	21	18.1
Civil Rights	56	38	67.9	14	25.0	3	5.4	1	1.8
Immigration	21,357	421	2.0	369	1.7	20,449	95.7	118	0.6
Child Pornography	1,923	1,558	81.0	82	4.3	231	12.0	52	2.7
Prison Offenses	432	87	20.1	186	43.1	128	29.6	31	7.2
Administration of Justice Offenses	1,226	524	42.7	268	21.9	315	25.7	119	9.7
Environmental/Wildlife	180	121	67.2	9	5.0	19	10.6	31	17.2
National Defense	105	33	31.4	2	1.9	43	41.0	27	25.7
Antitrust	16	11	68.8	0	0.0	0	0.0	5	31.3
Food & Drug	104	61	58.7	3	2.9	21	20.2	19	18.3
Other Miscellaneous Offenses	1,567	767	48.9	374	23.9	273	17.4	153	9.8

¹ Of the 75,836 cases, 2,455 were excluded due to missing information on offender's race. Descriptions of variables used in this table are provided in Appendix A.

Table 24

GENDER OF OFFENDERS IN EACH PRIMARY OFFENSE CATEGORY¹
Fiscal Year 2014

PRIMARY OFFENSE	TOTAL	MALE		FEMALE	
		N	%	N	%
TOTAL	75,242	64,711	86.0	10,531	14.0
Murder	75	65	86.7	10	13.3
Manslaughter	49	37	75.5	12	24.5
Kidnapping/Hostage Taking	50	39	78.0	11	22.0
Sexual Abuse	545	508	93.2	37	6.8
Assault	771	667	86.5	104	13.5
Robbery	782	699	89.4	83	10.6
Arson	54	48	88.9	6	11.1
Drugs - Trafficking	21,322	17,989	84.4	3,333	15.6
Drugs - Communication Facility	344	269	78.2	75	21.8
Drugs - Simple Possession	2,193	2,005	91.4	188	8.6
Firearms	7,919	7,604	96.0	315	4.0
Burglary/B&E	37	33	89.2	4	10.8
Auto Theft	86	80	93.0	6	7.0
Larceny	1,374	831	60.5	543	39.5
Fraud	7,607	5,300	69.7	2,307	30.3
Embezzlement	334	147	44.0	187	56.0
Forgery/Counterfeiting	711	494	69.5	217	30.5
Bribery	241	196	81.3	45	18.7
Tax	649	518	79.8	131	20.2
Money Laundering	886	625	70.5	261	29.5
Racketeering/Extortion	864	773	89.5	91	10.5
Gambling/Lottery	117	106	90.6	11	9.4
Civil Rights	58	53	91.4	5	8.6
Immigration	22,000	20,410	92.8	1,590	7.2
Child Pornography	1,925	1,902	98.8	23	1.2
Prison Offenses	446	396	88.8	50	11.2
Administration of Justice Offenses	1,241	948	76.4	293	23.6
Environmental/Wildlife	200	186	93.0	14	7.0
National Defense	108	99	91.7	9	8.3
Antitrust	19	19	100.0	0	0.0
Food & Drug	107	81	75.7	26	24.3
Other Miscellaneous Offenses	2,128	1,584	74.4	544	25.6

¹ Of the 75,836 cases, 594 were excluded due to missing information on offender's gender. Descriptions of variables used in this table are provided in Appendix A.

Table 25

AGE, RACE, AND GENDER OF OFFENDERS¹
Fiscal Year 2014

Gender and Age	White		Black		Hispanic		Other	
	N	%	N	%	N	%	N	%
Males	13,820	100.0	12,693	100.0	34,283	100.0	2,384	100.0
Under 21	160	1.2	305	2.4	1,457	4.2	68	2.9
21 - 25	1,107	8.0	1,950	15.4	5,050	14.7	310	13.0
26 - 30	1,877	13.6	2,510	19.8	6,542	19.1	386	16.2
31 - 35	2,080	15.1	2,636	20.8	6,643	19.4	411	17.2
36 - 40	1,755	12.7	1,906	15.0	5,675	16.6	309	13.0
41 - 50	3,335	24.1	2,270	17.9	6,514	19.0	502	21.1
Over 50	3,506	25.4	1,116	8.8	2,402	7.0	398	16.7
Females	3,472	100.0	2,182	100.0	3,829	100.0	673	100.0
Under 21	42	1.2	28	1.3	215	5.6	17	2.5
21 - 25	366	10.5	291	13.3	655	17.1	68	10.1
26 - 30	523	15.1	401	18.4	629	16.4	98	14.6
31 - 35	525	15.1	396	18.1	656	17.1	109	16.2
36 - 40	466	13.4	282	12.9	579	15.1	80	11.9
41 - 50	825	23.8	472	21.6	729	19.0	165	24.5
Over 50	725	20.9	312	14.3	366	9.6	136	20.2

¹ Of the 75,836 cases, 2,500 were excluded due to one or more of the following reasons: missing information on offender's race (2,455), missing information on offender's gender (594), or missing information on offender's age (148). Descriptions of variables used in this table are provided in Appendix A.

SOURCE: U.S. Sentencing Commission, 2014 Datafile, USSCFY14.

Table 26

CITIZENSHIP OF OFFENDERS IN EACH PRIMARY OFFENSE CATEGORY¹
Fiscal Year 2014

PRIMARY OFFENSE	TOTAL	U.S. CITIZEN		NON-U.S. CITIZEN	
		N	%	N	%
TOTAL	74,911	43,479	58.0	31,432	42.0
Murder	75	64	85.3	11	14.7
Manslaughter	49	49	100.0	0	0.0
Kidnapping/Hostage Taking	50	30	60.0	20	40.0
Sexual Abuse	545	504	92.5	41	7.5
Assault	753	684	90.8	69	9.2
Robbery	782	759	97.1	23	2.9
Arson	54	50	92.6	4	7.4
Drugs - Trafficking	21,304	15,844	74.4	5,460	25.6
Drugs - Communication Facility	342	281	82.2	61	17.8
Drugs - Simple Possession	2,269	443	19.5	1,826	80.5
Firearms	7,912	7,380	93.3	532	6.7
Burglary/B&E	37	37	100.0	0	0.0
Auto Theft	86	72	83.7	14	16.3
Larceny	1,320	1,244	94.2	76	5.8
Fraud	7,559	6,175	81.7	1,384	18.3
Embezzlement	326	321	98.5	5	1.5
Forgery/Counterfeiting	710	664	93.5	46	6.5
Bribery	239	217	90.8	22	9.2
Tax	646	615	95.2	31	4.8
Money Laundering	883	629	71.2	254	28.8
Racketeering/Extortion	861	745	86.5	116	13.5
Gambling/Lottery	117	109	93.2	8	6.8
Civil Rights	58	57	98.3	1	1.7
Immigration	22,204	1,381	6.2	20,823	93.8
Child Pornography	1,925	1,848	96.0	77	4.0
Prison Offenses	437	395	90.4	42	9.6
Administration of Justice Offenses	1,229	1,058	86.1	171	13.9
Environmental/Wildlife	182	164	90.1	18	9.9
National Defense	108	54	50.0	54	50.0
Antitrust	18	10	55.6	8	44.4
Food & Drug	102	87	85.3	15	14.7
Other Miscellaneous Offenses	1,729	1,509	87.3	220	12.7

¹ Of the 75,836 cases, 925 were excluded due to missing information on offender's citizenship status. Descriptions of variables used in this table are provided in Appendix A.

Table 27

DOCUMENT SUBMISSION BY EACH CIRCUIT AND DISTRICT¹
Fiscal Year 2014

CIRCUIT	Number of Cases	Total Documents	J & C	Statement of Reasons	Plea Agreement ²		Indictment/ Information	Presentence Report	
		Received	Received	Received	Received	No Written Plea/Trial	Received	Received	Waived
District		N	N	N	N	N	N	N	N
TOTAL	75,836	352,783	75,836	74,942	56,439	19,335	75,831	69,735	6,100
D.C. CIRCUIT	339	1,665	339	338	316	23	339	333	6
District of Columbia	339	1,665	339	338	316	23	339	333	6
FIRST CIRCUIT	2,450	11,721	2,450	2,449	1,982	467	2,449	2,391	59
Maine	199	895	199	199	99	100	199	199	0
Massachusetts	451	2,045	451	451	248	203	451	444	7
New Hampshire	150	738	150	150	139	11	150	149	1
Puerto Rico	1,477	7,230	1,477	1,476	1,372	104	1,476	1,429	48
Rhode Island	173	813	173	173	124	49	173	170	3
SECOND CIRCUIT	4,192	19,958	4,192	4,174	3,331	859	4,192	4,069	123
Connecticut	355	1,755	355	355	335	20	355	355	0
New York									
Eastern	971	4,720	971	966	845	126	971	967	4
Northern	417	1,852	417	405	262	155	417	351	66
Southern	1,690	7,932	1,690	1,689	1,191	498	1,690	1,672	18
Western	554	2,694	554	554	508	45	554	524	30
Vermont	205	1,005	205	205	190	15	205	200	5
THIRD CIRCUIT	2,501	12,008	2,501	2,489	2,065	435	2,501	2,452	49
Delaware	97	480	97	97	93	4	97	96	1
New Jersey	668	3,270	668	661	616	52	668	657	11
Pennsylvania									
Eastern	772	3,673	772	769	593	179	772	767	5
Middle	416	2,019	416	416	355	61	416	416	0
Western	486	2,278	486	486	364	122	486	456	30
Virgin Islands	62	288	62	60	44	17	62	60	2
FOURTH CIRCUIT	6,064	27,824	6,064	5,986	4,447	1,615	6,063	5,264	800
Maryland	816	3,952	816	806	738	78	816	776	40
North Carolina									
Eastern	696	3,143	696	638	495	201	696	618	78
Middle	497	2,460	497	497	473	24	497	496	1
Western	629	2,970	629	629	455	174	629	628	1
South Carolina	752	3,487	752	751	482	270	752	750	2
Virginia									
Eastern	1,630	6,711	1,630	1,621	859	769	1,629	972	658
Western	402	1,964	402	402	357	45	402	401	1
West Virginia									
Northern	345	1,696	345	345	331	14	345	330	15
Southern	297	1,441	297	297	257	40	297	293	4

Table 27 (cont.)

CIRCUIT District	Number of Cases	Total Documents	J & C	Statement of Reasons	Plea Agreement ²		Indictment/ Information	Presentence Report	
		Received N	Received N	Received N	Received N	No Written Plea/Trial N	Received N	Received N	Waived N
FIFTH CIRCUIT	16,711	73,963	16,711	16,472	8,633	8,065	16,710	15,437	1,273
Louisiana									
Eastern	313	1,454	313	310	209	103	313	309	4
Middle	180	857	180	180	137	43	180	180	0
Western	293	1,364	293	266	247	46	292	266	27
Mississippi									
Northern	224	1,102	224	220	217	7	224	217	7
Southern	270	1,318	270	268	243	27	270	267	3
Texas									
Eastern	926	4,577	926	925	877	49	926	923	2
Northern	1,377	6,393	1,377	1,376	900	477	1,377	1,363	14
Southern	6,380	28,690	6,380	6,378	3,358	3,020	6,380	6,194	186
Western	6,748	28,208	6,748	6,549	2,445	4,293	6,748	5,718	1,030
SIXTH CIRCUIT	5,250	25,112	5,250	5,214	4,291	922	5,250	5,107	143
Kentucky									
Eastern	598	2,925	598	598	547	51	598	584	14
Western	289	1,372	289	289	253	36	289	252	37
Michigan									
Eastern	960	4,631	960	958	814	144	960	939	21
Western	387	1,774	387	387	240	146	387	373	14
Ohio									
Northern	773	3,627	773	766	558	215	773	757	16
Southern	644	3,184	644	640	620	24	644	636	8
Tennessee									
Eastern	815	3,936	815	814	681	134	815	811	4
Middle	291	1,313	291	269	196	61	291	266	25
Western	493	2,350	493	493	382	111	493	489	4
SEVENTH CIRCUIT	2,931	14,179	2,931	2,925	2,480	451	2,930	2,913	18
Illinois									
Central	419	1,972	419	416	303	116	419	415	4
Northern	872	4,236	872	871	750	122	872	871	1
Southern	373	1,744	373	373	252	121	373	373	0
Indiana									
Northern	371	1,820	371	369	340	31	371	369	2
Southern	394	1,919	394	394	351	43	394	386	8
Wisconsin									
Eastern	350	1,737	350	350	340	10	350	347	3
Western	152	751	152	152	144	8	151	152	0
EIGHTH CIRCUIT	4,628	22,231	4,628	4,622	3,742	886	4,628	4,611	17
Arkansas									
Eastern	354	1,700	354	353	285	69	354	354	0
Western	320	1,572	320	320	295	25	320	317	3
Iowa									
Northern	368	1,673	368	368	201	167	368	368	0
Southern	300	1,419	300	299	221	79	300	299	1
Minnesota	291	1,425	291	291	263	28	291	289	2
Missouri									
Eastern	697	3,464	697	697	677	20	697	696	1
Western	830	3,939	830	828	624	206	830	827	3
Nebraska	595	2,820	595	594	442	153	595	594	1
North Dakota	339	1,577	339	338	222	117	339	339	0
South Dakota	534	2,642	534	534	512	22	534	528	6

Table 27 (cont.)

CIRCUIT District	Number of Cases	Total Documents	J & C	Statement of Reasons	Plea Agreement ²		Indictment/ Information	Presentence Report	
		Received N	Received N	Received N	Received N	No Written Plea/Trial N	Received N	Received N	Waived N
NINTH CIRCUIT	16,755	79,149	16,755	16,402	15,641	1,110	16,755	13,596	3,159
Alaska	156	746	156	156	131	25	156	147	9
Arizona	6,599	30,201	6,599	6,276	6,357	242	6,599	4,370	2,229
California									
Central	1,263	6,144	1,263	1,262	1,120	143	1,263	1,236	27
Eastern	912	4,487	912	909	850	62	912	904	8
Northern	703	3,395	703	700	609	94	703	680	23
Southern	3,915	18,778	3,915	3,911	3,749	164	3,915	3,288	627
Guam	99	486	99	99	90	9	99	99	0
Hawaii	291	1,350	291	290	192	99	291	286	5
Idaho	313	1,523	313	313	271	42	313	313	0
Montana	311	1,487	311	310	249	62	311	306	5
Nevada	510	2,459	510	507	424	86	510	508	2
Northern Mariana Islands	15	72	15	15	12	3	15	15	0
Oregon	602	2,861	602	590	579	22	602	488	114
Washington									
Eastern	390	1,916	390	389	367	22	390	380	10
Western	676	3,244	676	675	641	35	676	576	100
TENTH CIRCUIT	7,173	33,002	7,173	7,145	4,547	2,625	7,173	6,964	209
Colorado	541	2,642	541	541	527	14	541	492	49
Kansas	675	3,285	675	669	616	59	675	650	25
New Mexico	4,329	19,429	4,329	4,317	2,135	2,193	4,329	4,319	10
Oklahoma									
Eastern	89	402	89	89	46	43	89	89	0
Northern	251	1,178	251	251	175	76	251	250	1
Western	374	1,661	374	373	205	169	374	335	39
Utah	624	3,022	624	624	591	33	624	559	65
Wyoming	290	1,383	290	281	252	38	290	270	20
ELEVENTH CIRCUIT	6,842	31,971	6,842	6,726	4,964	1,877	6,841	6,598	244
Alabama									
Middle	223	1,089	223	223	197	26	223	223	0
Northern	448	2,124	448	440	369	79	447	420	28
Southern	397	1,919	397	397	331	66	397	397	0
Florida									
Middle	1,433	6,681	1,433	1,431	955	478	1,433	1,429	4
Northern	324	1,533	324	323	251	73	324	311	13
Southern	2,261	10,477	2,261	2,193	1,565	695	2,261	2,197	64
Georgia									
Middle	508	2,312	508	485	343	165	508	468	40
Northern	609	2,949	609	596	540	69	609	595	14
Southern	639	2,887	639	638	413	226	639	558	81

¹ Descriptions of variables used in this table are provided in Appendix A.

² The figures presented in this table regarding Plea Agreement Submission exclude from the analysis 13 cases for which the Commission was unable to determine definitively whether the defendant's guilty plea was entered pursuant to a written plea agreement.

Table 28
RATE OF SUBMISSION OF STATEMENT OF REASONS FORM
BY EACH CIRCUIT AND DISTRICT
Fiscal Year 2014

CIRCUIT District	Total	Form AO 245B ¹		Other Forms ²		No Form Received	
		N	%	N	%	N	%
TOTAL	75,836	72,418	95.5	2,533	3.3	885	1.2
D.C. CIRCUIT	339	338	99.7	0	0.0	1	0.3
District of Columbia	339	338	99.7	0	0.0	1	0.3
FIRST CIRCUIT	2,450	2,448	99.9	1	0.0	1	0.0
Maine	199	199	100.0	0	0.0	0	0.0
Massachusetts	451	451	100.0	0	0.0	0	0.0
New Hampshire	150	150	100.0	0	0.0	0	0.0
Puerto Rico	1,477	1,475	99.9	1	0.1	1	0.1
Rhode Island	173	173	100.0	0	0.0	0	0.0
SECOND CIRCUIT	4,192	4,139	98.7	35	0.8	18	0.4
Connecticut	355	355	100.0	0	0.0	0	0.0
New York							
Eastern	971	935	96.3	31	3.2	5	0.5
Northern	417	405	97.1	0	0.0	12	2.9
Southern	1,690	1,689	99.9	0	0.0	1	0.1
Western	554	554	100.0	0	0.0	0	0.0
Vermont	205	201	98.0	4	2.0	0	0.0
THIRD CIRCUIT	2,501	2,489	99.5	0	0.0	12	0.5
Delaware	97	97	100.0	0	0.0	0	0.0
New Jersey	668	661	99.0	0	0.0	7	1.0
Pennsylvania							
Eastern	772	769	99.6	0	0.0	3	0.4
Middle	416	416	100.0	0	0.0	0	0.0
Western	486	486	100.0	0	0.0	0	0.0
Virgin Islands	62	60	96.8	0	0.0	2	3.2
FOURTH CIRCUIT	6,064	5,896	97.2	95	1.6	73	1.2
Maryland	816	809	99.1	2	0.2	5	0.6
North Carolina							
Eastern	696	638	91.7	0	0.0	58	8.3
Middle	497	497	100.0	0	0.0	0	0.0
Western	629	629	100.0	0	0.0	0	0.0
South Carolina	752	751	99.9	0	0.0	1	0.1
Virginia							
Eastern	1,630	1,528	93.7	93	5.7	9	0.6
Western	402	402	100.0	0	0.0	0	0.0
West Virginia							
Northern	345	345	100.0	0	0.0	0	0.0
Southern	297	297	100.0	0	0.0	0	0.0

Table 28 (cont.)

CIRCUIT District	Total	Form AO 245B ¹		Other Forms ²		No Form Received	
		N	%	N	%	N	%
FIFTH CIRCUIT	16,711	14,939	89.4	1,533	9.2	239	1.4
Louisiana							
Eastern	313	310	99.0	0	0.0	3	1.0
Middle	180	180	100.0	0	0.0	0	0.0
Western	293	225	76.8	41	14.0	27	9.2
Mississippi							
Northern	224	220	98.2	0	0.0	4	1.8
Southern	270	268	99.3	0	0.0	2	0.7
Texas							
Eastern	926	922	99.6	3	0.3	1	0.1
Northern	1,377	1,376	99.9	0	0.0	1	0.1
Southern	6,380	6,377	100.0	1	0.0	2	0.0
Western	6,748	5,061	75.0	1,488	22.1	199	2.9
SIXTH CIRCUIT	5,250	5,111	97.4	104	2.0	35	0.7
Kentucky							
Eastern	598	598	100.0	0	0.0	0	0.0
Western	289	289	100.0	0	0.0	0	0.0
Michigan							
Eastern	960	958	99.8	1	0.1	1	0.1
Western	387	387	100.0	0	0.0	0	0.0
Ohio							
Northern	773	766	99.1	0	0.0	7	0.9
Southern	644	599	93.0	41	6.4	4	0.6
Tennessee							
Eastern	815	814	99.9	0	0.0	1	0.1
Middle	291	207	71.1	62	21.3	22	7.6
Western	493	493	100.0	0	0.0	0	0.0
SEVENTH CIRCUIT	2,931	2,845	97.1	80	2.7	6	0.2
Illinois							
Central	419	416	99.3	0	0.0	3	0.7
Northern	872	871	99.9	0	0.0	1	0.1
Southern	373	373	100.0	0	0.0	0	0.0
Indiana							
Northern	371	366	98.7	3	0.8	2	0.5
Southern	394	394	100.0	0	0.0	0	0.0
Wisconsin							
Eastern	350	273	78.0	77	22.0	0	0.0
Western	152	152	100.0	0	0.0	0	0.0
EIGHTH CIRCUIT	4,628	4,596	99.3	26	0.6	6	0.1
Arkansas							
Eastern	354	345	97.5	8	2.3	1	0.3
Western	320	320	100.0	0	0.0	0	0.0
Iowa							
Northern	368	368	100.0	0	0.0	0	0.0
Southern	300	299	99.7	0	0.0	1	0.3
Minnesota	291	274	94.2	17	5.8	0	0.0
Missouri							
Eastern	697	697	100.0	0	0.0	0	0.0
Western	830	828	99.8	0	0.0	2	0.2
Nebraska	595	594	99.8	0	0.0	1	0.2
North Dakota	339	337	99.4	1	0.3	1	0.3
South Dakota	534	534	100.0	0	0.0	0	0.0

Table 28 (cont.)

CIRCUIT District	Total	Form AO 245B ¹		Other Forms ²		No Form Received	
		N	%	N	%	N	%
NINTH CIRCUIT	16,755	15,810	94.4	593	3.5	352	2.1
Alaska	156	156	100.0	0	0.0	0	0.0
Arizona	6,599	6,276	95.1	1	0.0	322	4.9
California							
Central	1,263	1,262	99.9	0	0.0	1	0.1
Eastern	912	909	99.7	0	0.0	3	0.3
Northern	703	700	99.6	0	0.0	3	0.4
Southern	3,915	3,911	99.9	0	0.0	4	0.1
Guam	99	99	100.0	0	0.0	0	0.0
Hawaii	291	286	98.3	4	1.4	1	0.3
Idaho	313	313	100.0	0	0.0	0	0.0
Montana	311	310	99.7	0	0.0	1	0.3
Nevada	510	507	99.4	0	0.0	3	0.6
Northern Mariana Islands	15	15	100.0	0	0.0	0	0.0
Oregon	602	2	0.3	588	97.7	12	2.0
Washington							
Eastern	390	389	99.7	0	0.0	1	0.3
Western	676	675	99.9	0	0.0	1	0.1
TENTH CIRCUIT	7,173	7,101	99.0	46	0.6	26	0.4
Colorado	541	536	99.1	5	0.9	0	0.0
Kansas	675	668	99.0	3	0.4	4	0.6
New Mexico	4,329	4,312	99.6	5	0.1	12	0.3
Oklahoma							
Eastern	89	89	100.0	0	0.0	0	0.0
Northern	251	251	100.0	0	0.0	0	0.0
Western	374	373	99.7	0	0.0	1	0.3
Utah	624	591	94.7	33	5.3	0	0.0
Wyoming	290	281	96.9	0	0.0	9	3.1
ELEVENTH CIRCUIT	6,842	6,706	98.0	20	0.3	116	1.7
Alabama							
Middle	223	223	100.0	0	0.0	0	0.0
Northern	448	440	98.2	0	0.0	8	1.8
Southern	397	397	100.0	0	0.0	0	0.0
Florida							
Middle	1,433	1,431	99.9	0	0.0	2	0.1
Northern	324	323	99.7	0	0.0	1	0.3
Southern	2,261	2,193	97.0	0	0.0	68	3.0
Georgia							
Middle	508	485	95.5	0	0.0	23	4.5
Northern	609	576	94.6	20	3.3	13	2.1
Southern	639	638	99.8	0	0.0	1	0.2

¹ Cases included in this category are those in which the court submitted Form AO 245B (Revision 06/05, 09/08, or 09/11) to the Commission. Only cases in which all required pages of this form were submitted with no deletions or substantive changes are included in this category. Form AO 245B was approved by the Executive Committee of the Judicial Conference of the United States in June 2005.

² Cases are included in this category for one or more of the following reasons: one or more of the required pages of Form AO 245B were missing; deletions or substantive changes were made in Form AO 245B that prevented the USSC from collecting the information required to be submitted by 18 U.S.C. §3553(c); an outdated version of Form AO 245B was submitted; or a unique, district created, or modified form was submitted.

Appendix A

Descriptions of Datafiles and Variables

Introduction

Federal courts are required to forward to the Commission sentencing documentation on all offenders sentenced under the Sentencing Reform Act of 1984 (SRA), except in cases that solely involve petty offenses. Standard information on each case is extracted from sentencing documents received and computerized for analysis.

Given the nature of the datafile and reporting requirements, the following are not included: cases initiated but for which no convictions were obtained, offenders convicted for whom no sentences were yet issued, and offenders sentenced but for whom no sentencing documents were submitted to the Commission. Because the Commission collects information only on cases sentenced under the guidelines, information on cases sentenced under prior law (pre-guidelines) during the current fiscal year is not available in this dataset. When cases are sentenced under both prior law and the guidelines, only the guideline relevant information is coded in the dataset. Cases in which a sentence of death was imposed also are not available in this dataset for this same reason.

Note that for all tables, total percentages may not add up to exactly 100 percent due to rounding.

Variables

The following section describes the variables used in this report.

Above Guideline Range with *Booker*/18 U.S.C. § 3553

Above Guideline Range with Booker/18 U.S.C. § 3553 consists of cases with a sentence above the guideline range with no departure indicated and that cite *U.S. v. Booker*, 18 U.S.C. § 3553, or related factors as one of the reasons for sentencing outside of the guideline system.

Age

The *Age* of the offender on the day of sentencing is calculated using the date of sentencing as reported in the Judgment and Commitment Order and the offender's date of birth as reported either in the Presentence Report or in the case submission information provided by the court when submitting the case to the Commission.

All Remaining Cases Above Guideline Range

All Remaining Cases Above Guideline Range consists of cases sentenced above the guideline range that cannot be classified into any of the other three above the range categories. This category includes, for example, cases in which no reason is provided for a sentence above the guideline range.

All Remaining Cases Below Guideline Range

All Remaining Cases Below Guideline Range consists of cases sentenced below the guideline range that cannot be classified into any of the other three below the range categories. This category includes, for example, cases in which no reason is provided for a sentence below the guideline range.

Below Guideline Range with *Booker*/18 U.S.C. § 3553

Below Guideline Range with Booker/18 U.S.C. § 3553 consists of cases with a sentence below the guideline range with no departure indicated and that cite *U.S. v. Booker*, 18 U.S.C. § 3553, or related factors as one of the reasons for sentencing outside of the guideline system.

Circuit

Information on judicial *Circuit* is generated by computer using the location of the judicial district in which the offender was sentenced.

Citizenship Status

Information on the *Citizenship Status* of offenders is obtained from the presentence report. Offenders are categorized as one of the following: “U.S. citizen,” “resident alien,” “illegal alien,” “extradited alien,” and “non-U.S. citizen, alien status unknown.” The latter four categories are collapsed into the category of “non-U.S. citizen.”

Starting in Fiscal Year 2014, for cases in which the Commission does not receive the PSR (most commonly when the court waives the preparation of the PSR), values for several demographic variables are taken from the Probation and Pretrial Services Automated Case Tracking System (PACTS) datafile created by the Probation and Pretrial Services Office at the Administrative Office of the U.S. Courts. Cases are matched using unique case identifiers and the demographic information which would otherwise be missing in these cases due to the lack of a PSR is imported from the PACTS datafile.

Degree of Decrease

Degree of Decrease is calculated based on the difference between the length of imprisonment (not including any months of alternative confinement as defined in USSG §5C1.1) and the guideline minimum for the following categories of below range cases: downward departure from guideline range, downward departure with *Booker/18* U.S.C. § 3553, below guideline range with *Booker/18* U.S.C. § 3553, all remaining cases below guideline range, USSG §5K1.1 substantial assistance cases, USSG §5K3.1 early disposition program cases, and other government sponsored cases. Life sentences and cases where the guideline minimum is zero months or life are all excluded from all degree of decrease calculations due to the logical difficulty in calculating a decrease from these values.

Degree of Increase

Degree of Increase is calculated based on the difference between the guideline maximum and the length of imprisonment (not including any months of alternative confinement as defined in USSG §5C1.1) for the following categories of above range cases: upward departure from guideline range, upward departure with *Booker/18* U.S.C. § 3553, above guideline range with *Booker/18* U.S.C. § 3553, all remaining cases above guideline range. Life sentences, sentences of probation, and cases where the guideline minimum is life are all excluded from all degree of increase calculations due to the logical difficulty in calculating an increase from these values.

District

Information on the judicial *District* in which sentencing occurred is obtained from the Judgment and Commitment Order.

Document Submission Rates

Five documents are represented in the document submission rate table: Judgment and Commitment Order (J&C), Presentence Report (PSR), Statement of Reasons (SOR), Indictment/Information (Ind), and Plea Agreements (Plea). The J&C and PSR generally are submitted in a standardized format. PSRs waived by the court are indicated in a separate column. Standardized forms for the Statement of Reasons are most frequently submitted; however, transcripts or partial transcripts from the sentencing hearing are also included as *Statement of Reasons Received*. Cases in which the Commission was unable to determine definitively whether the offender’s guilty plea was entered pursuant to a written agreement are excluded from the Plea Agreement totals. The total requested documents received column is derived from adding the total number of received documents from the Judgment and Commitment Order (J&C), Presentence Report (PSR), Statement of Reasons (SOR), Indictment/Information (Ind), and Plea Agreements (Plea). The total requested documents not received column is derived from adding the total number of not received documents from the Judgment and Commitment Order (J&C), Presentence Report (PSR), Statement of Reasons (SOR), Indictment/Information (Ind), and Plea Agreements (Plea). Cases where the PSR is waived, there is no written plea agreement/trial, and where the Commission was unable to

definitively determine whether the offender's guilty plea was entered pursuant to a written plea agreement are all excluded from the calculations for the total received documents column.

Downward Departure From Guideline Range

Downward Departure From Guideline Range consists of cases with departures below the guideline range that do not cite as a reason either *U.S. v. Booker*, 18 U.S.C. § 3553, or factors or reasons specifically prohibited in the provisions, policy statements, or commentary of the federal guidelines manual.

Downward Departures with Booker/18 U.S.C. § 3553

Downward Departures with Booker/18 U.S.C. § 3553 consists of cases with a sentence below the guideline range that include both a departure (see Downward Departure From Guideline Range) as well as a sentence outside the guideline system mentioning either *U.S. v. Booker*, 18 U.S.C. § 3553, or related factors as a reason for sentencing below the guideline range.

Drug Offense Guideline

Drug Offense Guideline information is obtained from the Presentence Report and is based on the guidelines in USSG Chapter Two, Part D. The six guidelines featured in the tables (USSG §2D1.1, §2D1.2, §2D1.5, §2D1.6, §2D1.8, and §2D2.1) represent the vast majority of drug cases.

Drug Type

Information on *Drug Type* is obtained from the Presentence Report, Judgment and Commitment Order or Plea Agreement. It is recorded only if at least one of the statutes of conviction recorded by the Commission is a title 21 U.S. Code offense or an offense under another title when the underlying conduct involves a controlled substance. Information about type of drug in the text and tables is derived from the primary drug type (*i.e.*, the type that produces the highest base offense level). The category *Marijuana* includes Hashish and Hashish oil. The category *Methamphetamine* includes pure (actual) methamphetamine, "ICE," methamphetamine mixture, and methamphetamine precursors sentenced under any drug guideline other than USSG §2D1.11 (for example ephedrine and pseudoephedrine). The category *Listed Chemicals* includes any chemicals listed under USSG §2D1.11. All drug types not listed separately in this report are collapsed into the "other" drug category.

Education

Information on education of the offender is obtained from the Presentence Report and is collapsed into general categories. Technical, military, and vocational training as well as course work at community colleges is included in the *Some College* category. A general equivalency degree (GED) is included in the *High School Graduate* category.

Gender

Gender of the defendant is obtained from the Presentence Report.

Starting in Fiscal Year 2014, for cases in which the Commission does not receive the PSR (most commonly when the court waives the preparation of the PSR), values for several demographic variables are taken from the Probation and Pretrial Services Automated Case Tracking System (PACTS) datafile created by the Probation and Pretrial Services Office at the Administrative Office of the U.S. Courts. Cases are matched using unique case identifiers and the demographic information which would otherwise be missing in these cases due to the lack of a PSR is imported from the PACTS datafile.

Government Sponsored Below Range

Government sponsorship of a below range sentence is determined by a yearly case review by USSC staff of both the reasons for the below range sentence and the coding by USSC staff of any indication of government sponsorship as indicated on the Statement of Reasons for below range cases. The SOR form has specific check-boxes to indicate the origins of the departure, but cases that do not use this form may also indicate in writing the origins of the departure. Additionally, all cases with one or more of the following reasons were classified as being sponsored by the government regardless of whether the SOR indicated sponsorship: pursuant to a plea agreement (binding, non-binding, or unknown), fast track, savings to the government, early plea, deportation, waiver of indictment and/or appeal, other government

motion, global disposition, due to stipulations, facilitated early release of a material witness, joint recommendation, and large number of immigration cases. Note that because the USSC reviews the reasons on a yearly basis, this list might be modified slightly from year to year. Unless otherwise broken out in the table or chart, this category also includes cases with USSG §5K3.1 Early Disposition Program (EDP) departures and USSG §5K1.1 substantial assistance departures.

Guideline Offenders Sentenced

Each *Guideline Offender Sentenced* or case, as recorded by the USSC, involves a single sentencing event for a single offender. Multiple counts, and even multiple indictments, are considered a single sentencing event if sentenced at the same time by the same judge. A single offender may appear in more than one case if involved in more than one sentencing event during the fiscal year. Co-offenders in the same sentencing will each appear as separate cases.

Guideline Sentencing Range

The *Guideline Sentencing Range* is taken from the Statement of Reasons provided by the sentencing court. Alternatively, if the Statement of Reasons is missing, then the information is taken from the presentence report.

For tables in this report, unless otherwise indicated, the guideline sentencing range does not take into account applicable statutory restrictions on either the maximum or the minimum of the range; therefore, it may differ from the available range, which does take into account the statutory restrictions.

Mode of Conviction

Information on *Mode of Conviction* is obtained from the Judgment and Commitment Order. Offenders sentenced subsequent to a plea of guilty or *nolo contendere* are included in the *Plea* category. Offenders sentenced subsequent to a trial by judge or jury are included in the *Trial* category. Rare cases involving both a plea and a trial are included in the *Trial* category.

Outside of the Range Attribution Categories

All categories replicate the list of checkboxes available on the SOR Form. Not all checkbox categories are available in both the departure section and sentences outside the guideline system section on this form and multiple checkboxes may be indicated in a single case so that totals in a table may exceed the total number of cases. USSC uses these checkboxes in determining government sponsorship: all cases in which one of the pursuant to a plea agreement boxes is indicated are attributed to the government. Additionally cases where a USSG §5K1.1, USSG §5K3.1, or other government motion checkbox was indicated in the pursuant to a motion not in a plea agreement section are also attributed to one of the government sponsored categories. Additionally, other types of SOR forms may indicate sponsorship in writing, and these attributions are also included in the appropriate category.

Position of Sentence

The *Position of Sentence* describes within-range guideline sentences in terms of their relative positions within their applicable guideline ranges. Only cases with complete information from the Statement of Reasons are used for this table. The *Position of Sentence* is determined by dividing the available range in half. This allows a sentence to fall into one of five distinct categories: the guideline minimum; the exact midpoint of the range; the guideline maximum; the lower-half of the range (when not at the guideline minimum); and the upper-half of the range (when not at the guideline maximum). The “available range” is the guideline range with applicable statutory restrictions on either the maximum or the minimum of the range taken into account. (For cases in which guideline USSG §5C1.2 was applied, in accordance with the provisions of the guideline, the statutory restrictions on the minimum of the range are removed according to 18 U.S.C. § 3553(f).) In cases in which the sentence is located outside the available sentencing range, departure information is provided as reported by the sentencing court. Differences in the number and percentage of cases in each range quarter may differ from other tables presented in this report; this is due to the exclusion of any case missing both complete information from the Statement of Reasons and information on statutory minima and maxima.

Primary Offense Category

Information on *Primary Offense Category* is obtained from the Judgment and Commitment Order. The “primary” offense for the case is determined to be the offense applicable to the count of conviction with the highest statutory maximum. If two or more counts are found to have the same statutory maximum, “primary” offense is selected according to which count of conviction has the highest statutory minimum. Finally, in the event of a small number of cases still tied, the offense type that best represented the nature of the criminal behavior is chosen.

For convenience in analysis, a summary variable describing “primary offense category” is derived. This is generated by grouping similar primary offenses into a smaller set of categories. Note that the primary offense categories differ between the individual and organizational offender datafiles. Listed below are the offense types that are grouped into each of the primary offense categories used in the individual datafile tables for this report:

Murder includes first degree murder, felony with death resulting, second degree murder, and conspiracy to murder (with death resulting).

Manslaughter includes both involuntary and voluntary manslaughter.

Kidnapping/Hostage Taking includes ransom taking and hostage/kidnapping.

Sexual Abuse includes sexual abuse of a minor, transportation of minor for sex, sexual abuse of a ward, criminal sexual abuse, and abusive sexual contact.

Assault includes attempt to commit murder, assault with intent to murder, threatening communication, aggravated assault, conspiracy with attempt to murder, obstructing or impeding officers, minor assault, and conspiracy that includes assault with attempt to murder.

Robbery includes bank robbery, aggravated bank robbery, Hobbs Act robbery, mail robbery, other robbery, and carjacking.

Arson also includes damage by explosives.

Drugs - Trafficking includes drug distribution/manufacture, drug distribution/manufacture – conspiracy, continuing criminal enterprise, drug distribution – employee under 21, drug distribution near school, drug import/export, drug distribution to person under 21, and establish/rent drug operation.

Drugs - Communication Facility includes use of a communication facility in a drug trafficking offense.

Drugs - Simple Possession includes distribution of a small amount of marijuana and simple possession.

Firearms includes unlawful possession/transportation of firearms or ammunition; possession of guns/explosives on aircraft; unlawful trafficking, etc. in explosives; possession of guns/explosives in federal facility/schools; use of fire or explosives to commit felony; and use of firearms or ammunition during crime.

Burglary/Breaking & Entering includes post office burglary, burglary of DEA premises (pharmacy), burglary of other structure, bank burglary, and burglary of a residence.

Auto Theft includes auto theft (including parts), receipt/possession of stolen auto or parts, and altered identification numbers/trafficking in altered (auto).

Larceny includes bank larceny, theft from benefit plans, other theft – mail/post office, receipt/possession of stolen property (not auto), other theft – property, larceny/theft-mail/post office, larceny/theft – property (not auto), and theft from labor union.

Fraud includes odometer laws and regulations, insider trading, and fraud and deceit.

Embezzlement includes embezzlement – property, embezzlement from labor unions, embezzlement – mail/post office, embezzlement from benefit plans, and bank embezzlement.

Forgery/Counterfeiting includes counterfeit bearer obligations and forgery/counterfeit (non-bearer obligations).

Bribery includes payment to obtain office, bribe involving officials, bribery – bank loan/commercial, loan or gratuity to bank examiner, etc., gratuity involving officials, and bribe or gratuity affecting employee plan.

Tax includes receipt/trafficking in smuggled property, aid, etc., in tax fraud; fraud – tax returns, statements, etc.; fraud, false statement – perjury; failure to file or pay; tax evasion; evading import duties (smuggling); failure to collect or account for taxes; regulatory offenses – taxes; failure to deposit taxes in trust account; non-payment of taxes; conspiracy to avoid taxes; and offenses relating to withholding statements.

Money Laundering includes laundering of monetary instruments, monetary transaction from unlawful activity, failure to file currency report, and failure to report monetary transactions.

Racketeering/Extortion includes extortionate extension of credit, blackmail, extortion by force or threat, Hobbs Act extortion, travel in aid of racketeering, crime relating to racketeering, and violent crimes in aid of racketeering.

Gambling/Lottery includes engaging in a gambling business, transmission of wagering information, obstruction to facilitate gambling, and interstate transportation of wagering paraphernalia.

Civil Rights includes interference with rights under color of law; force or threats to deny benefits or rights; obstructing an election or registration; manufacture, etc. – eavesdropping device; other deprivations/discrimination; obstructing correspondence; peonage, servitude, and slave trade; intercept communication or eavesdropping; and conspiracy to deprive individual of civil rights.

Immigration includes trafficking in U.S. passports; trafficking in entry documents; failure to surrender naturalization certificate; fraudulently acquiring U.S. passports; smuggling, etc.; unlawful alien; fraudulently acquiring entry documents; and unlawfully entering the U.S.

Pornography/Prostitution includes dealing in obscene matter, transportation of minor for prostitution, transportation for prostitution/sex (adult), sexual exploitation of minors, materials involving sexual exploitation of minors, obscene telephone or broadcasting, and selling or buying children for pornography. This primary offense category was discontinued in fiscal year 2010. Some of the offenses that were grouped into this primary offense category in prior fiscal years are grouped into the *Child Pornography* primary offense type. All other offenses that were grouped into this primary offense category in prior fiscal years are included in the *Other Miscellaneous Offenses* primary offense category.

Child Pornography includes the sale, distribution, transportation, shipment, receipt, or possession of materials involving the sexual exploitation of minors. This primary offense category was created in fiscal year 2010.

Prison Offenses includes contraband in prisons, riots in federal facilities, and escape.

Administration of Justice Offenses includes commission of offense while on release, bribery of a witness, failure to appear by offender, contempt, failure to appear by material witness, obstruction of justice, payment of witness, perjury or subornation of perjury, misprision of a felony, and accessory after the fact.

Environmental/Wildlife includes waste discharge, specially protected fish, wildlife, and plants (waste discharge is presented as a separate offense category in Tables 51 and 52).

National Defense includes evasion of export controls and exportation of arms, etc., without license.

Antitrust includes bid-rigging, price-fixing, and market allocation agreement.

Food & Drug includes false information or tampering with products, tampering to injure business, tampering with risk of death or injury, and violation of regulations involving food, drugs, etc.

Other Miscellaneous Offenses includes illegal use of regulatory number – drugs; illegal transfer of drugs; illegal regulatory number to get drugs; drug paraphernalia; forgery/fraud for drugs; dangerous devices to protect drugs; manufacture drugs against quota; endangering life while manufacturing drugs; operate carrier under drugs; endangerment from hazardous/toxic substances; mishandling substances, records, etc.; threat of tampering with public water system; hazardous devices on federal lands; mishandling other pollutants, records, etc.; improper storage of explosives; recordkeeping violation – explosives; possession of other weapon – on aircraft, in federal facility; failure to report theft of explosives; feloniously mailing injurious articles; transport of hazardous material in commerce; interference with flight crew, other offense – aboard aircraft; criminal infringement of copyright/trademark; conflict of interest; unauthorized payment; non-drug forfeiture; impersonation; false statement to Employee Act; reporting offenses – labor related; criminal infringement of trademark; unlawful conduct relating to control/cigarettes; trespass; destruction of property; destruction of mail; aircraft piracy; conspiracy to murder (no death, assault, or attempt); conspiracy to commit murder; and all other miscellaneous offenses not previously listed in any of the other categories.

Race

Information on *Race* of the offender is obtained from the Presentence Report in separate categories of race and ethnicity (*White, Black, Native American or Alaskan Native, Asian or Pacific Islander, Multiracial, and “Other”*). Ethnicity data indicate whether an offender is of Hispanic origin. (For purposes of this report, offenders whose ethnic background is designated as Hispanic are represented as Hispanic in all tables regardless of racial background.) The *Other* category includes offenders of Native American, Alaskan Native, Asian or Pacific Islander, Multiracial, and “Other” origin.

Starting in Fiscal Year 2014, for cases in which the Commission does not receive the PSR (most commonly when the court waives the preparation of the PSR), values for several demographic variables are taken from the Probation and Pretrial Services Automated Case Tracking System (PACTS) datafile created by the Probation and Pretrial Services Office at the Administrative Office of the U.S. Courts. Cases are matched using unique case identifiers and the demographic information which would otherwise be missing in these cases due to the lack of a PSR is imported from the PACTS datafile.

Sentence Length

Sentence Length reports the mean and median terms of the sentence imposed in months. This information is obtained from the Judgment and Commitment Order. Sentence lengths expressed in days are rounded to the nearest month.

Probation sentences are included as zero months. Any portion of a sentence which is an alternative confinement as described in USSG §5C1.1 is included. Cases in which a sentence is imposed, but where the length is indeterminable, are excluded. However, sentences in cases where the court imposed a sentence of time served but did not report the amount of time that was served are included as zero months.

In cases where the court imposes a sentence of life imprisonment, a numeric value is necessary to include these cases in any sentence length analysis. Accordingly, life sentences are reported as 470 months, a length consistent with the average life expectancy of federal criminal offenders given the average age of federal offenders. Also, sentences of greater than 470 months are also reported as 470 months for some analyses. The footnote in the relevant tables and figures indicates when this occurs.

Type of Guideline Sentence Imposed

Using sentencing information obtained from the Judgment and Commitment Order, the *Total Receiving Prison* column includes the number of offenders sentenced (and percent of *Total Cases*) who received a commitment to the Bureau of Prisons. This column is the sum of cases in *Prison* and the *Prison/Community Split Sentence* categories.

The *Prison* category includes offenders sentenced to a term of imprisonment only, with no additional conditions of community confinement, home detention or intermittent confinement.

The *Prison/Community Split Sentence* category includes all cases in which offenders received prison and conditions of alternative confinement as defined in USSG §5C1.1. This category includes, but is not limited to, Zone A, Zone B, or Zone C cases receiving prison with additional conditions of a term of community confinement, home detention, or intermittent confinement.

The *Total Receiving Probation* column includes the number of offenders sentenced (and the percent of *Total Cases*) who received a term of probation with or without a condition of community confinement, intermittent confinement, or home detention. This column also represents the total of the *Probation Only* and *Probation and Confinement* categories.

The *Probation Only* column includes the number of offenders who received a term of probation without a condition of community confinement, intermittent confinement, or home detention.

Probation and Confinement includes the number of offenders who received a term of probation with a condition of community confinement, intermittent confinement, or home detention.

Upward Departure From Guideline Range

Upward Departure From Guideline Range consists of cases with departures above the guideline range which do not cite as a reason either *U.S. v. Booker*, 18 U.S.C. § 3553, or factors or reasons specifically prohibited in the provisions, policy statements, or commentary of the federal guidelines manual.

Upward Departure with *Booker*/18 U.S.C. § 3553

Upward Departure with Booker/18 U.S.C. § 3553 consists of cases with a sentence above the guideline range that includes both a departure (see Upward Departure From Guideline Range) as well as a sentence outside the guideline system mentioning either *U.S. v. Booker*, 18 U.S.C. § 3553, or related factors as a reason for sentencing above the guideline system.

Year

Information on *Year* is obtained from the Judgment and Commitment Order. Unless otherwise indicated, the sentencing year is defined as the fiscal year in which the defendant was sentenced.

Zone

The *Sentencing Table* is categorized into sentencing *Zones*. Courts may impose various types of punishment as alternatives to imprisonment. Alternative types of punishment include probation, home detention, community confinement, and intermittent confinement. Imposition of alternative types of punishment is restricted to defendants within specific sentencing zones.

Zone A: a guideline range is in *Zone A* when the minimum term of imprisonment specified is zero months;

Zone B: a guideline range is in *Zone B* when the minimum term of imprisonment specified is at least one but not more than six months;

Zone C: a guideline range is in *Zone C* when the minimum term of imprisonment specified is eight months when criminal history category is four or less, and nine months if the criminal history category is greater than four;

Zone D: a guideline range is in *Zone D* when the minimum term of imprisonment specified is 12 months or more.

See Chapter 5 of the *Guidelines Manual* for a description of alternatives to imprisonment and the conditions under which they are applicable.

Appendix B:
List of Quarterly Report Tables and Figures
and Comparable FY14 *Sourcebook* Number/Letter

<u>Quarterly Report Tables/Figures</u>	<u>Comparable <i>Sourcebook</i> Tables/Figures</u>
Table 1	Table N
Table 2	Table 26
Table 3	Table 27
Figure A	N/A
Figure B	N/A
Table 4	N/A
Table 5	Table 28
Table 6	Table 28A
Table 7	Table 30
Table 8	Table 30A
Table 9	Table 31
Table 10	Table 31A
Table 11	Table 31B
Table 12	Table 31C
Table 13	Table 31D
Table 14	Table 32
Table 15	Table 32A
Table 16	Table 32B
Table 17	Table 32C
Table 18	Table 12
Table 19	Table 13
Figure C	N/A
Figure D	N/A
Figure E	N/A
Figure F	N/A
Figure G	N/A
Figure H	N/A
Figure I	N/A
Table 20	Table 29
Figure J	Figure A
Table 21	Table 3
Table 22	Table 11
Figure K	N/A

Table 23	Table 4
Table 24	Table 5
Table 25	Table 7
Table 26	Table 9
Table 27	Table 1
Table 28	N/A