

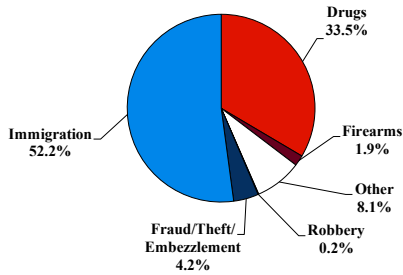
# District at a Glance

## Southern District of California

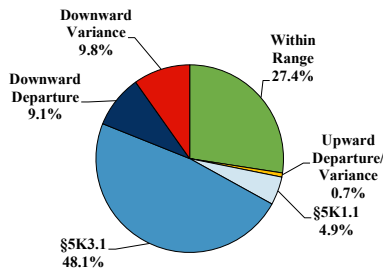
### Fiscal Year 2025



#### Type of Crime



#### Sentence Imposed Relative to the Guideline Range



#### SENTENCING INFORMATION BY TYPE OF CRIME

	TOTAL	Immigration	Drug Trafficking	Firearms	Fraud/Theft /Embezzle	Robbery	Child Porn	Money Laundering	All Other
<b>Total</b>	<b>2,661</b>	<b>1,388</b>	<b>881</b>	<b>50</b>	<b>113</b>	<b>4</b>	<b>22</b>	<b>99</b>	<b>104</b>
Mean Sentence (months)	18	7	33	26	10	105	67	31	30
Median Sentence (months)	8	4	24	23	4	110	42	12	4

#### IMPRISONMENT

<b>Total Receiving Imprisonment</b>	<b>2,536</b>	<b>1,348</b>	<b>843</b>	<b>47</b>	<b>95</b>	<b>4</b>	<b>22</b>	<b>92</b>	<b>85</b>
Prison Only	2,402	1,306	772	42	90	3	22	88	79
Up to 12 Months	1,283	1,047	80	9	58	0	1	35	53
13 to 60 Months	979	256	595	29	27	1	15	41	15
61 to 120 Months	100	3	79	3	4	0	4	5	2
Over 120 Months	40	0	18	1	1	2	2	7	9
Prison and Alternatives	134	42	71	5	5	1	0	4	6

#### PROBATION

<b>Total Receiving Probation</b>	<b>125</b>	<b>40</b>	<b>38</b>	<b>3</b>	<b>18</b>	<b>0</b>	<b>0</b>	<b>7</b>	<b>19</b>
Probation Only	90	32	21	3	12	0	0	4	18
Probation and Alternatives	35	8	17	0	6	0	0	3	1

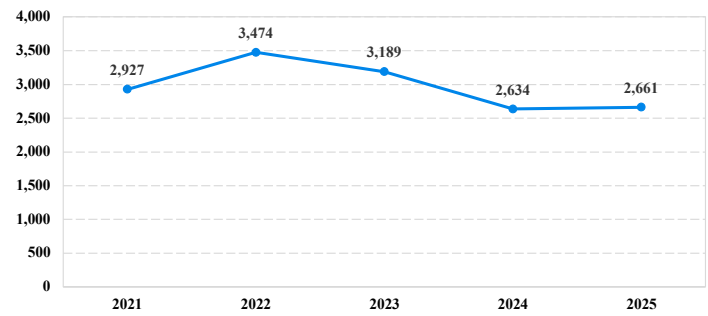
#### FINE ONLY

<b>Total</b>	<b>0</b>	<b>0</b>	<b>0</b>	<b>0</b>	<b>0</b>	<b>0</b>	<b>0</b>	<b>0</b>	<b>0</b>
--------------	----------	----------	----------	----------	----------	----------	----------	----------	----------

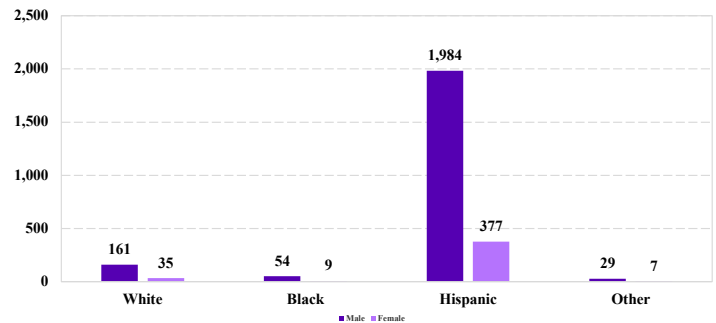
Cases with indeterminable sentence terms are excluded from the calculation of the Mean Sentence or Median Sentence category. Sentences greater than 470 months and probation were included in the sentence average computations as 470 months and zero months, respectively. Cases in the Total Receiving Imprisonment, Total Receiving Probation, and Fine Only categories total 100 percent of all cases. Cases missing information required for a specific analysis were excluded from that analysis. Descriptions of variables used in this analysis are provided in Appendix A.

SOURCE: U.S. Sentencing Commission, 2021 - 2025 Datafiles, USSCFY21 - USSCFY25.

#### Number of Sentenced Individuals Over Time



#### Race and Gender



#### Citizenship, Guilty Pleas, and Trials

