

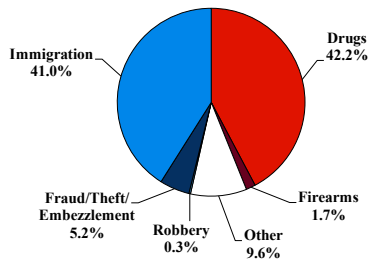
District at a Glance

Southern District of California

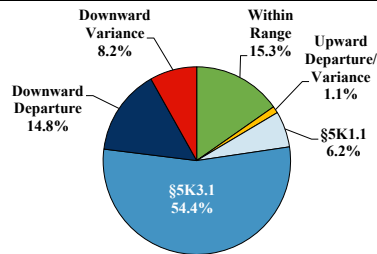
Fiscal Year 2024



Type of Crime



Sentence Imposed Relative to the Guideline Range



SENTENCING INFORMATION BY TYPE OF CRIME

	TOTAL	Immigration	Drug Trafficking	Firearms	Fraud/Theft /Embezzle	Robbery	Child Porn	Money Laundering	All Other
	2,634	1,081	1,103	44	136	7	14	119	130
Mean Sentence (months)	22	9	33	34	12	64	59	29	27
Median Sentence (months)	13	6	24	25	6	57	50	13	6

IMPRISONMENT

Total Receiving Imprisonment	2,496	1,039	1,059	41	119	7	14	112	105
Prison Only	2,334	1,000	960	36	113	7	13	106	99
Up to 12 Months	969	689	118	3	62	0	0	43	54
13 to 60 Months	1,183	307	714	26	49	4	8	47	28
61 to 120 Months	148	4	104	6	2	3	4	15	10
Over 120 Months	34	0	24	1	0	0	1	1	7
Prison and Alternatives	162	39	99	5	6	0	1	6	6

PROBATION

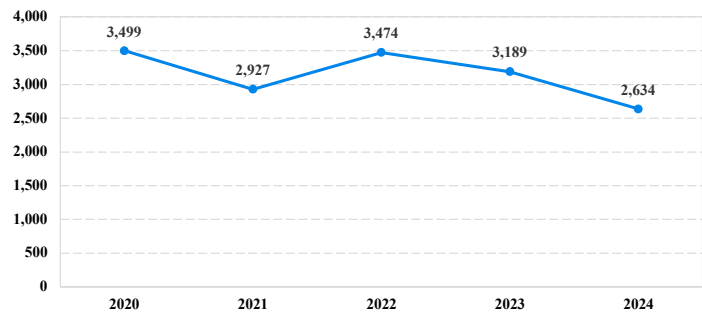
Total Receiving Probation	137	42	44	3	16	0	0	7	25
Probation Only	102	32	29	1	15	0	0	6	19
Probation and Alternatives	35	10	15	2	1	0	0	1	6

FINE ONLY	1	0	0	0	1	0	0	0	0
-----------	---	---	---	---	---	---	---	---	---

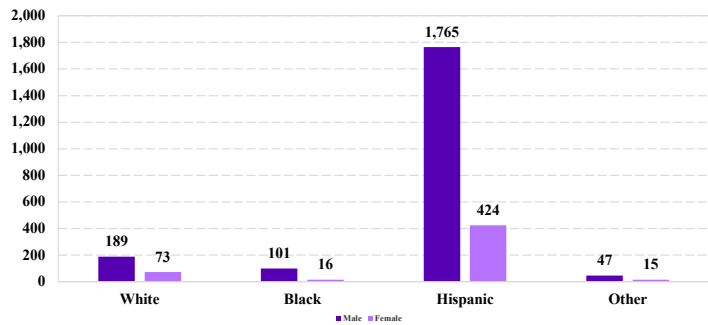
Cases with indeterminable sentence terms are excluded from the calculation of the Mean Sentence or Median Sentence category. Sentences greater than 470 months and probation were included in the sentence average computations as 470 months and zero months, respectively. Cases in the Total Receiving Imprisonment, Total Receiving Probation, and Fine Only categories total 100 percent of all cases. Cases missing information required for a specific analysis were excluded from that analysis. Descriptions of variables used in this analysis are provided in Appendix A.

SOURCE: U.S. Sentencing Commission, 2020 - 2024 Datafiles, USSCFY20 - USSCFY24.

Number of Sentenced Individuals Over Time



Race and Gender



Citizenship, Guilty Pleas, and Trials

