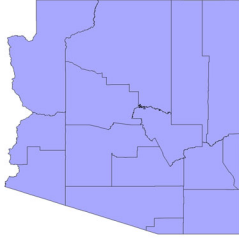


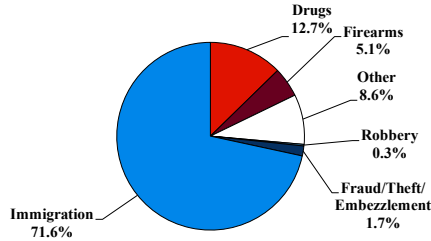
District at a Glance

District of Arizona

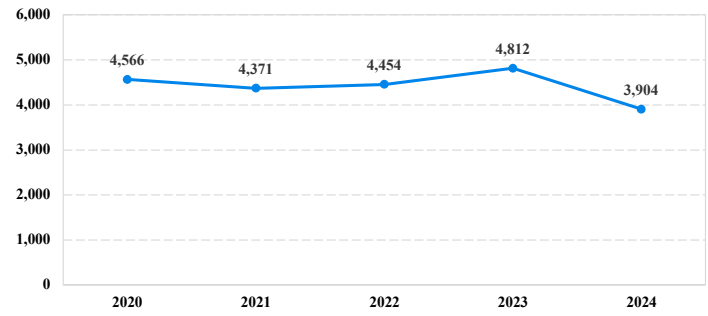
Fiscal Year 2024



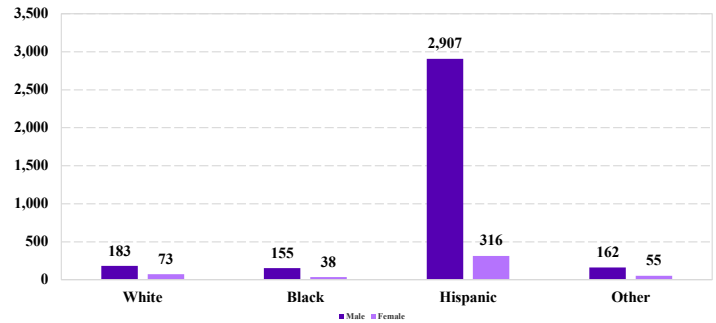
Type of Crime



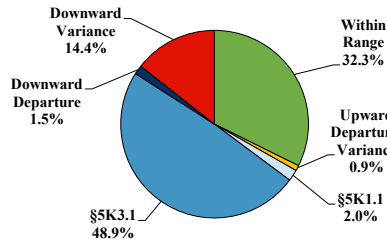
Number of Sentenced Individuals Over Time



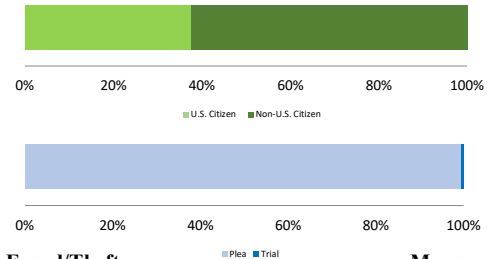
Race and Gender



Sentence Imposed Relative to the Guideline Range



Citizenship, Guilty Pleas, and Trials



SENTENCING INFORMATION BY TYPE OF CRIME

	TOTAL	Immigration	Drug Trafficking	Firearms	Fraud/Theft /Embezzle	Robbery	Child Porn	Money Laundering	All Other
Total	3,904	2,796	492	201	68	10	11	37	289
Mean Sentence (months)	16	9	33	17	11	95	66	30	46
Median Sentence (months)	8	6	24	12	1	79	42	12	18

IMPRISONMENT

	TOTAL	Immigration	Drug Trafficking	Firearms	Fraud/Theft /Embezzle	Robbery	Child Porn	Money Laundering	All Other
Total Receiving Imprisonment	3,526	2,579	465	153	42	10	11	28	238
Prison Only	3,450	2,558	444	147	42	9	9	28	213
Up to 12 Months	1,986	1,803	48	49	22	1	0	9	54
13 to 60 Months	1,324	742	344	90	18	3	6	12	109
61 to 120 Months	99	12	40	7	2	3	2	6	27
Over 120 Months	41	1	12	1	0	2	1	1	23
Prison and Alternatives	76	21	21	6	0	1	2	0	25

PROBATION

	TOTAL	Immigration	Drug Trafficking	Firearms	Fraud/Theft /Embezzle	Robbery	Child Porn	Money Laundering	All Other
Total Receiving Probation	375	216	27	48	24	0	0	9	51
Probation Only	359	207	24	47	23	0	0	9	49
Probation and Alternatives	16	9	3	1	1	0	0	0	2

FINE ONLY

	TOTAL	Immigration	Drug Trafficking	Firearms	Fraud/Theft /Embezzle	Robbery	Child Porn	Money Laundering	All Other
Total	3	1	0	0	2	0	0	0	0

Cases with indeterminable sentence terms are excluded from the calculation of the Mean Sentence or Median Sentence category. Sentences greater than 470 months and probation were included in the sentence average computations as 470 months and zero months, respectively. Cases in the Total Receiving Imprisonment, Total Receiving Probation, and Fine Only categories total 100 percent of all cases. Cases missing information required for a specific analysis were excluded from that analysis. Descriptions of variables used in this analysis are provided in Appendix A.

SOURCE: U.S. Sentencing Commission, 2020 - 2024 Datafiles, USSCFY20 - USSCFY24.