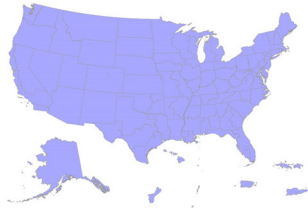
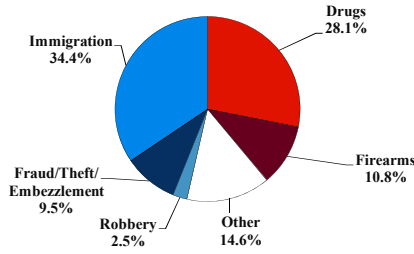


District at a Glance

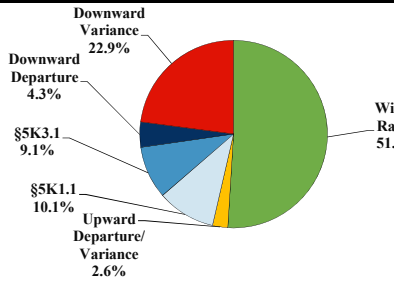
National Fiscal Year 2018



Type of Crime



Sentence Imposed Relative to the Guideline Range



SENTENCING INFORMATION BY TYPE OF CRIME

	TOTAL	Immigration	Drug Trafficking	Firearms	Fraud/Theft /Embezzle	Robbery	Child Porn	Money Laundering	All Other
Total	69,425	23,883	18,747	7,512	6,620	1,720	1,416	1,297	8,230
Mean Sentence (months)	44	10	76	53	23	106	104	59	54
Median Sentence (months)	20	6	60	41	12	88	87	35	12

IMPRISONMENT

	TOTAL	Immigration	Drug Trafficking	Firearms	Fraud/Theft /Embezzle	Robbery	Child Porn	Money Laundering	All Other
Total Receiving Imprisonment	63,065	22,619	18,052	7,133	4,848	1,701	1,403	1,132	6,177
Prison Only	60,976	22,390	17,366	6,865	4,472	1,631	1,371	1,082	5,799
Up to 12 Months	19,809	15,121	1,119	408	1,238	36	23	153	1,711
13 to 60 Months	25,850	7,089	7,809	4,401	2,693	487	403	528	2,440
61 to 120 Months	9,436	175	5,280	1,637	427	579	564	225	549
Over 120 Months	5,881	5	3,158	419	114	529	381	176	1,099
Prison and Alternatives	2,089	229	686	268	376	70	32	50	378

PROBATION

	TOTAL	Immigration	Drug Trafficking	Firearms	Fraud/Theft /Embezzle	Robbery	Child Porn	Money Laundering	All Other
Total Receiving Probation	5,838	1,263	691	376	1,683	19	13	164	1,629
Probation Only	4,444	1,113	446	250	1,214	12	8	111	1,290
Probation and Alternatives	1,394	150	245	126	469	7	5	53	339

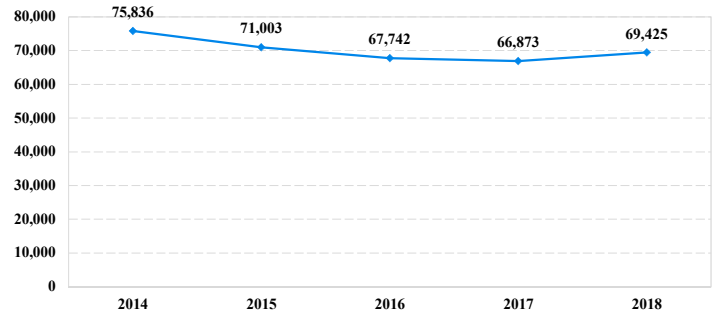
FINE ONLY

	TOTAL	Immigration	Drug Trafficking	Firearms	Fraud/Theft /Embezzle	Robbery	Child Porn	Money Laundering	All Other
Total	522	1	4	3	89	0	0	1	424

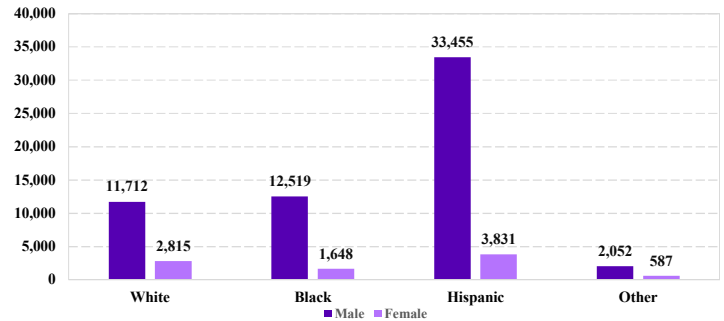
Cases with indeterminable sentence terms are excluded from the calculation of the Mean Sentence or Median Sentence category. Sentences greater than 470 months and probation were included in the sentence average computations as 470 months and zero months, respectively. Cases in the Total Receiving Prison, Total Receiving Probation, and Fine Only categories total 100 percent of all cases. Cases missing information required for a specific analysis were excluded from that analysis. Descriptions of variables used in this analysis are provided in Appendix A.

SOURCE: U.S. Sentencing Commission, 2018 Datafile, USSCFY18.

Number of Federal Offenders Over Time



Race and Gender



Citizenship, Guilty Pleas, and Trials

