

Figure S

ACCEPTANCE OF RESPONSIBILITY BY DRUG TYPE AND YEAR FOR DRUG DEFENDANTS<sup>1</sup>

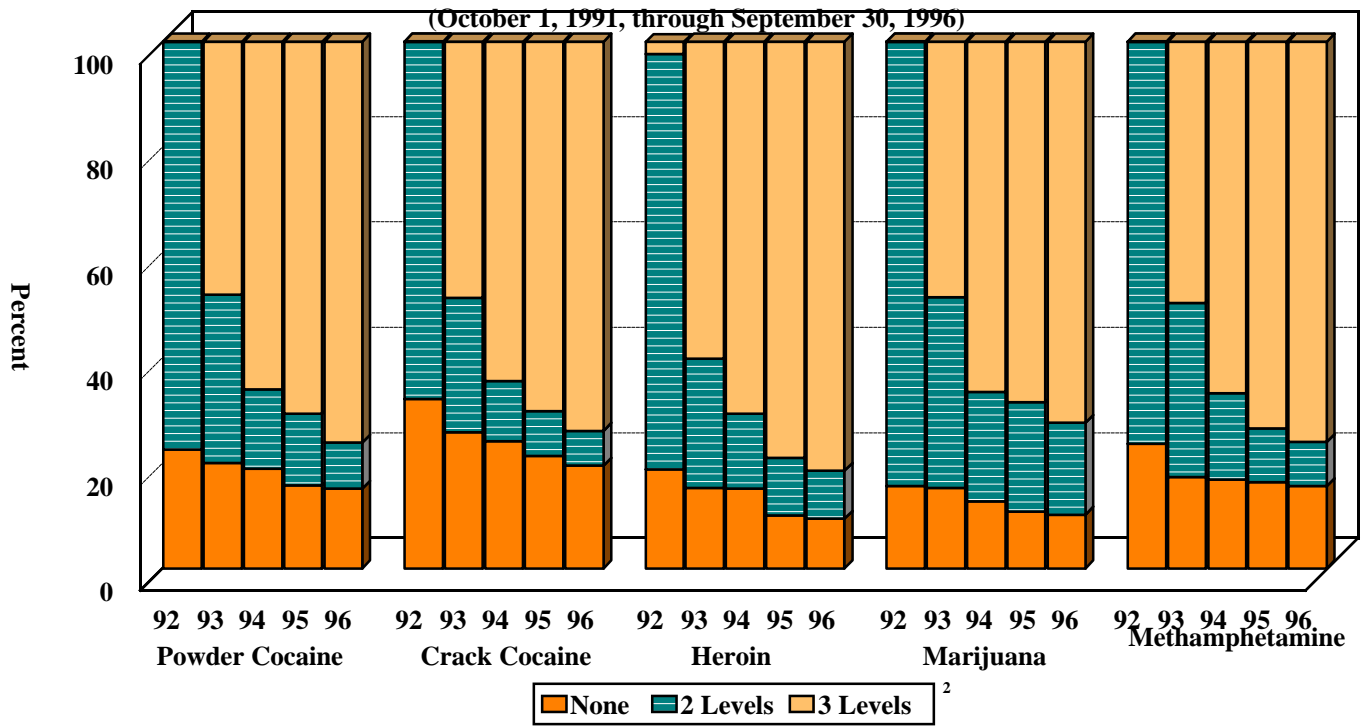
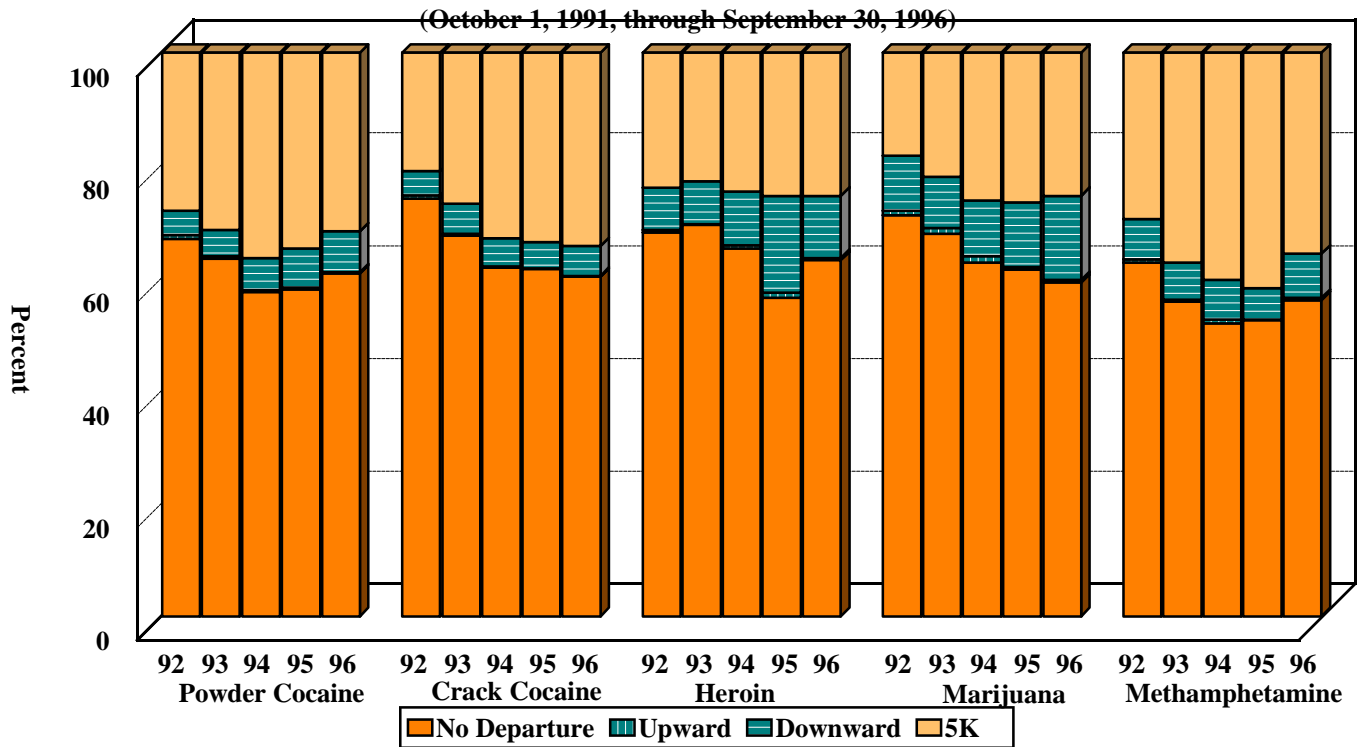


Figure T

DEPARTURE STATUS BY DRUG TYPE AND YEAR FOR DRUG DEFENDANTS<sup>1</sup>



<sup>1</sup> Only cases sentenced under §§2D1.1 (Drug Trafficking), 2D1.2 (Protected Locations), 2D1.5 (Continuing Criminal Enterprise), 2D1.8 (Rent/Manage Drug Establishment), or 2D2.1 (Simple Possession) are depicted in these figures. Only cases with complete guideline application information were included in the first figure. Additional cases were excluded due to missing information on type of drug, acceptance of responsibility, or departure status.

<sup>2</sup> The three-level decrease was added to the Acceptance of Responsibility Guideline (§3E1.1) in fiscal year 1993.

SOURCE: U.S. Sentencing Commission, 1992-1996 Datafiles, MONFY92-MONFY96.