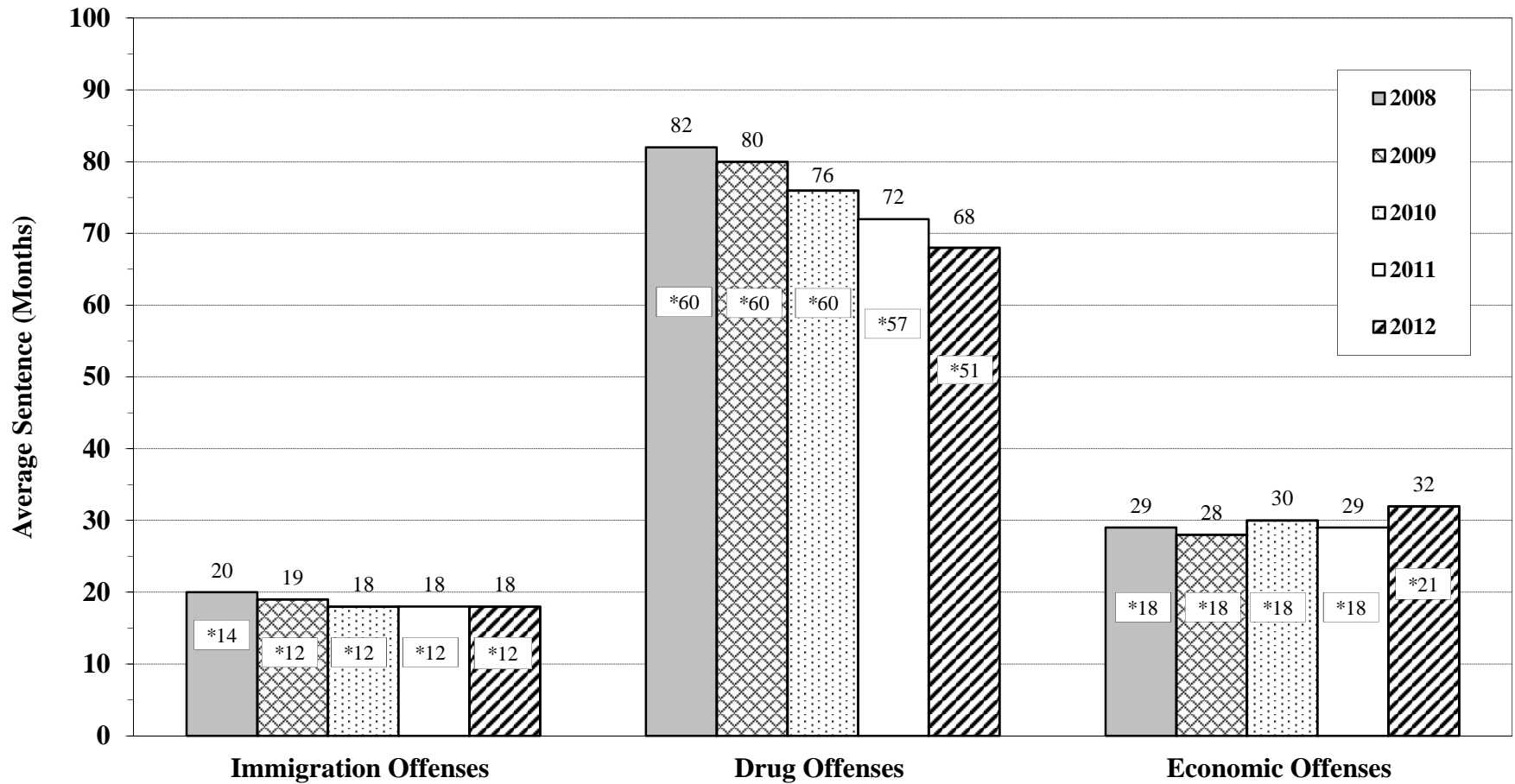


**Figure E**

**LENGTH OF IMPRISONMENT IN EACH GENERAL CRIME CATEGORY<sup>1</sup>  
Fiscal Years 2008 - 2012**



<sup>1</sup> Drug offenses include drug trafficking, use of a communication facility, and simple possession. Economic offenses include fraud, embezzlement, forgery/counterfeiting, bribery, tax offenses, and money laundering. This figure does not include sentences of probation and any confinement as described in USSG §5C1.1. Descriptions of variables used in this figure are provided in Appendix A.

\* Median values are superimposed on the bars and are preceded by asterisks.