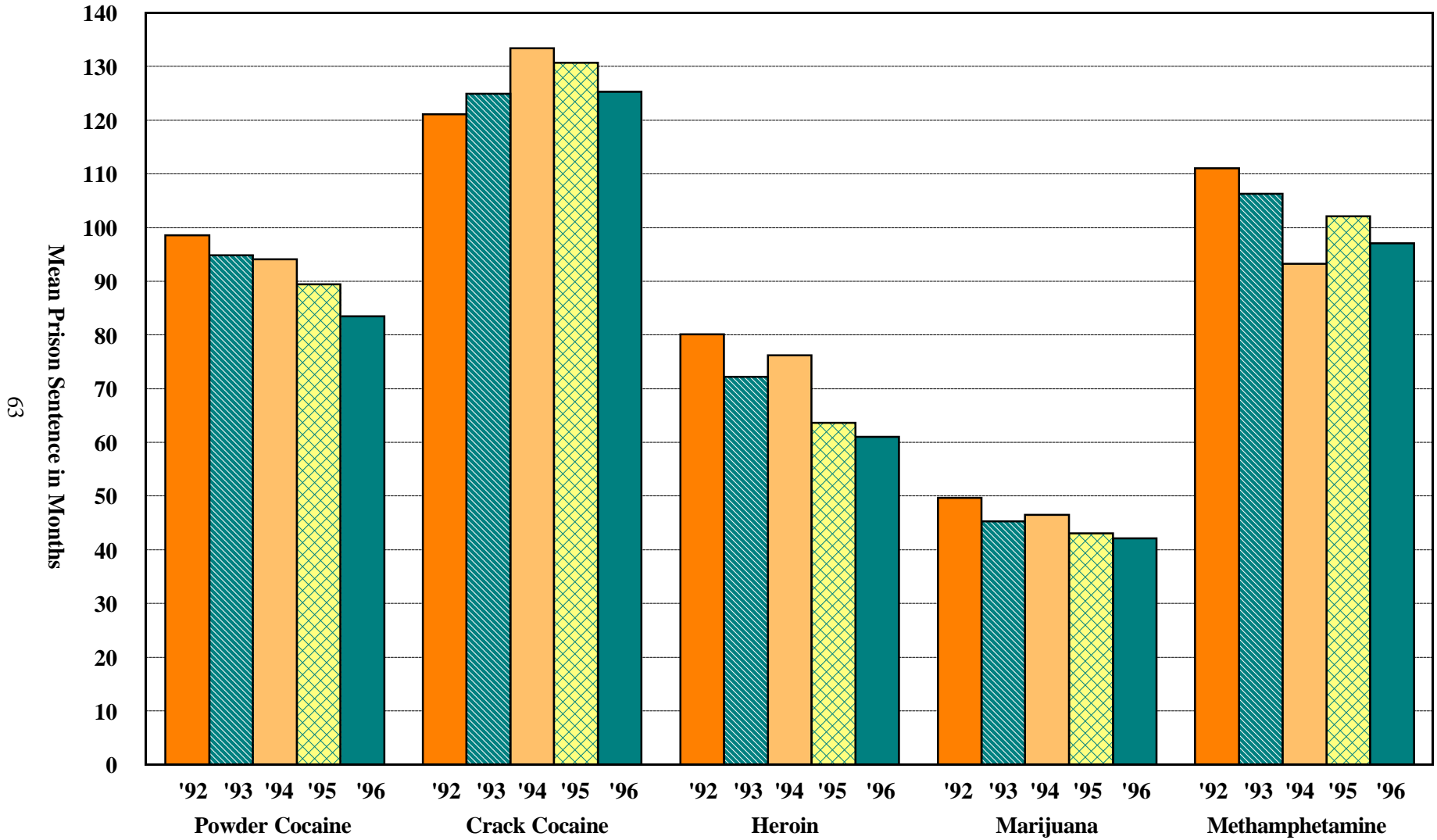


Figure U

**PRISON SENTENCE IMPOSED BY DRUG TYPE AND YEAR FOR DRUG DEFENDANTS<sup>1</sup>**  
 (October 1, 1991, through September 30, 1996)



63

<sup>1</sup> Only cases sentenced under §§2D1.1 (Drug Trafficking), 2D1.2 (Protected Locations), 2D1.5 (Continuing Criminal Enterprise), 2D1.8 (Rent/Manage Drug Establishment), or 2D2.1 (Simple Possession) are depicted in this figure. Additionally, cases with zero months prison were excluded. Cases missing drug type or sentencing information were not included in this figure.